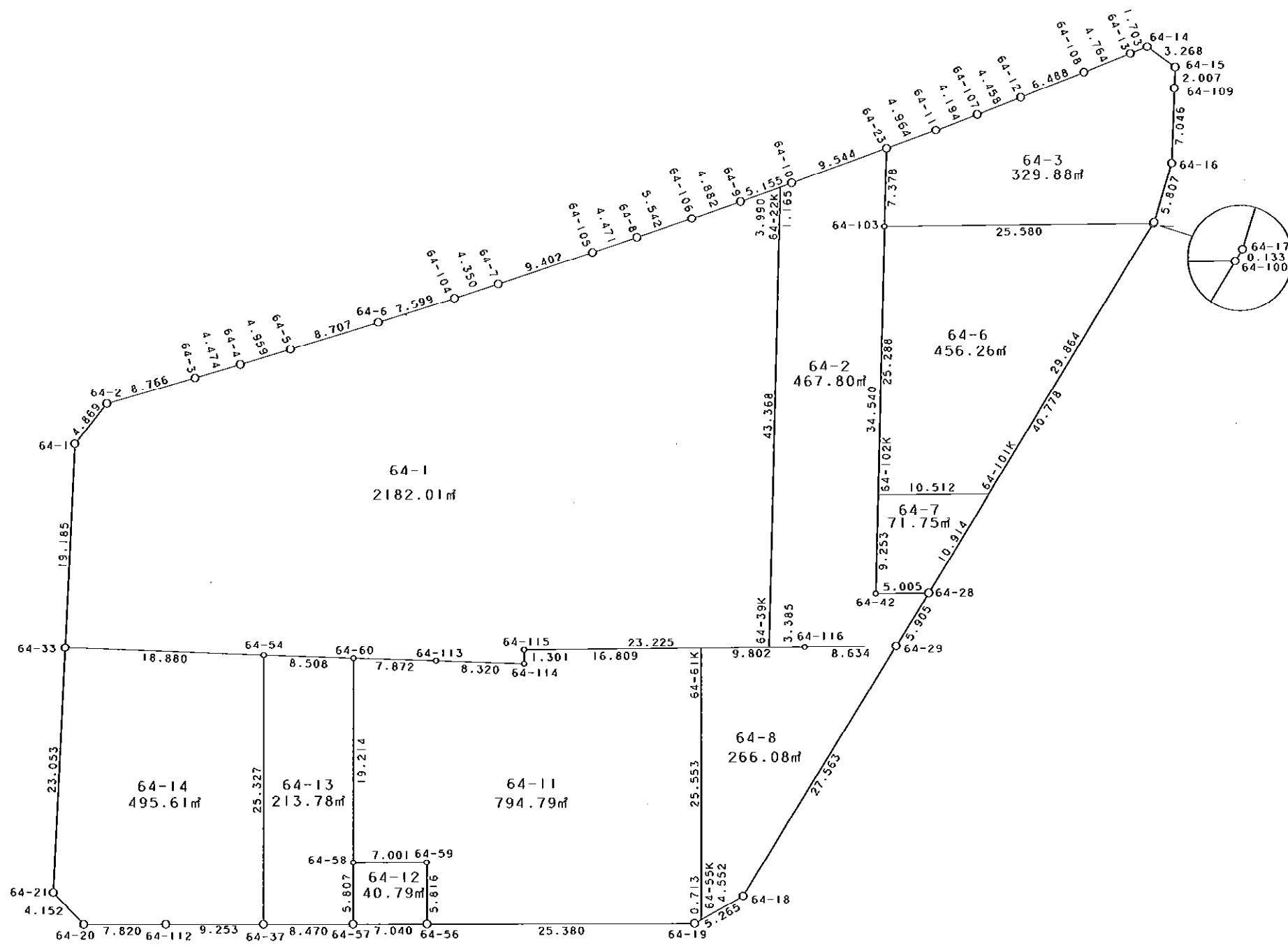


64街区



S = 1 / 500



凡 例

記号	名称
⊙	地区界点
○	街区点
○	画地点(折れ点)
┆	画地点(直線中)

面積 (座標法) 計算書

地番 = 64街区

測点名	[1] X (i)	[2] X (i+1)-X (i-1)	[3] Y (i)	[4] Y (i+1)-Y (i-1)	[2] * [3]	[1] * [4]	方向角	夾角	距離
64-2	-149776.651	-6.636	-40861.444	-11.222	271156.542384	1680793.577522	216-21-50	144-24-22	4.869
64-1	-149780.572	-23.105	-40864.331	-3.060	944170.367755	458328.550320	180-31-00	144-09-10	19.185
64-33	-149799.756	-42.236	-40864.504	-0.393	1725953.190944	58871.304108	180-32-48	180-01-48	23.053
64-21	-149822.808	-25.959	-40864.724	2.744	1060807.370316	-411113.785152	134-26-37	133-53-49	4.152
64-20	-149825.715	-2.609	-40861.760	10.778	106608.331840	-1614821.556270	87-48-58	133-22-21	7.820
64-112	-149825.417	0.628	-40853.946	17.061	-25656.278088	-2556171.439437	87-57-22	180-08-24	9.253
64-37	-149825.087	0.644	-40844.699	17.711	-26303.986156	-2653552.115857	87-52-31	179-55-09	8.470
64-57	-149824.773	0.568	-40836.235	15.499	-23194.981480	-2322134.156727	87-55-56	180-03-25	7.040
64-56	-149824.519	1.193	-40829.200	32.398	-48709.235600	-4854014.766562	87-52-47	179-56-51	25.380
64-19	-149823.580	3.678	-40803.837	29.859	-150076.512486	-4473582.275220	58-39-00	150-46-13	5.265
64-18	-149820.841	26.714	-40799.341	18.095	-1089913.595474	-2711008.117895	29-33-45	150-54-45	27.563
64-29	-149796.866	29.111	-40785.742	16.512	-1187313.735362	-2473445.851392	29-33-39	179-59-54	5.905
64-28	-149791.730	40.593	-40782.829	23.054	-1655497.377597	-3453298.543420	29-35-54	180-02-15	40.778
64-100	-149756.273	35.573	-40762.688	20.207	-1450051.100224	-3026125.008511	29-38-18	180-02-24	0.133
64-17	-149756.157	5.734	-40762.622	1.534	-233732.874548	-229725.944838	14-38-39	165-00-21	5.807
64-16	-149750.539	12.664	-40761.154	1.463	-516199.254256	-219085.038557	359-57-34	165-18-55	7.046
64-109	-149743.493	9.053	-40761.159	0.008	-369010.772427	-1197.947944	0-22-16	180-24-42	2.007
64-15	-149741.486	3.843	-40761.146	-2.691	-156645.084078	402954.338826	304-10-35	123-48-19	3.268
64-14	-149739.650	1.138	-40763.850	-4.257	-46389.261300	637441.690050	245-47-54	121-37-19	1.703
64-13	-149740.348	-2.612	-40765.403	-5.916	106479.232636	885863.898768	246-18-48	180-30-54	4.764
64-108	-149742.262	-4.472	-40769.766	-10.325	182322.393552	1546088.855150	246-46-42	180-27-54	6.488
64-12	-149744.820	-4.289	-40775.728	-10.070	174887.097392	1507930.337400	247-09-03	180-22-21	4.458
64-107	-149746.551	-3.342	-40779.836	-7.980	136286.211912	1194977.476980	247-24-34	180-15-31	4.194
64-11	-149748.162	-3.479	-40783.708	-8.471	141886.520132	1268516.680302	247-53-39	180-29-05	4.964
64-23	-149750.030	-5.432	-40788.307	-13.453	221562.083624	2014587.153590	248-04-25	180-10-46	9.544
64-10	-149753.594	-5.461	-40797.161	-13.647	222793.296221	2043687.297318	248-24-25	180-20-00	5.155
64-9	-149755.491	-3.661	-40801.954	-9.345	149375.953594	1399465.063395	248-49-03	180-24-38	4.882
64-106	-149757.255	-3.745	-40806.506	-9.728	152820.364970	1456838.576640	249-03-24	180-14-21	5.542
64-8	-149759.236	-3.555	-40811.682	-9.361	145085.529510	1401896.208196	249-23-18	180-19-54	4.471
64-105	-149760.810	-4.840	-40815.867	-13.002	197548.796280	1947190.051620	249-40-28	180-17-10	9.402
64-7	-149764.076	-4.749	-40824.684	-12.906	193876.424316	1932855.164856	250-03-55	180-23-27	4.350
64-104	-149765.559	-4.014	-40828.773	-11.254	163886.694822	1685461.600986	250-32-40	180-28-45	7.599
64-6	-149768.090	-5.375	-40835.938	-15.394	219493.166750	2305529.977460	250-56-04	180-23-24	8.707
64-5	-149770.934	-4.436	-40844.167	-12.925	181184.724812	1935789.321950	251-16-22	180-20-18	4.959
64-4	-149772.526	-3.002	-40848.863	-8.942	122628.286726	1339265.927492	251-37-47	180-21-25	4.474
64-3	-149773.936	-4.125	-40853.109	-12.581	168519.074625	1884305.888816	251-57-28	180-19-41	8.766
合計				倍面積 面積	10637.606037 5318.80	-10637.606037 5318.80			311.416

地番	筆種別	面積	坪数
64-1	筆界	2182.01	660.05
64-2	筆界	467.80	141.51
64-3	筆界	329.88	99.79
64-6	筆界	456.26	138.02
64-7	筆界	71.75	21.70
64-8	筆界	266.08	80.49
64-11	筆界	794.79	240.42
64-12	筆界	40.79	12.34
64-13	筆界	213.78	64.66
64-14	筆界	495.61	149.92
	合計	5318.75	1608.90

面積 (座標法) 計算書

地番 = 64-1

測点名	[1] X (i)	[2] X (i+1) - X (i-1)	[3] Y (i)	[4] Y (i+1) - Y (i-1)	[2] * [3]	[1] * [4]	方向角	夾角	距離
64-22K	-149754.023	41.897	-40798.244	-4.204	-1709324.028868	629565.912692	248-24-43	69-03-53	3.990
64-9	-149755.491	-3.232	-40801.954	-8.262	131871.915328	1237279.866642	248-49-03	180-24-20	4.882
64-106	-149757.255	-3.745	-40806.506	-9.728	152820.364970	1456838.576640	249-03-24	180-14-21	5.542
64-8	-149759.236	-3.555	-40811.682	-9.361	145085.529510	1401896.208196	249-23-18	180-19-54	4.471
64-105	-149760.810	-4.840	-40815.867	-13.002	197548.796280	1947190.051620	249-40-28	180-17-10	9.402
64-7	-149764.076	-4.749	-40824.684	-12.906	193876.424316	1932855.164856	250-03-55	180-23-27	4.350
64-104	-149765.559	-4.014	-40828.773	-11.254	163886.694822	1685461.600986	250-32-40	180-28-45	7.599
64-6	-149768.090	-5.375	-40835.938	-15.394	219493.166750	2305529.977460	250-56-04	180-23-24	8.707
64-5	-149770.934	-4.436	-40844.167	-12.925	181184.724812	1935789.321950	251-16-22	180-20-18	4.959
64-4	-149772.526	-3.002	-40848.863	-8.942	122628.286726	1339265.927492	251-37-47	180-21-25	4.474
64-3	-149773.936	-4.125	-40853.109	-12.581	168519.074625	1884305.888816	251-57-28	180-19-41	8.766
64-2	-149776.651	-6.636	-40861.444	-11.222	271156.542384	1680793.577522	216-21-50	144-24-22	4.869
64-1	-149780.572	-23.105	-40864.331	-3.060	944170.367755	458328.550320	180-31-00	144-09-10	19.185
64-33	-149799.756	-19.205	-40864.504	18.707	784802.799320	-2802304.035492	90-03-49	89-32-49	18.880
64-54	-149799.777	-0.011	-40845.624	27.388	449.301864	-4102716.292476	89-55-58	179-52-09	8.508
64-60	-149799.767	0.048	-40837.116	16.380	-1960.181568	-2453720.183460	89-43-24	179-47-26	7.872
64-113	-149799.729	0.047	-40829.244	16.192	-1918.974468	-2425557.211968	89-56-17	180-12-53	8.320
64-114	-149799.720	1.310	-40820.924	8.292	-53475.410440	-1242139.278240	358-46-01	88-49-44	1.301
64-115	-149798.419	2.332	-40820.952	23.174	-95194.460064	-3471428.561906	87-27-20	268-41-19	23.225
64-39K	-149797.388	44.396	-40797.750	22.708	-1811256.909000	-3401599.086704	359-20-50	91-53-30	43.368
合計				倍面積 面積	4364.025054 2182.01	-4364.025054 2182.01			202.670

面積 (座標法) 計算書

地番 = 64-2

測点名	[1] X (i)	[2] X (i+1) - X (i-1)	[3] Y (i)	[4] Y (i+1) - Y (i-1)	[2] * [3]	[1] * [4]	方向角	夾角	距離
64-39K	-149797.388	-43.215	-40797.750	3.876	1763074.766250	-580614.675888	87-27-38	88-06-48	3.385
64-116	-149797.238	0.522	-40794.368	12.008	-21294.660096	-1798765.233904	87-31-50	180-04-12	8.634
64-29	-149796.866	5.508	-40785.742	11.539	-224647.866936	-1728506.036774	29-33-39	122-01-49	5.905
64-28	-149791.730	4.920	-40782.829	-2.087	-200651.518680	312615.340510	267-31-35	57-57-56	5.005
64-42	-149791.946	34.322	-40787.829	-5.414	-1399919.866938	810973.595644	359-18-48	271-47-13	34.540
64-103	-149757.408	41.916	-40788.243	-0.478	-1709679.993588	71584.041024	359-30-11	180-11-23	7.378
64-23	-149750.030	3.814	-40788.307	-8.918	-155566.602898	1335470.767540	248-04-25	68-34-14	9.544
64-10	-149753.594	-3.993	-40797.161	-9.937	162903.063873	1488101.463578	248-23-25	180-19-00	1.165
64-22K	-149754.023	-43.794	-40798.244	-0.589	1786718.297736	88205.119547	179-20-50	110-57-25	43.368
合計				倍面積 面積	935.618723 467.80	-935.618723 467.80			118.924

面積 (座標法) 計算書

地番 = 64-3  
測点名

	[1] X (i)	[2] X (i+1)-X (i-1)	[3] Y (i)	[4] Y (i+1)-Y (i-1)	[2]*[3]	[1]*[4]	方向角	夾角	距離
64-23	-149750.030	-9.246	-40788.307	-4.535	377128.686522	679116.386050	179-30-11	111-36-32	7.378
64-103	-149757.408	-6.243	-40788.243	25.619	254641.001049	-3836635.035552	87-27-25	87-57-14	25.580
64-100	-149756.273	1.251	-40762.688	25.621	-50994.122688	-3836905.470533	29-38-18	122-10-53	0.133
64-17	-149756.157	5.734	-40762.622	1.534	-233732.874548	-229725.944838	14-38-39	165-00-21	5.807
64-16	-149750.539	12.664	-40761.154	1.463	-516199.254256	-219085.038557	359-57-34	165-18-55	7.046
64-109	-149743.493	9.053	-40761.159	0.008	-369010.772427	-1197.947944	0-22-16	180-24-42	2.007
64-15	-149741.486	3.843	-40761.146	-2.691	-156645.084078	402954.338826	304-10-35	123-48-19	3.268
64-14	-149739.650	1.138	-40763.850	-4.257	-46389.261300	637441.690050	245-47-54	121-37-19	1.703
64-13	-149740.348	-2.612	-40765.403	-5.916	106479.232636	885863.898768	246-18-48	180-30-54	4.764
64-108	-149742.262	-4.472	-40769.766	-10.325	182322.393552	1546088.855150	246-46-42	180-27-54	6.488
64-12	-149744.820	-4.289	-40775.728	-10.070	174887.097392	1507930.337400	247-09-03	180-22-21	4.458
64-107	-149746.551	-3.342	-40779.836	-7.980	136286.211912	1194977.476980	247-24-34	180-15-31	4.194
64-11	-149748.162	-3.479	-40783.708	-8.471	141886.520132	1268516.680302	247-53-39	180-29-05	4.964
合計				倍面積 面積	659.773898 329.88	-659.773898 329.88			77.790

面積 (座標法) 計算書

地番 = 64-6  
測点名

	[1] X (i)	[2] X (i+1)-X (i-1)	[3] Y (i)	[4] Y (i+1)-Y (i-1)	[2]*[3]	[1]*[4]	方向角	夾角	距離
64-101K	-149782.240	26.421	-40777.438	25.252	-1077380.689398	-3782301.124480	29-35-52	122-04-23	29.864
64-100	-149756.273	24.832	-40762.688	-10.805	-1012219.068416	1618116.529765	267-27-25	57-51-33	25.580
64-103	-149757.408	-26.421	-40788.243	-25.252	1077666.168303	3781674.066816	179-18-48	91-51-23	25.288
64-102K	-149782.694	-24.832	-40787.940	10.805	1012846.126080	-1618402.008670	87-31-29	88-12-41	10.512
合計				倍面積 面積	912.536569 456.26	-912.536569 456.26			91.244

面積 (座標法) 計算書

地番 = 64-7  
測点名

	[1] X (i)	[2] X (i+1)-X (i-1)	[3] Y (i)	[4] Y (i+1)-Y (i-1)	[2]*[3]	[1]*[4]	方向角	夾角	距離
64-102K	-149782.694	-9.706	-40787.940	-10.391	395887.745640	1556391.973354	179-18-45	91-47-16	9.253
64-42	-149791.946	-9.036	-40787.829	5.111	368558.822844	-765586.636006	87-31-35	88-12-50	5.005
64-28	-149791.730	9.706	-40782.829	10.391	-395838.138274	-1556485.866430	29-35-59	122-04-24	10.914
64-101K	-149782.240	9.036	-40777.438	-5.111	-368464.929768	765537.028640	267-31-29	57-55-30	10.512
合計				倍面積 面積	143.500442 71.75	-143.500442 71.75			35.684

面積 (座標法) 計算書

地番 = 64-8  
測点名

	[1] X (i)	[2] X (i+1)-X (i-1)	[3] Y (i)	[4] Y (i+1)-Y (i-1)	[2] * [3]	[1] * [4]	方向角	夾 角	距 離
64-55K	-149823.209	-23.168	-40803.228	4.819	945329.186304	-721998.044171	58-38-59	60-44-24	4.552
64-18	-149820.841	26.343	-40799.341	17.486	-1074777.039963	-2619767.225726	29-33-45	150-54-46	27.563
64-29	-149796.866	23.603	-40785.742	4.973	-962665.868426	-744939.814618	267-31-50	57-58-05	8.634
64-116	-149797.238	-0.807	-40794.368	-18.418	32921.054976	2758965.529484	267-27-23	179-55-33	9.802
64-61K	-149797.673	-25.971	-40804.160	-8.860	1059724.839360	1327207.382780	177-54-35	90-27-12	25.553
合計				倍面積 面積	532.172251 266.08	-532.172251 266.08			76.104

面積 (座標法) 計算書

地番 = 64-11  
測点名

	[1] X (i)	[2] X (i+1)-X (i-1)	[3] Y (i)	[4] Y (i+1)-Y (i-1)	[2] * [3]	[1] * [4]	方向角	夾 角	距 離
64-61K	-149797.673	24.790	-40804.160	-17.724	-1011535.126400	2655013.956252	267-27-23	89-32-48	16.809
64-115	-149798.419	-2.047	-40820.952	-16.764	83560.488744	2511220.696116	178-46-01	91-18-38	1.301
64-114	-149799.720	-1.310	-40820.924	-8.292	53475.410440	1242139.278240	269-56-17	271-10-16	8.320
64-113	-149799.729	-0.047	-40829.244	-16.192	1918.974468	2425557.211968	269-43-24	179-47-07	7.872
64-60	-149799.767	-19.240	-40837.116	-7.184	785706.111840	1076161.526128	177-56-53	88-13-29	19.214
64-58	-149818.969	-18.941	-40836.428	7.684	773482.782748	-1151208.957796	87-51-48	89-54-55	7.001
64-59	-149818.708	-5.550	-40829.432	7.228	226603.347600	-1082889.621424	177-42-49	269-51-01	5.816
64-56	-149824.519	-4.872	-40829.200	25.595	198919.862400	-3834758.563805	87-52-47	90-09-58	25.380
64-19	-149823.580	1.310	-40803.837	25.972	-53453.026470	-3891218.019760	58-39-02	150-46-15	0.713
64-55K	-149823.209	25.907	-40803.228	-0.323	-1057089.227796	48392.896507	357-54-35	119-15-33	25.553
合計				倍面積 面積	1589.597574 794.79	-1589.597574 794.79			117.979

面積 (座標法) 計算書

地番 = 64-12  
測点名

	[1] X (i)	[2] X (i+1)-X (i-1)	[3] Y (i)	[4] Y (i+1)-Y (i-1)	[2] * [3]	[1] * [4]	方向角	夾 角	距 離
64-58	-149818.969	-6.065	-40836.428	-6.803	247672.935820	1019218.446107	178-05-44	90-13-56	5.807
64-57	-149824.773	-5.550	-40836.235	7.228	226641.104250	-1082933.459244	87-55-56	89-50-12	7.040
64-56	-149824.519	6.065	-40829.200	6.803	-247629.098000	-1019256.202757	357-42-49	89-46-53	5.816
64-59	-149818.708	5.550	-40829.432	-7.228	-226603.347600	1082889.621424	267-51-48	90-08-59	7.001
合計				倍面積 面積	81.594470 40.79	-81.594470 40.79			25.664

面積 (座標法) 計算書

地番 = 64-13  
測点名

	[1] X (i)	[2] X (i+1)-X (i-1)	[3] Y (i)	[4] Y (i+1)-Y (i-1)	[2] * [3]	[1] * [4]	方向角	夾 角	距 離
64-54	-149799.777	-25.320	-40845.624	-7.583	1034211.199680	1135931.708991	177-54-25	87-58-27	25.327
64-37	-149825.087	-24.996	-40844.699	9.389	1020954.096204	-1406707.741843	87-52-31	89-58-06	8.470
64-57	-149824.773	6.118	-40836.235	8.271	-249836.085730	-1239200.697483	358-05-44	90-13-13	5.807
64-58	-149818.969	25.006	-40836.428	-0.881	-1021155.718568	131990.511689	357-56-53	179-51-09	19.214
64-60	-149799.767	19.192	-40837.116	-9.196	-783745.930272	1377558.657332	269-55-58	91-59-05	8.508
合計					427.561314	-427.561314			67.326
				倍面積 面積	213.78	213.78			

面積 (座標法) 計算書

地番 = 64-14  
測点名

	[1] X (i)	[2] X (i+1)-X (i-1)	[3] Y (i)	[4] Y (i+1)-Y (i-1)	[2] * [3]	[1] * [4]	方向角	夾 角	距 離
64-33	-149799.756	-23.031	-40864.504	-19.100	941150.391624	2861175.339600	180-32-48	90-28-59	23.053
64-21	-149822.808	-25.959	-40864.724	2.744	1060807.370316	-411113.785152	134-26-37	133-53-49	4.152
64-20	-149825.715	-2.609	-40861.760	10.778	106608.331840	-1614821.556270	87-48-58	133-22-21	7.820
64-112	-149825.417	0.628	-40853.946	17.061	-25656.278088	-2556171.439437	87-57-22	180-08-24	9.253
64-37	-149825.087	25.640	-40844.699	8.322	-1047258.082360	-1246844.374014	357-54-25	89-57-03	25.327
64-54	-149799.777	25.331	-40845.624	-19.805	-1034660.501544	2966784.583485	270-03-49	92-09-24	18.880
合計					991.231788	-991.231788			88.485
				倍面積 面積	495.61	495.61			