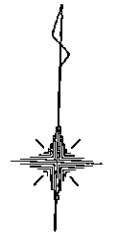
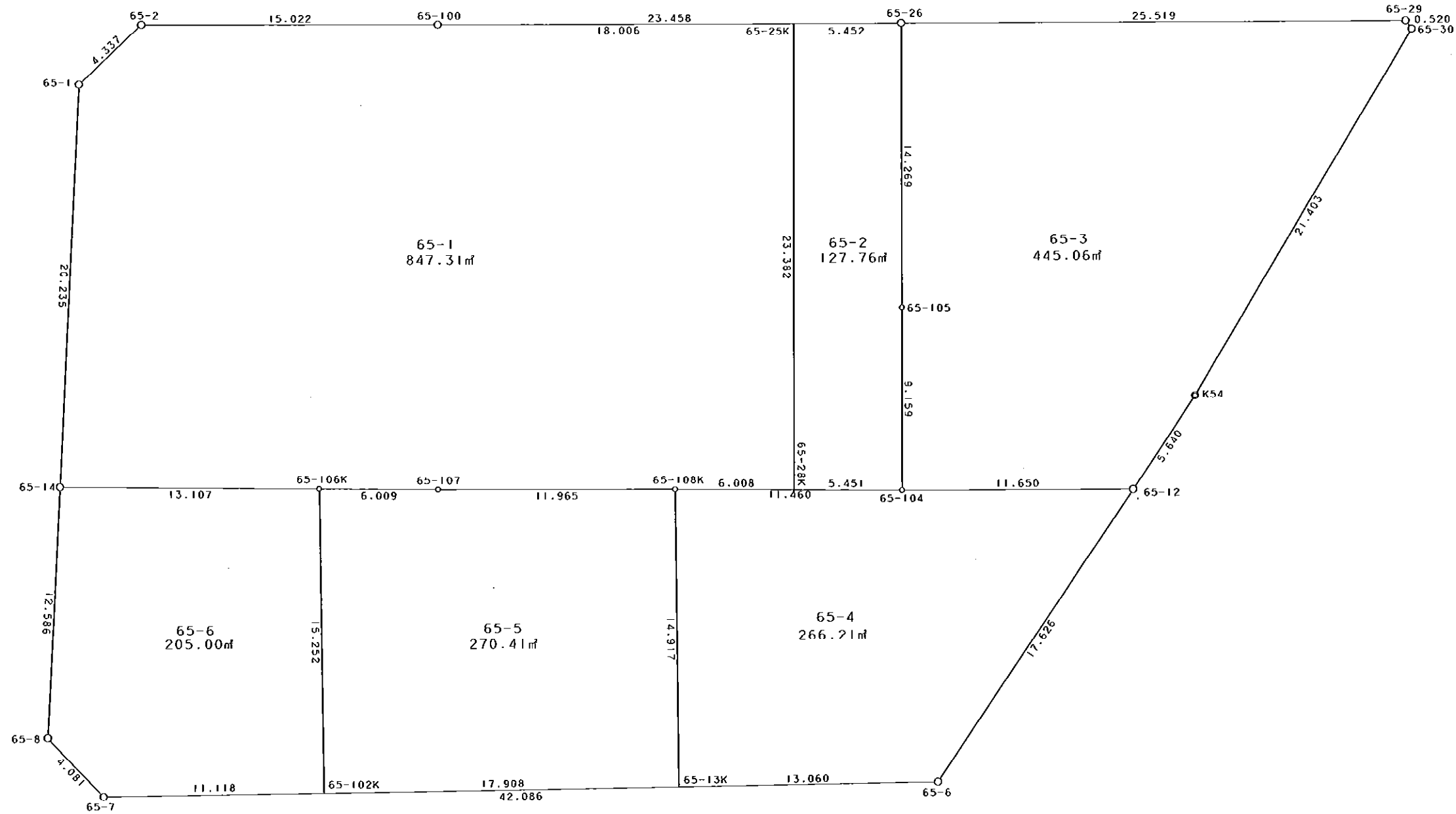


西部第4地区上地区画整理事業 出来形確認測量 (原了図)

65街区



S = 1 / 250



凡 例

記号	名称
⊙	地区界点
○	街区点
○	画地点 (折れ点)
┆	画地点 (直線中)

### 面積 (座標法) 計算書

地番 = 65街区

測点名	[1] X (i)	[2] X (i+1)-X (i-1)	[3] Y (i)	[4] Y (i+1)-Y (i-1)	[2] * [3]	[1] * [4]	方向角	夾 角	距 離
65-2	-149831.700	-3.635	-40861.796	-18.047	148532.628460	2704012.689900	224-24-41	136-27-36	4.337
65-1	-149834.798	-23.332	-40864.831	-3.209	953458.236892	480819.866782	180-29-34	136-04-53	20.235
65-14	-149855.032	-32.819	-40865.005	-0.307	1341148.599095	46005.494824	180-36-20	180-06-46	12.586
65-8	-149867.617	-15.418	-40865.138	2.804	630058.697684	-420228.798068	133-58-03	133-21-43	4.081
65-7	-149870.450	-0.641	-40862.201	44.966	26192.670841	-6739074.654700	87-00-52	133-02-49	42.086
65-6	-149868.258	17.146	-40820.172	51.359	-699902.669112	-7697083.862622	31-57-38	124-56-46	17.626
65-12	-149853.304	19.742	-40810.842	12.310	-805687.642764	-1844694.172240	31-53-52	179-56-14	5.640
K54	-149848.516	23.525	-40807.862	13.325	-960004.953550	-1996731.475700	28-54-14	177-00-22	21.403
65-30	-149829.779	19.144	-40797.517	10.022	-781027.665448	-1501594.045138	321-33-51	112-39-37	0.520
65-29	-149829.372	-0.524	-40797.840	-25.825	21378.068160	3869343.531900	267-54-33	126-20-42	25.519
65-26	-149830.303	-1.791	-40823.342	-48.944	73114.605522	7333294.350032	267-53-56	179-59-23	23.458
65-100	-149831.163	-1.397	-40846.784	-38.454	57062.957248	5761607.542002	267-57-05	180-03-09	15.022
合計				倍面積 面積	4323.533028 2161.76	-4323.533028 2161.76			192.513

地番	筆種別	面積	坪数
65-1	筆界	847.31	256.31
65-2	筆界	127.76	38.64
65-3	筆界	445.06	134.63
65-4	筆界	266.21	80.52
65-5	筆界	270.41	81.80
65-6	筆界	205.00	62.01
	筆合計	2161.75	653.91

面積 (座標法) 計算書

地番 = 65-1

測点名	[1] X (i)	[2] X (i+1)-X (i-1)	[3] Y (i)	[4] Y (i+1)-Y (i-1)	[2] * [3]	[1] * [4]	方向角	夾角	距離
65-25K	-149830.503	22.706	-40828.790	-18.850	-927058.505740	2824304.981550	267-53-58	89-59-51	18.006
65-100	-149831.163	-1.197	-40846.784	-33.006	48893.600448	4945327.365978	267-57-05	180-03-07	15.022
65-2	-149831.700	-3.635	-40861.796	-18.047	148532.628460	2704012.689900	224-24-41	136-27-36	4.337
65-1	-149834.798	-23.332	-40864.831	-3.209	953458.236892	480819.866782	180-29-34	136-04-53	20.235
65-14	-149855.032	-19.842	-40865.005	12.927	810843.429210	-1937175.998664	88-17-10	87-47-36	13.107
65-106K	-149854.640	0.571	-40851.904	19.107	-23326.437184	-2863272.606480	88-17-34	180-00-24	6.009
65-107	-149854.461	0.601	-40845.898	17.964	-24548.384698	-2691985.537404	87-58-44	179-41-10	11.965
65-108K	-149854.039	0.592	-40833.940	17.964	-24173.692480	-2691977.956596	88-22-43	180-23-59	6.008
65-28K	-149853.869	23.536	-40827.934	5.150	-960926.254624	-771747.425350	357-54-07	89-31-24	23.382
合計				倍面積 面積	1694.620284 847.31	-1694.620284 847.31			118.071

面積 (座標法) 計算書

地番 = 65-2

測点名	[1] X (i)	[2] X (i+1)-X (i-1)	[3] Y (i)	[4] Y (i+1)-Y (i-1)	[2] * [3]	[1] * [4]	方向角	夾角	距離
65-28K	-149853.869	-23.212	-40827.934	6.305	947698.004008	-944828.644045	88-22-52	90-28-45	5.451
65-104	-149853.715	9.307	-40822.485	5.129	-379934.867895	-768599.704235	357-59-52	89-37-00	9.159
65-105	-149844.562	23.412	-40822.805	-0.857	-955743.510660	128416.789634	357-50-36	179-50-44	14.269
65-26	-149830.303	14.059	-40823.342	-5.985	-573935.365178	896734.363455	267-53-51	90-03-15	5.452
65-25K	-149830.503	-23.566	-40828.790	-4.592	962171.265140	688021.669776	177-54-07	90-00-16	23.382
合計				倍面積 面積	255.525415 127.76	-255.525415 127.76			57.713

面積 (座標法) 計算書

地番 = 65-3

測点名	[1] X (i)	[2] X (i+1)-X (i-1)	[3] Y (i)	[4] Y (i+1)-Y (i-1)	[2] * [3]	[1] * [4]	方向角	夾角	距離
65-26	-149830.303	-15.190	-40823.342	-24.965	620106.564980	3740513.514395	177-50-36	89-56-03	14.269
65-105	-149844.562	-23.412	-40822.805	0.857	955743.510660	-128416.789634	177-59-52	180-09-16	9.159
65-104	-149853.715	-8.742	-40822.485	11.963	356870.163870	-1792699.992545	87-58-42	89-58-50	11.650
65-12	-149853.304	5.199	-40810.842	14.623	-212175.567558	-2191304.864392	31-53-52	123-55-10	5.640
K54	-149848.516	23.525	-40807.862	13.325	-960004.953550	-1996731.475700	28-54-14	177-00-22	21.403
65-30	-149829.779	19.144	-40797.517	10.022	-781027.665448	-1501594.045138	321-33-51	112-39-37	0.520
65-29	-149829.372	-0.524	-40797.840	-25.825	21378.068160	3869343.531900	267-54-33	126-20-42	25.519
合計				倍面積 面積	890.121114 445.06	-890.121114 445.06			88.160

面積 (座標法) 計算書

地番 = 65-4  
測点名

	[1] X (i)	[2] X (i+1)-X (i-1)	[3] Y (i)	[4] Y (i+1)-Y (i-1)	[2] * [3]	[1] * [4]	方向角	夾角	距離
65-13K	-149868.938	-14.219	-40833.214	13.768	580607.469866	-2063395.538384	87-00-55	89-48-18	13.060
65-6	-149868.258	15.634	-40820.172	22.372	-638182.569048	-3352852.667976	31-57-38	124-56-43	17.626
65-12	-149853.304	14.543	-40810.842	-2.313	-593512.075206	346610.692152	267-58-42	56-01-04	11.650
65-104	-149853.715	-0.735	-40822.485	-23.098	30004.526475	3461321.109070	268-22-47	180-24-05	11.460
65-108K	-149854.039	-15.223	-40833.940	-10.729	621615.068620	1607783.984431	177-12-37	88-49-50	14.917
合計				倍面積 面積	532.420707 266.21	-532.420707 266.21			68.713

面積 (座標法) 計算書

地番 = 65-5  
測点名

	[1] X (i)	[2] X (i+1)-X (i-1)	[3] Y (i)	[4] Y (i+1)-Y (i-1)	[2] * [3]	[1] * [4]	方向角	夾角	距離
65-13K	-149868.938	15.832	-40833.214	17.158	-646471.444048	-2571451.238204	357-12-37	90-11-48	14.917
65-108K	-149854.039	14.477	-40833.940	-12.684	-591152.949380	1900748.630676	267-58-44	90-46-07	11.965
65-107	-149854.461	-0.601	-40845.898	-17.964	24548.384698	2691985.537404	268-17-34	180-18-50	6.009
65-106K	-149854.640	-15.410	-40851.904	-5.200	629527.840640	779244.128000	176-58-15	88-40-41	15.252
65-102K	-149869.871	-14.298	-40851.098	18.690	584088.999204	-2801067.888990	87-00-49	90-02-34	17.908
合計				倍面積 面積	540.831114 270.41	-540.831114 270.41			66.051

面積 (座標法) 計算書

地番 = 65-6  
測点名

	[1] X (i)	[2] X (i+1)-X (i-1)	[3] Y (i)	[4] Y (i+1)-Y (i-1)	[2] * [3]	[1] * [4]	方向角	夾角	距離
65-102K	-149869.871	15.810	-40851.098	10.297	-645855.859380	-1543210.061687	356-58-15	89-57-22	15.252
65-106K	-149854.640	14.839	-40851.904	-13.907	-606201.403456	2084028.478480	268-17-10	91-18-55	13.107
65-14	-149855.032	-12.977	-40865.005	-13.234	530305.169885	1983181.493488	180-36-20	92-19-10	12.586
65-8	-149867.617	-15.418	-40865.138	2.804	630058.697684	-420228.798068	133-58-03	133-21-43	4.081
65-7	-149870.450	-2.254	-40862.201	14.040	92103.401054	-2104181.118000	87-00-53	133-02-50	11.118
合計				倍面積 面積	410.005787 205.00	-410.005787 205.00			56.144