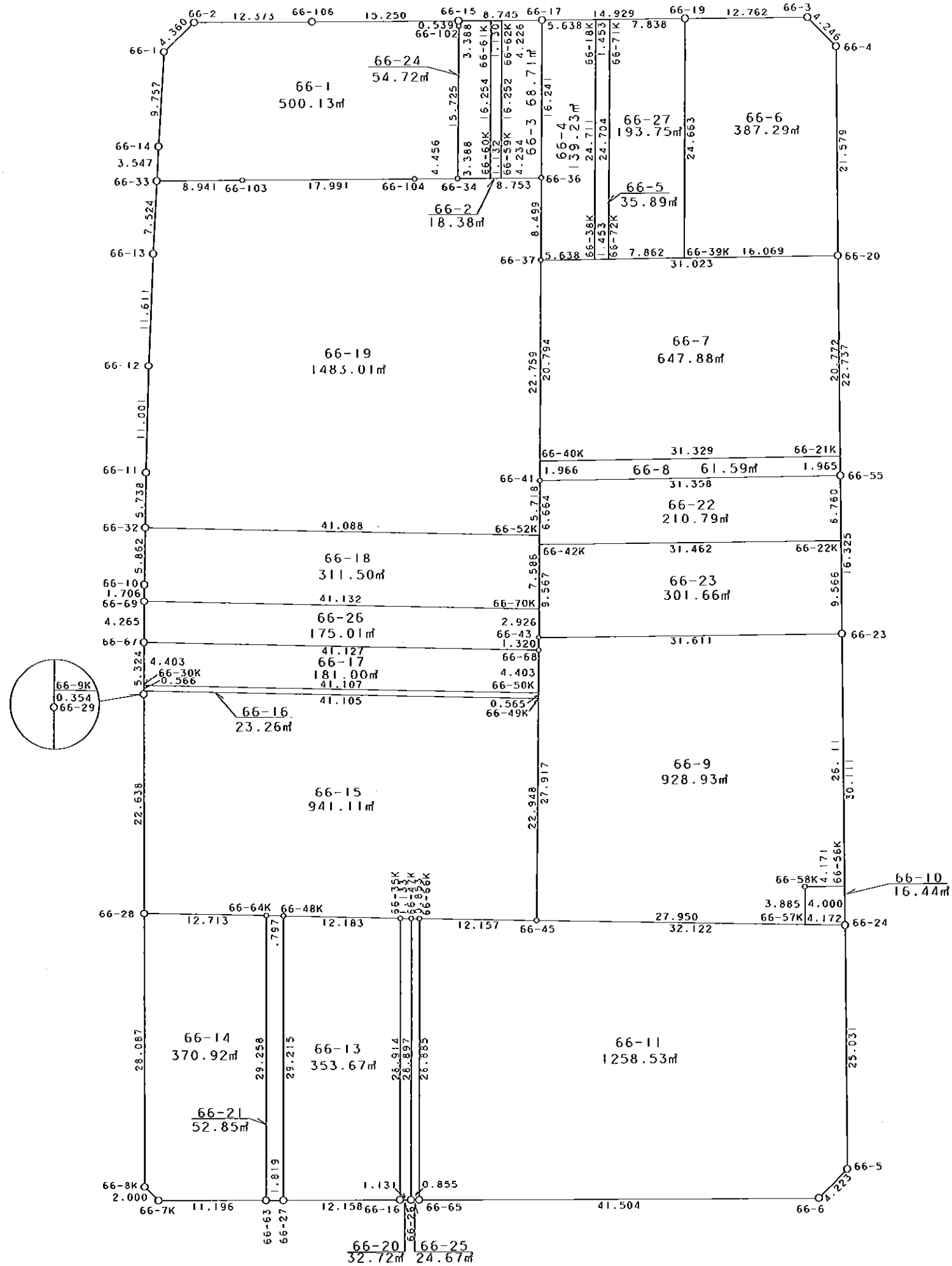


66街区



S = 1 / 500



凡 例

記号	名称
⊙	地区界点
○	街区点
○	画地点(折れ点)
	画地点(直線中)

### 面積 (座標法) 計算書

地番 = 66街区

測点名	[1] X (i)	[2] X (i+1)-X (i-1)	[3] Y (i)	[4] Y (i+1)-Y (i-1)	[2] * [3]	[1] * [4]	方向角	夾 角	距 離
66-2	-149880.280	-3.780	-40937.969	-15.345	154745.522820	2299912.896600	223-14-36	136-02-29	4.360
66-1	-149883.456	-12.932	-40940.956	-3.100	529448.442992	464638.713600	180-39-49	137-25-13	9.757
66-14	-149893.212	-13.303	-40941.069	-0.132	544639.040907	19785.903984	180-18-25	179-38-36	3.547
66-33	-149896.759	-11.071	-40941.088	-0.042	453258.785248	6295.663878	180-10-31	179-52-06	7.524
66-13	-149904.283	-19.135	-40941.111	0.061	783408.158985	-9144.161263	179-35-08	179-24-37	11.611
66-12	-149915.894	-22.610	-40941.027	0.310	925676.620470	-46473.927140	178-49-22	179-14-14	11.001
66-11	-149926.893	-16.734	-40940.801	0.401	685103.363934	-60120.684093	178-15-08	179-25-46	5.738
66-32	-149932.628	-11.594	-40940.626	0.353	474665.617844	-52926.217684	178-15-35	180-00-27	5.862
66-10	-149938.487	-7.564	-40940.448	0.241	309673.548672	-36135.175367	177-53-02	179-37-27	1.706
66-69	-149940.192	-5.967	-40940.385	0.233	244291.277295	-34936.064736	177-42-57	179-49-55	4.265
66-67	-149944.454	-9.581	-40940.215	0.389	392248.199915	-58328.392606	177-38-32	179-55-35	5.324
66-29	-149949.773	-27.931	-40939.996	1.310	1143495.028276	-196434.202630	177-14-16	179-35-44	22.638
66-28	-149972.385	-50.667	-40938.905	2.441	2074251.499635	-366082.591785	177-14-42	180-00-26	28.087
66-8K	-150000.440	-29.402	-40937.555	2.829	1203645.992110	-424351.244760	132-19-33	135-04-51	2.000
66-7K	-150001.787	-0.839	-40936.076	12.663	34345.367764	-1899472.628781	87-23-57	135-04-24	11.196
66-63	-150001.279	0.591	-40924.892	13.001	-24186.611172	-1950166.628279	87-23-04	179-59-07	1.819
66-27	-150001.196	0.645	-40923.075	13.962	-26395.383375	-2094316.698552	87-21-02	179-57-58	12.158
66-16	-150000.634	0.612	-40910.930	13.275	-25037.489160	-1991258.416350	87-27-59	180-06-57	1.131
66-26	-150000.584	0.086	-40909.800	1.984	-3518.242800	-297601.158656	87-35-10	180-07-11	0.855
66-65	-150000.548	1.938	-40908.946	42.314	-79281.537348	-6347123.188072	87-22-24	179-47-14	41.504
66-6	-149998.646	5.027	-40867.486	44.300	-205440.852122	-6644940.017800	42-15-52	134-53-28	4.223
66-5	-149995.521	28.121	-40864.646	1.517	-1149154.710166	-227543.205357	356-58-13	134-42-21	25.031
66-24	-149970.525	55.063	-40865.969	-2.942	-2250202.851047	441213.284550	356-55-04	179-56-51	30.111
66-23	-149940.458	46.369	-40867.588	-2.489	-1894989.187972	373201.799962	356-56-43	180-01-39	16.325
66-55	-149924.156	39.005	-40868.458	-2.117	-1594074.204290	317389.438252	356-51-22	179-54-39	22.737
66-20	-149901.453	44.252	-40869.705	-2.387	-1808566.185660	357814.768311	356-58-18	180-06-56	21.579
66-4	-149879.904	24.400	-40870.845	-4.286	-997248.618000	642385.268544	312-11-02	135-12-44	4.246
66-3	-149877.053	2.194	-40873.991	-15.891	-89677.536254	2381696.249223	267-02-57	134-51-55	12.762
66-19	-149877.710	-1.417	-40886.736	-27.655	57936.504912	4144868.070050	267-04-55	180-01-58	14.929
66-17	-149878.470	-1.199	-40901.646	-23.644	49041.073554	3543726.544680	267-07-21	180-02-26	8.745
66-15	-149878.909	-1.206	-40910.380	-23.965	49337.918280	3591848.054185	267-07-02	179-59-41	15.250
66-106	-149879.676	-1.371	-40925.611	-27.589	56109.012681	4135030.381164	267-12-07	180-05-05	12.373
合計				倍面積 面積	17547.566928 8773.78	-17547.566928 8773.78			380.394

地番	筆種別	面積	坪数
66-1	筆界	500.13	151.28
66-2	筆界	18.38	5.56
66-3	筆界	68.71	20.78
66-4	筆界	139.23	42.11
66-5	筆界	35.89	10.85
66-6	筆界	387.29	117.15
66-7	筆界	647.88	195.98
66-8	筆界	61.59	18.63
66-9	筆界	928.93	281.00
66-10	筆界	16.44	4.97
66-11	筆界	1258.53	380.70
66-13	筆界	353.67	106.98
66-14	筆界	370.92	112.20
66-15	筆界	941.11	284.68
66-16	筆界	23.26	7.03
66-17	筆界	181.00	54.75
66-18	筆界	311.50	94.23
66-19	筆界	1483.01	448.61
66-20	筆界	32.72	9.89
66-21	筆界	52.85	15.98
66-22	筆界	210.79	63.76
66-23	筆界	301.66	91.25
66-24	筆界	54.72	16.55
66-25	筆界	24.67	7.46
66-26	筆界	175.01	52.94
66-27	筆界	193.75	58.60
	合計	8773.64	2653.92

面積 (座標法) 計算書

地番 = 66-1  
測点名

	[1] X (i)	[2] X (i+1)-X (i-1)	[3] Y (i)	[4] Y (i+1)-Y (i-1)	[2]*[3]	[1]*[4]	方向角	夾角	距離
66-2	-149880.280	-3.780	-40937.969	-15.345	154745.522820	2299912.896600	223-14-36	136-02-29	4.360
66-1	-149883.456	-12.932	-40940.956	-3.100	529448.442992	464638.713600	180-39-49	137-25-13	9.757
66-14	-149893.212	-13.303	-40941.069	-0.132	544639.040907	19785.903984	180-18-25	179-38-36	3.547
66-33	-149896.759	-3.082	-40941.088	8.910	126180.433216	-1335580.122690	87-01-08	86-42-43	8.941
66-103	-149896.294	1.383	-40932.159	26.897	-56609.175897	-4031760.619718	87-04-31	180-03-23	17.991
66-104	-149895.376	1.136	-40914.191	22.419	-46478.520976	-3360504.434544	87-11-46	180-07-15	4.456
66-34	-149895.158	15.932	-40909.740	3.875	-651773.977680	-580843.737250	357-54-03	90-42-17	15.725
66-102	-149879.444	16.249	-40910.316	-0.640	-664751.724684	95922.844160	353-10-42	175-16-39	0.539
66-15	-149878.909	-0.232	-40910.380	-15.295	9491.208160	2292397.913155	267-07-02	93-56-20	15.250
66-106	-149879.676	-1.371	-40925.611	-27.589	56109.012681	4135030.381164	267-12-07	180-05-05	12.373
合計				倍面積 面積	1000.261539 500.13	-1000.261539 500.13			92.939

面積 (座標法) 計算書

地番 = 66-2  
測点名

	[1] X (i)	[2] X (i+1)-X (i-1)	[3] Y (i)	[4] Y (i+1)-Y (i-1)	[2]*[3]	[1]*[4]	方向角	夾角	距離
66-62K	-149878.682	16.182	-40905.867	-1.769	-661938.739794	265135.388458	267-06-35	89-22-00	1.130
66-61K	-149878.739	-16.298	-40906.996	-0.490	666702.220808	73440.582110	177-44-49	90-38-14	16.254
66-60K	-149894.980	-16.182	-40906.357	1.769	661946.668974	-265164.219620	87-00-40	89-15-51	1.132
66-59K	-149894.921	16.298	-40905.227	0.490	-666673.389646	-73448.511290	357-44-35	90-43-55	16.252
合計				倍面積 面積	36.760342 18.38	-36.760342 18.38			34.768

面積 (座標法) 計算書

地番 = 66-3  
測点名

	[1] X (i)	[2] X (i+1)-X (i-1)	[3] Y (i)	[4] Y (i+1)-Y (i-1)	[2]*[3]	[1]*[4]	方向角	夾角	距離
66-59K	-149894.921	-16.016	-40905.227	4.868	655138.115632	-729688.475428	86-58-51	89-14-16	4.234
66-36	-149894.698	16.451	-40900.999	3.581	-672862.334549	-536772.913538	357-43-01	90-44-10	16.241
66-17	-149878.470	16.016	-40901.646	-4.868	-655080.762336	729608.391960	267-07-29	89-24-28	4.226
66-62K	-149878.682	-16.451	-40905.867	-3.581	672942.418017	536715.560242	177-44-35	90-37-06	16.252
合計				倍面積 面積	137.436764 68.71	-137.436764 68.71			40.953

面積 (座標法) 計算書

地番 = 66-4

測点名	[1] X (i)	[2] X (i+1)-X (i-1)	[3] Y (i)	[4] Y (i+1)-Y (i-1)	[2] * [3]	[1] * [4]	方向角	夾角	距離
66-18K	-149878.183	24.405	-40896.015	-6.596	-998067.246075	988596.495068	267-04-56	89-19-13	5.638
66-17	-149878.470	-16.515	-40901.646	-4.984	675490.683690	746994.294480	177-43-01	90-38-05	16.241
66-36	-149894.698	-24.721	-40900.999	0.967	1011113.596279	-144948.172966	177-50-32	180-07-31	8.499
66-37	-149903.191	-8.177	-40900.679	5.949	334444.852183	-891774.083259	86-47-13	88-56-41	5.638
66-38K	-149902.875	25.008	-40895.050	4.664	-1022703.410400	-699147.009000	357-45-43	90-58-30	24.711
合計				倍面積 面積	278.475677 139.23	-278.475677 139.23			60.727

面積 (座標法) 計算書

地番 = 66-5

測点名	[1] X (i)	[2] X (i+1)-X (i-1)	[3] Y (i)	[4] Y (i+1)-Y (i-1)	[2] * [3]	[1] * [4]	方向角	夾角	距離
66-71K	-149878.109	24.611	-40894.564	-2.416	-1006456.114604	362105.511344	267-04-50	89-19-09	1.453
66-18K	-149878.183	-24.766	-40896.015	-0.486	1012830.707490	72840.796938	177-45-43	90-40-53	24.711
66-38K	-149902.875	-24.611	-40895.050	2.416	1006468.075550	-362165.346000	86-48-18	89-02-35	1.453
66-72K	-149902.794	24.766	-40893.599	0.486	-1012770.872834	-72852.757884	357-45-41	90-57-23	24.704
合計				倍面積 面積	71.795602 35.89	-71.795602 35.89			52.321

面積 (座標法) 計算書

地番 = 66-6

測点名	[1] X (i)	[2] X (i+1)-X (i-1)	[3] Y (i)	[4] Y (i+1)-Y (i-1)	[2] * [3]	[1] * [4]	方向角	夾角	距離
66-19	-149877.710	-25.300	-40886.736	-11.758	1034434.420800	1762262.114180	177-42-23	90-39-26	24.663
66-39K	-149902.353	-23.743	-40885.749	17.031	970750.338507	-2552986.973943	86-47-22	89-04-59	16.069
66-20	-149901.453	22.449	-40869.705	14.904	-917484.007545	-2234131.255512	356-58-18	90-10-56	21.579
66-4	-149879.904	24.400	-40870.845	-4.286	-997248.618000	642385.268544	312-11-02	135-12-44	4.246
66-3	-149877.053	2.194	-40873.991	-15.891	-89677.536254	2381696.249223	267-02-57	134-51-55	12.762
合計				倍面積 面積	774.597508 387.29	-774.597508 387.29			79.319

面積 (座標法) 計算書

地番 = 66-7

測点名	[1] X (i)	[2] X (i+1)-X (i-1)	[3] Y (i)	[4] Y (i+1)-Y (i-1)	[2] * [3]	[1] * [4]	方向角	夾角	距離
66-21K	-149922.194	22.515	-40868.566	30.140	-920155.763490	-4518654.927160	356-51-24	90-06-10	20.772
66-20	-149901.453	19.003	-40869.705	-32.113	-776647.004115	4813785.360189	266-47-18	89-55-54	31.023
66-37	-149903.191	-22.515	-40900.679	-30.140	920878.787685	4518082.176740	177-42-05	90-54-47	20.794
66-40K	-149923.968	-19.003	-40899.845	32.113	777219.754535	-4814508.384384	86-45-14	89-03-09	31.329
合計				倍面積 面積	1295.774615 647.88	-1295.774615 647.88			103.918

面積 (座標法) 計算書

地番 = 66-8  
測点名

	[1] X (i)	[2] X (i+1)-X (i-1)	[3] Y (i)	[4] Y (i+1)-Y (i-1)	[2]*[3]	[1]*[4]	方向角	夾角	距離
66-40K	-149923.968	-3.738	-40899.845	-31.200	152883.620610	4677627.801600	177-41-48	90-56-34	1.966
66-41	-149925.932	-0.188	-40899.766	31.387	7689.156008	-4705725.227684	86-45-12	89-03-24	31.358
66-55	-149924.156	3.738	-40868.458	31.200	-152766.296004	-4677633.667200	356-50-57	90-05-45	1.965
66-21K	-149922.194	0.188	-40868.566	-31.387	-7683.290408	4705607.903078	266-45-14	89-54-17	31.329
合計				倍面積 面積	123.190206 61.59	-123.190206 61.59			66.618

面積 (座標法) 計算書

地番 = 66-9  
測点名

	[1] X (i)	[2] X (i+1)-X (i-1)	[3] Y (i)	[4] Y (i+1)-Y (i-1)	[2]*[3]	[1]*[4]	方向角	夾角	距離
66-43	-149942.151	-3.012	-40899.154	-31.512	123188.251848	4724977.062312	177-39-20	90-43-32	1.320
66-68	-149943.470	-29.217	-40899.100	1.074	1194949.004700	-161039.286780	177-54-22	180-15-02	27.917
66-45	-149971.368	-27.164	-40898.080	28.960	1110955.445120	-4343170.817280	88-29-43	90-35-21	27.950
66-57K	-149970.634	4.613	-40870.140	27.731	-188533.955820	-4158835.651454	356-54-57	88-25-14	3.885
66-58K	-149966.755	4.103	-40870.349	3.956	-167691.041947	-593268.482780	86-55-17	270-00-20	4.171
66-56K	-149966.531	26.297	-40866.184	2.761	-1074658.040648	-414057.592091	356-55-04	89-59-47	26.111
66-23	-149940.458	24.380	-40867.588	-32.970	-996351.795440	4943536.900260	266-55-48	90-00-44	31.611
合計				倍面積 面積	1857.867813 928.93	-1857.867813 928.93			122.965

面積 (座標法) 計算書

地番 = 66-10  
測点名

	[1] X (i)	[2] X (i+1)-X (i-1)	[3] Y (i)	[4] Y (i+1)-Y (i-1)	[2]*[3]	[1]*[4]	方向角	夾角	距離
66-57K	-149970.634	-3.770	-40870.140	4.380	154080.427800	-656871.376920	88-30-11	91-35-14	4.172
66-24	-149970.525	4.103	-40865.969	3.956	-167673.070807	-593283.396900	356-55-07	88-24-56	4.000
66-56K	-149966.531	3.770	-40866.184	-4.380	-154065.513680	656853.405780	266-55-17	90-00-10	4.171
66-58K	-149966.755	-4.103	-40870.349	-3.956	167691.041947	593268.482780	176-54-57	89-59-40	3.885
合計				倍面積 面積	32.885260 16.44	-32.885260 16.44			16.228

面積 (座標法) 計算書

地番 = 66-11  
測点名

	[1] X (i)	[2] X (i+1)-X (i-1)	[3] Y (i)	[4] Y (i+1)-Y (i-1)	[2]*[3]	[1]*[4]	方向角	夾角	距離
66-65	-150000.548	-26.954	-40908.946	42.747	1102659.730484	-6412073.425356	87-22-24	89-55-37	41.504
66-6	-149998.646	5.027	-40867.486	44.300	-205440.852122	-6644940.017800	42-15-52	134-53-28	4.223
66-5	-149995.521	28.121	-40864.646	1.517	-1149154.710166	-227543.205357	356-58-13	134-42-21	25.031
66-24	-149970.525	24.153	-40865.969	-33.434	-987035.749257	5014114.532850	268-29-46	91-31-33	32.122
66-45	-149971.368	-1.167	-40898.080	-44.264	47728.059360	6638332.633152	268-28-22	179-58-36	12.157
66-66K	-149971.692	-29.180	-40910.233	-10.866	1193760.598940	1629592.405272	177-26-47	88-58-25	28.885
合計				倍面積 面積	2517.077239 1258.53	-2517.077239 1258.53			143.922

面積 (座標法) 計算書

地番 = 66-13

測点名	[1] X (i)	[2] X (i+1)-X (i-1)	[3] Y (i)	[4] Y (i+1)-Y (i-1)	[2] * [3]	[1] * [4]	方向角	夾角	距離
66-48K	-149972.011	-29.447	-40924.399	-10.856	1205100.777353	1628096.151416	177-24-09	88-38-05	29.215
66-27	-150001.196	-28.623	-40923.075	13.469	1171341.175725	-2020366.108924	87-21-02	89-56-53	12.158
66-16	-150000.634	29.447	-40910.930	10.856	-1204704.155710	-1628406.882704	357-26-41	90-05-39	28.914
66-35K	-149971.749	28.623	-40912.219	-13.469	-1171030.444437	2019969.487281	268-46-04	91-19-23	12.183
合計				倍面積 面積	707.352931 353.67	-707.352931 353.67			82.470

面積 (座標法) 計算書

地番 = 66-14

測点名	[1] X (i)	[2] X (i+1)-X (i-1)	[3] Y (i)	[4] Y (i+1)-Y (i-1)	[2] * [3]	[1] * [4]	方向角	夾角	距離
66-28	-149972.385	-28.390	-40938.905	-11.359	1162255.512950	1703536.321215	177-14-42	88-45-18	28.087
66-8K	-150000.440	-29.402	-40937.555	2.829	1203645.992110	-424351.244760	132-19-33	135-04-51	2.000
66-7K	-150001.787	-0.839	-40936.076	12.663	34345.367764	-1899472.628781	87-23-57	135-04-24	11.196
66-63	-150001.279	29.737	-40924.892	9.880	-1216983.513404	-1482012.636520	357-26-44	90-02-47	29.258
66-64K	-149972.050	28.894	-40926.196	-14.013	-1182521.507224	2101558.336650	268-29-24	91-02-40	12.713
合計				倍面積 面積	741.852196 370.92	-741.852196 370.92			83.254

面積 (座標法) 計算書

地番 = 66-15

測点名	[1] X (i)	[2] X (i+1)-X (i-1)	[3] Y (i)	[4] Y (i+1)-Y (i-1)	[2] * [3]	[1] * [4]	方向角	夾角	距離
66-9K	-149949.419	-1.338	-40940.011	-41.078	54777.734718	6159622.233682	177-34-25	88-56-43	0.354
66-29	-149949.773	-22.966	-40939.996	1.106	940227.948136	-165844.448938	177-14-16	179-39-51	22.638
66-28	-149972.385	-22.277	-40938.905	13.800	911995.986685	-2069618.913000	88-29-24	91-15-08	12.713
66-64K	-149972.050	0.374	-40926.196	14.506	-15306.397304	-2175494.557300	88-45-24	180-16-00	1.797
66-48K	-149972.011	0.301	-40924.399	13.977	-12318.244099	-2096158.797747	88-46-04	180-00-40	12.183
66-35K	-149971.749	0.295	-40912.219	13.313	-12069.104605	-1996573.894437	88-19-54	179-33-50	1.133
66-47K	-149971.716	0.057	-40911.086	1.986	-2331.931902	-297843.827976	88-23-18	180-03-24	0.853
66-66K	-149971.692	0.348	-40910.233	13.006	-14236.761084	-1950531.826152	88-28-22	180-05-04	12.157
66-45	-149971.368	23.257	-40898.080	11.315	-951166.646560	-1696926.028920	357-54-26	89-26-04	22.948
66-49K	-149948.435	21.949	-40898.918	-41.931	-897690.351182	6287487.827985	268-37-42	90-43-16	41.105
合計				倍面積 面積	1882.232803 941.11	-1882.232803 941.11			127.881

面積 (座標法) 計算書

地番 = 66-16

測点名	[1] X (i)	[2] X (i+1)-X (i-1)	[3] Y (i)	[4] Y (i+1)-Y (i-1)	[2] * [3]	[1] * [4]	方向角	夾角	距離
66-49K	-149948.435	1.549	-40898.918	41.072	-63352.423982	-6158682.122320	357-52-17	89-14-35	0.565
66-50K	-149947.870	-0.418	-40898.939	-41.116	17095.756502	6165256.622920	268-37-47	90-45-30	41.107
66-30K	-149948.853	-1.549	-40940.034	-41.072	63416.112666	6158699.290416	177-40-23	89-02-36	0.566
66-9K	-149949.419	0.418	-40940.011	41.116	-17112.924598	-6165320.311604	88-37-42	90-57-19	41.105
合計				倍面積 面積	46.520588 23.26	-46.520588 23.26			83.343

面積 (座標法) 計算書

地番 = 66-17

測点名	[1] X (i)	[2] X (i+1)-X (i-1)	[3] Y (i)	[4] Y (i+1)-Y (i-1)	[2] * [3]	[1] * [4]	方向角	夾角	距離
66-50K	-149947.870	5.383	-40898.939	40.934	-220158.988637	-6137966.110580	357-54-16	89-16-29	4.403
66-68	-149943.470	3.416	-40899.100	-41.276	-139711.325600	6189066.667720	268-37-44	90-43-28	41.127
66-67	-149944.454	-5.383	-40940.215	-40.934	220381.177345	6137826.280036	177-38-38	89-00-54	4.403
66-30K	-149948.853	-3.416	-40940.034	41.276	139851.156144	-6189288.856428	88-37-47	90-59-09	41.107
合計				倍面積 面積	362.019252 181.00	-362.019252 181.00			91.040

面積 (座標法) 計算書

地番 = 66-18

測点名	[1] X (i)	[2] X (i+1)-X (i-1)	[3] Y (i)	[4] Y (i+1)-Y (i-1)	[2] * [3]	[1] * [4]	方向角	夾角	距離
66-32	-149932.628	-6.841	-40940.626	-40.898	280074.822466	6131944.619944	178-15-35	89-37-45	5.862
66-10	-149938.487	-7.564	-40940.448	0.241	309673.548672	-36135.175367	177-53-02	179-37-27	1.706
66-69	-149940.192	-0.740	-40940.385	41.184	30295.884900	-6175136.867328	88-39-20	90-46-18	41.132
66-70K	-149939.227	8.546	-40899.264	40.835	-349525.110144	-6122768.334545	357-50-22	89-11-02	7.586
66-52K	-149931.646	6.599	-40899.550	-41.362	-269896.130450	6201472.741852	268-37-50	90-47-28	41.088
合計				倍面積 面積	623.015444 311.50	-623.015444 311.50			97.374



**面積 (座標法) 計算書**

地番 = 66-19  
測点名

	[1] X (i)	[2] X (i+1)-X (i-1)	[3] Y (i)	[4] Y (i+1)-Y (i-1)	[2]*[3]	[1]*[4]	方向角	夾角	距離
66-32	-149932.628	-4.753	-40940.626	41.251	194590.795378	-6184870.837628	88-37-50	90-22-42	41.088
66-52K	-149931.646	6.696	-40899.550	40.860	-273863.386800	-6126207.055560	357-50-07	89-12-17	5.718
66-41	-149925.932	28.455	-40899.766	-1.129	-1163802.841530	169266.377228	357-42-03	179-51-56	22.759
66-37	-149903.191	31.234	-40900.679	-1.233	-1277491.807886	184830.634503	357-50-32	180-08-29	8.499
66-36	-149894.698	8.033	-40900.999	-9.061	-328557.724967	1358195.858578	266-59-15	89-08-43	8.753
66-34	-149895.158	-0.678	-40909.740	-13.192	27736.803720	1977416.924336	267-11-46	180-12-31	4.456
66-104	-149895.376	-1.136	-40914.191	-22.419	46478.520976	3360504.434544	267-04-31	179-52-45	17.991
66-103	-149896.294	-1.383	-40932.159	-26.897	56609.175897	4031760.619718	267-01-08	179-56-37	8.941
66-33	-149896.759	-7.989	-40941.088	-8.952	327078.352032	1341875.786568	180-10-31	93-09-23	7.524
66-13	-149904.283	-19.135	-40941.111	0.061	783408.158985	-9144.161263	179-35-08	179-24-37	11.611
66-12	-149915.894	-22.610	-40941.027	0.310	925676.620470	-46473.927140	178-49-22	179-14-14	11.001
66-11	-149926.893	-16.734	-40940.801	0.401	685103.363934	-60120.684093	178-15-08	179-25-46	5.738
合計				倍面積 面積	2966.030209 1483.01	-2966.030209 1483.01			154.079

**面積 (座標法) 計算書**

地番 = 66-20  
測点名

	[1] X (i)	[2] X (i+1)-X (i-1)	[3] Y (i)	[4] Y (i+1)-Y (i-1)	[2]*[3]	[1]*[4]	方向角	夾角	距離
66-35K	-149971.749	-28.918	-40912.219	0.156	1183099.549042	-23395.592844	177-26-41	89-06-47	28.914
66-16	-150000.634	-28.835	-40910.930	2.419	1179666.666550	-362851.533646	87-27-59	90-01-18	1.131
66-26	-150000.584	28.918	-40909.800	-0.156	-1183029.596400	23400.091104	357-26-57	89-58-58	28.897
66-47K	-149971.716	28.835	-40911.086	-2.419	-1179671.164810	362781.581004	268-19-54	90-52-57	1.133
合計				倍面積 面積	65.454382 32.72	-65.454382 32.72			60.075

**面積 (座標法) 計算書**

地番 = 66-21  
測点名

	[1] X (i)	[2] X (i+1)-X (i-1)	[3] Y (i)	[4] Y (i+1)-Y (i-1)	[2]*[3]	[1]*[4]	方向角	夾角	距離
66-64K	-149972.050	-29.268	-40926.196	-0.493	1197827.904528	73936.220650	177-26-44	88-41-20	29.258
66-63	-150001.279	-29.146	-40924.892	3.121	1192796.902232	-468153.991759	87-23-04	89-56-20	1.819
66-27	-150001.196	29.268	-40923.075	0.493	-1197736.559100	-73950.589628	357-24-09	90-01-05	29.215
66-48K	-149972.011	29.146	-40924.399	-3.121	-1192782.533254	468062.646331	268-45-24	91-21-15	1.797
合計				倍面積 面積	105.714406 52.85	-105.714406 52.85			62.089

面積 (座標法) 計算書

地番 = 66-22  
測点名

	[1] X (i)	[2] X (i+1)-X (i-1)	[3] Y (i)	[4] Y (i+1)-Y (i-1)	[2] * [3]	[1] * [4]	方向角	夾角	距離
66-22K	-149930.906	8.435	-40868.098	31.057	-344722.406630	-4656404.147642	356-56-50	90-01-02	6.760
66-55	-149924.156	4.974	-40868.458	-31.668	-203279.710092	4747798.172208	266-45-12	89-48-22	31.358
66-41	-149925.932	-8.435	-40899.766	-31.057	344989.526210	4656249.670124	177-50-29	91-05-17	6.664
66-42K	-149932.591	-4.974	-40899.515	31.668	203434.187610	-4748065.291788	86-55-48	89-05-19	31.462
合計				倍面積 面積	421.597098 210.79	-421.597098 210.79			76.244

面積 (座標法) 計算書

地番 = 66-23  
測点名

	[1] X (i)	[2] X (i+1)-X (i-1)	[3] Y (i)	[4] Y (i+1)-Y (i-1)	[2] * [3]	[1] * [4]	方向角	夾角	距離
66-42K	-149932.591	-11.245	-40899.515	-31.056	459915.046175	4656306.546096	177-50-15	90-54-27	9.567
66-43	-149942.151	-7.867	-40899.154	31.927	321753.644518	-4787203.054977	86-55-48	89-05-33	31.611
66-23	-149940.458	11.245	-40867.588	31.056	-459556.027060	-4656550.863648	356-56-38	90-00-50	9.566
66-22K	-149930.906	7.867	-40868.098	-31.927	-321509.326966	4786844.035862	266-55-48	89-59-10	31.462
合計				倍面積 面積	603.336667 301.66	-603.336667 301.66			82.206

面積 (座標法) 計算書

地番 = 66-24  
測点名

	[1] X (i)	[2] X (i+1)-X (i-1)	[3] Y (i)	[4] Y (i+1)-Y (i-1)	[2] * [3]	[1] * [4]	方向角	夾角	距離
66-61K	-149878.739	16.071	-40906.996	-4.023	-657416.332716	602962.166997	267-07-27	89-22-38	3.388
66-15	-149878.909	-0.705	-40910.380	-3.320	28841.817900	497597.977880	173-10-42	86-03-15	0.539
66-102	-149879.444	-16.249	-40910.316	0.640	664751.724684	-95922.844160	177-54-03	184-43-21	15.725
66-34	-149895.158	-15.536	-40909.740	3.959	635573.720640	-593434.930522	86-59-17	89-05-14	3.388
66-60K	-149894.980	16.419	-40906.357	2.744	-671641.475583	-411311.825120	357-44-49	90-45-32	16.254
合計				倍面積 面積	109.454925 54.72	-109.454925 54.72			39.294

面積 (座標法) 計算書

地番 = 66-25  
測点名

	[1] X (i)	[2] X (i+1)-X (i-1)	[3] Y (i)	[4] Y (i+1)-Y (i-1)	[2] * [3]	[1] * [4]	方向角	夾角	距離
66-47K	-149971.716	-28.892	-40911.086	0.433	1182003.096712	-64937.753028	177-26-57	89-03-39	28.897
66-26	-150000.584	-28.832	-40909.800	2.140	1179511.353600	-321001.249760	87-35-10	90-08-13	0.855
66-65	-150000.548	28.892	-40908.946	-0.433	-1181941.267832	64950.237284	357-26-47	89-51-37	28.885
66-66K	-149971.692	28.832	-40910.233	-2.140	-1179523.837856	320939.420880	268-23-18	90-56-31	0.853
合計				倍面積 面積	49.344624 24.67	-49.344624 24.67			59.490

面積 (座標法) 計算書

地番 = 66-26  
測点名

	[1] X (i)	[2] X (i+1)-X (i-1)	[3] Y (i)	[4] Y (i+1)-Y (i-1)	[2] * [3]	[1] * [4]	方向角	夾角	距離
66-69	-149940.192	-5.227	-40940.385	-40.951	213995.392395	6140200.802592	177-42-57	89-03-37	4.265
66-67	-149944.454	-3.278	-40940.215	41.285	134202.024770	-6190456.783390	88-37-44	90-54-47	41.127
66-68	-149943.470	2.303	-40899.100	41.061	-94190.627300	-6156828.821670	357-39-20	89-01-36	1.320
66-43	-149942.151	4.243	-40899.154	-0.164	-173535.110422	24590.512764	357-50-44	180-11-24	2.926
66-70K	-149939.227	1.959	-40899.264	-41.231	-80121.658176	6182144.268437	268-39-20	90-48-36	41.132
合計				倍面積 面積	350.021267 175.01	-350.021267 175.01			90.770

面積 (座標法) 計算書

地番 = 66-27  
測点名

	[1] X (i)	[2] X (i+1)-X (i-1)	[3] Y (i)	[4] Y (i+1)-Y (i-1)	[2] * [3]	[1] * [4]	方向角	夾角	距離
66-72K	-149902.794	-24.244	-40893.599	8.815	991424.414156	-1321393.129110	86-47-05	89-01-24	7.862
66-39K	-149902.353	25.084	-40885.749	6.863	-1025578.127916	-1028779.848639	357-42-23	90-55-18	24.663
66-19	-149877.710	24.244	-40886.736	-8.815	-991258.027584	1321172.013650	267-04-56	89-22-33	7.838
66-71K	-149878.109	-25.084	-40894.564	-6.863	1025799.243376	1028613.462067	177-45-41	90-40-45	24.704
合計				倍面積 面積	387.502032 193.75	-387.502032 193.75			65.067