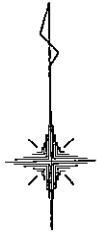
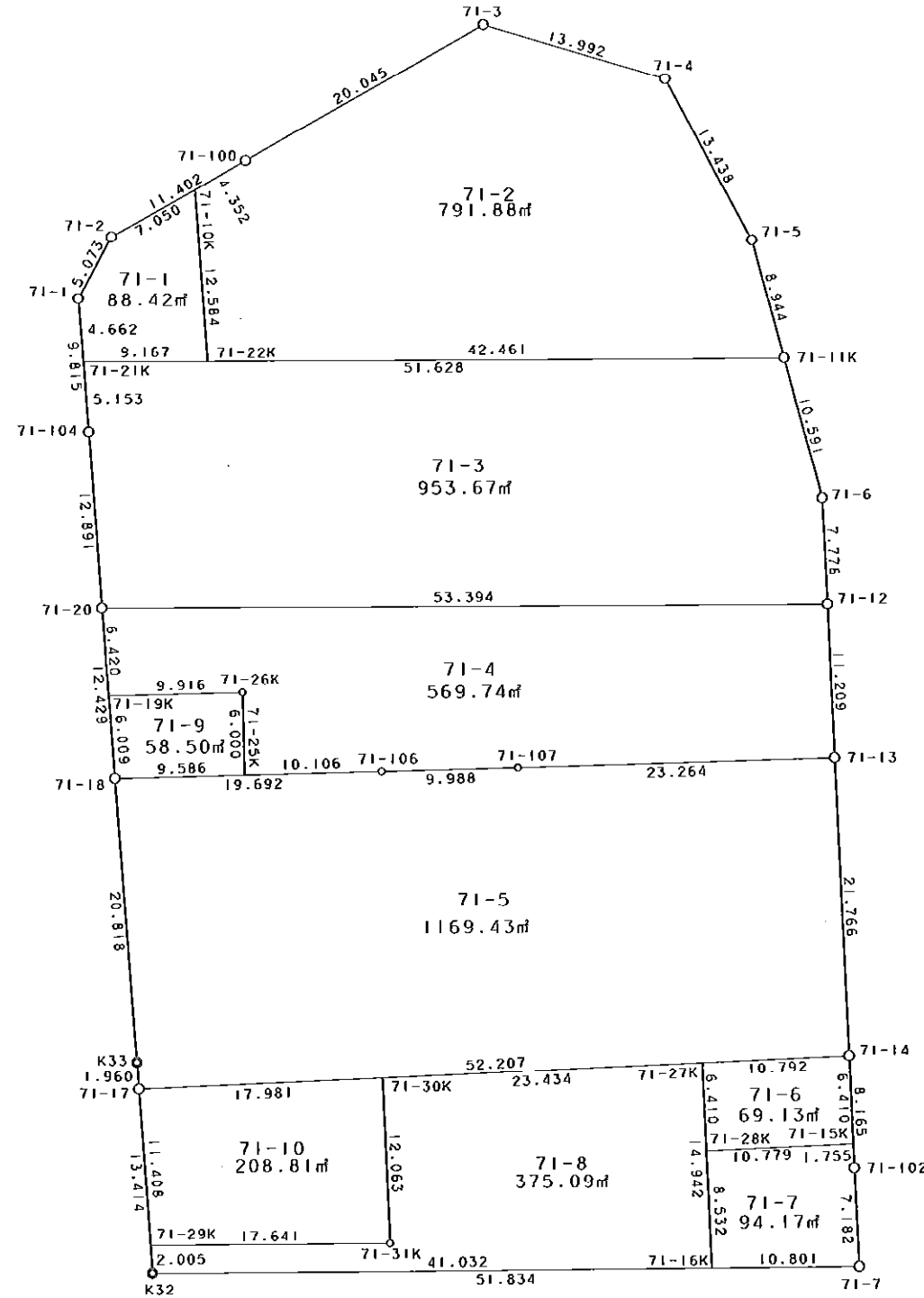


71街区



S = 1 / 500



凡 例

記号	名称
⊙	地区界点
○	街区点
○	画地点(折れ点)
┆	画地点(直線中)

面積 (座標法) 計算書

地番 = 71街区

測点名	[1] X (i)	[2] X (i+1)-X (i-1)	[3] Y (i)	[4] Y (i+1)-Y (i-1)	[2] * [3]	[1] * [4]	方向角	夾角	距離
71-2	-149668.747	-9.915	-40616.848	-12.457	402716.047920	1864423.581379	208-57-17	147-39-27	5.073
71-1	-149673.186	-14.231	-40619.304	-1.787	578053.315224	267465.983382	176-05-30	147-08-13	9.815
71-104	-149682.978	-22.655	-40618.635	1.524	920215.175925	-228116.858472	176-11-50	180-06-20	12.891
71-20	-149695.841	-25.263	-40617.780	1.700	1026126.976140	-254482.929700	176-06-06	179-54-16	12.429
71-18	-149708.241	-33.169	-40616.935	2.266	1347223.117015	-339238.874106	176-05-09	179-59-03	20.818
K33	-149729.010	-22.724	-40615.514	1.555	922946.940136	-232828.610550	176-04-44	179-59-35	1.960
71-17	-149730.965	-15.339	-40615.380	1.025	622999.313820	-153474.239125	176-11-29	180-06-45	13.414
K32	-149744.349	-13.633	-40614.489	52.724	553697.328537	-7895121.056676	90-16-31	94-05-02	51.834
71-7	-149744.598	6.928	-40562.656	51.560	-281018.080768	-7720831.472880	357-49-18	87-32-47	7.182
71-102	-149737.421	15.337	-40562.929	-0.545	-622113.642073	81606.894445	358-05-27	180-16-09	8.165
71-14	-149729.261	29.911	-40563.201	-1.068	-1213285.905111	159910.850748	357-54-15	179-48-48	21.766
71-13	-149707.510	32.953	-40563.997	-1.187	-1336705.393141	177702.814370	358-00-03	180-05-48	11.209
71-12	-149696.308	18.975	-40564.388	-0.682	-769709.262300	102092.882056	357-51-22	179-51-19	7.778
71-6	-149688.535	18.019	-40564.679	-2.972	-730934.950901	444874.326020	345-20-12	167-28-50	10.591
71-11K	-149678.289	18.900	-40567.360	-4.941	-766723.104000	739560.425949	345-21-51	180-01-39	8.944
71-5	-149669.635	20.553	-40569.620	-8.504	-833827.399860	1272790.576040	332-18-42	166-56-51	13.438
71-4	-149657.736	15.966	-40575.864	-19.632	-647834.244624	2938080.673152	286-53-52	134-35-10	13.992
71-3	-149653.669	-5.535	-40589.252	-30.983	224661.509820	4636719.626627	241-22-40	134-28-48	20.045
71-100	-149663.271	-15.078	-40606.847	-27.596	612270.039066	4130107.626516	241-17-50	179-55-10	11.402
合計				倍面積 面積	8757.780825 4378.89	-8757.780825 4378.89			262.746

地番	筆種別	面積	坪数
71-1	筆界	88.42	26.74
71-2	筆界	791.88	239.54
71-3	筆界	953.67	288.48
71-4	筆界	569.74	172.34
71-5	筆界	1169.43	353.75
71-6	筆界	69.13	20.91
71-7	筆界	94.17	28.48
71-8	筆界	375.09	113.46
71-9	筆界	58.50	17.69
71-10	筆界	208.81	63.16
	筆合	4378.84	1324.55

面積 (座標法) 計算書

地番 = 71-1
測点名

	[1] X (i)	[2] X (i+1)-X (i-1)	[3] Y (i)	[4] Y (i+1)-Y (i-1)	[2]*[3]	[1]*[4]	方向角	夾角	距離
71-10K	-149665.361	9.170	-40610.664	-7.029	-372399.788880	1051997.822469	241-17-51	65-08-51	7.050
71-2	-149668.747	-7.825	-40616.848	-8.640	317826.835600	1293137.974080	208-57-17	147-39-26	5.073
71-1	-149673.186	-9.090	-40619.304	-2.138	369229.473360	320001.271668	176-05-19	147-08-02	4.662
71-21K	-149677.837	-4.731	-40618.986	9.485	192168.422766	-1419694.283945	90-30-00	94-24-41	9.167
71-22K	-149677.917	12.476	-40609.819	8.322	-506648.101844	-1245619.625274	356-09-00	85-39-00	12.584
合計				倍面積 面積	176.841002 88.42	-176.841002 88.42			38.536

面積 (座標法) 計算書

地番 = 71-2
測点名

	[1] X (i)	[2] X (i+1)-X (i-1)	[3] Y (i)	[4] Y (i+1)-Y (i-1)	[2]*[3]	[1]*[4]	方向角	夾角	距離
71-22K	-149677.917	-12.928	-40609.819	43.304	525003.740032	-6481652.517768	90-30-07	94-21-07	42.461
71-11K	-149678.289	8.282	-40567.360	40.199	-335978.875520	-6016917.539511	345-21-51	74-51-44	8.944
71-5	-149669.635	20.553	-40569.620	-8.504	-833827.399860	1272790.576040	332-18-42	166-56-51	13.438
71-4	-149657.736	15.966	-40575.864	-19.632	-647834.244624	2938080.673152	286-53-52	134-35-10	13.992
71-3	-149653.669	-5.535	-40589.252	-30.983	224661.509820	4636719.626627	241-22-40	134-28-48	20.045
71-100	-149663.271	-11.692	-40606.847	-21.412	474775.255124	3204589.958652	241-17-49	179-55-09	4.352
71-10K	-149665.361	-14.646	-40610.664	-2.972	594783.784944	444805.452892	176-09-00	114-51-11	12.584
合計				倍面積 面積	1583.769916 791.88	-1583.769916 791.88			115.816

面積 (座標法) 計算書

地番 = 71-3
測点名

	[1] X (i)	[2] X (i+1)-X (i-1)	[3] Y (i)	[4] Y (i+1)-Y (i-1)	[2]*[3]	[1]*[4]	方向角	夾角	距離
71-21K	-149677.837	-4.689	-40618.986	-51.275	190462.425354	7674731.092175	176-05-39	85-35-33	5.153
71-104	-149682.978	-18.004	-40618.635	1.206	731297.904540	-180517.671468	176-11-50	180-06-11	12.891
71-20	-149695.841	-13.330	-40617.780	54.247	541435.007400	-8120550.286727	90-30-04	94-18-14	53.394
71-12	-149696.308	7.306	-40564.388	53.101	-296363.418728	-7949023.651108	357-51-22	87-21-18	7.778
71-6	-149688.535	18.019	-40564.679	-2.972	-730934.950901	444874.326020	345-20-12	167-28-50	10.591
71-11K	-149678.289	10.698	-40567.360	-54.307	-433989.617280	8128578.840723	270-30-06	105-09-54	51.628
合計				倍面積 面積	1907.350385 953.67	-1907.350385 953.67			141.435

面積 (座標法) 計算書

地番 = 71-4
測点名

	[1] X (i)	[2] X (i+1)-X (i-1)	[3] Y (i)	[4] Y (i+1)-Y (i-1)	[2] * [3]	[1] * [4]	方向角	夾角	距離
71-20	-149695.841	-5.938	-40617.780	-52.956	241188.377640	7927292.955996	176-06-21	85-36-17	6.420
71-19K	-149702.246	-6.275	-40617.344	10.351	254873.833600	-1549567.948346	89-14-56	93-08-35	9.916
71-26K	-149702.116	-5.869	-40607.429	9.994	238325.000801	-1496122.947304	179-14-44	269-59-48	6.000
71-25K	-149708.115	-5.867	-40607.350	10.184	238243.322450	-1524627.443160	89-15-06	90-00-22	10.106
71-106	-149707.983	0.250	-40597.245	20.092	-10149.311250	-3007932.794436	89-19-23	180-04-17	9.988
71-107	-149707.865	0.473	-40587.258	33.248	-19197.773034	-4977487.095520	89-07-32	179-48-09	23.264
71-13	-149707.510	11.557	-40563.997	22.870	-468798.113329	-3423810.753700	358-00-03	88-52-31	11.209
71-12	-149696.308	11.669	-40564.388	-53.783	-473345.843572	8051116.533164	270-30-04	92-30-01	53.394
合計				倍面積 面積	1139.493306 569.74	-1139.493306 569.74			130.297

面積 (座標法) 計算書

地番 = 71-5
測点名

	[1] X (i)	[2] X (i+1)-X (i-1)	[3] Y (i)	[4] Y (i+1)-Y (i-1)	[2] * [3]	[1] * [4]	方向角	夾角	距離
71-18	-149708.241	-21.027	-40616.935	-18.269	854052.292245	2735019.854829	176-05-09	86-50-12	20.818
K33	-149729.010	-22.724	-40615.514	1.555	922946.940136	-232828.610550	176-04-44	179-59-35	1.960
71-17	-149730.965	-0.251	-40615.380	52.313	10194.460380	-7832875.972045	88-07-46	92-03-02	52.207
71-14	-149729.261	23.455	-40563.201	51.383	-951409.879455	-7693538.617963	357-54-15	89-46-29	21.766
71-13	-149707.510	21.396	-40563.997	-24.057	-867907.279812	3601513.568070	269-07-32	91-13-17	23.264
71-107	-149707.865	-0.473	-40587.258	-33.248	19197.773034	4977487.095520	269-19-23	180-11-51	9.988
71-106	-149707.983	-0.376	-40597.245	-29.677	15264.564120	4442883.811491	269-14-57	179-55-34	19.692
合計				倍面積 面積	2338.870648 1169.43	-2338.870648 1169.43			149.695

面積 (座標法) 計算書

地番 = 71-6
測点名

	[1] X (i)	[2] X (i+1)-X (i-1)	[3] Y (i)	[4] Y (i+1)-Y (i-1)	[2] * [3]	[1] * [4]	方向角	夾角	距離
71-15K	-149735.667	6.758	-40562.987	10.559	-274124.666146	-1581058.907853	358-05-12	89-57-29	6.410
71-14	-149729.261	6.054	-40563.201	-11.000	-245569.618854	1647021.871000	268-07-51	90-02-39	10.792
71-27K	-149729.613	-6.758	-40573.987	-10.559	274199.004146	1580994.983667	177-58-14	89-50-23	6.410
71-28K	-149736.019	-6.054	-40573.760	11.000	245633.543040	-1647096.209000	88-07-43	90-09-29	10.779
合計				倍面積 面積	138.262186 69.13	-138.262186 69.13			34.391

面積 (座標法) 計算書

地番 = 71-7

測点名	[1] X (i)	[2] X (i+1)-X (i-1)	[3] Y (i)	[4] Y (i+1)-Y (i-1)	[2] * [3]	[1] * [4]	方向角	夾角	距離
71-28K	-149736.019	-8.879	-40573.760	-10.470	360254.415040	1567736.118930	177-57-54	89-50-11	8.532
71-16K	-149744.546	-8.579	-40573.457	11.104	348079.687603	-1662763.438784	90-16-33	92-18-39	10.801
71-7	-149744.598	7.125	-40562.656	10.528	-289008.924000	-1576511.127744	357-49-18	87-32-45	7.182
71-102	-149737.421	8.931	-40562.929	-0.331	-362267.518899	49563.086351	358-06-22	180-17-04	1.755
71-15K	-149735.667	1.402	-40562.987	-10.831	-56869.307774	1621787.009277	268-07-43	90-01-21	10.779
合計					188.351970	-188.351970			39.049
				倍面積 面積	94.17	94.17			

面積 (座標法) 計算書

地番 = 71-8

測点名	[1] X (i)	[2] X (i+1)-X (i-1)	[3] Y (i)	[4] Y (i+1)-Y (i-1)	[2] * [3]	[1] * [4]	方向角	夾角	距離
71-29K	-149742.348	-1.916	-40614.622	-17.508	77817.615752	2621689.028784	176-11-50	85-55-16	2.005
K32	-149744.349	-2.198	-40614.489	41.165	89270.646822	-6164226.126585	90-16-30	94-04-40	41.032
71-16K	-149744.546	14.736	-40573.457	40.502	-597890.462352	-6064953.602092	357-58-02	87-41-32	14.942
71-27K	-149729.613	14.168	-40573.987	-23.952	-574852.247816	3586323.690576	268-07-45	90-09-43	23.434
71-30K	-149730.378	-12.820	-40597.409	-22.994	520458.783380	3442900.311732	177-58-00	89-50-15	12.063
71-31K	-149742.433	-11.970	-40596.981	-17.213	485945.862570	2577516.499229	270-16-34	272-18-34	17.641
合計					750.198356	-750.198356			111.117
				倍面積 面積	375.09	375.09			

面積 (座標法) 計算書

地番 = 71-9

測点名	[1] X (i)	[2] X (i+1)-X (i-1)	[3] Y (i)	[4] Y (i+1)-Y (i-1)	[2] * [3]	[1] * [4]	方向角	夾角	距離
71-26K	-149702.116	5.869	-40607.429	-9.994	-238325.000801	1496122.947304	269-14-56	90-00-12	9.916
71-19K	-149702.246	-6.125	-40617.344	-9.506	248781.232000	1423069.550476	176-05-50	86-50-54	6.009
71-18	-149708.241	-5.869	-40616.935	9.994	238380.791515	-1496184.160554	89-14-49	93-08-59	9.586
71-25K	-149708.115	6.125	-40607.350	9.506	-248720.018750	-1423125.341190	359-14-44	89-59-55	6.000
合計					117.003964	-117.003964			31.511
				倍面積 面積	58.50	58.50			

面積 (座標法) 計算書

地番 = 71-10

測点名	[1] X (i)	[2] X (i+1)-X (i-1)	[3] Y (i)	[4] Y (i+1)-Y (i-1)	[2] * [3]	[1] * [4]	方向角	夾角	距離
71-30K	-149730.378	11.468	-40597.409	-18.399	-465571.086412	2754889.224822	268-07-45	90-09-45	17.981
71-17	-149730.965	-11.970	-40615.380	-17.213	486166.098600	2577319.100545	176-11-25	88-03-40	11.408
71-29K	-149742.348	-11.468	-40614.622	18.399	465768.485096	-2755109.460852	90-16-34	94-05-09	17.641
71-31K	-149742.433	11.970	-40596.981	17.213	-485945.862570	-2577516.499229	357-58-00	87-41-26	12.063
合計					417.634714	-417.634714			59.093
				倍面積 面積	208.81	208.81			