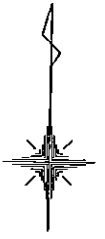
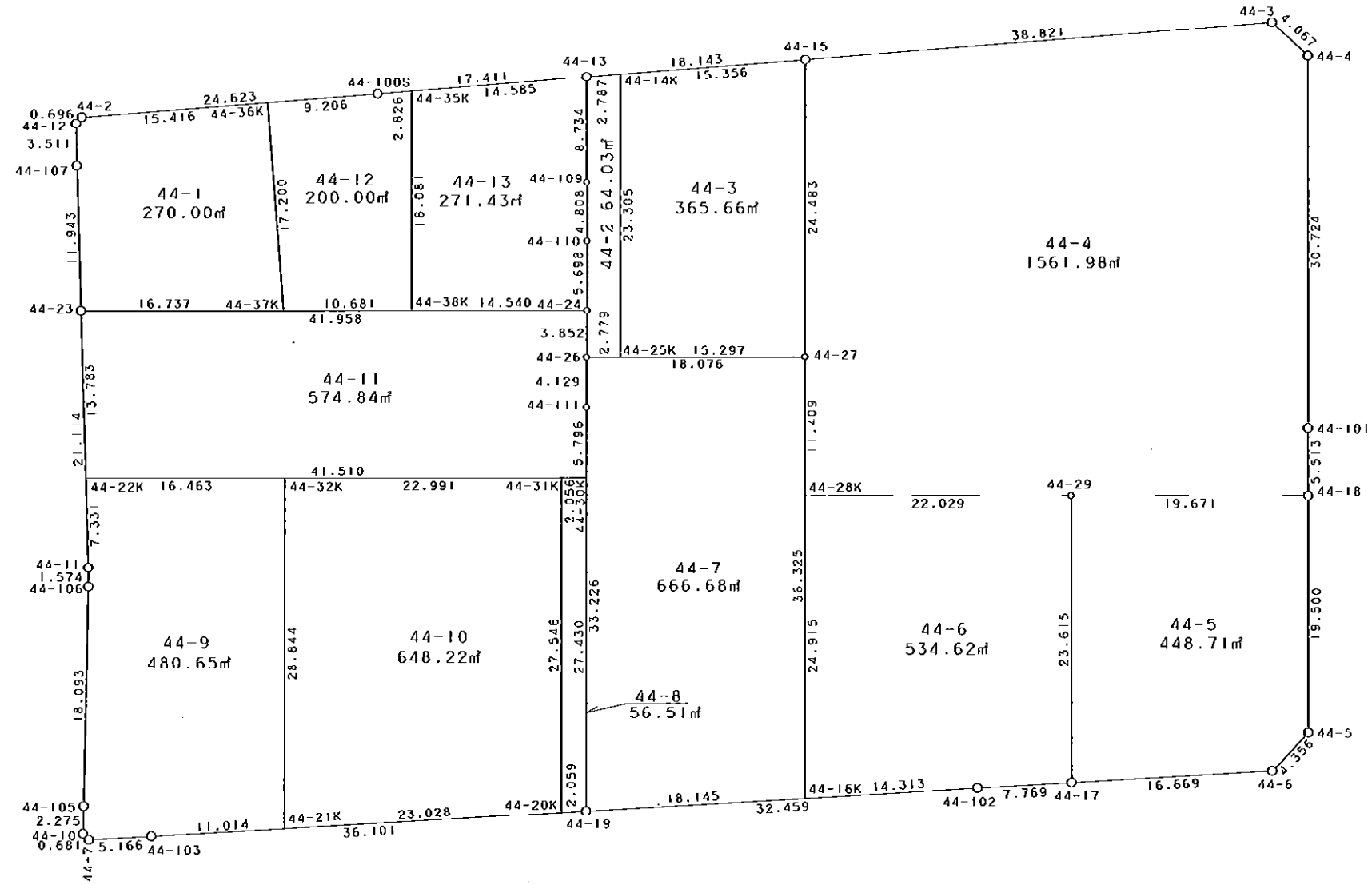


西部第4地区土地区画整理事業 出来形確認測量（原子図）

44街区



S = 1 / 500



凡 例

記号	名称
⊙	地区界点
○	街区点
○	画地点(折れ点)
┆	画地点(直線中)

面積 (座標法) 計算書

地番 = 44街区

測点名	[1] X (i)	[2] X (i+1)-X (i-1)	[3] Y (i)	[4] Y (i+1)-Y (i-1)	[2]*[3]	[1]*[4]	方向角	夾角	距離
44-2	-149839.934	-2.908	-41272.413	-24.966	120020.177004	3740903.792244	221-16-16	136-49-46	0.696
44-12	-149840.457	-4.031	-41272.872	-0.304	166370.947032	45551.498928	177-28-12	136-11-56	3.511
44-107	-149843.965	-15.436	-41272.717	0.744	637085.659612	-111483.909960	177-10-23	179-42-11	11.943
44-23	-149855.893	-33.016	-41272.128	1.643	1362640.578048	-246213.232199	177-08-19	179-57-56	21.114
44-11	-149876.981	-22.662	-41271.074	1.089	935285.078988	-163216.032309	178-43-34	181-35-15	1.574
44-106	-149878.555	-19.667	-41271.039	0.038	811677.524013	-5695.385090	179-59-26	181-15-52	18.093
44-105	-149896.648	-20.368	-41271.036	-0.005	840608.461248	749.483240	180-12-05	180-12-39	2.275
44-10	-149898.923	-2.748	-41271.044	0.482	113412.828912	-72251.280886	133-59-19	133-47-14	0.681
44-7	-149899.396	-0.088	-41270.554	5.642	3631.808752	-845732.392232	85-43-35	131-44-16	5.166
44-103	-149899.011	3.140	-41265.402	41.148	-129573.362280	-6168044.504628	85-37-24	179-53-49	36.101
44-19	-149896.256	5.245	-41229.406	68.359	-216248.234470	-10246758.163904	85-36-01	179-58-37	32.459
44-102	-149893.766	3.064	-41197.043	40.111	-126227.739752	-6012388.848026	85-45-47	180-09-46	7.769
44-17	-149893.192	1.830	-41189.295	24.370	-75376.409850	-3652897.089040	85-40-44	179-54-57	16.669
44-6	-149891.936	4.471	-41172.673	19.561	-184083.020983	-2932036.160096	42-25-55	136-45-11	4.356
44-5	-149888.721	22.711	-41169.734	2.543	-935005.828874	-381167.017503	358-50-11	136-24-16	19.500
44-18	-149869.225	25.008	-41170.130	-0.513	-1029582.611040	76882.912425	358-47-02	179-56-51	5.513
44-101	-149863.713	36.230	-41170.247	-0.715	-1491598.048810	107152.554795	358-53-05	180-06-03	30.724
44-4	-149832.995	33.419	-41170.845	-3.639	-1375888.469055	545242.268805	311-36-41	132-43-36	4.067
44-3	-149830.294	-1.073	-41173.886	-41.678	44179.579678	6244626.993332	264-25-16	132-48-35	38.821
44-15	-149834.068	-5.527	-41212.523	-56.695	227781.614621	8494842.485260	264-27-19	180-02-03	18.143
44-13	-149835.821	-3.481	-41230.581	-35.383	143523.652461	5301640.854443	264-18-15	179-50-56	17.411
44-100S	-149837.549	-4.113	-41247.906	-41.832	169652.637378	6268004.349768	264-26-30	180-08-15	24.623
合計				倍面積 面積	12286.822633 6143.41	-12286.822633 6143.41			321.209

地番	筆種別	面積	坪数
44-1	筆界	270.00	81.67
44-2	筆界	64.03	19.37
44-3	筆界	365.66	110.61
44-4	筆界	1561.98	472.50
44-5	筆界	448.71	135.73
44-6	筆界	534.62	161.72
44-7	筆界	666.68	201.67
44-8	筆界	56.51	17.09
44-9	筆界	480.65	145.39
44-10	筆界	648.22	196.08
44-11	筆界	574.84	173.88
44-12	筆界	200.00	60.50
44-13	筆界	271.43	82.10
	合計	6143.33	1858.31

面積 (座標法) 計算書

地番 = 44-1
測点名

	[1] X (i)	[2] X (i+1) - X (i-1)	[3] Y (i)	[4] Y (i+1) - Y (i-1)	[2] * [3]	[1] * [4]	方向角	夾角	距離
44-36K	-149838.441	15.625	-41257.069	-17.019	-644641.703125	2550100.427379	264-26-33	90-01-52	15.416
44-2	-149839.934	-2.016	-41272.413	-15.803	83205.184608	2367920.477002	221-16-16	136-49-43	0.696
44-12	-149840.457	-4.031	-41272.872	-0.304	166370.947032	45551.498928	177-28-12	136-11-56	3.511
44-107	-149843.965	-15.436	-41272.717	0.744	637085.659612	-111483.909960	177-10-23	179-42-11	11.943
44-23	-149855.893	-11.594	-41272.128	17.323	478509.052032	-2595953.634439	88-51-24	91-41-01	16.737
44-37K	-149855.559	17.452	-41255.394	15.059	-719989.136088	-2256674.862981	354-24-41	85-33-17	17.200
合計				倍面積 面積	540.004071 270.00	-540.004071 270.00			65.503

面積 (座標法) 計算書

地番 = 44-2
測点名

	[1] X (i)	[2] X (i+1) - X (i-1)	[3] Y (i)	[4] Y (i+1) - Y (i-1)	[2] * [3]	[1] * [4]	方向角	夾角	距離
44-14K	-149835.552	23.032	-41227.807	-3.230	-949558.850824	483968.832960	264-27-40	85-34-56	2.787
44-13	-149835.821	-9.001	-41230.581	-2.592	371116.459581	388374.448032	178-48-21	94-20-41	8.734
44-109	-149844.553	-13.538	-41230.399	0.307	558177.141662	-46002.277771	178-30-36	179-42-15	4.808
44-110	-149849.359	-10.503	-41230.274	0.221	433041.567822	-33116.708339	179-02-05	180-31-29	5.698
44-24	-149855.056	-9.549	-41230.178	0.145	393706.969722	-21728.983120	179-16-16	180-14-11	3.852
44-26	-149858.908	-3.797	-41230.129	2.827	156550.799813	-423651.132916	88-51-57	89-35-41	2.779
44-25K	-149858.853	23.356	-41227.351	2.322	-962906.009956	-347972.256666	358-52-44	90-00-47	23.305
合計				倍面積 面積	128.077820 64.03	-128.077820 64.03			51.963

面積 (座標法) 計算書

地番 = 44-3
測点名

	[1] X (i)	[2] X (i+1) - X (i-1)	[3] Y (i)	[4] Y (i+1) - Y (i-1)	[2] * [3]	[1] * [4]	方向角	夾角	距離
44-25K	-149858.853	-22.995	-41227.351	15.750	948022.936245	-2360276.934750	88-51-14	89-58-30	15.297
44-27	-149858.547	24.785	-41212.057	14.828	-1021440.832745	-2222102.534916	358-54-34	90-03-20	24.483
44-15	-149834.068	22.995	-41212.523	-15.750	-947681.966385	2359886.571000	264-27-15	85-32-41	15.356
44-14K	-149835.552	-24.785	-41227.807	-14.828	1021831.196495	2221761.565056	178-52-44	94-25-29	23.305
合計				倍面積 面積	731.333610 365.66	-731.333610 365.66			78.441

面積 (座標法) 計算書

地番 = 44-4

測点名	[1] X (i)	[2] X (i+1)-X (i-1)	[3] Y (i)	[4] Y (i+1)-Y (i-1)	[2] * [3]	[1] * [4]	方向角	夾 角	距 離
44-29	-149869.582	0.729	-41189.798	41.694	-30027.362742	-6248662.351908	88-57-36	179-55-39	19.671
44-18	-149869.225	5.869	-41170.130	19.551	-241627.492970	-2930093.217975	358-47-02	89-49-26	5.513
44-101	-149863.713	36.230	-41170.247	-0.715	-1491598.048810	107152.554795	358-53-05	180-06-03	30.724
44-4	-149832.995	33.419	-41170.845	-3.639	-1375888.469055	545242.268805	311-36-41	132-43-36	4.067
44-3	-149830.294	-1.073	-41173.886	-41.678	44179.579678	6244626.993332	264-25-16	132-48-35	38.821
44-15	-149834.068	-28.253	-41212.523	-38.171	1164377.412319	5719316.209628	178-54-34	94-29-18	24.483
44-27	-149858.547	-35.886	-41212.057	0.699	1478935.877502	-104751.124353	178-49-47	179-55-13	11.409
44-28K	-149869.954	-11.035	-41211.824	22.259	454772.477840	-3335955.306086	89-01-57	90-12-10	22.029
合計				倍面積 面積	3123.973762 1561.98	-3123.973762 1561.98			156.717

面積 (座標法) 計算書

地番 = 44-5

測点名	[1] X (i)	[2] X (i+1)-X (i-1)	[3] Y (i)	[4] Y (i+1)-Y (i-1)	[2] * [3]	[1] * [4]	方向角	夾 角	距 離
44-29	-149869.582	-23.967	-41189.798	-19.165	987195.888666	2872250.539030	178-46-46	89-49-10	23.615
44-17	-149893.192	-22.354	-41189.295	17.125	920745.500430	-2566920.913000	85-40-44	86-53-58	16.669
44-6	-149891.936	4.471	-41172.673	19.561	-184083.020983	-2932036.160096	42-25-55	136-45-11	4.356
44-5	-149888.721	22.711	-41169.734	2.543	-935005.828874	-381167.017503	358-50-11	136-24-16	19.500
44-18	-149869.225	19.139	-41170.130	-20.064	-787955.118070	3006976.130400	268-57-36	90-07-25	19.671
合計				倍面積 面積	897.421169 448.71	-897.421169 448.71			83.811

面積 (座標法) 計算書

地番 = 44-6

測点名	[1] X (i)	[2] X (i+1)-X (i-1)	[3] Y (i)	[4] Y (i+1)-Y (i-1)	[2] * [3]	[1] * [4]	方向角	夾 角	距 離
44-29	-149869.582	23.238	-41189.798	-22.529	-957168.525924	3376411.812878	269-01-57	90-15-11	22.029
44-28K	-149869.954	-25.282	-41211.824	-21.516	1041917.334368	3224601.930264	178-49-38	89-47-41	24.915
44-16K	-149894.864	-23.812	-41211.314	14.781	981323.808968	-2215595.984784	85-36-01	86-46-23	14.313
44-102	-149893.766	1.672	-41197.043	22.019	-68881.455896	-3300510.833554	85-45-47	180-09-46	7.769
44-17	-149893.192	24.184	-41189.295	7.245	-996121.910280	-1085976.176040	358-46-46	93-00-59	23.615
合計				倍面積 面積	1069.251236 534.62	-1069.251236 534.62			92.641

面積 (座標法) 計算書

地番 = 44-7

測点名	[1] X (i)	[2] X (i+1)-X (i-1)	[3] Y (i)	[4] Y (i+1)-Y (i-1)	[2]*[3]	[1]*[4]	方向角	夾角	距離
44-27	-149858.547	35.956	-41212.057	-18.815	-1481820.721492	2819588.561805	268-51-20	90-01-39	18.076
44-26	-149858.908	-4.489	-41230.129	-17.994	185082.049081	2696561.190552	178-55-03	90-03-43	4.129
44-111	-149863.036	-37.348	-41230.051	0.723	1539859.944748	-108350.975028	178-53-16	179-58-13	33.226
44-19	-149896.256	-31.828	-41229.406	18.737	1312249.534168	-2808606.148672	85-36-01	86-42-45	18.145
44-16K	-149894.864	37.709	-41211.314	17.349	-1554037.439626	-2600525.995536	358-49-41	93-13-40	36.325
合計				倍面積 面積	1333.366879 666.68	-1333.366879 666.68			109.901

面積 (座標法) 計算書

地番 = 44-8

測点名	[1] X (i)	[2] X (i+1)-X (i-1)	[3] Y (i)	[4] Y (i+1)-Y (i-1)	[2]*[3]	[1]*[4]	方向角	夾角	距離
44-20K	-149896.413	-27.384	-41231.459	2.588	1129082.273256	-387931.916844	85-37-37	86-44-23	2.059
44-19	-149896.256	27.582	-41229.406	1.521	-1137189.476292	-227992.205376	358-53-19	93-15-42	27.430
44-30K	-149868.831	27.384	-41229.938	-2.588	-1129040.622192	387860.534628	268-51-27	89-58-08	2.056
44-31K	-149868.872	-27.582	-41231.994	-1.521	1137260.858508	227950.554312	178-53-14	90-01-47	27.546
合計				倍面積 面積	113.033280 56.51	-113.033280 56.51			59.091

面積 (座標法) 計算書

地番 = 44-9

測点名	[1] X (i)	[2] X (i+1)-X (i-1)	[3] Y (i)	[4] Y (i+1)-Y (i-1)	[2]*[3]	[1]*[4]	方向角	夾角	距離
44-32K	-149869.331	28.511	-41254.980	-17.020	-1176220.734780	2550776.013620	268-51-30	89-58-15	16.463
44-22K	-149869.659	-7.650	-41271.440	-16.094	315726.516000	2412002.291946	177-08-18	88-16-48	7.331
44-11	-149876.981	-8.896	-41271.074	0.401	367147.474304	-60100.669381	178-43-34	181-35-16	1.574
44-106	-149878.555	-19.667	-41271.039	0.038	811677.524013	-5695.385090	179-59-26	181-15-52	18.093
44-105	-149896.648	-20.368	-41271.036	-0.005	840608.461248	749.483240	180-12-05	180-12-39	2.275
44-10	-149898.923	-2.748	-41271.044	0.482	113412.828912	-72251.280886	133-59-19	133-47-14	0.681
44-7	-149899.396	-0.088	-41270.554	5.642	3631.808752	-845732.392232	85-43-35	131-44-16	5.166
44-103	-149899.011	1.226	-41265.402	16.134	-50591.382852	-2418470.643474	85-37-15	179-53-40	11.014
44-21K	-149898.170	29.680	-41254.420	10.422	-1224431.185600	-1562238.727740	358-53-15	93-16-00	28.844
合計				倍面積 面積	961.309997 480.65	-961.309997 480.65			91.441

面積 (座標法) 計算書

地番 = 44-10

測点名	[1] X (i)	[2] X (i+1)-X (i-1)	[3] Y (i)	[4] Y (i+1)-Y (i-1)	[2]*[3]	[1]*[4]	方向角	夾角	距離
44-21K	-149898.170	-27.082	-41254.420	23.521	1117252.202440	-3525754.856570	85-37-27	86-44-12	23.028
44-20K	-149896.413	29.298	-41231.459	22.426	-1207999.285782	-3361576.957938	358-53-14	93-15-47	27.546
44-31K	-149868.872	27.082	-41231.994	-23.521	-1116644.861508	3525065.738312	268-51-22	89-58-08	22.991
44-32K	-149869.331	-29.298	-41254.980	-22.426	1208688.404040	3360969.617006	178-53-15	90-01-53	28.844
合計				倍面積 面積	1296.459190 648.22	-1296.459190 648.22			102.409

面積 (座標法) 計算書

地番 = 44-11
測点名

	[1] X (i)	[2] X (i+1)-X (i-1)	[3] Y (i)	[4] Y (i+1)-Y (i-1)	[2] * [3]	[1] * [4]	方向角	夾角	距離
44-30K	-149868.831	6.623	-41229.938	41.389	-273065.879374	-6202921.046259	358-52-58	90-01-33	5.796
44-111	-149863.036	9.923	-41230.051	-0.191	-409125.796073	28623.839876	358-55-03	180-02-05	4.129
44-26	-149858.908	7.980	-41230.129	-0.127	-329016.429420	19032.081316	359-16-16	180-21-13	3.852
44-24	-149855.056	3.015	-41230.178	-41.999	-124308.986670	6293762.496944	268-51-25	89-35-09	41.958
44-23	-149855.893	-14.603	-41272.128	-41.262	602696.885184	6183353.856966	177-08-20	88-16-55	13.783
44-22K	-149869.659	-12.938	-41271.440	42.190	533969.890720	-6323000.913210	88-51-25	91-43-05	41.510
合計				倍面積 面積	1149.684367 574.84	-1149.684367 574.84			111.028

面積 (座標法) 計算書

地番 = 44-12
測点名

	[1] X (i)	[2] X (i+1)-X (i-1)	[3] Y (i)	[4] Y (i+1)-Y (i-1)	[2] * [3]	[1] * [4]	方向角	夾角	距離
44-35K	-149837.269	17.797	-41245.094	-3.191	-734038.937918	478130.725379	264-18-49	85-30-53	2.826
44-100S	-149837.549	-1.172	-41247.906	-11.975	48342.545832	1794304.649275	264-26-24	180-07-35	9.206
44-36K	-149838.441	-18.010	-41257.069	-7.488	743039.812690	1121990.246208	174-24-41	89-58-17	17.200
44-37K	-149855.559	-16.905	-41255.394	12.354	697422.435570	-1851315.575886	88-51-26	94-26-45	10.681
44-38K	-149855.346	18.290	-41244.715	10.300	-754365.837350	-1543510.063800	358-47-56	89-56-30	18.081
合計				倍面積 面積	400.018824 200.00	-400.018824 200.00			57.994

面積 (座標法) 計算書

地番 = 44-13
測点名

	[1] X (i)	[2] X (i+1)-X (i-1)	[3] Y (i)	[4] Y (i+1)-Y (i-1)	[2] * [3]	[1] * [4]	方向角	夾角	距離
44-38K	-149855.346	-17.787	-41244.715	14.916	733619.745705	-2235242.340936	88-51-26	90-03-30	14.540
44-24	-149855.056	5.987	-41230.178	14.441	-246845.075686	-2164056.863696	359-02-05	90-10-39	5.698
44-110	-149849.359	10.503	-41230.274	-0.221	-433041.567822	33116.708339	358-30-36	179-28-31	4.808
44-109	-149844.553	13.538	-41230.399	-0.307	-558177.141662	46002.277771	358-48-21	180-17-45	8.734
44-13	-149835.821	7.284	-41230.581	-14.695	-300323.552004	2201837.389595	264-18-08	85-29-47	14.585
44-35K	-149837.269	-19.525	-41245.094	-14.134	805310.460350	2117799.960046	178-47-56	94-29-48	18.081
合計				倍面積 面積	542.868881 271.43	-542.868881 271.43			66.446