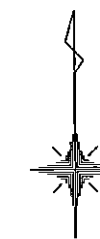
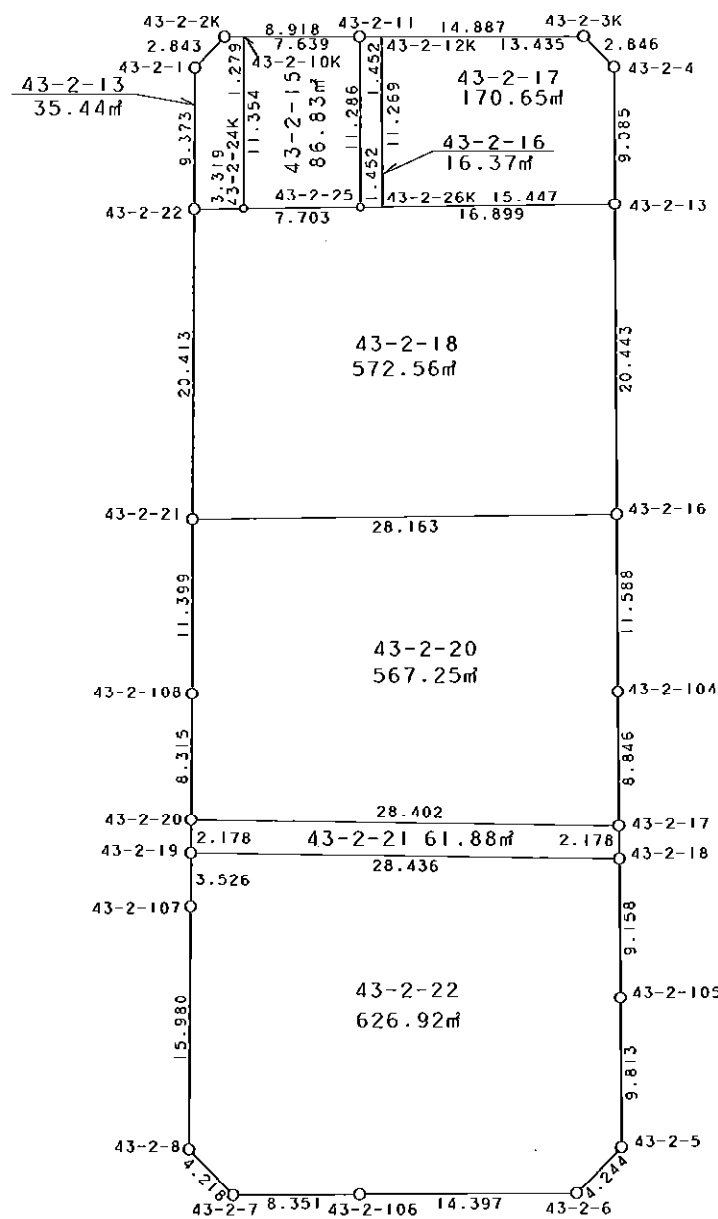


43-2街区



S = 1 / 500



凡 例

記号	名称
⊙	地区界点
○	街区点
○	画地点 (折れ点)
┆	画地点 (直線中)

面積 (座標法) 計算書

地番 = 43-2街区
測点名

	[1] X (i)	[2] X (i+1)-X (i-1)	[3] Y (i)	[4] Y (i+1)-Y (i-1)	[2] * [3]	[1] * [4]	方向角	夾 角	距 離
43-2-2K	-149903.552	-1.924	-41305.334	-10.932	79471.462616	1638745.630464	225-05-59	134-33-59	2.843
43-2-1	-149905.559	-11.379	-41307.348	-2.134	470036.312892	319898.462906	180-44-01	135-38-02	9.373
43-2-22	-149914.931	-29.783	-41307.468	-0.394	1230260.319444	59066.482814	180-46-09	180-02-08	20.413
43-2-21	-149935.342	-31.809	-41307.742	-0.396	1313957.965278	59374.395432	180-36-48	179-50-39	11.399
43-2-108	-149946.740	-19.712	-41307.864	-0.256	814260.615168	38386.365440	180-55-24	180-18-36	8.315
43-2-20	-149955.054	-10.492	-41307.998	-0.164	433403.515016	24592.628856	180-47-21	179-51-57	2.178
43-2-19	-149957.232	-5.704	-41308.028	-0.080	235620.991712	11996.578560	180-48-45	180-01-24	3.526
43-2-107	-149960.758	-19.504	-41308.078	-0.293	805672.753312	43938.502094	180-52-17	180-03-32	15.980
43-2-8	-149976.736	-18.996	-41308.321	2.704	784692.865716	-405537.094144	135-40-55	134-48-38	4.218
43-2-7	-149979.754	-3.052	-41305.374	11.298	126064.001448	-1694471.260692	90-14-00	134-33-05	8.351
43-2-106	-149979.788	-0.108	-41297.023	22.748	4460.078484	-3411740.217424	90-17-40	180-03-40	14.397
43-2-6	-149979.862	2.910	-41282.626	17.415	-120132.441660	-2611899.296730	45-19-28	135-01-48	4.244
43-2-5	-149976.878	12.797	-41279.608	3.034	-528255.143576	-455029.847852	0-05-36	134-46-08	9.813
43-2-105	-149967.065	18.971	-41279.592	0.008	-783115.139832	-1199.736520	359-57-00	179-51-24	9.158
43-2-18	-149957.907	11.336	-41279.600	-0.012	-467945.545600	1799.494884	359-53-41	179-56-41	2.178
43-2-17	-149955.729	11.024	-41279.604	-0.010	-455066.354496	1499.557290	359-57-40	180-03-59	8.846
43-2-104	-149946.883	20.434	-41279.610	0.025	-843507.550740	-3748.672075	0-09-12	180-11-32	11.588
43-2-16	-149935.295	32.031	-41279.579	0.063	-1322226.194949	-9445.923585	0-05-23	179-56-11	20.443
43-2-13	-149914.852	29.528	-41279.547	0.058	-1218902.463816	-8695.061416	0-09-50	180-04-27	9.085
43-2-4	-149905.767	11.102	-41279.521	-1.982	-458285.242142	297113.230194	315-07-41	134-57-51	2.846
43-2-3K	-149903.750	2.132	-41281.529	-16.895	-88012.219828	2532623.856250	270-26-33	135-18-52	14.887
43-2-11	-149903.635	0.198	-41296.416	-23.805	-8176.690368	3568456.031175	270-32-00	180-05-27	8.918
合計				倍面積 面積	4275.894079 2137.94	-4275.894079 2137.94			202.999

地番	筆種別	面積	坪数
43-2-13	筆界	35.44	10.72
43-2-15	筆界	86.83	26.26
43-2-16	筆界	16.37	4.95
43-2-17	筆界	170.65	51.62
43-2-18	筆界	572.56	173.20
43-2-20	筆界	567.25	171.59
43-2-21	筆界	61.88	18.72
43-2-22	筆界	626.92	189.64
	筆合計	2137.90	646.70

面積 (座標法) 計算書

地番 = 43-2-13

測点名	[1] X (i)	[2] X (i+1)-X (i-1)	[3] Y (i)	[4] Y (i+1)-Y (i-1)	[2] * [3]	[1] * [4]	方向角	夾角	距離
43-2-10K	-149903.564	11.366	-41304.055	-1.185	-469461.889130	177635.723340	270-32-15	90-03-47	1.279
43-2-2K	-149903.552	-1.995	-41305.334	-3.293	82404.141330	493632.396736	225-05-59	134-33-44	2.843
43-2-1	-149905.559	-11.379	-41307.348	-2.134	470036.312892	319898.462906	180-44-01	135-38-02	9.373
43-2-22	-149914.931	-9.359	-41307.468	3.199	386596.593012	-479577.864269	89-46-32	89-02-31	3.319
43-2-24K	-149914.918	11.367	-41304.149	3.413	-469504.261683	-511659.615134	0-28-28	90-41-56	11.354
合計				倍面積 面積	70.896421 35.44	-70.896421 35.44			28.168

面積 (座標法) 計算書

地番 = 43-2-15

測点名	[1] X (i)	[2] X (i+1)-X (i-1)	[3] Y (i)	[4] Y (i+1)-Y (i-1)	[2] * [3]	[1] * [4]	方向角	夾角	距離
43-2-24K	-149914.918	-11.357	-41304.149	7.609	469091.220193	-1140702.611062	90-01-20	89-32-52	7.703
43-2-25	-149914.921	11.283	-41296.446	7.733	-465947.800218	-1159292.084093	0-09-08	90-07-48	11.286
43-2-11	-149903.635	11.357	-41296.416	-7.609	-469003.396512	1140616.758715	270-31-57	90-22-49	7.639
43-2-10K	-149903.564	-11.283	-41304.055	-7.733	466033.652565	1159204.260412	180-28-28	89-56-31	11.354
合計				倍面積 面積	173.676028 86.83	-173.676028 86.83			37.982

面積 (座標法) 計算書

地番 = 43-2-16

測点名	[1] X (i)	[2] X (i+1)-X (i-1)	[3] Y (i)	[4] Y (i+1)-Y (i-1)	[2] * [3]	[1] * [4]	方向角	夾角	距離
43-2-12K	-149903.646	11.280	-41294.964	-1.422	-465807.193920	213162.984612	270-26-03	90-16-54	1.452
43-2-11	-149903.635	-11.275	-41296.416	-1.482	465617.090400	222157.187070	180-09-08	89-43-05	11.286
43-2-25	-149914.921	-11.280	-41296.446	1.422	465823.910880	-213179.017662	89-45-48	89-36-40	1.452
43-2-26K	-149914.915	11.275	-41294.994	1.482	-465601.057350	-222173.904030	0-09-09	90-23-21	11.269
合計				倍面積 面積	32.750010 16.37	-32.750010 16.37			25.459

面積 (座標法) 計算書

地番 = 43-2-17

測点名	[1] X (i)	[2] X (i+1)-X (i-1)	[3] Y (i)	[4] Y (i+1)-Y (i-1)	[2] * [3]	[1] * [4]	方向角	夾角	距離
43-2-26K	-149914.915	-11.206	-41294.994	15.417	462751.702764	-2311238.244555	89-45-59	89-36-50	15.447
43-2-13	-149914.852	9.148	-41279.547	15.473	-377625.295956	-2319632.504996	0-09-50	90-23-51	9.085
43-2-4	-149905.767	11.102	-41279.521	-1.982	-458285.242142	297113.230194	315-07-41	134-57-51	2.846
43-2-3K	-149903.750	2.121	-41281.529	-15.443	-87558.123009	2314963.611250	270-26-37	135-18-56	13.435
43-2-12K	-149903.646	-11.165	-41294.964	-13.465	461058.273060	2018452.593390	180-09-09	89-42-32	11.269
合計				倍面積 面積	341.314717 170.65	-341.314717 170.65			52.082

面積 (座標法) 計算書

地番 = 43-2-18

測点名	[1] X (i)	[2] X (i+1)-X (i-1)	[3] Y (i)	[4] Y (i+1)-Y (i-1)	[2] * [3]	[1] * [4]	方向角	夾角	距離
43-2-22	-149914.931	-20.424	-41307.468	-3.593	843663.726432	538644.347083	180-46-09	90-59-37	20.413
43-2-21	-149935.342	-20.364	-41307.742	27.889	841190.858088	-4181546.753038	89-54-16	89-08-07	28.163
43-2-16	-149935.295	20.490	-41279.579	28.195	-845818.573710	-4227425.642525	0-05-23	90-11-07	20.443
43-2-13	-149914.852	20.374	-41279.547	-16.867	-841029.490578	2528613.808684	269-45-58	89-40-35	16.899
43-2-25	-149914.921	-0.066	-41296.446	-24.602	2725.565436	3688206.886442	270-01-20	180-15-22	7.703
43-2-24K	-149914.918	-0.010	-41304.149	-11.022	413.041490	1652362.226196	269-46-32	179-45-12	3.319
合計				倍面積 面積	1145.127158 572.56	-1145.127158 572.56			96.940

面積 (座標法) 計算書

地番 = 43-2-20

測点名	[1] X (i)	[2] X (i+1)-X (i-1)	[3] Y (i)	[4] Y (i+1)-Y (i-1)	[2] * [3]	[1] * [4]	方向角	夾角	距離
43-2-21	-149935.342	-11.445	-41307.742	-28.285	472767.107190	4240921.148470	180-36-48	90-42-32	11.399
43-2-108	-149946.740	-19.712	-41307.864	-0.256	814260.615168	38386.365440	180-55-24	180-18-36	8.315
43-2-20	-149955.054	-8.989	-41307.998	28.260	371317.594022	-4237729.826040	91-21-43	90-26-19	28.402
43-2-17	-149955.729	8.171	-41279.604	28.388	-337295.644284	-4256943.234852	359-57-40	88-35-57	8.846
43-2-104	-149946.883	20.434	-41279.610	0.025	-843507.550740	-3748.672075	0-09-12	180-11-32	11.588
43-2-16	-149935.295	11.541	-41279.579	-28.132	-476407.621239	4217979.718940	269-54-16	89-45-04	28.163
合計				倍面積 面積	1134.500117 567.25	-1134.500117 567.25			96.713

面積 (座標法) 計算書

地番 = 43-2-21

測点名	[1] X (i)	[2] X (i+1)-X (i-1)	[3] Y (i)	[4] Y (i+1)-Y (i-1)	[2] * [3]	[1] * [4]	方向角	夾角	距離
43-2-20	-149955.054	-1.503	-41307.998	-28.424	62085.920994	4262322.454896	180-47-21	89-25-38	2.178
43-2-19	-149957.232	-2.853	-41308.028	28.398	117851.803884	-4258485.474336	91-21-37	90-34-16	28.436
43-2-18	-149957.907	1.503	-41279.600	28.424	-62043.238800	-4262403.548568	359-53-41	88-32-04	2.178
43-2-17	-149955.729	2.853	-41279.604	-28.398	-117770.710212	4258442.792142	271-21-43	91-28-02	28.402
合計				倍面積 面積	123.775866 61.88	-123.775866 61.88			61.194

面積 (座標法) 計算書

地番 = 43-2-22

測点名	[1] X (i)	[2] X (i+1) - X (i-1)	[3] Y (i)	[4] Y (i+1) - Y (i-1)	[2] * [3]	[1] * [4]	方向角	夾角	距離
43-2-18	-149957.907	9.833	-41279.600	-28.436	-405902.306800	4264203.043452	271-21-37	91-24-37	28.436
43-2-19	-149957.232	-2.851	-41308.028	-28.478	117769.187828	4270482.052896	180-48-45	89-27-08	3.526
43-2-107	-149960.758	-19.504	-41308.078	-0.293	805672.753312	43938.502094	180-52-17	180-03-32	15.980
43-2-8	-149976.736	-18.996	-41308.321	2.704	784692.865716	-405537.094144	135-40-55	134-48-38	4.218
43-2-7	-149979.754	-3.052	-41305.374	11.298	126064.001448	-1694471.260692	90-14-00	134-33-05	8.351
43-2-106	-149979.788	-0.108	-41297.023	22.748	4460.078484	-3411740.217424	90-17-40	180-03-40	14.397
43-2-6	-149979.862	2.910	-41282.626	17.415	-120132.441660	-2611899.296730	45-19-28	135-01-48	4.244
43-2-5	-149976.878	12.797	-41279.608	3.034	-528255.143576	-455029.847852	0-05-36	134-46-08	9.813
43-2-105	-149967.065	18.971	-41279.592	0.008	-783115.139832	-1199.736520	359-57-00	179-51-24	9.158
合計				倍面積 面積	1253.854920 626.92	-1253.854920 626.92			98.123