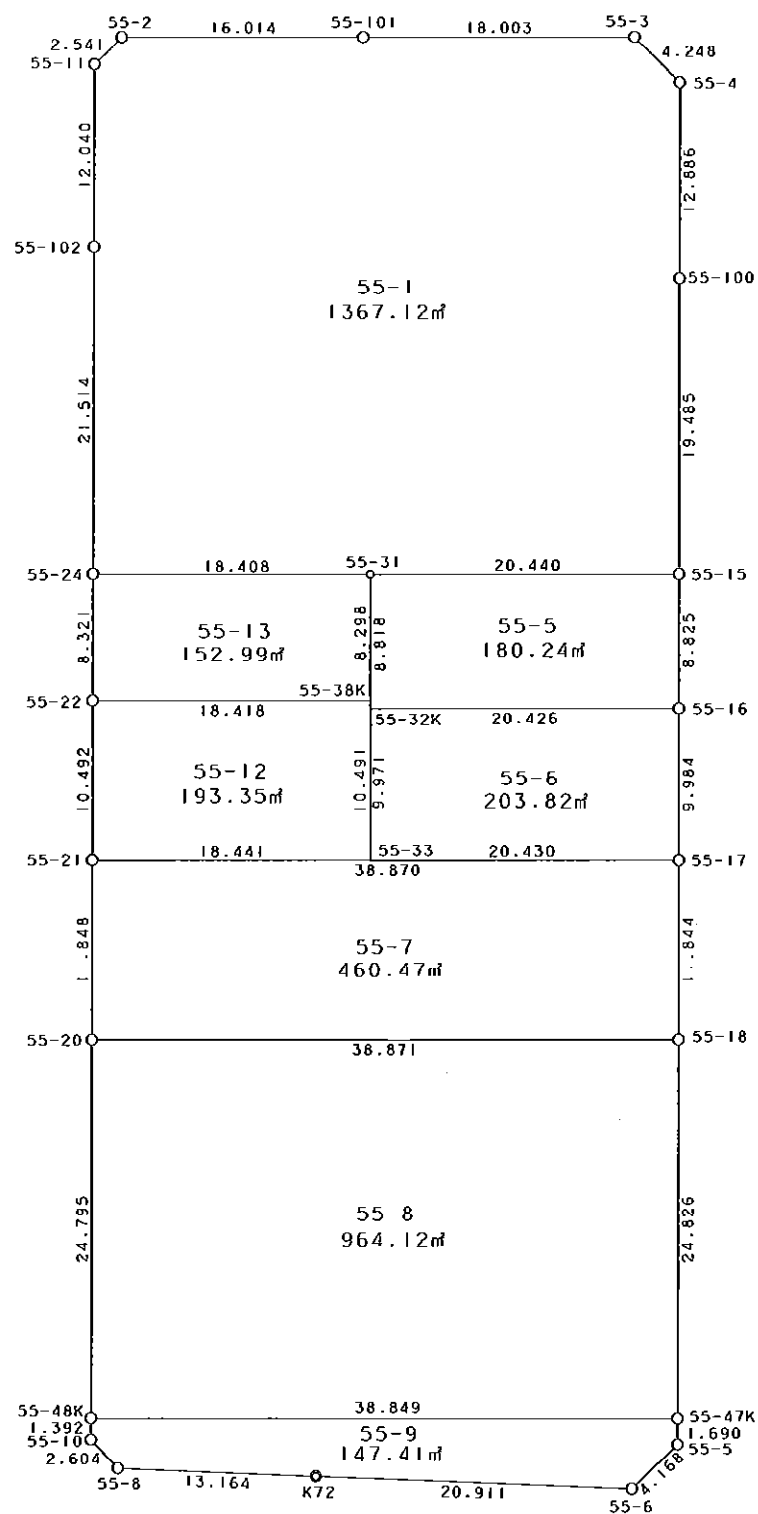


西部第4地区土地区画整理事業 出来形確認測量 (原子図)

55街区



S = 1 / 500



凡 例

記号	名称
⊙	地区界点
○	街区点
○	画地点(折れ点)
┆	画地点(直線中)

面積 (座標法) 計算書

地番 = 55街区

測点名	[1] X (i)	[2] X (i+1)-X (i-1)	[3] Y (i)	[4] Y (i+1)-Y (i-1)	[2] * [3]	[1] * [4]	方向角	夾角	距離
55-2	-149983.589	-2.141	-41158.901	-17.785	88121.207041	2667458.130365	224-16-57	135-26-05	2.541
55-11	-149985.408	-13.857	-41160.675	-1.533	570363.473475	229927.630464	178-51-11	134-34-14	12.040
55-102	-149997.446	-33.548	-41160.434	0.647	1380850.239832	-97048.347562	178-55-07	180-03-56	21.514
55-24	-150018.956	-29.829	-41160.028	0.572	1227762.475212	-85810.842832	178-51-25	179-56-18	8.321
55-22	-150027.275	-18.809	-41159.862	0.364	774175.844358	-54609.928100	178-55-07	180-03-42	10.492
55-21	-150037.765	-22.336	-41159.664	0.430	919342.255104	-64516.238950	178-52-41	179-57-34	11.848
55-20	-150049.611	-36.636	-41159.432	0.715	1507916.950752	-107285.471865	178-53-02	180-00-21	24.795
55-48K	-150074.401	-26.182	-41158.949	0.510	1077623.602718	-76537.944510	178-53-20	180-00-18	1.392
55-10	-150075.793	-3.242	-41158.922	1.859	133437.225124	-278990.899187	135-16-48	136-23-28	2.604
55-8	-150077.643	-2.107	-41157.090	14.993	86717.988630	-2250114.101499	91-07-07	135-50-19	13.164
K72	-150077.900	-0.660	-41143.929	34.068	27154.993140	-5112853.897200	91-06-15	179-59-08	20.911
55-6	-150078.303	2.544	-41123.022	23.854	-104616.967968	-3579967.839762	45-00-00	133-53-45	4.168
55-5	-150075.356	4.637	-41120.075	2.915	-190673.787775	-437469.662740	358-54-55	133-54-55	1.690
55-47K	-150073.666	26.512	-41120.107	-0.494	-1090176.276784	74136.391004	358-56-01	180-01-06	24.826
55-18	-150048.844	36.664	-41120.569	-0.694	-1507644.541816	104133.897736	358-52-40	179-56-39	11.844
55-17	-150037.002	21.824	-41120.801	-0.446	-897420.361024	66916.502892	358-46-19	179-53-39	9.984
55-16	-150027.020	18.805	-41121.015	-0.386	-773280.687075	57910.429720	358-52-59	180-06-40	8.825
55-15	-150018.197	28.304	-41121.187	-0.565	-1163894.076848	84760.281305	358-50-39	179-57-40	19.485
55-100	-149998.716	32.365	-41121.580	-0.643	-1330899.936700	96449.174388	358-53-18	180-02-39	12.886
55-4	-149985.832	15.829	-41121.830	-3.311	-650917.447070	496603.089752	313-53-37	135-00-19	4.248
55-3	-149982.887	2.565	-41124.891	-21.060	-105485.345415	3158639.600220	268-47-26	134-53-49	18.003
55-101	-149983.267	-0.702	-41142.890	-34.010	28882.308780	5100930.910670	268-50-52	180-03-26	16.014
合計				倍面積 面積	7339.135691 3669.56	-7339.135691 3669.56			261.595

地番	筆種別	面積	坪数
55-1	筆界	1367.12	413.55
55-5	筆界	180.24	54.52
55-6	筆界	203.82	61.65
55-7	筆界	460.47	139.29
55-8	筆界	964.12	291.64
55-9	筆界	147.41	44.59
55-12	筆界	193.35	58.48
55-13	筆界	152.99	46.28
	筆合	3669.52	1110.00

面積 (座標法) 計算書

地番 = 55-1
測点名

	[1] X (i)	[2] X (i+1)-X (i-1)	[3] Y (i)	[4] Y (i+1)-Y (i-1)	[2]*[3]	[1]*[4]	方向角	夾角	距離
55-2	-149983.589	-2.141	-41158.901	-17.785	88121.207041	2667458.130365	224-16-57	135-26-05	2.541
55-11	-149985.408	-13.857	-41160.675	-1.533	570363.473475	229927.630464	178-51-11	134-34-14	12.040
55-102	-149997.446	-33.548	-41160.434	0.647	1380850.239832	-97048.347562	178-55-07	180-03-56	21.514
55-24	-150018.956	-21.172	-41160.028	18.811	871440.112816	-2822006.581316	88-56-52	90-01-45	18.408
55-31	-150018.618	0.759	-41141.623	38.841	-31226.491857	-5826873.141738	88-49-11	179-52-19	20.440
55-15	-150018.197	19.902	-41121.187	20.043	-818393.863674	-3006814.722471	358-50-39	90-01-28	19.485
55-100	-149998.716	32.365	-41121.580	-0.643	-1330899.936700	96449.174388	358-53-18	180-02-39	12.886
55-4	-149985.832	15.829	-41121.830	-3.311	-650917.447070	496603.089752	313-53-37	135-00-19	4.248
55-3	-149982.887	2.565	-41124.891	-21.060	-105485.345415	3158639.600220	268-47-26	134-53-49	18.003
55-101	-149983.267	-0.702	-41142.890	-34.010	28882.308780	5100930.910670	268-50-52	180-03-26	16.014
合計				倍面積 面積	2734.257228 1367.12	-2734.257228 1367.12			145.579

面積 (座標法) 計算書

地番 = 55-5
測点名

	[1] X (i)	[2] X (i+1)-X (i-1)	[3] Y (i)	[4] Y (i+1)-Y (i-1)	[2]*[3]	[1]*[4]	方向角	夾角	距離
55-16	-150027.020	9.237	-41121.015	20.250	-379834.815555	-3038047.155000	358-52-59	90-02-40	8.825
55-15	-150018.197	8.402	-41121.187	-20.608	-345500.213174	3091575.003776	268-49-11	89-56-12	20.440
55-31	-150018.618	-9.237	-41141.623	-20.250	380025.171651	3037877.014500	178-47-29	89-58-18	8.818
55-32K	-150027.434	-8.402	-41141.437	20.608	345670.353674	-3091765.359872	88-50-19	90-02-50	20.426
合計				倍面積 面積	360.496596 180.24	-360.496596 180.24			58.509

面積 (座標法) 計算書

地番 = 55-6
測点名

	[1] X (i)	[2] X (i+1)-X (i-1)	[3] Y (i)	[4] Y (i+1)-Y (i-1)	[2]*[3]	[1]*[4]	方向角	夾角	距離
55-16	-150027.020	9.568	-41121.015	-20.636	-393445.871520	3095957.584720	268-50-19	90-04-00	20.426
55-32K	-150027.434	-10.383	-41141.437	-20.212	427171.540371	3032354.496008	178-47-36	89-57-17	9.971
55-33	-150037.403	-9.568	-41141.227	20.636	393639.259936	-3096171.848308	88-52-31	90-04-55	20.430
55-17	-150037.002	10.383	-41120.801	20.212	-426957.276783	-3032547.884424	358-46-19	89-53-48	9.984
合計				倍面積 面積	407.652004 203.82	-407.652004 203.82			60.811

面積 (座標法) 計算書

地番 = 55-7
測点名

	[1] X (i)	[2] X (i+1)-X (i-1)	[3] Y (i)	[4] Y (i+1)-Y (i-1)	[2]*[3]	[1]*[4]	方向角	夾角	距離
55-21	-150037.765	-12.609	-41159.664	-38.631	518982.203376	5796108.899715	178-52-41	90-00-10	11.848
55-20	-150049.611	-11.079	-41159.432	39.095	456005.347128	-5866189.542045	88-52-10	89-59-29	38.871
55-18	-150048.844	12.609	-41120.569	38.631	-518489.254521	-5796536.892564	358-52-40	90-00-30	11.844
55-17	-150037.002	11.079	-41120.801	-39.095	-455577.354279	5865696.593190	268-52-31	89-59-51	38.870
合計				倍面積 面積	920.941704 460.47	-920.941704 460.47			101.433

面積 (座標法) 計算書

地番 = 55-8

測点名	[1] X (i)	[2] X (i+1)-X (i-1)	[3] Y (i)	[4] Y (i+1)-Y (i-1)	[2] * [3]	[1] * [4]	方向角	夾 角	距 離
55-20	-150049.611	-25.557	-41159.432	-38.380	1051911.603624	5758904.070180	178-53-02	90-00-52	24.795
55-48K	-150074.401	-24.055	-41158.949	39.325	990078.518195	-5901675.819325	88-54-57	90-01-55	38.849
55-47K	-150073.666	25.557	-41120.107	38.380	-1050906.574599	-5759827.301080	358-56-01	90-01-04	24.826
55-18	-150048.844	24.055	-41120.569	-39.325	-989155.287295	5900670.790300	268-52-10	89-56-09	38.871
合計				倍面積 面積	1928.259925 964.12	-1928.259925 964.12			127.341

面積 (座標法) 計算書

地番 = 55-9

測点名	[1] X (i)	[2] X (i+1)-X (i-1)	[3] Y (i)	[4] Y (i+1)-Y (i-1)	[2] * [3]	[1] * [4]	方向角	夾 角	距 離
55-48K	-150074.401	-2.127	-41158.949	-38.815	87545.084523	5825137.874815	178-53-20	89-58-23	1.392
55-10	-150075.793	-3.242	-41158.922	1.859	133437.225124	-278990.899187	135-16-48	136-23-28	2.604
55-8	-150077.643	-2.107	-41157.090	14.993	86717.988630	-2250114.101499	91-07-07	135-50-19	13.164
K72	-150077.900	-0.660	-41143.929	34.068	27154.993140	-5112853.897200	91-06-15	179-59-08	20.911
55-6	-150078.303	2.544	-41123.022	23.854	-104616.967968	-3579967.839762	45-00-00	133-53-45	4.168
55-5	-150075.356	4.637	-41120.075	2.915	-190673.787775	-437469.662740	358-54-55	133-54-55	1.690
55-47K	-150073.666	0.955	-41120.107	-38.874	-39269.702185	5833963.692084	268-54-57	90-00-02	38.849
合計				倍面積 面積	294.833489 147.41	-294.833489 147.41			82.778

面積 (座標法) 計算書

地番 = 55-12

測点名	[1] X (i)	[2] X (i+1)-X (i-1)	[3] Y (i)	[4] Y (i+1)-Y (i-1)	[2] * [3]	[1] * [4]	方向角	夾 角	距 離
55-22	-150027.275	-10.851	-41159.862	-18.216	446625.662562	2732896.841400	178-55-07	90-02-30	10.492
55-21	-150037.765	-10.128	-41159.664	18.635	416865.076992	-2795953.750775	88-52-31	89-57-24	18.441
55-33	-150037.403	10.851	-41141.227	18.216	-446423.454177	-2733081.333048	358-47-35	89-55-04	10.491
55-38K	-150026.914	10.128	-41141.448	-18.635	-416680.585344	2795751.542390	268-52-37	90-05-02	18.418
合計				倍面積 面積	386.700033 193.35	-386.700033 193.35			57.842

面積 (座標法) 計算書

地番 = 55-13

測点名	[1] X (i)	[2] X (i+1)-X (i-1)	[3] Y (i)	[4] Y (i+1)-Y (i-1)	[2] * [3]	[1] * [4]	方向角	夾 角	距 離
55-22	-150027.275	-7.958	-41159.862	18.580	327550.181796	-2787506.769500	88-52-37	90-01-12	18.418
55-38K	-150026.914	8.657	-41141.448	18.239	-356161.515336	-2736340.884446	358-47-30	89-54-53	8.298
55-31	-150018.618	7.958	-41141.623	-18.580	-327405.035834	2787345.922440	268-56-52	90-09-22	18.408
55-24	-150018.956	-8.657	-41160.028	-18.239	356322.362396	2736195.738484	178-51-25	89-54-33	8.321
合計				倍面積 面積	305.993022 152.99	-305.993022 152.99			53.445