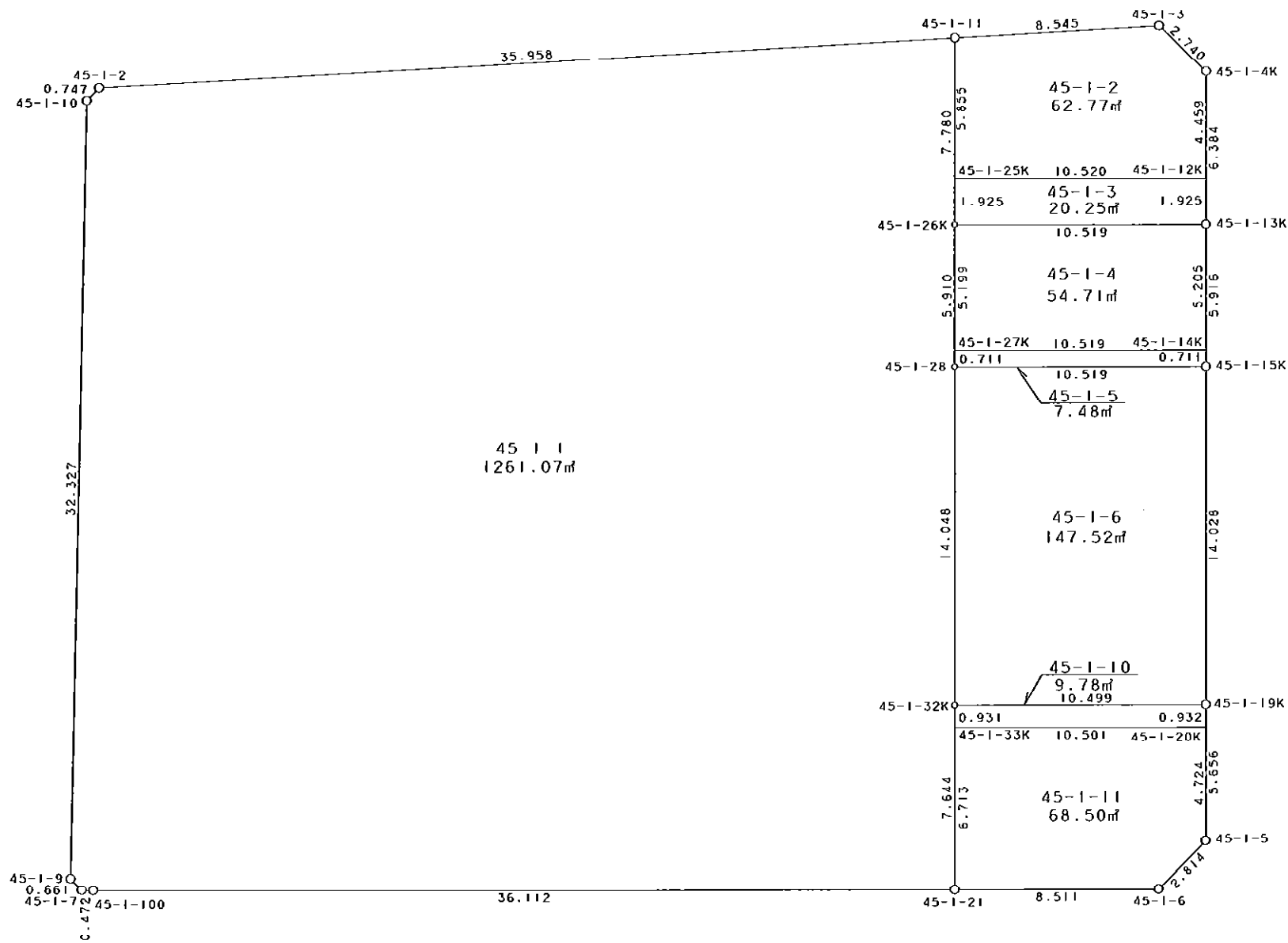


西部第4地区土地区画整理事業 出来形確認測量 (原子図)

45-1街区



S = 1 / 250



凡 例

記号	名称
⊙	地区界点
○	街区点
○	画地点(折れ点)
├	画地点(直線中)

面積 (座標法) 計算書

地番 = 45-1街区

測点名	[1] X (i)	[2] X (i+1)-X (i-1)	[3] Y (i)	[4] Y (i+1)-Y (i-1)	[2]*[3]	[1]*[4]	方向角	夾角	距離
45-1-2	-149905.410	-3.287	-41270.547	-36.360	135656.287989	5450560.707600	222-39-58	137-01-59	0.747
45-1-10	-149905.959	-32.876	-41271.053	-0.507	1356827.138428	76002.321213	180-00-06	137-20-08	32.327
45-1-9	-149938.286	-32.787	-41271.054	0.473	1353154.047498	-70920.809278	134-08-28	134-08-22	0.661
45-1-7	-149938.746	-0.462	-41270.580	0.946	19067.007960	-141842.053716	90-14-34	136-06-06	0.472
45-1-100	-149938.748	0.698	-41270.108	36.577	-28806.535384	-5484309.585596	88-53-21	178-38-47	36.112
45-1-21	-149938.048	0.874	-41234.003	44.614	-36038.518622	-6689336.073472	88-49-43	179-56-22	8.511
45-1-6	-149937.874	2.205	-41225.494	10.457	-90902.214270	-1567900.348418	43-48-18	134-58-35	2.814
45-1-5	-149935.843	7.686	-41223.546	1.845	-316844.174556	-276631.630335	358-57-24	135-09-06	5.656
45-1-19K	-149930.188	19.681	-41223.649	-0.367	-811322.635969	55024.378996	358-55-18	179-57-54	14.028
45-1-15K	-149916.162	19.941	-41223.913	-0.378	-822046.049133	56668.309236	358-53-45	179-58-27	5.916
45-1-13K	-149910.247	12.298	-41224.027	-0.235	-506973.084046	35228.908045	358-54-50	180-01-05	6.384
45-1-4K	-149903.864	8.229	-41224.148	-2.146	-339233.513892	321693.692144	312-21-09	133-26-19	2.740
45-1-3	-149902.018	1.192	-41226.173	-10.545	-49141.598216	1580716.779810	265-36-38	133-15-29	8.545
45-1-11	-149902.672	-3.392	-41234.693	-44.374	139868.078656	6651781.167328	265-37-59	180-01-21	35.958
合計					3264.236443	-3264.236443			160.871
				倍面積 面積	1632.11	1632.11			

地番	筆種別	面積	坪数
45-1-1	筆界	1261.07	381.47
45-1-2	筆界	62.77	18.99
45-1-3	筆界	20.25	6.12
45-1-4	筆界	54.71	16.55
45-1-5	筆界	7.48	2.26
45-1-6	筆界	147.52	44.62
45-1-10	筆界	9.78	2.95
45-1-11	筆界	68.50	20.72
	合計	1632.08	493.68

面積 (座標法) 計算書

地番 = 45-1-1

測点名	[1] X (i)	[2] X (i+1)-X (i-1)	[3] Y (i)	[4] Y (i+1)-Y (i-1)	[2] * [3]	[1] * [4]	方向角	夾角	距離
45-1-2	-149905.410	-3.287	-41270.547	-36.360	135656.287989	5450560.707600	222-39-58	137-01-59	0.747
45-1-10	-149905.959	-32.876	-41271.053	-0.507	1356827.138428	76002.321213	180-00-06	137-20-08	32.327
45-1-9	-149938.286	-32.787	-41271.054	0.473	1353154.047498	-70920.809278	134-08-28	134-08-22	0.661
45-1-7	-149938.746	-0.462	-41270.580	0.946	19067.007960	-141842.053716	90-14-34	136-06-06	0.472
45-1-100	-149938.748	0.698	-41270.108	36.577	-28806.535384	-5484309.585596	88-53-21	178-38-47	36.112
45-1-21	-149938.048	8.343	-41234.003	35.962	-344015.287029	-5392072.082176	358-55-41	90-02-20	7.644
45-1-32K	-149930.405	21.688	-41234.146	-0.427	-894286.158448	64020.282935	358-50-30	179-54-49	14.048
45-1-28	-149916.360	19.954	-41234.430	-0.398	-822791.816220	59666.711280	358-53-41	180-03-11	5.910
45-1-26K	-149910.451	13.688	-41234.544	-0.263	-564418.438272	39426.448613	358-54-10	180-00-29	7.780
45-1-11	-149902.672	5.041	-41234.693	-36.003	-207864.087413	5396945.900016	265-37-59	86-43-49	35.958
合計				倍面積 面積	2522.159109 1261.07	-2522.159109 1261.07			141.659

面積 (座標法) 計算書

地番 = 45-1-2

測点名	[1] X (i)	[2] X (i+1)-X (i-1)	[3] Y (i)	[4] Y (i+1)-Y (i-1)	[2] * [3]	[1] * [4]	方向角	夾角	距離
45-1-12K	-149908.322	4.662	-41224.063	10.433	-192186.581706	-1563993.523426	358-54-28	90-01-08	4.459
45-1-4K	-149903.864	6.304	-41224.148	-2.110	-259877.028992	316297.153040	312-21-09	133-26-41	2.740
45-1-3	-149902.018	1.192	-41226.173	-10.545	-49141.598216	1580716.779810	265-36-38	133-15-29	8.545
45-1-11	-149902.672	-6.508	-41234.693	-8.408	268355.382044	1260381.666176	178-54-14	93-17-36	5.855
45-1-25K	-149908.526	-5.650	-41234.581	10.630	232975.382650	-1593527.631380	88-53-20	89-59-06	10.520
合計				倍面積 面積	125.555780 62.77	-125.555780 62.77			32.119

面積 (座標法) 計算書

地番 = 45-1-3

測点名	[1] X (i)	[2] X (i+1)-X (i-1)	[3] Y (i)	[4] Y (i+1)-Y (i-1)	[2] * [3]	[1] * [4]	方向角	夾角	距離
45-1-25K	-149908.526	-2.129	-41234.581	-10.481	87788.422949	1571191.261006	178-53-56	90-00-36	1.925
45-1-26K	-149910.451	-1.721	-41234.544	10.554	70964.650224	-1582154.899854	88-53-20	89-59-24	10.519
45-1-13K	-149910.247	2.129	-41224.027	10.481	-87765.953483	-1571209.298807	358-55-43	90-02-23	1.925
45-1-12K	-149908.322	1.721	-41224.063	-10.554	-70946.612423	1582132.430388	268-53-20	89-57-37	10.520
合計				倍面積 面積	40.507267 20.25	-40.507267 20.25			24.889

面積 (座標法) 計算書

地番 = 45-1-4

測点名	[1] X (i)	[2] X (i+1)-X (i-1)	[3] Y (i)	[4] Y (i+1)-Y (i-1)	[2] * [3]	[1] * [4]	方向角	夾角	距離
45-1-14K	-149915.451	5.402	-41223.927	10.417	-222691.653654	-1561669.253067	358-53-57	89-58-40	5.205
45-1-13K	-149910.247	5.000	-41224.027	-10.617	-206120.135000	1591597.092399	268-53-20	89-59-23	10.519
45-1-26K	-149910.451	-5.402	-41234.544	-10.417	222749.006688	1561617.168067	178-53-52	90-00-32	5.199
45-1-27K	-149915.649	-5.000	-41234.444	10.617	206172.220000	-1591654.445433	88-55-17	90-01-25	10.519
合計				倍面積 面積	109.438034 54.71	-109.438034 54.71			31.442

面積 (座標法) 計算書

地番 = 45-1-5

測点名	[1] X (i)	[2] X (i+1)-X (i-1)	[3] Y (i)	[4] Y (i+1)-Y (i-1)	[2] * [3]	[1] * [4]	方向角	夾角	距離
45-1-27K	-149915.649	-0.909	-41234.444	-10.503	37482.109596	1574564.061447	178-52-19	89-57-02	0.711
45-1-28	-149916.360	-0.513	-41234.430	10.531	21153.262590	-1578769.187160	88-55-17	90-02-58	10.519
45-1-15K	-149916.162	0.909	-41223.913	10.503	-37472.536917	-1574569.449486	358-52-19	89-57-02	0.711
45-1-14K	-149915.451	0.513	-41223.927	-10.531	-21147.874551	1578759.614481	268-55-17	90-02-58	10.519
合計				倍面積 面積	14.960718 7.48	-14.960718 7.48			22.460

面積 (座標法) 計算書

地番 = 45-1-6

測点名	[1] X (i)	[2] X (i+1)-X (i-1)	[3] Y (i)	[4] Y (i+1)-Y (i-1)	[2] * [3]	[1] * [4]	方向角	夾角	距離
45-1-19K	-149930.188	14.243	-41223.649	10.233	-587148.432707	-1534235.613804	358-55-18	90-06-21	14.028
45-1-15K	-149916.162	13.828	-41223.913	-10.781	-570044.268964	1616246.142522	268-55-17	89-59-59	10.519
45-1-28	-149916.360	-14.243	-41234.430	-10.233	587301.986490	1534094.111880	178-50-30	89-55-13	14.048
45-1-32K	-149930.405	-13.828	-41234.146	10.781	570185.770888	-1616399.696305	88-48-57	89-58-27	10.499
合計				倍面積 面積	295.055707 147.52	-295.055707 147.52			49.094

面積 (座標法) 計算書

地番 = 45-1-10

測点名	[1] X (i)	[2] X (i+1)-X (i-1)	[3] Y (i)	[4] Y (i+1)-Y (i-1)	[2] * [3]	[1] * [4]	方向角	夾角	距離
45-1-20K	-149931.120	1.148	-41223.630	10.480	-47324.727240	-1571278.137600	358-49-56	90-00-39	0.932
45-1-19K	-149930.188	0.715	-41223.649	-10.516	-29474.909035	1576665.857008	268-48-57	89-59-01	10.499
45-1-32K	-149930.405	-1.148	-41234.146	-10.480	47336.799608	1571270.644400	178-57-14	90-08-17	0.931
45-1-33K	-149931.336	-0.715	-41234.129	10.516	29482.402235	-1576677.929376	88-49-17	89-52-03	10.501
合計				倍面積 面積	19.565568 9.78	-19.565568 9.78			22.863

面積 (座標法) 計算書

地番 = 45-1-11

測点名	[1] X (i)	[2] X (i+1) - X (i-1)	[3] Y (i)	[4] Y (i+1) - Y (i-1)	[2] * [3]	[1] * [4]	方向角	夾 角	距 離
45-1-33K	-149931.336	-6.928	-41234.129	-10.373	285670.045712	1555237.748328	178-55-28	90-06-11	6.713
45-1-21	-149938.048	-6.538	-41234.003	8.635	269587.911614	-1294715.044480	88-49-43	89-54-15	8.511
45-1-6	-149937.874	2.205	-41225.494	10.457	-90902.214270	-1567900.348418	43-48-18	134-58-35	2.814
45-1-5	-149935.843	6.754	-41223.546	1.864	-278423.829684	-279480.411352	358-58-52	135-10-34	4.724
45-1-20K	-149931.120	4.507	-41223.630	-10.583	-185794.900410	1586721.042960	268-49-17	89-50-25	10.501
合計					137.012962	-137.012962			33.263
				倍面積 面積	68.50	68.50			