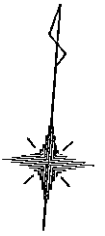
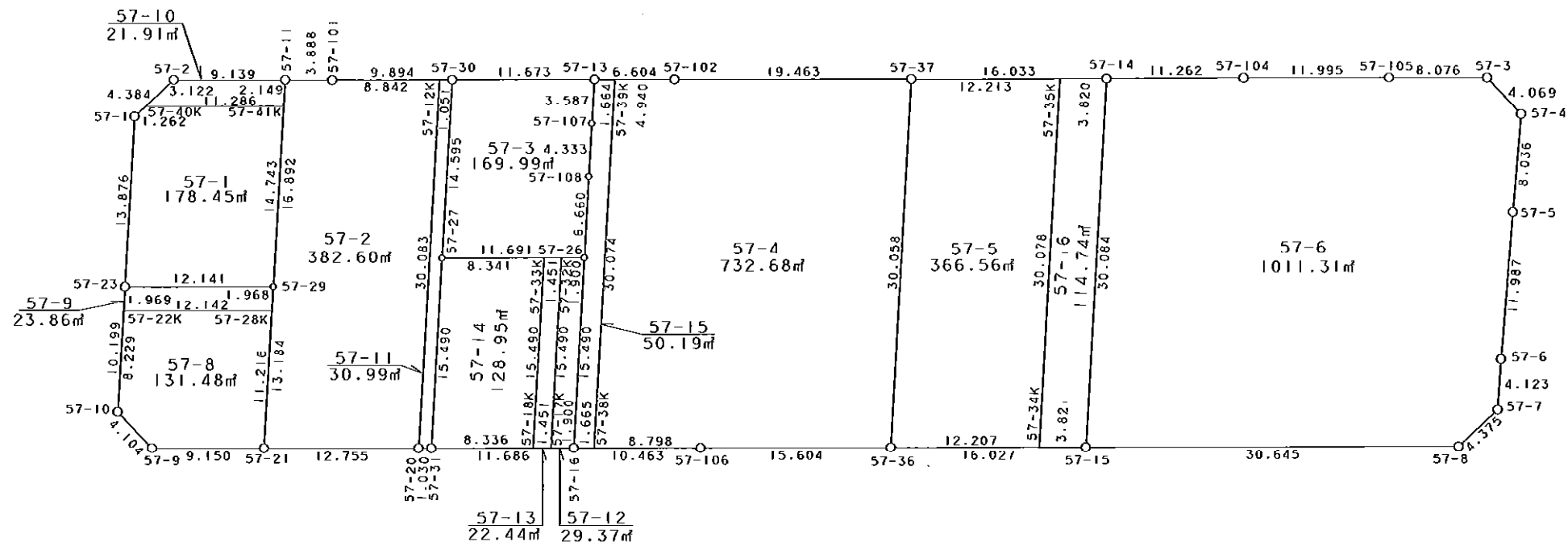


西部第4地区土地区画整理事業 出来形確認測量（原子図）

57街区



S = 1 / 500



凡 例

記号	名称
⊙	地区界点
○	街区点
○	画地点(折れ点)
┆	画地点(直線中)

面積 (座標法) 計算書

地番 = 57街区

測点名	[1] X (i)	[2] X (i+1)-X (i-1)	[3] Y (i)	[4] Y (i+1)-Y (i-1)	[2]*[3]	[1]*[4]	方向角	夾角	距離
57-2	-149890.001	-3.932	-41068.669	-12.062	161482.006508	1807973.192062	222-16-22	136-35-25	4.384
57-1	-149893.245	-17.117	-41071.618	-2.667	703022.885306	399765.284415	178-50-08	136-33-46	13.876
57-23	-149907.118	-24.070	-41071.336	0.474	988587.057520	-71055.973932	178-55-17	180-05-09	10.199
57-10	-149917.315	-12.948	-41071.144	3.237	531789.172512	-485282.348655	132-05-46	133-10-29	4.104
57-9	-149920.066	-2.069	-41068.099	12.170	84969.896831	-1824527.203220	85-43-32	133-37-46	9.150
57-21	-149919.384	1.660	-41058.974	21.842	-68157.896840	-3274539.185328	85-36-08	179-52-36	12.755
57-20	-149918.406	1.058	-41046.257	13.744	-43426.939906	-2060478.572064	85-32-45	179-56-37	1.030
57-31	-149918.326	0.976	-41045.230	12.679	-40060.144480	-1900814.455354	85-36-10	180-03-25	11.686
57-16	-149917.430	1.691	-41033.578	22.085	-69387.780398	-3310926.441550	85-38-33	180-02-23	10.463
57-106	-149916.635	1.995	-41023.145	25.991	-81841.174275	-3896483.260285	85-35-22	179-56-49	15.604
57-36	-149915.435	2.393	-41007.587	31.541	-98131.155691	-4728482.735335	85-43-53	180-08-31	16.027
57-15	-149914.242	3.507	-40991.604	46.541	-143757.555228	-6977158.736922	85-40-10	179-56-17	30.645
57-8	-149911.928	5.535	-40961.046	33.518	-226719.389610	-5024748.002704	42-34-55	136-54-45	4.375
57-7	-149908.707	7.344	-40958.086	2.936	-300796.183584	-440131.963752	359-39-59	137-05-04	4.123
57-6	-149904.584	16.110	-40958.110	0.030	-659835.152100	-4497.137520	0-15-29	180-35-30	11.987
57-5	-149892.597	20.023	-40958.056	0.135	-820103.155288	-20235.500595	0-34-39	180-19-10	8.036
57-4	-149884.561	10.807	-40957.975	-2.899	-442632.835825	434515.342339	312-55-07	132-20-28	4.069
57-3	-149881.790	2.184	-40960.955	-11.035	-89458.725720	1653945.552650	265-49-55	132-54-48	8.076
57-105	-149882.377	-1.493	-40969.010	-20.016	61166.731930	3000045.658032	265-40-06	179-50-11	11.995
57-104	-149883.283	-1.787	-40980.971	-23.188	73232.995177	3475493.566204	265-30-47	179-50-41	11.262
57-14	-149884.164	-2.100	-40992.198	-27.214	86083.615800	4078947.639096	265-38-23	180-07-36	16.033
57-37	-149885.383	-2.688	-41008.185	-35.394	110230.001280	5305043.245902	265-40-17	180-01-54	19.463
57-102	-149886.852	-1.983	-41027.592	-25.991	81357.714936	3895709.170332	265-32-10	179-51-53	6.604
57-13	-149887.366	-1.394	-41034.176	-18.224	57201.641344	2731547.357984	265-40-36	180-08-26	11.673
57-30	-149888.246	-1.657	-41045.816	-21.503	68012.917112	3223046.953738	265-29-44	179-49-08	9.894
57-101	-149889.023	-1.067	-41055.679	-13.740	43806.409493	2059475.176020	265-43-20	180-13-36	3.888
57-11	-149889.313	-0.978	-41059.556	-12.990	40156.245768	1947062.175870	265-40-57	179-57-37	9.139
合計				倍面積 面積	6791.202572 3395.60	-6791.202572 3395.60			280.540

地番	筆種別	面積	坪数
57-1	筆界	178.45	53.98
57-2	筆界	382.60	115.73
57-3	筆界	169.99	51.42
57-4	筆界	732.68	221.63
57-5	筆界	366.56	110.88
57-6	筆界	1011.31	305.92
57-8	筆界	131.48	39.77
57-9	筆界	23.86	7.21
57-10	筆界	21.91	6.62
57-11	筆界	30.99	9.37
57-12	筆界	29.37	8.88
57-13	筆界	22.44	6.78
57-14	筆界	128.95	39.00
57-15	筆界	50.19	15.18
57-16	筆界	114.74	34.70
	筆合	3395.52	1027.07

面積 (座標法) 計算書

地番 = 57-1
測点名

	[1] X (i)	[2] X (i+1)-X (i-1)	[3] Y (i)	[4] Y (i+1)-Y (i-1)	[2]*[3]	[1]*[4]	方向角	夾角	距離
57-40K	-149892.311	-1.783	-41070.769	-12.103	73229.181127	1814146.640033	222-16-14	136-35-05	1.262
57-1	-149893.245	-14.807	-41071.618	-0.567	608147.447726	84989.469915	178-50-08	136-33-54	13.876
57-23	-149907.118	-12.957	-41071.336	12.388	532161.300552	-1857049.377784	85-40-23	86-50-15	12.141
57-29	-149906.202	15.656	-41059.230	11.821	-642823.304880	-1772041.213842	358-53-32	93-13-09	14.743
57-41K	-149891.462	13.891	-41059.515	-11.539	-570357.722865	1729597.580018	265-41-09	86-47-37	11.286
合計				倍面積 面積	356.901660 178.45	-356.901660 178.45			53.308

面積 (座標法) 計算書

地番 = 57-2
測点名

	[1] X (i)	[2] X (i+1)-X (i-1)	[3] Y (i)	[4] Y (i+1)-Y (i-1)	[2]*[3]	[1]*[4]	方向角	夾角	距離
57-20	-149918.406	31.055	-41046.257	12.110	-1274691.511135	-1815511.896660	358-50-38	93-14-30	30.083
57-12K	-149888.329	29.383	-41046.864	-9.422	-1206080.004912	1412247.835838	265-29-54	86-39-16	8.842
57-101	-149889.023	-0.984	-41055.679	-12.692	40398.788136	1902391.479916	265-43-20	180-13-26	3.888
57-11	-149889.313	-17.179	-41059.556	-3.551	705362.112524	532256.950463	178-53-39	93-10-19	16.892
57-29	-149906.202	-30.071	-41059.230	0.582	1234692.105330	-87245.409564	178-53-15	179-59-36	13.184
57-21	-149919.384	-12.204	-41058.974	12.973	501083.718696	-1944904.168632	85-36-08	86-42-53	12.755
合計				倍面積 面積	765.208639 382.60	-765.208639 382.60			85.644

面積 (座標法) 計算書

地番 = 57-3
測点名

	[1] X (i)	[2] X (i+1)-X (i-1)	[3] Y (i)	[4] Y (i+1)-Y (i-1)	[2]*[3]	[1]*[4]	方向角	夾角	距離
57-30	-149888.246	-15.473	-41045.816	-11.373	635101.910968	1704679.021758	178-57-07	93-16-31	14.595
57-27	-149902.839	-13.697	-41045.549	11.924	562200.884653	-1787441.452236	85-36-17	86-39-10	11.691
57-26	-149901.943	7.554	-41033.892	11.510	-309970.020168	-1725371.363930	358-44-07	93-07-50	6.660
57-108	-149895.285	10.990	-41034.039	-0.225	-450964.088610	33726.439125	358-58-06	180-13-59	4.333
57-107	-149890.953	7.919	-41034.117	-0.137	-324949.172523	20535.060561	359-03-28	180-05-22	3.587
57-13	-149887.366	2.707	-41034.176	-11.699	-111079.514432	1753532.294834	265-40-36	86-37-08	11.673
合計				倍面積 面積	339.999888 169.99	-339.999888 169.99			52.539

面積 (座標法) 計算書

地番 = 57-4
測点名

	[1] X (i)	[2] X (i+1)-X (i-1)	[3] Y (i)	[4] Y (i+1)-Y (i-1)	[2] * [3]	[1] * [4]	方向角	夾角	距離
57-38K	-149917.304	-29.399	-41031.918	9.372	1206297.357282	-1405024.973088	85-38-21	86-46-50	8.798
57-106	-149916.635	1.869	-41023.145	24.331	-76672.258005	-3647621.646185	85-35-22	179-57-01	15.604
57-36	-149915.435	31.252	-41007.587	14.960	-1281569.108924	-2242734.907600	358-51-36	93-16-14	30.058
57-37	-149885.383	28.583	-41008.185	-20.005	-1172136.951855	2998457.086915	265-40-17	86-48-41	19.463
57-102	-149886.852	-1.853	-41027.592	-24.332	76024.127976	3647046.882864	265-32-30	179-52-13	4.940
57-39K	-149887.236	-30.452	-41032.517	-4.326	1249522.207684	648412.182936	178-51-31	93-19-01	30.074
合計				倍面積 面積	1465.374158 732.68	-1465.374158 732.68			108.937

面積 (座標法) 計算書

地番 = 57-5
測点名

	[1] X (i)	[2] X (i+1)-X (i-1)	[3] Y (i)	[4] Y (i+1)-Y (i-1)	[2] * [3]	[1] * [4]	方向角	夾角	距離
57-35K	-149884.454	29.143	-40996.007	-12.771	-1194746.632001	1914174.362034	265-38-15	86-46-02	12.213
57-37	-149885.383	-30.981	-41008.185	-11.580	1270474.579485	1735672.735140	178-51-36	93-13-21	30.058
57-36	-149915.435	-29.143	-41007.587	12.771	1195084.107941	-1914570.020385	85-43-46	86-52-10	12.207
57-34K	-149914.526	30.981	-40995.414	11.580	-1270078.921134	-1736010.211080	358-52-13	93-08-27	30.078
合計				倍面積 面積	733.134291 366.56	-733.134291 366.56			84.556

面積 (座標法) 計算書

地番 = 57-6
測点名

	[1] X (i)	[2] X (i+1)-X (i-1)	[3] Y (i)	[4] Y (i+1)-Y (i-1)	[2] * [3]	[1] * [4]	方向角	夾角	距離
57-14	-149884.164	-30.959	-40992.198	-10.633	1269077.457882	1593718.315812	178-52-07	93-21-20	30.084
57-15	-149914.242	-27.764	-40991.604	31.152	1138090.893456	-4670128.466784	85-40-10	86-48-03	30.645
57-8	-149911.928	5.535	-40961.046	33.518	-226719.389610	-5024748.002704	42-34-55	136-54-45	4.375
57-7	-149908.707	7.344	-40958.086	2.936	-300796.183584	-440131.963752	359-39-59	137-05-04	4.123
57-6	-149904.584	16.110	-40958.110	0.030	-659835.152100	-4497.137520	0-15-29	180-35-30	11.987
57-5	-149892.597	20.023	-40958.056	0.135	-820103.155288	-20235.500595	0-34-39	180-19-10	8.036
57-4	-149884.561	10.807	-40957.975	-2.899	-442632.835825	434515.342339	312-55-07	132-20-28	4.069
57-3	-149881.790	2.184	-40960.955	-11.035	-89458.725720	1653945.552650	265-49-55	132-54-48	8.076
57-105	-149882.377	-1.493	-40969.010	-20.016	61166.731930	3000045.658032	265-40-06	179-50-11	11.995
57-104	-149883.283	-1.787	-40980.971	-23.188	73232.995177	3475493.566204	265-30-47	179-50-41	11.262
合計				倍面積 面積	2022.636318 1011.31	-2022.636318 1011.31			124.652

面積 (座標法) 計算書

地番 = 57-8
測点名

	[1] X (i)	[2] X (i+1)-X (i-1)	[3] Y (i)	[4] Y (i+1)-Y (i-1)	[2] * [3]	[1] * [4]	方向角	夾 角	距 離
57-22K	-149909.087	-9.145	-41071.299	-11.952	375597.029355	1791713.407824	178-55-15	93-15-08	8.229
57-10	-149917.315	-10.979	-41071.144	3.200	450920.089976	-479735.408000	132-05-46	133-10-31	4.104
57-9	-149920.066	-2.069	-41068.099	12.170	84969.896831	-1824527.203220	85-43-32	133-37-46	9.150
57-21	-149919.384	11.896	-41058.974	8.907	-488437.554704	-1335331.953288	358-53-11	93-09-39	11.216
57-28K	-149908.170	10.297	-41059.192	-12.325	-422786.500024	1847618.195250	265-40-07	86-46-56	12.142
合計				倍面積 面積	262.961434 131.48	-262.961434 131.48			44.841

面積 (座標法) 計算書

地番 = 57-9
測点名

	[1] X (i)	[2] X (i+1)-X (i-1)	[3] Y (i)	[4] Y (i+1)-Y (i-1)	[2] * [3]	[1] * [4]	方向角	夾 角	距 離
57-28K	-149908.170	2.885	-41059.192	12.069	-118455.768920	-1809241.703730	358-53-38	93-13-31	1.968
57-29	-149906.202	1.052	-41059.230	-12.144	-43194.309960	1820460.917088	265-40-23	86-46-45	12.141
57-23	-149907.118	-2.885	-41071.336	-12.069	118490.804360	1809229.007142	178-55-24	93-15-01	1.969
57-22K	-149909.087	-1.052	-41071.299	12.144	43207.006548	-1820495.952528	85-40-07	86-44-43	12.142
合計				倍面積 面積	47.732028 23.86	-47.732028 23.86			28.220

面積 (座標法) 計算書

地番 = 57-10
測点名

	[1] X (i)	[2] X (i+1)-X (i-1)	[3] Y (i)	[4] Y (i+1)-Y (i-1)	[2] * [3]	[1] * [4]	方向角	夾 角	距 離
57-41K	-149891.462	2.998	-41059.515	11.213	-123096.425970	-1680732.963406	358-54-25	93-13-16	2.149
57-11	-149889.313	1.461	-41059.556	-9.154	-59988.011316	1372086.771202	265-40-57	86-46-32	9.139
57-2	-149890.001	-2.998	-41068.669	-11.213	123123.869662	1680716.581213	222-16-25	136-35-28	3.122
57-40K	-149892.311	-1.461	-41070.769	9.154	60004.393509	-1372114.214894	85-41-09	43-24-44	11.286
合計				倍面積 面積	43.825885 21.91	-43.825885 21.91			25.696

面積 (座標法) 計算書

地番 = 57-11
測点名

	[1] X (i)	[2] X (i+1)-X (i-1)	[3] Y (i)	[4] Y (i+1)-Y (i-1)	[2] * [3]	[1] * [4]	方向角	夾 角	距 離
57-20	-149918.406	-29.997	-41046.257	1.634	1231264.571229	-244966.675404	85-32-45	86-42-07	1.030
57-31	-149918.326	15.567	-41045.230	0.708	-638951.095410	-106142.174808	358-49-12	93-16-27	15.490
57-27	-149902.839	30.080	-41045.549	-0.586	-1234650.113920	87843.063654	358-57-07	180-07-55	14.595
57-30	-149888.246	14.510	-41045.816	-1.315	-595574.790160	197103.043490	265-28-18	86-31-11	1.051
57-12K	-149888.329	-30.160	-41046.864	-0.441	1237973.418240	66100.753089	178-50-38	93-22-20	30.083
合計				倍面積 面積	61.989979 30.99	-61.989979 30.99			62.249

面積 (座標法) 計算書

地番 = 57-12

測点名	[1] X (i)	[2] X (i+1)-X (i-1)	[3] Y (i)	[4] Y (i+1)-Y (i-1)	[2] * [3]	[1] * [4]	方向角	夾角	距離
57-17K	-149917.576	-15.341	-41035.472	2.208	629525.175952	-331018.007808	85-35-31	86-45-12	1.900
57-16	-149917.430	15.633	-41033.578	1.580	-641477.924874	-236869.539400	358-50-19	93-14-48	15.490
57-26	-149901.943	15.341	-41033.892	-2.208	-629500.937172	330983.490144	265-35-31	86-45-12	1.900
57-32K	-149902.089	-15.633	-41035.786	-1.580	641512.442538	236845.300620	178-50-19	93-14-48	15.490
合計				倍面積 面積	58.756444 29.37	-58.756444 29.37			34.780

面積 (座標法) 計算書

地番 = 57-13

測点名	[1] X (i)	[2] X (i+1)-X (i-1)	[3] Y (i)	[4] Y (i+1)-Y (i-1)	[2] * [3]	[1] * [4]	方向角	夾角	距離
57-18K	-149917.687	-15.376	-41036.919	1.761	630983.666544	-264005.046807	85-36-48	86-46-29	1.451
57-17K	-149917.576	15.598	-41035.472	1.133	-640071.292256	-169856.613608	358-50-19	93-13-31	15.490
57-32K	-149902.089	15.376	-41035.786	-1.761	-630966.245536	263977.578729	265-36-48	86-46-29	1.451
57-33K	-149902.200	-15.598	-41037.233	-1.133	640098.760334	169839.192600	178-50-19	93-13-31	15.490
合計				倍面積 面積	44.889086 22.44	-44.889086 22.44			33.882

面積 (座標法) 計算書

地番 = 57-14

測点名	[1] X (i)	[2] X (i+1)-X (i-1)	[3] Y (i)	[4] Y (i+1)-Y (i-1)	[2] * [3]	[1] * [4]	方向角	夾角	距離
57-33K	-149902.200	14.848	-41037.233	-8.630	-609320.835584	1293655.986000	265-36-22	86-46-03	8.341
57-27	-149902.839	-16.126	-41045.549	-7.997	661900.523174	1198773.003483	178-49-12	93-12-50	15.490
57-31	-149918.326	-14.848	-41045.230	8.630	609439.575040	-1293795.153380	85-36-12	86-47-00	8.336
57-18K	-149917.687	16.126	-41036.919	7.997	-661761.355794	-1198891.742939	358-50-19	93-14-07	15.490
合計				倍面積 面積	257.906836 128.95	-257.906836 128.95			47.657

面積 (座標法) 計算書

地番 = 57-15

測点名	[1] X (i)	[2] X (i+1)-X (i-1)	[3] Y (i)	[4] Y (i+1)-Y (i-1)	[2] * [3]	[1] * [4]	方向角	夾角	距離
57-39K	-149887.236	29.938	-41032.517	-2.258	-1228431.493946	338445.378888	265-31-10	86-39-39	1.664
57-13	-149887.366	-3.717	-41034.176	-1.600	152524.032192	239819.785600	179-03-28	93-32-18	3.587
57-107	-149890.953	-7.919	-41034.117	0.137	324949.172523	-20535.060561	178-58-06	179-54-38	4.333
57-108	-149895.285	-10.990	-41034.039	0.225	450964.088610	-33726.439125	178-44-07	179-46-01	6.660
57-26	-149901.943	-22.145	-41033.892	0.461	908695.538340	-69104.795723	178-50-19	180-06-12	15.490
57-16	-149917.430	-15.361	-41033.578	1.974	630316.791658	-295937.006820	85-39-34	86-49-15	1.665
57-38K	-149917.304	30.194	-41031.918	1.061	-1238917.732092	-159062.259544	358-51-31	93-11-57	30.074
合計				倍面積 面積	100.397285 50.19	-100.397285 50.19			63.473

面積 (座標法) 計算書

地番 = 57-16
測点名

	[1] X (i)	[2] X (i+1) - X (i-1)	[3] Y (i)	[4] Y (i+1) - Y (i-1)	[2] * [3]	[1] * [4]	方向角	夾角	距離
57-34K	-149914.526	-29.788	-40995.414	4.403	1221171.392232	-660073.657978	85-44-13	86-52-00	3.821
57-15	-149914.242	30.362	-40991.604	3.216	-1244587.080648	-482124.202272	358-52-07	93-07-54	30.084
57-14	-149884.164	29.788	-40992.198	-4.403	-1221075.594024	659939.974092	265-38-46	86-46-39	3.820
57-35K	-149884.454	-30.362	-40996.007	-3.216	1244720.764534	482028.404064	178-52-13	93-13-27	30.078
合計					229.482094	-229.482094			67.803
				倍面積 面積	114.74	114.74			