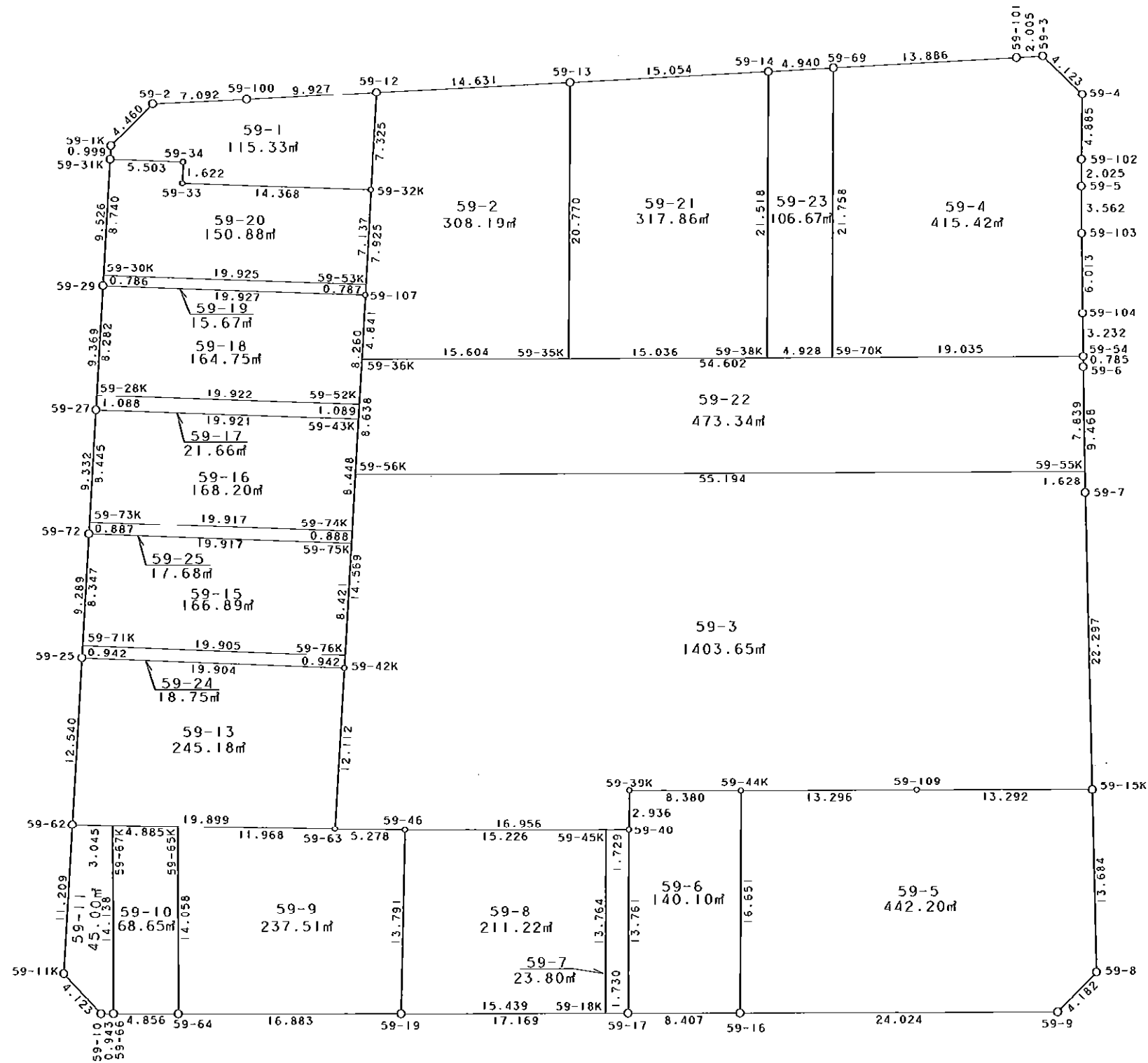


59街区



S = 1 / 400



凡 例

記号	名称
⊙	地区界点
○	街区点
○	画地点 (折れ点)
┆	画地点 (直線中)

面積 (座標法) 計算書

地番 = 59街区

測点名	[1] X (i)	[2] X (i+1)-X (i-1)	[3] Y (i)	[4] Y (i+1)-Y (i-1)	[2] * [3]	[1] * [4]	方向角	夾角	距離
59-2	-149923.028	-3.762	-41028.326	-10.145	154348.562412	1520969.119060	223-32-48	137-49-28	4.460
59-1K	-149926.261	-4.232	-41031.399	-3.099	173644.880568	464621.482839	181-29-27	137-56-39	0.999
59-31K	-149927.260	-10.521	-41031.425	-0.308	431691.622425	46177.596080	181-41-47	180-12-20	9.526
59-29	-149936.782	-18.887	-41031.707	-0.565	774965.850109	84714.281830	181-43-51	180-02-04	9.369
59-27	-149946.147	-18.693	-41031.990	-0.568	767010.989070	85169.411496	181-45-00	180-01-09	9.332
59-72	-149955.475	-18.613	-41032.275	-0.561	763733.734575	84125.021475	181-42-09	179-57-09	9.289
59-25	-149964.760	-21.819	-41032.551	-0.654	895289.230269	98076.953040	181-43-39	180-01-30	12.540
59-62	-149977.294	-23.738	-41032.929	-0.715	974039.668602	107233.765210	181-43-22	179-59-43	11.209
59-11K	-149988.498	-14.125	-41033.266	2.573	579594.882250	-385920.405354	135-06-29	133-23-07	4.123
59-10	-149991.419	-2.899	-41030.356	3.853	118947.002044	-577916.937407	88-39-49	133-33-20	0.943
59-66	-149991.397	0.145	-41029.413	5.797	-5949.264885	-869500.128409	88-32-54	179-53-05	4.856
59-64	-149991.274	0.551	-41024.559	21.732	-22604.532009	-3259610.366568	88-32-51	179-59-57	16.883
59-19	-149990.846	0.865	-41007.681	34.041	-35471.644065	-5105838.388686	88-32-29	179-59-38	17.169
59-17	-149990.409	0.651	-40990.518	25.567	-26684.827218	-3834804.786903	88-32-29	180-00-00	8.407
59-16	-149990.195	0.821	-40982.114	32.420	-33646.315594	-4862682.121900	88-33-08	180-00-39	24.024
59-9	-149989.588	3.655	-40958.098	26.880	-149701.848190	-4031720.125440	43-13-02	134-39-54	4.182
59-8	-149986.540	16.717	-40955.234	2.215	-684648.646778	-332220.186100	357-16-54	134-03-52	13.684
59-15K	-149972.871	35.940	-40955.883	-1.725	-1471954.435020	258703.202475	357-14-02	179-57-08	22.297
59-7	-149950.600	31.731	-40956.959	-1.454	-1299605.266029	218028.172400	357-42-43	180-28-41	9.468
59-6	-149941.140	10.245	-40957.337	-0.389	-419607.917565	58327.103460	359-11-50	181-29-07	0.785
59-54	-149940.355	4.014	-40957.348	-0.143	-164402.794872	21441.470765	357-39-33	178-27-43	3.232
59-104	-149937.126	9.238	-40957.480	-0.352	-378365.200240	52777.868352	357-54-12	180-14-39	6.013
59-103	-149931.117	9.569	-40957.700	-0.333	-391924.231300	49927.061961	358-10-55	180-16-43	3.562
59-5	-149927.557	5.585	-40957.813	-0.157	-228749.385605	23538.626449	358-45-19	180-34-24	2.025
59-102	-149925.532	6.910	-40957.857	-0.103	-283018.791870	15442.329796	359-18-29	180-33-10	4.885
59-4	-149920.647	7.637	-40957.916	-3.129	-312795.604492	469101.704463	311-52-25	132-33-56	4.123
59-3	-149917.895	2.583	-40960.986	-5.068	-105802.226838	759783.891860	265-09-55	133-17-30	2.005
59-101	-149918.064	-1.215	-40962.984	-15.845	49770.025560	2375451.724080	265-40-48	180-30-53	13.886
59-69	-149919.110	-1.418	-40976.831	-18.773	58105.146358	2814431.452030	265-40-53	180-00-05	4.940
59-14	-149919.482	-1.522	-40981.757	-19.936	62374.234154	2988794.793152	265-37-08	179-56-15	15.054
59-13	-149920.632	-2.249	-40996.767	-29.600	92201.728983	4437650.707200	265-41-32	180-04-24	14.631
59-12	-149921.731	-1.867	-41011.357	-24.487	76568.203519	3671133.426997	265-33-46	179-52-14	9.927
59-100	-149922.499	-1.297	-41021.254	-16.969	53204.566438	2544034.885531	265-43-20	180-09-34	7.092
合計				倍面積 面積	10557.394766 5278.69	-10557.394766 5278.69			284.920

地番	筆種別	面積	坪数
59-1	筆界	115.33	34.88
59-2	筆界	308.19	93.22
59-3	筆界	1403.65	424.60
59-4	筆界	415.42	125.66
59-5	筆界	442.20	133.76
59-6	筆界	140.10	42.38
59-7	筆界	23.80	7.20
59-8	筆界	211.22	63.89
59-9	筆界	237.51	71.84
59-10	筆界	68.65	20.76
59-11	筆界	45.00	13.61
59-13	筆界	245.18	74.16
59-15	筆界	166.89	50.48
59-16	筆界	168.20	50.88
59-17	筆界	21.66	6.55
59-18	筆界	164.75	49.83
59-19	筆界	15.67	4.74
59-20	筆界	150.88	45.64
59-21	筆界	317.86	96.15
59-22	筆界	473.34	143.18
59-23	筆界	106.67	32.27
59-24	筆界	18.75	5.67
59-25	筆合	17.68	5.34
		5278.60	1596.69

面積 (座標法) 計算書

地番 = 59-1  
測点名

	[1] X (i)	[2] X (i+1)-X (i-1)	[3] Y (i)	[4] Y (i+1)-Y (i-1)	[2] * [3]	[1] * [4]	方向角	夾角	距離
59-2	-149923.028	-3.762	-41028.326	-10.145	154348.562412	1520969.119060	223-32-48	137-49-28	4.460
59-1K	-149926.261	-4.232	-41031.399	-3.099	173644.880568	464621.482839	181-29-27	137-56-39	0.999
59-31K	-149927.260	-1.044	-41031.425	5.477	42836.807700	-821151.603020	90-28-07	88-58-40	5.503
59-34	-149927.305	-1.667	-41025.922	5.486	68390.211974	-822501.195230	180-36-02	270-07-55	1.622
59-33	-149928.927	-1.748	-41025.939	14.350	71713.341372	-2151480.102450	90-30-09	89-54-07	14.368
59-32K	-149929.053	7.196	-41011.572	14.582	-295119.272112	-2186265.450846	1-40-55	91-10-46	7.325
59-12	-149921.731	6.554	-41011.357	-9.682	-268788.433778	1451542.199542	265-33-46	83-52-51	9.927
59-100	-149922.499	-1.297	-41021.254	-16.969	53204.566438	2544034.885531	265-43-20	180-09-34	7.092
合計				倍面積 面積	230.664574 115.33	-230.664574 115.33			51.296

面積 (座標法) 計算書

地番 = 59-2  
測点名

	[1] X (i)	[2] X (i+1)-X (i-1)	[3] Y (i)	[4] Y (i+1)-Y (i-1)	[2] * [3]	[1] * [4]	方向角	夾角	距離
59-13	-149920.632	19.666	-40996.767	-15.024	-806242.419822	2252407.575168	265-41-32	86-53-22	14.631
59-12	-149921.731	-8.421	-41011.357	-14.805	345356.637297	2219591.227455	181-40-55	95-59-23	7.325
59-32K	-149929.053	-15.244	-41011.572	-0.424	625180.403568	63569.918472	181-30-40	179-49-45	7.925
59-107	-149936.975	-12.761	-41011.781	-0.359	523351.337341	53827.374025	181-46-32	180-15-52	4.841
59-36K	-149941.814	-4.422	-41011.931	15.448	181354.758882	-2316301.142672	88-28-07	86-41-35	15.604
59-35K	-149941.397	21.182	-40996.333	15.164	-868384.325606	-2273711.344108	358-48-10	90-20-03	20.770
合計				倍面積 面積	616.391660 308.19	-616.391660 308.19			71.096

面積 (座標法) 計算書

地番 = 59-3  
測点名

	[1] X (i)	[2] X (i+1)-X (i-1)	[3] Y (i)	[4] Y (i+1)-Y (i-1)	[2] * [3]	[1] * [4]	方向角	夾角	距離
59-56K	-149950.448	-16.037	-41012.198	-55.625	657712.619326	8340993.670000	181-46-26	93-18-19	14.569
59-42K	-149965.010	-26.668	-41012.649	-0.833	1093725.323532	124920.853330	181-48-26	180-02-00	12.112
59-63	-149977.116	-12.045	-41013.031	4.896	494001.958395	-734287.959936	89-20-16	87-31-50	5.278
59-46	-149977.055	0.465	-41007.753	22.229	-19068.605145	-3333839.955595	88-38-05	179-17-49	16.956
59-40	-149976.651	3.340	-40990.802	16.913	-136909.278680	-2536555.098363	359-15-31	90-37-26	2.936
59-39K	-149973.715	3.103	-40990.840	8.340	-127194.576520	-1250780.783100	88-51-29	269-35-58	8.380
59-44K	-149973.548	0.523	-40982.462	21.669	-21433.827626	-3249776.811612	88-27-57	179-36-28	13.296
59-109	-149973.192	0.677	-40969.171	26.579	-27736.128767	-3986137.470168	88-36-58	180-09-01	13.292
59-15K	-149972.871	22.592	-40955.883	12.212	-925275.308736	-1831468.700652	357-14-02	88-37-04	22.297
59-7	-149950.600	23.898	-40956.959	-1.141	-978789.406182	171093.634600	357-42-44	180-28-42	1.628
59-55K	-149948.973	0.152	-40957.024	-55.239	-6225.467648	8283031.319547	268-28-07	90-45-23	55.194
合計				倍面積 面積	2807.301949 1403.65	-2807.301949 1403.65			165.938

**面積 (座標法) 計算書**

地番 = 59-4  
測点名

	[1] X (i)	[2] X (i+1)-X (i-1)	[3] Y (i)	[4] Y (i+1)-Y (i-1)	[2]*[3]	[1]*[4]	方向角	夾角	距離
59-69	-149919.110	-22.799	-40976.831	-13.392	934230.769969	2007716.721120	178-48-06	93-07-18	21.758
59-70K	-149940.863	-21.245	-40976.376	19.483	870543.108120	-2921297.833829	88-28-15	89-40-09	19.035
59-54	-149940.355	3.737	-40957.348	18.896	-153057.609476	-2833272.948080	357-39-33	89-11-18	3.232
59-104	-149937.126	9.238	-40957.480	-0.352	-378365.200240	52777.868352	357-54-12	180-14-39	6.013
59-103	-149931.117	9.569	-40957.700	-0.333	-391924.231300	49927.061961	358-10-55	180-16-43	3.562
59-5	-149927.557	5.585	-40957.813	-0.157	-228749.385605	23538.626449	358-45-19	180-34-24	2.025
59-102	-149925.532	6.910	-40957.857	-0.103	-283018.791870	15442.329796	359-18-29	180-33-10	4.885
59-4	-149920.647	7.637	-40957.916	-3.129	-312795.604492	469101.704463	311-52-25	132-33-56	4.123
59-3	-149917.895	2.583	-40960.986	-5.068	-105802.226838	759783.891860	265-09-55	133-17-30	2.005
59-101	-149918.064	-1.215	-40962.984	-15.845	49770.025560	2375451.724080	265-40-48	180-30-53	13.886
合計				倍面積 面積	830.853828 415.42	-830.853828 415.42			80.524

**面積 (座標法) 計算書**

地番 = 59-5  
測点名

	[1] X (i)	[2] X (i+1)-X (i-1)	[3] Y (i)	[4] Y (i+1)-Y (i-1)	[2]*[3]	[1]*[4]	方向角	夾角	距離
59-16	-149990.195	-16.040	-40982.114	24.364	657353.108560	-3654361.110980	88-33-08	89-44-59	24.024
59-9	-149989.588	3.655	-40958.098	26.880	-149701.848190	-4031720.125440	43-13-02	134-39-54	4.182
59-8	-149986.540	16.717	-40955.234	2.215	-684648.646778	-332220.186100	357-16-54	134-03-52	13.684
59-15K	-149972.871	13.348	-40955.883	-13.937	-546679.126284	2090171.903127	268-36-58	91-20-04	13.292
59-109	-149973.192	-0.677	-40969.171	-26.579	27736.128767	3986137.470168	268-27-57	179-50-59	13.296
59-44K	-149973.548	-17.003	-40982.462	-12.943	696824.801386	1941107.631764	178-48-09	90-20-12	16.651
合計				倍面積 面積	884.417461 442.20	-884.417461 442.20			85.129

**面積 (座標法) 計算書**

地番 = 59-6  
測点名

	[1] X (i)	[2] X (i+1)-X (i-1)	[3] Y (i)	[4] Y (i+1)-Y (i-1)	[2]*[3]	[1]*[4]	方向角	夾角	距離
59-16	-149990.195	16.861	-40982.114	8.056	-690999.424154	-1208321.010920	358-48-09	90-15-40	16.651
59-44K	-149973.548	16.480	-40982.462	-8.726	-675390.973760	1308669.179848	268-51-29	90-03-20	8.380
59-39K	-149973.715	-3.103	-40990.840	-8.340	127194.576520	1250780.783100	179-15-31	90-24-02	2.936
59-40	-149976.651	-16.694	-40990.802	0.322	684300.448588	-48292.481622	178-49-03	179-33-32	13.761
59-17	-149990.409	-13.544	-40990.518	8.688	555175.575792	-1303116.673392	88-32-29	89-43-26	8.407
合計				倍面積 面積	280.202986 140.10	-280.202986 140.10			50.135

面積 (座標法) 計算書

地番 = 59-7  
測点名

	[1] X (i)	[2] X (i+1)-X (i-1)	[3] Y (i)	[4] Y (i+1)-Y (i-1)	[2] * [3]	[1] * [4]	方向角	夾 角	距 離
59-18K	-149990.453	-13.717	-40992.247	2.013	562290.652099	-301930.781889	88-32-32	89-43-28	1.730
59-17	-149990.409	13.802	-40990.518	1.445	-565751.129436	-216736.141005	358-49-03	90-16-31	13.761
59-40	-149976.651	13.717	-40990.802	-2.013	-562270.831034	301902.998463	268-38-30	89-49-27	1.729
59-45K	-149976.692	-13.802	-40992.531	-1.445	565778.912862	216716.319940	178-49-04	90-10-34	13.764
合計				倍面積 面積	47.604491 23.80	-47.604491 23.80			30.984

面積 (座標法) 計算書

地番 = 59-8  
測点名

	[1] X (i)	[2] X (i+1)-X (i-1)	[3] Y (i)	[4] Y (i+1)-Y (i-1)	[2] * [3]	[1] * [4]	方向角	夾 角	距 離
59-45K	-149976.692	13.398	-40992.531	-15.506	-549217.930338	2325538.586152	268-38-02	89-48-58	15.226
59-46	-149977.055	-14.154	-41007.753	-15.150	580423.735962	2272152.383250	179-42-03	91-04-01	13.791
59-19	-149990.846	-13.398	-41007.681	15.506	549420.910038	-2325758.058076	88-32-29	88-50-26	15.439
59-18K	-149990.453	14.154	-40992.247	15.150	-580204.264038	-2272355.362950	358-49-04	90-16-35	13.764
合計				倍面積 面積	422.451624 211.22	-422.451624 211.22			58.220

面積 (座標法) 計算書

地番 = 59-9  
測点名

	[1] X (i)	[2] X (i+1)-X (i-1)	[3] Y (i)	[4] Y (i+1)-Y (i-1)	[2] * [3]	[1] * [4]	方向角	夾 角	距 離
59-64	-149991.274	-13.623	-41024.559	17.318	558877.567257	-2597548.883132	88-32-51	90-20-28	16.883
59-19	-149990.846	14.219	-41007.681	16.806	-583088.216139	-2520746.157876	359-42-03	91-09-12	13.791
59-46	-149977.055	13.730	-41007.753	-5.350	-563036.448690	802377.244250	269-20-16	89-38-13	5.278
59-63	-149977.116	-0.168	-41013.031	-17.246	6890.189208	2586505.342536	269-29-16	180-09-00	11.968
59-65K	-149977.223	-14.158	-41024.999	-11.528	580831.935842	1728937.426744	178-12-23	88-43-07	14.058
合計				倍面積 面積	475.027478 237.51	-475.027478 237.51			61.978

面積 (座標法) 計算書

地番 = 59-10  
測点名

	[1] X (i)	[2] X (i+1)-X (i-1)	[3] Y (i)	[4] Y (i+1)-Y (i-1)	[2] * [3]	[1] * [4]	方向角	夾 角	距 離
59-64	-149991.274	14.174	-41024.559	4.414	-581482.099266	-662061.483436	358-12-23	89-39-29	14.058
59-65K	-149977.223	14.007	-41024.999	-5.325	-574637.160993	798628.712475	269-29-02	91-16-39	4.885
59-67K	-149977.267	-14.174	-41029.884	-4.414	581557.575816	661999.656538	178-05-27	88-36-25	14.138
59-66	-149991.397	-14.007	-41029.413	5.325	574698.987891	-798704.189025	88-32-54	90-27-27	4.856
合計				倍面積 面積	137.303448 68.65	-137.303448 68.65			37.937

面積 (座標法) 計算書

地番 = 59-11  
測点名

	[1] X (i)	[2] X (i+1)-X (i-1)	[3] Y (i)	[4] Y (i+1)-Y (i-1)	[2] * [3]	[1] * [4]	方向角	夾角	距離
59-66	-149991.397	14.152	-41029.413	0.472	-580648.252776	-70795.939384	358-05-27	89-25-38	14.138
59-67K	-149977.267	14.103	-41029.884	-3.516	-578644.454052	527320.070772	269-29-31	91-24-04	3.045
59-62	-149977.294	-11.231	-41032.929	-3.382	460840.825599	507223.208308	181-43-22	92-13-51	11.209
59-11K	-149988.498	-14.125	-41033.266	2.573	579594.882250	-385920.405354	135-06-29	133-23-07	4.123
59-10	-149991.419	-2.899	-41030.356	3.853	118947.002044	-577916.937407	88-39-49	133-33-20	0.943
合計				倍面積 面積	90.003065 45.00	-90.003065 45.00			33.458

面積 (座標法) 計算書

地番 = 59-13  
測点名

	[1] X (i)	[2] X (i+1)-X (i-1)	[3] Y (i)	[4] Y (i+1)-Y (i-1)	[2] * [3]	[1] * [4]	方向角	夾角	距離
59-25	-149964.760	-12.284	-41032.551	-20.280	504043.856484	3041285.332800	181-43-39	91-00-28	12.540
59-62	-149977.294	-12.356	-41032.929	19.520	507002.870724	-2927556.778880	89-29-15	87-45-36	19.899
59-63	-149977.116	12.284	-41013.031	20.280	-503804.072804	-3041535.912480	1-48-26	92-19-11	12.112
59-42K	-149965.010	12.356	-41012.649	-19.520	-506752.291044	2927316.995200	270-43-11	88-54-45	19.904
合計				倍面積 面積	490.363360 245.18	-490.363360 245.18			64.455

面積 (座標法) 計算書

地番 = 59-15  
測点名

	[1] X (i)	[2] X (i+1)-X (i-1)	[3] Y (i)	[4] Y (i+1)-Y (i-1)	[2] * [3]	[1] * [4]	方向角	夾角	距離
59-76K	-149964.068	8.167	-41012.620	20.164	-334950.067540	-3023875.467152	1-46-34	91-03-23	8.421
59-75K	-149955.651	8.593	-41012.359	-19.655	-352419.200887	2947378.320405	270-30-23	88-43-49	19.917
59-72	-149955.475	-8.167	-41032.275	-20.164	335110.589925	3023702.197900	181-42-10	91-11-47	8.347
59-71K	-149963.818	-8.593	-41032.523	19.655	352592.470139	-2947538.842790	90-43-11	89-01-01	19.905
合計				倍面積 面積	333.791637 166.89	-333.791637 166.89			56.590

面積 (座標法) 計算書

地番 = 59-16  
測点名

	[1] X (i)	[2] X (i+1)-X (i-1)	[3] Y (i)	[4] Y (i+1)-Y (i-1)	[2] * [3]	[1] * [4]	方向角	夾角	距離
59-74K	-149954.763	8.269	-41012.332	20.178	-339130.973308	-3025787.207814	1-46-38	91-16-26	8.448
59-43K	-149946.319	8.616	-41012.070	-19.658	-353359.995120	2947644.738902	270-29-41	88-43-03	19.921
59-27	-149946.147	-8.269	-41031.990	-20.178	339293.525310	3025613.354166	181-45-03	91-15-22	8.445
59-73K	-149954.588	-8.616	-41032.248	19.658	353533.848768	-2947807.290904	90-30-12	88-45-09	19.917
合計				倍面積 面積	336.405650 168.20	-336.405650 168.20			56.731

面積 (座標法) 計算書

地番 = 59-17

測点名	[1] X (i)	[2] X (i+1)-X (i-1)	[3] Y (i)	[4] Y (i+1)-Y (i-1)	[2] * [3]	[1] * [4]	方向角	夾角	距離
59-28K	-149945.060	-0.916	-41031.957	-19.954	37585.272612	2992003.727240	181-44-20	91-14-49	1.088
59-27	-149946.147	-1.259	-41031.990	19.887	51659.275410	-2981979.025389	90-29-41	88-45-21	19.921
59-43K	-149946.319	0.916	-41012.070	19.954	-37567.056120	-2992028.849326	1-47-24	91-17-43	1.089
59-52K	-149945.231	1.259	-41012.036	-19.887	-51634.153324	2981960.808897	270-29-31	88-42-07	19.922
合計				倍面積 面積	43.338578 21.66	-43.338578 21.66			42.020

面積 (座標法) 計算書

地番 = 59-18

測点名	[1] X (i)	[2] X (i+1)-X (i-1)	[3] Y (i)	[4] Y (i+1)-Y (i-1)	[2] * [3]	[1] * [4]	方向角	夾角	距離
59-52K	-149945.231	8.085	-41012.036	20.176	-331582.311060	-3025294.980656	1-46-09	91-16-38	8.260
59-107	-149936.975	8.449	-41011.781	-19.671	-346508.537669	2949410.235225	270-33-18	88-47-09	19.927
59-29	-149936.782	-8.085	-41031.707	-20.176	331741.351095	3025124.513632	181-43-47	91-10-29	8.282
59-28K	-149945.060	-8.449	-41031.957	19.671	346679.004693	-2949569.275260	90-29-31	88-45-44	19.922
合計				倍面積 面積	329.507059 164.75	-329.507059 164.75			56.391

面積 (座標法) 計算書

地番 = 59-19

測点名	[1] X (i)	[2] X (i+1)-X (i-1)	[3] Y (i)	[4] Y (i+1)-Y (i-1)	[2] * [3]	[1] * [4]	方向角	夾角	距離
59-30K	-149935.996	-0.594	-41031.684	-19.947	24372.820296	2990773.312212	181-40-34	91-07-26	0.786
59-29	-149936.782	-0.979	-41031.707	19.903	40170.041153	-2984191.772146	90-33-18	88-52-44	19.927
59-107	-149936.975	0.594	-41011.781	19.947	-24360.997914	-2990792.840325	1-31-43	90-58-25	0.787
59-53K	-149936.188	0.979	-41011.760	-19.903	-40150.513040	2984179.949764	270-33-08	89-01-25	19.925
合計				倍面積 面積	31.350495 15.67	-31.350495 15.67			41.425

面積 (座標法) 計算書

地番 = 59-20

測点名	[1] X (i)	[2] X (i+1)-X (i-1)	[3] Y (i)	[4] Y (i+1)-Y (i-1)	[2] * [3]	[1] * [4]	方向角	夾角	距離
59-53K	-149936.188	6.943	-41011.760	20.112	-284744.649680	-3015516.613056	1-30-34	90-57-26	7.137
59-32K	-149929.053	7.261	-41011.572	-14.179	-297785.024292	2125844.042487	270-30-09	88-59-35	14.368
59-33	-149928.927	1.748	-41025.939	-14.350	-71713.341372	2151480.102450	0-36-02	270-05-53	1.622
59-34	-149927.305	1.667	-41025.922	-5.486	-68390.211974	822501.195230	270-28-07	89-52-05	5.503
59-31K	-149927.260	-8.691	-41031.425	-5.762	356604.114675	863880.872120	181-41-53	91-13-46	8.740
59-30K	-149935.996	-8.928	-41031.684	19.665	366330.874752	-2948491.361340	90-33-08	88-51-15	19.925
合計				倍面積 面積	301.762109 150.88	-301.762109 150.88			57.295



面積 (座標法) 計算書

地番 = 59-21

測点名	[1] X (i)	[2] X (i+1)-X (i-1)	[3] Y (i)	[4] Y (i+1)-Y (i-1)	[2] * [3]	[1] * [4]	方向角	夾角	距離
59-14	-149919.482	20.363	-40981.757	-15.465	-834511.517791	2318504.789130	265-37-08	86-49-50	15.054
59-13	-149920.632	-21.915	-40996.767	-14.576	898444.148805	2185243.132032	178-48-10	93-11-02	20.770
59-35K	-149941.397	-20.363	-40996.333	15.465	834808.328879	-2318843.704605	88-28-05	89-39-55	15.036
59-38K	-149940.995	21.915	-40981.302	14.576	-898105.233330	-2185539.943120	358-47-18	90-19-13	21.518
合計				倍面積 面積	635.726563 317.86	-635.726563 317.86			72.378

面積 (座標法) 計算書

地番 = 59-22

測点名	[1] X (i)	[2] X (i+1)-X (i-1)	[3] Y (i)	[4] Y (i+1)-Y (i-1)	[2] * [3]	[1] * [4]	方向角	夾角	距離
59-55K	-149948.973	9.308	-40957.024	54.861	-381227.979392	-8226350.607753	357-42-42	89-14-35	7.839
59-6	-149941.140	8.618	-40957.337	-0.324	-352970.330266	48580.929360	359-11-50	181-29-08	0.785
59-54	-149940.355	-0.674	-40957.348	-54.594	27605.252552	8185843.740870	268-28-08	89-16-18	54.602
59-36K	-149941.814	-10.093	-41011.931	-54.850	413933.419583	8224308.497900	181-46-17	93-18-09	8.638
59-56K	-149950.448	-7.159	-41012.198	54.907	293606.325482	-8233329.248336	88-28-07	86-41-50	55.194
合計				倍面積 面積	946.687959 473.34	-946.687959 473.34			127.058

面積 (座標法) 計算書

地番 = 59-23

測点名	[1] X (i)	[2] X (i+1)-X (i-1)	[3] Y (i)	[4] Y (i+1)-Y (i-1)	[2] * [3]	[1] * [4]	方向角	夾角	距離
59-69	-149919.110	21.381	-40976.831	-5.381	-876125.623611	806714.730910	265-40-53	86-52-47	4.940
59-14	-149919.482	-21.885	-40981.757	-4.471	896885.751945	670290.004022	178-47-18	93-06-25	21.518
59-38K	-149940.995	-21.381	-40981.302	5.381	876221.218062	-806832.494095	88-27-54	89-40-36	4.928
59-70K	-149940.863	21.885	-40976.376	4.471	-896767.988760	-670385.598473	358-48-06	90-20-12	21.758
合計				倍面積 面積	213.357636 106.67	-213.357636 106.67			53.144

面積 (座標法) 計算書

地番 = 59-24

測点名	[1] X (i)	[2] X (i+1)-X (i-1)	[3] Y (i)	[4] Y (i+1)-Y (i-1)	[2] * [3]	[1] * [4]	方向角	夾角	距離
59-71K	-149963.818	-0.692	-41032.523	-19.931	28394.505916	2988928.856558	181-42-09	90-58-58	0.942
59-25	-149964.760	-1.192	-41032.551	19.874	48910.800792	-2980399.640240	90-43-11	89-01-02	19.904
59-42K	-149965.010	0.692	-41012.649	19.931	-28380.753108	-2988952.614310	1-45-48	91-02-37	0.942
59-76K	-149964.068	1.192	-41012.620	-19.874	-48887.043040	2980385.887432	270-43-11	88-57-23	19.905
合計				倍面積 面積	37.510560 18.75	-37.510560 18.75			41.693

面積 (座標法) 計算書

地番 = 59-25  
測点名

	[1] X (i)	[2] X (i+1)-X (i-1)	[3] Y (i)	[4] Y (i+1)-Y (i-1)	[2] * [3]	[1] * [4]	方向角	夾 角	距 離
59-73K	-149954.588	-0.712	-41032.248	-19.943	29214.960576	2990544.348484	181-44-37	91-14-25	0.887
59-72	-149955.475	-1.063	-41032.275	19.889	43617.308325	-2982464.442275	90-30-23	88-45-46	19.917
59-75K	-149955.651	0.712	-41012.359	19.943	-29200.799608	-2990565.547893	1-44-30	91-14-07	0.888
59-74K	-149954.763	1.063	-41012.332	-19.889	-43596.108916	2982450.281307	270-30-12	88-45-42	19.917
合計				倍面積 面積	35.360377 17.68	-35.360377 17.68			41.609