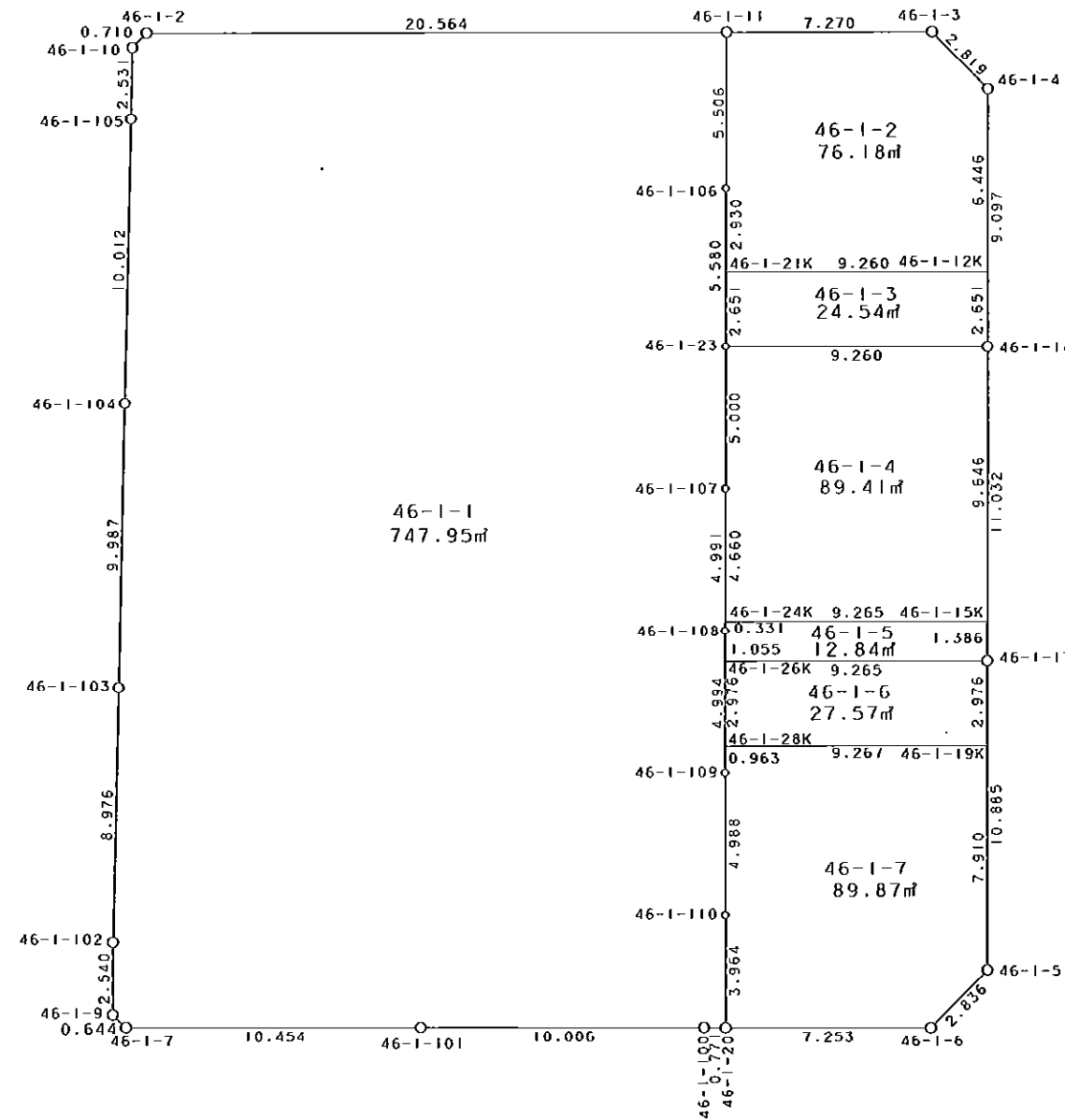


西部第4地区土地区画整理事業 出来形確認測量（原子図）

46-1街区



S = 1 / 250



凡 例

記号	名称
⊙	地区界点
○	街区点
○	画地点(折れ点)
	画地点(直線中)

面積 (座標法) 計算書

地番 = 46-1街区

測点名	[1] X (i)	[2] X (i+1)-X (i-1)	[3] Y (i)	[4] Y (i+1)-Y (i-1)	[2] * [3]	[1] * [4]	方向角	夾角	距離
46-1-2	-149944.764	-0.938	-41270.585	-21.044	38711.808730	3155437.613616	223-00-05	134-10-08	0.710
46-1-10	-149945.283	-3.050	-41271.069	-0.481	125876.760450	72123.681123	179-55-56	136-55-51	2.531
46-1-105	-149947.814	-12.543	-41271.066	-0.004	517662.980838	599.791256	180-02-24	180-06-28	10.012
46-1-104	-149957.826	-19.999	-41271.073	-0.009	825380.188927	1349.620434	180-00-41	179-58-17	9.987
46-1-103	-149967.813	-18.963	-41271.075	-0.008	782623.395225	1199.742504	180-02-18	180-01-37	8.976
46-1-102	-149976.789	-11.516	-41271.081	0.041	475277.768796	-6149.048349	178-56-24	178-54-06	2.540
46-1-9	-149979.329	-2.971	-41271.034	0.525	122616.242014	-78739.147725	132-02-25	133-06-01	0.644
46-1-7	-149979.760	-0.217	-41270.556	10.930	8955.710652	-1639278.776800	88-49-37	136-47-12	10.454
46-1-101	-149979.546	0.394	-41260.104	20.456	-16256.480976	-3067981.592976	88-58-09	180-08-32	10.006
46-1-100	-149979.366	0.185	-41250.100	10.775	-7631.268500	-1616027.668650	89-37-42	180-39-33	0.771
46-1-20	-149979.361	0.137	-41249.329	8.023	-5651.158073	-1203284.413303	88-57-26	179-19-44	7.253
46-1-6	-149979.229	2.189	-41242.077	9.205	-90278.906553	-1380558.802945	43-30-52	134-33-26	2.836
46-1-5	-149977.172	12.940	-41240.124	1.725	-533647.204560	-258710.621700	358-47-59	135-17-07	10.885
46-1-17	-149966.289	21.913	-41240.352	-0.440	-903699.833376	65985.167160	358-53-56	180-05-57	11.032
46-1-14	-149955.259	20.125	-41240.564	-0.392	-829966.350500	58782.461528	358-51-58	179-58-02	9.097
46-1-4	-149946.164	11.068	-41240.744	-2.193	-456452.554592	328831.937652	314-25-30	135-33-32	2.819
46-1-3	-149944.191	1.819	-41242.757	-9.281	-75020.574983	1391632.036671	268-47-10	134-21-40	7.270
46-1-11	-149944.345	-0.573	-41250.025	-27.828	23636.264325	4172651.232660	268-49-57	180-02-47	20.564
合計				倍面積 面積	2136.787844 1068.39	-2136.787844 1068.39			128.387

地番	筆種別	面積	坪数
46-1-1	筆界	747.95	226.25
46-1-2	筆界	76.18	23.04
46-1-3	筆界	24.54	7.42
46-1-4	筆界	89.41	27.04
46-1-5	筆界	12.84	3.88
46-1-6	筆界	27.57	8.34
46-1-7	筆界	89.87	27.18
	筆合計	1068.36	323.15

面積 (座標法) 計算書

地番 = 46-1-1
測点名

	[1] X (i)	[2] X (i+1)-X (i-1)	[3] Y (i)	[4] Y (i+1)-Y (i-1)	[2] * [3]	[1] * [4]	方向角	夾角	距離
46-1-2	-149944.764	-0.938	-41270.585	-21.044	38711.808730	3155437.613616	223-00-05	134-10-08	0.710
46-1-10	-149945.283	-3.050	-41271.069	-0.481	125876.760450	72123.681123	179-55-56	136-55-51	2.531
46-1-105	-149947.814	-12.543	-41271.066	-0.004	517662.980838	599.791256	180-02-24	180-06-28	10.012
46-1-104	-149957.826	-19.999	-41271.073	-0.009	825380.188927	1349.620434	180-00-41	179-58-17	9.987
46-1-103	-149967.813	-18.963	-41271.075	-0.008	782623.395225	1199.742504	180-02-18	180-01-37	8.976
46-1-102	-149976.789	-11.516	-41271.081	0.041	475277.768796	-6149.048349	178-56-24	178-54-06	2.540
46-1-9	-149979.329	-2.971	-41271.034	0.525	122616.242014	-78739.147725	132-02-25	133-06-01	0.644
46-1-7	-149979.760	-0.217	-41270.556	10.930	8955.710652	-1639278.776800	88-49-37	136-47-12	10.454
46-1-101	-149979.546	0.394	-41260.104	20.456	-16256.480976	-3067981.592976	88-58-09	180-08-32	10.006
46-1-100	-149979.366	0.185	-41250.100	10.775	-7631.268500	-1616027.668650	89-37-42	180-39-33	0.771
46-1-20	-149979.361	3.968	-41249.329	0.676	-163677.337472	-101386.048036	358-37-36	88-59-54	3.964
46-1-110	-149975.398	8.950	-41249.424	-0.206	-369182.344800	30894.931988	358-43-30	180-05-54	4.988
46-1-109	-149970.411	9.980	-41249.535	-0.212	-411670.359300	31793.727132	358-50-28	180-06-58	4.994
46-1-108	-149965.418	9.983	-41249.636	-0.196	-411795.116188	29393.221928	358-54-34	180-04-06	4.991
46-1-107	-149960.428	9.989	-41249.731	-0.186	-412043.562959	27892.639608	358-57-26	180-02-52	5.000
46-1-23	-149955.429	10.578	-41249.822	-0.200	-436340.617116	29991.085800	358-52-51	179-55-25	5.580
46-1-106	-149949.850	11.084	-41249.931	-0.203	-457214.235204	30439.819550	359-01-18	180-08-27	5.506
46-1-11	-149944.345	5.086	-41250.025	-20.654	-209797.627150	3096950.501630	268-49-57	89-48-39	20.564
合計				倍面積 面積	1495.905967 747.95	-1495.905967 747.95			112.218

面積 (座標法) 計算書

地番 = 46-1-2
測点名

	[1] X (i)	[2] X (i+1)-X (i-1)	[3] Y (i)	[4] Y (i+1)-Y (i-1)	[2] * [3]	[1] * [4]	方向角	夾角	距離
46-1-12K	-149952.609	6.615	-41240.616	9.130	-272806.674840	-1369067.320170	358-51-44	89-54-51	6.446
46-1-4	-149946.164	8.418	-41240.744	-2.141	-347164.582992	321034.737124	314-25-30	135-33-46	2.819
46-1-3	-149944.191	1.819	-41242.757	-9.281	-75020.574983	1391632.036671	268-47-10	134-21-40	7.270
46-1-11	-149944.345	-5.659	-41250.025	-7.174	233433.891475	1075700.731030	179-01-18	90-14-08	5.506
46-1-106	-149949.850	-8.434	-41249.931	0.151	347901.918054	-22642.427350	178-53-06	179-51-48	2.930
46-1-21K	-149952.779	-2.759	-41249.874	9.315	113808.402366	-1396810.136385	88-56-53	90-03-47	9.260
合計				倍面積 面積	152.379080 76.18	-152.379080 76.18			34.231

面積 (座標法) 計算書

地番 = 46-1-3
測点名

	[1] X (i)	[2] X (i+1)-X (i-1)	[3] Y (i)	[4] Y (i+1)-Y (i-1)	[2] * [3]	[1] * [4]	方向角	夾角	距離
46-1-21K	-149952.779	-2.820	-41249.874	-9.206	116324.644680	1380465.283474	178-52-33	89-55-40	2.651
46-1-23	-149955.429	-2.480	-41249.822	9.310	102299.558560	-1396085.043990	88-56-53	90-04-20	9.260
46-1-14	-149955.259	2.820	-41240.564	9.206	-116298.390480	-1380488.114354	358-52-33	89-55-40	2.651
46-1-12K	-149952.609	2.480	-41240.616	-9.310	-102276.727680	1396058.789790	268-56-53	90-04-20	9.260
合計				倍面積 面積	49.085080 24.54	-49.085080 24.54			23.822

面積 (座標法) 計算書

地番 = 46-1-4
測点名

	[1] X (i)	[2] X (i+1)-X (i-1)	[3] Y (i)	[4] Y (i+1)-Y (i-1)	[2] * [3]	[1] * [4]	方向角	夾角	距離
46-1-15K	-149964.903	9.828	-41240.379	9.078	-405310.444812	-1361381.389434	358-54-04	90-02-21	9.646
46-1-14	-149955.259	9.474	-41240.564	-9.443	-390713.103336	1416027.510737	268-56-53	90-02-49	9.260
46-1-23	-149955.429	-5.169	-41249.822	-9.167	213220.329918	1374641.417643	178-57-26	90-00-33	5.000
46-1-107	-149960.428	-9.658	-41249.731	0.180	398389.901998	-26992.877040	178-54-20	179-56-54	4.660
46-1-24K	-149965.087	-4.475	-41249.642	9.352	184592.147950	-1402473.493624	88-51-43	89-57-23	9.265
合計				倍面積 面積	178.831718 89.41	-178.831718 89.41			37.831

面積 (座標法) 計算書

地番 = 46-1-5
測点名

	[1] X (i)	[2] X (i+1)-X (i-1)	[3] Y (i)	[4] Y (i+1)-Y (i-1)	[2] * [3]	[1] * [4]	方向角	夾角	距離
46-1-24K	-149965.087	-0.515	-41249.642	-9.257	21243.565630	1388226.810359	178-57-41	90-05-58	0.331
46-1-108	-149965.418	-1.386	-41249.636	0.027	57171.995496	-4049.066286	178-51-35	179-53-54	1.055
46-1-26K	-149966.473	-0.871	-41249.615	9.284	35928.414665	-1392288.735332	88-51-43	90-00-08	9.265
46-1-17	-149966.289	1.570	-41240.352	9.236	-64747.352640	-1385088.645204	358-53-02	90-01-19	1.386
46-1-15K	-149964.903	1.202	-41240.379	-9.290	-49570.935558	1393173.948870	268-51-43	89-58-41	9.265
合計				倍面積 面積	25.687593 12.84	-25.687593 12.84			21.302

面積 (座標法) 計算書

地番 = 46-1-6
測点名

	[1] X (i)	[2] X (i+1)-X (i-1)	[3] Y (i)	[4] Y (i+1)-Y (i-1)	[2] * [3]	[1] * [4]	方向角	夾角	距離
46-1-19K	-149969.264	3.159	-41240.290	9.203	-130278.076110	-1380167.136592	358-48-22	89-56-38	2.976
46-1-17	-149966.289	2.791	-41240.352	-9.325	-115101.822432	1398435.644925	268-51-43	90-03-21	9.265
46-1-26K	-149966.473	-3.159	-41249.615	-9.203	130307.533785	1380141.451019	178-50-41	89-58-58	2.976
46-1-28K	-149969.448	-2.791	-41249.555	9.325	115127.508005	-1398465.102600	88-51-44	90-01-03	9.267
合計				倍面積 面積	55.143248 27.57	-55.143248 27.57			24.484

面積 (座標法) 計算書

地番 = 46-1-7
測点名

	[1] X (i)	[2] X (i+1)-X (i-1)	[3] Y (i)	[4] Y (i+1)-Y (i-1)	[2] * [3]	[1] * [4]	方向角	夾角	距離
46-1-28K	-149969.448	-1.147	-41249.555	-9.245	47313.239585	1386467.546760	178-48-37	89-56-53	0.963
46-1-109	-149970.411	-5.950	-41249.535	0.131	245434.733250	-19646.123841	178-43-30	179-54-53	4.988
46-1-110	-149975.398	-8.950	-41249.424	0.206	369182.344800	-30894.931988	178-37-36	179-54-06	3.964
46-1-20	-149979.361	-3.831	-41249.329	7.347	158026.179399	-1101898.365267	88-57-26	90-19-50	7.253
46-1-6	-149979.229	2.189	-41242.077	9.205	-90278.906553	-1380558.802945	43-30-52	134-33-26	2.836
46-1-5	-149977.172	9.965	-41240.124	1.787	-410957.835660	-268009.206364	358-47-51	135-16-59	7.910
46-1-19K	-149969.264	7.724	-41240.290	-9.431	-318539.999960	1414360.128784	268-51-44	90-03-53	9.267
合計				倍面積 面積	179.754861 89.87	-179.754861 89.87			37.181