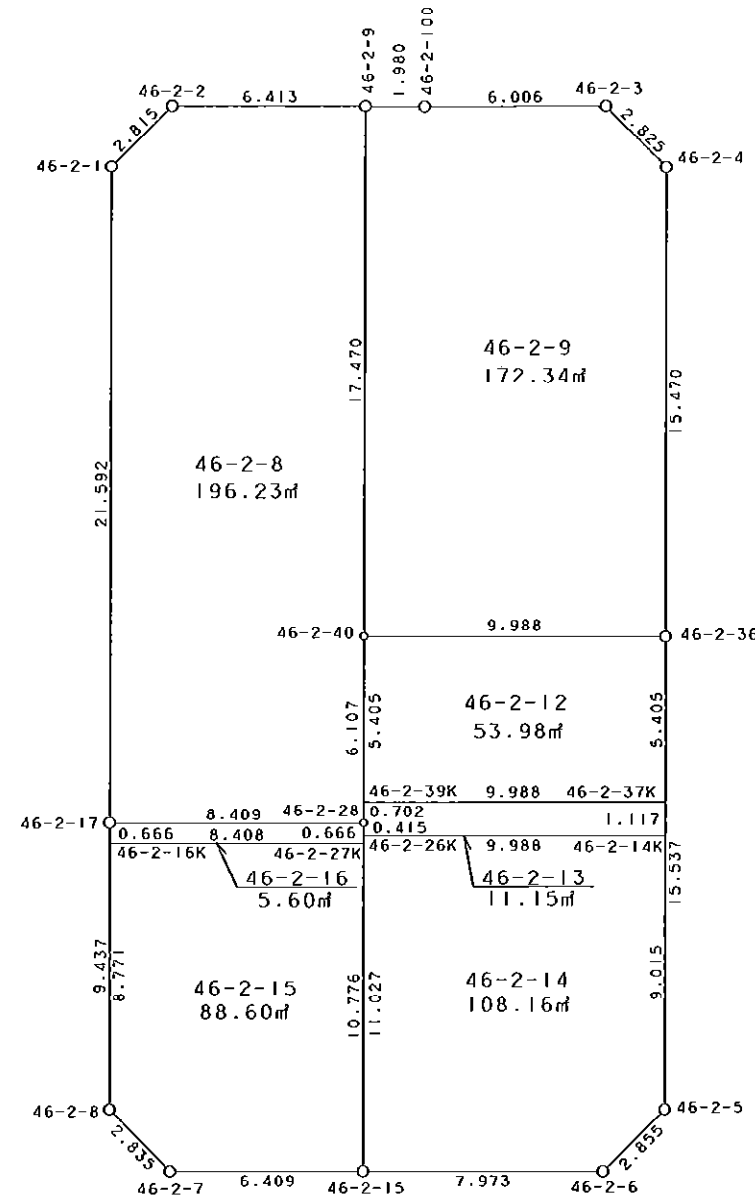


46-2街区



S - 1 / 250



凡 例

記号	名称
⊙	地区界点
○	街区点
○	画地点(折れ点)
┆	画地点(直線中)

面積 (座標法) 計算書

地番 = 46-2街区

測点名	[1] X (i)	[2] X (i+1)-X (i-1)	[3] Y (i)	[4] Y (i+1)-Y (i-1)	[2] * [3]	[1] * [4]	方向角	夾 角	距 離
46-2-2	-149944.048	-2.149	-41234.779	-8.369	88613.540071	1254881.737712	224-03-00	135-10-33	2.815
46-2-1	-149946.071	-23.611	-41236.736	-1.542	973640.573696	231216.841482	178-53-55	134-50-55	21.592
46-2-17	-149967.659	-31.023	-41236.321	0.614	1279274.386383	-92080.142626	178-47-30	179-53-35	9.437
46-2-8	-149977.094	-11.416	-41236.122	2.227	470751.568752	-333998.988338	134-19-42	135-32-12	2.835
46-2-7	-149979.075	-1.841	-41234.094	8.435	75911.967054	-1265073.497625	88-44-54	134-25-12	6.409
46-2-15	-149978.935	0.287	-41227.687	14.379	-11832.346169	-2156547.106365	88-56-37	180-11-43	7.973
46-2-6	-149978.788	2.210	-41219.715	9.945	-91095.570150	-1491539.046660	43-43-21	134-46-44	2.855
46-2-5	-149976.725	17.597	-41217.742	1.667	-725308.605974	-250011.200575	358-52-17	135-08-56	15.537
46-2-36	-149961.191	31.001	-41218.048	-0.614	-1277800.706048	92076.171274	358-51-33	179-59-16	15.470
46-2-4	-149945.724	17.434	-41218.356	-2.335	-718600.818504	350123.265540	314-08-22	135-16-49	2.825
46-2-3	-149943.757	1.828	-41220.383	-8.031	-75350.860124	1204198.312467	268-40-26	134-32-04	6.006
46-2-100	-149943.896	-0.165	-41226.387	-7.984	6802.353855	1197152.065664	269-14-52	180-34-26	1.980
46-2-9	-149943.922	-0.152	-41228.367	-8.392	6266.711784	1258329.393424	268-52-27	179-37-35	6.413
合計				倍面積 面積	1272.194626 636.09	-1272.194626 636.09			102.147

地番	筆種別	面積	坪数
46-2-8	筆界	196.23	59.36
46-2-9	筆界	172.34	52.13
46-2-12	筆界	53.98	16.33
46-2-13	筆界	11.15	3.37
46-2-14	筆界	108.16	32.71
46-2-15	筆界	88.60	26.80
46-2-16	筆界	5.60	1.69
	筆合	636.06	192.39

面積 (座標法) 計算書

地番 = 46-2-8
測点名

	[1] X (i)	[2] X (i+1)-X (i-1)	[3] Y (i)	[4] Y (i+1)-Y (i-1)	[2] * [3]	[1] * [4]	方向角	夾角	距離
46-2-2	-149944.048	-2.149	-41234.779	-8.369	88613.540071	1254881.737712	224-03-00	135-10-33	2.815
46-2-1	-149946.071	-23.611	-41236.736	-1.542	973640.573696	231216.841482	178-53-55	134-50-55	21.592
46-2-17	-149967.659	-21.424	-41236.321	8.822	883446.941104	-1323014.687698	88-52-57	89-59-02	8.409
46-2-28	-149967.495	6.270	-41227.914	8.287	-258499.020780	-1242780.631065	358-52-27	89-59-30	6.107
46-2-40	-149961.389	23.573	-41228.034	-0.453	-971868.445482	67932.509217	358-54-28	180-02-01	17.470
46-2-9	-149943.922	17.341	-41228.367	-6.745	-714941.112147	1011371.753890	268-52-27	89-57-59	6.413
合計				倍面積 面積	392.476462 196.23	-392.476462 196.23			62.806

面積 (座標法) 計算書

地番 = 46-2-9
測点名

	[1] X (i)	[2] X (i+1)-X (i-1)	[3] Y (i)	[4] Y (i+1)-Y (i-1)	[2] * [3]	[1] * [4]	方向角	夾角	距離
46-2-9	-149943.922	-17.493	-41228.367	-1.647	721207.823931	246957.639534	178-54-28	89-39-36	17.470
46-2-40	-149961.389	-17.269	-41228.034	10.319	711966.919146	-1547451.573091	88-51-51	89-57-23	9.988
46-2-36	-149961.191	15.665	-41218.048	9.678	-645680.721920	-1451324.406498	358-51-33	89-59-42	15.470
46-2-4	-149945.724	17.434	-41218.356	-2.335	-718600.818504	350123.265540	314-08-22	135-16-49	2.825
46-2-3	-149943.757	1.828	-41220.383	-8.031	-75350.860124	1204198.312467	268-40-26	134-32-04	6.006
46-2-100	-149943.896	-0.165	-41226.387	-7.984	6802.353855	1197152.065664	269-14-52	180-34-26	1.980
合計				倍面積 面積	344.696384 172.34	-344.696384 172.34			53.739

面積 (座標法) 計算書

地番 = 46-2-12
測点名

	[1] X (i)	[2] X (i+1)-X (i-1)	[3] Y (i)	[4] Y (i+1)-Y (i-1)	[2] * [3]	[1] * [4]	方向角	夾角	距離
46-2-37K	-149966.595	5.602	-41217.942	9.880	-230902.911084	-1481669.958600	358-52-35	90-00-44	5.405
46-2-36	-149961.191	5.206	-41218.048	-10.092	-214581.157888	1513408.339572	268-51-51	89-59-16	9.988
46-2-40	-149961.389	-5.602	-41228.034	-9.880	230959.446468	1481618.523320	178-52-35	90-00-44	5.405
46-2-39K	-149966.793	-5.206	-41227.928	10.092	214632.593168	-1513464.874956	88-51-51	89-59-16	9.988
合計				倍面積 面積	107.970664 53.98	-107.970664 53.98			30.786

面積 (座標法) 計算書

地番 = 46-2-13
測点名

	[1] X (i)	[2] X (i+1)-X (i-1)	[3] Y (i)	[4] Y (i+1)-Y (i-1)	[2] * [3]	[1] * [4]	方向角	夾角	距離
46-2-14K	-149967.712	1.315	-41217.920	9.964	-54201.564800	-1494278.282368	358-52-18	90-00-27	1.117
46-2-37K	-149966.595	0.919	-41217.942	-10.008	-37879.288698	1500865.682760	268-51-51	89-59-33	9.988
46-2-39K	-149966.793	-0.900	-41227.928	-9.972	37105.135200	1495468.859796	178-51-27	89-59-36	0.702
46-2-28	-149967.495	-1.117	-41227.914	0.022	46051.579938	-3299.284890	178-53-44	180-02-17	0.415
46-2-26K	-149967.910	-0.217	-41227.906	9.994	8946.455602	-1498779.292540	88-51-51	89-58-07	9.988
合計				倍面積 面積	22.317242 11.15	-22.317242 11.15			22.210

面積 (座標法) 計算書

地番 = 46-2-14

測点名	[1] X (i)	[2] X (i+1)-X (i-1)	[3] Y (i)	[4] Y (i+1)-Y (i-1)	[2] * [3]	[1] * [4]	方向角	夾 角	距 離
46-2-26K	-149967.910	-11.223	-41227.906	-9.767	462700.789038	1464736.576970	178-51-43	89-59-52	11.027
46-2-15	-149978.935	-10.878	-41227.687	8.191	448474.779186	-1228477.456585	88-56-37	90-04-54	7.973
46-2-6	-149978.788	2.210	-41219.715	9.945	-91095.570150	-1491539.046660	43-43-21	134-46-44	2.855
46-2-5	-149976.725	11.076	-41217.742	1.795	-456527.710392	-269208.221375	358-52-07	135-08-46	9.015
46-2-14K	-149967.712	8.815	-41217.920	-10.164	-363335.964800	1524271.824768	268-51-51	89-59-44	9.988
合計				倍面積 面積	216.322882 108.16	-216.322882 108.16			40.858

面積 (座標法) 計算書

地番 = 46-2-15

測点名	[1] X (i)	[2] X (i+1)-X (i-1)	[3] Y (i)	[4] Y (i+1)-Y (i-1)	[2] * [3]	[1] * [4]	方向角	夾 角	距 離
46-2-16K	-149968.325	-8.933	-41236.307	-8.221	368363.930431	1232889.599825	178-47-29	89-54-33	8.771
46-2-8	-149977.094	-10.750	-41236.122	2.213	443288.311500	-331899.309022	134-19-42	135-32-13	2.835
46-2-7	-149979.075	-1.841	-41234.094	8.435	75911.967054	-1265073.497625	88-44-54	134-25-12	6.409
46-2-15	-149978.935	10.914	-41227.687	6.193	-449958.975918	-928819.544455	358-51-44	90-06-50	10.776
46-2-27K	-149968.161	10.610	-41227.901	-8.620	-437428.029610	1292725.547820	268-52-56	90-01-12	8.408
合計				倍面積 面積	177.203457 88.60	-177.203457 88.60			37.199

面積 (座標法) 計算書

地番 = 46-2-16

測点名	[1] X (i)	[2] X (i+1)-X (i-1)	[3] Y (i)	[4] Y (i+1)-Y (i-1)	[2] * [3]	[1] * [4]	方向角	夾 角	距 離
46-2-27K	-149968.161	0.830	-41227.901	8.393	-34219.157830	-1258682.775273	358-52-54	89-59-58	0.666
46-2-28	-149967.495	0.502	-41227.914	-8.420	-20696.412828	1262726.307900	268-52-57	90-00-03	8.409
46-2-17	-149967.659	-0.830	-41236.321	-8.393	34226.146430	1258678.561987	178-47-45	89-54-48	0.666
46-2-16K	-149968.325	-0.502	-41236.307	8.420	20700.626114	-1262733.296500	88-52-56	90-05-11	8.408
合計				倍面積 面積	11.201886 5.60	-11.201886 5.60			18.149