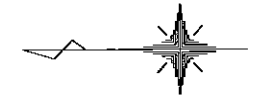
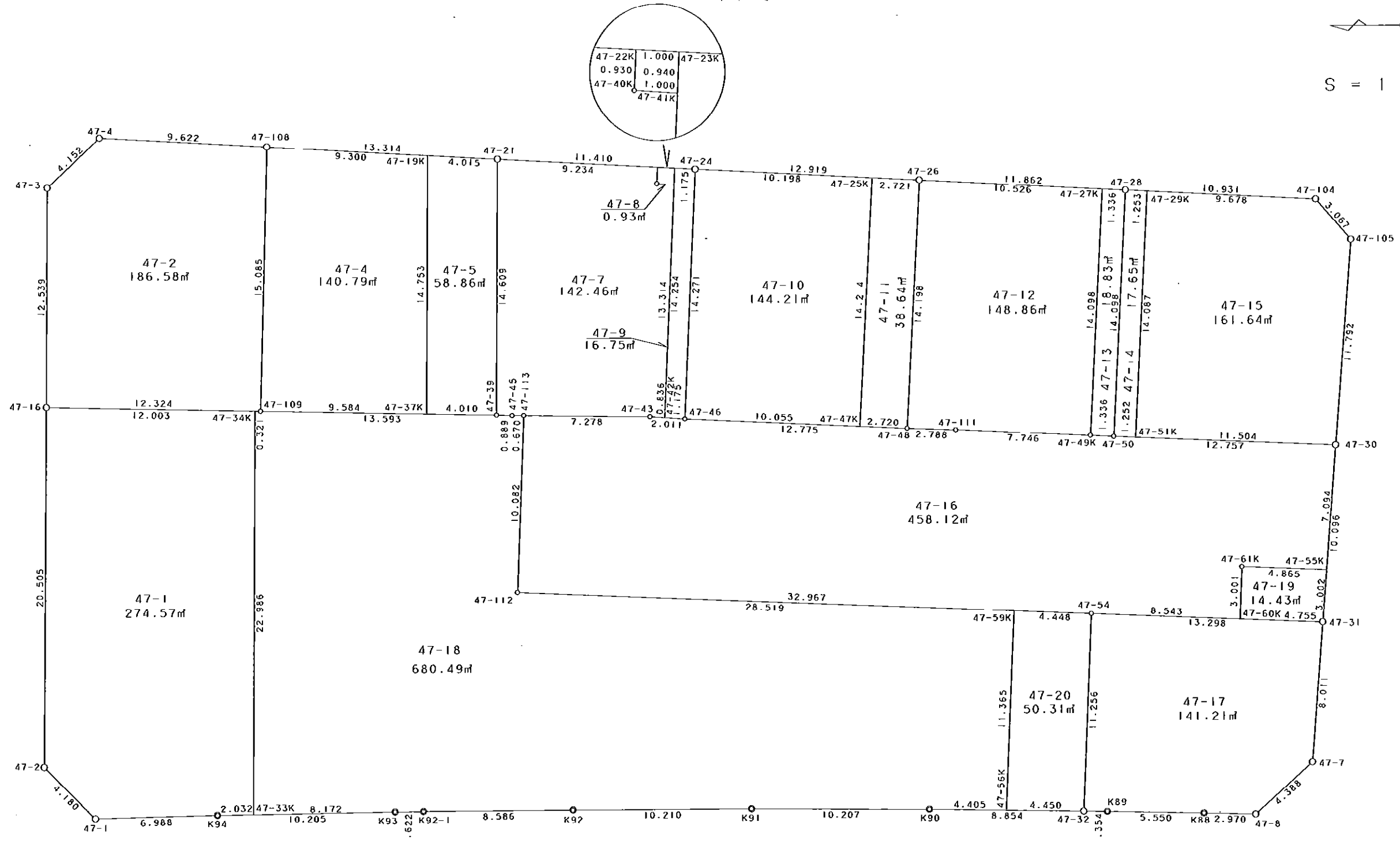


47街区



S = 1 / 250



凡 例

記号	名称
⊙	地区界点
○	街区点
○	画地点(折れ点)
┆	画地点(直線中)

面積 (座標法) 計算書

地番 = 47街区

測点名	[1] X (i)	[2] X (i+1)-X (i-1)	[3] Y (i)	[4] Y (i+1)-Y (i-1)	[2] * [3]	[1] * [4]	方向角	夾 角	距 離
47-2	-149985.515	-2.904	-41362.515	-23.428	120116.743560	3513860.645420	224-22-12	134-08-07	4.180
47-1	-149988.503	-9.973	-41365.438	-2.736	412537.513174	410368.544208	178-27-59	134-05-47	6.988
K94	-149995.488	-17.188	-41365.251	0.366	710985.934188	-54898.348608	178-59-42	180-31-43	10.205
K93	-150005.691	-11.825	-41365.072	0.203	489141.976400	-30451.155273	179-09-08	180-09-26	1.622
K92-1	-150007.313	-10.208	-41365.048	0.082	422254.409984	-12300.599666	179-36-47	180-27-39	8.586
K92	-150015.899	-18.796	-41364.990	0.073	777496.352040	-10951.160627	179-54-57	180-18-10	10.210
K91	-150026.109	-20.417	-41364.975	-0.077	844548.694575	11552.010393	180-30-59	180-36-02	10.207
K90	-150036.316	-19.060	-41365.067	-0.252	788418.177020	37809.151632	181-02-07	180-31-08	8.854
47-32	-150045.169	-10.207	-41365.227	-0.182	422214.871989	27308.220758	180-55-51	179-53-44	1.354
K89	-150046.523	-6.903	-41365.249	-0.146	285544.313847	21906.792358	181-16-49	180-20-58	5.550
K88	-150052.072	-8.518	-41365.373	-0.204	352350.247214	30610.622688	181-32-36	180-15-47	2.970
47-8	-150055.041	-6.229	-41365.453	2.857	257665.406737	-428707.252137	137-59-01	136-26-25	4.388
47-7	-150058.301	-3.887	-41362.516	10.923	160776.099692	-1639086.821823	94-29-21	136-30-20	8.011
47-31	-150058.928	-1.414	-41354.530	18.051	58475.305420	-2708713.709328	94-28-15	179-58-54	10.096
47-30	-150059.715	-1.715	-41344.465	21.820	70905.757475	-3274302.981300	94-30-50	180-02-35	11.792
47-105	-150060.643	1.093	-41332.710	14.062	-45176.652030	-2110152.761866	48-46-50	134-16-00	3.067
47-104	-150058.622	12.936	-41330.403	2.893	-534650.093208	-434119.593446	3-04-23	134-17-33	10.931
47-28	-150047.707	22.760	-41329.817	1.224	-940666.634920	-183658.393368	3-04-59	180-00-36	11.862
47-26	-150035.862	24.745	-41329.179	1.330	-1022690.534355	-199547.696460	3-04-14	179-59-15	12.919
47-24	-150022.962	24.293	-41328.487	1.306	-1003992.934691	-195929.988372	3-05-05	180-00-51	11.410
47-21	-150011.569	24.688	-41327.873	1.333	-1020302.528624	-199965.421477	3-05-44	180-00-39	13.314
47-108	-149998.274	22.903	-41327.154	1.236	-946515.808062	-185397.866664	3-04-48	179-59-04	9.622
47-4	-149988.666	12.643	-41326.637	-2.317	-522492.671591	347523.739122	316-57-41	133-52-53	4.152
47-3	-149985.631	3.067	-41329.471	-15.373	-126757.487557	2305729.105363	270-08-46	133-11-05	12.539
47-16	-149985.599	0.116	-41342.010	-33.044	-4795.673160	4956124.133356	270-14-05	180-05-19	20.505
合計				倍面積 面積	5390.785117 2695.39	-5390.785117 2695.39			215.334

地番	筆種別	面積	坪数
47-1	筆界	274.57	83.05
47-2	筆界	186.58	56.44
47-4	筆界	140.79	42.59
47-5	筆界	58.86	17.80
47-7	筆界	142.46	43.09
47-8	筆界	0.93	0.28
47-9	筆界	16.75	5.06
47-10	筆界	144.21	43.62
47-11	筆界	38.64	11.69
47-12	筆界	148.86	45.03
47-13	筆界	18.83	5.69
47-14	筆界	17.65	5.33
47-15	筆界	161.64	48.89
47-16	筆界	458.12	138.58
47-17	筆界	141.21	42.71
47-18	筆界	680.49	205.84
47-19	筆界	14.43	4.36
47-20	筆界	50.31	15.21
	合計	2695.33	815.26

面積 (座標法) 計算書

地番 = 47-1
測点名

	[1] X (i)	[2] X (i+1)-X (i-1)	[3] Y (i)	[4] Y (i+1)-Y (i-1)	[2]*[3]	[1]*[4]	方向角	夾角	距離
47-34K	-149997.600	11.921	-41342.229	23.205	-492840.711909	-3480694.308000	1-02-44	90-50-46	12.003
47-16	-149985.599	12.085	-41342.010	-20.286	-499618.190850	3042607.861314	270-14-05	89-11-21	20.505
47-2	-149985.515	-2.904	-41362.515	-23.428	120116.743560	3513860.645420	224-22-12	134-08-07	4.180
47-1	-149988.503	-9.973	-41365.438	-2.736	412537.513174	410368.544208	178-27-59	134-05-47	6.988
K94	-149995.488	-9.017	-41365.251	0.223	372990.468267	-33448.993824	178-59-06	180-31-07	2.032
47-33K	-149997.520	-2.112	-41365.215	23.022	87363.334080	-3453242.905440	90-11-58	91-12-52	22.986
合計				倍面積 面積	549.156322 274.57	-549.156322 274.57			68.694

面積 (座標法) 計算書

地番 = 47-2
測点名

	[1] X (i)	[2] X (i+1)-X (i-1)	[3] Y (i)	[4] Y (i+1)-Y (i-1)	[2]*[3]	[1]*[4]	方向角	夾角	距離
47-16	-149985.599	-12.290	-41342.010	-12.764	508093.302900	1914416.185636	181-02-46	90-54-00	12.324
47-109	-149997.921	-12.675	-41342.235	14.856	524012.828625	-2228369.114376	91-20-27	90-17-41	15.085
47-108	-149998.274	9.255	-41327.154	15.598	-382482.810270	-2339673.077852	3-04-48	91-44-21	9.622
47-4	-149988.666	12.643	-41326.637	-2.317	-522492.671591	347523.739122	316-57-41	133-52-53	4.152
47-3	-149985.631	3.067	-41329.471	-15.373	-126757.487557	2305729.105363	270-08-46	133-11-05	12.539
合計				倍面積 面積	373.162107 186.58	-373.162107 186.58			53.722

面積 (座標法) 計算書

地番 = 47-4
測点名

	[1] X (i)	[2] X (i+1)-X (i-1)	[3] Y (i)	[4] Y (i+1)-Y (i-1)	[2]*[3]	[1]*[4]	方向角	夾角	距離
47-19K	-150007.560	9.229	-41327.656	15.255	-381412.937224	-2288365.327800	3-05-40	92-52-23	9.300
47-108	-149998.274	9.639	-41327.154	-14.579	-398352.437406	2186824.836646	271-20-27	88-14-47	15.085
47-109	-149997.921	-9.229	-41342.235	-15.255	381547.486815	2288218.284855	181-02-25	89-41-58	9.584
47-37K	-150007.503	-9.639	-41342.409	14.579	398499.480351	-2186959.386237	90-13-17	89-10-52	14.753
合計				倍面積 面積	281.592536 140.79	-281.592536 140.79			48.722

面積 (座標法) 計算書

地番 = 47-5
測点名

	[1] X (i)	[2] X (i+1)-X (i-1)	[3] Y (i)	[4] Y (i+1)-Y (i-1)	[2]*[3]	[1]*[4]	方向角	夾角	距離
47-37K	-150007.503	-3.952	-41342.409	-14.826	163385.200368	2224011.239478	181-02-35	90-49-18	4.010
47-39	-150011.512	-4.066	-41342.482	14.536	168098.531812	-2180567.338432	90-13-25	89-10-50	14.609
47-21	-150011.569	3.952	-41327.873	14.826	-163327.754096	-2224071.521994	3-05-54	92-52-29	4.015
47-19K	-150007.560	4.066	-41327.656	-14.536	-168038.249296	2180509.892160	270-13-17	87-07-23	14.753
合計				倍面積 面積	117.728788 58.86	-117.728788 58.86			37.387

面積 (座標法) 計算書

地番 = 47-7
測点名

	[1] X (i)	[2] X (i+1)-X (i-1)	[3] Y (i)	[4] Y (i+1)-Y (i-1)	[2]*[3]	[1]*[4]	方向角	夾角	距離
47-41K	-150021.749	0.431	-41329.363	13.366	-17812.955453	-2005190.697134	3-40-09	91-13-42	1.000
47-40K	-150020.751	0.959	-41329.299	0.993	-39634.797741	-148970.605743	92-24-14	268-44-05	0.930
47-22K	-150020.790	9.182	-41328.370	1.426	-379477.093340	-213929.646540	3-05-07	90-40-53	9.234
47-21	-150011.569	9.278	-41327.873	-14.112	-383440.005694	2116963.261728	270-13-25	87-08-18	14.609
47-39	-150011.512	-0.832	-41342.482	-14.636	34396.945024	2195568.489632	181-44-23	91-30-58	0.889
47-45	-150012.401	-1.559	-41342.509	-0.025	64452.971531	3750.310025	179-49-44	178-05-21	0.670
47-113	-150013.071	-7.947	-41342.507	-0.099	328548.903129	14851.294029	180-47-43	180-57-59	7.278
47-43	-150020.348	-8.111	-41342.608	-0.158	335329.893488	23703.214984	183-54-35	183-06-52	0.836
47-42K	-150021.182	-1.401	-41342.665	13.245	57921.073665	-1987030.555590	92-26-27	88-31-52	13.314
合計				倍面積 面積	284.934609 142.46	-284.934609 142.46			48.760

面積 (座標法) 計算書

地番 = 47-8
測点名

	[1] X (i)	[2] X (i+1)-X (i-1)	[3] Y (i)	[4] Y (i+1)-Y (i-1)	[2]*[3]	[1]*[4]	方向角	夾角	距離
47-40K	-150020.751	-0.959	-41329.299	-0.993	39634.797741	148970.605743	183-40-09	91-15-55	1.000
47-41K	-150021.749	-1.038	-41329.363	0.875	42899.878794	-131269.030375	92-26-21	88-46-12	0.940
47-23K	-150021.789	0.959	-41328.424	0.993	-39633.958616	-148971.636477	3-05-39	90-39-18	1.000
47-22K	-150020.790	1.038	-41328.370	-0.875	-42898.848060	131268.191250	272-24-14	89-18-35	0.930
合計				倍面積 面積	1.869859 0.93	-1.869859 0.93			3.870

面積 (座標法) 計算書

地番 = 47-9
測点名

	[1] X (i)	[2] X (i+1)-X (i-1)	[3] Y (i)	[4] Y (i+1)-Y (i-1)	[2]*[3]	[1]*[4]	方向角	夾角	距離
47-42K	-150021.182	-0.565	-41342.665	-14.321	23358.605725	2148453.347422	183-54-18	91-27-52	1.175
47-46	-150022.354	-1.780	-41342.745	14.178	73590.086100	-2127016.935012	92-26-30	88-32-12	14.271
47-24	-150022.962	0.565	-41328.487	14.321	-23350.595155	-2148478.838802	3-04-28	90-37-58	1.175
47-23K	-150021.789	1.780	-41328.424	-14.178	-73564.594720	2127008.924442	272-26-26	89-21-58	14.254
合計				倍面積 面積	33.501950 16.75	-33.501950 16.75			30.875

面積 (座標法) 計算書

地番 = 47-10
測点名

	[1] X (i)	[2] X (i+1)-X (i-1)	[3] Y (i)	[4] Y (i+1)-Y (i-1)	[2]*[3]	[1]*[4]	方向角	夾角	距離
47-25K	-150033.145	9.435	-41329.033	14.740	-389939.426355	-2211488.557300	3-04-09	90-03-09	10.198
47-24	-150022.962	10.791	-41328.487	-13.712	-445975.703217	2057114.854944	272-26-30	89-22-21	14.271
47-46	-150022.354	-9.435	-41342.745	-14.740	390068.799075	2211329.497960	182-44-52	90-18-22	10.055
47-47K	-150032.397	-10.791	-41343.227	13.712	446134.762557	-2057244.227664	93-01-00	90-16-08	14.214
合計				倍面積 面積	288.432060 144.21	-288.432060 144.21			48.738

面積 (座標法) 計算書

地番 = 47-11
測点名

	[1] X (i)	[2] X (i+1)-X (i-1)	[3] Y (i)	[4] Y (i+1)-Y (i-1)	[2] * [3]	[1] * [4]	方向角	夾角	距離
47-47K	-150032.397	-1.969	-41343.227	-14.324	81404.813963	2149064.054628	182-44-22	89-43-22	2.720
47-48	-150035.114	-3.465	-41343.357	14.048	143254.732005	-2107693.281472	93-01-12	90-16-50	14.198
47-26	-150035.862	1.969	-41329.179	14.324	-81377.153451	-2149113.687288	3-04-33	90-03-21	2.721
47-25K	-150033.145	3.465	-41329.033	-14.048	-143205.099345	2107665.620960	273-01-00	89-56-27	14.214
合計				倍面積 面積	77.293172 38.64	-77.293172 38.64			33.853

面積 (座標法) 計算書

地番 = 47-12
測点名

	[1] X (i)	[2] X (i+1)-X (i-1)	[3] Y (i)	[4] Y (i+1)-Y (i-1)	[2] * [3]	[1] * [4]	方向角	夾角	距離
47-27K	-150046.373	9.775	-41329.745	14.645	-403998.257375	-2197429.132585	3-04-56	90-05-23	10.526
47-26	-150035.862	11.259	-41329.179	-13.612	-465325.226361	2042288.153544	273-01-12	89-56-16	14.198
47-48	-150035.114	-2.038	-41343.357	-14.282	84257.761566	2142801.498148	182-08-16	89-07-04	2.788
47-111	-150037.900	-10.523	-41343.461	-0.467	435057.240103	70067.699300	182-41-10	180-32-54	7.746
47-49K	-150045.637	-8.473	-41343.824	13.716	350306.220752	-2058025.957092	92-59-33	90-18-23	14.098
合計				倍面積 面積	297.738685 148.86	-297.738685 148.86			49.356

面積 (座標法) 計算書

地番 = 47-13
測点名

	[1] X (i)	[2] X (i+1)-X (i-1)	[3] Y (i)	[4] Y (i+1)-Y (i-1)	[2] * [3]	[1] * [4]	方向角	夾角	距離
47-49K	-150045.637	-0.598	-41343.824	-14.151	24723.606752	2123295.809187	183-05-22	90-05-49	1.336
47-50	-150046.971	-2.070	-41343.896	14.007	85581.864720	-2101707.922797	92-59-33	89-54-11	14.098
47-28	-150047.707	0.598	-41329.817	14.151	-24715.230566	-2123325.101757	3-05-22	90-05-49	1.336
47-27K	-150046.373	2.070	-41329.745	-14.007	-85552.572150	2101699.546611	272-59-33	89-54-11	14.098
合計				倍面積 面積	37.668756 18.83	-37.668756 18.83			30.868

面積 (座標法) 計算書

地番 = 47-14
測点名

	[1] X (i)	[2] X (i+1)-X (i-1)	[3] Y (i)	[4] Y (i+1)-Y (i-1)	[2] * [3]	[1] * [4]	方向角	夾角	距離
47-29K	-150048.958	0.515	-41329.884	14.135	-21284.890260	-2120942.021330	3-03-56	90-04-15	1.253
47-28	-150047.707	1.987	-41329.817	-14.012	-82122.346379	2102468.470484	272-59-33	89-55-37	14.098
47-50	-150046.971	-0.515	-41343.896	-14.135	21292.106440	2120913.935085	182-33-47	89-34-14	1.252
47-51K	-150048.222	-1.987	-41343.952	14.012	82150.432624	-2102475.686664	92-59-41	90-25-54	14.087
合計				倍面積 面積	35.302425 17.65	-35.302425 17.65			30.690

面積 (座標法) 計算書

地番 = 47-15

測点名	[1] X (i)	[2] X (i+1)-X (i-1)	[3] Y (i)	[4] Y (i+1)-Y (i-1)	[2] * [3]	[1] * [4]	方向角	夾角	距離
47-51K	-150048.222	-10.757	-41343.952	-14.581	444736.891664	2187853.124982	182-33-21	89-33-40	11.504
47-30	-150059.715	-12.421	-41344.465	11.242	513539.599765	-1686971.316030	94-30-50	91-57-29	11.792
47-105	-150060.643	1.093	-41332.710	14.062	-45176.652030	-2110152.761866	48-46-50	134-16-00	3.067
47-104	-150058.622	11.685	-41330.403	2.826	-482945.759055	-424065.665772	3-04-27	134-17-37	9.678
47-29K	-150048.958	10.400	-41329.884	-13.549	-429830.793600	2033013.331942	272-59-41	89-55-14	14.087
合計				倍面積 面積	323.286744 161.64	-323.286744 161.64			50.128

面積 (座標法) 計算書

地番 = 47-16

測点名	[1] X (i)	[2] X (i+1)-X (i-1)	[3] Y (i)	[4] Y (i+1)-Y (i-1)	[2] * [3]	[1] * [4]	方向角	夾角	距離
47-112	-150012.704	-32.570	-41352.582	-11.474	1346853.595740	1721245.765696	182-25-56	90-20-46	32.967
47-54	-150045.641	-41.473	-41353.981	-1.752	1715073.654013	262879.963032	182-22-05	179-56-09	8.543
47-60K	-150054.177	-8.660	-41354.334	2.645	358128.532440	-396893.298165	92-22-06	90-00-01	3.001
47-61K	-150054.301	-4.985	-41351.336	2.797	206136.409960	-419701.879897	182-22-04	269-59-58	4.865
47-55K	-150059.162	-5.414	-41351.537	6.871	223877.221318	-1031056.502102	94-28-16	92-06-12	7.094
47-30	-150059.715	12.191	-41344.465	7.641	-504030.372815	-1146606.282315	2-33-23	88-05-07	12.757
47-50	-150046.971	14.078	-41343.896	0.641	-582039.367888	-96180.108411	3-05-22	180-31-59	1.336
47-49K	-150045.637	9.071	-41343.824	0.435	-375029.827504	-65269.852095	2-41-10	179-35-48	7.746
47-111	-150037.900	10.523	-41343.461	0.467	-435057.240103	-70067.699300	2-08-16	179-27-06	2.788
47-48	-150035.114	15.546	-41343.357	0.716	-642723.827922	-107425.141624	2-44-45	180-36-29	12.775
47-46	-150022.354	14.766	-41342.745	0.749	-610466.972670	-112366.743146	3-54-25	181-09-40	2.011
47-43	-150020.348	9.283	-41342.608	0.238	-383783.430064	-35704.842824	0-47-43	176-53-18	7.278
47-113	-150013.071	7.644	-41342.507	-9.974	-316022.123508	1496230.370154	272-05-10	91-17-27	10.082
合計				倍面積 面積	916.250997 458.12	-916.250997 458.12			113.243

面積 (座標法) 計算書

地番 = 47-17

測点名	[1] X (i)	[2] X (i+1)-X (i-1)	[3] Y (i)	[4] Y (i+1)-Y (i-1)	[2] * [3]	[1] * [4]	方向角	夾角	距離
47-32	-150045.169	-0.882	-41365.227	-11.268	36484.130214	1690708.964292	180-55-51	88-31-39	1.354
K89	-150046.523	-6.903	-41365.249	-0.146	285544.313847	21906.792358	181-16-49	180-20-58	5.550
K88	-150052.072	-8.518	-41365.373	-0.204	352350.247214	30610.622688	181-32-36	180-15-47	2.970
47-8	-150055.041	-6.229	-41365.453	2.857	257665.406737	-428707.252137	137-59-01	136-26-25	4.388
47-7	-150058.301	-3.887	-41362.516	10.923	160776.099692	-1639086.821823	94-29-21	136-30-20	8.011
47-31	-150058.928	12.660	-41354.530	8.535	-523548.349800	-1280752.950480	2-21-58	87-52-37	13.298
47-54	-150045.641	13.759	-41353.981	-10.697	-568989.424579	1605038.221777	272-24-12	90-02-14	11.256
合計				倍面積 面積	282.423325 141.21	-282.423325 141.21			46.827

面積 (座標法) 計算書

地番 = 47-18

測点名	[1] X (i)	[2] X (i+1)-X (i-1)	[3] Y (i)	[4] Y (i+1)-Y (i-1)	[2] * [3]	[1] * [4]	方向角	夾 角	距 離
47-59K	-150041.197	28.016	-41353.792	12.565	-1158567.836672	-1885267.640305	2-25-54	90-01-34	28.519
47-112	-150012.704	28.126	-41352.582	11.285	-1163082.721332	-1692893.364640	92-05-10	269-39-16	10.082
47-113	-150013.071	0.303	-41342.507	10.073	-12526.779621	-1511081.664183	359-49-44	87-44-34	0.670
47-45	-150012.401	1.559	-41342.509	0.025	-64452.971531	-3750.310025	1-44-23	181-54-39	0.889
47-39	-150011.512	14.480	-41342.482	0.274	-598639.139360	-41103.154288	1-02-28	179-18-05	13.593
47-109	-149997.921	13.912	-41342.235	0.253	-575153.173320	-37949.474013	1-04-15	180-01-47	0.321
47-34K	-149997.600	0.401	-41342.229	-22.980	-16578.233829	3446944.848000	270-11-58	89-07-43	22.986
47-33K	-149997.520	-8.091	-41365.215	-22.843	334685.954565	3426393.349360	178-59-51	88-47-53	8.172
K93	-150005.691	-9.793	-41365.072	0.167	405088.150096	-25050.950397	179-09-08	180-09-17	1.622
K92-1	-150007.313	-10.208	-41365.048	0.082	422254.409984	-12300.599666	179-36-47	180-27-39	8.586
K92	-150015.899	-18.796	-41364.990	0.073	777496.352040	-10951.160627	179-54-57	180-18-10	10.210
K91	-150026.109	-20.417	-41364.975	-0.077	844548.694575	11552.010393	180-30-59	180-36-02	10.207
K90	-150036.316	-14.611	-41365.067	-0.172	604384.993937	25806.246352	181-02-26	180-31-27	4.405
47-56K	-150040.720	-4.881	-41365.147	11.275	201903.282507	-1691709.118000	92-24-20	91-21-54	11.365
合計				倍面積 面積	1360.982039 680.49	-1360.982039 680.49			131.627

面積 (座標法) 計算書

地番 = 47-19

測点名	[1] X (i)	[2] X (i+1)-X (i-1)	[3] Y (i)	[4] Y (i+1)-Y (i-1)	[2] * [3]	[1] * [4]	方向角	夾 角	距 離
47-60K	-150054.177	-4.627	-41354.334	-3.194	191346.503418	479273.041338	182-21-45	89-59-39	4.755
47-31	-150058.928	-4.985	-41354.530	2.797	206152.332050	-419714.821616	94-28-14	92-06-29	3.002
47-55K	-150059.162	4.627	-41351.537	3.194	-191333.561699	-479288.963428	2-22-04	87-53-50	4.865
47-61K	-150054.301	4.985	-41351.336	-2.797	-206136.409960	419701.879897	272-22-06	90-00-02	3.001
合計				倍面積 面積	28.863809 14.43	-28.863809 14.43			15.623

面積 (座標法) 計算書

地番 = 47-20

測点名	[1] X (i)	[2] X (i+1)-X (i-1)	[3] Y (i)	[4] Y (i+1)-Y (i-1)	[2] * [3]	[1] * [4]	方向角	夾 角	距 離
47-56K	-150040.720	-3.972	-41365.147	-11.435	164302.363884	1715715.633200	181-01-49	88-37-29	4.450
47-32	-150045.169	-4.921	-41365.227	11.166	203558.282067	-1675404.357054	92-24-12	91-22-23	11.256
47-54	-150045.641	3.972	-41353.981	11.435	-164258.012532	-1715771.904835	2-26-07	90-01-55	4.448
47-59K	-150041.197	4.921	-41353.792	-11.166	-203502.010432	1675360.005702	272-24-20	89-58-13	11.365
合計				倍面積 面積	100.622987 50.31	-100.622987 50.31			31.519