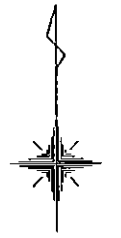
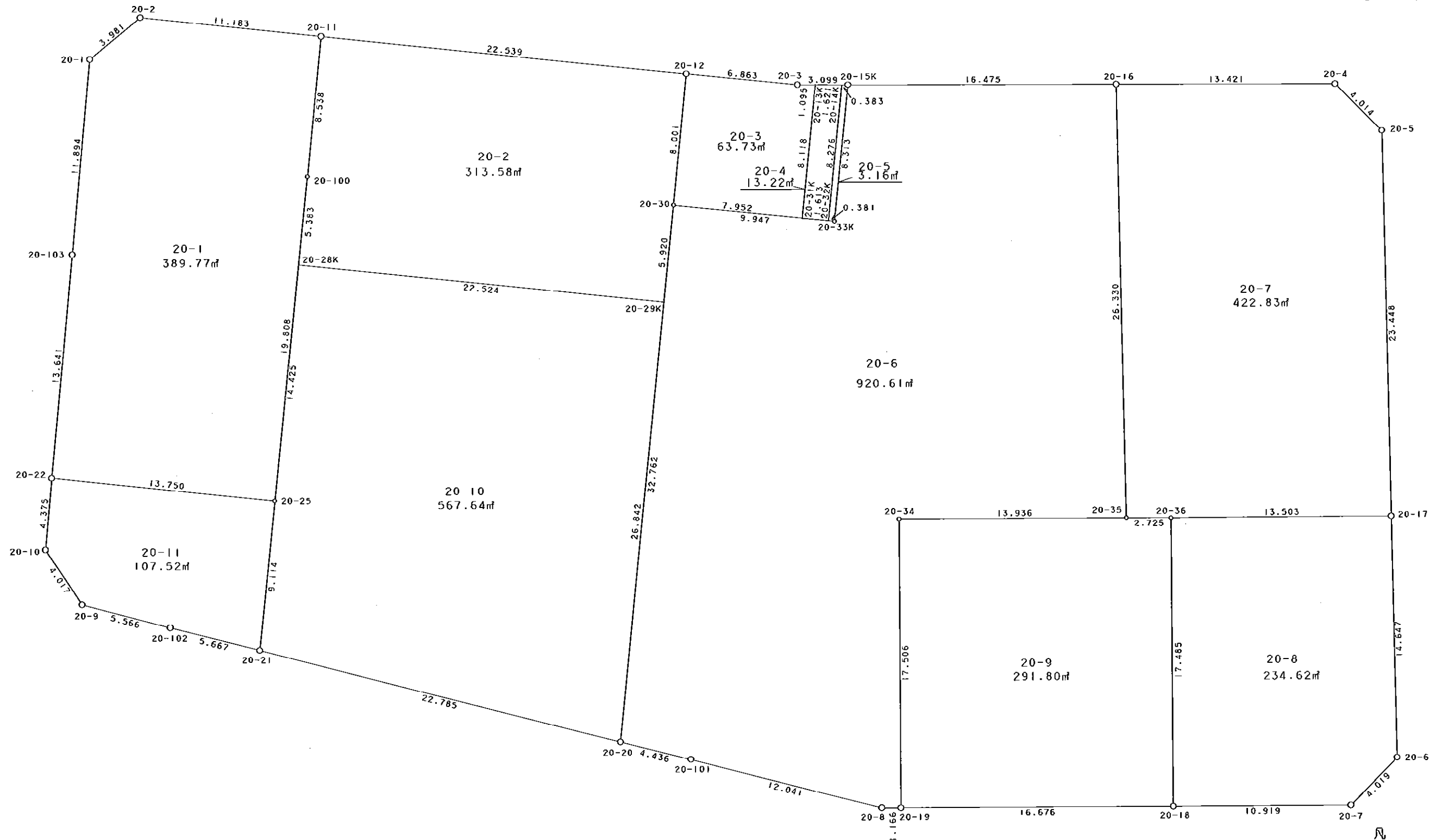


20街区



S = 1 / 250



凡例

記号	名称
⊙	地区界点
○	街区点
○	画地点 (折れ点)
┆	画地点 (直線中)

地番	筆種別	面積	坪数
20-1	筆界	389.77	117.90
20-2	筆界	313.58	94.85
20-3	筆界	63.73	19.28
20-4	筆界	13.22	4.00
20-5	筆界	3.16	0.95
20-6	筆界	920.61	278.48
20-7	筆界	422.83	127.90
20-8	筆界	234.62	70.97
20-9	筆界	291.80	88.26
20-10	筆界	567.64	171.71
20-11	筆界	107.52	32.52
	筆合	3328.48	1006.82

面積 (座標法) 計算書

地番 = 20-1
測点名

	[1] X (i)	[2] X (i+1)-X (i-1)	[3] Y (i)	[4] Y (i+1)-Y (i-1)	[2]*[3]	[1]*[4]	方向角	夾角	距離
20-2	-150001.257	-1.375	-41684.573	-14.208	57316.287875	2131217.859456	230-46-10	134-54-10	3.981
20-1	-150003.775	-14.362	-41687.657	-4.170	598718.129834	625515.741750	185-14-20	134-28-10	11.894
20-103	-150015.619	-25.426	-41688.743	-2.350	1059977.979518	352536.704650	185-19-01	180-04-41	13.641
20-22	-150029.201	-14.980	-41690.007	12.415	624516.304860	-1862612.530415	95-50-07	90-31-06	13.750
20-25	-150030.599	18.306	-41676.328	15.707	-762926.860368	-2356530.618493	5-52-35	90-02-28	19.808
20-100	-150010.895	28.199	-41674.300	2.879	-1175173.585700	-431881.366705	5-43-14	179-50-39	8.538
20-11	-150002.400	9.638	-41673.449	-10.273	-401648.701462	1540974.655200	275-52-00	90-08-46	11.183
合計				倍面積 面積	779.554557 389.77	-779.554557 389.77			82.795

面積 (座標法) 計算書

地番 = 20-2
測点名

	[1] X (i)	[2] X (i+1)-X (i-1)	[3] Y (i)	[4] Y (i+1)-Y (i-1)	[2]*[3]	[1]*[4]	方向角	夾角	距離
20-29K	-150018.541	3.598	-41652.444	23.009	-149865.493512	-3451776.609869	5-50-12	89-59-56	5.920
20-30	-150012.652	13.848	-41651.842	1.417	-576794.708016	-212567.927884	5-50-48	180-00-36	8.001
20-12	-150004.693	10.252	-41651.027	-21.607	-427006.328804	3241151.401651	275-50-21	89-59-33	22.539
20-11	-150002.400	-6.202	-41673.449	-23.273	258458.730698	3491005.855200	185-43-14	89-52-53	8.538
20-100	-150010.895	-13.850	-41674.300	-1.402	577189.055000	210315.274790	185-52-29	180-09-15	5.383
20-28K	-150016.250	-7.646	-41674.851	21.856	318645.910746	-3278755.160000	95-50-16	89-57-47	22.524
合計				倍面積 面積	627.166112 313.58	-627.166112 313.58			72.905

面積 (座標法) 計算書

地番 = 20-3
測点名

	[1] X (i)	[2] X (i+1)-X (i-1)	[3] Y (i)	[4] Y (i+1)-Y (i-1)	[2]*[3]	[1]*[4]	方向角	夾角	距離
20-13K	-150005.387	8.082	-41643.104	-0.268	-336559.566528	40201.443716	270-18-50	84-28-01	1.095
20-3	-150005.381	0.694	-41644.199	-7.923	-28901.074106	1188492.633663	275-45-14	185-26-24	6.863
20-12	-150004.693	-7.271	-41651.027	-7.643	302844.617317	1146485.868599	185-50-48	90-05-34	8.001
20-30	-150012.652	-8.770	-41651.842	7.096	365286.654340	-1064489.778592	95-51-12	90-00-24	7.952
20-31K	-150013.463	7.265	-41643.931	8.738	-302543.158715	-1310817.639694	5-50-49	89-59-37	8.118
合計				倍面積 面積	127.472308 63.73	-127.472308 63.73			32.029

面積 (座標法) 計算書

地番 = 20-4
測点名

	[1] X (i)	[2] X (i+1)-X (i-1)	[3] Y (i)	[4] Y (i+1)-Y (i-1)	[2]*[3]	[1]*[4]	方向角	夾角	距離
20-14K	-150005.395	8.241	-41641.483	-0.778	-343167.461403	116704.197310	270-16-58	84-26-11	1.621
20-13K	-150005.387	-8.068	-41643.104	-2.448	335976.563072	367213.187376	185-50-49	95-33-51	8.118
20-31K	-150013.463	-8.241	-41643.931	0.778	343187.635371	-116710.474214	95-52-11	90-01-22	1.613
20-32K	-150013.628	8.068	-41642.326	2.448	-335970.286168	-367233.361344	5-50-47	89-58-36	8.276
合計				倍面積 面積	26.450872 13.22	-26.450872 13.22			19.628

面積 (座標法) 計算書

地番 = 20-5
測点名

	[1] X (i)	[2] X (i+1)-X (i-1)	[3] Y (i)	[4] Y (i+1)-Y (i-1)	[2] * [3]	[1] * [4]	方向角	夾角	距離
20-15K	-150005.397	8.272	-41641.100	0.464	-344455.179200	-69602.504208	270-17-57	84-27-05	0.383
20-14K	-150005.395	-8.231	-41641.483	-1.226	342751.046573	183906.614270	185-50-47	95-32-50	8.276
20-32K	-150013.628	-8.272	-41642.326	-0.464	344465.320672	69606.323392	95-52-31	90-01-44	0.381
20-33K	-150013.667	8.231	-41641.947	1.226	-342754.865757	-183916.755742	5-50-52	89-58-21	8.313
合計				倍面積 面積	6.322288 3.16	-6.322288 3.16			17.353

面積 (座標法) 計算書

地番 = 20-6
測点名

	[1] X (i)	[2] X (i+1)-X (i-1)	[3] Y (i)	[4] Y (i+1)-Y (i-1)	[2] * [3]	[1] * [4]	方向角	夾角	距離
20-15K	-150005.397	-8.246	-41641.100	-17.322	343372.510600	2598393.486834	185-50-52	95-45-52	8.313
20-33K	-150013.667	-7.255	-41641.947	-10.742	302112.325485	1611446.810914	275-51-24	270-00-32	9.947
20-30	-150012.652	-31.577	-41651.842	-13.224	1315240.214834	1983767.310048	185-49-55	89-58-31	32.762
20-20	-150045.244	-33.667	-41655.171	0.975	1402404.642057	-146294.112900	104-01-25	98-11-30	4.436
20-101	-150046.319	-4.031	-41650.867	15.977	167894.644877	-2397290.038663	104-12-38	180-11-13	12.041
20-8	-150049.275	-2.960	-41639.194	12.839	123252.014240	-1926482.641725	90-11-48	165-59-10	1.166
20-19	-150049.279	17.502	-41638.028	1.132	-728748.766056	-169855.783828	359-53-19	89-41-31	17.506
20-34	-150031.773	17.533	-41638.062	13.902	-730040.141046	-2085741.708246	89-53-20	270-00-01	13.936
20-35	-150031.746	26.352	-41624.126	13.437	-1096878.968352	-2015976.571002	358-54-51	89-01-31	26.330
20-16	-150005.421	26.349	-41624.625	-16.974	-1096767.244125	2546192.016054	270-05-00	91-10-09	16.475
合計				倍面積 面積	1841.232514 920.61	-1841.232514 920.61			142.912

面積 (座標法) 計算書

地番 = 20-7
測点名

	[1] X (i)	[2] X (i+1)-X (i-1)	[3] Y (i)	[4] Y (i+1)-Y (i-1)	[2] * [3]	[1] * [4]	方向角	夾角	距離
20-16	-150005.421	-26.298	-41624.625	-12.922	1094644.388250	1938370.050162	178-54-51	88-47-56	26.330
20-35	-150031.746	-26.345	-41624.126	3.224	1096587.599470	-483702.349104	90-25-14	91-30-23	2.725
20-36	-150031.766	0.031	-41621.401	16.228	-1290.263431	-2434715.498648	89-47-01	179-21-47	13.503
20-17	-150031.715	23.495	-41607.898	13.050	-977577.563510	-1957913.880750	358-53-35	89-06-34	23.448
20-5	-150008.271	26.267	-41608.351	-3.306	-1092926.555717	495927.343926	314-41-50	135-48-15	4.014
20-4	-150005.448	2.850	-41611.204	-16.274	-118591.931400	2441188.660752	270-06-55	135-25-05	13.421
合計				倍面積 面積	845.673662 422.83	-845.673662 422.83			83.441

面積 (座標法) 計算書

地番 = 20-8
測点名

	[1] X (i)	[2] X (i+1)-X (i-1)	[3] Y (i)	[4] Y (i+1)-Y (i-1)	[2] * [3]	[1] * [4]	方向角	夾角	距離
20-36	-150031.766	-17.536	-41621.401	-13.454	729872.887936	2018527.379764	179-50-22	90-03-21	17.485
20-18	-150049.251	-17.468	-41621.352	10.968	727041.776736	-1645740.184968	89-54-39	90-04-17	10.919
20-7	-150049.234	2.892	-41610.433	13.727	-120337.372236	-2059725.835118	44-19-28	134-24-49	4.019
20-6	-150046.359	17.519	-41607.625	2.535	-728923.982375	-380367.520065	358-55-55	134-36-27	14.647
20-17	-150031.715	14.593	-41607.898	-13.776	-607184.055514	2066836.905840	269-47-01	90-51-06	13.503
合計				倍面積 面積	469.254547 234.62	-469.254547 234.62			60.573

面積 (座標法) 計算書

地番 = 20-9
測点名

	[1] X (i)	[2] X (i+1)-X (i-1)	[3] Y (i)	[4] Y (i+1)-Y (i-1)	[2] * [3]	[1] * [4]	方向角	夾角	距離
20-34	-150031.773	-17.533	-41638.062	-13.902	730040.141046	2085741.708246	179-53-19	89-59-59	17.506
20-19	-150049.279	-17.478	-41638.028	16.710	727749.453384	-2507323.452090	89-54-14	90-00-55	16.676
20-18	-150049.251	17.513	-41621.352	16.627	-728914.737576	-2494868.896377	359-50-22	89-56-08	17.485
20-36	-150031.766	17.505	-41621.401	-2.774	-728582.624505	416188.118884	270-25-14	90-34-52	2.725
20-35	-150031.746	-0.007	-41624.126	-16.661	291.368882	2499678.920106	269-53-20	179-28-06	13.936
合計				倍面積 面積	583.601231 291.80	-583.601231 291.80			68.328

面積 (座標法) 計算書

地番 = 20-10
測点名

	[1] X (i)	[2] X (i+1)-X (i-1)	[3] Y (i)	[4] Y (i+1)-Y (i-1)	[2] * [3]	[1] * [4]	方向角	夾角	距離
20-28K	-150016.250	-12.058	-41674.851	-23.884	502515.353358	3582988.115000	185-52-37	90-02-21	14.425
20-25	-150030.599	-23.415	-41676.328	-2.411	975851.220120	361723.774189	185-52-55	180-00-18	9.114
20-21	-150039.665	-14.645	-41677.262	21.157	610363.501990	-3174389.192405	104-10-24	98-17-29	22.785
20-20	-150045.244	21.124	-41655.171	24.818	-879923.832204	-3723822.865592	5-49-52	81-39-28	26.842
20-29K	-150018.541	28.994	-41652.444	-19.680	-1207670.961336	2952364.886880	275-50-16	90-00-24	22.524
合計				倍面積 面積	1135.281928 567.64	-1135.281928 567.64			95.690

面積 (座標法) 計算書

地番 = 20-11
測点名

	[1] X (i)	[2] X (i+1)-X (i-1)	[3] Y (i)	[4] Y (i+1)-Y (i-1)	[2] * [3]	[1] * [4]	方向角	夾角	距離
20-22	-150029.201	-2.960	-41690.007	-14.063	123402.420720	2109860.653663	185-02-08	89-12-01	4.375
20-10	-150033.559	-7.690	-41690.391	1.860	320599.106790	-279062.419740	146-02-27	141-00-19	4.017
20-9	-150036.891	-4.718	-41688.147	7.635	196684.677546	-1145531.662785	104-25-06	138-22-39	5.566
20-102	-150038.277	-2.774	-41682.756	10.885	115627.965144	-1633166.645145	104-10-43	179-45-37	5.667
20-21	-150039.665	7.678	-41677.262	6.428	-319998.017636	-964454.966620	5-52-55	81-42-12	9.114
20-25	-150030.599	10.464	-41676.328	-12.745	-436101.096192	1912139.984255	275-50-07	89-57-12	13.750
合計				倍面積 面積	215.056372 107.52	-215.056372 107.52			42.489