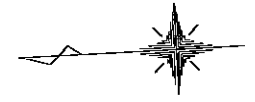
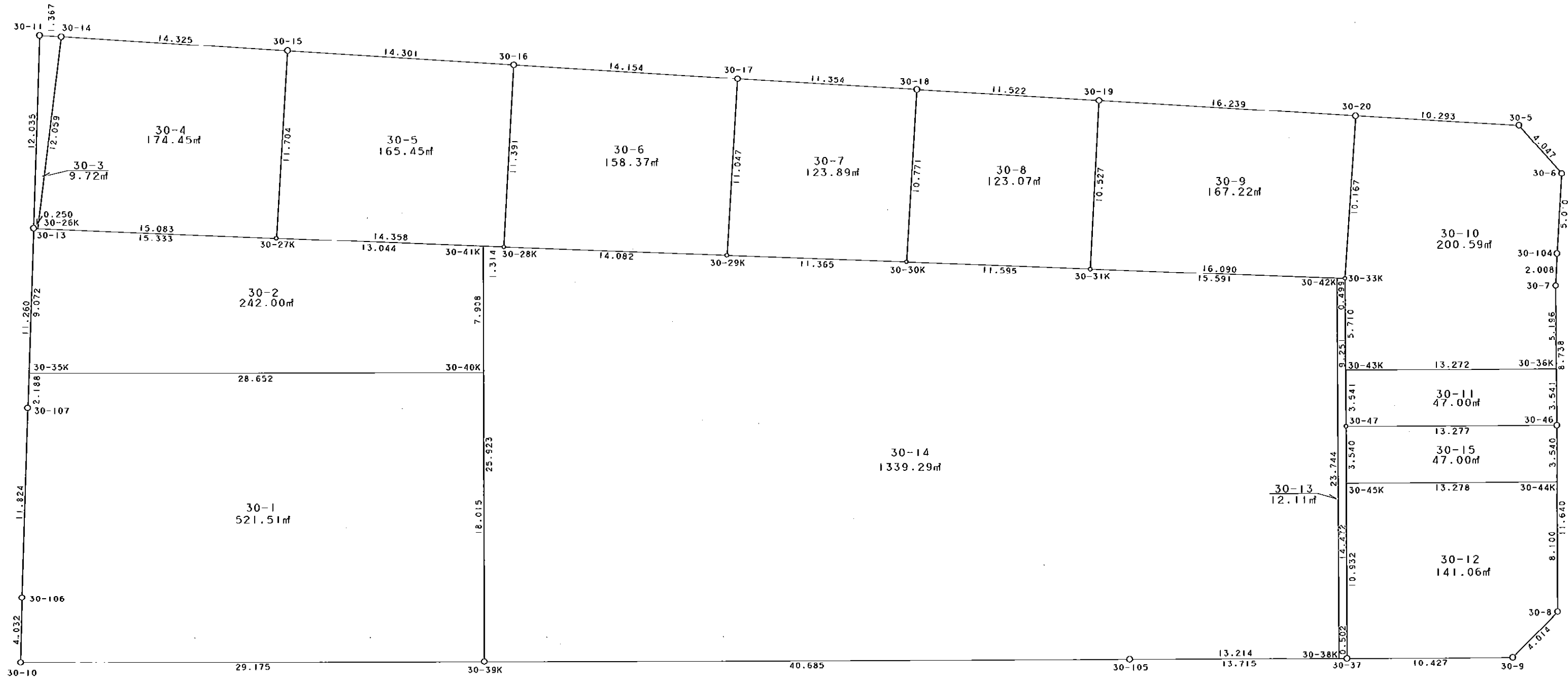


西部第5地区土地区画整理事業 出来形確認測量 (原子図)

30街区



S = 1 / 250



凡 例

記号	名称
⊙	地区界点
○	街区点
○	画地点 (折点)
┌	画地点 (直線中)

地番	筆種別	面積	坪数
30-1	筆界	521.51	157.75
30-2	筆界	242.00	73.20
30-3	筆界	9.72	2.94
30-4	筆界	174.45	52.77
30-5	筆界	165.45	50.04
30-6	筆界	158.37	47.90
30-7	筆界	123.89	37.47
30-8	筆界	123.07	37.22
30-9	筆界	167.22	50.58
30-10	筆界	200.59	60.67
30-11	筆界	47.00	14.21
30-12	筆界	141.06	42.67
30-13	筆界	12.11	3.66
30-14	筆界	1339.29	405.13
30-15	筆界	47.00	14.21
	合計	3472.73	1050.42

面積 (座標法) 計算書

地番 = 30-1
測点名

	[1] X (i)	[2] X (i+1)-X (i-1)	[3] Y (i)	[4] Y (i+1)-Y (i-1)	[2] * [3]	[1] * [4]	方向角	夾角	距離
30-35K	-150033.998	28.796	-41768.141	-0.817	-1202755.388236	122577.776366	274-36-49	91-53-06	2.188
30-107	-150033.822	1.105	-41770.322	-13.968	-46156.205810	2095672.425696	274-30-23	179-53-34	11.824
30-106	-150032.893	1.204	-41782.109	-15.810	-50305.659236	2372020.038330	273-54-38	179-24-15	4.032
30-10	-150032.618	-28.868	-41786.132	-5.391	1206282.058576	808825.843638	182-41-15	88-46-37	29.175
30-39K	-150061.761	-30.000	-41787.500	16.627	1253625.000000	-2495076.900147	92-43-36	90-02-21	18.015
30-40K	-150062.618	27.763	-41769.505	19.359	-1159646.767315	-2905062.221862	2-43-43	90-00-07	28.652
合計				倍面積 面積	1043.037979 521.51	-1043.037979 521.51			93.886

面積 (座標法) 計算書

地番 = 30-2
測点名

	[1] X (i)	[2] X (i+1)-X (i-1)	[3] Y (i)	[4] Y (i+1)-Y (i-1)	[2] * [3]	[1] * [4]	方向角	夾角	距離
30-40K	-150062.618	-28.998	-41769.505	6.535	1211232.105990	-980659.208630	92-44-23	90-00-40	7.908
30-41K	-150062.996	12.615	-41761.606	9.052	-526822.659690	-1358370.239792	5-04-16	92-19-53	13.044
30-27K	-150050.003	28.266	-41760.453	2.507	-1180400.964498	-376175.357521	5-03-58	179-59-42	15.333
30-13	-150034.730	16.005	-41759.099	-7.688	-668354.379495	1153467.004240	274-37-42	89-33-44	9.072
30-35K	-150033.998	-27.888	-41768.141	-10.406	1164829.916208	1561253.783188	182-43-43	88-06-01	28.652
合計				倍面積 面積	484.018515 242.00	-484.018515 242.00			74.009

面積 (座標法) 計算書

地番 = 30-3
測点名

	[1] X (i)	[2] X (i+1)-X (i-1)	[3] Y (i)	[4] Y (i+1)-Y (i-1)	[2] * [3]	[1] * [4]	方向角	夾角	距離
30-14	-150037.050	-0.711	-41747.241	12.019	29682.288351	-1803295.303950	5-50-09	85-56-49	1.367
30-11	-150035.690	2.320	-41747.102	-11.858	-96853.276640	1779123.212020	274-34-30	88-44-21	12.035
30-13	-150034.730	0.711	-41759.099	-12.019	-29690.719389	1803267.419870	185-02-57	90-28-27	0.250
30-26K	-150034.979	-2.320	-41759.121	11.858	96881.160720	-1779114.780982	99-53-20	94-50-23	12.059
合計				倍面積 面積	19.453042 9.72	-19.453042 9.72			25.711

面積 (座標法) 計算書

地番 = 30-4
測点名

	[1] X (i)	[2] X (i+1)-X (i-1)	[3] Y (i)	[4] Y (i+1)-Y (i-1)	[2] * [3]	[1] * [4]	方向角	夾角	距離
30-14	-150037.050	16.309	-41747.241	-10.301	-680855.753469	1545531.652050	279-53-20	93-33-38	12.059
30-26K	-150034.979	-12.953	-41759.121	-13.212	540905.894313	1982262.142548	185-03-59	85-10-39	15.083
30-27K	-150050.003	-16.309	-41760.453	10.301	681071.227977	-1545665.080903	96-18-12	91-14-13	11.704
30-15	-150051.288	12.953	-41748.820	13.212	-540772.465460	-1982477.617056	6-19-42	90-01-30	14.325
合計				倍面積 面積	348.903361 174.45	-348.903361 174.45			53.171

面積 (座標法) 計算書

地番 = 30-5
測点名

	[1] X (i)	[2] X (i+1)-X (i-1)	[3] Y (i)	[4] Y (i+1)-Y (i-1)	[2] * [3]	[1] * [4]	方向角	夾角	距離
30-27K	-150050.003	-13.017	-41760.453	-12.902	543595.816701	1935945.138706	185-04-14	88-46-02	14.358
30-28K	-150064.305	-15.499	-41761.722	10.059	647264.929278	-1509496.843995	96-01-55	90-57-41	11.391
30-16	-150065.502	13.017	-41750.394	12.902	-543464.878698	-1936145.106804	6-19-08	90-17-13	14.301
30-15	-150051.288	15.499	-41748.820	-10.059	-647064.961180	1509365.905992	276-18-12	89-59-04	11.704
合計				倍面積 面積	330.906101 165.45	-330.906101 165.45			51.754

面積 (座標法) 計算書

地番 = 30-6
測点名

	[1] X (i)	[2] X (i+1)-X (i-1)	[3] Y (i)	[4] Y (i+1)-Y (i-1)	[2] * [3]	[1] * [4]	方向角	夾角	距離
30-28K	-150064.305	-12.832	-41761.722	-12.545	535886.416704	1882556.706225	184-57-29	88-55-34	14.082
30-29K	-150078.334	-15.264	-41762.939	9.761	637469.500896	-1464914.618174	96-25-07	91-27-38	11.047
30-17	-150079.569	12.832	-41751.961	12.545	-535761.163552	-1882748.193105	6-21-23	89-56-16	14.154
30-16	-150065.502	15.264	-41750.394	-9.761	-637278.014016	1464789.365022	276-01-55	89-40-32	11.391
合計				倍面積 面積	316.740032 158.37	-316.740032 158.37			50.674

面積 (座標法) 計算書

地番 = 30-7
測点名

	[1] X (i)	[2] X (i+1)-X (i-1)	[3] Y (i)	[4] Y (i+1)-Y (i-1)	[2] * [3]	[1] * [4]	方向角	夾角	距離
30-29K	-150078.334	-10.087	-41762.939	-11.962	421262.765693	1795237.031308	184-58-02	88-32-55	11.365
30-30K	-150089.656	-12.519	-41763.923	9.720	522842.552037	-1458871.456320	96-22-51	91-24-49	10.771
30-18	-150090.853	10.087	-41753.219	11.962	-421164.720053	-1795386.783586	6-21-41	89-58-50	11.354
30-17	-150079.569	12.519	-41751.961	-9.720	-522692.799759	1458773.410680	276-25-07	90-03-26	11.047
合計				倍面積 面積	247.797918 123.89	-247.797918 123.89			44.537

面積 (座標法) 計算書

地番 = 30-8
測点名

	[1] X (i)	[2] X (i+1)-X (i-1)	[3] Y (i)	[4] Y (i+1)-Y (i-1)	[2] * [3]	[1] * [4]	方向角	夾角	距離
30-30K	-150089.656	-10.351	-41763.923	-11.747	432298.366973	1763103.189032	185-09-39	88-46-48	11.595
30-31K	-150101.204	-12.648	-41764.966	9.426	528243.289968	-1414853.948904	95-59-53	90-50-14	10.527
30-19	-150102.304	10.351	-41754.497	11.747	-432200.798447	-1763251.765088	6-22-06	90-22-13	11.522
30-18	-150090.853	12.648	-41753.219	-9.426	-528094.713912	1414756.380378	276-22-51	90-00-45	10.771
合計				倍面積 面積	246.144582 123.07	-246.144582 123.07			44.415

面積 (座標法) 計算書

地番 = 30-9

測点名	[1] X (i)	[2] X (i+1)-X (i-1)	[3] Y (i)	[4] Y (i+1)-Y (i-1)	[2] * [3]	[1] * [4]	方向角	夾角	距離
30-31K	-150101.204	-14.925	-41764.966	-11.909	623342.117550	1787555.238436	185-08-05	89-08-12	16.090
30-33K	-150117.229	-17.237	-41766.406	8.655	719927.540222	-1299264.616995	96-50-46	91-42-41	10.167
30-20	-150118.441	14.925	-41756.311	11.909	-623212.941675	-1787760.513869	6-24-50	89-34-04	16.239
30-19	-150102.304	17.237	-41754.497	-8.655	-719722.264789	1299135.441120	275-59-53	89-35-03	10.527
合計				倍面積 面積	334.451308 167.22	-334.451308 167.22			53.023

面積 (座標法) 計算書

地番 = 30-10

測点名	[1] X (i)	[2] X (i+1)-X (i-1)	[3] Y (i)	[4] Y (i+1)-Y (i-1)	[2] * [3]	[1] * [4]	方向角	夾角	距離
30-36K	-150130.226	-13.486	-41772.756	4.545	563347.387416	-682341.877170	92-32-13	89-44-49	5.196
30-7	-150130.456	-0.425	-41767.565	7.190	17751.215125	-1079437.978640	95-34-17	183-02-04	2.008
30-104	-150130.651	-0.763	-41765.566	6.977	31867.126858	-1047461.552027	96-30-34	180-56-17	5.010
30-6	-150131.219	1.979	-41760.588	8.123	-82644.203652	-1219515.891937	50-59-51	134-29-17	4.047
30-5	-150128.672	12.778	-41757.443	4.277	-533576.606654	-642100.330144	6-18-50	135-18-59	10.293
30-20	-150118.441	11.443	-41756.311	-8.963	-477817.466773	1345511.586683	276-50-46	90-31-56	10.167
30-33K	-150117.229	1.471	-41766.406	-15.799	-61438.383226	2371702.100971	272-35-59	175-45-13	5.710
30-43K	-150116.970	-12.997	-41772.110	-6.350	542912.113670	953242.759500	182-47-24	90-11-25	13.272
合計				倍面積 面積	401.182764 200.59	-401.182764 200.59			55.703

面積 (座標法) 計算書

地番 = 30-11

測点名	[1] X (i)	[2] X (i+1)-X (i-1)	[3] Y (i)	[4] Y (i+1)-Y (i-1)	[2] * [3]	[1] * [4]	方向角	夾角	距離
30-43K	-150116.970	13.417	-41772.110	-2.891	-560456.399870	433988.160270	272-36-22	89-48-58	3.541
30-47	-150116.809	-13.100	-41775.647	-4.184	547260.975700	628088.728856	182-47-36	90-11-14	13.277
30-46	-150130.070	-13.417	-41776.294	2.891	560512.536598	-434026.032370	92-31-29	89-43-53	3.541
30-36K	-150130.226	13.100	-41772.756	4.184	-547223.103600	-628144.865584	2-47-24	90-15-55	13.272
合計				倍面積 面積	94.008828 47.00	-94.008828 47.00			33.631

面積 (座標法) 計算書

地番 = 30-12

測点名	[1] X (i)	[2] X (i+1)-X (i-1)	[3] Y (i)	[4] Y (i+1)-Y (i-1)	[2] * [3]	[1] * [4]	方向角	夾角	距離
30-45K	-150116.635	13.798	-41779.183	-10.272	-576469.167034	1541998.074720	272-48-37	90-01-02	10.932
30-37	-150116.099	-9.879	-41790.102	-11.418	412844.417658	1714025.618382	182-44-35	89-55-58	10.427
30-9	-150126.514	-13.403	-41790.601	2.182	560119.425203	-327576.053548	138-05-59	135-21-24	4.014
30-8	-150129.502	-3.383	-41787.920	10.771	141368.533360	-1617044.866042	92-47-43	134-41-44	8.100
30-44K	-150129.897	12.867	-41779.830	8.737	-537581.072610	-1311684.910089	2-47-35	89-59-52	13.278
合計				倍面積 面積	282.136577 141.06	-282.136577 141.06			46.751

面積 (座標法) 計算書

地番 = 30-13

測点名	[1] X (i)	[2] X (i+1)-X (i-1)	[3] Y (i)	[4] Y (i+1)-Y (i-1)	[2] * [3]	[1] * [4]	方向角	夾角	距離
30-38K	-150115.598	0.633	-41790.078	-23.741	-26453.119374	3563894.412118	182-44-33	90-00-18	0.502
30-37	-150116.099	-1.211	-41790.102	14.431	50607.813522	-2166325.424669	92-48-43	90-04-10	14.472
30-47	-150116.809	-1.130	-41775.647	23.696	47206.481110	-3557167.906064	92-36-08	179-47-25	9.251
30-33K	-150117.229	0.077	-41766.406	9.286	-3216.013262	-1393988.588494	5-10-25	92-34-17	0.499
30-42K	-150116.732	1.631	-41766.361	-23.672	-68120.934791	3553563.279904	272-44-15	87-33-50	23.744
合計					24.227205	-24.227205			48.468
				倍面積 面積	12.11	12.11			

面積 (座標法) 計算書

地番 = 30-14

測点名	[1] X (i)	[2] X (i+1)-X (i-1)	[3] Y (i)	[4] Y (i+1)-Y (i-1)	[2] * [3]	[1] * [4]	方向角	夾角	距離
30-42K	-150116.732	14.394	-41766.361	25.112	-601185.000234	-3769731.373984	5-08-01	92-23-46	15.591
30-31K	-150101.204	27.076	-41764.966	2.438	-1130828.219416	-365946.735352	5-09-39	180-01-38	11.595
30-30K	-150089.656	22.870	-41763.923	2.027	-955140.919010	-304231.732712	4-58-02	179-48-23	11.365
30-29K	-150078.334	25.351	-41762.939	2.201	-1058732.266589	-330322.413134	4-57-29	179-59-27	14.082
30-28K	-150064.305	15.338	-41761.722	1.333	-640541.292036	-200035.718565	5-03-51	180-06-22	1.314
30-41K	-150062.996	2.544	-41761.606	-25.778	-106241.525664	3868323.910888	272-43-50	87-39-59	25.923
30-39K	-150061.761	-39.404	-41787.500	-27.828	1646594.650000	4175918.685108	182-43-29	89-59-39	40.685
30-105	-150102.400	-53.837	-41789.434	-2.578	2249817.758258	386963.987200	182-47-37	180-04-08	13.214
30-38K	-150115.598	-14.332	-41790.078	23.073	598935.397896	-3463617.192654	92-44-15	89-56-38	23.744
合計					2678.583205	-2678.583205			157.513
				倍面積 面積	1339.29	1339.29			

面積 (座標法) 計算書

地番 = 30-15

測点名	[1] X (i)	[2] X (i+1)-X (i-1)	[3] Y (i)	[4] Y (i+1)-Y (i-1)	[2] * [3]	[1] * [4]	方向角	夾角	距離
30-44K	-150129.897	-13.435	-41779.830	2.889	561312.016050	-433725.272433	92-48-04	90-00-29	3.540
30-46	-150130.070	13.088	-41776.294	4.183	-546768.135872	-627994.082810	2-47-36	89-59-32	13.277
30-47	-150116.809	13.435	-41775.647	-2.889	-561255.817445	433687.461201	272-49-02	90-01-26	3.540
30-45K	-150116.635	-13.088	-41779.183	-4.183	546805.947104	627937.884205	182-47-35	89-58-33	13.278
合計					94.009837	-94.009837			33.635
				倍面積 面積	47.00	47.00			