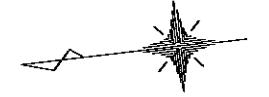
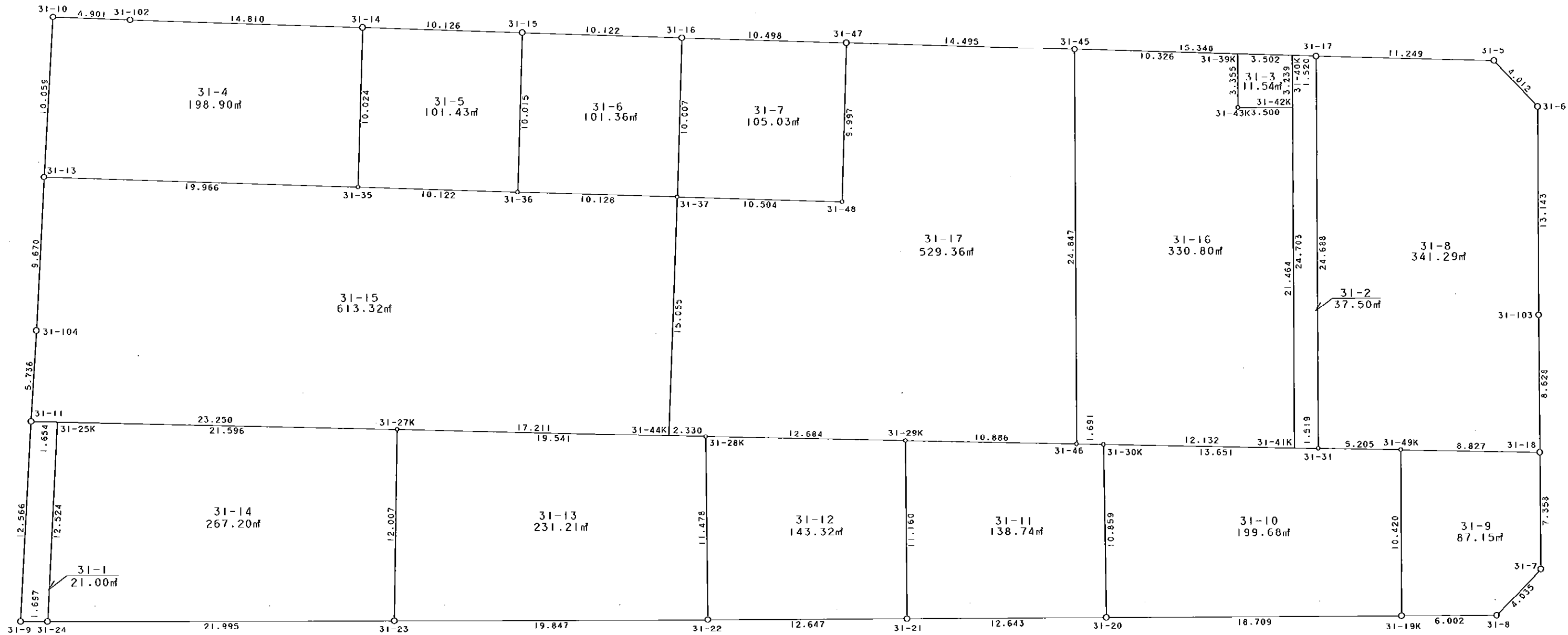


31街区



S = 1 / 250



凡 例

記号	名称
⊙	地区界点
○	街区点
○	画地点 (折れ点)
┆	画地点 (直線中)

地番	筆種別	面積	坪数
31-1	筆界	21.00	6.35
31-2	筆界	37.50	11.34
31-3	筆界	11.54	3.49
31-4	筆界	198.90	60.16
31-5	筆界	101.43	30.68
31-6	筆界	101.36	30.66
31-7	筆界	105.03	31.77
31-8	筆界	341.29	103.24
31-9	筆界	87.15	26.36
31-10	筆界	199.68	60.40
31-11	筆界	138.74	41.96
31-12	筆界	143.32	43.35
31-13	筆界	231.21	69.94
31-14	筆界	267.20	80.83
31-15	筆界	613.32	185.53
31-16	筆界	330.80	100.06
31-17	筆合	529.36	160.13
	計	3458.83	1046.25

面積 (座標法) 計算書

地番 = 31-1

測点名	[1] X (i)	[2] X (i+1)-X (i-1)	[3] Y (i)	[4] Y (i+1)-Y (i-1)	[2] * [3]	[1] * [4]	方向角	夾角	距離
31-24	-150038.091	-3.707	-41741.286	12.173	154734.947202	-1826413.681743	99-16-55	92-57-24	12.524
31-25K	-150040.111	-0.381	-41728.926	12.582	15898.720806	-1887804.676602	7-42-49	88-25-54	1.654
31-11	-150038.472	3.707	-41728.704	-12.173	-154688.305728	1826418.319656	279-28-19	91-45-30	12.566
31-9	-150036.404	0.381	-41741.099	-12.582	-15903.358719	1887758.035128	186-19-31	86-51-12	1.697
合計				倍面積 面積	42.003561 21.00	-42.003561 21.00			28.441

面積 (座標法) 計算書

地番 = 31-2

測点名	[1] X (i)	[2] X (i+1)-X (i-1)	[3] Y (i)	[4] Y (i+1)-Y (i-1)	[2] * [3]	[1] * [4]	方向角	夾角	距離
31-41K	-150117.915	1.259	-41739.581	-24.753	-52550.132479	3715868.749995	187-45-24	91-19-57	1.519
31-31	-150119.420	-4.268	-41739.786	24.328	178145.406648	-3652105.249760	96-25-33	88-40-09	24.688
31-17	-150122.183	-1.259	-41715.253	24.753	52519.503527	-3715974.395799	8-19-19	91-53-46	1.520
31-40K	-150120.679	4.268	-41715.033	-24.328	-178039.760844	3652135.878712	276-25-27	88-06-08	24.703
合計				倍面積 面積	75.016852 37.50	-75.016852 37.50			52.430

面積 (座標法) 計算書

地番 = 31-3

測点名	[1] X (i)	[2] X (i+1)-X (i-1)	[3] Y (i)	[4] Y (i+1)-Y (i-1)	[2] * [3]	[1] * [4]	方向角	夾角	距離
31-42K	-150120.317	-3.840	-41718.252	2.827	160198.087680	-424390.136159	96-24-59	89-59-09	3.239
31-40K	-150120.679	3.103	-41715.033	3.726	-129441.747399	-559349.649954	8-19-28	91-54-29	3.502
31-39K	-150117.214	3.840	-41714.526	-2.827	-160183.779840	424381.363978	276-25-03	88-05-35	3.355
31-43K	-150116.839	-3.103	-41717.860	-3.726	129450.519580	559335.342114	186-25-50	90-00-47	3.500
合計				倍面積 面積	23.080021 11.54	-23.080021 11.54			13.596

面積 (座標法) 計算書

地番 = 31-4

測点名	[1] X (i)	[2] X (i+1)-X (i-1)	[3] Y (i)	[4] Y (i+1)-Y (i-1)	[2] * [3]	[1] * [4]	方向角	夾角	距離
31-13	-150041.034	-18.056	-41713.513	-12.799	753179.190728	1920375.194166	188-18-30	88-34-41	19.966
31-35	-150060.790	-21.199	-41716.398	7.035	884345.921202	-1055677.657650	98-16-35	89-58-05	10.024
31-14	-150062.233	13.212	-41706.478	12.056	-551025.987336	-1809150.281048	8-17-33	90-00-58	14.810
31-102	-150047.578	19.499	-41704.342	2.879	-813192.964658	-431986.977062	8-43-13	180-25-40	4.901
31-10	-150042.734	6.544	-41703.599	-9.171	-272908.351856	1376041.913514	279-43-49	91-00-36	10.059
合計				倍面積 面積	397.808080 198.90	-397.808080 198.90			59.760

面積 (座標法) 計算書

地番 = 31-5  
測点名

	[1] X (i)	[2] X (i+1)-X (i-1)	[3] Y (i)	[4] Y (i+1)-Y (i-1)	[2]*[3]	[1]*[4]	方向角	夾角	距離
31-35	-150060.790	-8.573	-41716.398	-11.380	357634.680054	1707691.790200	188-17-36	90-01-01	10.122
31-36	-150070.806	-11.462	-41717.858	8.450	478170.088396	-1268098.310700	98-18-06	90-00-30	10.015
31-15	-150072.252	8.573	-41707.948	11.380	-357562.238204	-1707822.227760	8-20-49	90-02-43	10.126
31-14	-150062.233	11.462	-41706.478	-8.450	-478039.650836	1268025.868850	278-16-35	89-55-46	10.024
合計				倍面積 面積	202.879410 101.43	-202.879410 101.43			40.287

面積 (座標法) 計算書

地番 = 31-6  
測点名

	[1] X (i)	[2] X (i+1)-X (i-1)	[3] Y (i)	[4] Y (i+1)-Y (i-1)	[2]*[3]	[1]*[4]	方向角	夾角	距離
31-36	-150070.806	-8.577	-41717.858	-11.368	357814.068066	1706004.922608	188-16-35	89-58-29	10.128
31-37	-150080.829	-11.461	-41719.316	8.445	478145.080676	-1267432.600905	98-15-44	89-59-09	10.007
31-16	-150082.267	8.577	-41709.413	11.368	-357741.635301	-1706135.211256	8-19-20	90-03-36	10.122
31-15	-150072.252	11.461	-41707.948	-8.445	-478014.792028	1267360.168140	278-18-06	89-58-46	10.015
合計				倍面積 面積	202.721413 101.36	-202.721413 101.36			40.272

面積 (座標法) 計算書

地番 = 31-7  
測点名

	[1] X (i)	[2] X (i+1)-X (i-1)	[3] Y (i)	[4] Y (i+1)-Y (i-1)	[2]*[3]	[1]*[4]	方向角	夾角	距離
31-37	-150080.829	-8.957	-41719.316	-11.412	373679.913412	1712722.420548	188-15-35	89-59-51	10.504
31-48	-150091.224	-11.826	-41720.825	8.385	493390.476450	-1258514.913240	98-13-47	89-58-12	9.997
31-47	-150092.655	8.957	-41710.931	11.412	-373604.808967	-1712857.378860	8-18-50	90-05-03	10.498
31-16	-150082.267	11.826	-41709.413	-8.385	-493255.518138	1258439.808795	278-15-44	89-56-54	10.007
合計				倍面積 面積	210.062757 105.03	-210.062757 105.03			41.006

面積 (座標法) 計算書

地番 = 31-8  
測点名

	[1] X (i)	[2] X (i+1)-X (i-1)	[3] Y (i)	[4] Y (i+1)-Y (i-1)	[2]*[3]	[1]*[4]	方向角	夾角	距離
31-31	-150119.420	-2.396	-41739.786	-25.221	100008.527256	3786161.891820	187-35-46	91-10-13	5.205
31-49K	-150124.579	-13.904	-41740.474	-1.890	580359.550496	283735.454310	187-49-35	180-13-49	8.827
31-18	-150133.324	-9.691	-41741.676	7.374	404518.582116	-1107083.131176	96-17-41	88-28-06	8.628
31-103	-150134.270	-2.429	-41733.100	21.635	101369.699900	-3248154.931450	96-28-44	180-11-03	13.143
31-6	-150135.753	0.952	-41720.041	16.247	-39717.479032	-2439255.578991	52-37-38	136-08-54	4.012
31-5	-150133.318	13.570	-41716.853	4.788	-566097.695210	-718838.326584	8-10-37	135-32-59	11.249
31-17	-150122.183	13.898	-41715.253	-22.933	-579758.586194	3442752.022739	276-25-33	88-14-56	24.688
合計				倍面積 面積	682.599332 341.29	-682.599332 341.29			75.752

面積 (座標法) 計算書

地番 = 31-9  
測点名

	[1] X (i)	[2] X (i+1)-X (i-1)	[3] Y (i)	[4] Y (i+1)-Y (i-1)	[2]*[3]	[1]*[4]	方向角	夾角	距離
31-19K	-150123.401	-4.786	-41750.827	-11.030	199819.458022	1655861.113030	186-28-34	89-59-05	6.002
31-8	-150129.365	-9.120	-41751.504	1.837	380773.716480	-275787.643505	141-27-36	134-59-02	4.035
31-7	-150132.521	-3.959	-41748.990	9.828	165284.251410	-1475502.416388	96-15-55	134-48-19	7.358
31-18	-150133.324	7.942	-41741.676	8.516	-331512.390792	-1278535.387184	7-49-35	91-33-40	8.827
31-49K	-150124.579	9.923	-41740.474	-9.151	-414190.723502	1373790.022429	276-29-29	88-39-54	10.420
合計				倍面積 面積	174.311618 87.15	-174.311618 87.15			36.642

面積 (座標法) 計算書

地番 = 31-10  
測点名

	[1] X (i)	[2] X (i+1)-X (i-1)	[3] Y (i)	[4] Y (i+1)-Y (i-1)	[2]*[3]	[1]*[4]	方向角	夾角	距離
31-20	-150104.808	-17.507	-41748.746	-12.886	730895.296222	1934250.555888	186-23-10	90-38-48	18.709
31-19K	-150123.401	-19.771	-41750.827	8.272	825455.600617	-1241820.773072	96-29-29	90-06-19	10.420
31-49K	-150124.579	3.981	-41740.474	11.041	-166168.826994	-1657525.476739	7-35-46	91-06-17	5.205
31-31	-150119.420	18.685	-41739.786	2.533	-779907.901410	-380252.490860	7-46-03	180-10-17	13.651
31-30K	-150105.894	14.612	-41737.941	-8.960	-609874.793892	1344948.810240	275-44-22	87-58-19	10.859
合計				倍面積 面積	399.374543 199.68	-399.374543 199.68			58.844

面積 (座標法) 計算書

地番 = 31-11  
測点名

	[1] X (i)	[2] X (i+1)-X (i-1)	[3] Y (i)	[4] Y (i+1)-Y (i-1)	[2]*[3]	[1]*[4]	方向角	夾角	距離
31-21	-150092.243	-11.376	-41747.340	-12.502	474917.739840	1876453.221986	186-23-05	90-16-07	12.643
31-20	-150104.808	-13.651	-41748.746	9.399	569912.131646	-1410835.090392	95-44-22	89-21-17	10.859
31-30K	-150105.894	0.591	-41737.941	11.025	-24667.123131	-1654917.481350	7-28-26	91-44-04	1.691
31-46	-150104.217	12.462	-41737.721	1.697	-520135.479102	-254726.856249	7-47-53	180-19-27	10.886
31-29K	-150093.432	11.974	-41736.244	-9.619	-499749.785656	1443748.722408	276-06-58	88-19-05	11.160
合計				倍面積 面積	277.483597 138.74	-277.483597 138.74			47.239

面積 (座標法) 計算書

地番 = 31-12  
測点名

	[1] X (i)	[2] X (i+1)-X (i-1)	[3] Y (i)	[4] Y (i+1)-Y (i-1)	[2]*[3]	[1]*[4]	方向角	夾角	距離
31-22	-150079.674	-11.377	-41745.936	-12.820	474943.513872	1924021.420680	186-22-25	90-24-46	12.647
31-21	-150092.243	-13.758	-41747.340	9.692	574359.903720	-1454694.019156	96-06-58	89-44-33	11.160
31-29K	-150093.432	11.377	-41736.244	12.820	-474833.247988	-1924197.798240	7-48-43	91-41-45	12.684
31-28K	-150080.866	13.758	-41734.520	-9.692	-574183.526160	1454583.753272	275-57-39	88-08-56	11.478
合計				倍面積 面積	286.643444 143.32	-286.643444 143.32			47.969

面積 (座標法) 計算書

地番 = 31-13

測点名	[1] X (i)	[2] X (i+1)-X (i-1)	[3] Y (i)	[4] Y (i+1)-Y (i-1)	[2] * [3]	[1] * [4]	方向角	夾角	距離
31-23	-150059.949	-18.163	-41743.736	-14.105	758191.476968	2116595.580645	186-21-51	88-53-22	19.847
31-22	-150079.674	-20.917	-41745.936	9.216	873199.743312	-1383134.275584	95-57-39	89-35-48	11.478
31-28K	-150080.866	18.163	-41734.520	14.105	-758024.086760	-2116890.614930	7-54-34	91-56-55	19.541
31-27K	-150061.511	20.917	-41731.831	-9.216	-872904.709027	1382966.885376	277-28-29	89-33-55	12.007
合計				倍面積 面積	462.424493 231.21	-462.424493 231.21			62.873

面積 (座標法) 計算書

地番 = 31-14

測点名	[1] X (i)	[2] X (i+1)-X (i-1)	[3] Y (i)	[4] Y (i+1)-Y (i-1)	[2] * [3]	[1] * [4]	方向角	夾角	距離
31-24	-150038.091	-19.838	-41741.286	-14.810	828063.631668	2222064.127710	186-23-44	87-06-49	21.995
31-23	-150059.949	-23.420	-41743.736	9.455	977638.297120	-1418816.817795	97-28-29	91-04-45	12.007
31-27K	-150061.511	19.838	-41731.831	14.810	-827876.063378	-2222410.977910	7-43-50	90-15-21	21.596
31-25K	-150040.111	23.420	-41728.926	-9.455	-977291.446920	1418629.249505	279-16-55	91-33-05	12.524
合計				倍面積 面積	534.418490 267.20	-534.418490 267.20			68.122

面積 (座標法) 計算書

地番 = 31-15

測点名	[1] X (i)	[2] X (i+1)-X (i-1)	[3] Y (i)	[4] Y (i+1)-Y (i-1)	[2] * [3]	[1] * [4]	方向角	夾角	距離
31-37	-150080.829	7.752	-41719.316	16.341	-323408.137632	-2452470.826689	8-16-35	89-36-02	10.128
31-36	-150070.806	20.039	-41717.858	2.918	-835984.156462	-437906.611908	8-17-36	180-01-01	10.122
31-35	-150060.790	29.772	-41716.398	4.345	-1241980.601256	-652014.132550	8-18-30	180-00-54	19.966
31-13	-150041.034	21.340	-41713.513	-6.654	-890166.367420	998373.040236	279-25-42	91-07-12	9.670
31-104	-150039.450	2.562	-41723.052	-15.191	-106894.459224	2279249.284950	279-49-01	180-23-19	5.736
31-11	-150038.472	-22.061	-41728.704	-8.779	920576.938944	1317187.745688	187-43-46	87-54-45	23.250
31-27K	-150061.511	-40.086	-41731.831	-5.495	1672862.177466	824588.002945	187-54-30	180-10-44	17.211
31-44K	-150078.558	-19.318	-41734.199	12.515	806221.256282	-1878233.153370	98-40-33	90-46-03	15.055
合計				倍面積 面積	1226.650698 613.32	-1226.650698 613.32			111.138

面積 (座標法) 計算書

地番 = 31-16  
測点名

	[1] X (i)	[2] X (i+1)-X (i-1)	[3] Y (i)	[4] Y (i+1)-Y (i-1)	[2] * [3]	[1] * [4]	方向角	夾角	距離
31-46	-150104.217	1.103	-41737.721	-24.911	-46036.706263	3739246.149687	187-28-26	91-03-00	1.691
31-30K	-150105.894	-13.698	-41737.941	-1.860	571726.315818	279196.962840	187-46-08	180-17-42	12.132
31-41K	-150117.915	-14.423	-41739.581	19.689	602009.976763	-2955671.628435	96-25-31	88-39-23	21.464
31-42K	-150120.317	1.076	-41718.252	21.721	-44888.839152	-3260763.405557	6-25-50	90-00-19	3.500
31-43K	-150116.839	3.103	-41717.860	3.726	-129450.519580	-559335.342114	96-25-03	269-59-13	3.355
31-39K	-150117.214	9.842	-41714.526	4.830	-410554.364892	-725066.143620	8-19-49	91-54-46	10.326
31-45	-150106.997	12.997	-41713.030	-23.195	-542144.250910	3481731.795415	276-25-26	88-05-37	24.847
合計				倍面積 面積	661.611784 330.80	-661.611784 330.80			77.315

面積 (座標法) 計算書

地番 = 31-17  
測点名

	[1] X (i)	[2] X (i+1)-X (i-1)	[3] Y (i)	[4] Y (i+1)-Y (i-1)	[2] * [3]	[1] * [4]	方向角	夾角	距離
31-37	-150080.829	12.666	-41719.316	-13.374	-528416.856456	2007181.007046	278-40-33	90-24-58	15.055
31-44K	-150078.558	-0.037	-41734.199	-15.204	1544.165363	2281794.395832	187-55-05	89-14-32	2.330
31-28K	-150080.866	-14.874	-41734.520	-2.045	620759.250480	306915.370970	187-48-43	179-53-38	12.684
31-29K	-150093.432	-23.351	-41736.244	-3.201	974583.033644	480449.075832	187-47-53	179-59-10	10.886
31-46	-150104.217	-13.565	-41737.721	23.214	566172.185365	-3484519.293438	96-25-26	88-37-33	24.847
31-45	-150106.997	11.562	-41713.030	26.790	-482286.052860	-4021366.449630	8-19-35	91-54-09	14.495
31-47	-150092.655	15.773	-41710.931	-7.795	-657906.514663	1169972.245725	278-13-47	89-54-12	9.997
31-48	-150091.224	11.826	-41720.825	-8.385	-493390.476450	1258514.913240	8-15-35	270-01-48	10.504
合計				倍面積 面積	1058.734423 529.36	-1058.734423 529.36			100.798