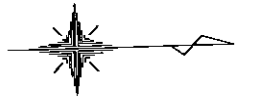
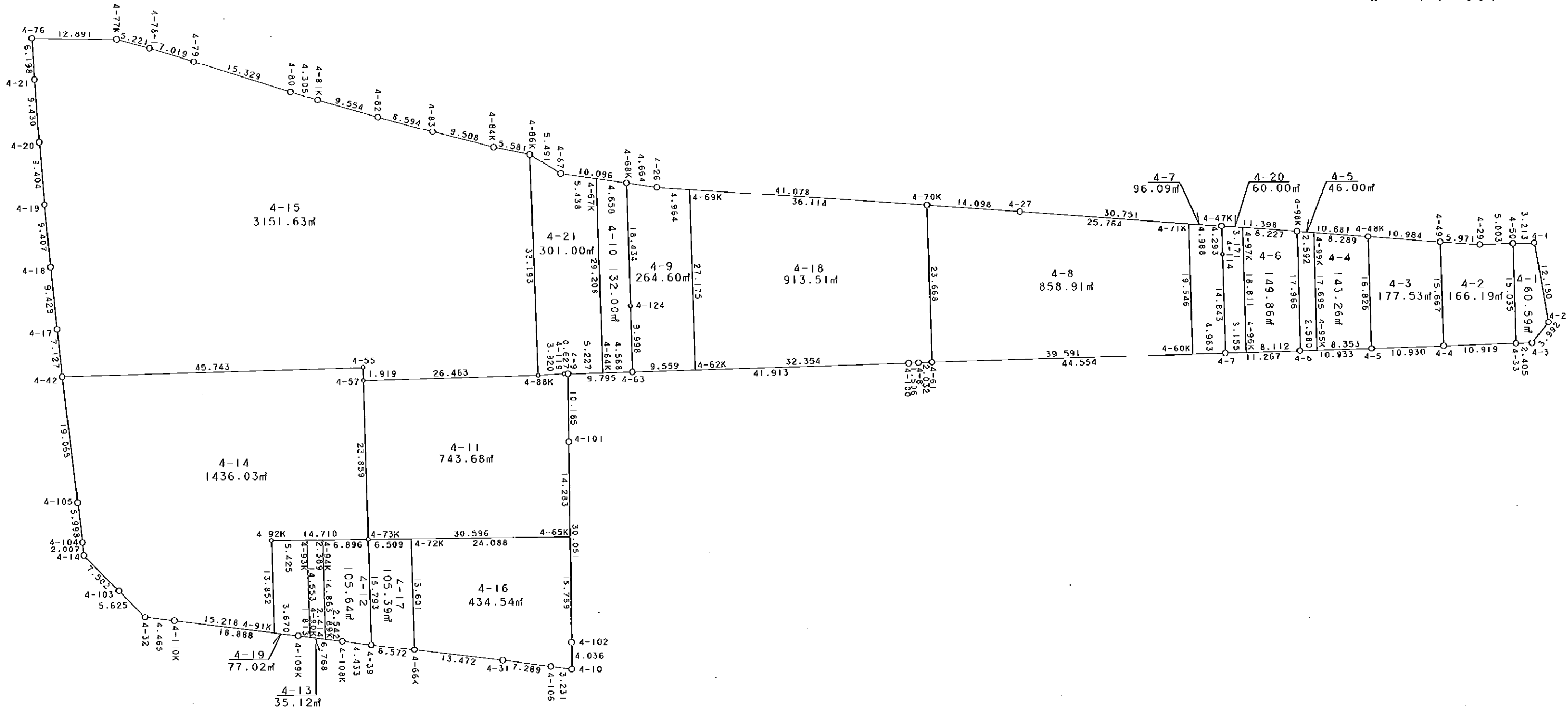


4街区



S = 1 / 600



凡 例

記号	名称
⊙	地区界点
○	街区点
○	画地点 (折れ点)
└	画地点 (直線中)

地番	筆種別	面積	坪数
4-1	筆界	60.59	18.32
4-2	筆界	166.19	50.27
4-3	筆界	177.53	53.70
4-4	筆界	143.26	43.33
4-5	筆界	46.00	13.91
4-6	筆界	149.86	45.33
4-7	筆界	96.09	29.06
4-8	筆界	858.91	259.82
4-9	筆界	264.60	80.04
4-10	筆界	132.00	39.93
4-11	筆界	743.68	224.96
4-12	筆界	105.64	31.95
4-13	筆界	35.12	10.62
4-14	筆界	1436.03	434.39
4-15	筆界	3151.63	953.36
4-16	筆界	434.54	131.44
4-17	筆界	105.39	31.88
4-18	筆界	913.51	276.33
4-19	筆界	77.02	23.30
4-20	筆界	60.00	18.15
4-21	筆界	301.00	91.05
	合	9458.59	2861.14

面積 (座標法) 計算書

地番 = 4-1
測点名

	[1] X (i)	[2] X (i+1)-X (i-1)	[3] Y (i)	[4] Y (i+1)-Y (i-1)	[2]*[3]	[1]*[4]	方向角	夾角	距離
4-1	-149633.253	-5.015	-41740.398	-12.005	209328.095970	1796347.202265	179-48-14	98-19-58	3.213
4-50	-149636.466	-3.202	-41740.387	15.046	133652.719174	-2251430.267436	89-57-29	90-09-15	15.035
4-33	-149636.455	2.416	-41725.352	15.035	-100808.450432	-2249784.100925	0-00-00	90-02-31	2.405
4-3	-149634.050	5.004	-41725.352	-3.030	-208793.661408	453391.171500	310-37-18	130-37-18	3.992
4-2	-149631.451	0.797	-41728.382	-15.046	-33257.520454	2251354.811746	261-28-16	130-50-58	12.150
合計				倍面積 面積	121.182850 60.59	-121.182850 60.59			36.795

面積 (座標法) 計算書

地番 = 4-2
測点名

	[1] X (i)	[2] X (i+1)-X (i-1)	[3] Y (i)	[4] Y (i+1)-Y (i-1)	[2]*[3]	[1]*[4]	方向角	夾角	距離
4-49	-149647.410	-5.905	-41740.953	15.065	246480.327465	-2254438.231650	89-52-06	84-04-56	15.667
4-4	-149647.374	10.955	-41725.286	15.601	-457100.508130	-2334648.681774	359-39-13	89-47-07	10.919
4-33	-149636.455	10.908	-41725.352	-15.101	-455140.139616	2259660.106955	269-57-29	90-18-16	15.035
4-50	-149636.466	-5.014	-41740.387	-14.999	209286.300418	2244397.353534	179-35-16	89-37-47	5.003
4-29	-149641.469	-10.944	-41740.351	-0.566	456806.401344	84697.071454	185-47-10	186-11-54	5.971
合計				倍面積 面積	332.381481 166.19	-332.381481 166.19			52.595

面積 (座標法) 計算書

地番 = 4-3
測点名

	[1] X (i)	[2] X (i+1)-X (i-1)	[3] Y (i)	[4] Y (i+1)-Y (i-1)	[2]*[3]	[1]*[4]	方向角	夾角	距離
4-48K	-149658.337	-10.894	-41742.074	15.705	454738.154156	-2350384.182585	89-53-15	84-01-48	16.826
4-5	-149658.304	10.963	-41725.248	16.788	-457433.893824	-2512463.607552	359-48-03	89-54-48	10.930
4-4	-149647.374	10.894	-41725.286	-15.705	-454555.265684	2350212.008670	269-52-06	90-04-03	15.667
4-49	-149647.410	-10.963	-41740.953	-16.788	457606.067739	2512280.719080	185-51-27	95-59-21	10.984
合計				倍面積 面積	355.062387 177.53	-355.062387 177.53			54.407

面積 (座標法) 計算書

地番 = 4-4
測点名

	[1] X (i)	[2] X (i+1)-X (i-1)	[3] Y (i)	[4] Y (i+1)-Y (i-1)	[2]*[3]	[1]*[4]	方向角	夾角	距離
4-95K	-149666.657	8.279	-41725.221	17.668	-345443.104659	-2644310.495876	359-48-53	89-34-30	8.353
4-5	-149658.304	8.320	-41725.248	-16.853	-347154.063360	2522191.397312	269-53-15	90-04-22	16.826
4-48K	-149658.337	-8.279	-41742.074	-17.668	345582.630646	2644163.498116	185-49-49	95-56-34	8.289
4-99K	-149666.583	-8.320	-41742.916	16.853	347301.061120	-2522330.923299	90-14-23	84-24-34	17.695
合計				倍面積 面積	286.523747 143.26	-286.523747 143.26			51.163

面積 (座標法) 計算書

地番 = 4-5
測点名

	[1] X (i)	[2] X (i+1)-X (i-1)	[3] Y (i)	[4] Y (i+1)-Y (i-1)	[2]*[3]	[1]*[4]	方向角	夾角	距離
4-99K	-149666.583	-2.505	-41742.916	-17.958	104566.004580	2687712.497514	185-49-22	95-34-59	2.592
4-98K	-149669.162	-2.654	-41743.179	17.703	110786.397066	-2649593.174886	90-14-21	84-24-59	17.966
4-6	-149669.237	2.505	-41725.213	17.958	-104521.658565	-2687760.158046	359-49-20	89-34-59	2.580
4-95K	-149666.657	2.654	-41725.221	-17.703	-110738.736534	2649548.828871	270-14-23	90-25-03	17.695
合計				倍面積 面積	92.006547 46.00	-92.006547 46.00			40.833

面積 (座標法) 計算書

地番 = 4-6
測点名

	[1] X (i)	[2] X (i+1)-X (i-1)	[3] Y (i)	[4] Y (i+1)-Y (i-1)	[2]*[3]	[1]*[4]	方向角	夾角	距離
4-96K	-149677.349	8.111	-41725.191	18.789	-338433.024201	-2812287.710361	359-50-41	89-50-30	8.112
4-6	-149669.237	8.187	-41725.213	-17.988	-341604.318831	2692250.235156	270-14-21	90-23-40	17.966
4-98K	-149669.162	-8.111	-41743.179	-18.789	338578.924869	2812133.884818	185-44-28	95-30-07	8.227
4-97K	-149677.348	-8.187	-41744.002	17.988	341758.144374	-2692396.135824	90-00-11	84-15-43	18.811
合計				倍面積 面積	299.726211 149.86	-299.726211 149.86			53.116

面積 (座標法) 計算書

地番 = 4-7
測点名

	[1] X (i)	[2] X (i+1)-X (i-1)	[3] Y (i)	[4] Y (i+1)-Y (i-1)	[2]*[3]	[1]*[4]	方向角	夾角	距離
4-60K	-149685.467	4.962	-41725.167	19.630	-207040.278654	-2938325.717210	359-48-55	89-48-45	4.963
4-7	-149680.504	4.949	-41725.183	-14.859	-206497.930667	2224102.608936	269-56-45	90-07-50	14.843
4-114	-149680.518	0.001	-41740.026	-19.136	-41.740026	2864286.392448	270-12-01	180-15-16	4.293
4-47K	-149680.503	-4.948	-41744.319	-4.787	206550.890412	716520.567861	185-41-03	95-29-02	4.988
4-71K	-149685.466	-4.964	-41744.813	19.152	207221.251732	-2866776.044832	90-00-10	84-19-07	19.646
合計				倍面積 面積	192.192797 96.09	-192.192797 96.09			48.733

面積 (座標法) 計算書

地番 = 4-8
測点名

	[1] X (i)	[2] X (i+1)-X (i-1)	[3] Y (i)	[4] Y (i+1)-Y (i-1)	[2]*[3]	[1]*[4]	方向角	夾角	距離
4-71K	-149685.466	-25.636	-41744.813	-22.197	1070170.026068	3322568.288802	185-40-57	95-40-47	25.764
4-27	-149711.103	-39.671	-41747.364	-3.893	1656159.677244	582825.323979	185-27-44	179-46-47	14.098
4-70K	-149725.137	-13.955	-41748.706	22.326	582603.192230	-3342763.408662	89-48-32	84-20-48	23.668
4-61	-149725.058	39.670	-41725.038	23.539	-1655232.257460	-3524378.140262	359-48-48	90-00-16	39.591
4-60K	-149685.467	39.592	-41725.167	-19.775	-1651982.811864	2960030.109925	270-00-10	90-11-22	19.646
合計				倍面積 面積	1717.826218 858.91	-1717.826218 858.91			122.767

面積 (座標法) 計算書

地番 = 4-9
測点名

	[1] X (i)	[2] X (i+1)-X (i-1)	[3] Y (i)	[4] Y (i+1)-Y (i-1)	[2]*[3]	[1]*[4]	方向角	夾角	距離
4-69K	-149761.093	-5.085	-41752.085	-27.639	212309.352225	4139246.849427	185-21-49	95-39-54	4.964
4-26	-149766.035	-9.543	-41752.549	-1.231	398444.575107	184361.989085	189-27-52	184-06-03	4.664
4-68K	-149770.636	-4.516	-41753.316	17.667	188557.975056	-2645997.826212	89-44-09	80-16-17	18.434
4-124	-149770.551	0.127	-41734.882	28.432	-5300.330014	-4258276.306032	89-45-34	180-01-25	9.998
4-63	-149770.509	9.601	-41724.884	9.972	-400600.611284	-1493511.515748	359-50-39	90-05-05	9.559
4-62K	-149760.950	9.416	-41724.910	-27.201	-392881.752560	4073647.600950	269-41-55	89-51-16	27.175
合計				倍面積 面積	529.208530 264.60	-529.208530 264.60			74.794

面積 (座標法) 計算書

地番 = 4-10
測点名

	[1] X (i)	[2] X (i+1)-X (i-1)	[3] Y (i)	[4] Y (i+1)-Y (i-1)	[2]*[3]	[1]*[4]	方向角	夾角	距離
4-64K	-149775.077	4.721	-41724.877	29.201	-196983.144317	-4373582.023477	359-54-44	90-12-44	4.568
4-63	-149770.509	4.526	-41724.884	-10.005	-188846.824984	1498453.942545	269-45-34	89-50-50	9.998
4-124	-149770.551	-0.127	-41734.882	-28.432	5300.330014	4258276.306032	269-44-09	179-58-35	18.434
4-68K	-149770.636	-4.679	-41753.316	-19.203	195363.765564	2876045.523108	189-30-10	99-46-01	4.658
4-67K	-149775.230	-4.441	-41754.085	28.439	185429.891485	-4259457.765970	89-42-00	80-11-50	29.208
合計				倍面積 面積	264.017762 132.00	-264.017762 132.00			66.866

面積 (座標法) 計算書

地番 = 4-11
測点名

	[1] X (i)	[2] X (i+1)-X (i-1)	[3] Y (i)	[4] Y (i+1)-Y (i-1)	[2]*[3]	[1]*[4]	方向角	夾角	距離
4-65K	-149780.650	30.801	-41700.405	-13.836	-1284414.174405	2072365.073400	270-50-04	90-00-04	14.283
4-101	-149780.442	0.346	-41714.686	-24.465	-14433.281356	3664378.513530	270-46-35	179-56-31	10.185
4-9	-149780.304	-0.488	-41724.870	-10.210	20361.736560	1529256.903840	182-22-42	91-36-07	0.627
4-119	-149780.930	-4.545	-41724.896	0.068	189639.652320	-10185.103240	178-37-34	176-14-52	3.920
4-88K	-149784.849	-30.382	-41724.802	0.187	1267682.934364	-28009.766763	179-47-55	181-10-21	26.463
4-57	-149811.312	-26.394	-41724.709	23.952	1101281.969346	-3588280.545024	89-50-03	90-02-08	23.859
4-73K	-149811.243	30.662	-41700.850	24.304	-1278631.462700	-3641012.449872	0-50-00	90-59-57	30.596
合計				倍面積 面積	1487.374129 743.68	-1487.374129 743.68			109.933

面積 (座標法) 計算書

地番 = 4-12
測点名

	[1] X (i)	[2] X (i+1)-X (i-1)	[3] Y (i)	[4] Y (i+1)-Y (i-1)	[2] * [3]	[1] * [4]	方向角	夾角	距離
4-89K	-149818.084	2.570	-41686.087	15.226	-107133.243590	-2281130.146984	8-12-35	98-25-04	2.542
4-108K	-149815.568	6.899	-41685.724	1.030	-287589.809876	-154310.035040	8-39-10	180-26-35	4.433
4-39	-149811.185	4.325	-41685.057	-15.126	-180287.871525	2266043.984310	269-47-22	81-08-12	15.793
4-73K	-149811.243	-6.953	-41700.850	-15.893	289946.010050	2380950.084999	180-49-51	91-02-29	6.896
4-94K	-149818.138	-6.841	-41700.950	14.763	285276.198950	-2211765.171294	89-47-31	88-57-40	14.863
合計				倍面積 面積	211.284009 105.64	-211.284009 105.64			44.527

面積 (座標法) 計算書

地番 = 4-13
測点名

	[1] X (i)	[2] X (i+1)-X (i-1)	[3] Y (i)	[4] Y (i+1)-Y (i-1)	[2] * [3]	[1] * [4]	方向角	夾角	距離
4-90K	-149820.473	2.443	-41686.432	14.898	-101839.953376	-2232025.406754	8-13-03	98-25-48	2.414
4-89K	-149818.084	2.335	-41686.087	-14.518	-97337.013145	2175058.943512	269-47-31	81-34-28	14.863
4-94K	-149818.138	-2.443	-41700.950	-14.898	101875.420850	2231990.619924	180-50-22	91-02-51	2.389
4-93K	-149820.527	-2.335	-41700.985	14.518	97371.799975	-2175094.410986	89-47-15	88-56-53	14.553
合計				倍面積 面積	70.254304 35.12	-70.254304 35.12			34.219

面積 (座標法) 計算書

地番 = 4-14
測点名

	[1] X (i)	[2] X (i+1)-X (i-1)	[3] Y (i)	[4] Y (i+1)-Y (i-1)	[2] * [3]	[1] * [4]	方向角	夾角	距離
4-42	-149857.065	-43.890	-41726.460	19.143	1831374.329400	-2868713.795295	84-25-21	84-37-59	19.065
4-105	-149855.212	2.413	-41707.485	24.947	-100640.161305	-3738437.973764	84-38-35	180-13-14	5.998
4-104	-149854.652	0.728	-41701.513	7.972	-30358.701464	-1194641.285744	85-11-54	180-33-19	2.007
4-14	-149854.484	5.386	-41699.513	7.390	-224593.577018	-1107424.636760	45-55-44	140-43-50	7.502
4-103	-149849.266	9.108	-41694.123	9.453	-379750.072284	-1416525.111498	46-14-46	180-19-02	5.625
4-32	-149845.376	8.302	-41690.060	4.752	-346110.878120	-712065.226752	8-52-33	142-37-47	4.465
4-110K	-149840.964	19.476	-41689.371	2.848	-811942.189596	-426747.065472	8-09-22	179-16-49	15.218
4-91K	-149825.900	15.013	-41687.212	-11.693	-625850.113756	1751914.248700	269-47-21	81-37-59	13.852
4-92K	-149825.951	14.657	-41701.064	-13.638	-611212.495048	2043326.319738	0-50-01	271-02-40	14.710
4-73K	-149811.243	14.639	-41700.850	-23.645	-610458.743150	3542286.840735	269-50-03	89-00-02	23.859
4-57	-149811.312	-0.079	-41724.709	-25.778	3296.252011	3861836.000736	269-42-05	179-52-02	1.919
4-55	-149811.322	-45.753	-41726.628	-1.751	1909118.410884	262319.624822	179-47-22	90-05-17	45.743
合計				倍面積 面積	2872.060554 1436.03	-2872.060554 1436.03			159.963

面積 (座標法) 計算書

地番 = 4-15
測点名

	[1] X (i)	[2] X (i+1)-X (i-1)	[3] Y (i)	[4] Y (i+1)-Y (i-1)	[2] * [3]	[1] * [4]	方向角	夾角	距離
4-86K	-149785.185	-5.781	-41757.993	-34.414	241402.957533	5154707.356590	192-39-33	103-14-21	5.581
4-84K	-149790.630	-14.605	-41759.216	-3.770	609893.349680	564710.675100	195-32-20	182-52-47	9.508
4-83	-149799.790	-17.411	-41761.763	-4.952	727114.055593	741808.560080	196-15-01	180-42-41	8.594
4-82	-149808.041	-17.377	-41764.168	-5.234	725735.947336	784095.286594	197-13-23	180-58-22	9.554
4-81K	-149817.167	-13.214	-41766.997	-4.180	551909.098358	626235.758060	198-17-16	181-03-53	4.305
4-80	-149821.255	-18.623	-41768.348	-6.221	777851.944804	932038.027355	198-31-25	180-14-09	15.329
4-79	-149835.790	-21.200	-41773.218	-7.070	885592.221600	1059339.035300	198-16-02	179-44-37	7.019
4-78-1	-149842.455	-11.680	-41775.418	-3.651	487936.882240	547074.803205	196-08-13	177-52-11	5.221
4-77K	-149847.470	-17.897	-41776.869	-1.926	747680.624493	288606.227220	182-06-42	165-58-29	12.891
4-76	-149860.352	-12.638	-41777.344	5.718	527982.073472	-856901.492736	87-44-38	85-37-56	6.198
4-21	-149860.108	0.718	-41771.151	15.611	-29991.686418	-2339466.145988	87-07-08	179-22-30	9.430
4-20	-149859.634	1.046	-41761.733	18.805	-43682.772718	-2818110.417370	86-30-47	179-23-39	9.404
4-19	-149859.062	1.229	-41752.346	18.771	-51313.633234	-2813004.452802	85-59-42	179-28-55	9.407
4-18	-149858.405	1.399	-41742.962	18.784	-58398.403838	-2814940.279520	85-29-12	179-29-30	9.429
4-17	-149857.663	1.340	-41733.562	16.502	-55922.973080	-2472951.154826	85-11-13	179-42-01	7.127
4-42	-149857.065	46.341	-41726.460	6.934	-1933645.882860	-1039108.888710	359-47-22	94-36-09	45.743
4-55	-149811.322	45.753	-41726.628	1.751	-1909118.410884	-262319.624822	89-42-05	269-54-43	1.919
4-57	-149811.312	26.473	-41724.709	1.826	-1104578.221357	-273555.455712	359-47-55	90-05-50	26.463
4-88K	-149784.849	26.127	-41724.802	-33.284	-1090143.901854	4985438.914116	269-25-12	89-37-17	33.193
合計				倍面積 面積	6303.268866 3151.63	-6303.268866 3151.63			236.315

面積 (座標法) 計算書

地番 = 4-16
測点名

	[1] X (i)	[2] X (i+1)-X (i-1)	[3] Y (i)	[4] Y (i+1)-Y (i-1)	[2] * [3]	[1] * [4]	方向角	夾角	距離
4-66K	-149804.675	13.396	-41684.154	18.510	-558400.926984	-2772884.534250	8-08-47	98-21-12	13.472
4-31	-149791.339	20.531	-41682.245	3.074	-855778.172095	-460458.576086	9-11-51	181-03-04	7.289
4-106	-149784.144	10.391	-41681.080	1.642	-433108.102280	-245945.564448	8-29-19	179-17-28	3.231
4-10	-149780.948	3.264	-41680.603	-3.558	-136045.488192	532920.612984	270-57-56	82-28-37	4.036
4-102	-149780.880	0.298	-41684.638	-19.802	-12422.022124	2965960.985760	270-50-09	179-52-13	15.769
4-65K	-149780.650	-23.855	-41700.405	-16.117	994763.161275	2414014.736050	180-49-57	89-59-48	24.088
4-72K	-149804.735	-24.025	-41700.755	16.251	1001860.638875	-2434476.748485	89-47-35	88-57-38	16.601
合計				倍面積 面積	869.088475 434.54	-869.088475 434.54			84.486

面積 (座標法) 計算書

地番 = 4-17
測点名

	[1] X (i)	[2] X (i+1)-X (i-1)	[3] Y (i)	[4] Y (i+1)-Y (i-1)	[2] * [3]	[1] * [4]	方向角	夾角	距離
4-72K	-149804.735	-6.568	-41700.755	-16.696	273890.558840	2501139.855560	180-50-11	91-02-36	6.509
4-73K	-149811.243	-6.450	-41700.850	15.698	268970.482500	-2351736.892614	89-47-22	88-57-11	15.793
4-39	-149811.185	6.568	-41685.057	16.696	-273787.454376	-2501247.544760	7-53-50	98-06-28	6.572
4-66K	-149804.675	6.450	-41684.154	-15.698	-268862.793300	2351633.788150	269-47-35	81-53-45	16.601
合計				倍面積 面積	210.793664 105.39	-210.793664 105.39			45.475

面積 (座標法) 計算書

地番 = 4-18
測点名

	[1] X (i)	[2] X (i+1)-X (i-1)	[3] Y (i)	[4] Y (i+1)-Y (i-1)	[2]*[3]	[1]*[4]	方向角	夾角	距離
4-62K	-149760.950	32.497	-41724.910	27.086	-1355934.400270	-4056425.091700	359-50-33	90-08-38	32.354
4-100	-149728.596	33.860	-41724.999	-0.119	-1412808.466140	17817.702924	358-51-32	179-00-59	1.506
4-8	-149727.090	3.538	-41725.029	-0.039	-147623.152602	5839.356510	359-44-46	180-53-14	2.032
4-61	-149725.058	1.953	-41725.038	-23.677	-81488.999214	3545040.198266	269-48-32	90-03-46	23.668
4-70K	-149725.137	-36.035	-41748.706	-27.047	1504414.620710	4049615.780439	185-22-07	95-33-35	36.114
4-69K	-149761.093	-35.813	-41752.085	23.796	1495267.420105	-3563714.969028	89-41-55	84-19-48	27.175
合計				倍面積 面積	1827.022589 913.51	-1827.022589 913.51			122.849

面積 (座標法) 計算書

地番 = 4-19
測点名

	[1] X (i)	[2] X (i+1)-X (i-1)	[3] Y (i)	[4] Y (i+1)-Y (i-1)	[2]*[3]	[1]*[4]	方向角	夾角	距離
4-91K	-149825.900	3.684	-41687.212	14.373	-153575.689008	-2153447.660700	8-09-40	98-22-19	3.670
4-109K	-149822.267	5.427	-41686.691	0.780	-226233.672057	-116861.368260	8-12-54	180-03-14	1.813
4-90K	-149820.473	1.740	-41686.432	-14.294	-72534.391680	2141533.841062	269-47-15	81-34-21	14.553
4-93K	-149820.527	-5.478	-41700.985	-14.632	228437.995830	2192173.951064	180-50-04	91-02-49	5.425
4-92K	-149825.951	-5.373	-41701.064	13.773	224059.816872	-2063552.823123	89-47-21	88-57-17	13.852
合計				倍面積 面積	154.059957 77.02	-154.059957 77.02			39.313

面積 (座標法) 計算書

地番 = 4-20
測点名

	[1] X (i)	[2] X (i+1)-X (i-1)	[3] Y (i)	[4] Y (i+1)-Y (i-1)	[2]*[3]	[1]*[4]	方向角	夾角	距離
4-97K	-149677.348	-3.154	-41744.002	-19.128	131660.582308	2863028.312544	185-44-15	95-44-04	3.171
4-47K	-149680.503	-3.170	-41744.319	3.976	132329.491230	-595129.679928	90-12-01	84-27-46	4.293
4-114	-149680.518	-0.001	-41740.026	19.136	41.740026	-2864286.392448	89-56-45	179-44-44	14.843
4-7	-149680.504	3.169	-41725.183	14.835	-132227.104927	-2220510.276840	359-51-17	89-54-32	3.155
4-96K	-149677.349	3.156	-41725.191	-18.819	-131684.702796	2816778.030831	270-00-11	90-08-54	18.811
合計				倍面積 面積	120.005841 60.00	-120.005841 60.00			44.273

面積 (座標法) 計算書

地番 = 4-21
測点名

	[1] X (i)	[2] X (i+1)-X (i-1)	[3] Y (i)	[4] Y (i+1)-Y (i-1)	[2] * [3]	[1] * [4]	方向角	夾 角	距 離
4-67K	-149775.230	-5.517	-41754.085	-30.104	230357.286945	4508833.523920	189-28-59	99-46-59	5.438
4-87	-149780.594	-9.955	-41754.981	-3.908	415670.835855	585342.561352	213-16-03	203-47-04	5.491
4-86K	-149785.185	-4.255	-41757.993	30.179	177680.260215	-4520367.098115	89-25-12	56-09-09	33.193
4-88K	-149784.849	4.255	-41724.802	33.097	-177539.032510	-4957429.147353	358-37-34	89-12-22	3.920
4-119	-149780.930	4.545	-41724.896	-0.068	-189639.652320	10185.103240	2-22-42	183-45-08	0.627
4-9	-149780.304	5.853	-41724.870	0.019	-244215.664110	-2845.825776	359-55-24	177-32-42	5.227
4-64K	-149775.077	5.074	-41724.877	-29.215	-211712.025898	4375678.874555	269-42-00	89-46-36	29.208
合計					602.008177	-602.008177			83.104
				倍面積 面積	301.00	301.00			