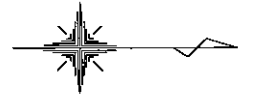
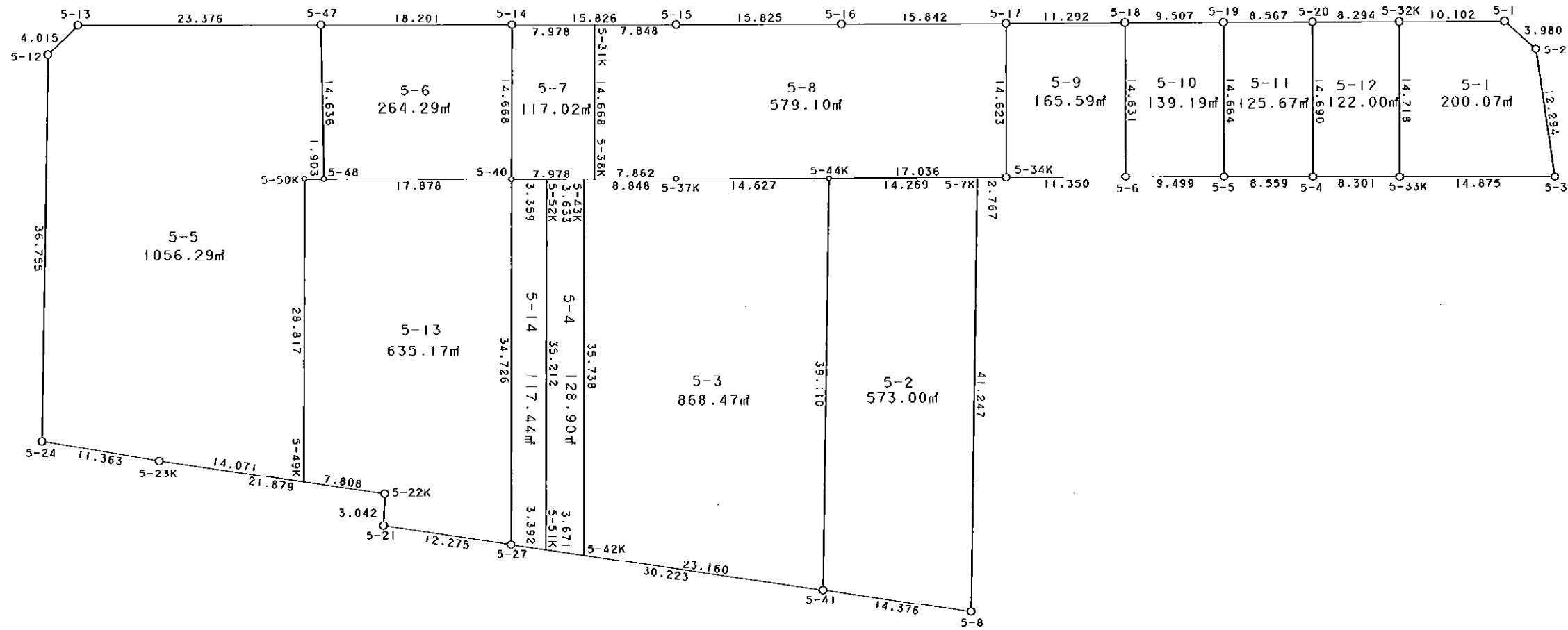


5街区



S = 1 / 500



凡 例

記号	名称
⊙	地区界点
○	街区点
○	画地点 (折れ点)
┆	画地点 (直線中)

地番	筆種別	面積	坪数
5-1	筆界	200.07	60.52
5-2	筆界	573.00	173.33
5-3	筆界	868.47	262.71
5-4	筆界	128.90	38.99
5-5	筆界	1056.29	319.52
5-6	筆界	264.29	79.94
5-7	筆界	117.02	35.39
5-8	筆界	579.10	175.17
5-9	筆界	165.59	50.09
5-10	筆界	139.19	42.10
5-11	筆界	125.67	38.01
5-12	筆界	122.00	36.90
5-13	筆界	635.17	192.13
5-14	筆界	117.44	35.52
	筆合	5092.20	1540.32

面積 (座標法) 計算書

地番 = 5-1
測点名

	[1] X (i)	[2] X (i+1)-X (i-1)	[3] Y (i)	[4] Y (i+1)-Y (i-1)	[2] * [3]	[1] * [4]	方向角	夾角	距離
5-33K	-149642.785	14.922	-41704.615	14.725	-622316.265030	-2203490.009125	0-01-37	90-12-36	14.875
5-3	-149627.910	13.067	-41704.608	-12.153	-544954.112736	1818427.990230	261-32-35	81-30-58	12.294
5-2	-149629.718	-4.820	-41716.768	-14.761	201074.821760	2208684.267398	220-48-44	139-16-09	3.980
5-1	-149632.730	-13.114	-41719.369	-2.565	547107.805066	383807.952450	179-47-45	138-59-01	10.102
5-32K	-149642.832	-10.055	-41719.333	14.754	419487.893315	-2207830.343328	89-49-01	90-01-16	14.718
合計				倍面積 面積	400.142375 200.07	-400.142375 200.07			55.969

面積 (座標法) 計算書

地番 = 5-2
測点名

	[1] X (i)	[2] X (i+1)-X (i-1)	[3] Y (i)	[4] Y (i+1)-Y (i-1)	[2] * [3]	[1] * [4]	方向角	夾角	距離
5-8	-149683.869	14.836	-41663.298	-39.188	-618116.689128	5865811.458372	270-50-41	82-37-34	41.247
5-7K	-149683.261	-13.661	-41704.541	-41.161	569725.734601	6161112.706021	179-40-15	88-49-34	14.269
5-44K	-149697.530	-14.836	-41704.459	39.188	618727.353724	-5866346.805640	90-49-50	91-09-35	39.110
5-41	-149698.097	13.661	-41665.353	41.161	-569190.387333	-6161723.370617	8-13-07	97-23-17	14.376
合計				倍面積 面積	1146.011864 573.00	-1146.011864 573.00			109.002

面積 (座標法) 計算書

地番 = 5-3
測点名

	[1] X (i)	[2] X (i+1)-X (i-1)	[3] Y (i)	[4] Y (i+1)-Y (i-1)	[2] * [3]	[1] * [4]	方向角	夾角	距離
5-42K	-149721.024	22.908	-41668.629	39.014	-954544.953132	-5841216.030336	8-07-55	98-06-05	23.160
5-41	-149698.097	23.494	-41665.353	-35.830	-978885.803382	5363682.815510	270-49-50	82-41-55	39.110
5-44K	-149697.530	-14.060	-41704.459	-39.030	586364.693540	5842694.595900	179-42-08	88-52-18	14.627
5-37K	-149712.157	-23.475	-41704.383	0.092	979010.390925	-13773.518444	179-53-47	180-11-39	8.848
5-43K	-149721.005	-8.867	-41704.367	35.754	369792.622189	-5353124.812770	90-01-50	90-08-03	35.738
合計				倍面積 面積	1736.950140 868.47	-1736.950140 868.47			121.483

面積 (座標法) 計算書

地番 = 5-4
測点名

	[1] X (i)	[2] X (i+1)-X (i-1)	[3] Y (i)	[4] Y (i+1)-Y (i-1)	[2] * [3]	[1] * [4]	方向角	夾角	距離
5-43K	-149721.005	-3.614	-41704.367	-35.731	150719.582338	5349681.229655	179-53-23	89-51-33	3.633
5-52K	-149724.638	-3.653	-41704.360	35.219	152346.027080	-5273152.025722	90-01-57	90-08-34	35.212
5-51K	-149724.658	3.614	-41669.148	35.731	-150592.300872	-5349811.754998	8-07-40	98-05-43	3.671
5-42K	-149721.024	3.653	-41668.629	-35.219	-152215.501737	5273024.744256	270-01-50	81-54-10	35.738
合計				倍面積 面積	257.806809 128.90	-257.806809 128.90			78.254

面積 (座標法) 計算書

地番 = 5-5
測点名

	[1] X (i)	[2] X (i+1)-X (i-1)	[3] Y (i)	[4] Y (i+1)-Y (i-1)	[2] * [3]	[1] * [4]	方向角	夾角	距離
5-47	-149746.186	-23.687	-41718.968	-14.551	988197.195016	2178956.752486	179-47-56	91-00-59	23.376
5-13	-149769.562	-26.245	-41718.886	2.891	1094912.163070	-432983.803742	135-36-20	135-48-24	4.015
5-12	-149772.431	-3.377	-41716.077	39.560	140875.192029	-5924997.370360	90-47-31	135-11-11	36.755
5-24	-149772.939	10.707	-41679.326	38.576	-446260.543482	-5777640.894864	9-14-34	98-27-03	11.363
5-23K	-149761.724	25.145	-41677.501	3.810	-1047980.762645	-570592.168440	8-06-36	178-52-02	14.071
5-49K	-149747.794	13.946	-41675.516	-26.832	-581206.746136	4018032.808608	270-01-55	81-55-19	28.817
5-50K	-149747.778	1.919	-41704.333	-28.819	-80030.615027	4315581.214182	359-56-23	269-54-28	1.903
5-48	-149745.875	1.592	-41704.335	-14.635	-66393.301320	2191530.880625	268-46-57	88-50-34	14.636
合計				倍面積 面積	2112.581505 1056.29	-2112.581505 1056.29			134.936

面積 (座標法) 計算書

地番 = 5-6
測点名

	[1] X (i)	[2] X (i+1)-X (i-1)	[3] Y (i)	[4] Y (i+1)-Y (i-1)	[2] * [3]	[1] * [4]	方向角	夾角	距離
5-14	-149727.985	-18.189	-41719.022	-14.614	758827.291158	2188124.772790	179-49-48	89-46-59	18.201
5-47	-149746.186	-17.890	-41718.968	14.687	746352.337520	-2199322.233782	88-46-57	88-57-09	14.636
5-48	-149745.875	18.189	-41704.335	14.614	-758560.149315	-2188386.217250	359-56-21	91-09-24	17.878
5-40	-149727.997	17.890	-41704.354	-14.687	-746090.893060	2199055.091939	270-02-49	90-06-28	14.668
合計				倍面積 面積	528.586303 264.29	-528.586303 264.29			65.383

面積 (座標法) 計算書

地番 = 5-7
測点名

	[1] X (i)	[2] X (i+1)-X (i-1)	[3] Y (i)	[4] Y (i+1)-Y (i-1)	[2] * [3]	[1] * [4]	方向角	夾角	距離
5-31K	-149720.007	-7.966	-41719.037	-14.653	332333.848742	2193847.262571	179-53-32	89-50-43	7.978
5-14	-149727.985	-7.990	-41719.022	14.683	333334.985780	-2198456.003755	90-02-49	90-09-17	14.668
5-40	-149727.997	7.966	-41704.354	14.653	-332216.883964	-2193964.340041	359-53-32	89-50-43	7.978
5-38K	-149720.019	7.990	-41704.369	-14.683	-333217.908310	2198339.038977	270-02-49	90-09-17	14.668
合計				倍面積 面積	234.042248 117.02	-234.042248 117.02			45.292

面積 (座標法) 計算書

地番 = 5-8
測点名

	[1] X (i)	[2] X (i+1)-X (i-1)	[3] Y (i)	[4] Y (i+1)-Y (i-1)	[2] * [3]	[1] * [4]	方向角	夾角	距離
5-38K	-149720.019	7.850	-41704.369	14.654	-327379.296650	-2193997.158426	359-53-53	89-51-04	7.862
5-37K	-149712.157	22.489	-41704.383	-0.090	-937889.869287	13474.094130	359-42-08	179-48-15	14.627
5-44K	-149697.530	31.663	-41704.459	-0.174	-1320488.285317	26047.370220	359-40-13	179-58-05	17.036
5-34K	-149680.494	17.038	-41704.557	-14.721	-710562.242166	2203446.552174	270-00-28	90-20-15	14.623
5-17	-149680.492	-15.840	-41719.180	-14.562	660831.811200	2179647.324504	179-46-46	89-46-18	15.842
5-16	-149696.334	-31.667	-41719.119	0.128	1321119.341373	-19161.130752	179-45-27	179-58-41	15.825
5-15	-149712.159	-23.673	-41719.052	0.082	987615.117996	-12276.397038	179-53-26	180-07-59	7.848
5-31K	-149720.007	-7.860	-41719.037	14.683	327911.630820	-2198338.862781	90-02-49	90-09-23	14.668
合計				倍面積 面積	1158.207969 579.10	-1158.207969 579.10			108.331

面積 (座標法) 計算書

地番 = 5-9
測点名

	[1] X (i)	[2] X (i+1)-X (i-1)	[3] Y (i)	[4] Y (i+1)-Y (i-1)	[2] * [3]	[1] * [4]	方向角	夾角	距離
5-17	-149680.492	-11.294	-41719.180	14.683	471176.418920	-2197758.664036	90-00-28	90-18-44	14.623
5-34K	-149680.494	11.348	-41704.557	14.571	-473263.312836	-2180994.478074	359-44-15	89-43-47	11.350
5-6	-149669.144	11.294	-41704.609	-14.683	-471011.854046	2197592.041352	269-46-51	90-02-36	14.631
5-18	-149669.200	-11.348	-41719.240	-14.571	473429.935520	2180829.913200	179-41-44	89-54-53	11.292
合計				倍面積 面積	331.187558 165.59	-331.187558 165.59			51.896

面積 (座標法) 計算書

地番 = 5-10
測点名

	[1] X (i)	[2] X (i+1)-X (i-1)	[3] Y (i)	[4] Y (i+1)-Y (i-1)	[2] * [3]	[1] * [4]	方向角	夾角	距離
5-18	-149669.200	-9.451	-41719.240	14.672	394288.537240	-2195946.502400	89-46-51	90-01-41	14.631
5-6	-149669.144	9.555	-41704.609	14.623	-398487.538995	-2188611.892712	359-57-06	90-10-15	9.499
5-5	-149659.645	9.451	-41704.617	-14.672	-394150.335267	2195806.311440	269-48-45	89-51-39	14.664
5-19	-149659.693	-9.555	-41719.281	-14.623	398627.729955	2188473.690739	179-45-10	89-56-25	9.507
合計				倍面積 面積	278.392933 139.19	-278.392933 139.19			48.301

面積 (座標法) 計算書

地番 = 5-11
測点名

	[1] X (i)	[2] X (i+1)-X (i-1)	[3] Y (i)	[4] Y (i+1)-Y (i-1)	[2] * [3]	[1] * [4]	方向角	夾角	距離
5-19	-149659.693	-8.519	-41719.281	14.694	355406.554839	-2199099.528942	89-48-45	90-00-47	14.664
5-5	-149659.645	8.607	-41704.617	14.660	-358951.638519	-2194010.395700	359-58-24	90-09-39	8.559
5-4	-149651.086	8.519	-41704.621	-14.694	-355281.666299	2198973.057684	269-50-38	89-52-14	14.690
5-20	-149651.126	-8.607	-41719.311	-14.660	359078.109777	2193885.507160	179-47-58	89-57-20	8.567
合計				倍面積 面積	251.359798 125.67	-251.359798 125.67			46.480

面積 (座標法) 計算書

地番 = 5-12
測点名

	[1] X (i)	[2] X (i+1)-X (i-1)	[3] Y (i)	[4] Y (i+1)-Y (i-1)	[2] * [3]	[1] * [4]	方向角	夾角	距離
5-32K	-149642.832	-8.341	-41719.333	-14.696	347980.956553	2199151.059072	179-50-53	90-01-52	8.294
5-20	-149651.126	-8.254	-41719.311	14.712	344351.192994	-2201667.365712	89-50-38	89-59-45	14.690
5-4	-149651.086	8.341	-41704.621	14.696	-347858.243761	-2199272.359856	0-02-29	90-11-51	8.301
5-33K	-149642.785	8.254	-41704.615	-14.712	-344229.892210	2201544.652920	269-49-01	89-46-32	14.718
合計				倍面積 面積	244.013576 122.00	-244.013576 122.00			46.003

面積 (座標法) 計算書

地番 = 5-13
測点名

	[1] X (i)	[2] X (i+1)-X (i-1)	[3] Y (i)	[4] Y (i+1)-Y (i-1)	[2] * [3]	[1] * [4]	方向角	夾角	距離
5-49K	-149747.794	7.714	-41675.516	29.919	-321484.930424	-4480304.248686	8-06-49	98-04-54	7.808
5-22K	-149740.064	7.628	-41674.414	4.142	-317892.429992	-620223.345088	91-55-18	263-48-29	3.042
5-21	-149740.166	12.048	-41671.374	4.786	-502056.713952	-716656.434476	8-10-39	96-15-21	12.275
5-27	-149728.016	12.169	-41669.628	-32.980	-507077.703132	4938029.967680	270-01-53	81-51-14	34.726
5-40	-149727.997	-17.859	-41704.354	-34.707	744798.058086	5196609.591879	179-56-21	89-54-28	17.878
5-48	-149745.875	-19.781	-41704.335	0.021	824953.450635	-3144.663375	179-56-23	180-00-02	1.903
5-50K	-149747.778	-1.919	-41704.333	28.819	80030.615027	-4315581.214182	90-01-55	90-05-32	28.817
合計				倍面積 面積	1270.346248 635.17	-1270.346248 635.17			106.449

面積 (座標法) 計算書

地番 = 5-14
測点名

	[1] X (i)	[2] X (i+1)-X (i-1)	[3] Y (i)	[4] Y (i+1)-Y (i-1)	[2] * [3]	[1] * [4]	方向角	夾角	距離
5-52K	-149724.638	-3.339	-41704.360	-35.206	139250.858040	5271205.605428	179-53-52	89-51-55	3.359
5-40	-149727.997	-3.378	-41704.354	34.732	140877.307812	-5200352.791804	90-01-53	90-08-01	34.726
5-27	-149728.016	3.339	-41669.628	35.206	-139134.887892	-5271324.531296	8-08-06	98-06-13	3.392
5-51K	-149724.658	3.378	-41669.148	-34.732	-140758.381944	5200236.821656	270-01-57	81-53-51	35.212
合計				倍面積 面積	234.896016 117.44	-234.896016 117.44			76.689