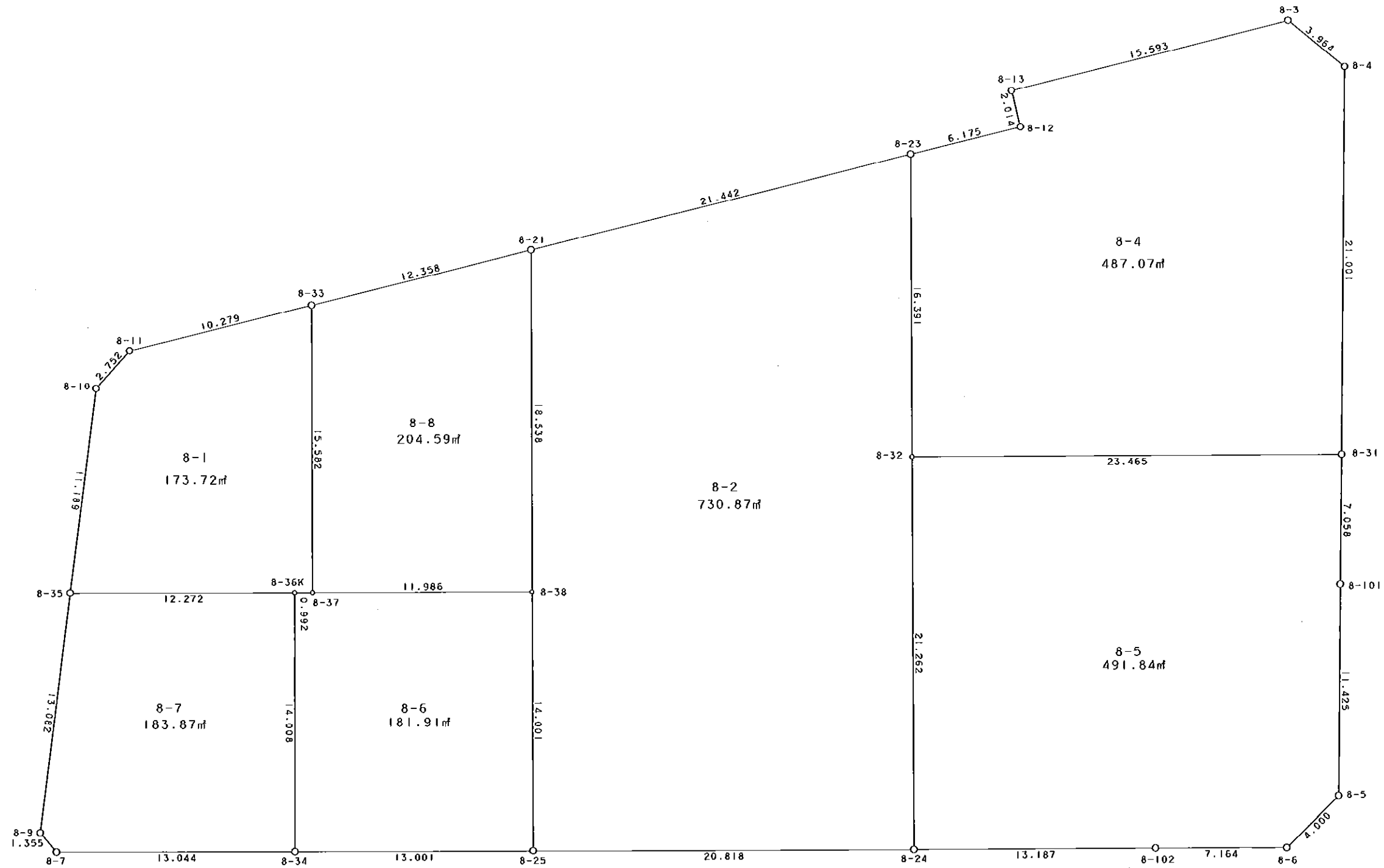


8街区



S = 1 / 250



凡 例

記号	名称
⊙	地区界点
○	街区点
○	画地点(折れ点)
┆	画地点(直線中)

地番	筆種別	面積	坪数
8-1	筆界	173.72	52.55
8-2	筆界	730.87	221.08
8-4	筆界	487.07	147.34
8-5	筆界	491.84	148.78
8-6	筆界	181.91	55.03
8-7	筆界	183.87	55.62
8-8	筆界	204.59	61.89
	筆合	2453.87	742.29

面積 (座標法) 計算書

地番 = 8-1
測点名

	[1] X (i)	[2] X (i+1)-X (i-1)	[3] Y (i)	[4] Y (i+1)-Y (i-1)	[2]*[3]	[1]*[4]	方向角	夾角	距離
8-11	-149665.331	-4.316	-41591.355	-11.884	179508.288180	1778622.793604	222-38-37	145-31-41	2.752
8-10	-149667.355	-13.099	-41593.219	-3.457	544829.575681	517400.046235	188-11-07	145-32-30	11.189
8-35	-149678.430	-11.252	-41594.812	10.678	468024.824624	-1598266.275540	90-49-35	82-38-28	12.272
8-36K	-149678.607	-0.190	-41582.541	13.263	7900.682790	-1985187.364641	90-45-03	179-55-28	0.992
8-37	-149678.620	15.568	-41581.549	1.206	-647341.554832	-180512.415720	0-47-13	90-02-10	15.582
8-33	-149663.039	13.289	-41581.335	-9.806	-552574.360815	1467595.760434	257-06-56	76-19-43	10.279
合計				倍面積 面積	347.455628 173.72	-347.455628 173.72			53.066

面積 (座標法) 計算書

地番 = 8-2
測点名

	[1] X (i)	[2] X (i+1)-X (i-1)	[3] Y (i)	[4] Y (i+1)-Y (i-1)	[2]*[3]	[1]*[4]	方向角	夾角	距離
8-21	-149660.252	-23.351	-41569.295	-21.163	970684.607545	3167259.913076	180-49-53	103-48-31	18.538
8-38	-149678.788	-32.536	-41569.564	-0.463	1352507.334304	69301.278844	180-47-38	179-57-45	14.001
8-25	-149692.788	-14.298	-41569.758	20.622	594364.399884	-3086964.674136	90-49-13	90-01-35	20.818
8-24	-149693.086	20.962	-41548.942	21.125	-870948.922204	-3162266.441750	0-49-58	90-00-45	21.262
8-32	-149671.826	37.649	-41548.633	0.541	-1564264.483817	-80972.457866	0-48-40	179-58-42	16.391
8-23	-149655.437	11.574	-41548.401	-20.662	-480881.193174	3092180.639294	257-01-22	76-12-42	21.442
合計				倍面積 面積	1461.742538 730.87	-1461.742538 730.87			112.452

面積 (座標法) 計算書

地番 = 8-4
測点名

	[1] X (i)	[2] X (i+1)-X (i-1)	[3] Y (i)	[4] Y (i+1)-Y (i-1)	[2]*[3]	[1]*[4]	方向角	夾角	距離
8-23	-149655.437	-17.761	-41548.401	-6.253	737941.150161	935795.447561	180-48-40	103-38-52	16.391
8-32	-149671.826	-16.701	-41548.633	23.231	693903.719733	-3477026.189806	90-45-43	89-57-03	23.465
8-31	-149672.138	20.681	-41525.170	24.037	-858782.040770	-3597669.181106	1-33-58	90-48-15	21.001
8-4	-149651.145	23.532	-41524.596	-2.470	-977156.793072	369638.328150	309-49-53	128-15-55	3.964
8-3	-149648.606	-0.958	-41527.640	-18.240	39783.479120	2729590.573440	257-02-25	127-12-32	15.593
8-13	-149652.103	-5.459	-41542.836	-14.740	226782.341724	2205871.998220	166-54-57	89-52-32	2.014
8-12	-149654.065	-3.334	-41542.380	-5.565	138502.294920	832824.871725	257-09-48	270-14-51	6.175
合計				倍面積 面積	974.151816 487.07	-974.151816 487.07			88.603

面積 (座標法) 計算書

地番 = 8-5

測点名	[1] X (i)	[2] X (i+1)-X (i-1)	[3] Y (i)	[4] Y (i+1)-Y (i-1)	[2] * [3]	[1] * [4]	方向角	夾角	距離
8-32	-149671.826	-20.948	-41548.633	-23.772	870360.764084	3557998.647672	180-49-58	90-04-15	21.262
8-24	-149693.086	-21.438	-41548.942	12.877	890726.218596	-1927597.868422	90-46-24	89-56-26	13.187
8-102	-149693.264	-0.292	-41535.756	20.349	12128.440752	-3046108.229136	90-54-42	180-08-18	7.164
8-6	-149693.378	2.651	-41528.593	10.054	-110092.300043	-1505017.222412	46-16-34	135-21-52	4.000
8-5	-149690.613	14.185	-41525.702	3.212	-589042.082870	-480806.248956	1-36-36	135-20-02	11.425
8-101	-149679.193	18.475	-41525.381	0.532	-767181.413975	-79629.330676	1-42-47	180-06-11	7.058
8-31	-149672.138	7.367	-41525.170	-23.252	-305915.927390	3480176.552776	270-45-43	89-02-56	23.465
合計				倍面積 面積	983.699154 491.84	-983.699154 491.84			87.561

面積 (座標法) 計算書

地番 = 8-6

測点名	[1] X (i)	[2] X (i+1)-X (i-1)	[3] Y (i)	[4] Y (i+1)-Y (i-1)	[2] * [3]	[1] * [4]	方向角	夾角	距離
8-36K	-149678.607	-13.993	-41582.541	-1.209	581864.496213	180961.435863	180-53-15	90-08-12	14.008
8-34	-149692.613	-14.181	-41582.758	12.783	589685.091198	-1913520.671979	90-46-16	89-53-01	13.001
8-25	-149692.788	13.825	-41569.758	13.194	-574701.904350	-1975046.644872	0-47-38	90-01-22	14.001
8-38	-149678.788	14.168	-41569.564	-11.791	-588957.582752	1764862.589308	270-48-11	90-00-33	11.986
8-37	-149678.620	0.181	-41581.549	-12.977	-7526.260369	1942379.451740	270-45-03	179-56-52	0.992
合計				倍面積 面積	363.839940 181.91	-363.839940 181.91			53.988

面積 (座標法) 計算書

地番 = 8-7

測点名	[1] X (i)	[2] X (i+1)-X (i-1)	[3] Y (i)	[4] Y (i+1)-Y (i-1)	[2] * [3]	[1] * [4]	方向角	夾角	距離
8-35	-149678.430	-12.773	-41594.812	-14.127	531290.533676	2114507.180610	188-09-22	97-19-47	13.082
8-9	-149691.380	-13.991	-41596.668	-0.989	581978.981988	148044.774820	140-12-38	132-03-16	1.355
8-7	-149692.421	-1.233	-41595.801	13.910	51287.622633	-2082221.576110	90-50-36	130-37-58	13.044
8-34	-149692.613	13.814	-41582.758	13.260	-574424.219012	-1984924.048380	0-53-15	90-02-39	14.008
8-36K	-149678.607	14.183	-41582.541	-12.054	-589765.179003	1804225.928778	270-49-35	89-56-20	12.272
合計				倍面積 面積	367.740282 183.87	-367.740282 183.87			53.761

面積 (座標法) 計算書

地番 = 8-8

測点名	[1] X (i)	[2] X (i+1)-X (i-1)	[3] Y (i)	[4] Y (i+1)-Y (i-1)	[2] * [3]	[1] * [4]	方向角	夾角	距離
8-33	-149663.039	-18.368	-41581.335	-12.254	763765.961280	1833970.879906	180-47-13	103-49-12	15.582
8-37	-149678.620	-15.749	-41581.549	11.771	654867.815201	-1761867.036020	90-48-11	90-00-58	11.986
8-38	-149678.788	18.368	-41569.564	12.254	-763549.751552	-1834163.868152	0-49-53	90-01-42	18.538
8-21	-149660.252	15.749	-41569.295	-11.771	-654674.826955	1761650.826292	256-58-01	76-08-08	12.358
合計				倍面積 面積	409.197974 204.59	-409.197974 204.59			58.464