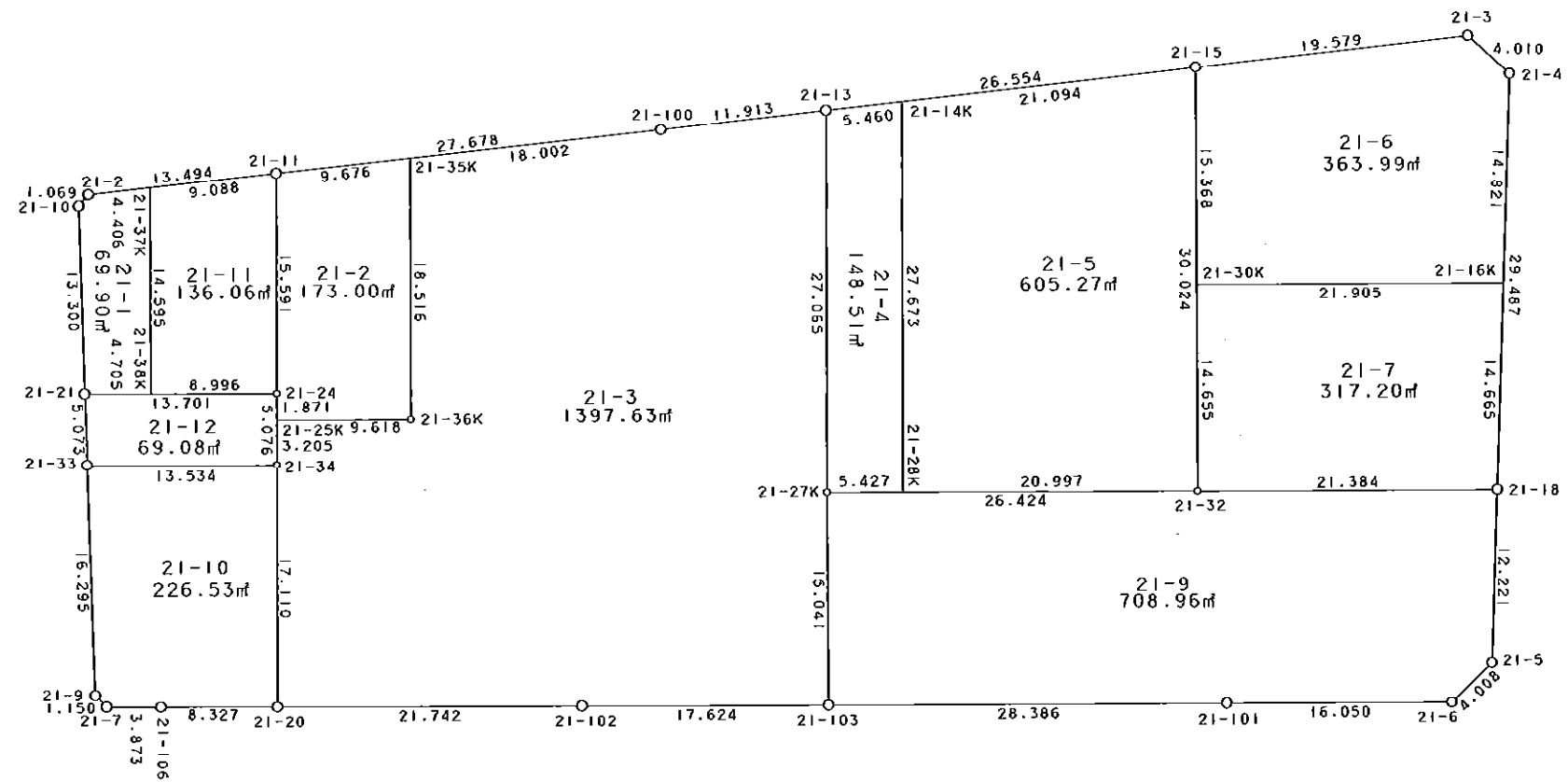


西部第5地区土地区画整理事業 出来形確認測量 (原子図)

21街区



S = 1 / 500



凡例

記号	名称
⊙	地区界点
○	街区点
○	画地点 (折れ点)
┆	画地点 (直線中)

地番	筆種別	面積	坪数
21-1	筆界	69.90	21.14
21-2	筆界	173.00	52.33
21-3	筆界	1397.63	422.78
21-4	筆界	148.51	44.92
21-5	筆界	605.27	183.09
21-6	筆界	363.99	110.10
21-7	筆界	317.20	95.95
21-9	筆界	708.96	214.46
21-10	筆界	226.53	68.52
21-11	筆界	136.06	41.15
21-12	筆界	69.08	20.89
	合計	4216.13	1275.33

面積 (座標法) 計算書

地番 = 21-1
測点名

	[1] X (i)	[2] X (i+1)-X (i-1)	[3] Y (i)	[4] Y (i+1)-Y (i-1)	[2]*[3]	[1]*[4]	方向角	夾角	距離
21-2	-149922.236	-1.238	-41601.289	-5.083	51502.395782	762054.725588	220-45-09	136-19-38	1.069
21-10	-149923.046	-14.108	-41601.987	-0.463	586920.832596	69414.370298	178-59-15	138-14-06	13.300
21-21	-149936.344	-13.356	-41601.752	4.940	555632.999712	-740685.539360	90-42-23	91-43-08	4.705
21-38K	-149936.402	14.536	-41597.047	4.848	-604654.675192	-726891.676896	0-33-41	89-51-18	14.595
21-37K	-149921.808	14.166	-41596.904	-4.242	-589261.742064	635968.309536	264-25-31	83-51-50	4.406
合計				倍面積 面積	139.810834 69.90	-139.810834 69.90			38.075

面積 (座標法) 計算書

地番 = 21-2
測点名

	[1] X (i)	[2] X (i+1)-X (i-1)	[3] Y (i)	[4] Y (i+1)-Y (i-1)	[2]*[3]	[1]*[4]	方向角	夾角	距離
21-35K	-149919.990	17.581	-41578.228	-9.398	-730986.826468	1408948.066020	264-27-39	83-44-23	9.676
21-11	-149920.924	-16.524	-41587.859	-9.824	687197.782116	1472823.157376	180-42-33	96-14-54	15.591
21-24	-149936.514	-17.461	-41588.052	-0.219	726168.975972	32836.096566	180-47-46	180-05-13	1.871
21-25K	-149938.385	-1.991	-41588.078	9.591	82801.863298	-1438059.050535	90-42-54	89-55-08	9.618
21-36K	-149938.505	18.395	-41578.461	9.850	-764835.790095	-1476894.274250	0-43-16	90-00-22	18.516
合計				倍面積 面積	346.004823 173.00	-346.004823 173.00			55.272

面積 (座標法) 計算書

地番 = 21-3
測点名

	[1] X (i)	[2] X (i+1)-X (i-1)	[3] Y (i)	[4] Y (i+1)-Y (i-1)	[2]*[3]	[1]*[4]	方向角	夾角	距離
21-35K	-149919.990	-20.253	-41578.228	-18.151	842083.851684	2721197.738490	180-43-16	96-15-41	18.516
21-36K	-149938.505	-18.395	-41578.461	-9.850	764835.790095	1476894.274250	270-42-54	269-59-38	9.618
21-25K	-149938.385	-3.085	-41588.078	-9.661	128299.220630	1448554.737485	180-47-12	90-04-18	3.205
21-34	-149941.590	-20.314	-41588.122	-0.252	844821.110308	37785.280680	180-41-48	179-54-36	17.110
21-20	-149958.699	-17.370	-41588.330	21.532	722389.292100	-3228910.706868	90-41-16	89-59-28	21.742
21-102	-149958.960	-0.491	-41566.590	39.362	20409.195690	-5902684.583520	90-44-52	180-03-36	17.624
21-103	-149959.190	14.810	-41548.968	17.753	-615340.216080	-2662225.500070	0-29-57	89-45-05	15.041
21-27K	-149944.150	42.102	-41548.837	0.514	-1749289.135374	-77071.293100	0-48-39	180-18-42	27.065
21-13	-149917.088	25.898	-41548.454	-11.473	-1076021.861692	1719998.750624	264-23-34	83-34-55	11.913
21-100	-149918.252	-2.902	-41560.310	-29.774	120608.019620	4463666.035048	264-27-35	180-04-01	18.002
合計				倍面積 面積	2795.266981 1397.63	-2795.266981 1397.63			159.836

面積 (座標法) 計算書

地番 = 21-4

測点名	[1] X (i)	[2] X (i+1)-X (i-1)	[3] Y (i)	[4] Y (i+1)-Y (i-1)	[2] * [3]	[1] * [4]	方向角	夾角	距離
21-14K	-149916.559	27.141	-41543.020	-5.043	-1127519.105820	756029.207037	264-26-23	83-37-49	5.460
21-13	-149917.088	-27.591	-41548.454	-5.817	1146363.394314	872067.700896	180-48-39	96-22-16	27.065
21-27K	-149944.150	-27.141	-41548.837	5.043	1127676.985017	-756168.348450	90-50-03	90-01-24	5.427
21-28K	-149944.229	27.591	-41543.411	5.817	-1146224.252901	-872225.580093	0-48-34	89-58-31	27.673
合計				倍面積 面積	297.020610 148.51	-297.020610 148.51			65.625

面積 (座標法) 計算書

地番 = 21-5

測点名	[1] X (i)	[2] X (i+1)-X (i-1)	[3] Y (i)	[4] Y (i+1)-Y (i-1)	[2] * [3]	[1] * [4]	方向角	夾角	距離
21-28K	-149944.229	-27.977	-41543.411	20.604	1162260.009547	-3089450.894316	90-50-16	90-01-42	20.997
21-32	-149944.536	29.714	-41522.416	21.386	-1233797.069024	-3206713.846896	0-44-46	89-54-30	30.024
21-15	-149914.515	27.977	-41522.025	-20.604	-1161661.693425	3088838.667060	264-26-22	83-41-36	21.094
21-14K	-149916.559	-29.714	-41543.020	-21.386	1234409.296280	3206115.530774	180-48-34	96-22-12	27.673
合計				倍面積 面積	1210.543378 605.27	-1210.543378 605.27			99.788

面積 (座標法) 計算書

地番 = 21-6

測点名	[1] X (i)	[2] X (i+1)-X (i-1)	[3] Y (i)	[4] Y (i+1)-Y (i-1)	[2] * [3]	[1] * [4]	方向角	夾角	距離
21-16K	-149930.159	14.527	-41500.322	22.622	-602875.177694	-3391720.056898	2-46-50	92-03-22	14.821
21-4	-149915.355	17.537	-41499.603	-2.216	-727778.537811	332212.426680	312-57-32	130-10-42	4.010
21-3	-149912.622	0.840	-41502.538	-22.422	-34862.131920	3361340.810484	264-27-06	131-29-34	19.579
21-15	-149914.515	-17.260	-41522.025	-19.687	716670.151500	2951367.056805	180-44-44	96-17-38	15.368
21-30K	-149929.882	-15.644	-41522.225	21.703	649573.687900	-3253928.229046	90-43-28	89-58-44	21.905
合計				倍面積 面積	727.991975 363.99	-727.991975 363.99			75.683

面積 (座標法) 計算書

地番 = 21-7

測点名	[1] X (i)	[2] X (i+1)-X (i-1)	[3] Y (i)	[4] Y (i+1)-Y (i-1)	[2] * [3]	[1] * [4]	方向角	夾角	距離
21-30K	-149929.882	-14.377	-41522.225	-22.094	596965.028825	3312550.812908	180-44-48	90-01-20	14.655
21-32	-149944.536	-14.925	-41522.416	21.191	619722.058800	-3177474.662376	90-43-34	89-58-46	21.384
21-18	-149944.807	14.377	-41501.034	22.094	-596660.365818	-3312880.565858	2-46-58	92-03-24	14.665
21-16K	-149930.159	14.925	-41500.322	-21.191	-619392.305850	3177169.999369	270-43-28	87-56-30	21.905
合計				倍面積 面積	634.415957 317.20	-634.415957 317.20			72.609

面積 (座標法) 計算書

地番 = 21-9

測点名	[1] X (i)	[2] X (i+1)-X (i-1)	[3] Y (i)	[4] Y (i+1)-Y (i-1)	[2] * [3]	[1] * [4]	方向角	夾角	距離
21-27K	-149944.150	-14.654	-41548.837	-26.552	608856.657398	3981317.070800	180-29-57	89-39-44	15.041
21-103	-149959.190	-15.393	-41548.968	28.253	639563.264424	-4236796.995070	90-42-45	90-12-48	28.386
21-101	-149959.543	-0.579	-41520.584	44.432	24040.418136	-6663002.414576	90-48-25	180-05-40	16.050
21-6	-149959.769	2.529	-41504.536	18.959	-104964.971544	-2843087.260471	46-34-38	135-46-13	4.008
21-5	-149957.014	14.962	-41501.625	3.502	-620947.313250	-525149.463028	2-46-18	136-11-40	12.221
21-18	-149944.807	12.478	-41501.034	-20.791	-517849.902252	3117502.482337	270-43-34	87-57-16	21.384
21-32	-149944.536	0.657	-41522.416	-47.803	-27280.227312	7167798.654408	270-50-13	180-06-39	26.424
合計					1417.925600	-1417.925600			123.514
				倍面積 面積	708.96	708.96			

面積 (座標法) 計算書

地番 = 21-10

測点名	[1] X (i)	[2] X (i+1)-X (i-1)	[3] Y (i)	[4] Y (i+1)-Y (i-1)	[2] * [3]	[1] * [4]	方向角	夾角	距離
21-33	-149941.416	-16.118	-41601.655	-13.208	670535.475290	1980426.222528	178-51-26	88-07-14	16.295
21-9	-149957.708	-17.117	-41601.330	1.126	712089.965610	-168852.379208	135-50-44	136-59-18	1.150
21-7	-149958.533	-0.885	-41600.529	4.674	36816.468165	-700906.183242	90-53-15	135-02-31	3.873
21-106	-149958.593	-0.166	-41596.656	12.199	6905.044896	-1829344.876007	90-43-46	179-50-31	8.327
21-20	-149958.699	17.003	-41588.330	8.534	-707126.374990	-1279747.537266	0-41-48	89-58-02	17.110
21-34	-149941.590	17.283	-41588.122	-13.325	-718767.512526	1997971.686750	270-44-12	90-02-24	13.534
合計					453.066445	-453.066445			60.289
				倍面積 面積	226.53	226.53			

面積 (座標法) 計算書

地番 = 21-11

測点名	[1] X (i)	[2] X (i+1)-X (i-1)	[3] Y (i)	[4] Y (i+1)-Y (i-1)	[2] * [3]	[1] * [4]	方向角	夾角	距離
21-37K	-149921.808	-15.478	-41596.904	-9.188	643836.880112	1377481.571904	180-33-41	96-08-36	14.595
21-38K	-149936.402	-14.706	-41597.047	8.852	611726.173182	-1327237.030504	90-42-48	90-09-07	8.996
21-24	-149936.514	15.478	-41588.052	9.188	-643699.868856	-1377616.690632	0-42-33	89-59-45	15.591
21-11	-149920.924	14.706	-41587.859	-8.852	-611591.054454	1327100.019248	264-25-05	83-42-32	9.088
合計					272.129984	-272.129984			48.270
				倍面積 面積	136.06	136.06			

面積 (座標法) 計算書

地番 = 21-12

測点名	[1] X (i)	[2] X (i+1)-X (i-1)	[3] Y (i)	[4] Y (i+1)-Y (i-1)	[2] * [3]	[1] * [4]	方向角	夾角	距離
21-21	-149936.344	-4.902	-41601.752	-13.603	203931.788304	2039584.087432	178-54-16	88-11-37	5.073
21-33	-149941.416	-5.246	-41601.655	13.630	218242.282130	-2043701.500080	90-44-12	91-49-56	13.534
21-34	-149941.590	4.902	-41588.122	13.603	-203864.974044	-2039655.448770	0-47-24	90-03-12	5.076
21-24	-149936.514	5.246	-41588.052	-13.630	-218170.920792	2043634.685820	270-42-39	89-55-15	13.701
合計					138.175598	-138.175598			37.384
				倍面積 面積	69.08	69.08			