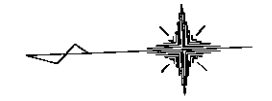
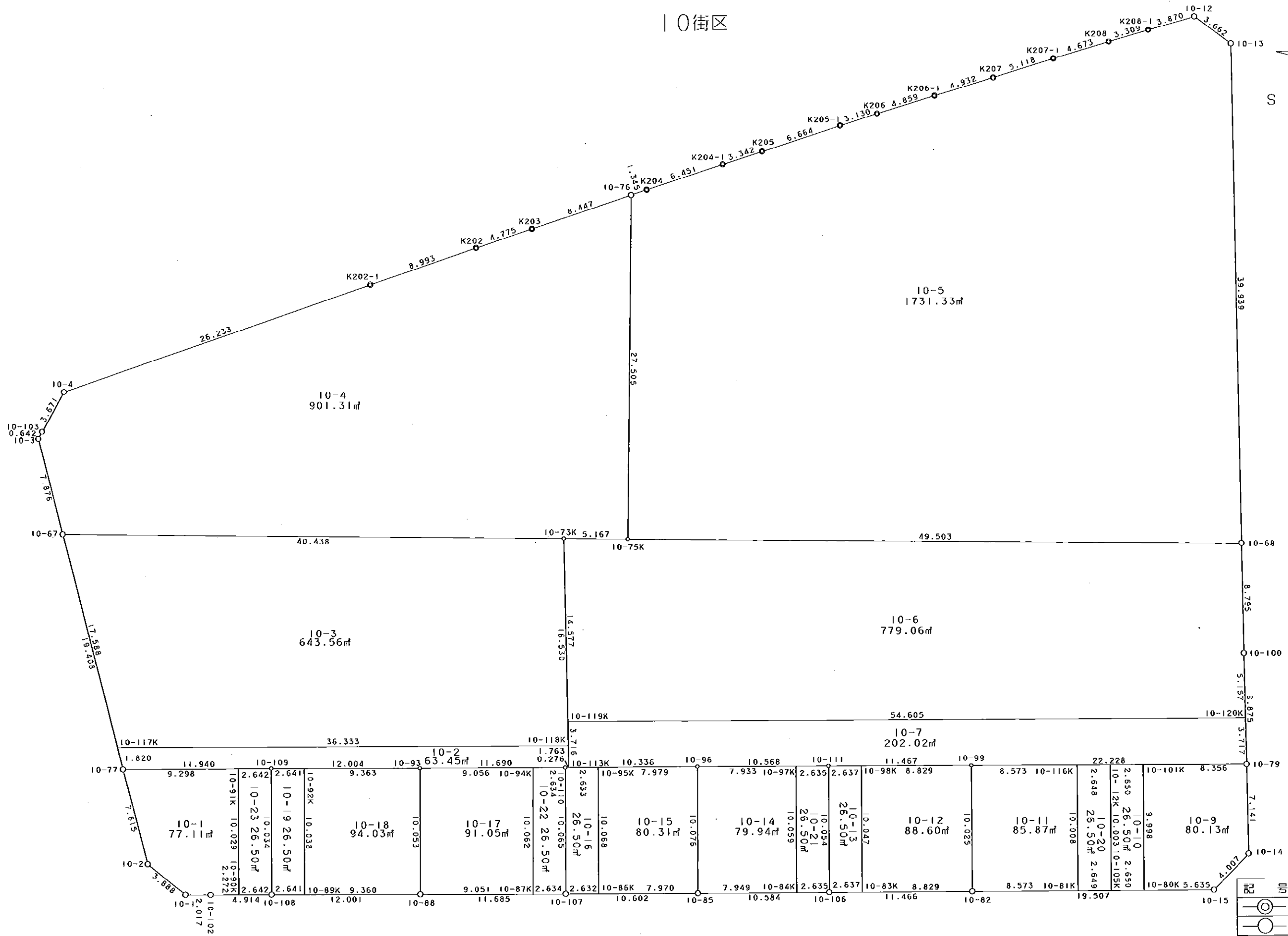


西部第5地区土地区画整理事業 出来形確認測量 (原子図)

10街区



S = 1 / 300



記号	名称
⊙	地区界点
○	街区点
○	画地点(折れ点)
┆	画地点(直線中)

地番	筆種別	面積	坪数
10-1	筆界	77.11	23.32
10-2	筆界	63.45	19.19
10-3	筆界	643.56	194.67
10-4	筆界	901.31	272.64
10-5	筆界	1731.33	523.72
10-6	筆界	779.06	235.66
10-7	筆界	202.02	61.11
10-9	筆界	80.13	24.24
10-10	筆界	26.50	8.01
10-11	筆界	85.87	25.97
10-12	筆界	88.60	26.80
10-13	筆界	26.50	8.01
10-14	筆界	79.94	24.18
10-15	筆界	80.31	24.29
10-16	筆界	26.50	8.01
10-17	筆界	91.05	27.54
10-18	筆界	94.03	28.44
10-19	筆界	26.50	8.01
10-20	筆界	26.50	8.01
10-21	筆界	26.50	8.01
10-22	筆界	26.50	8.01
10-23	筆界	26.50	8.01
	合計	5209.77	1575.85

面積 (座標法) 計算書

地番 = 10-1
測点名

	[1] X (i)	[2] X (i+1)-X (i-1)	[3] Y (i)	[4] Y (i+1)-Y (i-1)	[2]*[3]	[1]*[4]	方向角	夾角	距離
10-91K	-149653.465	9.010	-41508.620	10.263	-373992.666200	-1535893.511295	1-28-00	89-50-18	9.298
10-77	-149644.170	7.535	-41508.382	-7.376	-312765.658370	1103775.397920	256-59-04	75-31-04	7.815
10-2	-149645.930	-4.723	-41515.996	-10.131	196080.049108	1516062.916830	220-20-50	143-21-46	3.888
10-1	-149648.893	-4.979	-41518.513	-2.587	206720.676227	387141.686191	181-59-19	141-38-29	2.017
10-102	-149650.909	-4.287	-41518.583	-0.132	177990.165321	19753.919988	181-33-50	179-34-31	2.272
10-90K	-149653.180	-2.556	-41518.645	9.963	106121.656620	-1490994.632340	91-37-42	90-03-52	10.029
合計				倍面積 面積	154.222706 77.11	-154.222706 77.11			35.319

面積 (座標法) 計算書

地番 = 10-2
測点名

	[1] X (i)	[2] X (i+1)-X (i-1)	[3] Y (i)	[4] Y (i+1)-Y (i-1)	[2]*[3]	[1]*[4]	方向角	夾角	距離
10-117K	-149643.765	35.915	-41506.608	-0.804	-1490709.826320	120313.587060	257-08-24	75-36-37	1.820
10-77	-149644.170	-12.341	-41508.382	-2.079	512254.942262	311110.229430	181-27-50	104-19-26	11.940
10-109	-149656.106	-23.935	-41508.687	-0.635	993510.423345	95031.627310	181-34-31	180-06-41	12.004
10-93	-149668.105	-23.685	-41509.017	-0.647	983141.067645	96835.263935	181-33-14	179-58-43	11.690
10-110	-149679.791	-11.962	-41509.334	-0.324	496534.653308	48496.252284	181-27-10	179-53-56	0.276
10-113K	-149680.067	-0.294	-41509.341	1.756	12203.746254	-262838.197652	90-35-06	89-07-56	1.763
10-118K	-149680.085	36.302	-41507.578	2.733	-1506808.096556	-409075.672305	1-31-47	90-56-41	36.333
合計				倍面積 面積	126.909938 63.45	-126.909938 63.45			75.826

面積 (座標法) 計算書

地番 = 10-3
測点名

	[1] X (i)	[2] X (i+1)-X (i-1)	[3] Y (i)	[4] Y (i+1)-Y (i-1)	[2]*[3]	[1]*[4]	方向角	夾角	距離
10-118K	-149680.085	-36.491	-41507.578	15.559	1514653.028798	-2328872.442515	90-35-34	89-03-47	16.530
10-73K	-149680.256	40.236	-41491.049	18.117	-1669433.847564	-2711757.197952	2-15-02	91-39-28	40.438
10-67	-149639.849	36.491	-41489.461	-15.559	-1513991.921351	2328246.410591	257-08-08	74-53-06	17.588
10-117K	-149643.765	-40.236	-41506.608	-18.117	1670059.879488	2711096.090505	181-31-47	104-23-39	36.333
合計				倍面積 面積	1287.139371 643.56	-1287.139371 643.56			110.889

面積 (座標法) 計算書

地番 = 10-4
測点名

	[1] X (i)	[2] X (i+1)-X (i-1)	[3] Y (i)	[4] Y (i+1)-Y (i-1)	[2]*[3]	[1]*[4]	方向角	夾角	距離
10-67	-149639.849	-42.168	-41489.461	-9.265	1749527.591448	1386413.200985	182-15-02	105-10-12	40.438
10-73K	-149680.256	-45.569	-41491.049	-1.804	1890705.611881	270023.181824	182-23-46	180-08-44	5.167
10-75K	-149685.418	-6.325	-41491.265	27.264	262432.251125	-4081023.236352	92-25-24	90-01-38	27.505
10-76	-149686.581	6.927	-41463.785	25.051	-287219.638695	-3749798.540631	343-17-16	70-51-52	8.447
K203	-149678.491	12.658	-41466.214	-3.821	-524879.336812	571921.514111	343-03-09	179-45-53	4.775
K202	-149673.923	13.158	-41467.606	-4.055	-545630.759748	606927.757765	342-46-33	179-43-24	8.993
K202-1	-149665.333	33.635	-41470.269	-10.469	-1394852.497815	1566846.371177	342-41-20	179-54-47	26.233
10-4	-149640.288	26.931	-41478.075	-10.955	-1117046.037825	1639309.355040	300-55-06	138-13-46	3.671
10-103	-149638.402	2.200	-41481.224	-3.709	-91258.692800	555008.833018	299-16-48	178-21-42	0.642
10-3	-149638.088	-1.447	-41481.784	-8.237	60024.141448	1232568.930856	257-04-50	137-48-02	7.876
合計				倍面積 面積	1802.632207 901.31	-1802.632207 901.31			133.747

面積 (座標法) 計算書

地番 = 10-5
測点名

	[1] X (i)	[2] X (i+1)-X (i-1)	[3] Y (i)	[4] Y (i+1)-Y (i-1)	[2]*[3]	[1]*[4]	方向角	夾角	距離
10-75K	-149685.418	-48.297	-41491.265	-29.547	2003903.625705	4422755.045646	182-23-35	89-58-11	49.503
10-68	-149734.878	-50.018	-41493.332	37.868	2075413.479976	-5670160.360104	90-48-02	88-24-27	39.939
10-13	-149735.436	2.316	-41453.397	42.204	-96006.067452	-6319434.340944	38-17-27	127-29-25	3.662
10-12	-149732.562	6.627	-41451.128	1.323	-274696.625256	-198096.179526	345-51-09	127-33-42	3.870
K208-1	-149728.809	6.958	-41452.074	-1.770	-288423.530892	265019.991930	345-34-54	179-43-45	3.309
K208	-149725.604	7.722	-41452.898	-2.021	-320099.278356	302595.445684	345-09-28	179-34-34	4.673
K207-1	-149721.087	9.459	-41454.095	-2.529	-392114.284605	378644.629023	344-54-57	179-45-29	5.118
K207	-149716.145	9.703	-41455.427	-2.620	-402242.008181	392256.299900	344-51-43	179-56-46	4.932
K206-1	-149711.384	9.447	-41456.715	-2.572	-391641.586605	385057.679648	344-40-36	179-48-53	4.859
K206	-149706.698	7.699	-41457.999	-2.131	-319185.134301	319024.973438	344-17-55	179-37-19	3.130
K205-1	-149703.685	9.424	-41458.846	-2.667	-390708.164704	399259.727895	344-09-05	179-51-10	6.664
K205	-149697.274	9.622	-41460.666	-2.747	-398934.528252	411218.411678	343-53-49	179-44-44	3.342
K204-1	-149694.063	9.402	-41461.593	-2.740	-389821.897386	410161.732620	343-40-39	179-46-50	6.451
K204	-149687.872	7.482	-41463.406	-2.192	-310229.203692	328115.815424	343-38-21	179-57-42	1.345
10-76	-149686.581	2.454	-41463.785	-27.859	-101752.128390	4170118.460079	272-25-24	108-47-03	27.505
合計				倍面積 面積	3462.667609 1731.33	-3462.667609 1731.33			168.302

面積 (座標法) 計算書

地番 = 10-6
測点名

	[1] X (i)	[2] X (i+1)-X (i-1)	[3] Y (i)	[4] Y (i+1)-Y (i-1)	[2]*[3]	[1]*[4]	方向角	夾角	距離
10-120K	-149734.685	-54.642	-41507.283	3.499	2268040.957686	-523921.662815	90-41-20	88-56-56	5.157
10-100	-149734.747	-0.193	-41502.126	13.951	8009.910318	-2088949.455397	90-51-12	180-09-52	8.795
10-68	-149734.878	49.329	-41493.332	10.861	-2046824.574228	-1626270.509958	2-23-35	91-32-23	49.503
10-75K	-149685.418	54.622	-41491.265	2.283	-2266335.876830	-341731.809294	2-23-46	180-00-11	5.167
10-73K	-149680.256	5.313	-41491.049	-14.360	-220441.943337	2149408.476160	270-35-37	88-11-51	14.577
10-119K	-149680.105	-54.429	-41505.625	-16.234	2259109.663125	2429906.824570	181-44-24	91-08-47	54.605
合計				倍面積 面積	1558.136734 779.06	-1558.136734 779.06			137.804

面積 (座標法) 計算書

地番 = 10-7
測点名

	[1] X (i)	[2] X (i+1)-X (i-1)	[3] Y (i)	[4] Y (i+1)-Y (i-1)	[2] * [3]	[1] * [4]	方向角	夾角	距離
10-119K	-149680.105	54.618	-41505.625	-2.058	-2266954.226250	308041.656090	270-35-09	88-50-45	3.716
10-113K	-149680.067	-10.294	-41509.341	-3.997	427297.156254	598271.227799	181-33-28	90-58-19	10.336
10-96	-149690.399	-20.895	-41509.622	-0.606	867343.551690	90712.381794	181-45-44	180-12-16	10.568
10-111	-149700.962	-22.024	-41509.947	-0.690	914215.072728	103293.663780	181-49-27	180-03-43	11.467
10-99	-149712.423	-33.678	-41510.312	-1.053	1397984.287536	157647.181419	181-46-25	179-56-58	22.228
10-79	-149734.640	-22.262	-41511.000	3.029	924117.882000	-453546.224560	90-41-37	88-55-12	3.717
10-120K	-149734.685	54.535	-41507.283	5.375	-2263599.678405	-804823.931875	1-44-24	91-02-47	54.605
合計				倍面積 面積	404.045553 202.02	-404.045553 202.02			116.637

面積 (座標法) 計算書

地番 = 10-9
測点名

	[1] X (i)	[2] X (i+1)-X (i-1)	[3] Y (i)	[4] Y (i+1)-Y (i-1)	[2] * [3]	[1] * [4]	方向角	夾角	距離
10-80K	-149726.002	-5.347	-41520.735	-10.157	222011.370045	1520767.002314	181-39-27	90-01-06	5.635
10-15	-149731.635	-8.540	-41520.898	2.595	354588.468920	-388553.592825	136-30-24	134-50-57	4.007
10-14	-149734.542	-3.005	-41518.140	9.898	124762.010700	-1482072.496716	90-47-11	134-16-47	7.141
10-79	-149734.640	8.254	-41511.000	7.399	-342631.794000	-1107886.601360	1-46-34	90-59-23	8.356
10-101K	-149726.288	8.638	-41510.741	-9.735	-358569.780758	1457585.413680	271-38-21	89-51-47	9.998
合計				倍面積 面積	160.274907 80.13	-160.274907 80.13			35.137

面積 (座標法) 計算書

地番 = 10-10
測点名

	[1] X (i)	[2] X (i+1)-X (i-1)	[3] Y (i)	[4] Y (i+1)-Y (i-1)	[2] * [3]	[1] * [4]	方向角	夾角	距離
10-105K	-149723.353	-2.363	-41520.658	-10.076	98113.314854	1508612.504828	181-39-54	90-01-36	2.650
10-80K	-149726.002	-2.935	-41520.735	9.917	121863.357225	-1484832.761834	91-38-21	89-58-27	9.998
10-101K	-149726.288	2.363	-41510.741	10.076	-98089.880983	-1508642.077888	1-46-23	90-08-02	2.650
10-112K	-149723.639	2.935	-41510.659	-9.917	-121833.784165	1484809.327963	271-38-18	89-51-55	10.003
合計				倍面積 面積	53.006931 26.50	-53.006931 26.50			25.301

面積 (座標法) 計算書

地番 = 10-11
測点名

	[1] X (i)	[2] X (i+1)-X (i-1)	[3] Y (i)	[4] Y (i+1)-Y (i-1)	[2] * [3]	[1] * [4]	方向角	夾角	距離
10-116K	-149720.992	8.282	-41510.577	10.269	-343790.598714	-1537484.866848	1-46-17	90-07-41	8.573
10-99	-149712.423	8.856	-41510.312	-9.756	-367615.323072	1460594.398788	271-38-26	89-52-09	10.025
10-82	-149712.136	-8.282	-41520.333	-10.269	343871.397906	1537393.924584	181-39-28	90-01-02	8.573
10-81K	-149720.705	-8.856	-41520.581	9.756	367706.265336	-1460675.197980	91-38-36	89-59-08	10.008
合計				倍面積 面積	171.741456 85.87	-171.741456 85.87			37.179

面積 (座標法) 計算書

地番 = 10-12

測点名	[1] X (i)	[2] X (i+1)-X (i-1)	[3] Y (i)	[4] Y (i+1)-Y (i-1)	[2] * [3]	[1] * [4]	方向角	夾角	距離
10-83K	-149703.311	-8.538	-41520.074	-10.302	354498.391812	1542243.509922	181-40-52	90-02-39	8.829
10-82	-149712.136	-9.112	-41520.333	9.762	378333.274296	-1461489.871632	91-38-26	89-57-34	10.025
10-99	-149712.423	8.538	-41510.312	10.302	-354415.043856	-1542337.381746	1-49-26	90-11-00	8.829
10-98K	-149703.598	9.112	-41510.031	-9.762	-378239.402472	1461406.523676	271-38-13	89-48-47	10.047
合計				倍面積 面積	177.219780 88.60	-177.219780 88.60			37.730

面積 (座標法) 計算書

地番 = 10-13

測点名	[1] X (i)	[2] X (i+1)-X (i-1)	[3] Y (i)	[4] Y (i+1)-Y (i-1)	[2] * [3]	[1] * [4]	方向角	夾角	距離
10-98K	-149703.598	2.349	-41510.031	10.127	-97507.062819	-1516048.336946	1-49-31	90-11-18	2.637
10-111	-149700.962	2.923	-41509.947	-9.966	-121333.575081	1491919.787292	271-38-09	89-48-38	10.054
10-106	-149700.675	-2.349	-41519.997	-10.127	97530.472953	1516018.735725	181-40-23	90-02-14	2.637
10-83K	-149703.311	-2.923	-41520.074	9.966	121363.176302	-1491943.197426	91-38-13	89-57-50	10.047
合計				倍面積 面積	53.011355 26.50	-53.011355 26.50			25.375

面積 (座標法) 計算書

地番 = 10-14

測点名	[1] X (i)	[2] X (i+1)-X (i-1)	[3] Y (i)	[4] Y (i+1)-Y (i-1)	[2] * [3]	[1] * [4]	方向角	夾角	距離
10-97K	-149698.328	7.642	-41509.866	10.299	-317218.395972	-1541743.080072	1-45-45	90-07-39	7.933
10-96	-149690.399	8.233	-41509.622	-9.827	-341748.717926	1471007.550973	271-43-44	89-57-59	10.076
10-85	-149690.095	-7.642	-41519.693	-10.299	317293.493906	1541658.288405	181-38-37	89-54-53	7.949
10-84K	-149698.041	-8.233	-41519.921	9.827	341833.509593	-1471082.648907	91-38-06	89-59-29	10.059
合計				倍面積 面積	159.889601 79.94	-159.889601 79.94			36.017

面積 (座標法) 計算書

地番 = 10-15

測点名	[1] X (i)	[2] X (i+1)-X (i-1)	[3] Y (i)	[4] Y (i+1)-Y (i-1)	[2] * [3]	[1] * [4]	方向角	夾角	距離
10-86K	-149682.128	-7.672	-41519.469	-10.288	318537.366168	1539929.732864	181-36-38	89-55-54	7.970
10-85	-149690.095	-8.271	-41519.693	9.847	343409.380803	-1473998.365465	91-43-44	90-07-06	10.076
10-96	-149690.399	7.672	-41509.622	10.288	-318461.819984	-1540014.824912	1-33-30	89-49-46	7.979
10-95K	-149682.423	8.271	-41509.405	-9.847	-343324.288755	1473922.819281	271-40-44	90-07-14	10.068
合計				倍面積 面積	160.638232 80.31	-160.638232 80.31			36.093

面積 (座標法) 計算書

地番 = 10-16

測点名	[1] X (i)	[2] X (i+1)-X (i-1)	[3] Y (i)	[4] Y (i+1)-Y (i-1)	[2]*[3]	[1]*[4]	方向角	夾角	距離
10-95K	-149682.423	2.337	-41509.405	10.135	-97007.479485	-1517031.357105	1-32-43	89-51-59	2.633
10-110	-149679.791	2.926	-41509.334	-9.990	-121456.311284	1495301.112090	271-40-26	90-07-43	10.065
10-107	-149679.497	-2.337	-41519.395	-10.135	97030.826115	1517001.702095	181-36-40	89-56-14	2.632
10-86K	-149682.128	-2.926	-41519.469	9.990	121485.966294	-1495324.458720	91-40-44	90-04-04	10.068
合計				倍面積 面積	53.001640 26.50	-53.001640 26.50			25.398

面積 (座標法) 計算書

地番 = 10-17

測点名	[1] X (i)	[2] X (i+1)-X (i-1)	[3] Y (i)	[4] Y (i+1)-Y (i-1)	[2]*[3]	[1]*[4]	方向角	夾角	距離
10-94K	-149677.158	8.759	-41509.263	10.304	-363579.634617	-1542273.436032	1-33-24	89-52-57	9.056
10-93	-149668.105	9.341	-41509.017	-9.803	-387735.727797	1467196.433315	271-38-30	90-05-06	10.053
10-88	-149667.817	-8.759	-41519.066	-10.304	363665.499094	1542177.186368	181-36-52	89-58-22	9.051
10-87K	-149676.864	-9.341	-41519.321	9.803	387831.977461	-1467282.297792	91-40-27	90-03-35	10.062
合計				倍面積 面積	182.114141 91.05	-182.114141 91.05			38.222

面積 (座標法) 計算書

地番 = 10-18

測点名	[1] X (i)	[2] X (i+1)-X (i-1)	[3] Y (i)	[4] Y (i+1)-Y (i-1)	[2]*[3]	[1]*[4]	方向角	夾角	距離
10-89K	-149658.461	-9.071	-41518.794	-10.306	376616.980374	1542380.099066	181-39-55	90-02-18	9.360
10-88	-149667.817	-9.644	-41519.066	9.777	400409.872504	-1463302.246809	91-38-30	89-58-35	10.053
10-93	-149668.105	9.071	-41509.017	10.306	-376528.293207	-1542479.490130	1-34-23	89-55-53	9.363
10-92K	-149658.746	9.644	-41508.760	-9.777	-400310.481440	1463213.559642	271-37-37	90-03-14	10.038
合計				倍面積 面積	188.078231 94.03	-188.078231 94.03			38.814

面積 (座標法) 計算書

地番 = 10-19

測点名	[1] X (i)	[2] X (i+1)-X (i-1)	[3] Y (i)	[4] Y (i+1)-Y (i-1)	[2]*[3]	[1]*[4]	方向角	夾角	距離
10-92K	-149658.746	2.355	-41508.760	10.107	-97753.129800	-1512600.945822	1-35-02	89-57-25	2.641
10-109	-149656.106	2.925	-41508.687	-9.957	-121412.909475	1490125.847442	271-37-39	90-02-37	10.034
10-108	-149655.821	-2.355	-41518.717	-10.107	97776.578535	1512571.382847	181-40-14	90-02-35	2.641
10-89K	-149658.461	-2.925	-41518.794	9.957	121442.472450	-1490149.296177	91-37-37	89-57-23	10.038
合計				倍面積 面積	53.011710 26.50	-53.011710 26.50			25.354

面積 (座標法) 計算書

地番 = 10-20

測点名	[1] X (i)	[2] X (i+1)-X (i-1)	[3] Y (i)	[4] Y (i+1)-Y (i-1)	[2] * [3]	[1] * [4]	方向角	夾角	距離
10-81K	-149720.705	-2.361	-41520.581	-10.081	98030.091741	1509334.427105	181-39-56	90-01-20	2.649
10-105K	-149723.353	-2.934	-41520.658	9.922	121821.610572	-1485555.108466	91-38-18	89-58-22	10.003
10-112K	-149723.639	2.361	-41510.659	10.081	-98006.665899	-1509364.004759	1-46-28	90-08-10	2.648
10-116K	-149720.992	2.934	-41510.577	-9.922	-121792.032918	1485531.682624	271-38-36	89-52-08	10.008
合計				倍面積 面積	53.003496 26.50	-53.003496 26.50			25.308

面積 (座標法) 計算書

地番 = 10-21

測点名	[1] X (i)	[2] X (i+1)-X (i-1)	[3] Y (i)	[4] Y (i+1)-Y (i-1)	[2] * [3]	[1] * [4]	方向角	夾角	距離
10-84K	-149698.041	-2.347	-41519.921	-10.131	97447.254587	1516590.853371	181-39-10	90-01-04	2.635
10-106	-149700.675	-2.921	-41519.997	9.974	121279.911237	-1493114.532450	91-38-09	89-58-59	10.054
10-111	-149700.962	2.347	-41509.947	10.131	-97423.845609	-1516620.446022	1-45-41	90-07-32	2.635
10-97K	-149698.328	2.921	-41509.866	-9.974	-121250.318586	1493091.123472	271-38-06	89-52-25	10.059
合計				倍面積 面積	53.001629 26.50	-53.001629 26.50			25.383

面積 (座標法) 計算書

地番 = 10-22

測点名	[1] X (i)	[2] X (i+1)-X (i-1)	[3] Y (i)	[4] Y (i+1)-Y (i-1)	[2] * [3]	[1] * [4]	方向角	夾角	距離
10-87K	-149676.864	-2.339	-41519.321	-10.132	97113.691819	1516525.986048	181-36-36	89-56-09	2.634
10-107	-149679.497	-2.927	-41519.395	9.987	121527.269165	-1494849.136539	91-40-26	90-03-50	10.065
10-110	-149679.791	2.339	-41509.334	10.132	-97090.332226	-1516555.642412	1-32-41	89-52-15	2.634
10-94K	-149677.158	2.927	-41509.263	-9.987	-121497.612801	1494825.776946	271-40-27	90-07-46	10.062
合計				倍面積 面積	53.015957 26.50	-53.015957 26.50			25.395

面積 (座標法) 計算書

地番 = 10-23

測点名	[1] X (i)	[2] X (i+1)-X (i-1)	[3] Y (i)	[4] Y (i+1)-Y (i-1)	[2] * [3]	[1] * [4]	方向角	夾角	距離
10-90K	-149653.180	-2.356	-41518.645	-10.097	97817.927620	1511048.158460	181-33-42	89-56-00	2.642
10-108	-149655.821	-2.926	-41518.717	9.958	121483.765942	-1490272.665518	91-37-39	90-03-57	10.034
10-109	-149656.106	2.356	-41508.687	10.097	-97794.466572	-1511077.702282	1-27-12	89-49-33	2.642
10-91K	-149653.465	2.926	-41508.620	-9.958	-121454.222120	1490249.204470	271-37-42	90-10-30	10.029
合計				倍面積 面積	53.004870 26.50	-53.004870 26.50			25.347