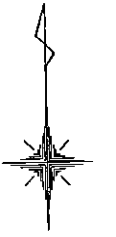
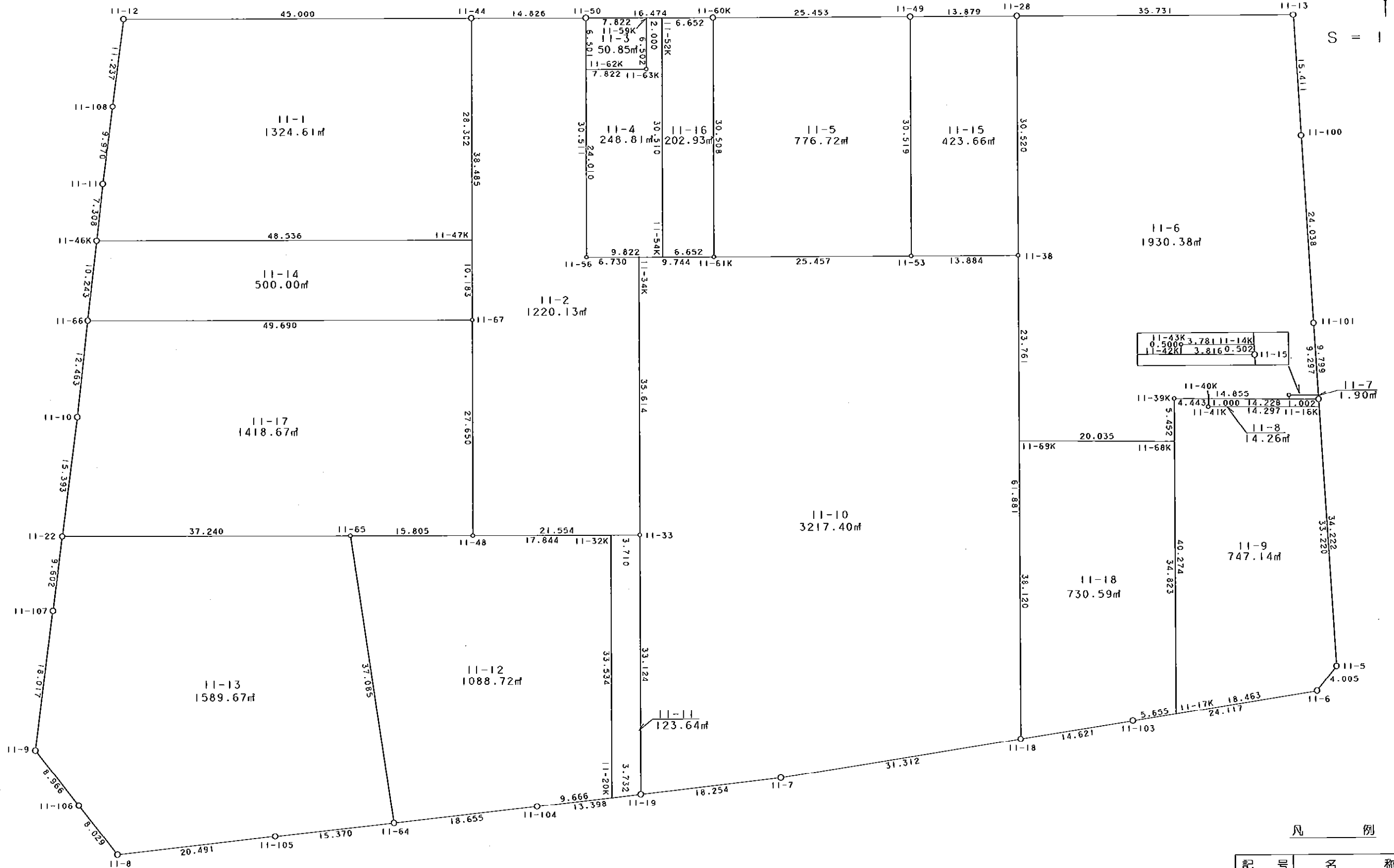


11街区



S = 1 / 500



凡 例

記号	名称
⊙	地区界点
○	街区点
○	画地点 (折れ点)
┆	画地点 (直線中)

地番	筆種別	面積	坪数
11-1	筆界	1324.61	400.69
11-2	筆界	1220.13	369.09
11-3	筆界	50.85	15.38
11-4	筆界	248.81	75.26
11-5	筆界	776.72	234.95
11-6	筆界	1930.38	583.94
11-7	筆界	1.90	0.57
11-8	筆界	14.26	4.31
11-9	筆界	747.14	226.01
11-10	筆界	3217.40	973.26
11-11	筆界	123.64	37.40
11-12	筆界	1088.72	329.33
11-13	筆界	1589.67	480.87
11-14	筆界	500.00	151.25
11-15	筆界	423.66	128.15
11-16	筆界	202.93	61.38
11-17	筆界	1418.67	429.15
11-18	筆界	730.59	221.00
	合計	15610.08	4721.99

面積 (座標法) 計算書

地番 = 11-1
測点名

	[1] X (i)	[2] X (i+1)-X (i-1)	[3] Y (i)	[4] Y (i+1)-Y (i-1)	[2] * [3]	[1] * [4]	方向角	夾角	距離
11-46K	-149771.827	-7.933	-41658.629	47.614	330477.903857	-7131235.770778	90-48-23	83-35-52	48.536
11-47K	-149772.510	27.616	-41610.098	48.928	-1149104.466368	-7328069.369280	0-48-13	89-59-50	28.302
11-44	-149744.211	28.925	-41609.701	-44.599	-1203560.601425	6678442.066389	270-47-49	89-59-36	45.000
11-12	-149743.585	-10.499	-41654.697	-46.581	437332.663803	6975205.932885	188-06-30	97-18-41	11.237
11-108	-149754.710	-20.992	-41656.282	-3.015	874448.671744	451510.450650	188-14-47	180-08-17	9.970
11-11	-149764.577	-17.117	-41657.712	-2.347	713055.056304	351497.462219	187-12-31	178-57-44	7.308
合計				倍面積 面積	2649.227915 1324.61	-2649.227915 1324.61			150.353

面積 (座標法) 計算書

地番 = 11-2
測点名

	[1] X (i)	[2] X (i+1)-X (i-1)	[3] Y (i)	[4] Y (i+1)-Y (i-1)	[2] * [3]	[1] * [4]	方向角	夾角	距離
11-33	-149810.636	35.314	-41589.072	22.048	-1468676.488608	-3303024.902528	0-47-53	90-00-31	35.614
11-34K	-149775.025	35.707	-41588.576	-6.233	-1485003.283232	933547.730825	270-49-02	90-01-09	6.730
11-56	-149774.929	30.604	-41595.305	-6.300	-1272982.714220	943582.052700	0-48-20	269-59-18	30.511
11-50	-149744.421	30.718	-41594.876	-14.396	-1277711.400968	2155720.684716	270-48-42	90-00-22	14.826
11-44	-149744.211	-38.271	-41609.701	-15.365	1592444.866971	2300819.802015	180-48-14	89-59-32	38.485
11-67	-149782.692	-66.128	-41610.241	-0.923	2751602.016848	138249.424716	180-47-37	179-59-23	27.650
11-48	-149810.339	-27.944	-41610.624	21.169	1162767.277056	-3171335.066291	90-47-22	89-59-45	21.554
合計				倍面積 面積	2440.273847 1220.13	-2440.273847 1220.13			175.370

面積 (座標法) 計算書

地番 = 11-3
測点名

	[1] X (i)	[2] X (i+1)-X (i-1)	[3] Y (i)	[4] Y (i+1)-Y (i-1)	[2] * [3]	[1] * [4]	方向角	夾角	距離
11-63K	-149751.035	6.387	-41587.146	7.912	-265617.101502	-1184830.188920	0-48-07	89-58-01	6.502
11-59K	-149744.534	6.614	-41587.055	-7.730	-275056.781770	1157525.247820	270-49-40	90-01-33	7.822
11-50	-149744.421	-6.387	-41594.876	-7.912	265666.473012	1184777.858952	180-48-08	89-58-28	6.501
11-62K	-149750.921	-6.614	-41594.967	7.730	275109.111738	-1157574.619330	90-50-06	90-01-58	7.822
合計				倍面積 面積	101.701478 50.85	-101.701478 50.85			28.647

面積 (座標法) 計算書

地番 = 11-4
測点名

	[1] X (i)	[2] X (i+1)-X (i-1)	[3] Y (i)	[4] Y (i+1)-Y (i-1)	[2] * [3]	[1] * [4]	方向角	夾角	距離
11-59K	-149744.534	-6.472	-41587.055	-2.091	269151.419960	313115.820594	180-48-07	89-58-16	6.502
11-63K	-149751.035	-6.387	-41587.146	-7.912	265617.101502	1184830.188920	270-50-06	270-01-59	7.822
11-62K	-149750.921	-23.894	-41594.967	-8.159	993870.141498	1221817.764439	180-48-24	89-58-18	24.010
11-56	-149774.929	-24.149	-41595.305	9.483	1004485.020445	-1420315.651707	90-49-21	90-00-57	9.822
11-54K	-149775.070	30.366	-41585.484	10.250	-1262784.807144	-1535194.467500	0-48-20	89-58-59	30.510
11-52K	-149744.563	30.536	-41585.055	-1.571	-1269841.239480	235248.708473	270-49-51	90-01-31	2.000
合計				倍面積 面積	497.636781 248.81	-497.636781 248.81			80.666

面積 (座標法) 計算書

地番 = 11-5
測点名

	[1] X (i)	[2] X (i+1)-X (i-1)	[3] Y (i)	[4] Y (i+1)-Y (i-1)	[2] * [3]	[1] * [4]	方向角	夾角	距離
11-61K	-149775.165	-30.871	-41578.833	25.025	1283580.153543	-3748123.504125	90-49-26	90-01-05	25.457
11-53	-149775.531	30.150	-41553.379	25.880	-1252834.376850	-3876190.742280	0-47-59	89-58-33	30.519
11-49	-149745.015	30.871	-41552.953	-25.025	-1282781.212063	3747369.000375	270-47-57	89-59-58	25.453
11-60K	-149744.660	-30.150	-41578.404	-25.880	1253588.880600	3875391.800800	180-48-21	90-00-24	30.508
合計				倍面積 面積	1553.445230 776.72	-1553.445230 776.72			111.937

面積 (座標法) 計算書

地番 = 11-6
測点名

	[1] X (i)	[2] X (i+1)-X (i-1)	[3] Y (i)	[4] Y (i+1)-Y (i-1)	[2] * [3]	[1] * [4]	方向角	夾角	距離
11-68K	-149799.941	4.995	-41519.804	20.107	-207391.420980	-3012027.413687	0-48-33	89-30-18	5.452
11-39K	-149794.490	5.113	-41519.727	14.928	-212290.364151	-2236132.146720	91-18-14	270-29-41	14.855
11-42K	-149794.828	0.162	-41504.876	14.863	-6723.789912	-2226400.528564	1-22-29	90-04-15	0.500
11-43K	-149794.328	0.414	-41504.864	3.792	-17183.013696	-568020.091776	91-18-12	269-55-43	3.781
11-14K	-149794.414	9.201	-41501.084	3.344	-381851.473884	-500912.520416	357-18-44	86-00-32	9.297
11-101	-149785.127	33.299	-41501.520	-1.543	-1381959.114480	231118.450961	357-21-38	180-02-54	24.038
11-100	-149761.115	39.406	-41502.627	-1.828	-1635452.519562	273763.318220	357-19-06	179-57-28	15.411
11-13	-149745.721	15.906	-41503.348	-36.448	-660152.253288	5457932.039008	270-49-16	93-30-10	35.731
11-28	-149745.209	-30.005	-41539.075	-36.148	1246379.945375	5412989.814932	180-47-25	89-58-09	30.520
11-38	-149775.726	-54.276	-41539.496	-0.759	2254597.684896	113679.776034	180-48-54	180-01-29	23.761
11-69K	-149799.485	-24.215	-41539.834	19.692	1005887.080310	-2949851.458620	91-18-15	90-29-21	20.035
合計				倍面積 面積	3860.760628 1930.38	-3860.760628 1930.38			183.381

面積 (座標法) 計算書

地番 = 11-7
測点名

	[1] X (i)	[2] X (i+1)-X (i-1)	[3] Y (i)	[4] Y (i+1)-Y (i-1)	[2] * [3]	[1] * [4]	方向角	夾角	距離
11-42K	-149794.828	-0.587	-41504.876	3.803	24363.362212	-569669.730884	91-18-23	89-55-54	3.816
11-15	-149794.915	0.414	-41501.061	3.792	-17181.439254	-568022.317680	357-22-17	86-03-54	0.502
11-14K	-149794.414	0.587	-41501.084	-3.803	-24361.136308	569668.156442	271-18-12	93-55-55	3.781
11-43K	-149794.328	-0.414	-41504.864	-3.792	17183.013696	568020.091776	181-22-29	90-04-17	0.500
合計				倍面積 面積	3.800346 1.90	-3.800346 1.90			8.599

面積 (座標法) 計算書

地番 = 11-8
測点名

	[1] X (i)	[2] X (i+1)-X (i-1)	[3] Y (i)	[4] Y (i+1)-Y (i-1)	[2] * [3]	[1] * [4]	方向角	夾角	距離
11-41K	-149795.591	-1.325	-41515.308	14.270	55007.783100	-2137583.083570	91-18-09	89-59-06	14.297
11-16K	-149795.916	0.676	-41501.015	14.247	-28054.686140	-2134142.415252	357-22-08	86-03-59	1.002
11-15	-149794.915	1.325	-41501.061	-14.270	-54988.905825	2137573.437050	271-18-18	93-56-10	14.228
11-40K	-149794.591	-0.676	-41515.285	-14.247	28064.332660	2134123.537977	181-19-03	90-00-45	1.000
合計				倍面積 面積	28.523795 14.26	-28.523795 14.26			30.527

面積 (座標法) 計算書

地番 = 11-9
測点名

	[1] X (i)	[2] X (i+1)-X (i-1)	[3] Y (i)	[4] Y (i+1)-Y (i-1)	[2] * [3]	[1] * [4]	方向角	夾角	距離
11-39K	-149794.490	-40.169	-41519.727	-5.014	1667805.913863	751069.572860	180-48-50	89-30-41	40.274
11-17K	-149834.760	-37.708	-41520.299	17.712	1565647.434692	-2653873.269120	82-01-25	81-12-35	18.463
11-6	-149832.198	5.660	-41502.015	20.822	-234901.404900	-3119806.026756	39-19-32	137-18-07	4.005
11-5	-149829.100	36.282	-41499.477	1.000	-1505684.024514	-149829.100000	357-20-47	138-01-15	33.220
11-16K	-149795.916	33.509	-41501.015	-15.831	-1390657.511635	2371419.146196	271-18-09	93-57-22	14.297
11-41K	-149795.591	1.325	-41515.308	-14.270	-55007.783100	2137583.083570	1-19-03	270-00-54	1.000
11-40K	-149794.591	1.101	-41515.285	-4.419	-45708.328785	661942.297629	271-18-09	89-59-06	4.443
合計				倍面積 面積	1494.295621 747.14	-1494.295621 747.14			115.702

面積 (座標法) 計算書

地番 = 11-10
測点名

	[1] X (i)	[2] X (i+1)-X (i-1)	[3] Y (i)	[4] Y (i+1)-Y (i-1)	[2]*[3]	[1]*[4]	方向角	夾角	距離
11-33	-149810.636	-68.732	-41589.072	-0.971	2858500.096704	145466.127556	180-49-18	180-01-25	33.124
11-19	-149843.757	-31.341	-41589.547	17.692	1303457.992527	-2651035.748844	84-24-15	83-34-57	18.254
11-7	-149841.977	6.156	-41571.380	49.172	-255913.415280	-7368029.693044	81-57-59	177-33-44	31.312
11-18	-149837.601	66.251	-41540.375	31.884	-2752091.384125	-4777422.070284	0-48-50	98-50-51	61.881
11-38	-149775.726	62.070	-41539.496	-13.004	-2578356.516720	1947683.540904	270-48-17	89-59-27	13.884
11-53	-149775.531	0.561	-41553.379	-39.337	-23311.445619	5891720.062947	270-49-26	180-01-09	25.457
11-61K	-149775.165	0.506	-41578.833	-35.197	-21038.889498	5271636.482505	270-49-24	179-59-58	9.744
11-34K	-149775.025	-35.471	-41588.576	-10.239	1475188.379296	1533546.480975	180-47-53	89-58-29	35.614
合計				倍面積 面積	6434.817285 3217.40	-6434.817285 3217.40			229.270

面積 (座標法) 計算書

地番 = 11-11
測点名

	[1] X (i)	[2] X (i+1)-X (i-1)	[3] Y (i)	[4] Y (i+1)-Y (i-1)	[2]*[3]	[1]*[4]	方向角	夾角	距離
11-20K	-149844.116	-33.172	-41593.262	3.235	1379731.687064	-484745.715260	84-28-49	83-39-36	3.732
11-19	-149843.757	33.480	-41589.547	4.190	-1392418.033560	-627845.341830	0-49-18	96-20-29	33.124
11-33	-149810.636	33.172	-41589.072	-3.235	-1379592.696384	484637.407460	270-47-15	89-57-57	3.710
11-32K	-149810.585	-33.480	-41592.782	-4.190	1392526.341360	627706.351150	180-49-13	90-01-58	33.534
合計				倍面積 面積	247.298480 123.64	-247.298480 123.64			74.100

面積 (座標法) 計算書

地番 = 11-12
測点名

	[1] X (i)	[2] X (i+1)-X (i-1)	[3] Y (i)	[4] Y (i+1)-Y (i-1)	[2]*[3]	[1]*[4]	方向角	夾角	距離
11-32K	-149810.585	33.777	-41592.782	-17.362	-1404879.397614	2601011.376770	270-47-24	89-58-11	17.844
11-48	-149810.339	0.475	-41610.624	-33.645	-19765.046400	5040368.855655	270-49-49	180-02-25	15.805
11-65	-149810.110	-36.520	-41626.427	-10.825	1520197.114040	1621694.440750	172-17-09	81-27-20	37.085
11-64	-149846.859	-34.934	-41621.449	23.544	1454003.699366	-3527994.448296	84-25-00	92-07-51	18.655
11-104	-149845.044	2.743	-41602.883	28.187	-114116.708069	-4223682.255228	84-29-26	180-04-26	9.666
11-20K	-149844.116	34.459	-41593.262	10.101	-1433262.215258	-1513575.415716	0-49-13	96-19-47	33.534
合計				倍面積 面積	2177.446065 1088.72	-2177.446065 1088.72			132.589

面積 (座標法) 計算書

地番 = 11-13
測点名

	[1] X (i)	[2] X (i+1)-X (i-1)	[3] Y (i)	[4] Y (i+1)-Y (i-1)	[2]*[3]	[1]*[4]	方向角	夾角	距離
11-22	-149809.592	-8.988	-41663.663	-38.589	374473.003044	5781002.345688	188-06-02	97-18-13	9.602
11-107	-149819.098	-27.340	-41665.016	-3.912	1139121.537440	586092.311376	188-09-56	180-03-54	18.017
11-9	-149836.932	-24.898	-41667.575	2.963	1037439.282350	-443966.829516	141-59-06	133-49-10	8.966
11-106	-149843.996	-13.414	-41662.053	10.435	558854.778942	-1563622.098260	142-16-15	180-17-09	8.029
11-8	-149850.346	-4.331	-41657.140	25.304	180417.073340	-3791813.155184	84-20-43	122-04-28	20.491
11-105	-149848.327	3.487	-41636.749	35.691	-145187.343763	-5348236.638957	84-31-10	180-10-27	15.370
11-64	-149846.859	38.217	-41621.449	10.322	-1590646.916433	-1546719.278598	352-17-09	87-45-59	37.085
11-65	-149810.110	37.267	-41626.427	-42.214	-1551292.055009	6324083.983540	270-47-49	98-30-40	37.240
合計				倍面積 面積	3179.359911 1589.67	-3179.359911 1589.67			154.800

面積 (座標法) 計算書

地番 = 11-14
測点名

	[1] X (i)	[2] X (i+1)-X (i-1)	[3] Y (i)	[4] Y (i+1)-Y (i-1)	[2]*[3]	[1]*[4]	方向角	夾角	距離
11-46K	-149771.827	-9.478	-41658.629	-49.828	394840.485662	7462830.595756	187-16-27	96-28-04	10.243
11-66	-149781.988	-10.865	-41659.926	48.388	452635.095990	-7247650.835344	90-48-42	83-32-15	49.690
11-67	-149782.692	9.478	-41610.241	49.828	-394381.864198	-7463371.976976	0-48-17	89-59-35	10.183
11-47K	-149772.510	10.865	-41610.098	-48.388	-452093.714770	7247192.213880	270-48-23	90-00-06	48.536
合計				倍面積 面積	1000.002684 500.00	-1000.002684 500.00			118.652

面積 (座標法) 計算書

地番 = 11-15
測点名

	[1] X (i)	[2] X (i+1)-X (i-1)	[3] Y (i)	[4] Y (i+1)-Y (i-1)	[2]*[3]	[1]*[4]	方向角	夾角	距離
11-49	-149745.015	-30.322	-41552.953	-14.304	1259968.640866	2141952.694560	180-47-59	89-59-56	30.519
11-53	-149775.531	-30.711	-41553.379	13.457	1276145.822469	-2015529.320667	90-48-17	90-00-18	13.884
11-38	-149775.726	30.322	-41539.496	14.304	-1259560.597712	-2142391.984704	0-47-25	89-59-08	30.520
11-28	-149745.209	30.711	-41539.075	-13.457	-1275706.532325	2015121.277513	270-48-03	90-00-38	13.879
合計				倍面積 面積	847.333298 423.66	-847.333298 423.66			88.802

面積 (座標法) 計算書

地番 = 11-16
測点名

	[1] X (i)	[2] X (i+1)-X (i-1)	[3] Y (i)	[4] Y (i+1)-Y (i-1)	[2]*[3]	[1]*[4]	方向角	夾角	距離
11-60K	-149744.660	30.602	-41578.404	-6.222	-1272382.319208	931711.274520	270-50-08	90-01-47	6.652
11-52K	-149744.563	-30.410	-41585.055	-7.080	1264601.522550	1060191.506040	180-48-20	89-58-12	30.510
11-54K	-149775.070	-30.602	-41585.484	6.222	1272598.981368	-931900.485540	90-49-06	90-00-46	6.652
11-61K	-149775.165	30.410	-41578.833	7.080	-1264412.311530	-1060408.168200	0-48-21	89-59-15	30.508
合計				倍面積 面積	405.873180 202.93	-405.873180 202.93			74.322

面積 (座標法) 計算書

地番 = 11-17

測点名	[1] X (i)	[2] X (i+1)-X (i-1)	[3] Y (i)	[4] Y (i+1)-Y (i-1)	[2]*[3]	[1]*[4]	方向角	夾角	距離
11-66	-149781.988	-11.661	-41659.926	-51.247	485796.397086	7675877.539036	187-11-59	96-23-17	12.463
11-10	-149794.353	-27.604	-41661.488	-3.737	1150023.714752	559781.497161	188-07-22	180-55-23	15.393
11-22	-149809.592	-15.757	-41663.663	35.061	656494.337891	-5252474.105112	90-47-49	82-40-27	37.240
11-65	-149810.110	-0.747	-41626.427	53.039	31094.940969	-7945778.424290	90-49-49	180-02-00	15.805
11-48	-149810.339	27.418	-41610.624	16.186	-1140880.088832	-2424830.147054	0-47-37	89-57-48	27.650
11-67	-149782.692	28.351	-41610.241	-49.302	-1179691.942591	7384586.280984	270-48-42	90-01-05	49.690
合計				倍面積 面積	2837.359275 1418.67	-2837.359275 1418.67			158.241

面積 (座標法) 計算書

地番 = 11-18

測点名	[1] X (i)	[2] X (i+1)-X (i-1)	[3] Y (i)	[4] Y (i+1)-Y (i-1)	[2]*[3]	[1]*[4]	方向角	夾角	距離
11-69K	-149799.485	-37.660	-41539.834	-20.571	1564390.148440	3081525.205935	180-48-47	89-30-32	38.120
11-18	-149837.601	-36.060	-41540.375	13.935	1497945.922500	-2087986.969935	81-54-59	81-06-12	14.621
11-103	-149835.545	2.841	-41525.899	20.076	-117975.079059	-3008098.401420	82-01-13	180-06-14	5.655
11-17K	-149834.760	35.604	-41520.299	6.095	-1478288.725596	-913242.862200	0-48-52	98-47-39	34.823
11-68K	-149799.941	35.275	-41519.804	-19.535	-1464611.086100	2926341.847435	271-18-15	90-29-23	20.035
合計				倍面積 面積	1461.180185 730.59	-1461.180185 730.59			113.254