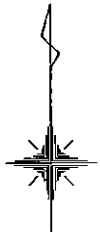
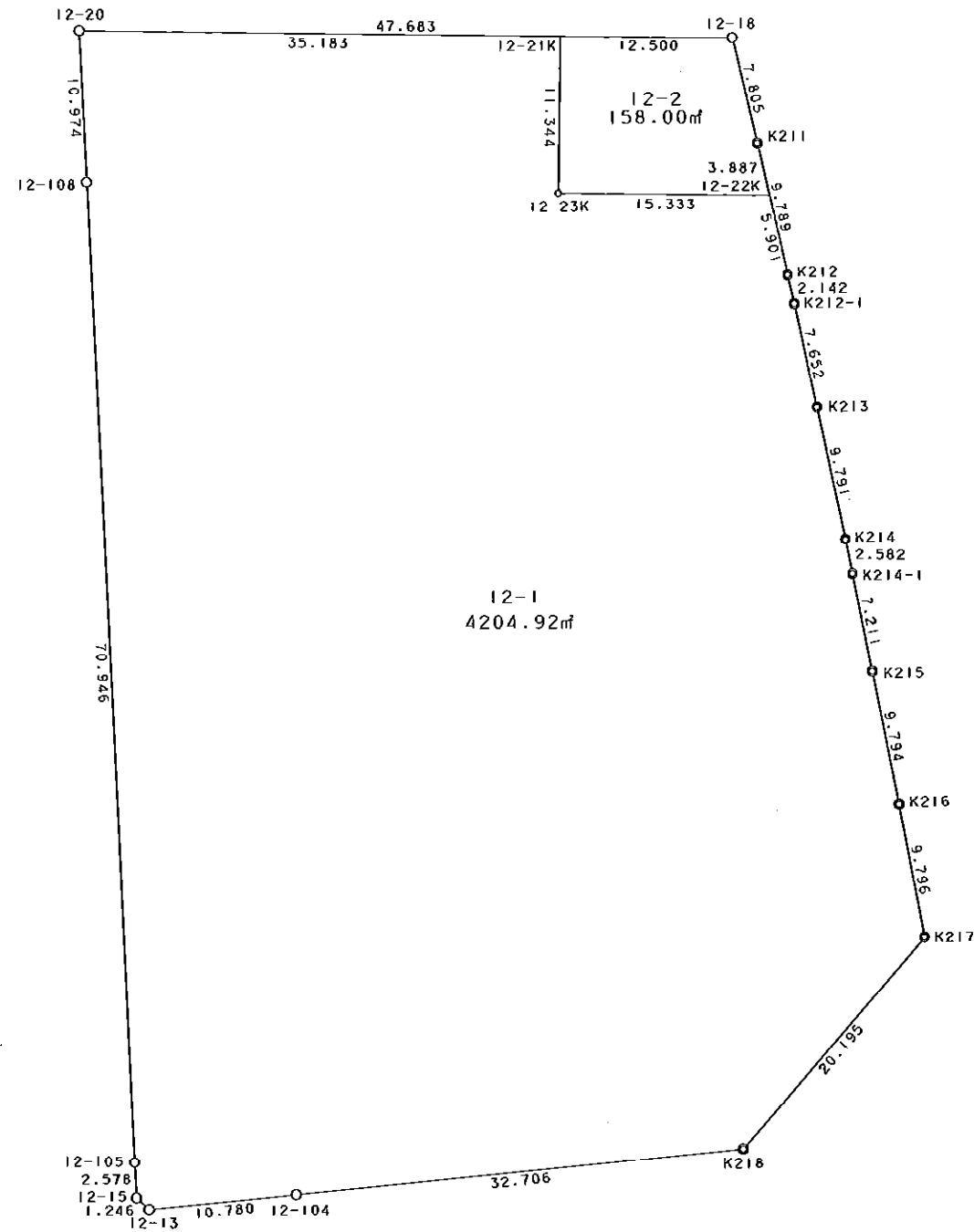


西部第5地区土地区画整理事業 出来形確認測量（原子図）

12街区



S = 1 / 500



凡 例

記号	名称
⊙	地区界点
○	街区点
○	画地点(折れ点)
┌	画地点(直線中)

地番
12-1
12-2

筆種別
筆界
筆界
合計

面積
4204.92
158.00
4362.92

坪数
1271.98
47.79
1319.77

面積 (座標法) 計算書

地番 = 12-1
測点名

	[1] X (i)	[2] X (i+1)-X (i-1)	[3] Y (i)	[4] Y (i+1)-Y (i-1)	[2] * [3]	[1] * [4]	方向角	夾角	距離
12-20	-149745.830	-10.446	-41495.333	-34.652	433460.248518	5188992.501160	177-14-51	86-24-32	10.974
12-108	-149756.791	-81.832	-41494.806	3.794	3395602.964592	-568177.265054	177-21-38	180-06-47	70.946
12-105	-149827.662	-73.446	-41491.539	3.393	3047387.573394	-508365.257166	177-11-55	179-50-17	2.578
12-15	-149830.237	-3.410	-41491.413	1.051	141485.718330	-157471.579087	132-04-22	134-52-27	1.246
12-13	-149831.072	0.232	-41490.488	11.652	-9625.793216	-1745831.650944	84-19-10	132-14-48	10.780
12-104	-149830.005	4.240	-41479.761	43.279	-175874.186640	-6484492.786395	84-25-58	180-06-48	32.706
K218	-149826.832	18.359	-41447.209	45.865	-760929.310031	-6871807.649680	41-14-23	136-48-25	20.195
K217	-149811.646	24.814	-41433.896	11.504	-1028140.695344	-1723433.175584	349-21-32	128-07-09	9.796
K216	-149802.018	19.235	-41435.705	-3.715	-797015.785675	556514.496870	348-46-42	179-25-10	9.794
K215	-149792.411	16.680	-41437.611	-3.312	-691179.351480	496112.465232	348-45-25	179-58-43	7.211
K214-1	-149785.338	9.604	-41439.017	-1.919	-397980.319268	287438.063622	348-32-32	179-47-07	2.582
K214	-149782.807	12.108	-41439.530	-2.550	-501749.829240	381946.157850	347-59-32	179-27-00	9.791
K213	-149773.230	17.051	-41441.567	-3.679	-706620.158917	551015.713170	347-36-33	179-37-01	7.652
K212-1	-149765.756	9.564	-41443.209	-2.111	-396362.850876	316155.510916	347-21-08	179-44-35	2.142
K212	-149763.666	7.844	-41443.678	-1.780	-325084.210232	266579.325480	347-09-53	179-48-45	5.901
12-22K	-149757.912	5.978	-41444.989	-16.642	-247758.144242	2492271.171504	270-50-14	103-40-21	15.333
12-23K	-149757.688	11.567	-41460.320	-15.165	-479571.521440	2271075.338520	0-50-18	270-00-04	11.344
12-21K	-149746.345	11.858	-41460.154	-35.013	-491634.506132	5243068.777485	270-50-19	90-00-01	35.183
合計				倍面積 面積	8409.842101 4204.92	-8409.842101 4204.92			266.154

面積 (座標法) 計算書

地番 = 12-2
測点名

	[1] X (i)	[2] X (i+1)-X (i-1)	[3] Y (i)	[4] Y (i+1)-Y (i-1)	[2] * [3]	[1] * [4]	方向角	夾角	距離
12-22K	-149757.912	3.566	-41444.989	14.467	-147792.830774	-2166547.712904	347-09-28	76-19-14	3.887
K211	-149754.122	11.384	-41445.853	-2.666	-471819.590552	399244.489252	346-39-04	179-29-36	7.805
12-18	-149746.528	7.777	-41447.655	-14.301	-322338.412935	2141525.096928	270-50-20	104-11-16	12.500
12-21K	-149746.345	-11.160	-41460.154	-12.665	462695.318640	1896537.459425	180-50-18	89-59-58	11.344
12-23K	-149757.688	-11.567	-41460.320	15.165	479571.521440	-2271075.338520	90-50-14	89-59-56	15.333
合計				倍面積 面積	316.005819 158.00	-316.005819 158.00			50.869