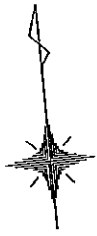
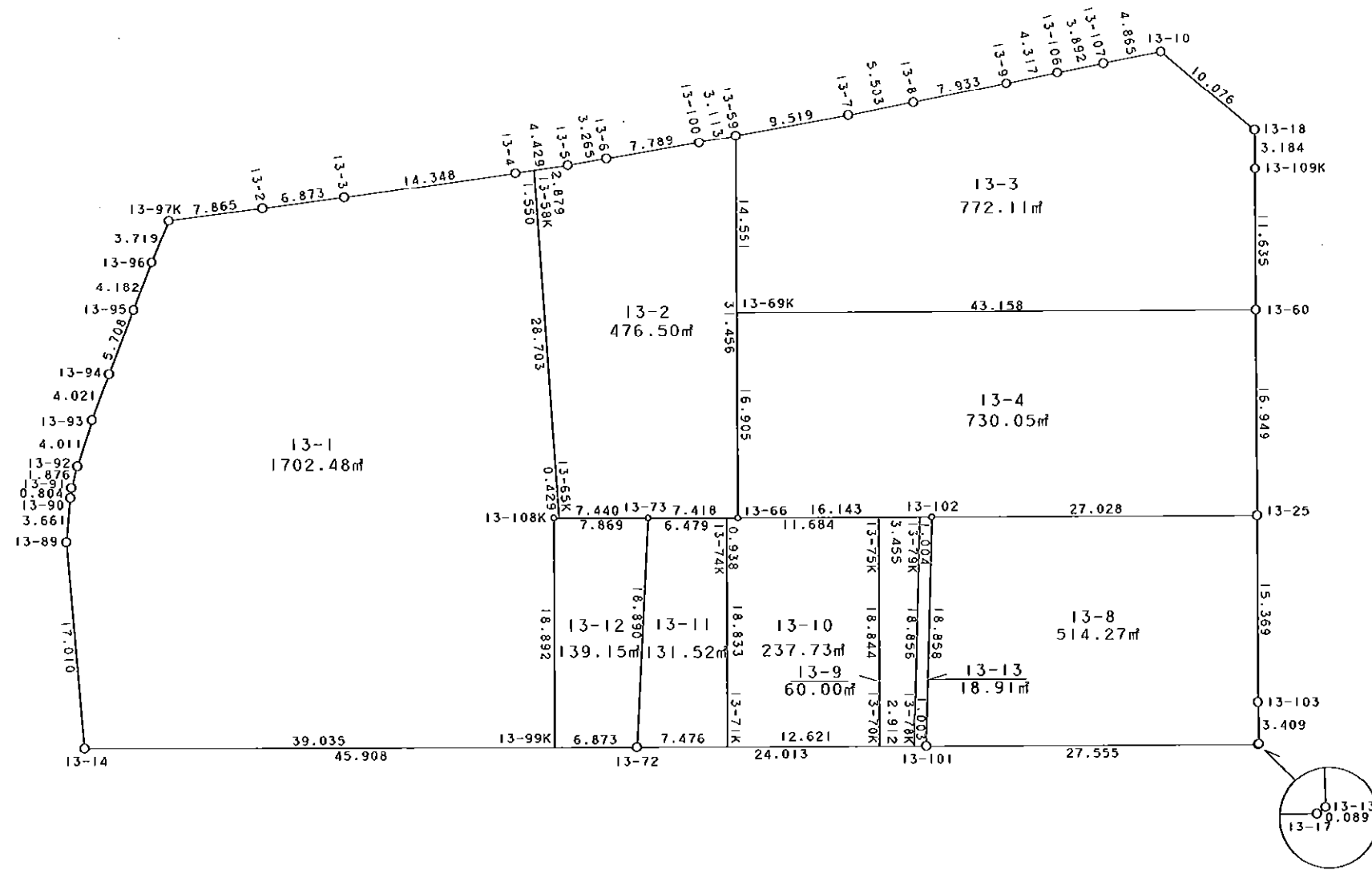


13街区



S = 1 / 500



凡 例

記号	名称
⊙	地区界点
○	街区点
○	画地点 (折れ点)
┌	画地点 (直線中)

地番	筆種別	面積	坪数
13-1	筆界	1702.48	515.00
13-2	筆界	476.50	144.14
13-3	筆界	772.11	233.56
13-4	筆界	730.05	220.84
13-8	筆界	514.27	155.56
13-9	筆界	60.00	18.15
13-10	筆界	237.73	71.91
13-11	筆界	131.52	39.78
13-12	筆界	139.15	42.09
13-13	筆界	18.91	5.72
	合計	4782.72	1446.75

面積 (座標法) 計算書

地番 = 13-1
測点名

	[1] X (i)	[2] X (i+1)-X (i-1)	[3] Y (i)	[4] Y (i+1)-Y (i-1)	[2] * [3]	[1] * [4]	方向角	夾角	距離
13-97K	-149887.591	-3.545	-41784.179	-9.591	148124.914555	1437571.885281	207-43-22	119-33-58	3.719
13-96	-149890.883	-7.029	-41785.909	-3.607	293713.154361	540656.414981	206-40-09	178-56-47	4.182
13-95	-149894.620	-8.847	-41787.786	-4.421	369696.542742	662684.115020	206-27-59	179-47-50	5.708
13-94	-149899.730	-8.720	-41790.330	-4.316	364411.677600	646967.234680	206-08-40	179-40-41	4.021
13-93	-149903.340	-7.290	-41792.102	-3.368	304664.423580	504874.449120	203-26-46	177-18-06	4.011
13-92	-149907.020	-5.438	-41793.698	-2.251	227274.129724	337440.702020	200-26-04	176-59-18	1.876
13-91	-149908.778	-2.543	-41794.353	-0.831	106283.039679	124574.194518	192-38-13	172-12-09	0.804
13-90	-149909.563	-4.385	-41794.529	-0.842	183269.009665	126223.852046	190-28-52	177-50-39	3.661
13-89	-149913.163	-20.610	-41795.195	-0.767	861398.968950	114983.396021	180-20-25	169-51-33	17.010
13-14	-149930.173	-20.652	-41795.296	38.764	863156.452992	-5811893.226172	95-21-13	95-00-48	39.035
13-99K	-149933.815	15.168	-41756.431	40.621	-633361.545408	-6090461.499115	5-20-00	89-58-47	18.892
13-108K	-149915.005	18.768	-41754.675	2.183	-783651.740400	-327264.455915	95-37-03	270-17-03	0.429
13-65K	-149915.047	28.653	-41754.248	1.107	-1196384.467944	-165955.957029	1-21-27	85-44-24	28.703
13-58K	-149886.352	28.614	-41753.568	-0.868	-1194736.594752	130101.353536	267-00-17	85-38-50	1.550
13-4	-149886.433	-0.717	-41755.116	-15.882	29938.418172	2380496.328906	267-27-34	180-27-17	14.348
13-3	-149887.069	-0.905	-41769.450	-21.202	37801.352250	3177905.636938	267-45-25	180-17-51	6.873
13-2	-149887.338	-0.522	-41776.318	-14.729	21807.237996	2207690.601402	268-09-24	180-23-59	7.865
合計				倍面積 面積	3404.973762 1702.48	-3404.973762 1702.48			162.687

面積 (座標法) 計算書

地番 = 13-2
測点名

	[1] X (i)	[2] X (i+1)-X (i-1)	[3] Y (i)	[4] Y (i+1)-Y (i-1)	[2] * [3]	[1] * [4]	方向角	夾角	距離
13-65K	-149915.047	-29.415	-41754.248	6.725	1228201.204920	-1008178.691075	95-33-13	94-11-46	7.440
13-73	-149915.767	-1.438	-41746.843	14.788	60031.960234	-2216954.362396	95-33-16	180-00-03	7.418
13-66	-149916.485	30.604	-41739.460	10.279	-1277394.433840	-1540991.549315	5-16-57	89-43-41	31.456
13-59	-149885.163	31.056	-41736.564	-0.206	-1296170.731584	30876.343578	265-05-56	79-48-59	3.113
13-100	-149885.429	-0.816	-41739.666	-10.872	34059.567456	1629554.384088	265-57-04	180-51-08	7.789
13-6	-149885.979	-0.773	-41747.436	-11.027	32270.768028	1652792.690433	266-04-59	180-07-55	3.265
13-5	-149886.202	-0.373	-41750.693	-6.132	15573.008489	919102.190664	267-00-48	180-55-49	2.879
13-58K	-149886.352	-28.845	-41753.568	-3.555	1204381.668960	532845.981360	181-21-27	94-20-39	28.703
合計				倍面積 面積	953.012663 476.50	-953.012663 476.50			92.063

面積 (座標法) 計算書

地番 = 13-3
測点名

	[1] X (i)	[2] X (i+1)-X (i-1)	[3] Y (i)	[4] Y (i+1)-Y (i-1)	[2]*[3]	[1]*[4]	方向角	夾角	距離
13-60	-149903.609	7.628	-41694.928	44.058	-318048.910784	-6604453.205322	5-20-09	90-04-31	11.635
13-109K	-149892.024	14.757	-41693.846	1.353	-615276.085422	-202803.908472	4-53-00	179-32-51	3.184
13-18	-149888.852	10.297	-41693.575	-6.854	-429318.741775	1027338.191608	315-00-00	130-07-00	10.076
13-10	-149881.727	6.666	-41700.700	-11.968	-277976.866200	1793784.508736	264-35-09	129-35-09	4.865
13-107	-149882.186	-0.850	-41705.543	-8.715	35449.711550	1306223.250990	264-14-01	179-38-52	3.892
13-106	-149882.577	-0.831	-41709.415	-8.167	34660.523865	1224091.006359	264-09-03	179-55-02	4.317
13-9	-149883.017	-1.251	-41713.710	-12.186	52183.851210	1826474.445162	264-07-55	179-58-52	7.933
13-8	-149883.828	-1.338	-41721.601	-13.369	55823.502138	2003796.896532	264-30-18	180-22-23	5.503
13-7	-149884.355	-1.335	-41727.079	-14.963	55705.650465	2242719.603865	265-07-51	180-37-33	9.519
13-59	-149885.163	-15.297	-41736.564	-10.825	638444.219508	1622506.889475	185-17-02	100-09-11	14.551
13-69K	-149899.652	-18.446	-41737.904	41.636	769897.377184	-6241221.910672	95-15-38	89-58-36	43.158
合計				倍面積 面積	1544.231739 772.11	-1544.231739 772.11			118.633

面積 (座標法) 計算書

地番 = 13-4
測点名

	[1] X (i)	[2] X (i+1)-X (i-1)	[3] Y (i)	[4] Y (i+1)-Y (i-1)	[2]*[3]	[1]*[4]	方向角	夾角	距離
13-60	-149903.609	20.835	-41694.928	-41.429	-868713.824880	6210356.617261	275-15-38	90-01-25	43.158
13-69K	-149899.652	-12.876	-41737.904	-44.532	537417.251904	6675331.302864	185-16-53	90-01-15	16.905
13-66	-149916.485	-18.303	-41739.460	14.520	763957.336380	-2176787.362200	95-13-29	89-56-36	16.143
13-102	-149917.955	-4.002	-41723.384	42.985	166976.982768	-6444223.295675	95-22-31	180-09-02	27.028
13-25	-149920.487	14.346	-41696.475	28.456	-598177.630350	-4266137.378072	5-14-13	89-51-42	16.949
合計				倍面積 面積	1460.115822 730.05	-1460.115822 730.05			120.183

面積 (座標法) 計算書

地番 = 13-8
測点名

	[1] X (i)	[2] X (i+1)-X (i-1)	[3] Y (i)	[4] Y (i+1)-Y (i-1)	[2]*[3]	[1]*[4]	方向角	夾角	距離
13-102	-149917.955	-16.186	-41723.384	-29.203	675334.693424	4378054.039865	186-59-14	91-36-43	18.858
13-101	-149936.673	-21.280	-41725.678	25.142	887922.427840	-3769707.832566	95-20-06	88-20-52	27.555
13-17	-149939.235	-2.515	-41698.242	27.511	104871.078630	-4124978.294085	57-55-34	142-35-28	0.089
13-13	-149939.188	3.447	-41698.167	0.320	-143733.581649	-47980.540160	4-07-18	126-11-44	3.409
13-103	-149935.788	18.701	-41697.922	1.692	-779792.839322	-253691.353296	5-24-08	181-16-50	15.369
13-25	-149920.487	17.833	-41696.475	-25.462	-743573.238675	3817275.439994	275-22-31	89-58-23	27.028
合計				倍面積 面積	1028.540248 514.27	-1028.540248 514.27			92.308

面積 (座標法) 計算書

地番 = 13-9
測点名

	[1] X (i)	[2] X (i+1)-X (i-1)	[3] Y (i)	[4] Y (i+1)-Y (i-1)	[2] * [3]	[1] * [4]	方向角	夾角	距離
13-70K	-149936.311	-19.031	-41729.577	1.148	794155.579887	-172126.885028	95-17-58	89-57-53	2.912
13-78K	-149936.580	18.447	-41726.677	5.193	-769732.010619	-778620.659940	6-59-05	91-41-07	18.856
13-79K	-149917.864	19.031	-41724.384	-1.148	-794056.751904	172105.707872	275-13-50	88-14-45	3.455
13-75K	-149917.549	-18.447	-41727.825	-5.193	769753.187775	778521.831957	185-20-05	90-06-15	18.844
合計				倍面積 面積	120.005139 60.00	-120.005139 60.00			44.067

面積 (座標法) 計算書

地番 = 13-10
測点名

	[1] X (i)	[2] X (i+1)-X (i-1)	[3] Y (i)	[4] Y (i+1)-Y (i-1)	[2] * [3]	[1] * [4]	方向角	夾角	距離
13-71K	-149935.146	-19.917	-41742.144	10.817	831378.282048	-1621848.474282	95-17-47	89-57-53	12.621
13-70K	-149936.311	17.597	-41729.577	14.319	-734315.366469	-2146938.037209	5-20-05	90-02-18	18.844
13-75K	-149917.549	19.826	-41727.825	-9.883	-827295.858450	1481635.136767	275-13-30	89-53-25	11.684
13-66	-149916.485	1.155	-41739.460	-12.569	-48209.076300	1884300.299965	275-33-53	180-20-23	0.938
13-74K	-149916.394	-18.661	-41740.394	-2.684	778917.492434	402375.601496	185-19-54	89-46-01	18.833
合計				倍面積 面積	475.473263 237.73	-475.473263 237.73			62.920

面積 (座標法) 計算書

地番 = 13-11
測点名

	[1] X (i)	[2] X (i+1)-X (i-1)	[3] Y (i)	[4] Y (i+1)-Y (i-1)	[2] * [3]	[1] * [4]	方向角	夾角	距離
13-74K	-149916.394	19.379	-41740.394	-4.699	-808887.095326	704457.135406	275-33-11	90-13-17	6.479
13-73	-149915.767	-18.062	-41746.843	-9.194	754031.478266	1378325.561798	188-21-21	92-48-10	18.890
13-72	-149934.456	-19.379	-41749.588	4.699	809065.265852	-704542.008744	95-17-45	86-56-24	7.476
13-71K	-149935.146	18.062	-41742.144	9.194	-753946.604928	-1378503.732324	5-19-54	90-02-09	18.833
合計				倍面積 面積	263.043864 131.52	-263.043864 131.52			51.678

面積 (座標法) 計算書

地番 = 13-12
測点名

	[1] X (i)	[2] X (i+1)-X (i-1)	[3] Y (i)	[4] Y (i+1)-Y (i-1)	[2] * [3]	[1] * [4]	方向角	夾角	距離
13-99K	-149933.815	-19.451	-41756.431	5.087	812204.339381	-762713.316905	95-21-05	90-01-05	6.873
13-72	-149934.456	18.048	-41749.588	9.588	-753496.564224	-1437571.564128	8-21-21	93-00-16	18.890
13-73	-149915.767	19.451	-41746.843	-5.087	-812017.843193	762621.506729	275-33-25	87-12-04	7.869
13-108K	-149915.005	-18.048	-41754.675	-9.588	753588.374400	1437385.067940	185-20-00	89-46-35	18.892
合計				倍面積 面積	278.306364 139.15	-278.306364 139.15			52.524

面積 (座標法) 計算書

地番 = 13-13

測点名	[1] X (i)	[2] X (i+1) - X (i-1)	[3] Y (i)	[4] Y (i+1) - Y (i-1)	[2] * [3]	[1] * [4]	方向角	夾 角	距 離
13-78K	-149936.580	-18.809	-41726.677	-1.294	784837.067693	194017.934520	95-19-07	88-20-02	1.003
13-101	-149936.673	18.625	-41725.678	3.293	-777140.752750	-493741.464189	6-59-14	91-40-07	18.858
13-102	-149917.955	18.809	-41723.384	1.294	-784775.129656	-193993.833770	275-11-59	88-12-45	1.004
13-79K	-149917.864	-18.625	-41724.384	-3.293	777116.652000	493679.526152	186-59-05	91-47-06	18.856
合計					37.837287	-37.837287			39.721
				倍面積	18.91	18.91			
				面積					