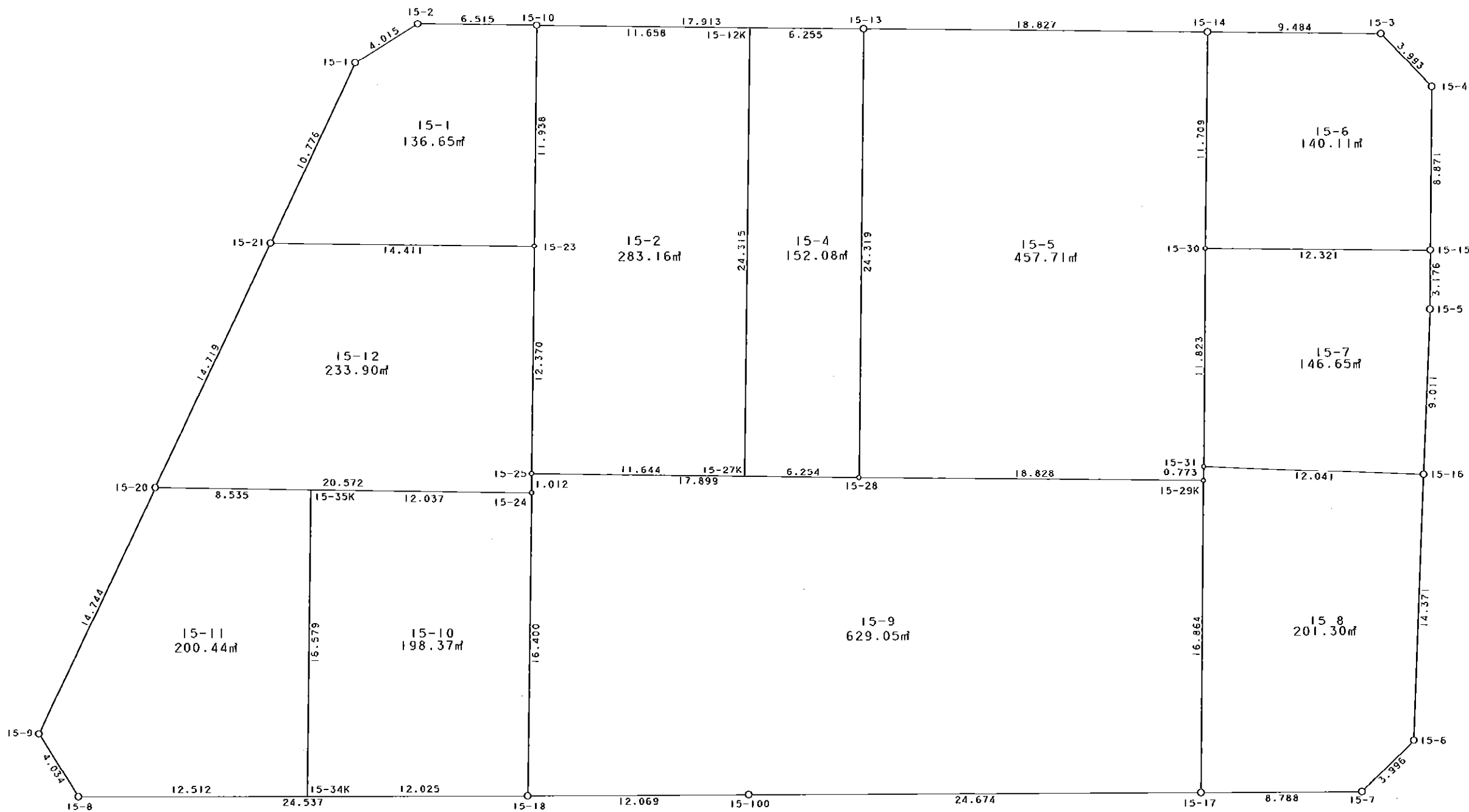


15街区



S = 1 / 250



凡 例

記号	名称
⊙	地区界点
○	街区点
○	画地点 (折れ点)
┆	画地点 (直線中)

地番	筆種別	面積	坪数
15-1	筆界	136.65	41.33
15-2	筆界	283.16	85.65
15-4	筆界	152.08	46.00
15-5	筆界	457.71	138.45
15-6	筆界	140.11	42.38
15-7	筆界	146.65	44.36
15-8	筆界	201.30	60.89
15-9	筆界	629.05	190.28
15-10	筆界	198.37	60.00
15-11	筆界	200.44	60.63
15-12	筆界計	233.90	70.75
	合	2779.42	840.72

面積 (座標法) 計算書

地番 = 15-1
測点名

	[1] X (i)	[2] X (i+1)-X (i-1)	[3] Y (i)	[4] Y (i+1)-Y (i-1)	[2]*[3]	[1]*[4]	方向角	夾角	距離
15-2	-149980.097	-1.236	-41805.746	-10.053	51671.902056	1507749.915141	242-39-22	147-18-06	4.015
15-1	-149981.941	-11.175	-41809.312	-8.956	467219.061600	1343238.263596	210-00-45	147-21-23	10.776
15-21	-149991.272	-10.652	-41814.702	8.960	445410.205704	-1343921.797120	95-15-34	65-14-49	14.411
15-23	-149992.593	10.567	-41800.352	15.443	-441704.319584	-2316335.613699	5-15-11	89-59-37	11.938
15-10	-149980.705	12.496	-41799.259	-5.394	-522323.540464	808995.922770	275-21-16	90-06-05	6.515
合計				倍面積 面積	273.309312 136.65	-273.309312 136.65			47.655

面積 (座標法) 計算書

地番 = 15-2
測点名

	[1] X (i)	[2] X (i+1)-X (i-1)	[3] Y (i)	[4] Y (i+1)-Y (i-1)	[2]*[3]	[1]*[4]	方向角	夾角	距離
15-10	-149980.705	-10.810	-41799.259	-12.701	451849.989790	1904904.934205	185-15-11	89-56-51	11.938
15-23	-149992.593	-24.205	-41800.352	-2.242	1011777.520160	336283.393506	185-19-46	180-04-35	12.370
15-25	-150004.910	-13.400	-41801.501	10.445	560140.113400	-1566801.284950	95-20-12	90-00-26	11.644
15-27K	-150005.993	23.127	-41789.907	13.850	-966475.179189	-2077583.003050	5-19-25	89-59-13	24.315
15-12K	-149981.783	25.288	-41787.651	-9.352	-1056726.118488	1402629.634616	275-18-20	89-58-55	11.658
合計				倍面積 面積	566.325673 283.16	-566.325673 283.16			71.925

面積 (座標法) 計算書

地番 = 15-4
測点名

	[1] X (i)	[2] X (i+1)-X (i-1)	[3] Y (i)	[4] Y (i+1)-Y (i-1)	[2]*[3]	[1]*[4]	方向角	夾角	距離
15-27K	-150005.993	-24.792	-41789.907	3.971	1036055.374344	-595673.798203	95-20-22	90-00-57	6.254
15-28	-150006.575	23.632	-41783.680	8.484	-987431.925760	-1272655.782300	5-19-31	89-59-09	24.319
15-13	-149982.361	24.792	-41781.423	-3.971	-1035845.039016	595579.955531	275-18-08	89-58-37	6.255
15-12K	-149981.783	-23.632	-41787.651	-8.484	987525.768432	1272445.446972	185-19-25	90-01-17	24.315
合計				倍面積 面積	304.178000 152.08	-304.178000 152.08			61.143

面積 (座標法) 計算書

地番 = 15-5
測点名

	[1] X (i)	[2] X (i+1)-X (i-1)	[3] Y (i)	[4] Y (i+1)-Y (i-1)	[2]*[3]	[1]*[4]	方向角	夾角	距離
15-13	-149982.361	-22.469	-41781.423	-21.003	938786.793387	3150079.528083	185-19-31	90-00-26	24.319
15-28	-150006.575	-25.945	-41783.680	16.491	1084077.577600	-2473758.428325	95-16-31	89-57-00	18.828
15-29K	-150008.306	-0.962	-41764.932	18.828	40177.864584	-2824356.385368	5-56-21	90-39-50	0.773
15-31	-150007.537	12.542	-41764.852	1.163	-523814.773784	-174458.765531	5-15-21	179-19-00	11.823
15-30	-149995.764	23.431	-41763.769	2.175	-978566.871439	-326240.786700	5-21-05	180-05-44	11.709
15-14	-149984.106	13.403	-41762.677	-17.654	-559745.159831	2647819.407324	275-19-05	89-58-00	18.827
合計				倍面積 面積	915.430517 457.71	-915.430517 457.71			86.279

面積 (座標法) 計算書

地番 = 15-6
測点名

	[1] X (i)	[2] X (i+1)-X (i-1)	[3] Y (i)	[4] Y (i+1)-Y (i-1)	[2] * [3]	[1] * [4]	方向角	夾角	距離
15-14	-149984.106	-10.780	-41762.677	-10.535	450201.658060	1580082.556710	185-21-05	90-02-22	11.709
15-30	-149995.764	-12.780	-41763.769	11.178	533740.967820	-1676652.649992	95-13-29	89-52-24	12.321
15-15	-149996.886	7.711	-41751.499	13.090	-321945.808789	-1963459.237740	5-18-14	90-04-45	8.871
15-4	-149988.053	11.902	-41750.679	-1.735	-496916.581458	260229.271955	320-13-19	134-55-05	3.993
15-3	-149984.984	3.947	-41753.234	-11.998	-164800.014598	1799519.838032	275-18-43	135-05-24	9.484
合計				倍面積 面積	280.221035 140.11	-280.221035 140.11			46.378

面積 (座標法) 計算書

地番 = 15-7
測点名

	[1] X (i)	[2] X (i+1)-X (i-1)	[3] Y (i)	[4] Y (i+1)-Y (i-1)	[2] * [3]	[1] * [4]	方向角	夾角	距離
15-30	-149995.764	-10.651	-41763.769	-13.353	444825.903619	2002893.436692	185-15-21	90-01-52	11.823
15-31	-150007.537	-13.227	-41764.852	10.870	552423.697404	-1630581.927190	96-56-08	91-40-47	12.041
15-16	-150008.991	7.488	-41752.899	13.062	-312645.707712	-1959417.440442	7-04-11	90-08-03	9.011
15-5	-150000.049	12.105	-41751.790	1.400	-505405.417950	-210000.068600	5-15-23	178-11-12	3.176
15-15	-149996.886	4.285	-41751.499	-11.979	-178905.173215	1796812.697394	275-13-29	89-58-06	12.321
合計				倍面積 面積	293.302146 146.65	-293.302146 146.65			48.372

面積 (座標法) 計算書

地番 = 15-8
測点名

	[1] X (i)	[2] X (i+1)-X (i-1)	[3] Y (i)	[4] Y (i+1)-Y (i-1)	[2] * [3]	[1] * [4]	方向角	夾角	距離
15-31	-150007.537	0.685	-41764.852	-12.033	-28608.923620	1805040.692721	185-56-21	89-00-13	0.773
15-29K	-150008.306	-17.561	-41764.932	-1.641	733433.970852	246163.630146	185-18-40	179-22-19	16.864
15-17	-150025.098	-17.481	-41766.493	7.200	730120.064133	-1080180.705600	94-29-48	89-11-08	8.788
15-7	-150025.787	1.842	-41757.732	11.853	-76917.742344	-1778255.653311	50-41-51	136-12-03	3.996
15-6	-150023.256	16.796	-41754.640	4.833	-701310.933440	-725062.396248	6-57-30	136-15-39	14.371
15-16	-150008.991	15.719	-41752.899	-10.212	-656313.819381	1531891.816092	276-56-08	89-58-38	12.041
合計				倍面積 面積	402.616200 201.30	-402.616200 201.30			56.833

面積 (座標法) 計算書

地番 = 15-9
測点名

	[1] X (i)	[2] X (i+1)-X (i-1)	[3] Y (i)	[4] Y (i+1)-Y (i-1)	[2]*[3]	[1]*[4]	方向角	夾角	距離
15-25	-150004.910	0.657	-41801.501	-17.912	-27463.586157	2686887.947920	185-09-31	89-49-16	1.012
15-24	-150005.918	-17.336	-41801.592	-1.624	724672.398912	243609.610832	185-21-49	180-12-18	16.400
15-18	-150022.246	-17.251	-41803.125	10.501	721145.709375	-1575383.605246	94-23-09	89-01-20	12.069
15-100	-150023.169	-2.852	-41791.091	36.632	119188.191532	-5495648.726808	94-29-02	180-05-53	24.674
15-17	-150025.098	14.863	-41766.493	26.159	-620775.385459	-3924506.538582	5-18-40	90-49-38	16.864
15-29K	-150008.306	18.523	-41764.932	-17.187	-773611.835436	2578192.755222	275-16-31	89-57-51	18.828
15-28	-150006.575	3.396	-41783.680	-36.569	-141897.377280	5485590.441175	275-20-15	180-03-44	17.899
合計				倍面積 面積	1258.115487 629.05	-1258.115487 629.05			107.746

面積 (座標法) 計算書

地番 = 15-10
測点名

	[1] X (i)	[2] X (i+1)-X (i-1)	[3] Y (i)	[4] Y (i+1)-Y (i-1)	[2]*[3]	[1]*[4]	方向角	夾角	距離
15-35K	-150004.802	-15.392	-41813.577	-13.522	643594.577184	2028364.932644	185-19-09	89-59-58	16.579
15-34K	-150021.310	-17.444	-41815.114	10.452	729422.848616	-1568022.732120	94-27-51	89-08-42	12.025
15-18	-150022.246	15.392	-41803.125	13.522	-643433.700000	-2028600.810412	5-21-49	90-53-58	16.400
15-24	-150005.918	17.444	-41801.592	-10.452	-729186.970848	1567861.854936	275-19-11	89-57-22	12.037
合計				倍面積 面積	396.754952 198.37	-396.754952 198.37			57.041

面積 (座標法) 計算書

地番 = 15-11
測点名

	[1] X (i)	[2] X (i+1)-X (i-1)	[3] Y (i)	[4] Y (i+1)-Y (i-1)	[2]*[3]	[1]*[4]	方向角	夾角	距離
15-20	-150004.011	-11.966	-41822.075	-15.891	500442.949450	2383713.738801	210-05-36	114-46-32	14.744
15-9	-150016.768	-16.326	-41829.468	-5.513	682907.894568	827042.441984	152-13-18	122-07-42	4.034
15-8	-150020.337	-4.542	-41827.588	14.354	189980.904696	-2153391.917298	94-27-37	122-14-19	12.512
15-34K	-150021.310	15.535	-41815.114	14.011	-649597.795990	-2101948.574410	5-19-09	90-51-32	16.579
15-35K	-150004.802	17.299	-41813.577	-6.961	-723333.068523	1044183.426722	275-19-04	89-59-55	8.535
合計				倍面積 面積	400.884201 200.44	-400.884201 200.44			56.404

面積 (座標法) 計算書

地番 = 15-12
測点名

	[1] X (i)	[2] X (i+1)-X (i-1)	[3] Y (i)	[4] Y (i+1)-Y (i-1)	[2]*[3]	[1]*[4]	方向角	夾角	距離
15-21	-149991.272	-11.418	-41814.702	-21.723	477440.267436	3258260.401656	210-03-40	114-48-06	14.719
15-20	-150004.011	-14.646	-41822.075	13.110	612526.110450	-1966552.584210	95-19-08	65-15-28	20.572
15-24	-150005.918	-0.899	-41801.592	20.574	37579.631208	-3086221.756932	5-09-31	89-50-23	1.012
15-25	-150004.910	13.325	-41801.501	1.240	-557005.000825	-186006.088400	5-19-46	180-10-15	12.370
15-23	-149992.593	13.638	-41800.352	-13.201	-570073.200576	1980052.220193	275-15-34	89-55-48	14.411
合計				倍面積 面積	467.807693 233.90	-467.807693 233.90			63.084