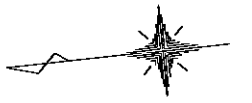
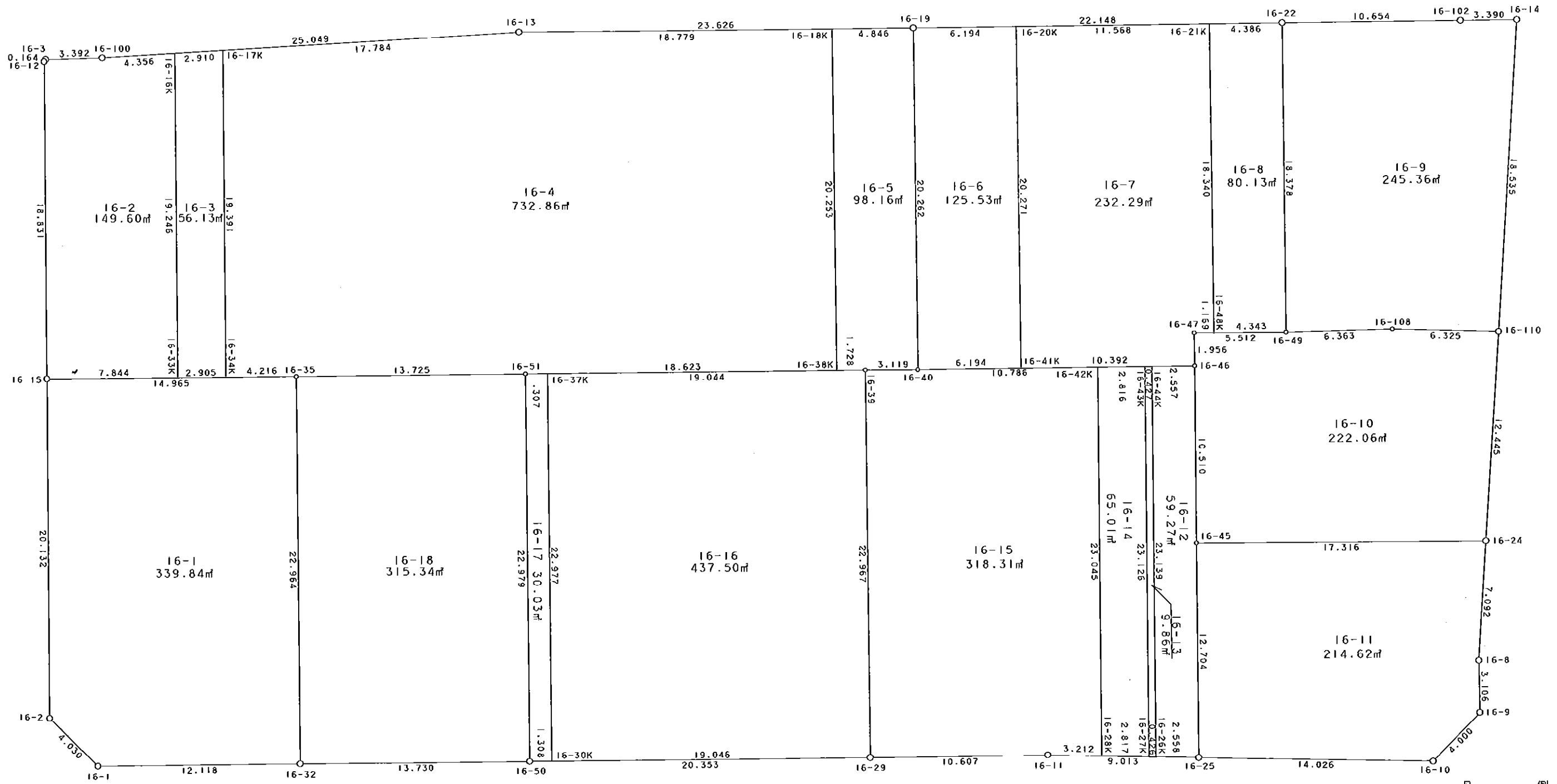


16街区



S = 1 / 250



凡例

記号	名称
⊙	地区界点
○	街区点
○	画地点 (折れ点)
┆	画地点 (直線中)

地番	筆種別	面積	坪数
16-1	筆界	339.84	102.80
16-2	筆界	149.60	45.25
16-3	筆界	56.13	16.97
16-4	筆界	732.86	221.69
16-5	筆界	98.16	29.69
16-6	筆界	125.53	37.97
16-7	筆界	232.29	70.26
16-8	筆界	80.13	24.23
16-9	筆界	245.36	74.22
16-10	筆界	222.06	67.17
16-11	筆界	214.62	64.92
16-12	筆界	59.27	17.93
16-13	筆界	9.86	2.98
16-14	筆界	65.01	19.66
16-15	筆界	318.31	96.29
16-16	筆界	437.50	132.34
16-17	筆界	30.03	9.08
16-18	筆界	315.34	95.39
	合	3731.90	1128.84

面積 (座標法) 計算書

地番 = 16-1  
測点名

	[1] X (i)	[2] X (i+1)-X (i-1)	[3] Y (i)	[4] Y (i+1)-Y (i-1)	[2]*[3]	[1]*[4]	方向角	夾角	距離
16-2	-149941.589	-0.704	-41737.511	-23.137	29383.207744	3469198.544693	230-08-04	134-46-44	4.030
16-1	-149944.172	-14.651	-41740.604	-4.197	611541.589204	629315.689884	185-13-37	135-05-33	12.118
16-32	-149956.240	-14.198	-41741.708	21.761	592648.770184	-3263197.738640	95-19-19	90-05-42	22.964
16-35	-149958.370	12.772	-41718.843	24.241	-532833.062796	-3635140.847170	5-16-32	89-57-13	14.965
16-15	-149943.468	16.781	-41717.467	-18.668	-700060.813727	2799144.660624	275-21-20	90-04-48	20.132
合計				倍面積 面積	679.690609 339.84	-679.690609 339.84			74.209

面積 (座標法) 計算書

地番 = 16-2  
測点名

	[1] X (i)	[2] X (i+1)-X (i-1)	[3] Y (i)	[4] Y (i+1)-Y (i-1)	[2]*[3]	[1]*[4]	方向角	夾角	距離
16-16K	-149953.064	2.567	-41699.025	19.347	-107041.397175	-2901141.929208	2-25-16	87-05-58	4.356
16-100	-149948.712	7.735	-41698.841	0.426	-322540.535135	-63878.151312	4-05-30	181-40-14	3.392
16-3	-149945.329	3.497	-41698.599	0.124	-145820.000703	-18593.220796	314-00-44	129-55-14	0.164
16-12	-149945.215	1.861	-41698.717	-18.868	-77601.312337	2829166.316620	275-19-23	141-18-39	18.831
16-15	-149943.468	-6.064	-41717.467	-19.471	252974.719888	2919549.265428	185-16-26	89-57-03	7.844
16-33K	-149951.279	-9.596	-41718.188	18.442	400327.732048	-2765401.487318	95-19-18	90-02-52	19.246
合計				倍面積 面積	299.206586 149.60	-299.206586 149.60			53.833

面積 (座標法) 計算書

地番 = 16-3  
測点名

	[1] X (i)	[2] X (i+1)-X (i-1)	[3] Y (i)	[4] Y (i+1)-Y (i-1)	[2]*[3]	[1]*[4]	方向角	夾角	距離
16-17K	-149955.971	1.108	-41699.148	19.430	-46202.655984	-2913644.516530	2-25-22	87-05-58	2.910
16-16K	-149953.064	4.692	-41699.025	-19.040	-195651.825300	2855106.338560	275-19-18	92-53-56	19.246
16-33K	-149951.279	-1.108	-41718.188	-19.430	46223.752304	2913553.350970	185-16-23	89-57-05	2.905
16-34K	-149954.172	-4.692	-41718.455	19.040	195742.990860	-2855127.434880	95-19-24	90-03-01	19.391
合計				倍面積 面積	112.261880 56.13	-112.261880 56.13			44.452

面積 (座標法) 計算書

地番 = 16-4  
測点名

	[1] X (i)	[2] X (i+1)-X (i-1)	[3] Y (i)	[4] Y (i+1)-Y (i-1)	[2]*[3]	[1]*[4]	方向角	夾角	距離
16-18K	-149992.436	16.841	-41701.658	21.926	-702297.622378	-3288734.151736	5-22-17	90-06-48	18.779
16-13	-149973.739	36.465	-41699.900	2.510	-1520586.853500	-376434.084890	2-25-25	177-03-08	17.784
16-17K	-149955.971	19.567	-41699.148	-18.555	-815927.228916	2782433.041905	275-19-24	92-53-59	19.391
16-34K	-149954.172	-2.399	-41718.455	-19.695	100082.573545	2953347.417540	185-16-50	89-57-26	4.216
16-35	-149958.370	-17.866	-41718.843	-1.638	745348.849038	245631.810060	185-13-32	179-56-42	13.725
16-51	-149972.038	-32.210	-41720.093	-2.983	1343804.195530	447366.589354	185-20-22	180-06-50	18.623
16-38K	-149990.580	-20.398	-41721.826	18.435	851041.806748	-2765076.342300	95-15-29	89-55-07	20.253
合計				倍面積 面積	1465.720067 732.86	-1465.720067 732.86			112.771

面積 (座標法) 計算書

地番 = 16-5  
測点名

	[1] X (i)	[2] X (i+1)-X (i-1)	[3] Y (i)	[4] Y (i+1)-Y (i-1)	[2]*[3]	[1]*[4]	方向角	夾角	距離
16-38K	-149990.580	0.136	-41721.826	-20.329	-5674.168336	3049158.500820	185-20-51	90-05-22	1.728
16-39	-149992.300	-4.824	-41721.987	-0.463	201266.865288	69446.434900	185-33-25	180-12-34	3.119
16-40	-149995.404	-4.961	-41722.289	19.875	206984.275729	-2981158.654500	95-15-30	89-42-05	20.262
16-19	-149997.261	2.968	-41702.112	20.631	-123771.868416	-3094593.491691	5-22-31	90-07-01	4.846
16-18K	-149992.436	6.681	-41701.658	-19.714	-278608.777098	2956950.883304	275-15-29	89-52-58	20.253
合計				倍面積 面積	196.327167 98.16	-196.327167 98.16			50.208

面積 (座標法) 計算書

地番 = 16-6  
測点名

	[1] X (i)	[2] X (i+1)-X (i-1)	[3] Y (i)	[4] Y (i+1)-Y (i-1)	[2]*[3]	[1]*[4]	方向角	夾角	距離
16-20K	-150003.429	4.310	-41702.679	20.753	-179738.546490	-3113021.162037	5-15-08	89-59-36	6.194
16-19	-149997.261	8.025	-41702.112	-19.610	-334659.448800	2941446.288210	275-15-30	90-00-22	20.262
16-40	-149995.404	-4.310	-41722.289	-20.753	179823.065590	3112854.619212	185-20-09	90-04-39	6.194
16-41K	-150001.571	-8.025	-41722.865	19.610	334825.991625	-2941530.807310	95-15-32	89-55-23	20.271
合計				倍面積 面積	251.061925 125.53	-251.061925 125.53			52.921

面積 (座標法) 計算書

地番 = 16-7  
測点名

	[1] X (i)	[2] X (i+1)-X (i-1)	[3] Y (i)	[4] Y (i+1)-Y (i-1)	[2]*[3]	[1]*[4]	方向角	夾角	距離
16-21K	-150014.948	9.838	-41703.738	19.322	-410281.374444	-2898588.825256	5-15-10	89-59-38	11.568
16-20K	-150003.429	13.377	-41702.679	-19.127	-557856.736983	2869115.586483	275-15-32	90-00-22	20.271
16-41K	-150001.571	-8.489	-41722.865	-21.152	354185.400985	3172833.229792	185-20-01	90-04-29	10.392
16-46	-150011.918	-10.533	-41723.831	0.981	439477.111923	-147161.691558	95-27-25	90-07-24	1.956
16-47	-150012.104	-1.349	-41721.884	1.830	56282.821516	-274522.150320	185-44-41	270-17-16	1.169
16-48K	-150013.267	-2.844	-41722.001	18.146	118657.370844	-2722140.742982	95-15-32	89-30-51	18.340
合計				倍面積 面積	464.593841 232.29	-464.593841 232.29			63.696

面積 (座標法) 計算書

地番 = 16-8  
測点名

	[1] X (i)	[2] X (i+1)-X (i-1)	[3] Y (i)	[4] Y (i+1)-Y (i-1)	[2]*[3]	[1]*[4]	方向角	夾角	距離
16-48K	-150013.267	-2.640	-41722.001	-18.699	110146.082640	2805098.079633	185-45-42	90-30-10	4.343
16-49	-150017.588	-6.049	-41722.437	17.861	252379.021413	-2679464.139268	95-23-42	89-38-00	18.378
16-22	-150019.316	2.640	-41704.140	18.699	-110098.929600	-2805211.189884	5-15-30	89-51-48	4.386
16-21K	-150014.948	6.049	-41703.738	-17.861	-252265.911162	2679416.986228	275-15-32	90-00-02	18.340
合計				倍面積 面積	160.263291 80.13	-160.263291 80.13			45.447

面積 (座標法) 計算書

地番 = 16-9  
測点名

	[1] X (i)	[2] X (i+1)-X (i-1)	[3] Y (i)	[4] Y (i+1)-Y (i-1)	[2]*[3]	[1]*[4]	方向角	夾角	距離
16-49	-150017.588	-4.617	-41722.437	-18.777	192632.491629	2816880.249876	184-19-34	88-55-52	6.363
16-108	-150023.933	-12.617	-41722.917	-1.299	526418.043789	194881.088967	187-26-23	183-06-49	6.325
16-110	-150030.205	-9.365	-41723.736	17.456	390742.787640	-2618927.258480	99-36-22	92-09-59	18.535
16-14	-150033.298	0.281	-41705.461	18.609	-11719.234541	-2791969.642482	5-39-12	86-02-50	3.390
16-102	-150029.924	13.982	-41705.127	1.321	-583121.085714	-198189.529604	5-18-56	179-39-44	10.654
16-22	-150019.316	12.336	-41704.140	-17.310	-514462.271040	2596834.359960	275-23-42	90-04-46	18.378
合計				倍面積 面積	490.731763 245.36	-490.731763 245.36			63.645

面積 (座標法) 計算書

地番 = 16-10  
測点名

	[1] X (i)	[2] X (i+1)-X (i-1)	[3] Y (i)	[4] Y (i+1)-Y (i-1)	[2]*[3]	[1]*[4]	方向角	夾角	距離
16-45	-150010.908	-16.221	-41734.292	-12.177	676971.950532	1826682.826716	185-41-14	90-10-21	17.316
16-24	-150028.139	-19.297	-41736.008	10.556	805379.746376	-1583697.035284	99-33-22	93-52-08	12.445
16-110	-150030.205	4.206	-41723.736	13.091	-175490.033616	-1964045.413655	7-26-23	87-53-01	6.325
16-108	-150023.933	12.617	-41722.917	1.299	-526418.043789	-194881.088967	4-19-34	176-53-11	6.363
16-49	-150017.588	11.829	-41722.437	1.033	-493534.707273	-154968.168404	5-45-29	181-25-55	5.512
16-47	-150012.104	5.670	-41721.884	-1.394	-236563.082280	209116.872976	275-27-25	89-41-56	1.956
16-46	-150011.918	1.196	-41723.831	-12.408	-49901.701876	1861347.878544	275-30-53	180-03-28	10.510
合計				倍面積 面積	444.128074 222.06	-444.128074 222.06			60.427

面積 (座標法) 計算書

地番 = 16-11  
測点名

	[1] X (i)	[2] X (i+1)-X (i-1)	[3] Y (i)	[4] Y (i+1)-Y (i-1)	[2]*[3]	[1]*[4]	方向角	夾角	距離
16-25	-150009.685	-12.699	-41746.937	-14.350	530144.352963	2152638.979750	186-58-56	91-27-28	14.026
16-10	-150023.607	-17.006	-41748.642	0.842	709977.405852	-126319.877094	140-26-51	133-27-55	4.000
16-9	-150026.691	-3.352	-41746.095	5.641	139932.910440	-846300.563931	94-57-02	134-30-11	3.106
16-8	-150026.959	-1.448	-41743.001	10.087	60443.865448	-1513321.935433	99-34-40	184-37-38	7.092
16-24	-150028.139	16.051	-41736.008	8.709	-669904.664408	-1306595.062551	5-41-14	86-06-34	17.316
16-45	-150010.908	18.454	-41734.292	-10.929	-770164.624568	1639469.213532	275-31-28	89-50-14	12.704
合計				倍面積 面積	429.245727 214.62	-429.245727 214.62			58.244

面積 (座標法) 計算書

地番 = 16-12  
測点名

	[1] X (i)	[2] X (i+1)-X (i-1)	[3] Y (i)	[4] Y (i+1)-Y (i-1)	[2]*[3]	[1]*[4]	方向角	夾角	距離
16-26K	-150007.146	-0.313	-41746.625	-23.344	13066.693625	3501766.816224	187-00-20	91-29-07	2.558
16-25	-150009.685	-3.762	-41746.937	12.333	157051.976994	-1850069.445105	95-31-28	88-31-08	12.704
16-45	-150010.908	-2.233	-41734.292	23.106	93192.674036	-3466152.040248	95-30-53	179-59-25	10.510
16-46	-150011.918	1.536	-41723.831	10.699	-64087.804416	-1604977.510682	5-20-26	89-49-33	2.557
16-44K	-150009.372	4.772	-41723.593	-22.794	-199104.985796	3419313.625368	275-31-13	90-10-47	23.139
合計				倍面積 面積	118.554443 59.27	-118.554443 59.27			51.468

面積 (座標法) 計算書

地番 = 16-13  
測点名

	[1] X (i)	[2] X (i+1)-X (i-1)	[3] Y (i)	[4] Y (i+1)-Y (i-1)	[2]*[3]	[1]*[4]	方向角	夾角	距離
16-27K	-150006.723	1.801	-41746.573	-23.071	-75185.577973	3460805.106333	187-00-30	91-29-23	0.426
16-26K	-150007.146	-2.649	-41746.625	22.980	110586.809625	-3447164.215080	95-31-13	88-30-43	23.139
16-44K	-150009.372	-1.801	-41723.593	23.071	75144.190993	-3460866.221412	5-14-35	89-43-22	0.427
16-43K	-150008.947	2.649	-41723.554	-22.980	-110525.694546	3447205.602060	275-31-07	90-16-32	23.126
合計				倍面積 面積	19.728099 9.86	-19.728099 9.86			47.118

面積 (座標法) 計算書

地番 = 16-14  
測点名

	[1] X (i)	[2] X (i+1)-X (i-1)	[3] Y (i)	[4] Y (i+1)-Y (i-1)	[2]*[3]	[1]*[4]	方向角	夾角	距離
16-28K	-150003.927	-0.580	-41746.230	-23.281	24212.813400	3492241.424487	186-59-38	91-28-33	2.817
16-27K	-150006.723	-5.020	-41746.573	22.676	209567.796460	-3401552.450748	95-31-07	88-31-29	23.126
16-43K	-150008.947	0.580	-41723.554	23.281	-24199.661320	-3492358.295107	5-20-17	89-49-10	2.816
16-42K	-150006.143	5.020	-41723.292	-22.676	-209450.925840	3401539.298668	275-31-05	90-10-48	23.045
合計				倍面積 面積	130.022700 65.01	-130.022700 65.01			51.804

面積 (座標法) 計算書

地番 = 16-15  
測点名

	[1] X (i)	[2] X (i+1)-X (i-1)	[3] Y (i)	[4] Y (i+1)-Y (i-1)	[2]*[3]	[1]*[4]	方向角	夾角	距離
16-42K	-150006.143	8.523	-41723.292	23.941	-355607.617716	-3591297.069563	5-20-09	89-49-04	10.786
16-40	-149995.404	13.843	-41722.289	1.305	-577561.646627	-195744.002220	5-33-25	180-13-16	3.119
16-39	-149992.300	5.226	-41721.987	-22.567	-218039.104062	3384876.234100	275-18-05	89-44-40	22.967
16-29	-149990.178	-8.439	-41744.856	-23.852	352284.839784	3577565.725656	185-19-04	90-00-59	10.607
16-11	-150000.739	-13.749	-41745.839	-1.374	573963.540411	206101.015386	186-59-32	181-40-28	3.212
16-28K	-150003.927	-5.404	-41746.230	22.547	225596.626920	-3382138.542069	95-31-05	88-31-33	23.045
合計				倍面積 面積	636.638710 318.31	-636.638710 318.31			73.736

面積 (座標法) 計算書

地番 = 16-16

測点名	[1] X (i)	[2] X (i+1)-X (i-1)	[3] Y (i)	[4] Y (i+1)-Y (i-1)	[2] * [3]	[1] * [4]	方向角	夾 角	距 離
16-30K	-149971.214	-16.839	-41743.094	-24.641	702911.959866	3695440.684174	185-18-30	90-00-07	19.046
16-29	-149990.178	-21.086	-41744.856	21.107	880232.033616	-3165842.687046	95-18-05	89-59-35	22.967
16-39	-149992.300	16.839	-41721.987	24.641	-702556.539093	-3695960.264300	5-20-21	90-02-16	19.044
16-37K	-149973.339	21.086	-41720.215	-21.107	-879712.453490	3165487.266273	275-18-23	89-58-02	22.977
合計				倍面積 面積	875.000899 437.50	-875.000899 437.50			84.034

面積 (座標法) 計算書

地番 = 16-17

測点名	[1] X (i)	[2] X (i+1)-X (i-1)	[3] Y (i)	[4] Y (i+1)-Y (i-1)	[2] * [3]	[1] * [4]	方向角	夾 角	距 離
16-37K	-149973.339	-0.824	-41720.215	23.001	34377.457160	-3449536.770339	5-21-26	90-03-03	1.307
16-51	-149972.038	3.427	-41720.093	-22.758	-142974.758711	3413063.640804	275-18-31	89-57-05	22.979
16-50	-149969.912	0.824	-41742.973	-23.001	-34396.209752	3449457.945912	185-18-34	90-00-03	1.308
16-30K	-149971.214	-3.427	-41743.094	22.758	143053.583138	-3413044.888212	95-18-23	89-59-49	22.977
合計				倍面積 面積	60.071835 30.03	-60.071835 30.03			48.571

面積 (座標法) 計算書

地番 = 16-18

測点名	[1] X (i)	[2] X (i+1)-X (i-1)	[3] Y (i)	[4] Y (i+1)-Y (i-1)	[2] * [3]	[1] * [4]	方向角	夾 角	距 離
16-32	-149956.240	-11.542	-41741.708	-24.130	481782.793736	3618444.071200	185-17-10	89-57-51	13.730
16-50	-149969.912	-15.798	-41742.973	21.615	659455.487454	-3241599.647880	95-18-31	90-01-21	22.979
16-51	-149972.038	11.542	-41720.093	24.130	-481533.313406	-3618825.276940	5-13-32	89-55-01	13.725
16-35	-149958.370	15.798	-41718.843	-21.615	-659074.281714	3241350.167550	275-19-19	90-05-47	22.964
合計				倍面積 面積	630.686070 315.34	-630.686070 315.34			73.398