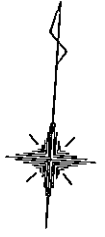
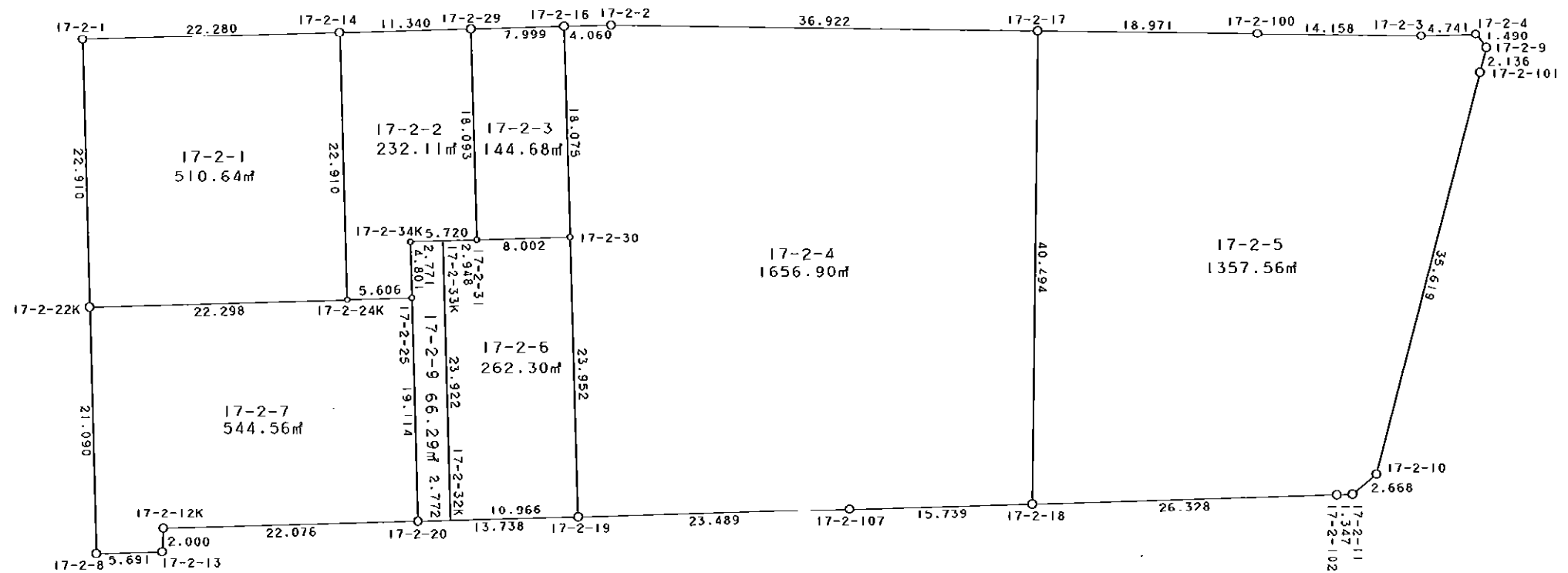


西部第5地区土地区画整理事業 出来形確認測量 (原子図)

17-2街区



S = 1 / 500



凡 例

記号	名称
⊙	地区界点
○	街区点
○	画地点 (折れ点)
┌	画地点 (直線中)

地番	筆種別	面積	坪数
17-2-1	筆界	510.64	154.46
17-2-2	筆界	232.11	70.21
17-2-3	筆界	144.68	43.76
17-2-4	筆界	1656.90	501.21
17-2-5	筆界	1357.56	410.66
17-2-6	筆界	262.30	79.34
17-2-7	筆界	544.56	164.73
17-2-9	筆界	66.29	20.05
	合計	4775.04	1444.42

面積 (座標法) 計算書

地番 = 17-2-1
測点名

	[1] X (i)	[2] X (i+1)-X (i-1)	[3] Y (i)	[4] Y (i+1)-Y (i-1)	[2]*[3]	[1]*[4]	方向角	夾角	距離
17-2-1	-149873.256	-24.963	-41614.213	-19.962	1038815.599119	2991769.936272	174-27-25	90-01-13	22.910
17-2-22K	-149896.059	-20.641	-41612.000	24.406	858913.292000	-3658363.215954	84-26-09	89-58-44	22.298
17-2-24K	-149893.897	24.963	-41589.807	19.962	-1038206.352141	-2992181.971914	354-24-42	89-58-33	22.910
17-2-14	-149871.096	20.641	-41592.038	-24.406	-858501.256358	3657753.968976	264-26-12	90-01-30	22.280
合計				倍面積 面積	1021.282620 510.64	-1021.282620 510.64			90.398

面積 (座標法) 計算書

地番 = 17-2-2
測点名

	[1] X (i)	[2] X (i+1)-X (i-1)	[3] Y (i)	[4] Y (i+1)-Y (i-1)	[2]*[3]	[1]*[4]	方向角	夾角	距離
17-2-14	-149871.096	-23.901	-41592.038	-9.056	994091.300238	1357232.645376	174-24-42	89-58-41	22.910
17-2-24K	-149893.897	-22.251	-41589.807	7.810	925414.795557	-1170671.335570	84-22-11	89-57-29	5.606
17-2-25	-149893.347	5.329	-41584.228	5.116	-221602.351012	-766854.363252	354-27-59	90-05-48	4.801
17-2-34K	-149888.568	5.343	-41584.691	5.229	-222187.004013	-783767.322072	84-20-28	269-52-29	5.720
17-2-31	-149888.004	18.572	-41578.999	3.940	-772205.169428	-590558.735760	354-26-35	90-06-07	18.093
17-2-29	-149869.996	16.908	-41580.751	-13.039	-703047.337908	1954154.877844	264-26-01	89-59-26	11.340
合計				倍面積 面積	464.233434 232.11	-464.233434 232.11			68.470

面積 (座標法) 計算書

地番 = 17-2-3
測点名

	[1] X (i)	[2] X (i+1)-X (i-1)	[3] Y (i)	[4] Y (i+1)-Y (i-1)	[2]*[3]	[1]*[4]	方向角	夾角	距離
17-2-29	-149869.996	-18.782	-41580.751	-6.209	780969.665282	930542.805164	174-26-35	89-59-46	18.093
17-2-31	-149888.004	-17.216	-41578.999	9.715	715824.046784	-1456161.958860	84-19-12	89-52-37	8.002
17-2-30	-149887.212	18.782	-41571.036	6.209	-780787.198152	-930649.699308	354-25-53	90-06-41	18.075
17-2-16	-149869.222	17.216	-41572.790	-9.715	-715717.152640	1455979.491730	264-26-49	90-00-56	7.999
合計				倍面積 面積	289.361274 144.68	-289.361274 144.68			52.169

面積 (座標法) 計算書

地番 = 17-2-4
測点名

	[1] X (i)	[2] X (i+1)-X (i-1)	[3] Y (i)	[4] Y (i+1)-Y (i-1)	[2]*[3]	[1]*[4]	方向角	夾角	距離
17-2-16	-149869.222	-18.378	-41572.790	-2.287	764024.734620	342750.910714	174-25-53	89-54-57	18.075
17-2-30	-149887.212	-41.829	-41571.036	4.081	1738874.864844	-611689.712172	174-25-29	179-59-36	23.952
17-2-19	-149911.051	-21.553	-41568.709	25.704	895930.385077	-3853313.654904	84-24-54	89-59-25	23.489
17-2-107	-149908.765	3.801	-41545.332	39.043	-157913.806932	-5852887.911895	84-28-35	180-03-41	15.739
17-2-18	-149907.250	41.948	-41529.666	13.450	-1742086.429368	-2016252.512500	356-51-47	92-23-12	40.494
17-2-17	-149866.817	38.416	-41531.882	-39.083	-1595488.778912	5857244.808811	266-52-06	90-00-19	36.922
17-2-2	-149868.834	-2.405	-41568.749	-40.908	99972.841345	6130834.261272	264-30-56	177-38-50	4.060
合計				倍面積 面積	3313.810674 1656.90	-3313.810674 1656.90			162.731

面積 (座標法) 計算書

地番 = 17-2-5
測点名

	[1] X (i)	[2] X (i+1)-X (i-1)	[3] Y (i)	[4] Y (i+1)-Y (i-1)	[2]*[3]	[1]*[4]	方向角	夾角	距離
17-2-17	-149866.817	-41.464	-41531.882	-16.727	1722077.955248	2506822.247959	176-51-47	89-58-42	40.494
17-2-18	-149907.250	-37.882	-41529.666	28.420	1573226.807412	-4260364.045000	84-26-23	87-34-36	26.328
17-2-102	-149904.699	2.678	-41503.462	27.545	-111146.271236	-4129124.933955	84-35-24	180-09-01	1.347
17-2-11	-149904.572	1.941	-41502.121	3.298	-80555.616861	-494385.278456	47-10-18	142-34-54	2.668
17-2-10	-149902.758	36.803	-41500.164	8.625	-1527330.535692	-1292911.287750	10-47-23	143-37-05	35.619
17-2-101	-149867.769	37.086	-41493.496	7.076	-1538827.792656	-1060464.333444	11-00-36	180-13-13	2.136
17-2-9	-149865.672	3.206	-41493.088	-0.587	-133026.840128	87971.149464	318-06-05	127-05-29	1.490
17-2-4	-149864.563	0.640	-41494.083	-5.713	-26556.213120	856176.248419	264-19-23	126-13-18	4.741
17-2-3	-149865.032	-1.223	-41498.801	-18.856	50753.033623	2825855.043392	266-56-50	182-37-27	14.158
17-2-100	-149865.786	-1.785	-41512.939	-33.081	74100.596115	4957710.066666	266-53-05	179-56-15	18.971
合計				倍面積 面積	2715.122705 1357.56	-2715.122705 1357.56			147.952

面積 (座標法) 計算書

地番 = 17-2-6
測点名

	[1] X (i)	[2] X (i+1)-X (i-1)	[3] Y (i)	[4] Y (i+1)-Y (i-1)	[2]*[3]	[1]*[4]	方向角	夾角	距離
17-2-32K	-149912.105	-22.756	-41579.624	13.224	946185.923744	-1982437.676520	84-29-04	90-01-24	10.966
17-2-19	-149911.051	24.893	-41568.709	8.588	-1034769.873137	-1287436.105988	354-25-29	89-56-25	23.952
17-2-30	-149887.212	23.047	-41571.036	-10.290	-958087.666692	1542339.411480	264-19-12	89-53-43	8.002
17-2-31	-149888.004	-1.083	-41578.999	-10.897	45030.055917	1633329.579588	264-20-09	180-00-57	2.948
17-2-33K	-149888.295	-24.101	-41581.933	-0.625	1002166.167233	93680.184375	174-27-40	90-07-31	23.922
合計				倍面積 面積	524.607065 262.30	-524.607065 262.30			69.790

面積 (座標法) 計算書

地番 = 17-2-7
測点名

	[1] X (i)	[2] X (i+1)-X (i-1)	[3] Y (i)	[4] Y (i+1)-Y (i-1)	[2]*[3]	[1]*[4]	方向角	夾角	距離
17-2-22K	-149896.059	-23.154	-41612.000	-20.162	963484.248000	3022204.341558	174-28-26	90-02-17	21.090
17-2-8	-149917.051	-20.443	-41609.969	7.695	850632.596267	-1153611.707445	84-27-49	89-59-23	5.691
17-2-13	-149916.502	2.548	-41604.305	5.613	-106007.769140	-841481.325726	358-32-19	94-04-30	2.000
17-2-12K	-149914.503	4.130	-41604.356	21.922	-171825.990280	-3286425.734766	84-27-38	265-55-19	22.076
17-2-20	-149912.372	21.156	-41582.383	20.128	-879716.894748	-3017436.223616	354-27-39	90-00-01	19.114
17-2-25	-149893.347	18.475	-41584.228	-7.424	-768268.612300	1112808.208128	264-22-11	89-54-32	5.606
17-2-24K	-149893.897	-2.712	-41589.807	-27.772	112791.556584	4162853.307484	264-26-09	180-03-58	22.298
合計				倍面積 面積	1089.134383 544.56	-1089.134383 544.56			97.875

面積 (座標法) 計算書

地番 = 17-2-9

測点名	[1] X (i)	[2] X (i+1) - X (i-1)	[3] Y (i)	[4] Y (i+1) - Y (i-1)	[2] * [3]	[1] * [4]	方向角	夾 角	距 離
17-2-33K	-149888.295	23.537	-41581.933	-5.067	-978713.957021	759483.990765	264-20-49	89-53-09	2.771
17-2-34K	-149888.568	-5.052	-41584.691	-2.295	210085.858932	343994.263560	174-27-59	90-07-10	4.801
17-2-25	-149893.347	-23.804	-41584.228	2.308	989870.963312	-345953.844876	174-27-39	179-59-40	19.114
17-2-20	-149912.372	-18.758	-41582.383	4.604	780002.340314	-690196.560688	84-28-21	90-00-42	2.772
17-2-32K	-149912.105	24.077	-41579.624	0.450	-1001112.607048	-67460.447250	354-27-40	89-59-19	23.922
合計				倍面積 面積	132.598489 66.29	-132.598489 66.29			53.380