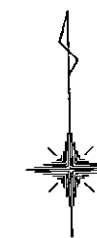
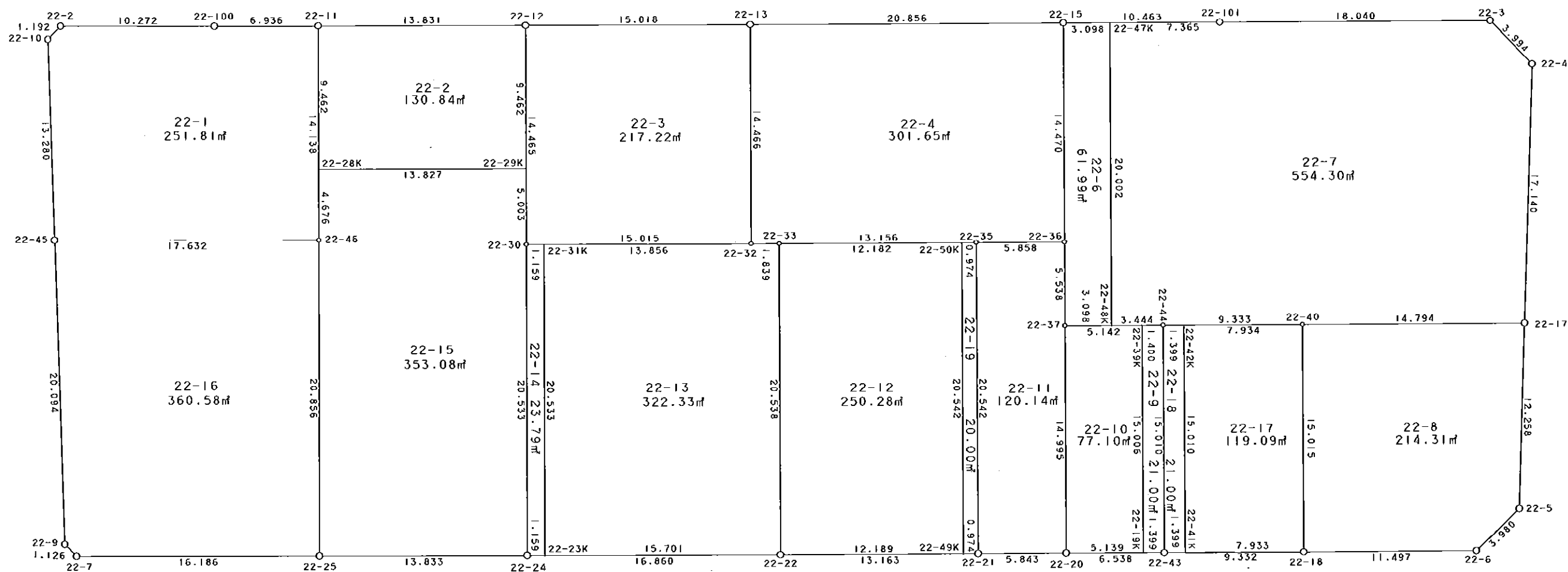


西部第5地区土地区画整理事業 出来形確認測量 (原子図)

22街区



S = 1 / 300



凡 例

記号	名称
⊙	地区界点
○	街区点
○	画地点(折れ点)
┆	画地点(直線中)

地番	筆種別	面積	坪数
22-1	筆界	251.81	76.17
22-2	筆界	130.84	39.58
22-3	筆界	217.22	65.71
22-4	筆界	301.65	91.25
22-6	筆界	61.99	18.75
22-7	筆界	554.30	167.67
22-8	筆界	214.31	64.83
22-9	筆界	21.00	6.35
22-10	筆界	77.10	23.32
22-11	筆界	120.14	36.34
22-12	筆界	250.28	75.71
22-13	筆界	322.33	97.50
22-14	筆界	23.79	7.19
22-15	筆界	353.08	106.80
22-16	筆界	360.58	109.07
22-17	筆界	119.09	36.02
22-18	筆界	21.00	6.35
22-19	筆界	20.00	6.05
	合計	3420.51	1034.66

面積 (座標法) 計算書

地番 = 22-1  
測点名

	[1] X (i)	[2] X (i+1)-X (i-1)	[3] Y (i)	[4] Y (i+1)-Y (i-1)	[2] * [3]	[1] * [4]	方向角	夾角	距離
22-2	-149964.549	-0.696	-41600.337	-11.118	28953.834552	1667305.855782	225-16-19	134-28-27	1.192
22-10	-149965.388	-14.117	-41601.184	-0.593	587283.914528	88929.475084	178-54-15	133-37-56	13.280
22-45	-149978.666	-13.523	-41600.930	17.884	562569.376390	-2682218.462744	90-47-46	91-53-31	17.632
22-46	-149978.911	13.892	-41583.300	17.800	-577675.203600	-2669624.615800	0-41-20	89-53-34	14.138
22-11	-149964.774	14.219	-41583.130	-6.766	-591270.525470	1014661.660884	270-40-38	89-59-18	6.936
22-100	-149964.692	0.225	-41590.066	-17.207	-9357.764850	2580442.455244	270-47-52	180-07-14	10.272
合計				倍面積 面積	503.631550 251.81	-503.631550 251.81			63.450

面積 (座標法) 計算書

地番 = 22-2  
測点名

	[1] X (i)	[2] X (i+1)-X (i-1)	[3] Y (i)	[4] Y (i+1)-Y (i-1)	[2] * [3]	[1] * [4]	方向角	夾角	距離
22-29K	-149974.405	9.291	-41569.418	13.944	-386221.462638	-2091243.103320	0-42-52	90-00-36	9.462
22-12	-149964.944	9.631	-41569.300	-13.712	-400353.928300	2056319.312128	270-42-15	89-59-23	13.831
22-11	-149964.774	-9.291	-41583.130	-13.944	386348.860830	2091108.808656	180-41-25	89-59-10	9.462
22-28K	-149974.235	-9.631	-41583.244	13.712	400488.222964	-2056446.710320	90-42-16	90-00-51	13.827
合計				倍面積 面積	261.692856 130.84	-261.692856 130.84			46.582

面積 (座標法) 計算書

地番 = 22-3  
測点名

	[1] X (i)	[2] X (i+1)-X (i-1)	[3] Y (i)	[4] Y (i+1)-Y (i-1)	[2] * [3]	[1] * [4]	方向角	夾角	距離
22-12	-149964.944	-14.272	-41569.300	-15.198	593277.049600	2279167.218912	180-43-01	89-59-04	14.465
22-30	-149979.408	-14.657	-41569.481	14.833	609283.883017	-2224644.558864	90-44-11	90-01-10	15.015
22-32	-149979.601	14.272	-41554.467	15.198	-593065.353024	-2279389.975998	0-43-44	89-59-33	14.466
22-13	-149965.136	14.657	-41554.283	-14.833	-609061.125931	2224432.862288	270-43-57	90-00-13	15.018
合計				倍面積 面積	434.453662 217.22	-434.453662 217.22			58.964

面積 (座標法) 計算書

地番 = 22-4  
測点名

	[1] X (i)	[2] X (i+1)-X (i-1)	[3] Y (i)	[4] Y (i+1)-Y (i-1)	[2] * [3]	[1] * [4]	方向角	夾角	距離
22-13	-149965.136	-14.210	-41554.283	-21.038	590486.361430	3154966.531168	180-43-44	90-01-42	14.466
22-32	-149979.601	-14.485	-41554.467	1.655	601916.454495	-248216.239655	90-37-23	89-53-39	1.839
22-33	-149979.621	-0.182	-41552.628	14.994	7562.578296	-2248794.437274	90-42-20	180-04-57	13.156
22-35	-149979.783	-0.239	-41539.473	19.012	9927.934047	-2851415.634396	90-45-12	180-02-52	5.858
22-36	-149979.860	14.392	-41533.616	6.044	-597751.801472	-906478.273840	0-44-26	89-59-14	14.470
22-15	-149965.391	14.724	-41533.429	-20.667	-611538.208596	3099334.735797	270-42-02	89-57-36	20.856
合計				倍面積 面積	603.318200 301.65	-603.318200 301.65			70.645

面積 (座標法) 計算書

地番 = 22-6  
測点名

	[1] X (i)	[2] X (i+1)-X (i-1)	[3] Y (i)	[4] Y (i+1)-Y (i-1)	[2]*[3]	[1]*[4]	方向角	夾角	距離
22-47K	-149965.434	20.043	-41530.331	-2.841	-832392.424233	426051.797994	270-47-43	90-03-33	3.098
22-15	-149965.391	-14.426	-41533.429	-3.285	599161.246754	492636.309435	180-44-26	89-56-43	14.470
22-36	-149979.860	-20.007	-41533.616	-0.257	830963.055312	38544.824020	180-43-27	179-59-01	5.538
22-37	-149985.398	-5.574	-41533.686	3.028	231508.765764	-454155.785144	90-39-57	89-56-30	3.098
22-48K	-149985.434	19.964	-41530.588	3.355	-829116.658832	-503201.131070	0-44-10	90-04-13	20.002
合計				倍面積 面積	123.984765 61.99	-123.984765 61.99			46.206

面積 (座標法) 計算書

地番 = 22-7  
測点名

	[1] X (i)	[2] X (i+1)-X (i-1)	[3] Y (i)	[4] Y (i+1)-Y (i-1)	[2]*[3]	[1]*[4]	方向角	夾角	距離
22-48K	-149985.434	-20.041	-41530.588	3.187	832314.514108	-478003.578158	90-40-55	89-56-45	3.444
22-44	-149985.475	-0.158	-41527.144	12.776	6561.288752	-1916214.428600	90-43-06	180-02-11	9.333
22-40	-149985.592	-0.304	-41517.812	24.125	12621.414848	-3618402.407000	90-43-27	180-00-21	14.794
22-17	-149985.779	16.933	-41503.019	15.625	-702770.620727	-2343527.796875	2-46-56	92-03-29	17.140
22-4	-149968.659	20.025	-41502.187	-1.909	-831081.294675	286290.170031	316-39-50	133-52-54	3.994
22-3	-149965.754	3.124	-41504.928	-20.780	-129661.395072	3116288.368120	270-41-44	134-01-54	18.040
22-101	-149965.535	0.320	-41522.967	-25.403	-13287.349440	3809574.485605	270-47-09	180-05-25	7.365
22-47K	-149965.434	-19.899	-41530.331	-7.621	826412.056569	1142886.572514	180-44-10	89-57-01	20.002
合計				倍面積 面積	1108.614363 554.30	-1108.614363 554.30			94.112

面積 (座標法) 計算書

地番 = 22-8  
測点名

	[1] X (i)	[2] X (i+1)-X (i-1)	[3] Y (i)	[4] Y (i+1)-Y (i-1)	[2]*[3]	[1]*[4]	方向角	夾角	距離
22-40	-149985.592	-14.827	-41517.812	-14.986	615584.598524	2247684.081712	180-44-11	90-00-44	15.015
22-18	-150000.606	-15.152	-41518.005	11.303	629080.811760	-1695456.849618	90-41-16	89-57-05	11.497
22-6	-150000.744	2.583	-41506.509	14.401	-107211.312747	-2160160.714344	46-52-24	136-11-08	3.980
22-5	-149998.023	14.965	-41503.604	3.490	-621101.433860	-523493.100270	2-44-08	135-51-44	12.258
22-17	-149985.779	12.431	-41503.019	-14.208	-515924.029189	2130997.948032	270-43-27	87-59-19	14.794
合計				倍面積 面積	428.634488 214.31	-428.634488 214.31			57.544

面積 (座標法) 計算書

地番 = 22-9  
測点名

	[1] X (i)	[2] X (i+1)-X (i-1)	[3] Y (i)	[4] Y (i+1)-Y (i-1)	[2]*[3]	[1]*[4]	方向角	夾角	距離
22-19K	-150000.464	-15.025	-41528.735	1.208	623969.243375	-181200.560512	90-49-09	90-05-24	1.399
22-43	-150000.484	14.989	-41527.336	1.591	-622453.239304	-238650.770044	0-43-58	89-54-49	15.010
22-44	-149985.475	15.025	-41527.144	-1.208	-623945.338600	181182.453800	270-39-17	89-55-19	1.400
22-39K	-149985.459	-14.989	-41528.544	-1.591	622471.346016	238626.865269	180-43-45	90-04-28	15.006
合計				倍面積 面積	42.011487 21.00	-42.011487 21.00			32.815

面積 (座標法) 計算書

地番 = 22-10

測点名	[1] X (i)	[2] X (i+1)-X (i-1)	[3] Y (i)	[4] Y (i+1)-Y (i-1)	[2] * [3]	[1] * [4]	方向角	夾 角	距 離
22-39K	-149985.459	15.066	-41528.544	-4.951	-625669.043904	742578.007509	270-40-47	89-57-02	5.142
22-37	-149985.398	-14.933	-41533.686	-5.329	620222.533038	799272.185942	180-42-52	90-02-05	14.995
22-20	-150000.392	-15.066	-41533.873	4.951	625749.330618	-742651.940792	90-48-10	90-05-18	5.139
22-19K	-150000.464	14.933	-41528.735	5.329	-620148.599755	-799352.472656	0-43-45	89-55-35	15.006
合計				倍面積 面積	154.219997 77.10	-154.219997 77.10			40.282

面積 (座標法) 計算書

地番 = 22-11

測点名	[1] X (i)	[2] X (i+1)-X (i-1)	[3] Y (i)	[4] Y (i+1)-Y (i-1)	[2] * [3]	[1] * [4]	方向角	夾 角	距 離
22-35	-149979.783	-20.464	-41539.473	-6.100	850063.775472	914876.676300	180-40-40	89-55-28	20.542
22-21	-150000.324	-20.609	-41539.716	5.600	856092.007044	-840001.814400	90-40-00	89-59-20	5.843
22-20	-150000.392	14.926	-41533.873	6.030	-619934.588398	-904502.363760	0-42-52	90-02-52	14.995
22-37	-149985.398	20.532	-41533.686	0.257	-852769.640952	-38546.247286	0-43-27	180-00-35	5.538
22-36	-149979.860	5.615	-41533.616	-5.787	-233211.253840	867933.449820	270-45-12	90-01-45	5.858
合計				倍面積 面積	240.299326 120.14	-240.299326 120.14			52.776

面積 (座標法) 計算書

地番 = 22-12

測点名	[1] X (i)	[2] X (i+1)-X (i-1)	[3] Y (i)	[4] Y (i+1)-Y (i-1)	[2] * [3]	[1] * [4]	方向角	夾 角	距 離
22-50K	-149979.771	20.691	-41540.447	-11.938	-859513.388877	1790458.506198	270-42-20	90-01-40	12.182
22-33	-149979.621	-20.386	-41552.628	-12.431	847091.874408	1864396.668651	180-41-51	89-59-31	20.538
22-22	-150000.157	-20.691	-41552.878	11.938	859770.598698	-1790701.874266	90-43-43	90-01-52	12.189
22-49K	-150000.312	20.386	-41540.690	12.431	-846848.506340	-1864653.878472	0-40-40	89-56-57	20.542
合計				倍面積 面積	500.577889 250.28	-500.577889 250.28			65.451

面積 (座標法) 計算書

地番 = 22-13

測点名	[1] X (i)	[2] X (i+1)-X (i-1)	[3] Y (i)	[4] Y (i+1)-Y (i-1)	[2] * [3]	[1] * [4]	方向角	夾 角	距 離
22-23K	-149999.954	-20.734	-41568.578	15.444	861882.896252	-2316599.289576	90-44-27	90-01-35	15.701
22-22	-150000.157	20.333	-41552.878	15.950	-844894.668374	-2392502.504150	0-41-51	89-57-24	20.538
22-33	-149979.621	20.556	-41552.628	-1.589	-854155.821168	238317.617769	270-37-23	89-55-32	1.839
22-32	-149979.601	0.198	-41554.467	-15.694	-8227.784466	2353779.858094	270-44-10	180-06-47	13.856
22-31K	-149979.423	-20.353	-41568.322	-14.111	846040.057666	2116359.637953	180-42-52	89-58-42	20.533
合計				倍面積 面積	644.679910 322.33	-644.679910 322.33			72.467

面積 (座標法) 計算書

地番 = 22-14  
測点名

	[1] X (i)	[2] X (i+1)-X (i-1)	[3] Y (i)	[4] Y (i+1)-Y (i-1)	[2]*[3]	[1]*[4]	方向角	夾角	距離
22-31K	-149979.423	20.546	-41568.322	-0.903	-854062.743812	135431.418969	270-44-29	90-01-37	1.159
22-30	-149979.408	-20.516	-41569.481	-1.415	852839.472196	212220.862320	180-42-52	89-58-23	20.533
22-24	-149999.939	-20.546	-41569.737	0.903	854091.816402	-135449.944917	90-44-29	90-01-37	1.159
22-23K	-149999.954	20.516	-41568.578	1.415	-852820.946248	-212249.934910	0-42-52	89-58-23	20.533
合計				倍面積 面積	47.598538 23.79	-47.598538 23.79			43.384

面積 (座標法) 計算書

地番 = 22-15  
測点名

	[1] X (i)	[2] X (i+1)-X (i-1)	[3] Y (i)	[4] Y (i+1)-Y (i-1)	[2]*[3]	[1]*[4]	方向角	夾角	距離
22-28K	-149974.235	-4.506	-41583.244	-13.882	187374.097464	2081942.330270	180-41-10	89-58-54	4.676
22-46	-149978.911	-25.530	-41583.300	-0.325	1061621.649000	48743.146075	180-44-21	180-03-11	20.856
22-25	-149999.765	-21.028	-41583.569	13.563	874419.288932	-2034446.812695	90-43-15	89-58-54	13.833
22-24	-149999.939	20.357	-41569.737	14.088	-846235.136109	-2113199.140632	0-42-52	89-59-37	20.533
22-30	-149979.408	25.534	-41569.481	0.319	-1061435.127854	-47843.431152	0-43-17	180-00-25	5.003
22-29K	-149974.405	5.173	-41569.418	-13.763	-215038.599314	2064097.736015	270-42-16	89-58-59	13.827
合計				倍面積 面積	706.172119 353.08	-706.172119 353.08			78.728

面積 (座標法) 計算書

地番 = 22-16  
測点名

	[1] X (i)	[2] X (i+1)-X (i-1)	[3] Y (i)	[4] Y (i+1)-Y (i-1)	[2]*[3]	[1]*[4]	方向角	夾角	距離
22-45	-149978.666	-19.845	-41600.930	-17.244	825570.455850	2586232.116504	178-53-57	88-06-11	20.094
22-9	-149998.756	-20.892	-41600.544	1.176	869118.565248	-176398.537056	135-25-55	136-31-58	1.126
22-7	-149999.558	-1.009	-41599.754	16.975	41974.151786	-2546242.497050	90-43-58	135-18-03	16.186
22-25	-149999.765	20.647	-41583.569	16.454	-858575.949143	-2468096.133310	0-44-21	90-00-23	20.856
22-46	-149978.911	21.099	-41583.300	-17.361	-877366.046700	2603783.873871	270-47-46	90-03-25	17.632
合計				倍面積 面積	721.177041 360.58	-721.177041 360.58			75.894

面積 (座標法) 計算書

地番 = 22-17  
測点名

	[1] X (i)	[2] X (i+1)-X (i-1)	[3] Y (i)	[4] Y (i+1)-Y (i-1)	[2]*[3]	[1]*[4]	方向角	夾角	距離
22-41K	-150000.502	-15.113	-41525.937	7.740	627581.485881	-1161003.885480	90-45-04	90-01-06	7.933
22-18	-150000.606	14.910	-41518.005	8.125	-619033.454550	-1218754.923750	0-44-11	89-59-07	15.015
22-40	-149985.592	15.113	-41517.812	-7.740	-627458.692756	1160888.482080	270-42-54	89-58-43	7.934
22-42K	-149985.493	-14.910	-41525.745	-8.125	619148.857950	1218632.130625	180-43-58	90-01-04	15.010
合計				倍面積 面積	238.196525 119.09	-238.196525 119.09			45.892

面積 (座標法) 計算書

地番 = 22-18

測点名	[1] X (i)	[2] X (i+1)-X (i-1)	[3] Y (i)	[4] Y (i+1)-Y (i-1)	[2]*[3]	[1]*[4]	方向角	夾角	距離
22-42K	-149985.493	15.027	-41525.745	-1.207	-624007.370115	181032.490051	270-44-14	90-00-16	1.399
22-44	-149985.475	-14.991	-41527.144	-1.591	622533.415704	238626.890725	180-43-58	89-59-44	15.010
22-43	-150000.484	-15.027	-41527.336	1.207	624031.278072	-181050.584188	90-44-14	90-00-16	1.399
22-41K	-150000.502	14.991	-41525.937	1.591	-622515.321567	-238650.798682	0-43-58	89-59-44	15.010
合計				倍面積 面積	42.002094 21.00	-42.002094 21.00			32.818

面積 (座標法) 計算書

地番 = 22-19

測点名	[1] X (i)	[2] X (i+1)-X (i-1)	[3] Y (i)	[4] Y (i+1)-Y (i-1)	[2]*[3]	[1]*[4]	方向角	夾角	距離
22-49K	-150000.312	-20.553	-41540.690	0.731	853785.801570	-109650.228072	90-42-21	90-01-41	0.974
22-21	-150000.324	20.529	-41539.716	1.217	-852768.829764	-182550.394308	0-40-40	89-58-19	20.542
22-35	-149979.783	20.553	-41539.473	-0.731	-853760.788569	109635.221373	270-42-21	90-01-41	0.974
22-50K	-149979.771	-20.529	-41540.447	-1.217	852783.836463	182525.381307	180-40-40	89-58-19	20.542
合計				倍面積 面積	40.019700 20.00	-40.019700 20.00			43.032