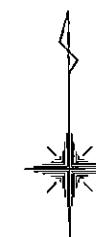
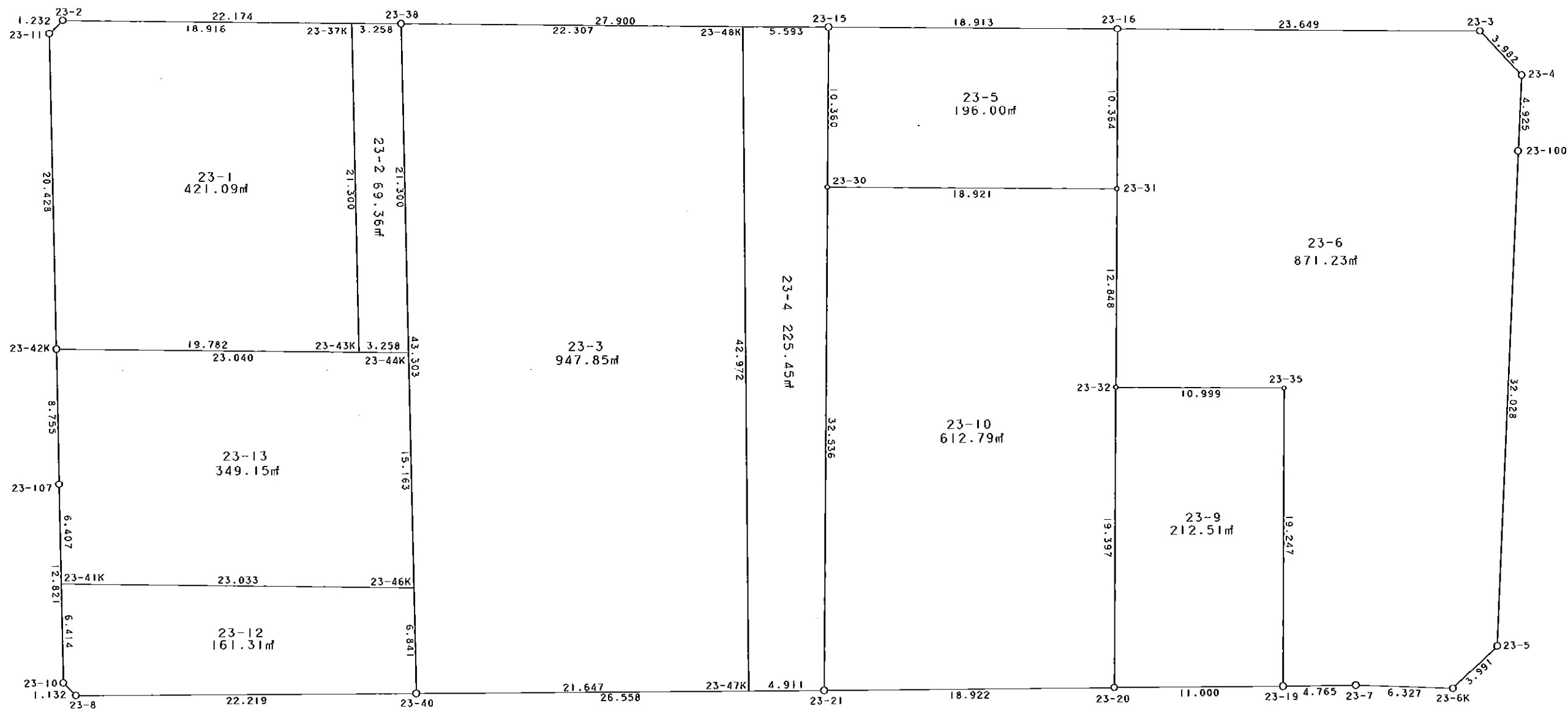


西部第5地区土地区画整理事業 出来形確認測量（原子図）

23街区



S = 1 / 300



凡 例

記号	名称
⊙	地区界点
○	街区点
○	画地点(折れ点)
┆	画地点(直線中)

地番	筆種別	面積	坪数
23-1	筆界	421.09	127.37
23-2	筆界	69.36	20.98
23-3	筆界	947.85	286.72
23-4	筆界	225.45	68.20
23-5	筆界	196.00	59.29
23-6	筆界	871.23	263.54
23-9	筆界	212.51	64.28
23-10	筆界	612.79	185.37
23-12	筆界	161.31	48.79
23-13	筆界計	349.15	105.61
	合	4066.74	1230.15

面積 (座標法) 計算書

地番 = 23-1  
測点名

	[1] X (i)	[2] X (i+1)-X (i-1)	[3] Y (i)	[4] Y (i+1)-Y (i-1)	[2] * [3]	[1] * [4]	方向角	夾角	距離
23-37K	-150005.801	21.544	-41580.603	-19.305	-895812.511032	2895861.988305	270-45-04	91-48-11	18.916
23-2	-150005.553	-0.612	-41599.517	-19.796	25458.904404	2969509.927188	225-43-25	134-58-21	1.232
23-11	-150006.413	-21.284	-41600.399	-0.475	885422.892316	71253.046175	178-51-30	133-08-05	20.428
23-42K	-150026.837	-20.684	-41599.992	20.187	860454.234528	-3028591.758519	90-45-11	91-53-41	19.782
23-43K	-150027.097	21.036	-41580.212	19.389	-874681.339632	-2908875.383733	358-56-53	88-11-42	21.300
合計				倍面積 面積	842.180584 421.09	-842.180584 421.09			81.658

面積 (座標法) 計算書

地番 = 23-2  
測点名

	[1] X (i)	[2] X (i+1)-X (i-1)	[3] Y (i)	[4] Y (i+1)-Y (i-1)	[2] * [3]	[1] * [4]	方向角	夾角	距離
23-43K	-150027.097	-21.339	-41580.212	3.649	887280.143868	-547448.876953	90-45-22	91-48-29	3.258
23-44K	-150027.140	21.253	-41576.954	2.867	-883635.003362	-430127.810380	358-56-53	88-11-31	21.300
23-38	-150005.844	21.339	-41577.345	-3.649	-887218.964955	547371.324756	270-45-22	91-48-29	3.258
23-37K	-150005.801	-21.253	-41580.603	-2.867	883712.555559	430066.631467	178-56-53	88-11-31	21.300
合計				倍面積 面積	138.731110 69.36	-138.731110 69.36			49.116

面積 (座標法) 計算書

地番 = 23-3  
測点名

	[1] X (i)	[2] X (i+1)-X (i-1)	[3] Y (i)	[4] Y (i+1)-Y (i-1)	[2] * [3]	[1] * [4]	方向角	夾角	距離
23-38	-150005.844	-43.015	-41577.345	-21.510	1788449.495175	3226625.704440	178-56-53	88-13-35	43.303
23-40	-150049.140	-43.253	-41576.550	22.442	1798310.517150	-3367402.799880	89-53-10	90-56-17	21.647
23-47K	-150049.097	43.015	-41554.903	21.510	-1787484.152545	-3227556.076470	359-49-02	89-55-52	42.972
23-48K	-150006.125	43.253	-41555.040	-22.442	-1797380.145120	3366437.457250	270-43-18	90-54-16	22.307
合計				倍面積 面積	1895.714660 947.85	-1895.714660 947.85			130.229

面積 (座標法) 計算書

地番 = 23-4  
測点名

	[1] X (i)	[2] X (i+1)-X (i-1)	[3] Y (i)	[4] Y (i+1)-Y (i-1)	[2] * [3]	[1] * [4]	方向角	夾角	距離
23-48K	-150006.125	-42.902	-41555.040	-5.456	1782794.326080	818433.418000	179-49-02	89-06-01	42.972
23-47K	-150049.097	-42.962	-41554.903	5.048	1785281.742686	-757447.841656	89-53-00	90-03-58	4.911
23-21	-150049.087	32.543	-41549.992	5.323	-1352161.389656	-798711.290101	0-43-32	90-50-32	32.536
23-30	-150016.554	42.892	-41549.580	0.545	-1782144.585360	-81759.021930	0-44-08	180-00-36	10.360
23-15	-150006.195	10.429	-41549.447	-5.460	-433319.182763	819033.824700	270-43-01	89-58-53	5.593
合計				倍面積 面積	450.910987 225.45	-450.910987 225.45			96.372

面積 (座標法) 計算書

地番 = 23-5  
測点名

	[1] X (i)	[2] X (i+1)-X (i-1)	[3] Y (i)	[4] Y (i+1)-Y (i-1)	[2] * [3]	[1] * [4]	方向角	夾角	距離
23-15	-150006.195	-10.117	-41549.447	-19.044	420355.755299	2856717.977580	180-44-08	90-00-09	10.360
23-30	-150016.554	-10.605	-41549.580	18.786	440633.295900	-2818210.983444	90-44-42	90-00-34	18.921
23-31	-150016.800	10.117	-41530.661	19.044	-420165.697337	-2856919.939200	0-41-28	89-56-46	10.364
23-16	-150006.437	10.605	-41530.536	-18.786	-440431.334280	2818020.925482	270-43-59	90-02-31	18.913
合計				倍面積 面積	392.019582 196.00	-392.019582 196.00			58.558

面積 (座標法) 計算書

地番 = 23-6  
測点名

	[1] X (i)	[2] X (i+1)-X (i-1)	[3] Y (i)	[4] Y (i+1)-Y (i-1)	[2] * [3]	[1] * [4]	方向角	夾角	距離
23-16	-150006.437	-10.056	-41530.536	-23.772	417631.070016	3565953.020364	180-41-28	89-56-50	10.364
23-31	-150016.800	-23.210	-41530.661	-0.290	963926.641810	43504.872000	180-44-09	180-02-41	12.848
23-32	-150029.647	-12.982	-41530.826	10.833	539153.183132	-1625271.165951	90-42-12	89-58-03	10.999
23-35	-150029.782	-19.380	-41519.828	10.756	804654.266640	-1613720.335192	180-43-14	270-01-02	19.247
23-19	-150049.027	-19.231	-41520.070	4.523	798472.466170	-678671.749121	89-49-54	89-06-40	4.765
23-7	-150049.013	-0.234	-41515.305	11.087	9714.581370	-1663593.407131	92-14-47	182-24-53	6.327
23-6K	-150049.261	2.464	-41508.983	9.250	-102278.134112	-1387955.664250	47-11-36	134-56-49	3.991
23-5	-150046.549	34.699	-41506.055	4.556	-1440218.602445	-683612.077244	2-54-49	135-43-13	32.028
23-100	-150014.562	36.905	-41504.427	1.895	-1531720.878435	-284277.594990	3-06-27	180-11-38	4.925
23-4	-150009.644	7.818	-41504.160	-2.462	-324479.522880	369323.743528	316-44-24	133-37-57	3.982
23-3	-150006.744	3.207	-41506.889	-26.376	-133112.593023	3956577.879744	270-44-38	134-00-14	23.649
合計				倍面積 面積	1742.478243 871.23	-1742.478243 871.23			133.125

面積 (座標法) 計算書

地番 = 23-9  
測点名

	[1] X (i)	[2] X (i+1)-X (i-1)	[3] Y (i)	[4] Y (i+1)-Y (i-1)	[2] * [3]	[1] * [4]	方向角	夾角	距離
23-32	-150029.647	-19.260	-41530.826	-11.242	799883.708760	1686633.291574	180-43-15	90-01-03	19.397
23-20	-150049.042	-19.380	-41531.070	10.756	804872.136600	-1613927.495752	89-55-19	89-12-04	11.000
23-19	-150049.027	19.260	-41520.070	11.242	-799676.548200	-1686851.161534	0-43-14	90-47-55	19.247
23-35	-150029.782	19.380	-41519.828	-10.756	-804654.266640	1613720.335192	270-42-12	89-58-58	10.999
合計				倍面積 面積	425.030520 212.51	-425.030520 212.51			60.643

面積 (座標法) 計算書

地番 = 23-10

測点名	[1] X (i)	[2] X (i+1)-X (i-1)	[3] Y (i)	[4] Y (i+1)-Y (i-1)	[2] * [3]	[1] * [4]	方向角	夾 角	距 離
23-30	-150016.554	-32.287	-41549.580	-19.331	1341511.289460	2899970.005374	180-43-32	89-58-50	32.536
23-21	-150049.087	-32.488	-41549.992	18.510	1349876.140096	-2777408.600370	89-51-49	89-08-17	18.922
23-20	-150049.042	19.440	-41531.070	19.166	-807364.000800	-2875839.938972	0-43-15	90-51-26	19.397
23-32	-150029.647	32.242	-41530.826	0.409	-1339036.891892	-61362.125623	0-44-09	180-00-54	12.848
23-31	-150016.800	13.093	-41530.661	-18.754	-543760.944473	2813415.067200	270-44-42	90-00-33	18.921
合計					1225.592391	-1225.592391			102.624
				倍面積 面積	612.79	612.79			

面積 (座標法) 計算書

地番 = 23-12

測点名	[1] X (i)	[2] X (i+1)-X (i-1)	[3] Y (i)	[4] Y (i+1)-Y (i-1)	[2] * [3]	[1] * [4]	方向角	夾 角	距 離
23-41K	-150041.997	-6.110	-41599.707	-22.906	254174.209770	3436861.983282	178-53-00	88-07-46	6.414
23-10	-150048.410	-7.200	-41599.582	0.938	299516.990400	-140745.408580	134-04-08	135-11-08	1.132
23-8	-150049.197	-0.730	-41598.769	23.032	30367.101370	-3455933.105304	89-51-11	135-47-03	22.219
23-40	-150049.140	6.897	-41576.550	22.093	-286753.465350	-3315035.650020	358-56-41	89-05-30	6.841
23-46K	-150042.300	7.143	-41576.676	-23.157	-296982.196668	3474529.541100	270-45-14	91-48-33	23.033
合計					322.639522	-322.639522			59.639
				倍面積 面積	161.31	161.31			

面積 (座標法) 計算書

地番 = 23-13

測点名	[1] X (i)	[2] X (i+1)-X (i-1)	[3] Y (i)	[4] Y (i+1)-Y (i-1)	[2] * [3]	[1] * [4]	方向角	夾 角	距 離
23-46K	-150042.300	14.857	-41576.676	22.753	-617704.675332	-3413912.451900	358-56-58	88-11-44	15.163
23-44K	-150027.140	15.463	-41576.954	-23.316	-642904.439702	3498032.796240	270-45-13	91-48-15	23.040
23-42K	-150026.837	-8.451	-41599.992	-22.878	351561.532392	3432313.976886	178-57-10	88-11-57	8.755
23-107	-150035.591	-15.160	-41599.832	0.285	630653.453120	-42760.143435	178-52-56	179-55-46	6.407
23-41K	-150041.997	-6.709	-41599.707	23.156	279092.434263	-3474372.482532	90-45-14	91-52-18	23.033
合計					698.304741	-698.304741			76.398
				倍面積 面積	349.15	349.15			