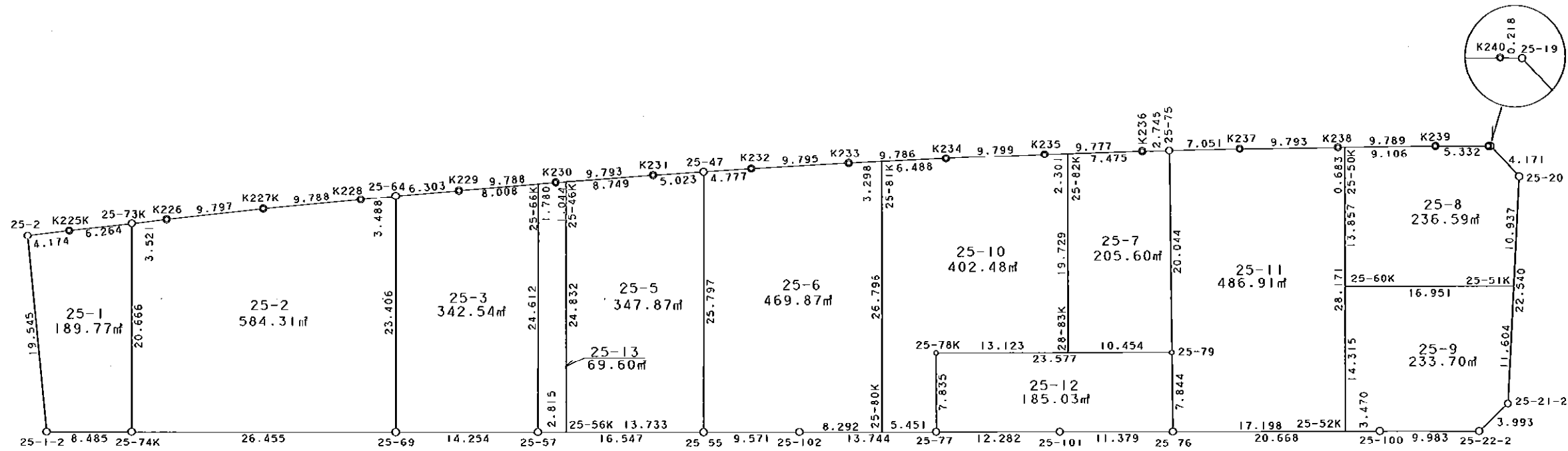


25街区



S = 1 / 500



凡 例

記号	名称
⊙	地区界点
○	街区点
○	画地点 (折れ点)
┌	画地点 (直線中)

地番	筆種別	面積	坪数
25-1	筆界	189.77	57.40
25-2	筆界	584.31	176.75
25-3	筆界	342.54	103.62
25-5	筆界	347.87	105.23
25-6	筆界	469.87	142.13
25-7	筆界	205.60	62.19
25-8	筆界	236.59	71.57
25-9	筆界	233.70	70.69
25-10	筆界	402.48	121.75
25-11	筆界	486.91	147.29
25-12	筆界	185.03	55.97
25-13	筆界	69.60	21.05
	筆合	3754.27	1135.64

面積 (座標法) 計算書

地番 = 25-1  
測点名

	[1] X (i)	[2] X (i+1)-X (i-1)	[3] Y (i)	[4] Y (i+1)-Y (i-1)	[2]*[3]	[1]*[4]	方向角	夾角	距離
25-73K	-149914.841	5.762	-41419.875	20.092	-238661.319750	-3012088.985372	354-47-17	83-28-06	6.264
K225K	-149908.603	10.391	-41420.444	-0.987	-430399.833604	147959.791161	354-15-09	179-27-52	4.174
25-2	-149904.450	2.721	-41420.862	-19.910	-112706.165502	2984597.599500	265-47-54	91-32-45	19.545
25-1-2	-149905.882	-9.915	-41440.354	-19.674	410881.109910	2949248.322468	181-13-45	95-25-51	8.485
25-74K	-149914.365	-8.959	-41440.536	20.479	371265.762024	-3070096.280835	91-19-11	90-05-26	20.666
合計				倍面積 面積	379.553078 189.77	-379.553078 189.77			59.134

面積 (座標法) 計算書

地番 = 25-2  
測点名

	[1] X (i)	[2] X (i+1)-X (i-1)	[3] Y (i)	[4] Y (i+1)-Y (i-1)	[2]*[3]	[1]*[4]	方向角	夾角	距離
25-74K	-149914.365	-25.972	-41440.536	-21.265	1076293.600992	3187928.971725	181-18-30	89-59-19	26.455
25-69	-149940.813	-26.983	-41441.140	22.796	1118206.280620	-3418050.773148	91-18-35	90-00-05	23.406
25-64	-149941.348	2.944	-41417.740	23.154	-121933.826560	-3471741.971592	355-57-19	84-38-44	3.488
K228	-149937.869	13.240	-41417.986	-0.973	-548374.134640	145889.546537	355-44-26	179-47-07	9.788
K227K	-149928.108	19.522	-41418.713	-1.569	-808576.115186	235237.201452	355-04-11	179-19-45	9.797
K226	-149918.347	13.267	-41419.555	-1.162	-549513.236185	174205.119214	354-47-06	179-42-55	3.521
25-73K	-149914.841	3.982	-41419.875	-20.981	-164933.942250	3145363.279021	271-19-11	96-32-05	20.666
合計				倍面積 面積	1168.626791 584.31	-1168.626791 584.31			97.121

面積 (座標法) 計算書

地番 = 25-3  
測点名

	[1] X (i)	[2] X (i+1)-X (i-1)	[3] Y (i)	[4] Y (i+1)-Y (i-1)	[2]*[3]	[1]*[4]	方向角	夾角	距離
25-69	-149940.813	-13.716	-41441.140	-23.712	568406.676240	3555396.557856	181-15-15	89-56-40	14.254
25-57	-149955.064	-14.818	-41441.452	24.293	614079.435736	-3642858.369752	91-19-12	90-03-57	24.612
25-66K	-149955.631	7.428	-41416.847	24.142	-307644.339516	-3620228.843602	356-41-08	85-21-56	8.008
K229	-149947.636	14.283	-41417.310	-0.893	-591563.438730	133903.238948	356-05-17	179-24-09	6.303
25-64	-149941.348	6.823	-41417.740	-23.830	-282593.240020	3573102.322840	271-18-35	95-13-18	23.406
合計				倍面積 面積	685.093710 342.54	-685.093710 342.54			76.583

面積 (座標法) 計算書

地番 = 25-5  
測点名

	[1] X (i)	[2] X (i+1)-X (i-1)	[3] Y (i)	[4] Y (i+1)-Y (i-1)	[2]*[3]	[1]*[4]	方向角	夾角	距離
25-56K	-149957.878	-13.156	-41441.517	-25.145	545204.597652	3770690.842310	181-20-07	90-00-47	13.733
25-55	-149971.607	-14.330	-41441.837	25.470	593861.524210	-3819776.830290	91-20-06	89-59-59	25.797
25-47	-149972.208	4.418	-41416.047	25.580	-182976.095646	-3836289.080640	357-36-15	86-16-09	5.023
K231	-149967.189	13.757	-41416.257	-0.645	-569763.447549	96728.836905	357-09-00	179-32-45	8.749
25-46K	-149958.451	9.311	-41416.692	-25.260	-385630.819212	3787950.472260	271-19-20	94-10-20	24.832
合計				倍面積 面積	695.759455 347.87	-695.759455 347.87			78.134

面積 (座標法) 計算書

地番 = 25-6  
測点名

	[1] X (i)	[2] X (i+1)-X (i-1)	[3] Y (i)	[4] Y (i+1)-Y (i-1)	[2] * [3]	[1] * [4]	方向角	夾角	距離
25-81K	-149990.068	2.695	-41415.437	26.704	-111614.602715	-4005334.775872	358-31-23	87-14-09	3.298
K233	-149986.771	13.087	-41415.522	-0.405	-542004.936414	60744.642255	358-07-40	179-36-17	9.795
K232	-149976.981	14.563	-41415.842	-0.525	-603138.907046	78737.915025	357-32-26	179-24-46	4.777
25-47	-149972.208	5.374	-41416.047	-25.995	-222569.836578	3898527.546960	271-20-06	93-47-40	25.797
25-55	-149971.607	-8.968	-41441.837	-25.991	371650.394216	3897912.037537	181-12-12	89-52-06	9.571
25-102	-149981.176	-17.859	-41442.038	-0.389	740113.356642	58342.677464	181-17-57	180-05-45	8.292
25-80K	-149989.466	-8.892	-41442.226	26.601	368504.273592	-3989869.785066	91-17-14	89-59-17	26.796
合計				倍面積 面積	939.741697 469.87	-939.741697 469.87			88.326

面積 (座標法) 計算書

地番 = 25-7  
測点名

	[1] X (i)	[2] X (i+1)-X (i-1)	[3] Y (i)	[4] Y (i+1)-Y (i-1)	[2] * [3]	[1] * [4]	方向角	夾角	距離
28-83K	-150008.210	-10.008	-41434.808	-19.955	414679.558464	2993413.830550	181-15-58	89-58-46	10.454
25-79	-150018.661	-10.663	-41435.039	19.812	441821.820857	-2972169.711732	90-36-22	89-20-24	20.044
25-75	-150018.873	2.533	-41414.996	20.035	-104904.184868	-3005628.120555	359-49-59	89-13-37	2.745
K236	-150016.128	10.220	-41415.004	-0.088	-423261.340880	13201.419264	359-23-13	179-33-14	7.475
25-82K	-150008.653	7.918	-41415.084	-19.804	-327924.635112	2970771.364012	271-17-12	91-53-59	19.729
合計				倍面積 面積	411.218461 205.60	-411.218461 205.60			60.447

面積 (座標法) 計算書

地番 = 25-8  
測点名

	[1] X (i)	[2] X (i+1)-X (i-1)	[3] Y (i)	[4] Y (i+1)-Y (i-1)	[2] * [3]	[1] * [4]	方向角	夾角	距離
25-51K	-150053.035	-17.753	-41429.327	10.524	735494.842231	-1579158.140340	94-13-35	92-55-54	10.937
25-20	-150053.841	1.981	-41418.420	14.010	-82049.890020	-2102254.312410	48-04-16	133-50-41	4.171
25-19	-150051.054	3.005	-41415.317	3.114	-124453.027585	-467258.982156	2-53-19	134-49-03	0.218
K240	-150050.836	5.549	-41415.306	0.121	-229813.532994	-18156.151156	1-10-55	178-17-36	5.332
K239	-150045.505	14.436	-41415.196	0.215	-597869.769456	-32259.783575	0-39-39	179-28-44	9.106
25-50K	-150036.400	9.417	-41415.091	-13.748	-390005.911947	2062700.427200	271-17-25	90-37-46	13.857
25-60K	-150036.088	-16.635	-41428.944	-14.236	689170.483440	2135913.748768	181-17-41	90-00-16	16.951
合計				倍面積 面積	473.193669 236.59	-473.193669 236.59			60.572

面積 (座標法) 計算書

地番 = 25-9  
測点名

	[1] X (i)	[2] X (i+1)-X (i-1)	[3] Y (i)	[4] Y (i+1)-Y (i-1)	[2]*[3]	[1]*[4]	方向角	夾角	距離
25-60K	-150036.088	17.270	-41428.944	-13.928	-715477.862880	2089702.633664	271-17-35	89-59-54	14.315
25-52K	-150035.765	-3.146	-41443.255	-14.386	130380.480230	2158414.515290	181-14-19	89-56-44	3.470
25-100	-150039.234	-13.449	-41443.330	-0.318	557371.345170	47712.476412	181-23-41	180-09-22	9.983
25-22-2	-150049.214	-12.946	-41443.573	2.431	536528.496058	-364769.639234	137-57-49	136-34-08	3.993
25-21-2	-150052.180	-3.821	-41440.899	14.246	158345.675079	-2137643.356280	94-13-32	136-15-43	11.604
25-51K	-150053.035	16.092	-41429.327	11.955	-666680.730084	-1793884.033425	1-17-41	87-04-09	16.951
合計				倍面積 面積	467.403573 233.70	-467.403573 233.70			60.316

面積 (座標法) 計算書

地番 = 25-10  
測点名

	[1] X (i)	[2] X (i+1)-X (i-1)	[3] Y (i)	[4] Y (i+1)-Y (i-1)	[2]*[3]	[1]*[4]	方向角	夾角	距離
25-82K	-150008.653	1.858	-41415.084	19.700	-76949.226072	-2955170.464100	359-24-09	88-06-57	2.301
K235	-150006.352	12.099	-41415.108	-0.186	-501081.391692	27901.181472	359-03-10	179-39-01	9.799
K234	-149996.554	16.284	-41415.270	-0.329	-674406.256680	49348.866266	358-31-30	179-28-20	6.488
25-81K	-149990.068	7.088	-41415.437	-26.956	-293552.617456	4043132.273008	271-17-14	92-45-44	26.796
25-80K	-149989.466	-4.848	-41442.226	-26.913	200911.911648	4036666.498458	181-18-12	90-00-58	5.451
25-77	-149994.916	-5.624	-41442.350	7.709	233071.776400	-1156310.807444	91-16-21	89-58-09	7.835
25-78K	-149995.090	-13.294	-41434.517	7.542	550830.468998	-1131262.968780	181-16-14	269-59-53	13.123
28-83K	-150008.210	-13.563	-41434.808	19.433	561980.300904	-2915109.544930	91-17-12	90-00-58	19.729
合計				倍面積 面積	804.966050 402.48	-804.966050 402.48			91.522

面積 (座標法) 計算書

地番 = 25-11  
測点名

	[1] X (i)	[2] X (i+1)-X (i-1)	[3] Y (i)	[4] Y (i+1)-Y (i-1)	[2]*[3]	[1]*[4]	方向角	夾角	距離
25-50K	-150036.400	0.048	-41415.091	28.172	-1987.924368	-4226825.460800	0-40-16	89-22-46	0.683
K238	-150035.717	10.476	-41415.083	0.096	-433864.409508	-14403.428832	0-30-53	179-50-37	9.793
K237	-150025.924	16.844	-41414.995	0.087	-697594.175780	-13052.255388	359-59-31	179-28-38	7.051
25-75	-150018.873	7.263	-41414.996	-20.044	-300797.115948	3006978.290412	270-36-22	90-36-51	20.044
25-79	-150018.661	0.302	-41435.039	-27.886	-12513.381778	4183420.380646	270-39-27	180-03-05	7.844
25-76	-150018.571	-17.104	-41442.882	-8.216	708839.053728	1232552.579336	181-14-34	90-35-07	17.198
25-52K	-150035.765	-17.829	-41443.255	27.791	738891.793395	-4169643.945115	91-17-30	90-02-56	28.171
合計				倍面積 面積	973.839741 486.91	-973.839741 486.91			90.784

### 面積 (座標法) 計算書

地番 = 25-12

測点名	[1] X (i)	[2] X (i+1)-X (i-1)	[3] Y (i)	[4] Y (i+1)-Y (i-1)	[2]*[3]	[1]*[4]	方向角	夾角	距離
25-77	-149994.916	-12.105	-41442.350	-8.100	501659.646750	1214958.819600	181-14-44	89-58-23	12.282
25-101	-150007.195	-23.655	-41442.617	-0.532	980325.105135	79803.827740	181-20-04	180-05-20	11.379
25-76	-150018.571	-11.466	-41442.882	7.578	475184.085012	-1136840.731038	90-39-27	89-19-23	7.844
25-79	-150018.661	23.481	-41435.039	8.365	-972936.150759	-1254906.099265	1-16-07	90-36-40	23.577
25-78K	-149995.090	23.745	-41434.517	-7.311	-983862.606165	1096614.102990	271-16-21	90-00-14	7.835
合計				倍面積 面積	370.079973 185.03	-370.079973 185.03			62.917

### 面積 (座標法) 計算書

地番 = 25-13

測点名	[1] X (i)	[2] X (i+1)-X (i-1)	[3] Y (i)	[4] Y (i+1)-Y (i-1)	[2]*[3]	[1]*[4]	方向角	夾角	距離
25-46K	-149958.451	0.470	-41416.692	24.773	-19465.845240	-3714920.706623	357-08-45	85-49-25	1.044
K230	-149957.408	2.820	-41416.744	-0.155	-116795.218080	23243.398240	356-40-58	179-32-13	1.780
25-66K	-149955.631	2.344	-41416.847	-24.708	-97081.089368	3705103.730748	271-19-12	94-38-14	24.612
25-57	-149955.064	-2.247	-41441.452	-24.670	93118.942644	3699391.428880	181-19-24	90-00-12	2.815
25-56K	-149957.878	-3.387	-41441.517	24.760	140362.418079	-3712957.059280	91-19-20	89-59-56	24.832
合計				倍面積 面積	139.208035 69.60	-139.208035 69.60			55.083