

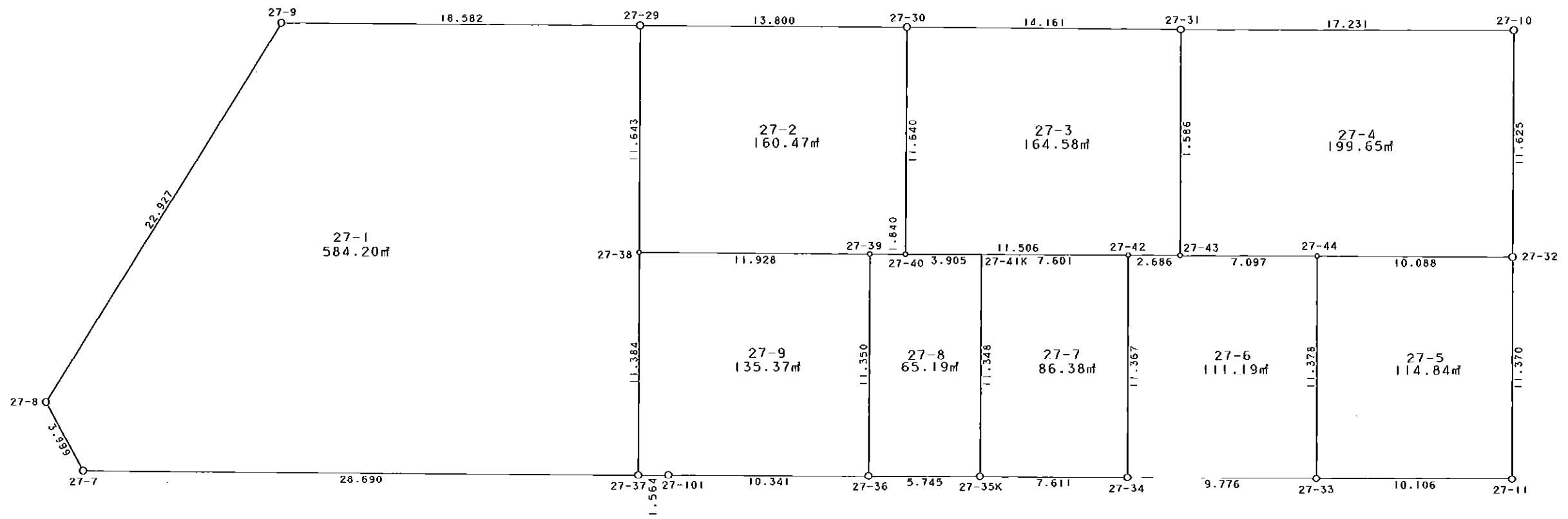
西部第5地区土地区画整理事業

出来形確認測量 (原子図)

27街区



S = 1 / 250



凡 例

記号	名称
—○—	地区界点
—○—	街区点
—○—	画地点 (折れ点)
—┼—	画地点 (直線中)

地番	筆種別	面積	坪数
27-1	筆界	584.20	176.72
27-2	筆界	160.47	48.54
27-3	筆界	164.58	49.78
27-4	筆界	199.65	60.39
27-5	筆界	114.84	34.74
27-6	筆界	111.19	33.63
27-7	筆界	86.38	26.13
27-8	筆界	65.19	19.72
27-9	筆界計	135.37	40.95
	合	1621.87	490.60

面積 (座標法) 計算書

地番 = 27-1  
測点名

	[1] X (i)	[2] X (i+1)-X (i-1)	[3] Y (i)	[4] Y (i+1)-Y (i-1)	[2] * [3]	[1] * [4]	方向角	夾角	距離
27-9	-150062.268	-18.079	-41860.366	-31.476	756793.556914	4723359.947568	214-16-55	121-36-50	22.927
27-8	-150081.212	-22.522	-41873.280	-11.127	943070.012160	1669953.645924	153-27-38	119-10-43	3.999
27-7	-150084.790	-4.925	-41871.493	30.445	206217.103025	-4569331.431550	92-41-28	119-13-50	28.690
27-37	-150086.137	10.026	-41842.835	29.169	-419516.263710	-4377862.530153	2-34-21	89-52-53	11.384
27-38	-150074.764	23.004	-41842.324	1.031	-962540.821296	-154727.081684	2-33-36	179-59-15	11.643
27-29	-150063.133	12.496	-41841.804	-18.042	-522855.182784	2707439.045586	272-40-05	90-06-29	18.582
合計				倍面積 面積	1168.404309 584.20	-1168.404309 584.20			97.225

面積 (座標法) 計算書

地番 = 27-2  
測点名

	[1] X (i)	[2] X (i+1)-X (i-1)	[3] Y (i)	[4] Y (i+1)-Y (i-1)	[2] * [3]	[1] * [4]	方向角	夾角	距離
27-29	-150063.133	-10.976	-41841.804	-14.304	459255.640704	2146503.054432	182-33-36	89-50-22	11.643
27-38	-150074.764	-12.197	-41842.324	11.395	510350.825828	-1710101.935780	92-43-11	90-09-35	11.928
27-39	-150075.330	-0.651	-41830.409	13.753	27231.596259	-2063986.013490	92-38-52	179-55-41	1.840
27-40	-150075.415	11.542	-41828.571	2.389	-482785.366482	-358530.166435	2-42-48	90-03-56	11.640
27-30	-150063.788	12.282	-41828.020	-13.233	-513731.741640	1985794.106604	272-43-14	90-00-26	13.800
合計				倍面積 面積	320.954669 160.47	-320.954669 160.47			50.851

面積 (座標法) 計算書

地番 = 27-3  
測点名

	[1] X (i)	[2] X (i+1)-X (i-1)	[3] Y (i)	[4] Y (i+1)-Y (i-1)	[2] * [3]	[1] * [4]	方向角	夾角	距離
27-30	-150063.788	-10.916	-41828.020	-14.694	456594.666320	2205037.300872	182-42-48	89-50-07	11.640
27-40	-150075.415	-12.154	-41828.571	10.943	508384.451934	-1642275.266345	92-37-31	89-54-43	11.506
27-42	-150075.942	-0.658	-41817.077	14.177	27515.636666	-2127626.629734	92-47-43	180-10-12	2.686
27-43	-150076.073	11.443	-41814.394	3.200	-478482.110542	-480243.433600	2-33-28	89-45-45	11.586
27-31	-150064.499	12.285	-41813.877	-13.626	-513683.478945	2044778.863374	272-52-41	90-19-13	14.161
合計				倍面積 面積	329.165433 164.58	-329.165433 164.58			51.579

面積 (座標法) 計算書

地番 = 27-4  
測点名

	[1] X (i)	[2] X (i+1)-X (i-1)	[3] Y (i)	[4] Y (i+1)-Y (i-1)	[2] * [3]	[1] * [4]	方向角	夾角	距離
27-31	-150064.499	-10.809	-41813.877	-17.731	451966.196493	2660793.631769	182-33-28	90-00-48	11.586
27-43	-150076.073	-11.900	-41814.394	6.573	497591.288600	-986450.027829	92-37-57	90-04-29	7.097
27-44	-150076.399	-0.802	-41807.304	17.167	33529.457808	-2576361.541633	92-42-16	180-04-19	10.088
27-32	-150076.875	11.135	-41797.227	10.641	-465412.122645	-1596968.026875	2-46-51	90-04-35	11.625
27-10	-150065.264	12.376	-41796.663	-16.650	-517275.501288	2498586.645600	272-32-40	89-45-49	17.231
合計				倍面積 面積	399.318968 199.65	-399.318968 199.65			57.627

面積 (座標法) 計算書

地番 = 27-5  
測点名

	[1] X (i)	[2] X (i+1)-X (i-1)	[3] Y (i)	[4] Y (i+1)-Y (i-1)	[2] * [3]	[1] * [4]	方向角	夾角	距離
27-44	-150076.399	-10.890	-41807.304	-10.609	455281.540560	1592160.516991	182-40-47	89-58-31	11.378
27-33	-150087.765	-11.834	-41807.836	9.563	494753.931224	-1435289.296695	92-39-16	89-58-29	10.106
27-11	-150088.233	10.890	-41797.741	10.609	-455177.399490	-1592286.063897	2-35-28	89-56-12	11.370
27-32	-150076.875	11.834	-41797.227	-9.563	-494628.384318	1435185.155625	272-42-16	90-06-48	10.088
合計				倍面積 面積	229.687976 114.84	-229.687976 114.84			42.942

面積 (座標法) 計算書

地番 = 27-6  
測点名

	[1] X (i)	[2] X (i+1)-X (i-1)	[3] Y (i)	[4] Y (i+1)-Y (i-1)	[2] * [3]	[1] * [4]	方向角	夾角	距離
27-42	-150075.942	-11.224	-41817.077	-3.207	469354.872248	481293.545994	182-38-32	89-50-49	11.367
27-34	-150087.297	-11.823	-41817.601	9.241	494409.496623	-1386956.711577	92-44-38	90-06-06	9.776
27-33	-150087.765	10.898	-41807.836	10.297	-455621.796728	-1545453.716205	2-40-47	89-56-09	11.378
27-44	-150076.399	11.692	-41807.304	-6.558	-488810.998368	984201.024642	272-37-57	89-57-10	7.097
27-43	-150076.073	0.457	-41814.394	-9.773	-19109.178058	1466693.461429	272-47-43	180-09-46	2.686
合計				倍面積 面積	222.395717 111.19	-222.395717 111.19			42.304

面積 (座標法) 計算書

地番 = 27-7  
測点名

	[1] X (i)	[2] X (i+1)-X (i-1)	[3] Y (i)	[4] Y (i+1)-Y (i-1)	[2] * [3]	[1] * [4]	方向角	夾角	距離
27-35K	-150086.929	-11.703	-41825.203	7.069	489480.350709	-1060964.501101	92-46-17	90-04-45	7.611
27-34	-150087.297	10.987	-41817.601	8.126	-459449.982187	-1219609.375422	2-38-32	89-52-15	11.367
27-42	-150075.942	11.703	-41817.077	-7.069	-489385.252131	1060886.833998	272-37-27	89-58-55	7.601
27-41K	-150075.594	-10.987	-41824.670	-8.126	459527.649290	1219514.276844	182-41-32	90-04-05	11.348
合計				倍面積 面積	172.765681 86.38	-172.765681 86.38			37.927

面積 (座標法) 計算書

地番 = 27-8  
測点名

	[1] X (i)	[2] X (i+1)-X (i-1)	[3] Y (i)	[4] Y (i+1)-Y (i-1)	[2] * [3]	[1] * [4]	方向角	夾角	距離
27-41K	-150075.594	11.514	-41824.670	-3.368	-481569.250380	505454.600592	272-37-38	89-56-06	3.905
27-40	-150075.415	0.264	-41828.571	-5.739	-11042.742744	861282.806685	272-38-52	180-01-14	1.840
27-39	-150075.330	-11.252	-41830.409	-2.371	470675.762068	355828.607430	182-41-30	90-02-38	11.350
27-36	-150086.667	-11.599	-41830.942	5.206	485197.096258	-781351.188402	92-36-50	89-55-20	5.745
27-35K	-150086.929	11.073	-41825.203	6.272	-463130.472819	-941345.218688	2-41-32	90-04-42	11.348
合計				倍面積 面積	130.392383 65.19	-130.392383 65.19			34.188

### 面積 (座標法) 計算書

地番 = 27-9  
測点名

	[1] X (i)	[2] X (i+1) - X (i-1)	[3] Y (i)	[4] Y (i+1) - Y (i-1)	[2] * [3]	[1] * [4]	方向角	夾 角	距 離
27-38	-150074.764	-10.807	-41842.324	-12.426	452189.995468	1864829.017464	182-34-21	89-51-10	11.384
27-37	-150086.137	-11.429	-41842.835	1.052	478221.761215	-157890.616124	92-03-07	89-28-46	1.564
27-101	-150086.193	-0.530	-41841.272	11.893	22175.874160	-1784975.093349	92-37-38	180-34-31	10.341
27-36	-150086.667	10.863	-41830.942	10.863	-454409.522946	-1630391.463621	2-41-30	90-03-52	11.350
27-39	-150075.330	11.903	-41830.409	-11.382	-497907.358327	1708157.406060	272-43-11	90-01-41	11.928
合計					270.749570	-270.749570			46.567
				倍面積 面積	135.37	135.37			