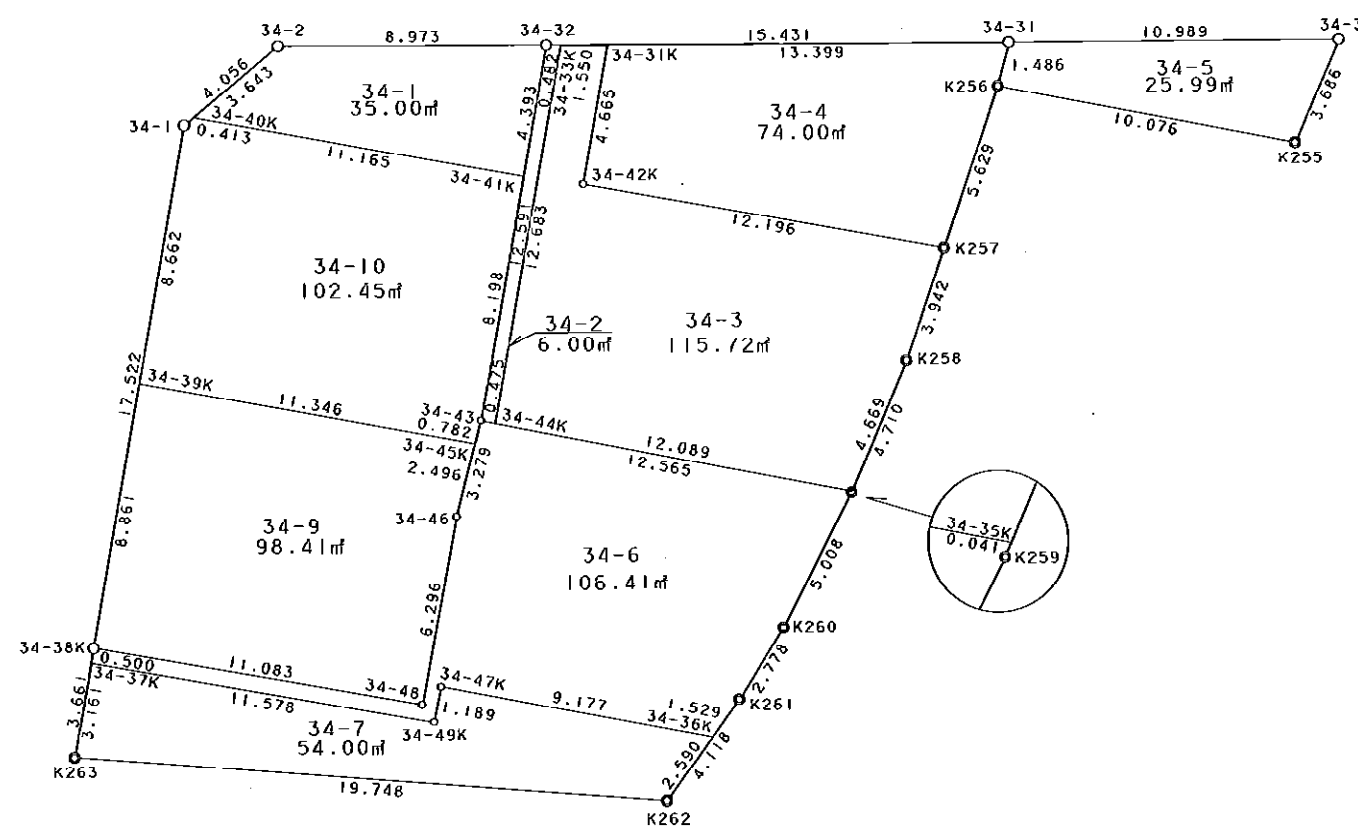


34街区



S = 1 / 250



凡 例

記号	名称
⊙	地区界点
○	街区点
○	画地点 (折れ点)
└	画地点 (直線中)

地番	筆種別	面積	坪数
34-1	筆界	35.00	10.58
34-2	筆界	6.00	1.81
34-3	筆界	115.72	35.00
34-4	筆界	74.00	22.38
34-5	筆界	25.99	7.86
34-6	筆界	106.41	32.19
34-7	筆界	54.00	16.33
34-9	筆界	98.41	29.76
34-10	筆界計	102.45	30.99
	合	617.98	186.90

面積 (座標法) 計算書

地番 = 34-1
測点名

	[1] X (i)	[2] X (i+1)-X (i-1)	[3] Y (i)	[4] Y (i+1)-Y (i-1)	[2] * [3]	[1] * [4]	方向角	夾角	距離
34-41K	-150160.674	2.712	-41697.209	11.688	-113082.830808	-1755077.957712	8-24-58	90-00-03	4.393
34-32	-150156.328	4.058	-41696.566	-8.325	-169204.664828	1250051.430600	268-09-38	79-44-40	8.973
34-2	-150156.616	-2.712	-41705.534	-11.688	113105.408208	1755030.527808	228-17-36	140-07-58	3.643
34-40K	-150159.040	-4.058	-41708.254	8.325	169252.094732	-1250074.008000	98-24-55	50-07-19	11.165
合計				倍面積 面積	70.007304 35.00	-70.007304 35.00			28.174

面積 (座標法) 計算書

地番 = 34-2
測点名

	[1] X (i)	[2] X (i+1)-X (i-1)	[3] Y (i)	[4] Y (i+1)-Y (i-1)	[2] * [3]	[1] * [4]	方向角	夾角	距離
34-33K	-150156.313	12.532	-41696.084	1.373	-522535.324688	-206164.617749	268-13-03	79-48-27	0.482
34-32	-150156.328	-12.471	-41696.566	-2.324	519997.874586	348963.306272	188-24-43	100-11-40	12.591
34-43	-150168.784	-12.532	-41698.408	-1.373	522564.449056	206181.740432	99-12-17	90-47-34	0.475
34-44K	-150168.860	12.471	-41697.939	2.324	-520014.997269	-348992.430640	8-24-36	89-12-19	12.683
合計				倍面積 面積	12.001685 6.00	-12.001685 6.00			26.231

面積 (座標法) 計算書

地番 = 34-3
測点名

	[1] X (i)	[2] X (i+1)-X (i-1)	[3] Y (i)	[4] Y (i+1)-Y (i-1)	[2] * [3]	[1] * [4]	方向角	夾角	距離
34-33K	-150156.313	-12.595	-41696.084	-3.404	525162.177980	511132.089452	188-24-36	100-11-06	12.683
34-44K	-150168.860	-14.473	-41697.939	10.080	603494.271147	-1513702.108800	99-10-01	90-45-25	12.089
34-35K	-150170.786	2.420	-41686.004	13.642	-100880.129680	-2048629.862612	21-26-37	102-16-36	4.669
K258	-150166.440	8.118	-41684.297	2.851	-338393.123046	-428124.520440	16-52-19	175-25-42	3.942
K257	-150162.668	5.560	-41683.153	-10.920	-231758.330680	1639776.334560	278-25-49	81-33-30	12.196
34-42K	-150160.880	6.403	-41695.217	-11.382	-266974.474451	1709131.136160	8-24-23	269-58-34	4.665
34-31K	-150156.265	4.567	-41694.535	-0.867	-190418.941345	130185.481755	268-13-30	79-49-07	1.550
合計				倍面積 面積	231.449925 115.72	-231.449925 115.72			51.794

面積 (座標法) 計算書

地番 = 34-4
測点名

	[1] X (i)	[2] X (i+1)-X (i-1)	[3] Y (i)	[4] Y (i+1)-Y (i-1)	[2] * [3]	[1] * [4]	方向角	夾角	距離
K257	-150162.668	3.587	-41683.153	13.735	-149517.469811	-2062484.244980	17-16-11	98-50-22	5.629
K256	-150157.293	6.822	-41681.482	2.010	-284351.070204	-301816.158930	13-11-07	175-54-56	1.486
34-31	-150155.846	1.028	-41681.143	-13.053	-42848.215004	1959984.257838	268-12-29	75-01-22	13.399
34-31K	-150156.265	-5.034	-41694.535	-14.074	209890.289190	2113299.273610	188-24-23	100-11-54	4.665
34-42K	-150160.880	-6.403	-41695.217	11.382	266974.474451	-1709131.136160	98-25-49	90-01-26	12.196
合計				倍面積 面積	148.008622 74.00	-148.008622 74.00			37.375

面積 (座標法) 計算書

地番 = 34-5
測点名

	[1] X (i)	[2] X (i+1)-X (i-1)	[3] Y (i)	[4] Y (i+1)-Y (i-1)	[2]*[3]	[1]*[4]	方向角	夾角	距離
34-31	-150155.846	-1.815	-41681.143	-11.322	75651.274545	1700064.488412	193-11-07	105-06-16	1.486
K256	-150157.293	-3.052	-41681.482	9.608	127211.883064	-1442711.271144	99-09-57	85-58-50	10.076
K255	-150158.898	1.815	-41671.535	11.322	-75633.836025	-1700099.043156	21-54-09	102-44-12	3.686
34-3	-150155.478	3.052	-41670.160	-9.608	-127177.328320	1442693.832624	268-04-51	66-10-42	10.989
合計				倍面積 面積	51.993264 25.99	-51.993264 25.99			26.237

面積 (座標法) 計算書

地番 = 34-6
測点名

	[1] X (i)	[2] X (i+1)-X (i-1)	[3] Y (i)	[4] Y (i+1)-Y (i-1)	[2]*[3]	[1]*[4]	方向角	夾角	距離
34-43	-150168.784	-1.196	-41698.408	-13.127	49871.295968	1971265.627568	192-44-21	93-34-15	3.279
34-46	-150171.982	-9.419	-41699.131	-1.695	392764.114889	254541.509490	188-52-49	176-08-28	6.296
34-48	-150178.203	-4.674	-41700.103	-11.946	194906.281422	1794028.813038	278-01-27	269-08-38	11.083
34-38K	-150176.656	1.052	-41711.077	-11.047	-43880.053004	1659001.518832	188-23-21	90-21-54	0.500
34-37K	-150177.151	-2.111	-41711.150	11.392	88052.237650	-1710818.104192	98-01-23	89-38-02	11.578
34-49K	-150178.767	-0.441	-41699.685	11.649	18389.561085	-1749432.456783	8-54-00	90-52-37	1.189
34-47K	-150177.592	-0.242	-41699.501	9.251	10091.279242	-1389292.903592	98-52-57	269-58-57	9.177
34-36K	-150179.009	-0.150	-41690.434	9.922	6253.565100	-1490076.127298	34-00-44	115-07-47	1.529
K261	-150177.742	3.666	-41689.579	2.256	-152833.996614	-338800.985952	30-17-05	176-16-21	2.778
K260	-150175.343	6.918	-41688.178	3.560	-288398.815404	-534624.221080	25-32-12	175-15-07	5.008
K259	-150170.824	4.557	-41686.019	2.174	-189963.188583	-326471.371376	21-32-28	176-00-16	0.041
34-35K	-150170.786	2.040	-41686.004	-12.389	-85039.448160	1860465.867754	279-10-06	77-37-38	12.565
合計				倍面積 面積	212.833591 106.41	-212.833591 106.41			65.023

面積 (座標法) 計算書

地番 = 34-7
測点名

	[1] X (i)	[2] X (i+1)-X (i-1)	[3] Y (i)	[4] Y (i+1)-Y (i-1)	[2]*[3]	[1]*[4]	方向角	夾角	距離
34-47K	-150177.592	0.242	-41699.501	-9.251	-10091.279242	1389292.903592	188-54-00	90-01-03	1.189
34-49K	-150178.767	0.441	-41699.685	-11.649	-18389.561085	1749432.456783	278-01-23	269-07-23	11.578
34-37K	-150177.151	-1.511	-41711.150	-11.925	63025.547650	1790862.525675	188-22-07	90-20-44	3.161
K263	-150180.278	-4.005	-41711.610	19.268	167054.998050	-2893673.596504	92-32-54	84-10-47	19.748
K262	-150181.156	1.269	-41691.882	21.176	-52906.998258	-3180236.159456	33-59-49	121-26-55	2.590
34-36K	-150179.009	3.564	-41690.434	-7.619	-148584.706776	1144213.869571	278-52-57	64-53-08	9.177
合計				倍面積 面積	108.000339 54.00	-108.000339 54.00			47.443

面積 (座標法) 計算書

地番 = 34-9
測点名

	[1] X (i)	[2] X (i+1)-X (i-1)	[3] Y (i)	[4] Y (i+1)-Y (i-1)	[2] * [3]	[1] * [4]	方向角	夾 角	距 離
34-39K	-150167.887	-7.109	-41709.805	-12.496	296515.003745	1876497.915952	188-15-13	89-50-27	8.861
34-38K	-150176.656	-10.316	-41711.077	9.702	430291.470332	-1457013.916512	98-01-27	89-46-14	11.083
34-48	-150178.203	4.674	-41700.103	11.946	-194906.281422	-1794028.813038	8-52-49	90-51-22	6.296
34-46	-150171.982	8.656	-41699.131	1.522	-360947.677936	-228561.756604	12-43-41	183-50-52	2.496
34-45K	-150169.547	4.095	-41698.581	-10.674	-170755.689195	1602909.744678	278-24-46	85-41-05	11.346
合計				倍面積 面積	196.825524 98.41	-196.825524 98.41			40.082

面積 (座標法) 計算書

地番 = 34-10
測点名

	[1] X (i)	[2] X (i+1)-X (i-1)	[3] Y (i)	[4] Y (i+1)-Y (i-1)	[2] * [3]	[1] * [4]	方向角	夾 角	距 離
34-45K	-150169.547	-0.897	-41698.581	11.397	37403.627157	-1711482.327159	12-46-30	94-21-44	0.782
34-43	-150168.784	8.873	-41698.408	1.372	-369989.974184	-206031.571648	8-24-35	175-38-05	8.198
34-41K	-150160.674	9.744	-41697.209	-9.846	-406297.604496	1478481.996204	278-24-55	90-00-20	11.165
34-40K	-150159.040	1.359	-41708.254	-11.353	-56681.517186	1704755.581120	228-14-23	129-49-28	0.413
34-1	-150159.315	-8.847	-41708.562	-1.551	368995.648014	232897.097565	188-15-03	140-00-40	8.662
34-39K	-150167.887	-10.232	-41709.805	9.981	426774.724760	-1498825.680147	98-24-46	90-09-43	11.346
合計				倍面積 面積	204.904065 102.45	-204.904065 102.45			40.566