

**BLOCK NO. 34**

街区略図

工区

ネ2

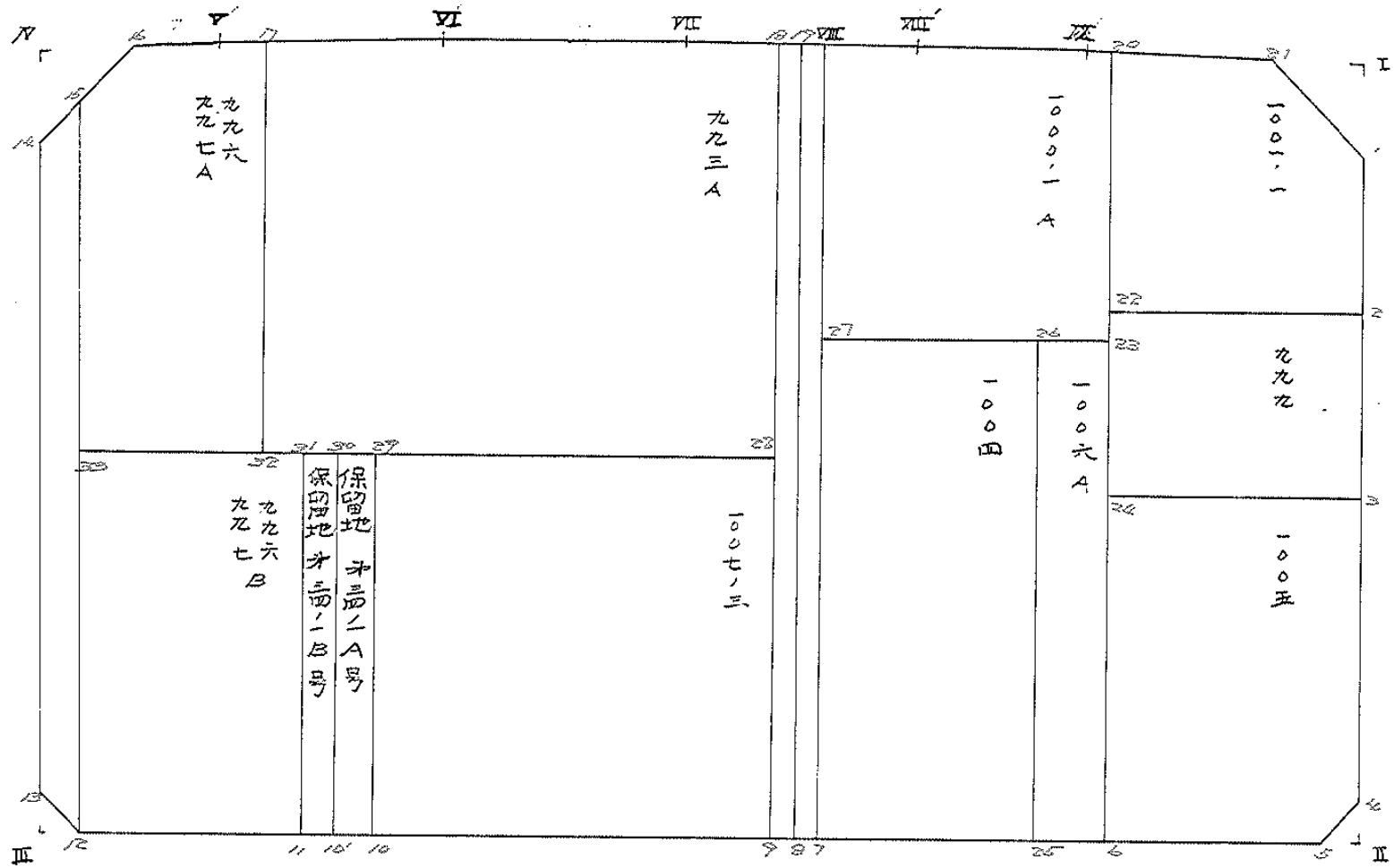
ブロック

34

記入者



点検者





# 面地計算

# 面積計算書

工区

机

ブロック

34

計算者



精算者

備考

100E, 1006A

100E

1006A

点	①	②	③	④	⑤	⑥	③ × ⑤		② × ⑥	
	X	X-(定数)	X <sub>n-1</sub> -X <sub>n+1</sub>	Y	Y-(定数)	Y <sub>n-1</sub> -Y <sub>n+1</sub>	+	-	+	-
	-152	-152,140		-38	-38,940					
3	141.793	1.793	+ 19.464	940.677	0.677	- 23.586		13.177129	42.053838	
4	160.456	20.456	+ 23.601	942.239	2.239	+ 6.977		52.819038		142.721512
5	165.584	25.584	+ 4.718	947.654	7.654	+ 24.352		36.111572		618.151168
6	165.174	25.174	- 24.392	966.590	26.590	+ 19.170	648.593280			257.411580
24	140.992	0.992	23.391	965.824	25.824	- 25.913	604.049184		25.705696	
							1252.632464	102.107732	67.759534	1218.284260
							1150.524726			1150.524726
							$\frac{1}{2}$ 575.26			
	-152	-152,120		-38	-38,960					
23	124.919	4.919	+ 40.443	965.315	5.315	- 4.426		214.954545	21.771494	
6	165.174	45.174	+ 40.192	966.590	6.590	+ 6.979		264.865280		315.269346
25	165.111	45.111	- 40.443	972.294	12.294	+ 4.426	497.206242			199.661286
26	124.731	4.731	- 40.192	971.016	11.016	- 6.979	442.755072		33.017649	
							939.961314	479.319825	54.789143	514.990632
							460.141489			460.141489
							$\frac{1}{2}$ 230.07			

# 面積計算書

工区

42

ブロック

34

計算者

精算者

備考

1000-1A,

1004

1000-1A

1001

点	①	②	③	④	⑤	⑥	③ × ⑤		② × ⑥	
	X	X-(定数)	X <sub>n-1</sub> -X <sub>n+1</sub>	Y	Y-(定数)	Y <sub>n-1</sub> -Y <sub>n+1</sub>	+	-	+	-
	-152.	-152.090		-38.	-38.960					
20	096.964	6.964	+ 28.218	964.430	4.430	- 3.739		125.005740	26.038396	
23	124.919	34.919	+ 27.144	965.315	5.315	+ 25.496		144.270360		890.294824
27	124.108	34.108	- 28.851	989.926	29.926	+ 23.715	863.395026			808.871220
VII	096.068	6.068	- 27.929	989.030	29.030	- 6.476	810.778870		39.296368	
VIII	096.179	6.179	+ 0.633	983.450	23.450	- 19.976		14843850	123.431704	
IX	096.701	6.701	+ 0.785	969.054	9.054	- 19.020		7.107390	127.453020	
.								1674.173896	291.227340	316.219428
.								1382.946556		1382.946556
.								$\frac{1}{2}$ 691.47		
	-152.	-152.120		-38.	-38.970					
26	124.731	4.731	+ 41.003	971.016	1.016	- 17.632		41.659048	33.416992	
25	165.111	45.111	+ 40.171	972.294	2.294	+ 20.214		92.152274		911.873754
7	164.902	44.902	- 41.003	991.230	21.230	+ 17.632	370.493690			191.712064
27	124.108	4.108	- 40.171	989.926	19.926	- 20.214	300.447346		23.039112	
								1670.941036	133.811322	166.456104
								1537.129714		1703.595818
								$\frac{1}{2}$ 768.56		1537.129714

# 面積計算書

工区

#2

ブロック

34

計算者

精算者

備考

1001-1, 999

1001

10  
10  
10

点	①	②	③	④	⑤	⑥	③	×	⑤	②	×	⑥
	X	X-(定数)	X <sub>n-1</sub> -X <sub>n+1</sub>	Y	Y-(定数)	Y <sub>n-1</sub> -Y <sub>n+1</sub>	+	-	+	-		
	-152	-152,090		-39	-39,930							
1	107.240	17.240	+ 26.200	937.791	7.791	- 6.584		204.467004		113.508160		
2	124.267	34.267	+ 16.234	939.214	9.214	+ 27.478		149.580076				941.588626
22	123.474	33.474	- 27.303	965.269	35.269	+ 25.216	962.949507					944.080384
20	096.964	6.964	- 25.451	964.430	34.430	- 19.471	876.277930			135.596044		
21	098.023	8.023	+ 10.276	945.798	15.798	- 26.639		162.340248		213.724697		
								1839.227437	516.387328	462.828901		1785.669010
								1322.840109				1322.840109
								1/2 661.42				
	-152	-152,120		-39	-39,900							
2	124.267	4.267	+ 18.309	939.214	39.214	- 24.592		717.969126		104.934064		
3	141.783	21.783	+ 16.725	940.677	40.677	+ 26.610		680.322825				579.645630
24	140.992	20.992	- 18.309	965.824	65.824	+ 24.592	1205.171616					516.235264
22	123.474	3.474	- 16.725	965.269	65.269	- 26.610	1091.624025			92.443140		
								2296.795641	399.291951	197.377204		1095.880890
								898.503690				898.503690
								1/2 449.25				

# 面積計算書

工区

北

ブロック

34

計算者



精算者

備考

1007-3

保留地 北34-1A号

点	①	②	③	④	⑤	⑥	③	×	⑤	②	×	⑥
	X	X-(定数)	X <sub>n-1</sub> -X <sub>n+1</sub>	Y	Y-(定数)	Y <sub>n-1</sub> -Y <sub>n+1</sub>	+		-	+		-
9	-152, 164.880	-152, 130, 34.880	27.035	-38, 993.230	-38, 990, 3.230	40.125			27.323050			1397.560000
10	164.446	34.446	27.904	-37, 032.477	42.477	38.931	1185.278208					1341.017226
29	136.976	6.976	27.035	-38, 032.161	42.161	40.125	1139.822625			277.912000		
28	137.411	7.411	27.904	-38, 992.352	2.352	38.931			65.630208	288.517641		
							2325.100813		152.753258	568.427641		2740.57226
							2172.147525					2172.147525
										1/2 = 1086.073725		
10	-152, 164.446	-152, 130, 34.446	27.447	-37, 032.477	2.477	24.35			67.986219			832.76010
10'	164.423	34.423	27.474	-37, 034.596	4.596	1.802	126.362424					62.030246
30	136.952	6.952	27.447	-37, 034.277	4.277	24.35	117.445713			16.928120		
29	136.976	6.976	27.474	-37, 032.161	2.161	1.802			59.444334	12.570752		
							243.808137		127.400753	27.478872		145.906256
							116.407384					116.407384
										1/2 = 58.203692		



# 面積計算書

工区

32

ブロック

34

計測者



精算者

備考

保留地  
34-12号

996  
997

点	①	②	③	④	⑤	⑥	③ × ⑤		② × ⑥	
	X	X-(定数)	X <sub>n-1</sub> -X <sub>n+1</sub>	Y	Y-(定数)	Y <sub>n-1</sub> -Y <sub>n+1</sub>	+	-	+	-
10	-152, 164.423	-152.130 34.423+	27.447	-39, 234.596	-39.034 0.596+	2.437		16.338412		83.888851
11	164.399	34.399+	27.474	-39, 0.36716	2.716+	1.802	74.673704			61.926998
31	136.929	6.929+	27.447	-39, 0.36398	2.398+	2.437	65.817906		16.885973	
30	136.952	6.952+	27.474	-39, 0.34.279	0.279+	1.802		7.670826	12.327504	
							140.471610	21.029238	29.413477	145.875847
							116.462372			116.462372
									1/2 = 38.231186	
11	-152, 164.399	-152.130 34.399+	27.178	-39, 0.36716	-39.030 6.716+	26.729		182.527418		97.450271
12	164.107	34.107+	27.758	-39, 0.63.127	33.127+	26.042	97.539266			88.82142740
33	136.641	6.641+	27.178	-39, 0.62.758	32.758+	26.729	870.296924		171.507287	
31	136.929	6.929+	27.758	-39, 0.36.398	6.398+	26.042		177.575684	180.446018	
							1809.836170	360.123132	357.952330	1807.665365
							1447.713058			1447.713058
									1/2 = 724.856529	

# 面積計算書

工区

第2

ブロック

34

計算者



精算者


備考

水路 14

996  
997A

点	①	②	③	④	⑤	⑥	③ × ⑤		② × ⑥		
	X	X-(定数)	X <sub>n-1</sub> -X <sub>n+1</sub>	Y	Y-(定数)	Y <sub>n-1</sub> -Y <sub>n+1</sub>	+	-	-	-	
12	-152, 164.107	-152.100, 44.107+	58.504	-37, 063.127	-37.060, 3.127+	3.785				182742008	242.644775
13	161.074	61.074-	58.425	-37, 066.086	6.086+	2.215	355.574550				135.278910
14	105.682	3.682-	58.504	-37, 065.342	3.342-	3.785	312.528968			21.326370	
15	102.570	2.570+	58.425	-37, 062.301	2.301-	2.215			134.435725	5.672350	
							668.102918	317.377933	27.178920		377.923905
							350.724785				350.724785
									1/2 = 175.3624725		
15	-152, 102.570	-152.070, 12.570-	41.029	-37, 062.301	22.301-	6.278	914.987729			78.714460	
16	096.612	6.612-	6.476	-37, 056.480	16.480-	17.918	126.724480			131.677816	
17	096.094	6.094-	0.555	-37, 042.383	2.383-	16.999	1.322565			97.497706	
17	096.057	6.057+	41.785	-37, 040.481	0.481-	1.421			20.072585	8.626997	
32	136.879	47.879+	41.584	-37, 040.762	0.762+	22.277			40.003808		1066.60483
33	136.641	47.641-	35.309	-37, 062.758	22.758+	21.339	203.562222				1016.611299
							1826.575976	60.102393	314.717179		2083.211782
							1766.474603				1766.474603
									1/2 = 883.7473015		

# 面積計算書

工区 2区  
 ブロック 34  
 計算者   
 精算者  
 備考 993A, 996, 997A

点	①	②	③	④	⑤	⑥	③	×	⑤	②	×	⑥
	X	X-(定数)	X <sub>n-1</sub> -X <sub>n+1</sub>	Y	Y-(定数)	Y <sub>n-1</sub> -Y <sub>n+1</sub>	+		-	+		-
17	-152 076.057	-152.070 6.057	41.116	-37 240.481	-32.970 50.481	15.736	2075.576796			95.312952		
VI	076.763	5.763	0.302	-37 025.226	35.226	35.247	10.638252			203.137987		
VII	076.755	5.755	0.266	-37 205.232	15.232	34.176			4.251712	196.797980		
18	076.029	6.029	41.656	-38 991.030	1.030	12.880			42.905680	71.653520		
22	137.411	27.411	40.850	-38 992.352	2.352	47.932			96.079200	2367.326052		
32	136.879	16.879	41.354	-37 040.962	50.962	42.129	2107.482548			2756.239391		
							4193.677576		143.034572	572.904443		4623.565443
							4050.661004			4050.661004		
									1/2 = 2025.330502			
15	-152 102.570	-152.070 12.570	40.029	-37,0 62.301	-37,040 22.301	6.278	592.686721			729.14460		
16	96.612	6.612	6.476	56.480	16.480	19.918	106.724480			131.697816		
V	96.094	6.094	0.555	42.383	2.383	15.999	1.322565			97.497906		
17	96.057	6.057	40.785	40.481	0.481	1.421			17.67585	2.605977		
32	136.879	16.879	40.584	40.962	0.962	22.277			37.141808	1044.323483		
33	136.641	16.641	34.309	62.758	22.758	21.339	780.804722			995.212277		
							178.153776		58.659393	316.717177		2037.576782
							1722.878603			1722.878603		

# 面積計算書

工区

第2

ブロック

34

計算者



精算者

備考

水路管理道

水路⑩

点	①	②	③	④	⑤	⑥	③	×	⑤	②	×	⑤
	X	X-(定数)	X <sub>n-1</sub> -X <sub>n+1</sub>	Y	Y-(定数)	Y <sub>n-1</sub> -Y <sub>n+1</sub>	-		-	+		-
7	-152.164702	-152.07074702	69.823	-38.991.230	-38.78011.230	+ 3.200	772.88270					237.696400
8	164.871	74.871	68.853	-38.992.230	12.230	- 1.200	842.072170					27.267200
17	076.047	6.047	68.823	-38.970.030	10.030	- 3.200	690.274670					19.356800
18	076.068	6.068	68.853	-38.987.030	9.030	+ 1.200	621.742570					7.221600
							1532.366880		1394.624880		107.226000	2467.68000
							137.742000					137.742000
												1/2 = 68.871000
8	-152.164871	-152.07074871	68.831	-38.992.230	2.230	+ 3.200	153.473130					237.651200
9	164.880	74.880	68.862	-38.993.230	3.230	- 1.200	222.424260					27.256000
12	076.027	6.027	68.831	-38.991.030	1.030	- 3.200	70.275730					19.272800
17	076.047	6.047	68.867	-38.970.030	6.030	+ 1.200	2.065260					7.252800
							273.320170		155.358770		107.148800	246.710000
							137.761200					137.761200
												1/2 = 68.880600

# 面積計算書

工区

※2

ブロック

34

計算者



精算者

備考

陽却 I. II.

点	①	②	③	④	⑤	⑥	⑦ × ⑧		② × ⑥	
	X	X-(定数)	X <sub>n-1</sub> -X <sub>n+1</sub>	Y	Y-(定数)	Y <sub>n-1</sub> -Y <sub>n+1</sub>	+	-	+	-
I	-152.078	-152.078		-38.062	-38.062					
1	0.520	0.520	+ 7.217	737.062	0.062	- 8.007	0.571454	4.163640		
21	107.240	7.240	- 0.477	737.791	0.791	+ 8.736	0.573127			80.720640
	0.023	0.023	+ 8.720	945.798	8.793	- 0.727	76.718560		0.616757	
							77.111687	0.571454	0.180467	80.720640
							76.540233			76.540233
									1/2 = 38.2701165	
									38.27	
II	-152.160	-152.160		-38.654	-38.654					
5	0.654	0.654	+ 4.983	942.654	0.654	+ 3.416	3.222912			29.457624
4	165.439	5.384	- 4.983	947.654	5.454	- 0.416	78.173882		2.237744	
	0.456	0.456	+ 0.055	942.239	0.738	+ 5.000	0.013670	2.280000		
							28.173882	3.236002	4.57744	29.457624
							24.937880			24.937880
									1/2 = 12.469740	
									12.47	

# 面積計算書

工区

カ2

ブロック

34

計算者



精算者

備考

隅切Ⅱ,Ⅳ

点	①	②	③	④	⑤	⑥	③ × ⑤		② × ⑥	
	X	X-(定数)	X <sub>n-1</sub> -X <sub>n+1</sub>	Y	Y-(定数)	Y <sub>n-1</sub> -Y <sub>n+1</sub>	+	-	+	-
Ⅱ	-152 164.574	-152.150 4.074	3.033	-39 0.66.126	-39.050 6.126	2959	18.580.158			12.054.966
13	161.074	1.074	0.233	0.66.086	6.086	2977		0.200838	3.220926	
12	164.107	4.107	3.000	0.63.127	3.127	0.040		9.381.000		0.164.280
							18.580.158	9.581.838	3.220.926	12.217.246
							8.998.320			8.998.320
								1/2 = 4.499.160		
								4.50		
Ⅳ	-152 096.933	-152.070 6.933	9.070	-39 0.65.225	-39.050 15.225	8.852	138.090.750			61.440.246
16	096.612	6.612	8.749	0.66.480	6.480	0.117		36.693.520		0.773.604
14	105.682	15.682	0.321	0.65.342	15.342	8.745		4.924.782		137.139.096
							138.090.750	61.618.302	61.440.246	137.912.674
							76.472.448			76.472.448
								1/2 = 38.236.224		
								38.24		

計年月  
算日

計算者



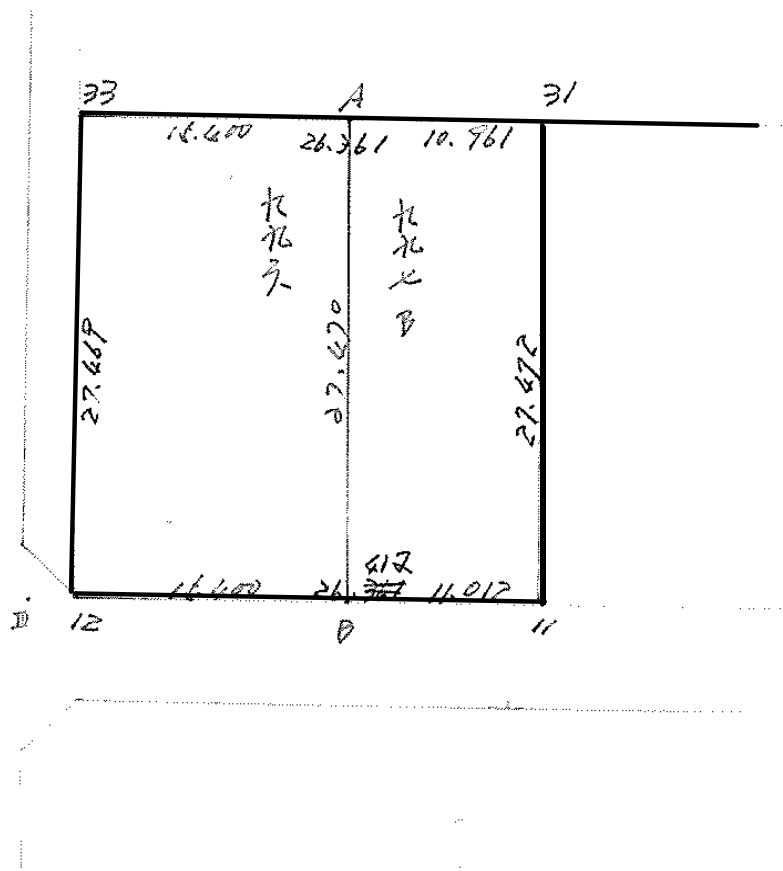
検査者



B.NO. 34

各筆面積計算書

地番	算式	隅切	地積	摘要
1	1001-1		661.42	
2	999		449.25	
3	1005		575.26	
4	1006A		230.07	
5	1004		768.56	
6	1007-3		1,086.07	
7	保留地第34-1A号		58.20	
8	" -1B号		58.23	
9	996, 997B		724.85	
10	996, 997A		861.43	
11	993A		2,025.33	
12	1000-1A		691.47	
			8,190.14	
	池上	68.88		
	水路第11号線	68.87		
	" 14 "	175.36		
		313.11		
		合計	8,503.25	
		全体	8,503.33	
	公共用地	313.11		差 - 0.08
	保留地	116.43		2筆
	換地地積	8,073.71		10筆





# 面積計算書

工  
区

ブ  
ロ  
ック

34

計  
算  
者

林

精  
算  
者

備  
考

296

157B