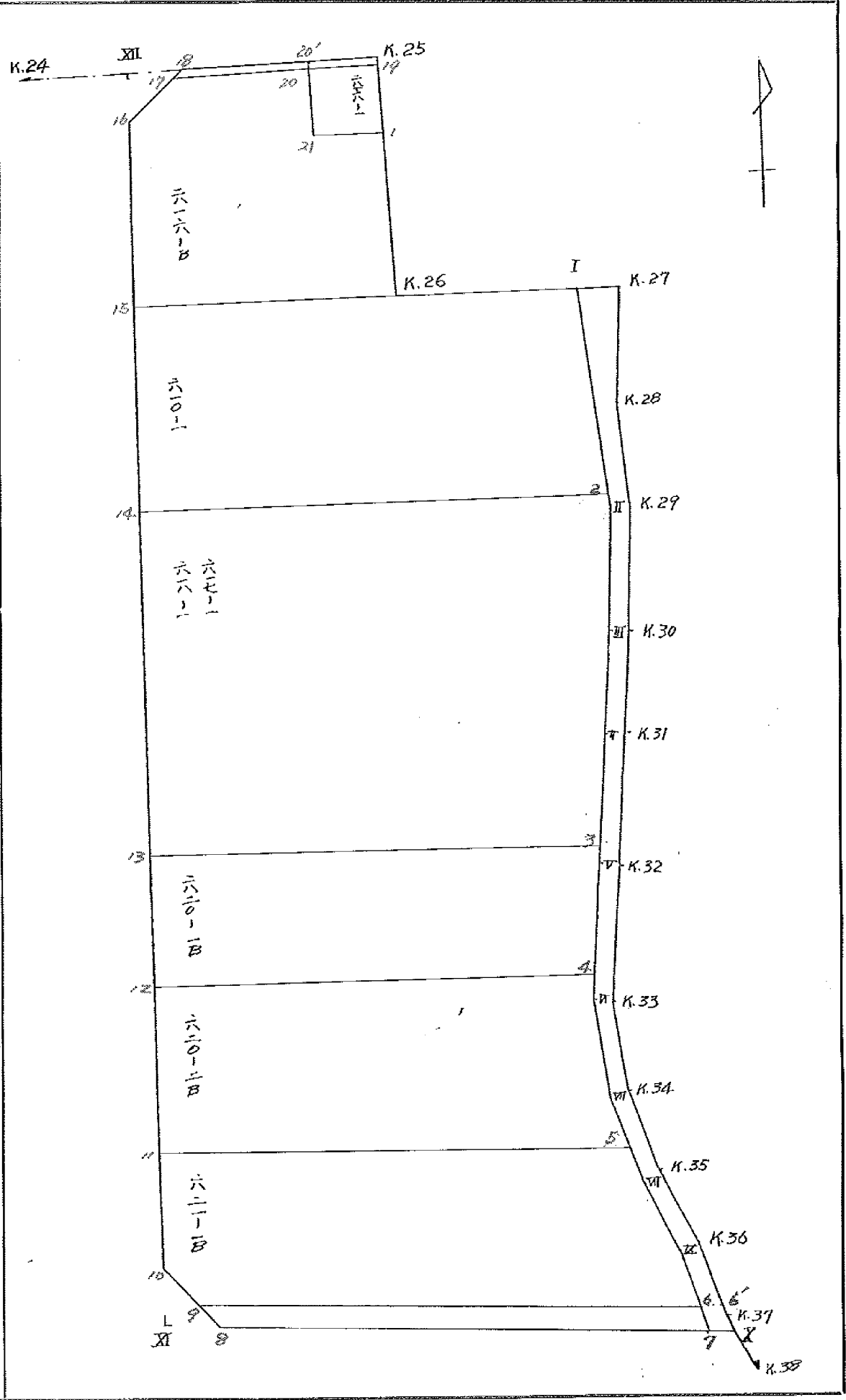


BLOCK NO. 9-1


点検者

記入者
 9-1-1
 ブロック
 2
 区
 工
 区
 略
 地
 面



面積計算書

工区

※2

ブロック

9-1

計算者



精算者



備考

全透

201

点	①	②	③	④	⑤	⑥	③ × ⑤	② × ⑥
	X	X-(定数)	X _{n-1} -X _{n+1}	Y	Y-(定数)	Y _{n-1} -Y _{n+1}		
K.25	-151. 925.979	-151.900 925.979 ✓	+33.568 +33.568 ✓	-38. 552.748	-38.500 52.748 ✓	-15.085 -15.085 ✓	1770.644864	391.893215 ✓
K.26	957.498	57.498 ✓	+33.291 +33.291 ✓	552.927	52.927 ✓	-14.951 -14.951 ✓	1761.992757	859.652598 ✓
K.27	959.270	59.270 ✓	+11.568 +11.568 ✓	537.797	37.797 ✓	-13.245 -13.245 ✓	437.235696	785.031150 ✓
K.28	969.066	69.066 ✓	+19.168 +19.168 ✓	539.682	39.682 ✓	+2.282 +2.282 ✓	760.624576	157.608612 ✓
K.29	978.438	78.438 ✓	+17.714 +17.714 ✓	540.079	40.079 ✓	+1.004 +1.004 ✓	709.959406	78.751752 ✓
K.30	986.780	86.780 ✓	+19.557 +19.557 ✓	540.686	40.686 ✓	+2.410 +2.410 ✓	795.696102	209.139800 ✓
K.31	997.995	97.995 ✓	+26.582 +26.582 ✓	542.489	42.489 ✓	+4.684 +4.684 ✓	1129.442598	459.008580 ✓
K.32	-152. 013.362	113.362 ✓	+30.087 +30.087 ✓	545.370	45.370 ✓	+5.620 +5.620 ✓	1265.047190	637.094440 ✓
K.33	028.082	128.082 ✓	+21.606 +21.606 ✓	548.109	48.109 ✓	+2.658 +2.658 ✓	1039.443054	340.441956 ✓
K.34	034.968	134.968 ✓	+13.219 +13.219 ✓	548.028	48.028 ✓	-0.773 -0.773 ✓	634.882132	104.332264 ✓
K.35	041.301	141.301 ✓	+14.802 +14.802 ✓	547.336	47.336 ✓	-3.513 -3.513 ✓	700.667472	496.390413 ✓
K.36	049.770	149.770 ✓	+18.442 +18.442 ✓	544.515	44.515 ✓	-4.630 -4.630 ✓	820.945630	693.435100 ✓
K.37	059.743	159.743 ✓	+10.694 +10.694 ✓	542.706	42.706 ✓	-2.154 -2.154 ✓	456.697964	344.086422 ✓
I	060.464	160.464 ✓	-5.669 -5.669 ✓	542.361	42.361 ✓	+44.767 +44.767 ✓	240.144509	7183.491888 ✓
8	054.074	154.074 ✓	-8.649 -8.649 ✓	587.473	87.473 ✓	+46.796 +46.796 ✓	756.553976	7210.046904 ✓
10	051.815	151.815 ✓	-128.432 -128.432 ✓	589.157	89.157 ✓	-17.183 -17.183 ✓	1450.611824	2608.637145 ✓
16	-151. 925.642	25.642 ✓	+27.885 +27.885 ✓	570.290	70.290 ✓	+21.145 +21.145 ✓	1989.086650	542.200090 ✓

面積計算書

工区

42

ブロック

9-1

計算者

精算者

備考

全体

292

点	①	②	③	④	⑤	⑥	③	×	⑤	②	×	⑥
	X	X-(定数)	X _{n-1} -X _{n+1}	Y	Y-(定数)	Y _{n-1} -Y _{n+1}	+	-	+	-		
18	151,923.930	-151,900 22,930	+ 0.337	38, 568.012	-38,500 68.012	-17.542			22,920.644	419,780.660		
									21436.346960	12,406,199.485		7245,436.457
									9030.147475			9030.147475
									1/3 4615.07			

画地計算

面積計算書

工区

※2

ブロック

9-1

計算者



精算者



備考

616-1
616B

点	①	②	③	④	⑤	⑥	③ × ⑤		② × ⑥	
	X	X-(定数)	X _{n-1} -X _{n+1}	Y	Y-(定数)	Y _{n-1} -Y _{n+1}	+	-	+	-
	-151.	-151.920.		-38.	-38.550.					
19	926.392	6.382	+ 6.014	552.750	2.750	- 4.479		16.538500		28.584978
1	931.791	11.791	+ 4.713	552.781	2.781	+ 5.224		13.106853		61.596184
21	931.095	11.095	- 6.014	557.974	7.974	+ 4.479	47.955636			49.694505
20	925.777	5.777	- 4.713	557.260	7.260	- 5.224	34.216380		30.179048	
							82.172016	29.645355	58.764026	111.290689
							52.526663			52.526663
										$\frac{1}{2} = 26.2633315$
20	925.777	25.777	+ 6.823	557.260	57.260	- 10.493		390.624980		270.478061
21	931.095	31.095	+ 6.014	557.974	57.974	- 4.479		348.655636		139.274505
1	931.791	31.791	+ 26.403	552.781	52.781	- 5.047		1393.576743		160.449177
K-26	957.498	57.498	+ 22.467	552.927	52.927	+ 21.788		1189.110909		1252.766424
15	954.258	54.258	- 31.856	574.569	74.569	+ 17.363	2375.470064			942.081654
16	925.642	25.642	- 29.986	570.290	70.290	- 6.102	2107.715940			156.467484
17	924.272	24.272	+ 0.125	568.467	68.467	- 13.030		9.243045		316.264160
							4483.186004	3331.271315	1042.923387	2194.848078
							1151.914691			1151.914691
										$\frac{1}{2} = 576.9573455$

面積計算書

工区

※2

ブロック

9-2

計算者

精算者

署名

備考

610-1

点	①	②	③	④	⑤	⑥	③ × ⑤	② × ⑤
	X	X-(定数)	X _{n-1} -X _{n+1}	Y	Y-(定数)	Y _{n-1} -Y _{n+1}	+ -	+ -
I	-151. 958.981✓	-151.950. 8.981✓	+ 19.707✓	-38. 540.264✓	-38.500. 40.264✓	11.915✓	793.482648✓	107.008615✓
2	977.205✓	27.205✓	+ 12.814✓	541.012✓	41.012✓	+ 36.927✓	525.527768✓	1004.599035✓
14	971.795✓	21.795✓	- 22.947✓	577.191✓	77.191✓	+ 33.557✓	1,771.301877✓	731.374815✓
15	954.258✓	4.258✓	- 14.297✓	574.569✓	74.569✓	- 24.264✓	1,066.112993✓	103.316112✓
K.26	957.498✓	7.498✓	+ 4.723✓	552.927✓	52.927✓	- 34.305✓	249.974221✓	257.218890✓
							2,837.414870✓	1,568.984637✓
							1,268.430233✓	1,268.430233✓
								1/2 = 634.2151165✓

面積計算書

工区

#2

ブロック

9-1

計算者

精算者

書

備考

617-1 . 618-1

点	①	②	③	④	⑤	⑥	③ × ⑤		② × ⑥	
	X	X-(定数)	X _{n-1} -X _{n+1}	Y	Y-(定数)	Y _{n-1} -Y _{n+1}	+	-	+	-
2	-151. 977.205	-151.970 7.205	+ 6.635	-38. 541.012	-38.520 1.012	- 36.129		6.714620	260.309445	
II	978.430	8.430	+ 9.400	541.062	1.062	+ 0.676		9.982800		5.698680
III	986.605	16.605	+ 19.340	541.688	1.688	+ 2.408		22.645920		39.984840
IV	997.770	27.770	+ 23.075	543.470	3.470	+ 3.985		80.070250		110.663450
3	-152. 009.680	39.680	+ 6.471	545.673	5.673	+ 38.573		36.709983		1530.576640
13	004.241	34.241	- 37.885	582.049	42.049	+ 31.518	1592.599055			1079.207838
14	-151.991.795	1.795	- 27.036	597.191	37.191	- 41.031	1,005.495876		73.650645	
							2598.294931	166.123573	333.960090	2766.131448
							2432.171358			2432.171358
								1/2 = 1216.085679		

面積計算書

工区 #2

ブロック

9-1

計算者



精算者



備考

620-1B

点	①	②	③	④	⑤	⑥	③ × ⑤	② × ⑤
	X	X-(定数)	X _{n-1} -X _{n+1}	Y	Y-(定数)	Y _{n-1} -Y _{n+1}	+ -	+ -
3	-152, 009.680	-152,000 9,680	+ 8.917	-38, 545.673	-38,540 5,673	-35.726		50.586141
7	013.158	13,158	+ 14.562	546.317	6,317	+ 2.744		91.988154
4	024.242	24,242	+ 5.728	548.417	8,417	+ 37.916		48.212576
12	018.886	18,886	- 20.001	580.233	44,233	+ 33.626	884.704233	
13	004.241	4,241	- 9.206	582.043	42,043	- 38.560	387.047858	163.532960
							1,271.752091	190.786871
							1,080.965220	509.360640
								1,590.325860
								1,080.965220
								1/2 = 540.482610

面積計算書

工区

#2

ブロック

9-1


計算者

精算者

備考

620-2B

点	①	②	③	④	⑤	⑥	③	×	⑤	②	×	⑥
	X	X-(定数)	X _{n-1} -X _{n+1}	Y	Y-(定数)	Y _{n-1} -Y _{n+1}	+	-	+	-		
	-152	-152.100		-38	-38.440							
4	024.242	24.242	+ 7.092	548.417	8.417	- 35.108			76.527364	851.088196		
7	027.978	27.978	+ 10.824	549.125	9.125	+ 9.599			98.769000			16.758822
7	035.066	35.066	+ 12.041	549.016	9.016	- 9.624			128.561656	21.891194		
5	040.019	40.019	- 0.736	548.501	8.501	+ 37.527	6.256736					1501.793913
11	034.330	34.330	- 21.133	586.543	46.543	+ 35.732	983.593219					1226.679560
12	018.886	18.886	- 10.088	584.233	44.233	- 38.126	446.222504			720.047636		
									1436.072459	283.858020	1593.016956	2744.291395
									1152.214439			452.214439
									1/5 576.10			

面積計算書							工区	#2		ブロック	9-1	計算者		精算者	備考	621-1B	
点	①	②	③	④	⑤	⑥	③	×	⑤	②	×	⑥					
	X	X-(定数)	X _{n-1} -X _{n+1}	Y	Y-(定数)	Y _{n-1} -Y _{n+1}	+	-	+	-							
	-152	-152.000		-38	-38.500												
5	040.019	40.019	+ 7.199	548.501	48.501	- 38.199			349.158699	1528.685781							
Ⅲ	041.529	41.529	+ 9.955	548.344	48.344	- 3.011			481.264520	125.043819							
Ⅳ	049.974	49.974	+ 17.971	545.490	45.490	- 4.537			806.128290	226.732078							
6	059.250	59.250	+ 2.971	543.807	43.807	+ 42.825			130.150597							2537.38250	
9	052.945	52.945	- 7.435	588.315	88.315	+ 45.350	656.622025									2401.055750	
10	051.815	51.815	- 18.615	589.157	89.157	- 1.772	1659.657555									91.816180	
11	034.330	34.330	- 11.796	586.543	86.543	+ 40.656	1020.861228									1395.720480	
							3337.140808	1766.702106	3367.998298	4938.437000							
							1570.438702									1570.438702	
																$\sqrt{2} 785.21$	

面積計算書

工区 **カ** **マ** **9-1** **9-1** **泥上** **その1**
 計算者 **三和**

点	①	②	③	④	⑤	⑥	③ × ⑤		② × ⑥	
	X	X-(定数)	X _{n-1} -X _{n+1}	Y	Y-(定数)	Y _{n-1} -Y _{n+1}	+	-	+	-
K.27	-151.959.270 ✓	-151.950 ✓	+10.085 ✓	-38.537.797 ✓	-38.500 ✓	-0.582 ✓			381.182745 ✓	34.495140 ✓
K.28	969.066 ✓	69.066 ✓	+19.168 ✓	539.682 ✓	39.682 ✓	+2.282 ✓			760.624576 ✓	157.608612 ✓
K.29	978.438 ✓	78.438 ✓	+17.714 ✓	540.079 ✓	40.079 ✓	+1.004 ✓			709.959406 ✓	79.751752 ✓
K.30	986.780 ✓	86.780 ✓	+19.557 ✓	540.686 ✓	40.686 ✓	+2.410 ✓			795.696102 ✓	209.139850 ✓
K.31	997.995 ✓	97.995 ✓	+26.582 ✓	542.489 ✓	42.489 ✓	+4.684 ✓			1129.442598 ✓	459.008580 ✓
K.32	-152.013.362 ✓	113.362 ✓	+30.087 ✓	545.370 ✓	45.370 ✓	+5.620 ✓			1265.047190 ✓	637.094440 ✓
K.33	028.082 ✓	28.082 ✓	+21.606 ✓	548.109 ✓	48.109 ✓	+2.658 ✓			1039.443054 ✓	340.441956 ✓
K.34	034.968 ✓	34.968 ✓	+13.219 ✓	548.028 ✓	48.028 ✓	-0.773 ✓			634.882132 ✓	104.330264 ✓
K.35	041.301 ✓	41.301 ✓	+14.802 ✓	547.336 ✓	47.336 ✓	-3.513 ✓			700.667472 ✓	496.390412 ✓
K.36	049.770 ✓	49.770 ✓	+18.442 ✓	544.515 ✓	44.515 ✓	-4.630 ✓			820.945630 ✓	693.435100 ✓
K.37	059.743 ✓	59.743 ✓	+10.094 ✓	542.706 ✓	42.706 ✓	-2.154 ✓			456.697964 ✓	344.086422 ✓
Ⅹ	060.464 ✓	60.464 ✓	+0.543 ✓	542.361 ✓	42.361 ✓	+0.914 ✓			23.002023 ✓	126.664096 ✓
Ⅶ	060.286 ✓	60.286 ✓	-10.490 ✓	543.620 ✓	43.620 ✓	+3.129 ✓	457.573800 ✓			501.534894 ✓
Ⅵ	049.974 ✓	49.974 ✓	-18.757 ✓	545.490 ✓	45.490 ✓	+4.724 ✓	853.255930 ✓			708.477176 ✓
V	041.529 ✓	41.529 ✓	-14.908 ✓	548.344 ✓	48.344 ✓	+3.526 ✓	720.712352 ✓			499.031254 ✓
Ⅳ	035.066 ✓	35.066 ✓	-13.557 ✓	549.016 ✓	49.016 ✓	+0.781 ✓	664.245816 ✓			105.486546 ✓
Ⅲ	027.978 ✓	27.978 ✓	-21.908 ✓	549.125 ✓	49.125 ✓	-2.699 ✓	1076.230500 ✓			345.412622 ✓

面積計算書

工区 第2区
 ブロック 9-1
 計算者
 新築者
 備考 泥工

点	①	②	③	④	⑤	⑥	③ × ⑤	② × ⑥
	X	X-(定数)	X _{n-1} -X _{n+1}	Y	Y-(定数)	Y _{n-1} -Y _{n+1}	+ -	+ -
7	-152.13.158 ✓	-151.900 ✓	-30.208 ✓	-38.46.317 ✓	-38.500 ✓	-5.655 ✓	1399.143936 ✓	639.908490 ✓
II	-151.997.770 ✓	97.770 ✓	-26.553 ✓	43.470 ✓	43.470 ✓	-4.629 ✓	1154.258910 ✓	452.577330 ✓
III	986.605 ✓	86.605 ✓	-19.340 ✓	41.688 ✓	41.688 ✓	-2.408 ✓	206.245920 ✓	208.544840 ✓
II	978.430 ✓	78.430 ✓	-27.624 ✓	41.062 ✓	41.062 ✓	-1.424 ✓	1124.296688 ✓	111.684320 ✓
I	958.981 ✓	58.981 ✓	-19.160 ✓	40.264 ✓	40.264 ✓	-3.265 ✓	771.458240 ✓	192.572965 ✓
							2227.392092 ✓	2323.437906 ✓
							219.891200 ✓	219.891200 ✓
							1/2 = 109.900600 ✓	
							109.901 ✓	

面積計算書

工区

9-1 北

ブロック

9-1

計算者

精算者



備考

街路
水路第5号線

点	①	②	③	④	⑤	⑥	③ × ⑤		② × ⑥		
	X	X-(定数)	X _{n-1} -X _{n+1}	Y	Y-(定数)	Y _{n-1} -Y _{n+1}	+	-	+	-	
K. 25	-151. 925.979	-151.920 5.979	+ 2.452	-38. 552.748	-38.552 0.748	-15.262			1.834096	91.251498	
	19 926.382	6.382	- 1.707	552.750	0.750	+15.719	1.280250			100.218658	
	17 924.272	4.272	- 2.452	568.467	16.467	+15.262	40.377084			65.199264	
	18 923.930	3.930	+ 1.707	568.012	16.012	-15.719			27.332484	61.775670	
									41.657324	29.166580	153.027168
								12.490754			12.490754
									1/2 = 6.245377		
									6.25		
水路 ⑤	-152. 059.250	-152.050 9.250	+ 7.341	-38. 543.807	-38.540 3.807	- 44.695			27.947187	413.428750	
	7 060.286	10.286	- 5.176	543.620	3.620	+ 43.666	18.737120			449.148476	
	8 054.074	4.074	- 7.341	587.473	47.473	+ 44.695	248.499293			182.087430	
	9 052.945	2.945	+ 5.176	588.315	48.315	- 43.666			250.078440	122.596370	
									267.236413	278.025627	542.025120
								89.210786			89.210786
									1/2 = 44.605393		
									44.61		

計年月算日

計算者



檢査者

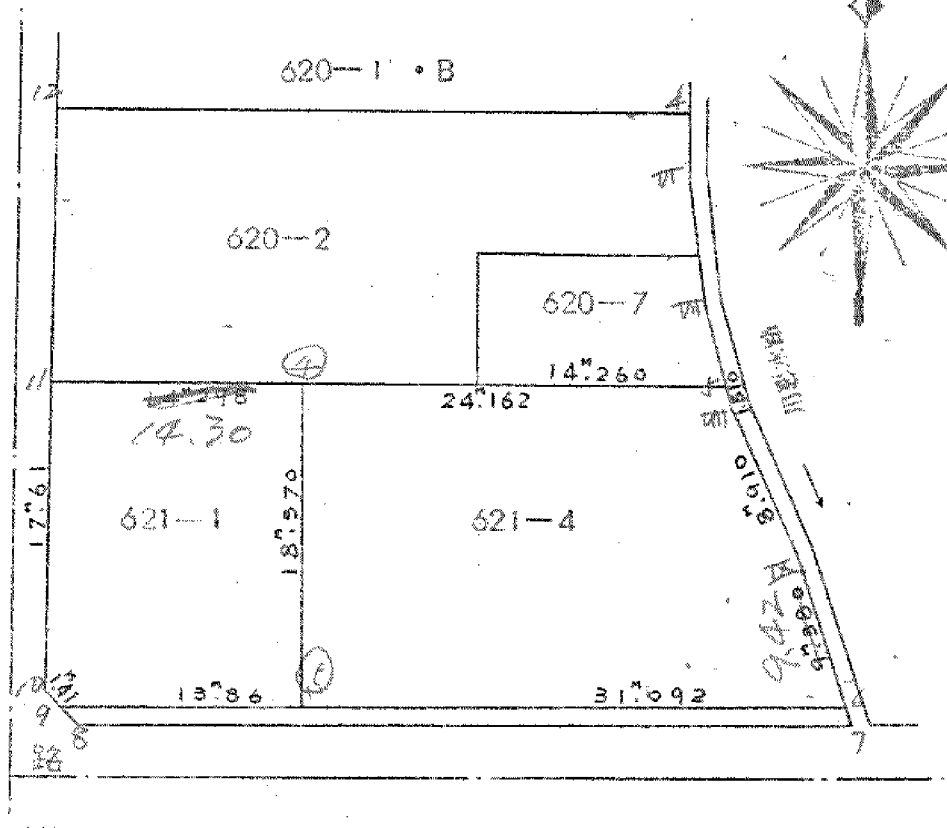
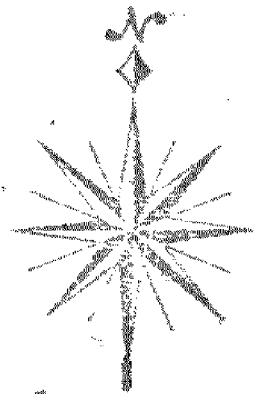


B. NO. 9-1

各筆面積計算書

地番	算式	隔切	地積	摘要
1	616-1		26.26	✓
2	616B		575.95	✓
3	610-1		634.21	
4	617-1, 618-1		1,216.08	
5	620-1B		540.48	
6	620-2B		576.10	
7	621-1B		785.21	7筆
			4,354.29	
	水路第5号線	44.61		
	街路	6.25		
	泥上	109.90		水26号線
	公共用地……	160.76		
		合計	4,515.05	
		全体	4,515.07	
			差 - 0.02	✓

S=1/500^M



座標法面積計算 ()

621-1

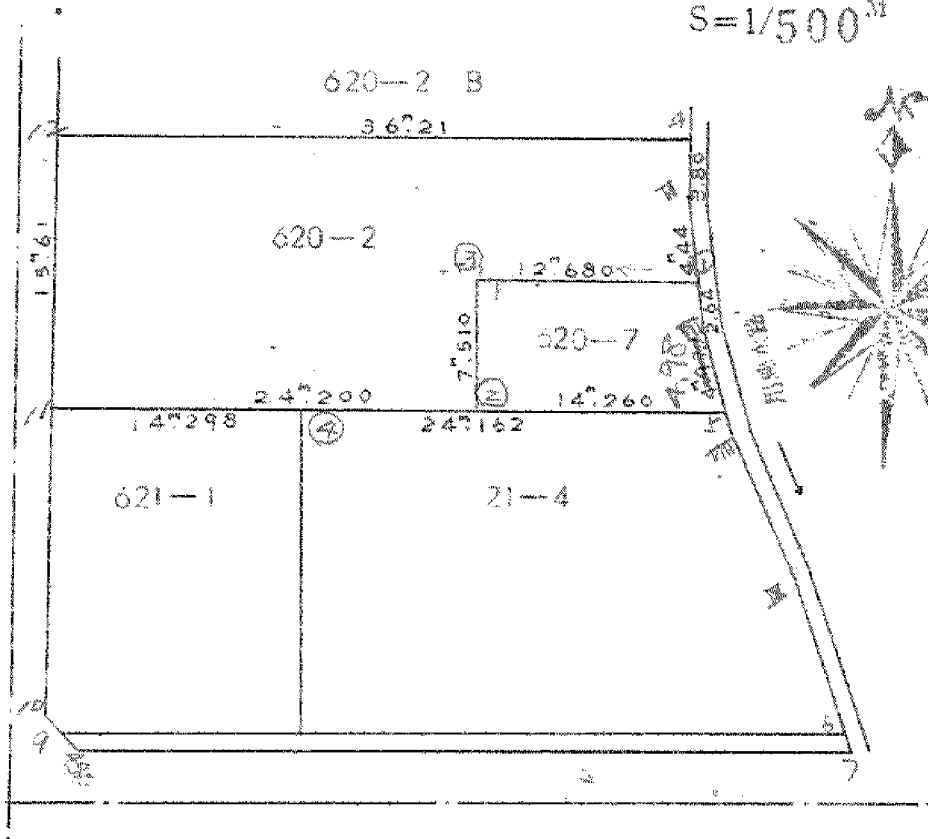
測点	X	Δx	Y	Δy	(+) F ₁ Δx · Δy	(-) F ₂ Δx · Δy
	152.000		38.000			
11	-34.330		-586.543			
		-2.116		-1158.940	2452.317040	
④	-36.446		-572.397			
		-18.443		-1146.989	21153.918127	
⑤	-54.889		-574.592			
		+1.944		-1162.907		2260.691208
9	-52.945		-588.315			
		+1.130		-1177.472		1330.543360
10	-51.815		-589.157			
		+17.485		-1175.700		20557.114500
	-34.330		-586.543			
Σ =					23606.235167	24148.349068
F = (F ₁) - (F ₂) =						542.113901
計算者					F / 2 =	271.056950
点検査					× 0.9025 =	244.061

座標法面積計算 ()

621-4

測点	X	Δx	Y	Δy	(+) F ₁ Δx・Δy	(-) F ₂ Δx・Δy
	152. ^k 000		38. ^k 000			
④	-36.446'		-572.397'			
		-3.573		-1120.898	4004.968554	
⑤	-40.019'		-548.501'			
		-1.510		-1096.845	1656.235950	
Ⅷ	-41.529'		-548.344'			
		-8.445		-1093.834	9237.428130	
Ⅷ	-49.974'		-545.490'			
		-9.276		-1089.297	10104.318972	
6	-59.250'		-543.807'			
		+4.361		-1118.399		4877.338039
⑤	-54.889'		-574.592'			
		+18.443		-1146.989		21153.918127
④	-36.446'		-572.397'			
Σ =					25002,951606	26031,256166'
F = (F ₁) ~ (F ₂) =						1028,304560
計算者	F / 2 =					514,152280'
点検者	× 0.3025 =					分筆後の座標なし

S=1/500^{MF}



座標法面積計算 ()

620-2

測点	X	Δx	Y	Δy	(+) F ₁ Δx · Δy	(-) F ₂ Δx · Δy
	152.000		38.000			
12	-18.886		-584.233			
		-5.356		-1132.650	6066.473400	
4	-24.242		-548.417			
		-2.736		-1097.542	4100.416912	
11	-27.978		-549.125			
		-4.439		-1098.182	4874.829898	
①	-32.417		-549.057			
		+1.948		-1110.643		2163.532564
③	-30.469		-561.586			
		+7.441		-1124.190	8365.097790	
②	-37.910		-562.604			
		+2.580		-1149.147		4113.946260
11	-34.330		-586.543			
		+15.444		-1170.776		18081.464544
12	-18.886		-584.233			
$\bar{Z} =$					23406.818000	24358.943368
$F = (F_1) \sim (F_2) =$						952.125368
計算書					$F / 2 =$	476.062684
点檢者					$\times 0.9025 =$	

座標法面積計算 ()

620-7

測点	X	Δx	Y	Δy	(+) F ₁ Δx · Δy	(-) F ₂ Δx · Δy
	152. ^k 000		38. ^k 000			
①	-32.417'		-549.057'			
		-2.649		-1098.073	2908.795377	
Ⅱ	-35.066'		-549.016'			
		-4.953		-1097.517	5436.001701	
Ⅲ	-40.019'		-548.501'			
		+2.109		-1111.105		2343.320445
②	-37.910'		-562.604'			
		+7.441		-1124.190		8365.097790
③	-30.469'		-561.586'			
		-1.948		-1110.643	2163.532564	
④	-32.417'		-549.057'			
Σ =					10508.329642	10708.418235
F = (F ₁) ~ (F ₂) =						200.088593
計算者					F / 2 =	100.044296
点検者					× 0.3025 =	