

BLOCK NO. 15-2

画地略図

工区

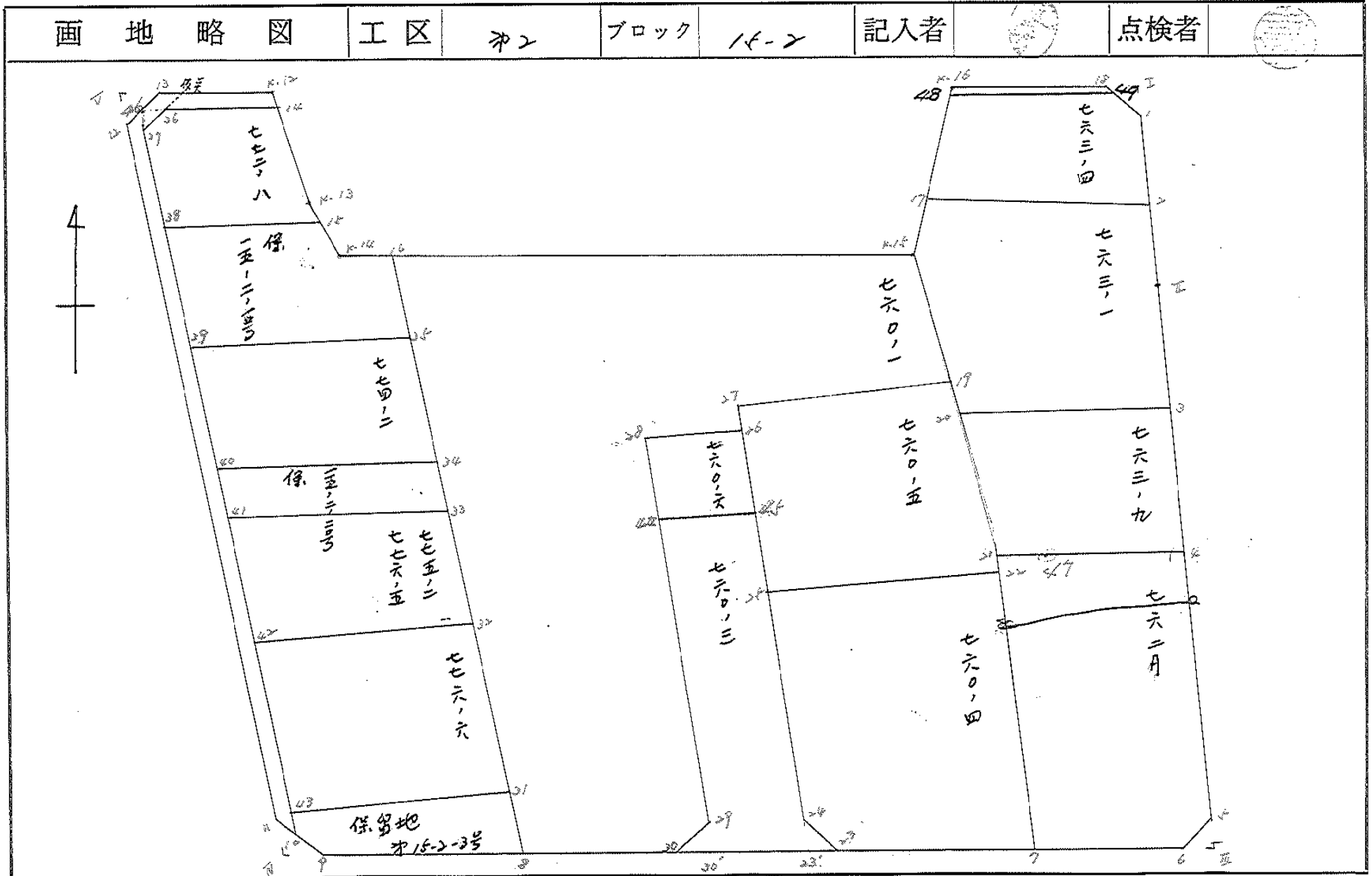
第2

ブロック

15-2

記入者

点検者



面積計算書

工区

第2

ブロック

15-2

計算者

精算者

備考

全体

点	①	②	③	④	⑤	⑥	③ × ⑤		② × ⑥									
	X	X-(定数)	X _{n-1} -X _{n+1}	Y	Y-(定数)	Y _{n-1} -Y _{n+1}	+	-	+	-								
I	-151 906.937	-251.800 106.937	+ 19.943	-38 704.497	-38.700 4.497	- 2.308			89.693	246.210	596							
II	904.622	124.622	+ 69.299	704.205	4.205	- 2.040			291.402	295.254	228	880						
5	976.236	176.236	+ 53.278	702.457	2.457	+ 0.156			130.904	746		27.492	816					
6	977.900	177.900	- 9.810	704.361	4.361	+ 69.347	42.781	4110				12336	931700					
9	966.426	166.426	- 14.973	771.804	41.804	+ 70.245	1075.121	292				11680	594370					
11	962.927	162.927	- 67.506	774.606	74.606	- 0.507	5036.552	636				82.603	989					
12	998.920	98.920	- 66.622	771.297	71.297	- 6.440	4749.948	746				637.044	800					
13	896.305	86.305	- 1.846	768.166	68.166	- 9.138	125.844	436				880.035	080					
K12	897.074	97.074	+ 17.146	762.159	62.159	- 10.928			1065.778	214	1060.924	672						
K13	913.451	113.451	+ 23.227	757.238	57.238	- 7.367			1329.467	026	835.793	517						
K14	920.301	120.301	+ 10.986	754.792	54.792	- 35.135			601.944	912	4226.775	635						
K15	924.437	124.437	- 17.147	722.103	22.103	- 36.536	379.000	141				4546.439	232					
K16	903.154	103.154	- 19.758	718.256	18.256	- 15.590	360.702	028				1608.170	860					
18	904.679	104.679	+ 3.783	706.513	6.513	- 13.759			24.628	679	1440.279	361						
							11,769	740	697	2533	818	947	15818	996	632	24054	918	486
							8,235	921	854				8235	921	854			
							V ₂ = 4117.96											

面地計算

面積計算書

工区

※2

ブロック

15-2

計算者



測定者



備考

763-4, 763-1

14101-1

14101-1

点	①	②	③	④	⑤	⑥	③ × ⑤		② × ⑥	
	X	X-(定数)	X _{n-1} -X _{n+1}	Y	Y-(定数)	Y _{n-1} -Y _{n+1}	+	-	+	-
1	-151 906.937	-151.900 6.937	+ 13.108	-39 704.497	-39.700 4.497	- 1.795			58.946676	12.451915
2	919.244	18.244	+ 9.104	704.310	4.310	+ 16.088			39.238240	293.509472
17	916.041	16.041	- 14.696	720.585	20.585	+ 14.017	302.517160			226.846697
18	903.548	3.548	- 10.905	718.327	18.327	- 14.480	199.955935			51.375040
19	905.136	5.136	+ 3.389	706.105	6.105	- 13.830			20.689845	71.030880
							502.373295	118.870761	134.857835	518.356169
							383.498334			383.498334
							$\frac{1}{2} = 191.74$			
2	-151 919.244	-151.900 18.244	+ 8.581	-39 704.310	-39.700 4.310	- 16.380			36.986110	298.836720
II	924.622	24.622	+ 23.190	704.205	4.205	- 0.674			97.513950	16.595228
3	941.434	41.434	+ 14.533	703.636	3.636	+ 15.088			52.841988	625.156192
20	939.155	39.155	- 16.997	719.293	19.293	+ 19.467	327.923121			723.075385
K15	924.437	24.437	- 23.114	722.103	22.103	+ 1.292	510.889702			31.572604
17	916.041	16.041	- 6.193	720.585	20.585	- 17.793	127.482905			285.417513
							966.294768	187.340048	600.949461	1279.304181
							778.954720			778.954720
							$\frac{1}{2} = 389.47$			

面積計算書

工区

#2

ブロック

15-2

計算者



精算者



備考

763-9, 762A

15-2

15-1A

点	①	②	③	④	⑤	⑥	③ × ⑤		② × ⑥	
	X	X-(定数)	X _{n-1} -X _{n+1}	Y	Y-(定数)	Y _{n-1} -Y _{n+1}	+	-	+	-
	-151.	-151.900.		-39.	-39.700.					
3	941.434	41.434	+ 13.664	703.636	3.636	- 16.043		49.682304		664.725662
4	952.819	52.819	+ 9.995	703.250	3.250	+ 4.859		32.483750		256.647521
47	951.429	51.429	- 2.182	708.495	8.495	+ 13.811	18.536090			710.285919
21	950.637	50.637	- 12.274	717.061	17.061	+ 10.798	209.406714			546.778326
20	939.155	39.155	- 9.203	719.293	19.293	- 13.425	177.553479			525.655875
							405.496283	82.166054	1190.381597	1513.711766
							323.330229			323.330229
							$\frac{1}{2}$	161.66-		
4	-151.	-151.950.		-39.	-39.700					
4	952.819	2.819	+ 24.807	703.250	3.250	- 6.038		80.622750	17.021122	
5	976.236	26.236	+ 26.081	702.457	2.457	+ 1.111		61.624017		29.148196
6	977.900	27.900	- 0.366	704.361	4.361	+ 13.833	1.596126			385.940700
7	975.870	25.870	- 27.263	716.290	16.290	+ 12.700	444.114270			378.549000
21	950.637	0.637	- 26.441	717.061	17.061	- 7.795	416.987901			4.965415
47	951.429	1.429	+ 2.182	708.495	8.495	- 13.811		18.536090	19.735919	
							862.698297	160.792857	41.722456	743.637896
							701.915440			701.915440
							$\frac{1}{2}$	350.95		

分筆あり

面積計算書

工区

木

ブロック

15-2

計算者



検算者



備考

760-1

点	①	②	③	④	⑤	⑥	③ × ⑤		② × ⑥	
	X	X-(定数)	X _{n-1} -X _{n+1}	Y	Y-(定数)	Y _{n-1} -Y _{n+1}	+	-	+	-
K.15	-151, 924.437	-151.900, 24.437	+ 15.860	-38, 722.103	-38.700, 22.103	- 29.724			350.553580	726.365388
19	936.836	36.836	+ 11.823	719.736	19.736	+ 9.142			233.338728	336.714712
27	936.260	36.260	+ 1.244	731.245	31.245	+ 11.602			38.868780	420.688520
26	938.080	38.080	+ 1.616	731.338	31.338	+ 4.088			50.642208	155.671040
28	937.876	37.876	+ 32.254	735.333	35.333	+ 5.653			1139.630582	214.113028
29	970.334	70.334	+ 34.120	736.991	36.991	+ 3.732			1262.132920	262.486488
30	971.996	71.996	- 2.531	739.065	39.065	+ 14.963	20.743515			1077.276148
8	969.803	69.803	- 51.020	751.954	51.954	+ 10.395	2650.693080			725.602185
16	920.976	20.976	- 45.366	749.460	49.460	- 29.851	2243.802360			626.154576
							4915.238955	3075.166798	1252.519464	3192.592211
							1840.072157			1840.072157
							$\frac{V}{2}$ 920.03			

面積計算書

工区

水2

ブロック

15-2

計算者



測量者



備考

760-5, 760-4

15-2

水2

点	①	②	③	④	⑤	⑥	③ × ⑤		② × ⑥	
	X	X-(定数)	X _{n-1} -X _{n+1}	Y	Y-(定数)	Y _{n-1} -Y _{n+1}	+	-	+	-
19	936.836	6.836	+14.377	719.736	9.736	-14.184		139.974472	96.961824	
21	950.637	20.637	+15.036	717.061	7.061	-2.713		106.169196	55.988181	
22	951.872	21.872	+14.53	717.023	7.023	+14.941		3.181419		326.789152
25	951.090	21.090	-15.612	732.002	22.002	+14.222	343.495224			299.941980
27	936.260	6.260	-14.254	731.245	21.245	-12.266	302.826230		76.785160	
							646.3214542	49.325087	229.735165	626.731592
							396.996367			396.996367
							$\frac{1}{2} = 1.9849$			
22	951.872	1.872	+24.780	717.023	7.023	-15.712		174.029940	29.412864	
7	975.870	25.870	+21.470	716.290	6.290	+14.128		135.046300		365.491360
23	973.342	23.342	-4.860	731.151	21.151	+16.730	102.792860			290.511660
24	971.010	21.010	-22.252	733.020	23.020	+0.851	512.241040			17979.510
25	951.090	1.090	-19.138	732.002	22.002	-15.997	421.074276		17.436730	
							1036.109176	209.076240	46.849594	773.882590
							727.032936			727.032936
							$\frac{1}{2} = 363.51$			

面積計算書

工区

★ 2

ブロック

15-2

計算者



精算者



備考

760-6, 760-3

七六〇一六

七六〇一七

点	①	②	③	④	⑤	⑥	③ × ⑤		② × ⑥	
	X	X-(定数)	X _{n-1} -X _{n+1}	Y	Y-(定数)	Y _{n-1} -Y _{n+1}	+	-	+	-
26	-151. 938.080	-151.930 8.080	+ 5.696	-38. 731.338	-38.731. 0.338	- 3.714		1.925248	30.009120	
45	943.572	13.572	+ 5.289	731.419	0.619	+ 4.276		3.273891		58.033872
44	943.369	13.369	- 5.696	735.614	4.614	+ 3.714	26.281344			49.652466
28	937.876	7.876	- 5.289	735.333	4.333	- 4.276	22.917237			33.677776
								49.198581	5.199139	63.686896
								43.999402		43.999442
								$\frac{1}{2} = 21.99$		
45	-151. 943.572	-151.940 3.572	+ 27.641	-38. 731.619	-38.730. 1.619	- 2.594		44.750779	9.265768	
24	971.010	31.010	+ 29.770	733.020	3.020	- 0.468		89.805400	14.512680	
23	973.342	33.342	+ 0.986	731.151	1.151	+ 6.045		1.134886		201.552390
30	971.996	31.996	- 3.008	739.065	9.065	+ 5.840	27.267520			186.856640
29	970.334	30.334	- 28.627	736.991	6.991	- 3.451	200.131257			104.682634
44	943.369	3.369	- 26.762	735.614	5.614	- 5.372	150.241868			18.098268
								377.640745	35.791065	146.559350
								241.849680		388.409070
								$\frac{1}{2} = 120.92$		241.849680

面積計算書

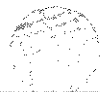
工区

井 2

ブロック

15-2

計算者



積算者



備考

772-8, 保15-2-1号

ハ
ー
ハ
ハ

未

点	①	②	③	④	⑤	⑥	③	×	⑤	②	×	⑥
	X	X-(定数)	X _{n-1} -X _{n+1}	Y	Y-(定数)	Y _{n-1} -Y _{n+1}	+		-	+		-
12	-151 898.647	-151.890 8.647	+ 15.575	-38 761.686	-38.750 11.686	- 10.469				182.009450		90.525443
K.13	913.451	23.451	+ 16.752	757.238	7.238	- 5.143				121.250976		120.608493
15	915.399	25.399	+ 0.164	756.543	6.543	+ 13.317				1.073052		338.238483
38	913.615	23.615	- 15.747	770.555	20.555	+ 13.290	323.679585					313.843350
37	899.652	9.652	- 15.739	769.833	19.833	- 2.848	312.151587					27.488896
36	897.876	7.876	- 1.005	767.707	17.707	- 8.147	17.795535					64.165772
										653.626707		304.333478
										302.788604		652.081832
										349.293229		349.293229
										1/2 = 174.64		
15	-151 915.399	-151.910 5.399	+ 6.686	-38 756.543	-38.700 56.543	- 15.763				378.046498		85.104437
K.14	920.301	10.301	+ 5.577	754.792	54.577	- 7.083				305.574986		172.961983
16	920.976	10.976	+ 6.434	749.460	49.460	- 5.038				318.225640		55.297088
35	926.735	16.735	+ 4.266	749.754	49.754	+ 21.696				212.250564		263.082560
39	925.242	15.242	- 13.120	771.156	71.156	+ 20.801	933.566720					317.048842
38	913.615	3.615	- 9.843	770.555	20.555	- 14.613	694.072865					52.825995
										1628.039585		14.097686
										266.189503		680.131402
										413.941899		413.941899

1/2 = 206.97

面積計算書

工区

#2

ブロック

15-2

計算者



精算者



備考

774-2, 保-15-2-2号

AUB-11

22

点	①	②	③	④	⑤	⑥	③ × ⑤		② × ⑥	
	X	X-(定数)	Xn-1-Xn+1	Y	Y-(定数)	Yn-1-Yn+1	+	-	+	-
	-151	-151.920			-38.700					
35	926.735	6.735	+ 13.564	38,749.754	49.754	- 20.785			674.863256	139.986975
34	938.806	18.806	+ 10.570	750.371	50.371	+ 22.025			532.421470	414.202150
40	937.305	17.305	- 13.564	771.779	71.779	+ 20.785			973.610356	359.634425
39	925.242	5.242	- 10.570	771.156	71.156	- 22.025			752.118920	115.454050
									175.729276	1207.284726
									518.444550	518.444550
									$\frac{1}{2} = 259.221$	
	-151	-151.930			-38.750					
34	938.806	8.806	+ 3.860	750.371	0.371	- 21.288			1.432060	187.462128
33	941.165	11.165	+ 0.859	750.491	0.491	+ 21.530			0.421769	240.382450
41	939.665	9.665	- 3.860	771.901	21.901	+ 21.288			84.597860	205.749520
40	937.305	7.305	- 0.859	771.779	21.779	- 21.530			18.708161	157.276650
									103.246021	1.853.829
									344.788778	446.130970
									101.392192	101.392192
									$\frac{1}{2} = 50.69$	

面積計算書

工区

第 2

ブロック

15-2

計算者



精算者



備考

775-2
776-5,

776-6

南側

北側

点	①	②	③	④	⑤	⑥	③ × ⑤		② × ⑥	
	X	X-(定数)	X _{n-1} -X _{n+1}	Y	Y-(定数)	Y _{n-1} -Y _{n+1}	+	-	+	-
32	-151. 952.015	-151.900 52.015	+ 10.081	-38. 751.045	-38.750 1.045	+ 22.009			10.534645	1144.798135
42	951.246	51.246	- 12.350	772.500	22.500	+ 20.856	277.875000			1068.796576
41	938.665	39.665	- 10.081	771.901	21.901	- 22.009	220.793981			872.986985
33	941.165	41.165	+ 12.350	750.491	0.491	- 20.856			6.063850	858.537240
							498.658991	16.598495	1731.524225	2213.584711
							482.060486			482.060486
								1/2	241.03	
32	-151. 952.015	-151.450 2.015	+ 12.956	-38. 751.045	-38.750 1.045	- 20.832			13.539020	41.976480
31	964.202	14.202	+ 11.641	751.668	1.668	+ 22.097			19.417189	213.821594
43	963.656	13.656	- 12.956	773.142	23.142	+ 20.832	299.827752			284.481792
42	951.246	1.246	- 11.641	772.500	22.500	- 22.097	261.922500			27.532962
							541.750252	32.956208	69.509342	598.307386
							528.794044			528.794044
								1/2	264.39	

面積計算書

工
区

#2

ブ
ロ
ック

15-2

計
算
者



鑑
定
者



備
考

保留地第15-2-3号

点	①	②	③	④	⑤	⑥	③ × ⑤		② × ⑥	
	X	X-(定数)	X _{n-1} -X _{n+1}	Y	Y-(定数)	Y _{n-1} -Y _{n+1}	+	-	+	-
31	964.202	4.202	6.147	751.668	1.668	21.188		10.253196	89.031976	
8	969.803	9.803	2.224	751.954	1.954	20.136		4.345696	197.393208	
9	966.426	6.426	5.115	771.904	21.804	21.241	111.527460		136.494666	
10	964.688	4.688	2.770	773.195	23.195	1.338	64.250150		6.272544	
43	963.656	3.656	0.486	773.142	23.142	21.527	11.247012		78.702712	
								197.024622	14.598892	167.734688
								172.425730		172.425730
								1/2 = 86.21		

面積計算書

工
区

相

ブ
ロ
ック

15-2

計
算
者



精
算
者



備
考

街路

点	①	②	③	④	⑤	⑥	⑦ × ⑧		⑨ × ⑩	
	X	X-(定数)	X _{n-1} -X _{n+1}	Y	Y-(定数)	Y _{n-1} -Y _{n+1}	+	-	+	-
18	-251 904.679	-757.900 4.679	+ 1.982	-38. 706.513	-38.700 6.513	- 12.151			12.908766	56.854529
49	905.136	5.136	- 1.131	706.105	6.105	+ 11.814	8.904755			60.676704
48	903.548	3.548	- 1.982	719.327	19.327	+ 12.151	36.324114			43.111708
K16	903.154	3.154	+ 1.131	718.256	18.256	- 11.814		20.647536	37.261356	
							43.228869	33.556302	94.115895	103.798457
							9.672567			9.672567
								1/2 = 4.836		
								4.84		

面積計算書

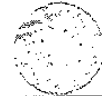
工区

第2

ブロック

15-2

計算者



精算者



備考

水路第9号線

点	①	②	③	④	⑤	⑥	③ × ⑤		② × ⑥	
	X	X-(定数)	X _{n-1} -X _{n+1}	Y	Y-(定数)	Y _{n-1} -Y _{n+1}	+	-	+	-
k.12	^{-151.} 897.074	^{-151.800} 97.074	+ 2.342	^{-38.} 762.159	^{-38.760} 2.159	- 6.480			5.056.378	639.039.520
14	898.647	98.647	+ 0.802	761.676	1.686	+ 5.548			1.352.172	547.293.556
26	897.876	97.876	+ 1.005	767.707	7.707	+ 9.147			7.745.535	797.395.772
27	899.652	99.652	+ 66.812	769.833	9.833	+ 5.488			656.962.396	546.890.176
10	964.688	164.688	+ 63.275	773.195	13.195	+ 4.773			834.913.625	796.055.824
11	962.927	162.927	- 65.768	774.606	14.606	- 1.898	960.607.408		309.235.446	
12	898.920	98.920	- 66.622	771.297	11.297	- 6.440	762.628.734		637.044.900	
13	896.305	96.305	- 1.946	768.166	8.166	- 9.138	15.074.436		880.035.090	
							1727.710.578	15.06.030.106	2465.354.856	2677.625.328
							222.280.472			222.280.472
							$\frac{1}{2}$ 111.14			

計年月日

計算者



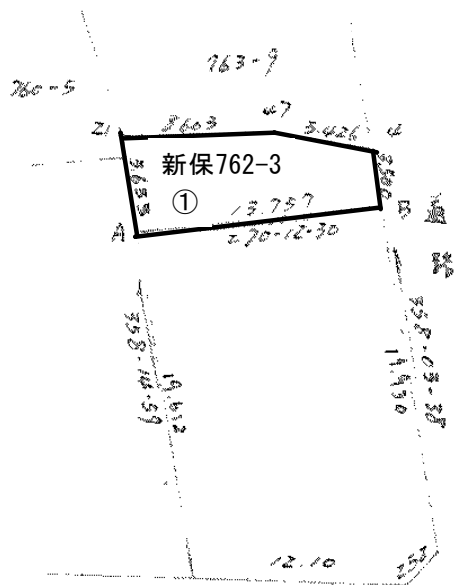
檢査者



B.NO. 15-2

各筆面積計算書

地番	算式	隅切	地積	摘要
1	763-4		191.74	
2	763-1		389.47	
3	763-9		161.66	
4	762-A		350.95	
5	760-1		920.03	
6	760-5		198.49	
7	760-4		363.81	
8	760-6		21.99	
9	760-3		120.92	
10	772-8		174.64	
11	保15-2-1号		206.97	
12	774-2		259.22	換地地積
13	保15-2-2号		50.69	3658.06
14	776-5 775-2		241.03	公共用地
15	776-6		264.39	115.98
16	保留地15-2-3号		86.21	保留地
			4001.91	343.87
	街路	4.84		
	北路9号線	111.14		
		115.98		
	合計		4117.89	
	全体		4117.96	
	差		0.07	

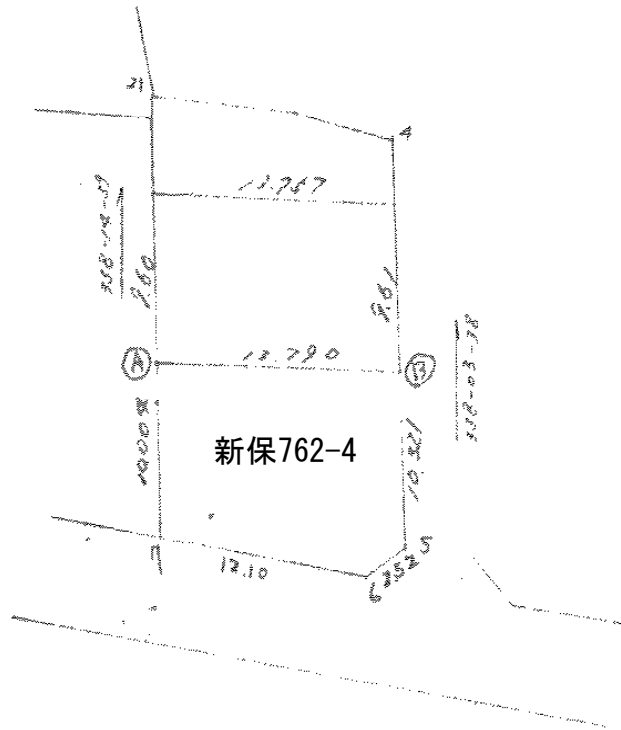


①	66.6247 m ²	20.1540 坪
-151		-38
A	956.267	716.889
B	956.317	703.132
4	952.819	703.250
47	951.429	708.495
-151		-38
Z1	950.637	717.061

面積計算表及び二点間距離

岡山市新保字法宮 762~3

No	D	X _n	X _{n+1} X _{n-1}	Y _n	Y _{n+1} Y _{n-1}	(2) × (3)		(1) × (4)	
		(1)	(2)	(3)	(4)	f	g	f	g
K 47		-151 951.429		-38 708.495					
4	3.500	952.819	4.888	707.250	4.363	3437.48600			5107.768277
B	13.757	956.317	3.448	703.132	12.639	2424.399136		13043.207563	
A	5.633	956.267	5.680	716.889	13.729		4071.927520	13319.843043	
K 21	8.603	950.637	4.838	717.061	8.394		3467.141118		7979.646978
47	5.426	951.429	2.182	708.495	13.811	1545.93609			13140.185919
		-151 952.819		-38 703.250					
						707.8			
						7047.821226	7541.070638	26363.050606	26227.801194
						133.249412		133.249412	
						66.624706 m ²			
						20.153974 m			



新保762-4

NO.	NAME	CODE	X	Y	D X	D Y	X * DY	Y * DX
①			-151965.870	-38716.596	-9.950	-13.484	2049107.791080	385230.130200
②			-151965.920	-38702.806	10.366	-14.139	2148646.142880	-401193.286996
③			-151976.236	-38702.457	11.980	1.555	-236323.046980	-463655.434860
④			-151977.900	-38704.361	-0.366	13.833	-2102310.290700	14165.796126
⑤			-151975.870	-38716.290	-12.030	12.235	-1859424.769450	465756.968700

コウケイ -304.173170 304.173170

ハイ メッセキ 304.173170

メッセキ 152.086585

ツホ"スウ 46.006191