

BLOCK NO. 30

画地略図

工区

第2

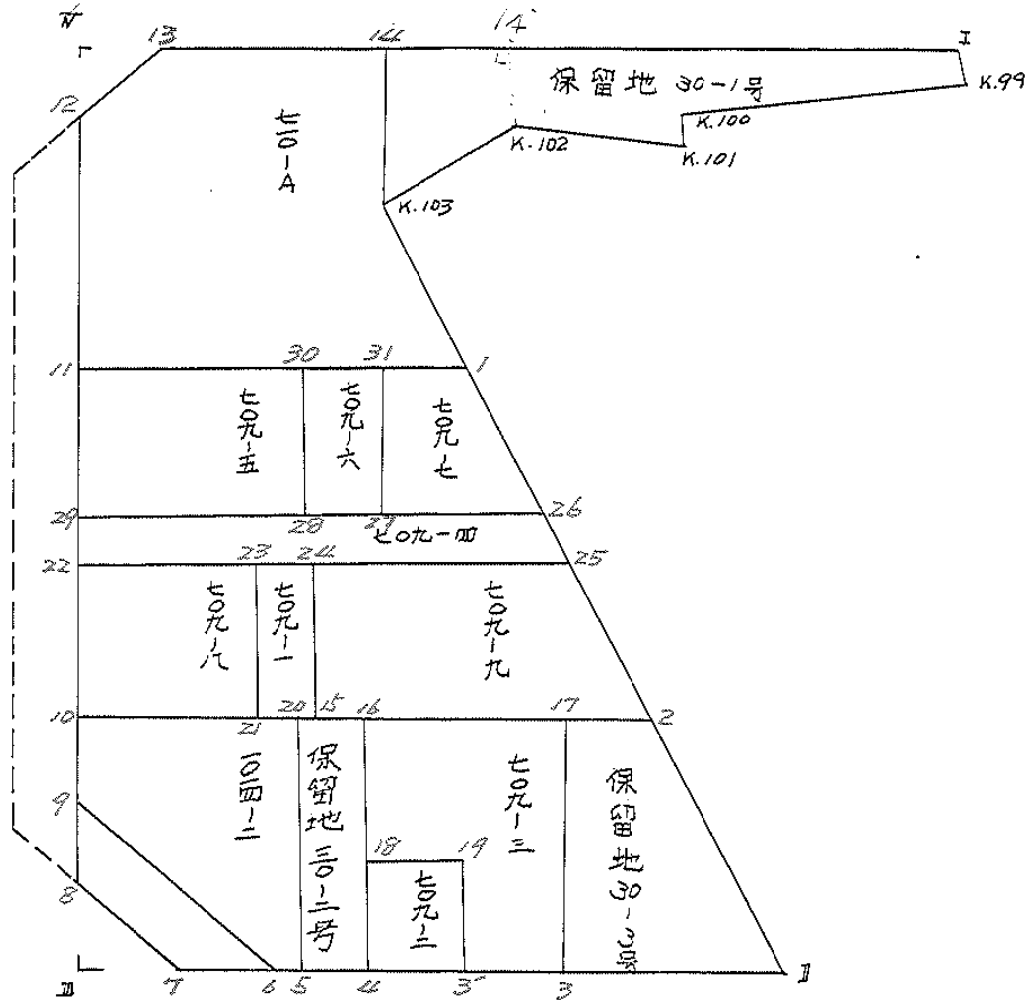
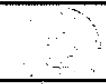
ブロック

30

記入者



点検者



面積計算書						工区	ブロック	計算者	精算者	備考
						※2	30			全体
点	①	②	③	④	⑤	⑥	③ × ⑤	② × ⑥		
	X	X-(定数)	X _{n-1} -X _{n+1}	Y	Y-(定数)	Y _{n-1} -Y _{n+1}	-	-		
	-152.	-38,200-		-38.	-38,800-					
I	234.551	34.551 +	6.955	857.858	57.858	-69.101		402.402390 = 2387.508651		
K.99	235.760	35.760 +	2.887	857.730	57.730	+15.949		166.666510 = 570.336240		
K.100	237.438	37.438 +	3.394	873.807	73.807	+15.950		250.500958 = 597.136100		
K.101	239.154	39.154 -	1.707	873.680	73.680	+12.633	125.771760	494.632482		
K.102	235.731	35.731 +	6.457	886.440	86.440	+23.603		558.143080 = 843.358793		
K.103	245.611	45.611 +	78.961	897.283	97.283	+5.621		7681.562963 = 256.399431		
II	314.692	114.692 +	67.077	892.061	92.061	+36.531		6175.175697 = 489.813452		
7	312.688	112.688 -	7.226	933.818	133.818	+46.336	966.939964	5221.511168		
8	307.466	107.466 -	79.315	928.397	138.397	-1.586	10976.958055	170.441976		
12	233.373	33.373 -	78.661	932.228	132.228	-11.566	10401.186703	385.992118		
13	228.805	28.805 +	1.178	926.831	126.831	-74.370		149.406918 = 2142.227850		
							22470.856487	15383.858516 = 5086.169695 = 12173.167666		
							7086.997971	7086.997971		
							1/2 3543.49			

面地計算

面積計算書

工区

第2

ブロック

30

計算者



計算者



備考

保留地 30-1号

点	①	②	③	④	⑤	⑥	③ × ⑤		② × ⑥	
	X	X-(定数)	X _{n-1} -X _{n+1}	Y	Y-(定数)	Y _{n-1} -Y _{n+1}	+	-	+	-
I	-112	-152,200		-38	-38,800					
K.99	234.551	34.551	+ 4.392	857.858	57.858	- 38.337		254.112336	-1324.581687	
K.100	235.760	35.760	+ 2.887	857.730	57.730	+ 15.949		156.666510		570.336240
K.101	237.438	37.438	+ 3.394	873.807	73.807	+ 15.950		250.500958		597.136100
K.102	239.154	39.154	- 1.707	873.680	73.680	+ 12.633	125.771760			294.632082
K.103	235.731	35.731	+ 6.457	886.440	86.440	+ 23.607		558.14308		843.358793
K.103	245.611	45.611	- 4.363	897.283	97.283	+ 9.627	424.445729			439.097097
K	231.368	31.368	- 11.060	896.067	96.067	- 39.425	1062.501020		1236.683400	
							1612.718509	229.422884	2561.265087	2944.160712
							383.295625			383.295625
								1/2	191.647	

面積計算書

工区

第2

ブロック

30

計算者



精算者



備考

710
709-A, 709-7

1001-A

1001-B

点	①	②	③	④	⑤	⑥	③ × ⑤		② × ⑥	
	X	X-(定数)	X _{n-1} -X _{n+1}	Y	Y-(定数)	Y _{n-1} -Y _{n+1}	+	-	+	-
	-152	-152.200		-38	-38.800					
14	231.368	31.368	+16.806	896.067	96.067	-29.508		1611.502022	926.861664	
4.103	245.611	45.611	+30.943	897.283	97.283	-0.046		3010.227869	2.098106	
1	262.311	62.311	+13.373	896.021	96.021	+37.289		1297.531773		2311.052679
11	259.124	69.124	-28.938	934.372	134.372	+36.207	3888.456936			2140.702668
12	233.373	33.373	-30.319	932.228	132.228	-7.541	4009.020732		251.165793	
13	228.805	28.805	-2.005	926.831	126.831	-56.161	2546.16155		1041.617605	
							8151.773823	5977.241644	2222.241318	44151.755247
							2229.512179			2229.512179
							1/2 = 1114.75			
	-152	-152.260		-38	-38.890					
1	262.311	2.311	+16.784	896.021	6.021	-8.720		101.056444	20.151920	
26	278.472	18.472	+15.326	894.799	4.799	+8.821		73.549470		162.941512
27	277.637	17.637	-16.784	904.842	14.842	+8.720	249.108128			153.794640
31	261.688	1.688	-15.326	903.519	13.519	-8.821	207.192190		14.889808	
							456.300322	170.625938	35.041768	316.736152
							281.694384			281.694384
							1/2 = 140.94			

面積計算書

工区

第2

ブロック

30

計算者



精算者



備考

709-6, 709-5

七〇九一六

七〇九一五

点	①	②	③	④	⑤	⑥	③ × ③		② × ⑥		
	X	X-(定数)	X _{n-1} -X _{n+1}	Y	Y-(定数)	Y _{n-1} -Y _{n+1}	+	-	+	-	
31	-152.261 261.688	-152.260 1.688	+ 16.804	-38.900 903.519	-38.900 3.519	- 8.963			59.133276	15.129544	
27	277.637	17.637	+ 15.093	904.842	4.842	+ 11.611			73.080306		204.783207
28	276.781	16.781	- 16.804	915.130	15.130	+ 8.963	252.244520				150.408103
30	260.833	0.833	- 15.093	913.805	13.805	11.611	208.358865			9.471.963	
							462.603385	132.213592	24.801507	355.191310	
							330.389803				330.389803
								1/2 165.19			
30	-152.261 260.833	-152.200 60.833	+ 17.657	-38.910 913.805	-38.910 3.805	- 19.242			67.184885	1170.548586	
28	276.781	76.781	+ 14.237	915.130	5.130	+ 21.895			73.035810		1681.119995
29	275.070	75.070	- 17.657	935.700	25.700	+ 19.242	453.784900				1444.496940
11	259.124	59.124	- 14.237	934.372	24.372	21.895	346.884164			1294.519980	
							800.769064	140.220695	2465.062566	3125.616935	
							660.548369				660.548369
								1/2 330.27			

分筆後の座標なし

面積計算書

工区

※2

ブロック

30

計算者



計算者



備考

709-4, 709-9

709-4

709-9

点	①	②	③	④	⑤	⑥	③ × ⑤		② × ⑤	
	X	X-(定数)	X _{n-1} -X _{n+1}	Y	Y-(定数)	Y _{n-1} -Y _{n+1}	+	-	+	-
26	-152 278.472	-152.270 8.472	+ 7.443	-38. 896.799	-38.800. 94.799	- 41.207			705.588 957	349.105 704
25	282.513	12.513	+ 0.586	894.493	94.493	+ 41.233			55.372 898	515.948 529
22	279.058	9.058	- 7.443	936.032	136.032	+ 41.207	1012.486 176			373.253 006
29	275.070	5.070	- 0.586	935.700	135.700	- 41.233	79.520 200			209.051 310
									1092.006 376	760.961 855
									558.157 014	889.201 535
									331.044 521	331.044 521
									1/2 = 165.52	
25	-152 282.513	-152.280 2.513	+ 18.090	-38. 894.493	-38.890. 4.493	- 29.115			81.278 370	73.165 995
2	298.280	18.280	+ 14.304	893.302	3.302	+ 29.307			47.231 808	535.731 960
15	296.817	16.817	- 18.090	923.800	33.800	+ 29.115	611.442 000			489.626 955
24	280.190	0.190	- 14.304	922.417	32.417	- 29.307	463.692 768			5.568 330
									1075.134 768	28.510 178
									78.734 325	1025.358 915
									946.624 590	946.624 590
									1/2 = 473.312 295	

面積計算書

工区

才2

ブロック

30

計算者



精算者



備考

709-1, 709-8

709-1

709-8

点	①	②	③	④	⑤	⑥	③ × ⑤		② × ⑥					
	X	X-(定数)	X _{n-1} -X _{n+1}	Y	Y-(定数)	Y _{n-1} -Y _{n+1}	+	-	+	-				
24	-152 280.190	-152.200 80.190	+ 16.957	922.417	2.417	- 2.546			40.97540	204.163740				
15	296.817	96.817	+ 16.438	923.800	3.800	+ 5.324			62.464400	515.453708				
21	296.628	96.628	- 16.953	927.741	7.741	+ 2.546	131233	173		246.014888				
23	279.864	79.864	- 16.438	926.346	6.346	5.324	104.315	548		425.195936				
							235.548	721	102.439	801	629.359	676	761.468	596
							132.108	920					132.108	920
							1/2 = 66.05							
23	-152 279.864	-152.200 79.864	+ 17.570	926.346	6.346	- 8.291			111.499	220	662.152	424		
21	296.628	96.628	+ 16.298	927.741	7.741	+ 11.110			126.162	818			1073.537	080
10	296.162	96.162	- 17.570	937.456	17.456	+ 8.291	206.701	920			997.279	142		
22	279.058	79.058	- 16.298	936.032	16.032	- 11.110	261.289	536			878.374	380		
							567.991	456	237.662	038	1540.486	804	1870.816	222
							330.329	418					330.329	418
							1/2 = 165.16							

面積計算書

工
区

第2

ブロック

30

計算者



精算者



備考

保留地
00-08
1709-3

水

七〇七〇三

点	①	②	③	④	⑤	⑥	⑦ × ⑧		⑨ × ⑩		
	X	X-(定数)	X _{n-1} -X _{n+1}	Y	Y-(定数)	Y _{n-1} -Y _{n+1}	+	-	+	-	
Z	-152,298,290	-152,200 98,280	+ 16,817	38 892,302	-38,900 93,302	- 9,597					
II	314,692	114,692	+ 15,914	892,061	92,061	+ 9,130					1047,137,860
3	314,194	114,194	- 16,913	902,432	102,432	+ 9,597					1095,919,818
17	297,879	97,879	- 15,914	901,658	101,658	- 9,130					893,635,270
											3339,974,629
											3073,745,280
											1836,828,430
											2143,257,778
											306,229,348
											306,229,348
											1/2 = 153,11
17	-152 297,879	-152,200 97,879	+ 17,243	-38 901,658	-38,900 1,658	- 18,573					29,578,894
3	314,194	114,194	+ 15,736	902,432	2,432	+ 12,856					1817,906,667
3'	313,615	113,615	- 8,754	914,514	14,514	+ 11,696					38,269,952
19	305,440	105,440	- 8,524	914,128	14,128	+ 6,876					1468,078,064
18	305,091	105,091	- 8,489	921,390	21,390	+ 6,877					127,255,558
16	296,951	96,951	- 7,212	921,005	21,005	- 19,732					172,005,240
											181,579,710
											120,427,072
											72,005,240
											921,005
											21,005
											- 19,732
											51,488,060
											1913,037,132
											590,550,398
											66,858,846
											5730,943,799
											4244,635,251
											513,691,552
											513,691,552
											1/2 = 256,845,776

面積計算書

工区

42

ブロック

30

計算者

精算者

709-2

備考

保留地 30-2号

709-2

保留地

点	①	②	③	④	⑤	⑥	③ × ⑤		② × ⑥	
	X	X-(定数)	X _{n-1} -X _{n+1}	Y	Y-(定数)	Y _{n-1} -Y _{n+1}	+	-	+	-
19	305.440	5.440	+ 8.524	911.128	14.128	- 6.876			120.427072	37.405440
3'	313.615	13.615	+ 7.826	914.514	14.514	+ 7.648			113.586564	104.127520
4	313.266	13.266	- 8.522	921.776	21.776	+ 6.876	85.618624			91.217016
18	305.091	5.091	- 7.826	921.390	21.390	- 7.648	167.398140		38.921968	
							353.016764	234.013638	76.341408	195.344576
							119.007128			119.003128
							1/2 59.50			
16	296.951	96.951	+ 16.513	921.005	1.005	- 3.349			16.595565	324.688899
4	313.266	113.266	+ 16.117	921.776	1.776	+ 4.895			28.623792	554.437070
5	313.068	113.068	- 16.513	925.900	5.900	+ 3.349	97.426700			378.664732
20	296.753	96.753	- 16.117	925.125	5.125	- 4.895	82.599625		473.605935	
							180.026325	45.219357	798.294874	933.101802
							134.806968			134.806968
							1/2 67.40			

面積計算書

工区

第2

ブロック

30

計算者



精算者

備考

1014-2, 水路第20号

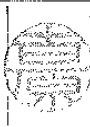
11-1010

水路

点	①	②	③	④	⑤	⑥	③ × ⑤		② × ⑥		
	X	X - (定数)	X _{n-1} - X _{n+1}	Y	Y - (定数)	Y _{n-1} - Y _{n+1}	+	-	+	-	
20	-152, 296.753	-152.200, 96.753	+ 16.906	-38, 925.125	-38.900, 25.125	- 11.556				424.763250	1118.077668
5	313.068	113.068	+ 16.202	925.900	25.900	+ 3.139				419.631800	354.920452
6	312.955	112.955	- 11.143	928.264	28.264	+ 12.036	314.905752				359.526380
9	301.925	101.925	- 16.793	937.936	37.936	+ 9.192	637.059248				976.894600
10	296.162	96.162	- 5.172	937.456	37.456	- 12.811	193.722432				1231.971382
							1145.727432	8.44.395050	2352.009050	2651.341432	
							301.332382				301.332382
							V ₂ = 150.66				
6	-152, 312.955	-152.300, 12.955	+ 10.763	-38, 928.264	-38.900, 28.264	- 4.118				304.205432	53.348690
7	312.688	12.688	- 5.489	933.818	33.818	+ 10.133	185.627002				128.567504
8	307.466	7.466	- 10.763	938.397	38.397	+ 4.118	413.266914				30.744988
9	301.925	1.925	+ 5.489	937.936	37.936	- 10.133				208.230704	19.506025
							598.893913	512.436136	72.854715	159.312492	
							86.457777				86.457777
							V ₂ = 43.228				

計年
月
算日

計
算
者

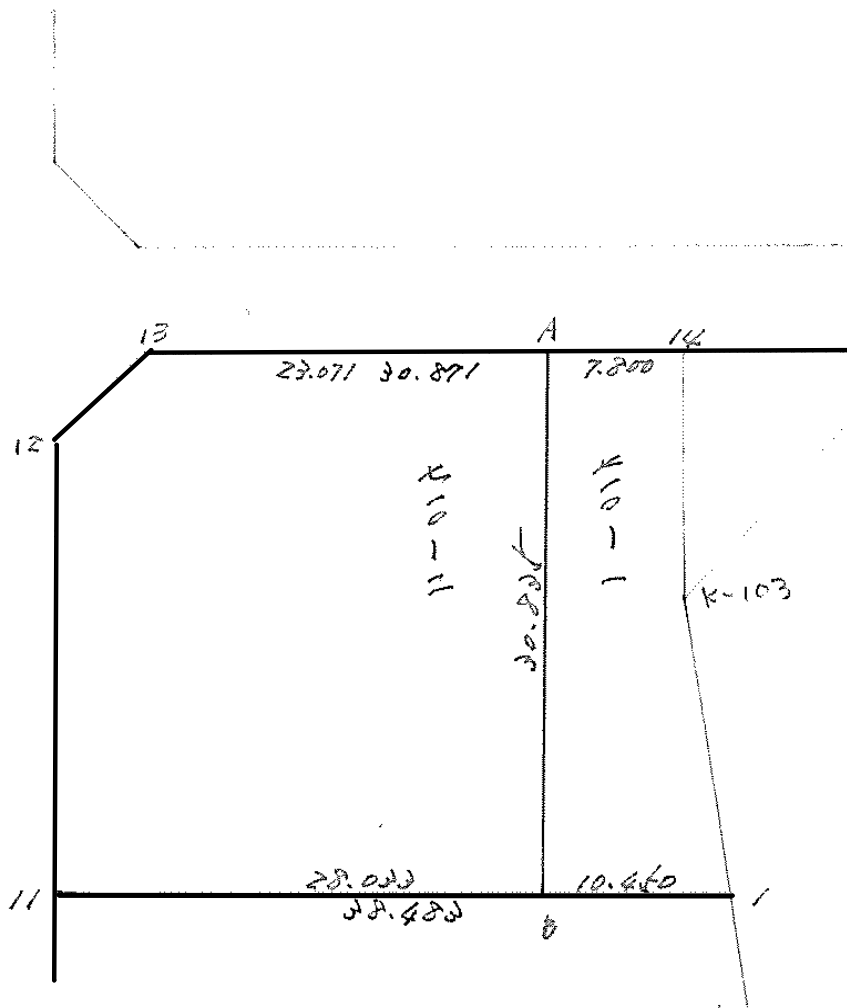


檢
查
者

B.NO. 30

各筆面積計算書

地番	算式	隅切	地積	摘要
1	保留地 30-1号		191.64	
2	710-A		1,114.75	1,311.15 -262.26
3	709-7		140.84	
4	709-6		165.19	
5	709-5		330.27	
6	709-4		165.52	
7	709-9		473.31	
8	709-1		66.05	
9	709-8		165.10	
10	保留地 30-3号		153.11	
11	709-3		256.84	
12	709-2		59.50	
13	保留地 30-2号		67.40	
14	1014-2		150.66	
			3,500.24	
	水路第 20号線	43.22		
		合計	3,543.46	
		全体	3,543.49	
		差	-0.03	



面積計算書

工区

ブロック

30

計算者

精算者

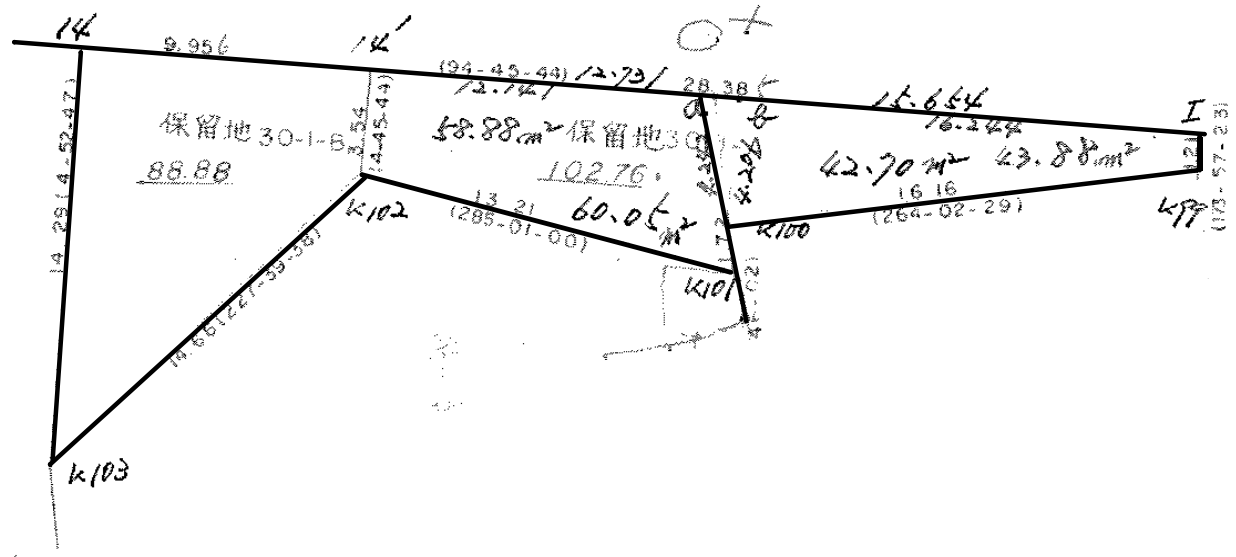
備考

710-2

710-1

点	①	②	③	④	⑤	⑥	③ × ⑤		② × ⑥	
	X	X - (定数)	X _{n-1} - X _n	Y	Y - (定数)	Y _{n-1} - Y _n	+	-	+	-
12	⁻¹¹² 228 805	^{+152 220.000} - 8.805	- 2.653	⁻²⁸ 906 801	^{+78 900.000} - 26.831	- 28.388	71.182643		249.956340	
A	220 720	- 10.720	+ 32.641	902 840	- 3.840	- 20.396		125.341220	218.645120	
B	261 446	- 41.446	+ 28.404	906 425	- 6.435	+ 30.532		182.779740		1265.429292
11	259 124	- 39.124	- 28.073	934 372	- 34.372	+ 25.793	964.925156			1009.125332
12	232 373	- 13.373	- 30.319	932 228	- 32.228	- 7.541	977.120732			100.845793
							203.228531	308.121180	569.447253	2274.554604
							1705.107351		1705.107351	
							1705.107351 × 1/2 = 852.5536755			
A	⁻¹¹² 220 720	^{+152 230.000} - 0.720	- 30.078	⁻²⁸ 902 840	^{+78 890.000} - 13.840	- 10.368	416.299520		7.464960	
14	221 368	- 1.368	+ 14.891	896 067	- 6.067	- 6.557		90.343697	8.969976	
k-102	245 611	- 15.611	+ 30.943	897 282	- 7.283	- 0.046		225.057869	0.718106	
1	262 211	- 32.311	+ 15.835	896 021	- 6.021	+ 9.152		95.342535		295.710272
B	261 446	- 31.446	- 31.591	906 425	- 16.435	+ 7.819	519.198085			245.896274
							935.477605	411.092101	17.183042	571.586546
							524.433504		524.433504	
							524.433504 × 1/2 = 262.216752			

262.216752



面積計算書

工区

第2地区

ブロック

30

計算者



積算者

備考

保留地 30-1-A号

30-1-B号

点	①	②	③	④	⑤	⑥	⑦	⑧	⑨	⑩
	X	X - (定数)	X _{n-1} - X _{n+1}	Y	Y - (定数)	Y _{n-1} - Y _{n+1}	+	-	+	-
I	-152 234.551	-152.230 4.551	+ 3.565	-38 857.858	-38.850 7.858	- 28.415			28.013770	129.316665
K.99	235.760	5.760	+ 2.887	857.730	7.730	+ 15.949			22.316570	91.866240
K.100	237.438	7.438	+ 3.394	873.807	23.807	+ 15.950			80.800958	118.633100
K.101	239.154	9.154	- 1.707	873.680	23.680	+ 12.633	110.421760			115.642482
K.102	235.731	5.731	- 6.959	886.440	36.440	+ 12.465	253.585960			71.436915
14'	232.195	2.195	- 1.180	886.145	36.145	- 28.582	42.651100			62.737490
							336.658820	131.131238	192.054155	397.581737
							205.527582			205.527582
							$\frac{V}{2} = 102.763991$		分筆あり	
14'	-152 232.195	-152.230 2.195	+ 4.363	-38 886.145	-38.880 6.145	- 9.627			26.810635	21.131265
K.102	235.731	5.731	+ 13.416	886.440	6.440	+ 11.138			86.399040	63.831878
K.103	245.611	15.611	- 16.363	897.283	17.283	+ 9.627	75.405729			152.287097
14	231.368	1.368	- 13.416	896.067	16.067	- 11.138	215.554272			
							290.960601	113.209675	36.368049	214.118975
							102.76 + 88.88 = 191.64			177.750926
							191.64			177.750926
							$\frac{V}{2} = 89.885463$			

-) 0.00

