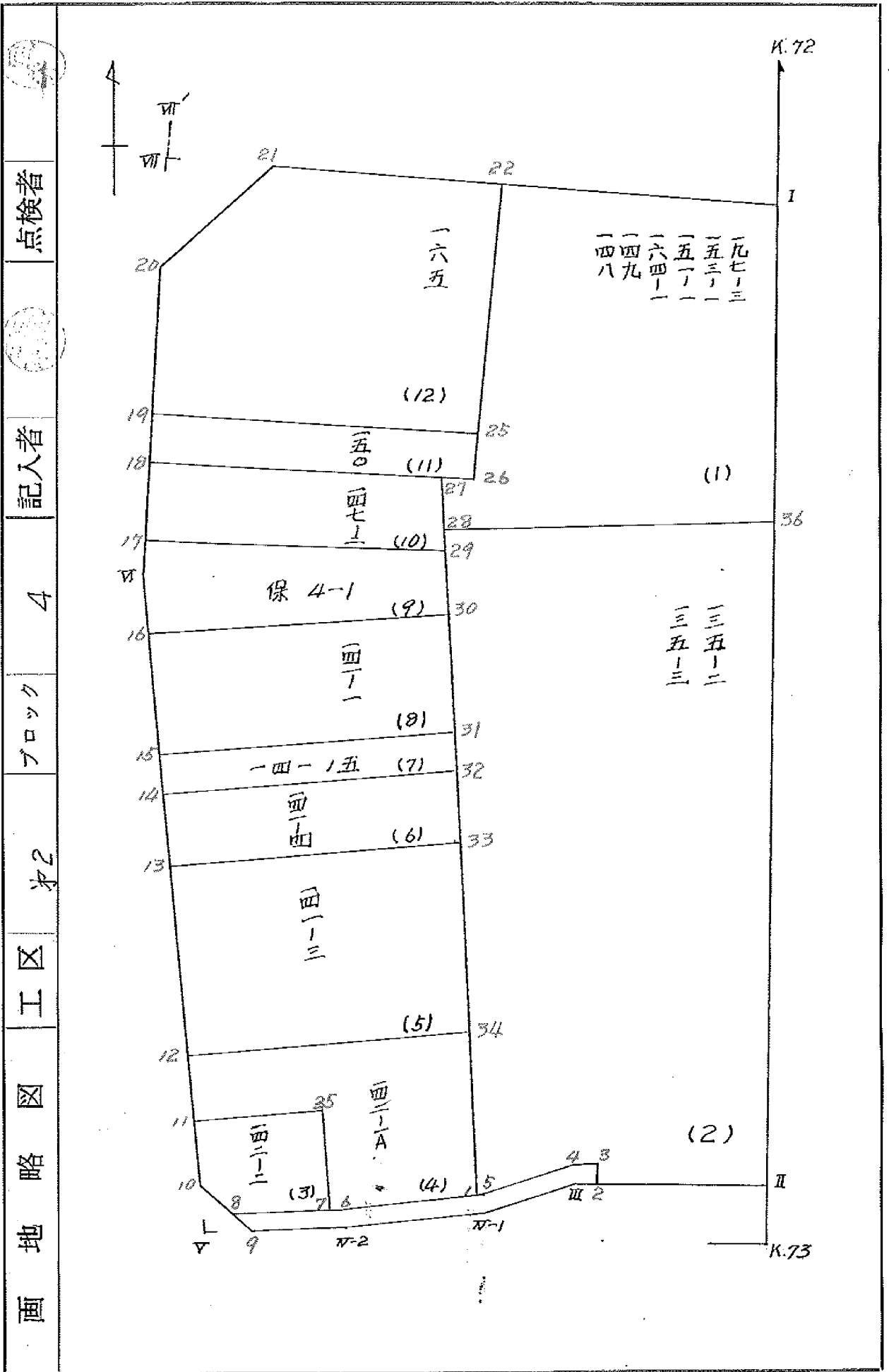


BLOCK NO. 4



点検者

記入者

4

ブロック

第2

工区

図

地略

画面

面積計算書

工区

第2

ブロック

4

計算者



精算者



備考

全体

点	①	②	③	④	⑤	⑥	③ × ⑤		② × ⑥	
	X	X-(定数)	X _{n-1} -X _{n+1}	Y	Y-(定数)	Y _{n-1} -Y _{n+1}	+	-	+	-
	-152	-152.200		-38	-38.200					
I	243.908	43.908	+ 192.688	300.402	100.402	- 75.237			19246.260576	3303.506196
II	422.131	22.131	+ 180.799	287.159	87.159	+ 25.662			15458.260041	5700.325722
III	424.707	24.707	+ 5.540	326.064	126.064	+ 48.371			698.394560	10869.302291
IV-1	427.671	27.671	+ 4.742	335.530	135.530	+ 21.627			607.683260	4923.340717
IV-2	429.449	29.449	+ 3.821	347.691	147.691	+ 26.699			564.327311	6126.058851
9	431.492	31.492	- 0.520	362.229	162.229	+ 17.858	84.359080			4133.984186
10	428.929	28.929	- 117.916	365.549	165.549	+ 16.822	19520.875884			3851.043638
11	313.576	13.576	- 192.763	379.051	179.051	+ 6.191	34514.407913			703.149016
20	236.166	36.166	- 84.133	371.740	171.740	- 16.655	112449.001420		602.344730	
21	229.443	29.443	+ 7.742	362.396	162.396	- 71.338			1257.269832	2100.404796
									68568.644297	38267.195580
									6006.255660	36307.704377
									30301.448717	30301.448717
									V ₂ = 15150.72	

面地計算

面積計算書

工区

※2

ブロック

4

計算者



精算者



備考

(2) 135-2 135-3

(三)

点	①	②	③	④	⑤	⑥	+	-	+	-
	X	X-(定数)	X _{n-1} -X _{n+1}	Y	Y-(定数)	Y _{n-1} -Y _{n+1}				
	-52	-52,200		-52	-52,200					
36	294.722	94.722	+ 123.776	296.626	96.626	- 58.374			11959.979776	- 5529.302028
II	422.131	222.131	+ 129.985	287.159	87.159	+ 27.931			11320.646715	6204.340961
2	424.607	224.607	+ 0.979	324.557	124.557	+ 37.497			121.941308	8022.088679
3	423.110	223.110	- 1.384	324.656	124.656	+ 1.787	172.523904			398.697670
4	423.223	223.223	+ 3.094	326.344	126.344	+ 11.209			390.908336	2592.106607
5	426.204	226.204	+ 2.999	325.865	125.865	+ 9.645			407.459135	2181.727580
1	426.222	226.222	- 127.849	325.989	125.989	+ 9.668	17386.057661			2127.114296
28	298.355	98.355	- 131.500	345.533	145.533	- 39.363	19137.589590		3271.547865	
							36696.171065	24200.925265	9400.849899	21896.095592
							12495.235800			12495.235800

分筆後の座標なし

面積計算書

工区

第2

ブロック

4

計算者



精算者

備考

(3) 142-2

(3)

点	①	②	③	④	⑤	⑥	③ × ⑤		② × ⑥	
	X	X-(定数)	X _{n-1} -X _{n+1}	Y	Y-(定数)	Y _{n-1} -Y _{n+1}	+	-	+	-
35	-152, 416.203	-152.400 16.203	+ 10.533	-38, 353.738	-38.350 3.738	- 14.533		39.372354	235.478199	
7	428.580	28.580	+ 14.007	352.290	2.290	+ 10.152		32.076030		290.144160
8	430.210	30.210	+ 0.349	363.890	13.890	+ 13.259		4.847610		400.554390
10	428.929	28.929	- 12.163	365.549	15.549	+ 2.933	189.122487			84.848757
11	418.047	18.047	- 12.726	366.823	16.823	- 11.811	214.089498		213.153117	
							403.211985	76.295994	448.631316	775.547307
							326.915991			326.915991
									1/2 = 163.4579955	

面積計算書

工区 722
 ブロック 4
 計測者
 精算者
 備考
 -1D-, 三 (5)
 , -1D=, -A (4)

点	①	②	③	④	⑤	⑥	③	×	⑤	②	×	⑥
	X	X-(定数)	X _{n-1} -X _{n+1}	Y	Y-(定数)	Y _{n-1} -Y _{n+1}	+	-	+	-		
33	-152, 337.450	-152,300 57.450	+ 41.409	-38, 341.122	-38,300 41.122	- 35.726				1702.820998 2052.459709		
34	402.572	102.572	+ 48.678	337.753	37.753	+ 27.076				1237.740534		2779.832832
12	406.128	106.128	- 41.409	368.218	68.218	+ 35.726	3824.829162					3791.528928
13	361.183	61.183	- 48.678	373.479	73.479	- 27.076	3576.810762			1627.814368		
							6401.629924	3540.561432	3710.273268			6571.361760
							2861.088492					2861.088492
										$\sqrt{2} = 1430.544246$		
34	-152, 402.572	-152,400 2.572	- 20.894	-38, 337.753	-38,300 37.753	- 32.227				758.608782		83.537568
1	426.222	26.222	+	25.372	325.989	+	10.151			912.112908		246.179522
6	427.964	27.964	+	23.58	347.904	+	16.301			112.957632		435.801164
7	428.580	28.580	-	11.76	322.290	+	5.834	64992690				166.735720
35	416.203	16.203	-	10.533	353.738	+	14.533	566.022354				235.478199
11	418.047	18.047	-	10.075	366.823	+	14.480	672.241725				261.320560
12	406.128	6.128	-	15.455	368.218	-	29.070	1054.309190		172.140960		
							2908.55959	1786.679322	261.678528	9385.535165		
							1123.876637					1123.876637
										$\sqrt{2} = 561.7383185$		

面積計算書

工
区

※2

ブ
ロ
ック

4

計
算
者



精
算
者



備
考

-四-, 五
(7)

-四-, 四
(6)

(2)

(2)

点	①	②	③	④	⑤	⑥	③ × ⑤		② × ⑥	
	X	X-(定数)	X _{n-1} -X _{n+1}	Y	Y-(定数)	Y _{n-1} -Y _{n+1}	+	-	+	-
	-152	-152,330		-38,	-38,340					
31	338,562	8,562	+ 2,604	342,532	2,532	- 33,627		6,293,328	287,914,374	
32	344,990	14,990	+ 10,222	342,052	2,052	+ 32,398		20,975,504		485,646,020
14	348,784	8,784	- 2,604	374,930	34,930	+ 33,627	90,957,720			631,649,368
15	342,386	12,386	- 10,222	375,679	35,679	- 32,398	364,710,738		401,281,628	
								455,668,458	27,562,872	689,196,002
								428,099,586		428,099,586
								1/2 = 214,049,793		
	-152,	-152,340		-38,	-38,340					
32	344,990	4,990	+ 8,666	342,052	2,052	- 33,808		17,782,632	168,701,920	
33	357,450	17,450	+ 16,193	341,122	1,122	+ 31,427		18,168,546		549,401,150
13	361,183	21,183	- 8,666	373,479	33,479	+ 33,808	290,129,014			716,154,864
14	348,784	8,784	- 16,193	374,930	34,930	- 31,427	565,621,090		276,054,768	
								855,752,504	35,951,178	1144,756,688
								819,799,326		219,799,326
								1/2 = 409,899,663		

面積計算書

工
区

社

ブ
ロ
ック

4

計
算
者

精
算
者

備
考

保4-1 (9)

-10-1-1 (8)

点	①	②	③	④	⑤	⑥	③ × ⑤		② × ⑥	
	X	X-(定数)	X _{n-1} -X _{n+1}	Y	Y-(定数)	Y _{n-1} -Y _{n+1}	+	-	+	-
29	-152, 305.267	-152,300 5.367	+ 13.383	-38, 345.010	-38,340 5.010	- 33.742			67.048830	181.160798
30	315.662	15.662	+ 14.226	344.242	4.242	+ 33.336			60.346692	522.108432
16	319.595	19.595	- 2.096	378.346	38.246	+ 34.809	79.989756			182.082256
17	313.576	13.576	- 17.316	379.451	37.051	- 0.362	676.20716			4.914512
	302.279	2.279	- 8.207	377.984	27.984	- 34.041	311.734688			77.579439
							1067.931560	-127.375522	263.650749	-1204.190787
							940.536038			940.536038
									1/2 = 470.268019	
30	-152, 315.662	-152,300 15.662	+ 18.967	-38, 344.242	-38,340 4.242	- 35.214			80.458014	560.918868
31	338.562	38.562	+ 26.724	342.532	2.532	+ 31.437			67.665168	1212.273594
15	342.386	42.386	- 18.967	375.679	35.679	+ 35.814	676.723893			1518.012204
16	319.595	19.595	- 26.724	378.346	38.346	- 31.437	1024.758504			616.008015
							1701.482097	148.123182	1176.926883	2730.285792
							1553.358915			1553.358915
									1/2 = 776.6794575	

面積計算書

工区

※Z

ブロック

4

計算者



精算者



備考

(11), 150, (10), 147.2

(11)

(10)

点	①	②	③	④	⑤	⑥	③ × ⑤		② × ⑥	
	X	X-(定数)	X _{n-1} -X _{n+1}	Y	Y-(定数)	Y _{n-1} -Y _{n+1}	+	-	+	-
	-152	-152.270		-38	-38.300					
25	275.566	5.566	+ 14.261	335.074	35.074	- 39.036		500.190314	217.270376	
26	286.045	16.045	+ 6.699	336.068	36.068	+ 41.020		241.619532		658.165900
18	282.265	12.265	- 14.261	376.094	76.094	+ 39.036	1085.176534			478.776540
19	271.784	1.784	- 6.699	375.104	75.104	41.020	503.121696		73.179680	
							1588.29823074	809.846	290.456256	1126.902440
							846.488384			846.488384
								1/2 = 423.24		
	-152	-152.200		-38	-38.340					
27	285.057	85.057	+ 23.104	346.526	6.526	- 31.084		150.776704	643.911788	
29	305.369	105.369	+ 17.222	345.010	5.010	+ 31.458		86.282220		3314.698002
17	302.279	102.279	- 23.104	377.984	37.984	+ 31.084	877.582336			3179.240436
18	282.265	82.265	- 17.222	376.094	36.094	- 31.458	621.610868		287.892370	
							1499.193204	237.058924	533.804158	6493.938438
							1262.174280			1262.134280
								1/2 = 631.06		

面積計算書

工区

#2

ブロック

44

計算者



縮小者



備考

(12) 165

73

点	①	②	③	④	⑤	⑥	③ × ⑤		② × ⑥	
	X	X - (定数)	X _{n-1} - X _{n+1}	Y	Y - (定数)	Y _{n-1} - Y _{n+1}	+	-	+	-
	-152.	-152.200		-38.	-38.300					
22	236.679	36.679	+ 46.123	331.383	31.383	- 27.322			1447.478	109.1002
25	275.566	75.566	+ 35.105	335.074	35.074	+ 43.721			1231.272	770.3303
19	271.784	71.784	- 39.200	375.104	75.104	+ 36.666	2959.097	600.0		2632.032
20	236.166	36.166	- 42.341	371.740	71.740	- 12.708	3027.543	540.1		469.597
21	229.443	29.443	+ 0.513	362.396	62.396	40.357			32.009	148.115
							5996.440	940.2	2710.760	027.260
									2649.972	317.5935
							3285.880	913.1		3285.880
									1/2 = 1642.941	

面積計算書

工区

#2

ブロック

44

計算者



精算者



備考

水路第1号線

点	①	②	③	④	⑤	⑥	③ × ⑤		② × ⑥	
	X	X-(定数)	X _{n-1} -X _{n+1}	Y	Y-(定数)	Y _{n-1} -Y _{n+1}	+	-	+	-
	-152	-152.400		-58	-58.300					
2	424.607	24.607	- 1.597	324.557	24.557	- 1.408	39.217529		24.646656	
3	423.110	23.110	- 1.384	324.656	24.656	+ 1.787	34.123904			41.297570
4	423.223	23.223	+ 3.094	326.344	26.344	+ 11.209		81.508336		260.306607
5	426.204	26.204	+ 4.741	335.865	35.865	+ 21.560		170.035965		566.958240
6	427.964	27.964	+ 4.006	347.904	47.904	+ 28.025		191.903424		783.691100
8	430.210	30.210	+ 3.528	363.890	63.890	+ 14.325		225.403920		432.758250
9	431.492	31.492	- 0.761	362.229	62.229	- 16.199	47.356269		510.138908	
N-2	429.449	29.449	- 3.821	347.691	47.691	- 26.699	182.227311		786.258851	
N-1	427.671	27.671	- 4.762	335.530	35.530	- 21.627	168.403260		598.440717	
III	424.707	24.707	- 3.064	326.064	26.064	- 10.973	79.860986		271.109911	
							551268369	668.851665	2200595043	2083.011767
							117.583276			117.583276
							$\sum = 58.79$			

計年
月
算日

計
算
者



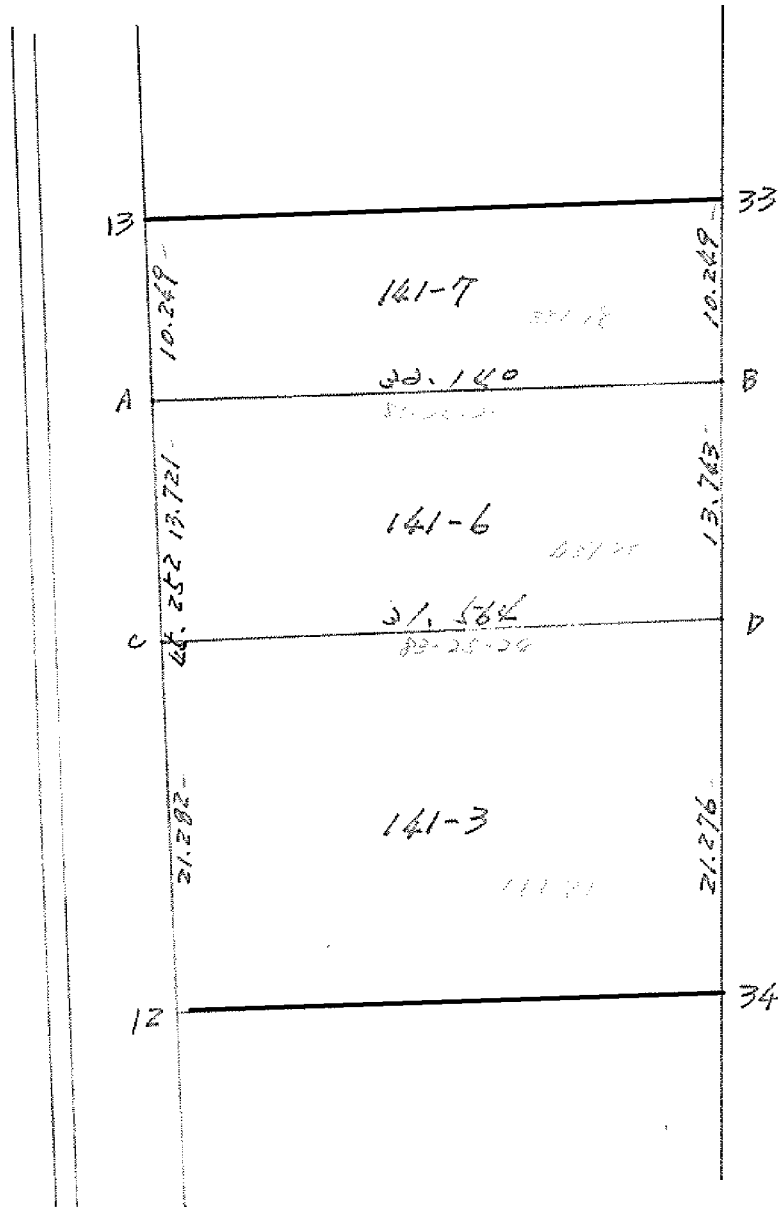
檢
查
者



B.NO. 4

各筆面積計算書

地番	算式	隅切	地積	摘要
1	148, 149, 164-1 151-1, 153-1, 197-3		2,120.23	
2	135-2, 135-3		6,247.61	
3	142-2		163.45	
4	142-1A		561.93	
5	141-3		1,430.54	
6	141-4		409.89	
7	141-5		214.04	
8	141-1		776.67	
9	保留地第4-1号		470.26	
10	147-2		631.06	
11	150		423.24	
12	165		1,642.94	
			15,091.86	
	水路第1号線	58.79		
		58.79		
		合計	15,150.65	
		全体	15,150.72	
			差 - 0.07	



面積計算書

工
区

ブ
ロ
ク

4

計
算
者

栗
木

精
算
者

備
考

点	①	②	③	④	⑤	⑥	③ × ⑤		② × ⑥	
	X	X - (定数)	X _{n-1} - X _n	Y	Y - (定数)	Y _{n-1} - Y _n	+	-	+	-
13	⁻¹⁸² 261.182	- 11.182	- 12.912	⁻²⁸ 272.479	- 23.479	- 21.165	465.759848		248.518195	
22	257.450	- 7.450 + 6.488		241.122	- 1.122	- 23.120		7.279536	246.744000	
B	267.671	- 17.671 + 12.912		240.259	- 0.259 + 21.165			4.994408		440.716715
A	271.262	- 21.262 - 6.488		272.287	- 22.287 + 23.120		209.478056			707.509440
							675.227904	12.272924	595.262195	1258.226155
								662.963960	662.963960	
								1/2 221.481980		
A	271.262	- 11.262 - 17.219		272.287	- 22.287 - 20.233		722.268442		241.642446	
B	267.671	- 7.671 + 10.012		240.259	- 10.259 - 22.951			102.724667	252.767121	
D	281.275	- 21.275 + 17.219		229.226	- 9.226 + 20.222			161.690184	648.267875	
C	284.990	- 24.990 - 10.012		270.692	- 40.692 + 22.951		407.448996		822.445490	
							1129.817449	265.411851	197.410667	1471.812265
								274.402698	274.402698	
								1/2 427.24249		

-41-7

-41-6

面積計算書

工
区

ブ
ロ
ック

←

計
算
者

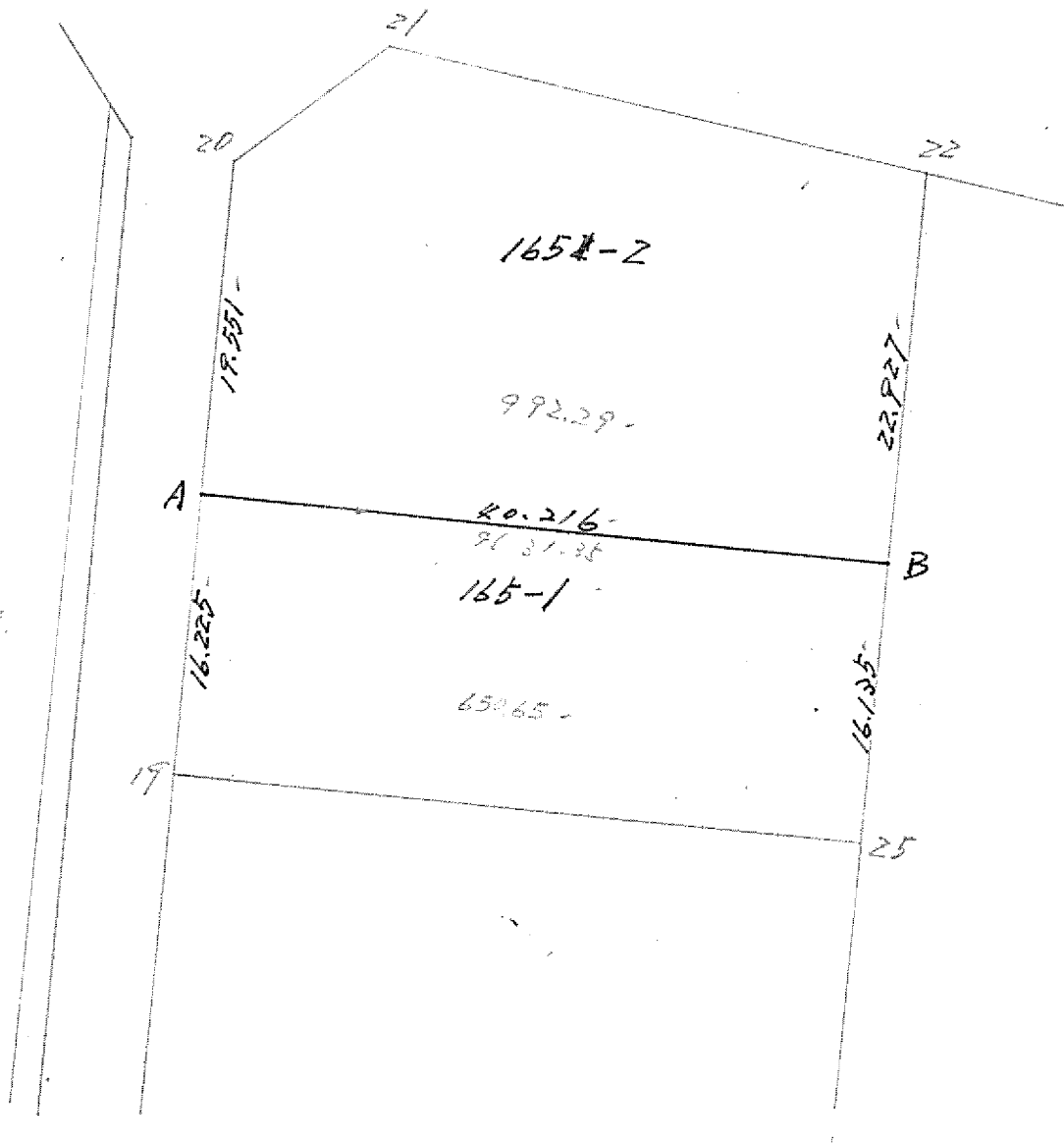


精
算
者

備
考

3
141-1

点	①	②	③	④	⑤	⑥	③ × ⑤		② × ⑥		
	X	X - (定数)	X _{n-1} - X _{n-2}	Y	Y - (定数)	Y _{n-1} - Y _{n-2}	+	-	+	-	
U	384.990	- 4.990	- 26.750	370.692	- 40.692	- 28.882	1007.249076			144.10180	
D	381.375	- 1.375	+ 17.602	369.336	- 9.336	- 22.939		164.332272		44.291125	
34	402.692	- 22.692	+ 24.750	377.500	- 7.750	+ 28.882		191.910009			62.502144
12	406.128	- 26.128	- 17.602	368.218	- 38.218	+ 22.939	672.712236				860.630192
							1679.962312	356.242281	189.412205	1413.132236	
								1322.720031	1322.720031		
								661.860015			



面積計算書

工区

ブロック

←

計算者



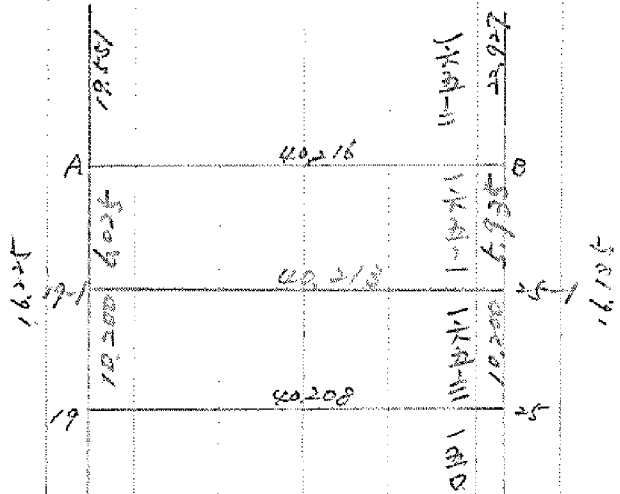
精算者

備考

165-2

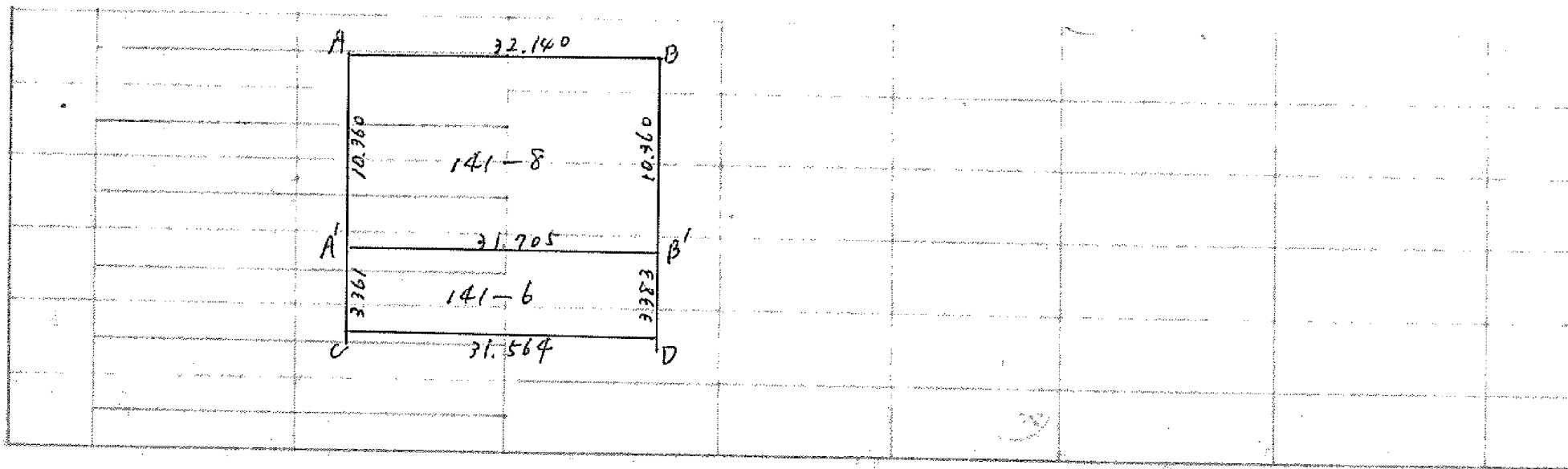
165-1

点	①	②	③	④	⑤	⑥	③ × ⑤		② × ⑥	
	X	X - (定数)	X _{n-1} - X _n	Y	Y - (定数)	Y _{n-1} - Y _n	+	-	+	-
21	⁻¹⁵² 229 443	- 9.443	+ 0.513	⁻³⁸ 262 296	- 22.396	- 40.357		16.619148	281.091151	
22	236 679	- 16.679	+ 20.060	221 282	- 1.282	- 28.846		41.672980	481.122434	
B	259 503	- 39.503	+ 18.951	222 550	- 2.550	+ 42.196		57.276050	1666.868588	
A	255 620	- 25.620	- 22.227	272 579	- 42.579	+ 28.190	1017.002123		1260.709700	
20	226 166	- 16.166	- 26.187	271 740	- 41.740	- 11.183	1093.045380		180.784378	
							2110.028502	125.468178	1022.997962	2027.578288
								982.580225	1924.580225	
							1/2	992.2901625		
A	⁻¹⁵² 255 620	- 5.620	- 12.281	⁻³⁸ 272 579	- 42.579	- 41.554	525.192699		223.949020	
B	259 503	- 9.503	+ 19.936	222 550	- 2.550	- 28.505		70.772800	265.912015	
25	275 566	- 25.566	+ 12.281	225 074	- 5.074	+ 41.554		62.312794	1062.369564	
19	271 784	- 21.784	- 19.936	275 104	- 25.104	+ 28.505	899.192244		828.792920	
							425.287042	122.086594	579.862025	1901.162484
								1202.200449	1201.200449	
							1/2	650.6502245		



面積計算書

点	①	②	③	④	⑤	⑥	⑦	⑧	⑨	⑩
	X	X - (定数)	X _{n-1} - X _{n+1}	Y	Y - (定数)	Y _{n-1} - Y _{n+1}	+	-	+	-
		-152,250-			-38,330-				165-1	165-3
A	-152,245.620-	5.620-	-2.126-	-38,272.579-	42.579-	-40.595-	92.648954-		228.549850-	
B	-152,259.520	9.520-	+9.782-	-38,222.410-	2.550-	-39.469-		34.726100-	375.073907-	
25-1	-152,265.412-	15.412-	+2.126-	-38,224.110-	4.110-	+40.595-		8.737860-		625.652140-
19-1	-152,261.629-	11.629-	-9.782-	-38,274.145-	44.145-	+39.469-	421.826390-			458.985201-
							524.475244-	43.462960-	603.623757-	1082.635141-
							481.011384			481.011284-
							150.65-410.16=240.51			
									$\frac{1}{2} = 240.505692-$	
		-152,260-			-38,330-					
19-1	-152,261.629-	1.629-	+6.372-	-38,274.145-	44.145-	+40.994-		281.291940-		68.729226-
19	-152,271.784-	11.784-	+12.927-	-38,275.104-	45.104-	-39.071-		628.614448-	460.412664-	
25	-152,275.566-	15.566-	-6.372-	-38,225.074-	5.074-	-40.994-	22.331528-			638.12604-
25-1	-152,265.412-	5.412-	-12.927-	-38,224.110-	4.110-	+39.071-	57.281070-			211.452252-
							89.612598-	909.906388	1098.525268-	278.231478-
							820.293790-	820.293790		
									$\frac{1}{2} = 410.146895-$	



計算者

実検者

座標法面積計算 (141-8)

點名	X	Δx	Y	Δy	(+) F ₁ Δx · Δy	(-) F ₂ Δx · Δy
			(-300)			
A	371.362		372.287			
		-10.290		143.370		1475.2773
A'	381.652		371.083			
		+3.650		110.671	403.94915	
B'	378.002		339.588			
		+10.331		79.947	825.932457	
B	367.671		340.359			
		-3.691		112.646		415.776386
A	371.362		372.287			
Σ =					1229.881607	1891.053686
F = (F ₁) ~ (F ₂) =					661.175079	
計算者					F / 2 =	330.5860395
檢査者					× 0.8025 =	

座標法面積計算 (141-6)

測点	X	Δx	Y	Δy	(+) F_1 $\Delta x \cdot \Delta y$	(-) F_2 $\Delta x \cdot \Delta y$
			(-300)			
A'	381.652		371.083			
		+3.650		110.671	403.9415	
B'	378.002		339.588			
		-3.373		78.924		266.210652
D	381.375		339.336			
		-3.615		110.028		397.75122
C	384.990		370.692			
		+3.338		141.775	473.24095	
A	381.652		371.083			
Σ =					877.19410	667.961872
$F = (F_1) - (F_2) =$						213.272228
計算者					$F / 2 =$	106.636114
点検者					$\times 0.8025 =$	10

面積計算表

121-u

No.	Xi	Xi-(定数)		Yi	Yi-(定数)	Xi-1-Xi+1	Xi-定数(Yi-1-Yi+1)		Yi-定数(Xi-1-Xi+1)	
	(1)	(2)	(3)	(4)	(5)	(6)	(7)+	(8)-	(9)+	(10)-
2	⁻¹⁵ 2391.904		5.178	⁻³ 2369.884		9.915		⁻¹⁵¹ 0965.728160		¹⁹ 2677.254174
4	⁻¹⁵ 2395.277		7.226	⁻³ 2369.418		-10.949	¹⁵⁷ 7144.931079			¹⁰ 8431.975268
17	⁻¹⁵ 2394.730		-7.289	⁻³ 2357.534		-19.718	³⁰⁰ 4919.286140		⁸ 7804.973326	
16	⁻¹⁵ 2394.588		-7.127	⁻³ 2349.700		-9.602	¹⁴⁶ 3289.231976		¹¹ 9919.511900	
15	⁻¹⁵ 2391.604		-3.973	⁻⁴ 2349.932		0.465		⁷ 0802.095395	¹⁵ 2864.272826	
13	⁻¹⁵ 2389.615		-0.904	⁻⁴ 2350.165		9.571		¹⁴⁵ 8521.005165	³ 4668.549160	
12	⁻¹⁵ 2390.689		2.289	⁻⁴ 2357.504		19.718		³⁰⁰ 4839.802882		³ 7804.902367
計							⁶⁰⁴ 5947.449189	⁶⁰⁴ 5188.631602	³⁹ 4757.914222	³⁹ 4916.131809

倍積	158.217587
面積	79.408799
坪数	

面積計算表

121-9

No.	Xi	Xi-(定数)		Yi	Yi-(定数)	Xi-1-Xi+1	Xi-定数(Yi-1-Yi+1)		Yi-定数(Xi-1-Xi+1)	
	(1)	(2)	(3)	(4)	(5)	(6)	(7)+	(8)-	(9)+	(10)-
3	⁻¹⁵ 2495,877		-11,398	³⁴ 8367,418		-8,684	¹³² 3405,795268		²³ 7334,626364	
4	⁻¹⁵ 2406,128		-9,105	³⁴ 8368,218		11,074		¹⁶⁸ 7745,461472	³⁴ 8342,624870	
5	⁻¹⁵ 2404,982		11,398	³⁴ 8352,344		8,684		¹³² 3484,863688		²³ 7208,404712
17	⁻¹⁵ 2394,730		9,105	³⁴ 8357,534		-11,074	¹⁶⁸ 7619,240020			³⁴ 8263,557070
計							³⁰¹ 1025.035888	³⁰¹ 1230.325160	⁷⁸ 6677.251254	⁷⁸ 6471.961982

倍積	205.287272
面積	102.644636
坪数	

面積計算表

141-10

No	Xi	Xi-(定数)		Yi	Yi-(定数)	Xi-1-Xi+1	Xi-定数(Yi-1-Yi+1)		Yi-定数(Xi-1-Xi+1)	
	(1)	(2)	(3)	(4)	(5)	(6)	(7)+	(8)-	(9)+	(10)-
5	⁻¹⁵ 2404,982		-9,110	⁻³ 8358,944		11,024		¹⁶⁸ 0112,521568	³⁴ 9444519840	
6	⁻¹⁵ 2409,840		11,394	⁻³ 8348,510		8,644		¹³¹ 7378,772960		⁴³ 6942,722740
16	⁻¹⁵ 2393,588		9,110	⁻³ 8349,700		-11,024	¹⁶⁷ 9986,914112			³⁴ 7365,767000
17	⁻¹⁵ 2394,730		-11,394	⁻³ 8349,544		-8,644	¹³¹ 7300,046120		⁴³ 7068,530996	
計							²⁹⁷ 7286,960292	²⁹⁹ 7491,914528	⁷⁸ 6519,044296	⁷⁸ 6308,689940

倍積	204,354296
面積	102,177148
坪数	

面積計算表

141-11

No	Xi	Xi-(定数)	Yi	Yi-(定数)	Xi-1-Xi+1	Xi-定数(Yi-1-Yi+1)		Yi-定数(Xi-1-Xi+1)			
	(1)	(2)		(3)	(4)	(5)	(6)	(7)+	(8)-	(9)+	(10)-
6	-15 2407.840		9.004	⁻² 8348510		11.947	¹⁸² 0768.676480				³⁴ (-289.984040)
7	-15 2402.592		-13549	⁻³ 8337.753		-9.839	¹⁴⁹ 9489.102688			⁻¹ 9438215397	
8	-15 2390.291		-10.990	⁻³ 8338671		12.179		¹⁸⁵ (-961.354089)	⁴² 1341.994270		
15	-15 2391.602		3.297	⁻³ 8348932		11.029		¹⁶⁸ 0726.978458			¹² 6439725804
16	-15 2393.588		12.238	⁻³ 8348700		-1.422	²¹ 6703.682136				⁴⁶ 9323.628600
計							³⁵³ 1961.461304	³⁵³ 6658.332547	⁹⁴ 6780.207687	⁹⁴ 1053.338044	

倍積		273.128757	
面積		136.564378	
坪数			

面積計算表

11-12

No.	X_i	X_i -(定数)		Y_i	Y_i -(定数)	$X_{i-1}-X_{i+1}$	X_i -定数($Y_{i-1}-Y_{i+1}$)		Y_i -定数($X_{i-1}-X_{i+1}$)	
	(1)	(2)	(3)	(4)	(5)	(6)	(7)+	(8)-	(9)+	(10)-
1	-15 2391,652		-11,458	-2 2371,093		-9,208	140 2130,251616		43 2655,869014	
2	-15 2391,904		-9,047	-2 2369,883		11,580		176 2698,248320	34 2192,441501	
12	-15 2390,699		11,458	-2 2359,503		9,208		140 2130,556392		43 2529,185324
11	-15 2390,446		9,047	-2 2369,675		-11,580	176 2569,564680			34 2049,026725
計							316 7695,216276	316 7911,804712	78 6788,200515	78 6572,212025

		-
倍積		215.988416
面積		107.994208
坪數		

面積計算表

141-13

No.	Xi	Xi-(定数)		Yi	Yi-(定数)		Xi-定数(Yi-1-Yi+1)		Yi-定数(Xi-1-Xi+1)	
	(1)	(2)	(3)	(4)	(5)	(6)	(7)+	(8)-	(9)+	(10)-
11	⁻¹⁵ 2380.446		11.450	⁻³ 8269.675		9.159		¹³⁹ 5652.504914		⁴⁹ 8229228750
12	⁻¹⁵ 2390.699		9.169	³ 8359.503		-10.510	¹⁶⁰ 1626246490			⁹⁵ 1718283007
13	⁻¹⁵ 2389.615		-1.199	⁻³ 8359.165		-10.331	¹⁵⁷ 4337112565		⁴ 5981.847835	
14	⁻¹⁵ 2399.500		-10.366	⁻³ 8349.172		0.179		² 7277.720500	³⁹ 7527.516952	
10	⁻¹⁵ 2379.249		-9.054	⁻³ 8350.344		11.503		¹⁷⁵ 2818.501247	³⁴ 7224.04576	
計							³¹⁷ 6969.359055	³¹⁷ 5748.726661	⁷⁹ 0799.379369	⁷⁷ 0948.011757

倍積		214.632394
面積		107.316197
坪数		

面積計算表

141-14

No	Xi	Xi-(定数)		Yi	Yi-(定数)	Xi-1-Xi+1	Xi-定数(Yi-1-Yi+1)		Yi-定数(Xi-1-Xi+1)	
	(1)	(2)	(3)	(4)	(5)	(6)	(7)+	(8)-	(9)+	(10)-
10	⁻¹⁵ 2379.249		11.498	⁻³ 9359344		7.584		¹⁴⁶ 0402722416		⁴⁴ 0752255312
14	⁻¹⁵ 2379.500		10.366	⁻³ 9349172		-9.179	² 7277720507			³⁹ 7527516952
13	⁻¹⁵ 2379.615		2.102	⁻³ 9359165		0.760		¹¹ 5816.107400		⁸ 0612.046893
15	⁻¹⁵ 2391.602		0.676	⁻³ 9349932		-11.474	¹⁷⁵ 1589073388			² 5924554032
8	⁻¹⁵ 2390.291		-13.600	⁻³ 9338671		-10.344	¹⁵⁷ 6325170104		⁵² 1405.925600	
9	⁻¹⁵ 2379.002		-11.042	⁻³ 9339588		11.673		¹⁷⁷ 8708417346		⁴² 3345730676
計							⁹³⁵ 5181.963992	⁹⁴⁵ 4927247134	⁹⁴ 151.656296	⁸⁴ 5016.973126

倍積	264.716830
面積	132.358415
坪数	