



面積計算書

工 区 / / 計算者  積算者  備考

点	①	②	③	④	⑤	⑥	⑦ ×	⑧ ×	⑨
	X	X - (定数)	$X_{n-1} - X_{n+1}$	Y	Y - (定数)	$Y_{n-1} - Y_{n+1}$	+	-	+ -
工	-152 476.440	(-152400.000) -76.440	+23.033	-35 786.091	(-35700.000) -86.091	-49.015		1982.934003	3746.706600
II	521.633	-121.633	+96.576	781.510	-81.510	-9.787		7871.909760	1190.422171
III	573.016	-173.016	+ 135.523 135.523	776.304	-76.304	-13.750		10340.946992	2378.970000
IV	657.156	-257.156	+88.342	767.760	-67.760	+37.618		5986.053920	9673.694408
XI	661.358	-261.358	+4.746	813.922	-113.922	+52.137		540.673812	13626.422046
XII	661.902	-261.902	+9.086	819.897	-119.897	+99.797		1089.384142	
V	670.444	-270.444	- 28.855 32.924	913.719	-213.719	+125.929	6166.861745		26137.033894
VI	633.047 628.978	233.047 229.978	-53.608	745.826 749.319	-245.826	+27.652	706.481556 13178.240208		34056.742476
VII	618.836	-216.836	- 37.279 33.278	941.372	-241.372	-10.242	8998.106788		2220.834312
VIII	595.768	-195.768	-10.152	935.584	-235.584	-49.931	2391.648768		9774.892008
K6	606.684	-206.684	+18.270	891.441	-191.441	-43.927		3497.627070	9079.008068
K7	614.038	-214.038	+9.216	891.657	-191.657	-13.357		1766.310912	2813.101434
K8	615.900	-215.900	+20.818	878.298	-178.298	-15.644		3711.807764	3377.539600
K9	634.856	-234.856	+19.410	876.013	-176.013	-23.730		3416.442336	5573.132880
K10	635.310	-235.310	-90.023	854.568	-154.568	-39.000	13914.675064		9177.090000
K11	544.833	-144.833	-91.085	837.013	-137.013	-15.557	12479.829105		2253.166981
K12	544.225	-144.225	- 84.664 84.664	839.011	-139.011	-1.637	4318.677304		236096325
III XIII	510.169	-110.169	-43.645	835.376	-135.376	-4.659	5908.485520		513.277371

面積計算書

工
区

ブ
ロ
ック

計
算
者



測
算
者



備
考

点	①	②	③	④	⑤	⑥	⑦ × ⑧	⑨ × ⑩		
	X	X - (定数)	$X_{n-1} - X_{n+1}$	Y	Y - (定数)	$Y_{n-1} - Y_{n+1}$	+	-	+	-
※K13	-152 500.580	(-152400.000) -100.580	-11.569	-35 835.352	(-35700.000) -134.352	-4.851	1554.318288		487.913580	
X	498.600	-98.600	-24.140	830.525	-130.525	-48.261	3150.873500		4758.534600	
							72136448877403040657055833807141670710452350		32437388272	32437388272
							*1/2 = 162161941361			
							72561.716290	40204.060705	57580.685930	89938341515
							32357.655585			32357.655585
							*1/2 = 16178.8277925			

面積計算書

工
区

ブ
ロ
ック

計
算
者

精
算
者

備
考

保 1~1~3

点	①	②	③	④	⑤	⑥	③ × ⑤		② × ⑥	
	X	X - (定数)	X _{n-1} - X _{n+1}	Y	Y - (定数)	Y _{n-1} - Y _{n+1}	+	-	+	-
30	⁻¹⁵² 620.324	^{-152.610} 10.324	- 6.570	⁻³⁵ 818.108	^{-35.790} 28.108	~ 20.362		184.669.560		210.217.288
32	617.770	7.770	+ 4.752 ^{2.128} 6.570	797.336	7.336	- 21.223	15.611.008			164.902.710
33	622.452	12.452	+ 6.570	796.885	6.885	+ 20.362	45.224.450		253.547.624	
30	624.360	14.340	- 4.752 ^{2.128} 6.570	817.698	27.698	+ 21.223		58.941.344	304.337.820	
							60845458	243.610.904	557.885.444	375.119.988
								182.765.446	182.765.446	
								1/2 = 91.382		

面積計算書

工
区

/

ブ
ロ
ック

/

計
算
者

測
算
者

備
考

60P-2(1)

点	①	②	③	④	⑤	⑥	③ × ⑤		② × ⑥	
	X	X - (定数)	X _{n-1} - X _{n+1}	Y	Y - (定数)	Y _{n-1} - Y _{n+1}	+	-	+	-
29	152. 602.020	152.590 12.020	-20.634	35. 819.975	35.990 29.975	-21.205	118.60440		24.288110	
31	599.690	9.690	+15.551	796.903	6.903	-24.889		107.228443	24.172416	
32'	617.571	27.571	+18.080	795.086	5.086	+0.473		91.944880		11.928023
32	617.770	27.770	+2.753	797.336	7.336	-23.022		20.196108		69.220910
30'	620.324	30.324	-15.750	818.108	28.108	+22.639	24.590100			191.40236
							106.120160	21.949441	496.058110	1227.266219
							94.705709	450.863844		84.705709

面積計算書

工
区

ブ
ロ
ック

計
算
者



測
算
者



備
考

点	①	②	③	④	⑤	⑥	③ × ⑤		② × ④	
	X	X-(定数)	$X_{n-1}-X_{n+1}$	Y	Y-(定数)	$Y_{n-1}-Y_{n+1}$	+	-	+	-
東野 621 622										
1	-152477.779	-152470.000 -7.779	-17.836	-35788.776	-35770.000 -18.776	-42.052	334888.736		327.122500	
2	479.425	-9.425	+83.351	785.788	-15.788	-11.268		1315.945588	106.200900	
3	561.130	-91.130	+86.374	777.508	-7.508	+37.882		648.495992		3452.186660
28	565.777	-95.777	-57.546	823.670	-53.670	+52.712	3195.833820			5049.756888
27	501.584	-31.584	-68.538	830.220	-60.220	+4.170	4127.358360			131.705280
26	497.261	-21.261	-23.805	827.840	-57.840	-41.444	1376.981200		1127.804884	
							9034.962116	1964.441580	1563.128292	8633.648828
							7070.520536			7070.520536
							$Y_2 = 3535.260269$			
東野 629.630-2										
3	-152561.130	-152560.000 -1.130	+31.562	-35777.508	-35770.000 -7.508	-49.838		236.967496	56.816940	
4	597.361	-37.361	+40.890	773.832	-3.832	+42.467		156.690480		1586.609587
29	602.020	-42.020	-31.562	819.975	-49.975	+49.838	1577.810950			2094.192760
28	565.777	-5.777	-40.890	823.670	-53.670	-42.467	2194.566800		246.266188	
							3771.877250	393.657976	302.583073	3680.802347
							3378.219274			3378.219274
							$Y_2 = 1689.109687$			

面積計算書

工区 / ブロック / 計算者 / 精算者 / 備考

点	① X	② X-(定数)	③ $X_{n-1}-X_{n+1}$	④ Y	⑤ Y-(定数)	⑥ $Y_{n-1}-Y_{n+1}$	③ × ⑤	② × ⑥
未								
		-152650.000			-35850.000			
44	-152659222	-9.222	-10.957	-3590126	-51.126	-9.609	560.187582	88.614198
43	-152658256	-8.256	+9.032	890589	-40.589	-11.460	366.599848	94.613760
18	668254	-18.254	+10.957	889666	-39.666	+9.609	434.620362	175.402586
19	669213	-19.213	-9.032	900198	-50.198	+11.460	453.388336	220.180980
							1013.575918	801.220210
							212.355708	212.355708
							$\frac{1}{2} = 106.177854$	
未								
		-152600.000			-35870.000			
VI	-152628978	-28.978	-44.276	-35949379	-59.379	+19.642	2626.408044	569.185876
VII	616836	-16.836	-4.360	941372	-51.372	-10.479	1099.305920	176.424444
22	607618	-7.618	+3.060	938840	-48.840	-47.243	149.450400	359.897174
42	619896	-19.896	+50.638	894129	-4.129	-48.251	209.084202	760.001896
43	658256	-58.256	+41.216	890589	-0.589	+27.601	24.276224	1607.923856
21	661 ¹¹² 108	-61.112	-29.278	921 ⁷³⁰ 734	-31.730	+58.730	720.990940	3589.107760
							4652.704904	882.818926
							4269.893978	506.424414
								5766.217492
								4269.893978
							$\frac{1}{2} = 2134.946989$	

面積計算書

工
区

ブ
ロ
ック

計
算
者



補
算
者



備
考

点	①	②	③	④	⑤	⑥	③ ×	⑤	② ×	④
	X	X-(定数)	$X_{n-1}-X_{n+1}$	Y	Y-(定数)	$Y_{n-1}-Y_{n+1}$	+	-	+	-
区野 640-1										
Z1	-152 661 ^{1127152650.000}	-11.112	-10.531	-35 921 ^{730-35900.000}	-21.730	-5.064	228.838630		56.271168	
45	659 713	-9.913 + 8.788		908 655	-8.655 - 13.989		76.060140		138.672957	
20	669 900	-19.900 + 10.531		907 741	-7.741 + 5.064		81.520471		100.773600	
V	670 444	-20.444 - 8.788		913 719	-13.719 + 13.989		120.562572		285.991116	
							349.401202	157.580611	194.944125	284.345125
							191.820591		386.764716	191.820591
							<u>1/2 = 95.9102955</u>			
区野 641-5										
45	-152 659 913 ^{-152650.000}	-9.913	-10.678	-35 908 655 ^{-35900.000}	-8.655	-6.615	92.418090		65.574495	
44	659 222	-9.222 + 9.300		901 126	-11.26	-8.457	10.471800		77.990454	
19	669 213	-19.213 + 10.678		900 198	-0.198 + 6.615		2.114244		127.093995	
20	669 900	-19.900 - 9.300		907 741	-7.741 + 8.457		71.991800		168.294300	
							164.409390	12.586044	143.564949	295.388295
							251.823346		151.823346	
							<u>1/2 = 95.9116731</u>			

面積計算書

工
区

ブ
ロ
ック

計
算
者

精
算
者

備
考

点	①	②	③	④	⑤	⑥	③ ×	⑤	② ×	⑤
	X	X-(定数)	$X_{n-1} - X_{n+1}$	Y	Y-(定数)	$Y_{n-1} - Y_{n+1}$	+	-	+	-
未(イ)		-152590.000			-35790.000					
29	152602020	-12.020	-24.432	25819975	-29.975	-18.643	732.347200		224088860	
31	599908	-9.908	+20.432	799055	-9.055	-23.090		105,011,760	220,775,720	
33	622452	-32.452	+24.432	796885	-6.885	+18.643	109,214,320			605,002,630
30	624340	-34.340	-20.432	817698	-27.698	+23.090	565,925,536			772,910,600
							1292,214,736	353,226,090	452,864,500	1397,913,236
							945,048,656			945,048,656
							$\frac{1}{2}=472,524,328$		変更後の資料なし	
未(ロ)		-152590.000			-35790.000					
4	152597361	-7.361	+15.623	25773832	-3.832	-27.068		59,867,336	199,247,548	
5	615531	-25.531	+20.407	271987	-1.987	+23.504		40,552,683		600,080,624
32	617770	-27.770	-15.623	797336	-27.336	+27.068	427,070,320			751,678,360
31	599908	-9.908	-20.407	799055	-29.055	-23.504	592,983,415		232,877,632	
							1020,053,823	100,420,019	432,125,180	1351,758,994
							919,633,804			919,633,804
							$\frac{1}{2}=459,816,902$		変更後の資料なし	

面積計算書

工区 / ブロック / 計算者 (福生) / 精算者 (藤原) / 備考

点	① X	② X-(定数)	③ $X_{n-1}-X_{n+1}$	④ Y	⑤ Y-(定数)	⑥ $Y_{n-1}-Y_{n+1}$	③ × ⑤ +	⑤ × ⑥ -	② × ⑥ +	③ × ⑥ -
未 (ハ)										
		-152610.000			-35770.000					
5	-152615.531	-5.531	-0.296	-35771.987	-1.987	-26.547	0.588152		141.000457	
6	617474	-7.474	+3.777	771789	-1.789	+17.865	6.757053		133.523010	
35	619308	-9.308	+12.671	789852	-19.852	+16.980		251.544692	158.049240	
36	630145	-20.145	+11.495	788769	-18.769	+6.229		215.749655	125.483205	
34	630803	-20.803	-12.375	796081	-26.081	+8.567		322.752375	178.219301	
32	617770	-7.770	-15.272	777336	-27.336	-24.094		417.475392	187.210380	
								740.815919	474.051400	378.510837
								266.764519		266.764519
								$\frac{1}{2}=133.3822595$		
赤野 498-2		-152610.000			-35770.000					
6	-152617.474	-7.474	+9.209	-35771.789	-1.789	-19.184		16.474901	143.381216	
7	628517	-18.517	+12.671	770668	-0.668	+16.978		81.464228	34.381628	
36	630145	-20.145	-9.209	788767	-18.767	+18.184		172.825303	386.461680	
35	619308	-9.308	-12.671	789852	-19.852	-16.978		251.544692	158.031224	
								424.369995	24.939129	301.412440
								788.843306		788.843306
								399.430866		399.430866
								$\frac{1}{2}=179.715433$		

面積計算書

工
区

ブ
ロ
ック

計
算
者



精
算
者



備
考

点	①	②	③	④	⑤	⑥	③ ×	⑤	② ×	①
	X	X-(定数)	X _{n-1} -X _{n+1}	Y	Y-(定数)	Y _{n-1} -Y _{n+1}	+	-	+	-
赤野 630-1		-152 620.000			-35 700.000					
34	152 630 803'	-10.803'	-30.766'	35 796 081'	-26.081'	-22.652'	1117.284246'	1117.284246'	244.209556'	
7	628 517'	-2.517'	+23.369'	770 668'	-10.668'	-28.018'		249.300492'	289.629306'	
8	654 172'	-34.172'	+28.911'	768 063'	-8.063'	+0.080'		233.109393'		2.733760'
9	657 428'	-37.428'	+5.311'	770 748'	-10.748'	+25.257'		57.092629'		945.318996'
10	659 483'	-39.483'	-26.625'	793 320'	-33.320'	+25.333'	887.145000'			1000.222839'
							2004.429246'	2004.429246'	559.492513'	483.838062'
							1464.755793'	1464.755793'		1948.275595'
							1464.755793'	1464.755793'		1464.736733'
							<u>1/2 = 732.4683665'</u>			
赤野 626-10		-152 620.000			-35 770.000					
30	152 624 340'	-4.340'	-35.921'	35 817 698'	-27.698'	-17.341'	984.939858'		75.259940'	
33	622 452'	-2.452'	+35.143'	796 885'	-6.885'	-24.378'		241.959555'	59.774856'	
10 34	659 483'	-39.483'	+38.634'	793 320'	-3.320'	+14.049'		128.264880'		554.696667'
11	661 086'	-41.086'	+38.6110'	810 934'	-20.934'	+20.906'	23.286740'			858.943916'
12	658 373'	-38.373'	-36.746'	814 226'	-24.226'	+6.764'	890.209596'	248.549944'		259.554972'
							1588.160759'	1588.160759'	135.034796'	1673.955555'
							1588.160759'	1588.160759'		1588.160759'
							<u>1/2 = 799.701095'</u>			
							<u>= 769.0803795'</u>			

面積計算書

工区

ブロック

/

計算者



積算者



備考

点	①	②	③	④	⑤	⑥	③ × ⑤	③ × ⑤
	X	X-(定数)	X _{n-1} -X _{n+1}	Y	Y-(定数)	Y _{n-1} -Y _{n+1}	+	-
栗野 624 625		-152 620.000			-35 870.000			
16	-152 667 982	-47.982	-43.547	-35 886 679	-16.679	+17.788	726.320413	853.523 816
39	623 192	-3.192	-42.930	870 812	-20.812	-9.484	893.459160	30.272928
25	625 052	-5.052	+11.664	877 195	-7.195	-14.799	83.922480	74.764548
19	634 856	-14.856	+41.687	876 013	-6.013	-4.171	250.663 931	61.964376
15	666 739	-46.739	+33.126	873 042 ²⁴	-3.042 ²⁴	+10.666	100.173 024	498.518174
							1619.779473	1352.021990
							1755.626906	1185.020138
							1685.222138	
							1320.874470	
							592.410069	
							1/2 = 660.438735	
栗野 626-(5)		-152 630.000			-35 820.000			
15	-152 666 739	-36.739	-24.957	-35 873 042 ²⁴	-53.042 ²⁴	+52.908	1323.319968	1943.787012
38	637 217	-7.217	-34.302	875 793	-55.793	-50.121	1913.811486	361.723257
37	632 437	-2.437	+21.700	822 903	-2.903	-55.592	62.994100	135.417704
13	658 917	-28.917	+29.737	820 201	-0.201	-0.018	5.977137	0.520506
14	662 174	-32.174	+7.822	822 885	-2.885	+52.823	22.566470	1699.527202
							3237.131454	497.721457
							3145.592747	3643.314215
							1/2 = 1572.7963735	3145.592747

面積計算書

工
区

ブ
ロ
ック

計
算
者



精
算
者

備
考

197

地 番 点	①	②	③	④	⑤	⑥	③	×	⑤	②	×	⑥
	X	X-(定数)	X _{n-1} -X _{n+1}	Y	Y-(定数)	Y _{n-1} -Y _{n+1}	+		-	+		-
15	-152 666.739	(-152.600)	-24.957	75 873.024	(-35.800)	+52.908	1822459968					3531027012
38	637.217		-31.429	875.793		-18.456	2382098197			686876952		
4-10	635.310		-4.780	854.568		-52.890	260835040			1867545900		
37	632.437		+23.607	822.903		-34.367		540671121	1114762379			
13	658.917		+27.737	820.201		-0.018		600717137	1060506			
14	662.174		+7.822	822.885		+52.823		179006470				3284217202
							4465393205	13203947283670	2457376815	244214		
							3144998477		3144998477			
							$\Delta = 15724992385$					

面積計算書

工
区

ブ
ロック

計
算
者



精
算
者



備
考

点	① X	② X-(定数)	③ $X_{n-1}-X_{n+1}$	④ Y	⑤ Y-(定数)	⑥ $Y_{n-1}-Y_{n+1}$	⑦ +	⑧ ×	⑨ -	⑩ +	⑪ ×	⑫ -
茨野 642-3 (A)												
22'	-152 607 618	-152 570 000 -37 618	-24.128	-35 938 800	-35 890 000 -48 800	+ 41.455	1178.411620					730.354190
VII	595 768	- 5.768	- 1.671	935 584	-45.584	- 44.420	76.170264			256.214560		
23'	605 947	-15.947	+17.845	994 420	- 4.420	- 40.875			78.874900	651.233625		
41'	613 613	-23.613	+12.949	894 709	- 4.901	- 0.299			65.685841	6.871383		
42'	619 896	-29.896	- 5.995	894 129	- 4.129	+ 44.131	24.753355					1319.340376
茨野 642-3 (B)												
37'	-152 623 192	610 000 -152 623	-11.014	-35 890 812	-35 870 000 -20 812	+ 14.462	229.223368					190.782704
K7	614 038	- 4.038	- 7.292	891 657	-21.657	- 12.514	157.922844			50.531532		
K8	615 900	- 5.900	+ 11.014	878 278	- 8.278	- 14.462			71.394172	85.325800		
25'	625 052	-15.052	+ 7.292	877 195	- 7.195	+ 12.514			52.465940			188.360728
							387.146212	143.860112		135.857332	399.143432	
							243.286100					243.286100
							$\frac{1}{2} = 121.643050$					

面積計算書

工
区

ブ
ロ
ック

計
算
者

精
算
者

備
考

点	①	②	③	④	⑤	⑥	③ × ⑤		② × ⑥	
	X	X-(定数)	$X_{n-1}-X_{n+1}$	Y	Y-(定数)	$Y_{n-1}-Y_{n+1}$	+	-	+	-
	淡野 642									
新Ⅵ	-152 633.047	(-152600) - 33.047	- 55.047	-35 945.926	(-35890) - 55.926	+ 16.683	3073.05382			551.323101
22	606.065	- 6.065	- 13.151	938.413	- 48.413	- 51.677	636.679368		313.542385	
42	619.896	- 19.896	+ 52.191	894.129	- 4.129	- 47.824		215.476639	951.506304	
43	658.256	- 58.256	+ 41.216	890.589	- 0.589	+ 27.601		24.276224		1607.923856
21	661.112	- 61.112	- 25.209	921.730	- 31.730	+ 55.237	799.881570			3375.643544
							4509.614755	239.772863	1265.048607	5534.890501
							4269.841892			4269.841892
							<u>$\frac{1}{2} = 2134.920946$</u>			
	淡野 642-3(1)									
22	-152 606.065	(-152590) - 16.065	- 24.128	-35 938.413	(-35890) - 48.413	+ 41.455	1168.108864			665.974575
Ⅶ	575.768	- 5.768	- 0.118	935.584	- 45.584	- 43.973	5.378912		253.751624	
23	605.947	- 15.947	+ 17.845	894.420	- 4.420	- 40.875		78.874900	651.833625	
41	613.613	- 23.613	+ 13.949	894.709	- 4.709	- 0.291		65.685841	6.871383	
42	619.896	- 29.896	- 7.548	894.129	- 4.129	+ 43.704	31.165692			1306.574784
							1204.653468	144.560741	912.456632	1972.547357
							1060.092727			1060.092727
							<u>$\frac{1}{2} = 530.0463635$</u>			

面積計算書

工
区

ブ
ロ
ック

計
算
者



精
算
者



備
考

点	① X	② X-(定数)	③ $X_{n-1}-X_{n+1}$	④ Y	⑤ Y-(定数)	⑥ $Y_{n-1}-Y_{n+1}$	⑦ +	⑧ ×	⑨ -	⑩ +	⑪ ×	⑫ -
X	道路 -152 498.600	(-152.490) - 8.600	7' +160.768	-35 830.525	(-35.810) - 20.525	- 20.430						
XI	661.358	171.358	+163.302	813.922	3.922	- 10.628						
XII	661.902	171.902	-151.189	819.897	9.897	+ 21.454	1496.317533					3687.985508
XIII	510.169	20.169	-161.322	835.376	25.376	+ 14.455	4093.707072					291.542895
K13	500.580	10.580	- 11.569	834.352	24.352	- 4.851	281.728288					
							5871.752893	3940.438894	51.323580	2048.214404		3979.528403
							1931.313999					1831.313999
							$\frac{1}{2} = 765.6569995$					3177.528403

面積計算書

工
区

ブ
ロ
ック

計
算
者



精
算
者



備
考

点	①	②	③	④	⑤	⑥	③ ×	⑤	② ×	③
	X	X-(定数)	$X_{n-1} - X_{n+1}$	Y	Y-(定数)	$Y_{n-1} - Y_{n+1}$	+	-	+	-
小堤		-152 600.000			-35 880.000					
17	-152 668 073	-68.073	-54.086	-35 887 675	-7.675	+ 5.995	415.110 050			408.097 635
40	613 896	-13.896	-61.635	892 674	-12.674	+ 4.759	781.161 990			66.131 064
24	606 438	-6.438	-7.212	892 434	-12.434	- 1.233	89.674 008			7.938 054
K6	606 684	-6.684	+ 7.600	891 444	-11.444	- 0.777		86.351 600		5.193 468
K7	614 038	-14.038	+ 61.298	891 657	-11.657	- 4.762		714.550 786		66.848 956
161	667 982	-67.982	+ 54.035	886 679	-6.679	- 3.982		260.899 765		270.704 324
							1285.946 048	1162.402 151	350.684 802	474.228 699
							123.543 897			123.543 897
							<u>1/2 = 61.771 9485</u>			

面積計算書

工
区

ブ
ロ
ック

計
算
者



精
算
者



備
考

点	①	②	③	④	⑤	⑥	③ ×	⑤	② ×	④
	X	X-(定数)	$X_{n-1}-X_{n+1}$	Y	Y-(定数)	$Y_{n-1}-Y_{n+1}$	+	-	+	-
角7)1		-152470.000			-35820.000					
X'	152499600	-9.600	-4.323	35830525	-10.525	-2.380	45,499,575		20,468,000	
26'	497261	-7.261	+2.984	827840	-7.840	-0.305		23,394,560	2,214,605	
27'	501584	-11.584	+1.339	830220	-10.220	+2.685		13,684,580		31,103,040
							45,499,575	37,079,140	22,682,605	31,103,040
							8,420,435			8,420,435
							$\frac{1}{2}=4,210,217.5$			
角7)2		-152650.000			-35810.000					
X'	152661358	-11.358	-2.713	35813922	-3.922	+3.272	10,640,886			37,390,536
12'	658373	-9.373	-0.272	814226	-4.226	-2.988	11,794,72		25,018,524	
11'	661086	-11.086	+2.985	810934	-0.934	-0.304		2,787,990	3,370,144	
							11,789,958	2,787,990	28,388,668	37,390,536
							9,001,868			9,001,868
							$\frac{1}{2}=4,500,934$			

面積計算書

工
区

ブ
ロ
ック

計
算
者



精
算
者



備
考

点	①	②	③	④	⑤	⑥	③ ×	⑤	② ×	④
	X	X-(定数)	$X_{n-1}-X_{n+1}$	Y	Y-(定数)	$Y_{n-1}-Y_{n+1}$	+	-	+	-
角切 3		-152 470.000			-35 780.000					
I'	152 476 440	- 6.440	+ 1.646	-35 786 091	- 6.091	- 2.988			10.025 786	19.242 720
Z'	479 425	- 9.425	+ 1.339	785 700	- 5.788	+ 2.685			7.750 132	25.306 125
1'	477 779	- 7.779	- 2.985	788 716	- 8.776	+ 0.304	26.196 360			2.357 037
							26.196 360	17.775 918	19.242 720	27.663 162
							8.420 442			8.420 442
							<u>1/2 = 4.210 221</u>			
角切 4		-152 650.000			-35 760.000					
IV'	152 657 156	- 7.156	+ 3.256	-35 767 760	- 7.760	+ 2.685			25.266 560	19.213 860
9'	657 428	- 7.428	- 2.984	770 760	- 10.748	+ 0.303	32.072 032			2.250 684
8'	654 172	- 4.172	- 0.272	768 063	- 8.063	- 2.988	2.193 136		12.465 936	
							34.265 168	25.266 560	12.465 936	21.464 544
							8.998 608			8.998 608
							<u>1/2 = 4.499 304</u>			

面積計算書

工
区

ブ
ロ
ック

計
算
者



精
算
者



備
考

点	①	②	③	④	⑤	⑥	③ ×	⑤	② ×	④
	X	X-(定数)	$X_{n-1}-X_{n+1}$	Y	Y-(定数)	$Y_{n-1}-Y_{n+1}$	+	-	+	-
水堀		(-132.605)			(-35.885)					
10	152 668 254	- 63.254	- 54.424 ⁶⁰	-35 889 666	- 4.666	+ 7.034	254.110360			444.928636
41	613 613	8.613	- 62.307	894 209	9.709	+ 4.754	604.938663			40.946202
23	605 947	0.947	- 7.175	894 420	9.420	- 2.275	67.588500			2.154425
24	606 438	1.438	+ 7.949	892 434	7.434	- 1.746		59.092866		2.510748
40	613 896	8.896	+ 61.635	892 674	7.674	- 4.759		472.986990		42.336064
17	668 073	63.073	+ 54.358	887 675	2.675	- 3.008		145.407650		189.723584
							926.637523		677.487506	236.724821
							2994			485.874834
							249.150017			249.150017
							$\frac{1}{2} = 124.5750085$			

面積計算書

工
区

ブ
ロ
ック

計
算
者



精
算
者



備
考

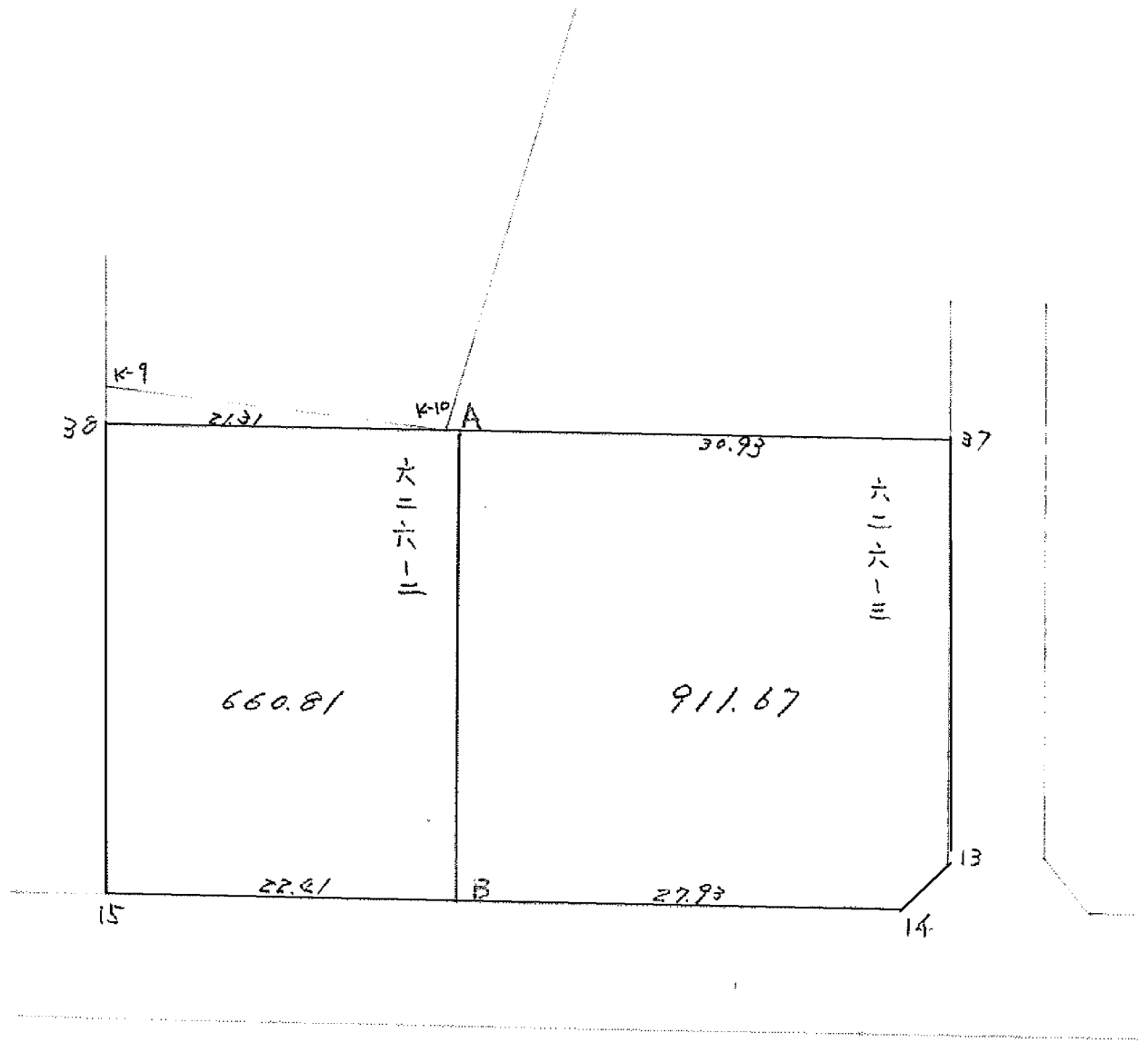
点	①	②	③	④	⑤	⑥	③ ×	⑤	② ×	④
	X	X-(定数)	$X_{n-1} - X_{n+1}$	Y	Y-(定数)	$Y_{n-1} - Y_{n+1}$	+	-	+	-
角切5		-152650.000			-35810.000					
XII'	-152661.902	-11.902	+ 3.257	-35819.897	- 9.897	+ 2.684		32.234529		31.944968
14'	662174	-12.174	- 2.985	822885	-12.885	+ 0.304	38.461725			3.700896
13'	658917	-8.917	- 0.272	820201	-10.201	- 2.988	2.774672		26.643996	
							41.236397	32.234529	26.643996	35.645864
							9.001868			9.001868
							<u>1/2=4.500934</u>			

計年月日
 計算者
 検査者
 藤原

B. No. / 各筆面積計算書

地番	算式	隅切	地積	摘要
630-1			732.46	
626-11)			769.08	
621				
622			3525.26	
629				
630-2			1089.10	
642-3(1)			530.04	
			567.32	
642-3(2)			121.64	
627			1783.90	
628			1458.64	
624				
625			592.51	
626-4)			1572.99	1572.49
642			2134.92	
			2134.94	
640-1			9591	
641-5			7591	
478-2			19971	
小堤			6177	
水路			12457	
道路			96565	
木			10617	
木(1)			472.52	1-1-2 133.38
(2)			459.21	1-1-3 91.38
(3)			133.38	609-1(1) 420.11
角切 1		4.21		609-2(1) 420.85
2		4.50		
3		4.21		
4		4.49		
5		4.50		

21.91' 16174.46
 16157.10
 16179.01
 計 16216.37
 16178.83
 16216.17
 差 0.19



面積計算書

工区

ブロック

計算者

精算者

備考

626-2

点	①	②	③	④	⑤	⑥	③ × ⑤		② × ⑥	
	X	X - (定数)	X _{n-1} - X _n	Y	Y - (定数)	Y _{n-1} - Y _n	+	-	+	-
38	-152 637.217	-152.630 7.217	-31.507	-35 875.793	-35.850 25.793	-19.318		212.66051		39.418006
A	635.232	5.232	+27.68P	853.706	3.706	-25.0P3	101.874274			121.286576
B	664.706	34.706	+31.507	850.700	0.700	+19.318	22.054950			690.450508
15	666.739	36.739	-27.68P	873.024	23.024	+25.0P3		632.906736	921.8P1727	
							123.928134	1445.566787	15P2.742235	790.704582
								1321.637653	1321.677653	
							/2 = 660.81			
38	-152 637.217	-152 600.000	-31.42P	-35 875.793	-35 800.000	-18.456	2382.0P8197			
K-10	635.310		-1.985	854.568		-22.087	108.317480			
A	635.232		+2P.396	853.706		-3.868		1578.741576		
B	664.706		+31.507	850.700		+19.318		1597.404900		
15	666.739		-27.48P	873.024		+25.0P3	2007.356736			
							4497.792413	3176.146476		
							1321	625937		
							660	81		

