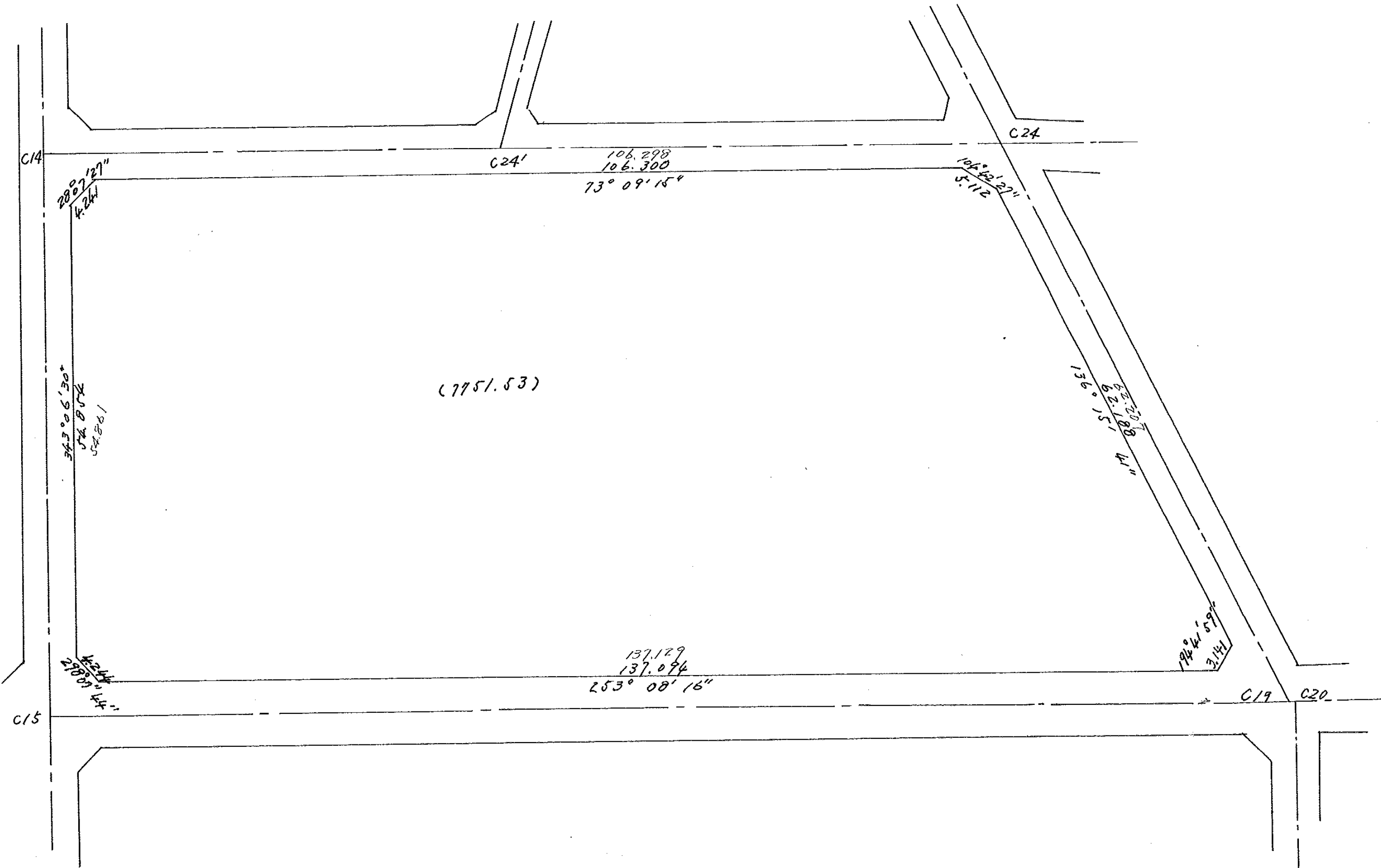
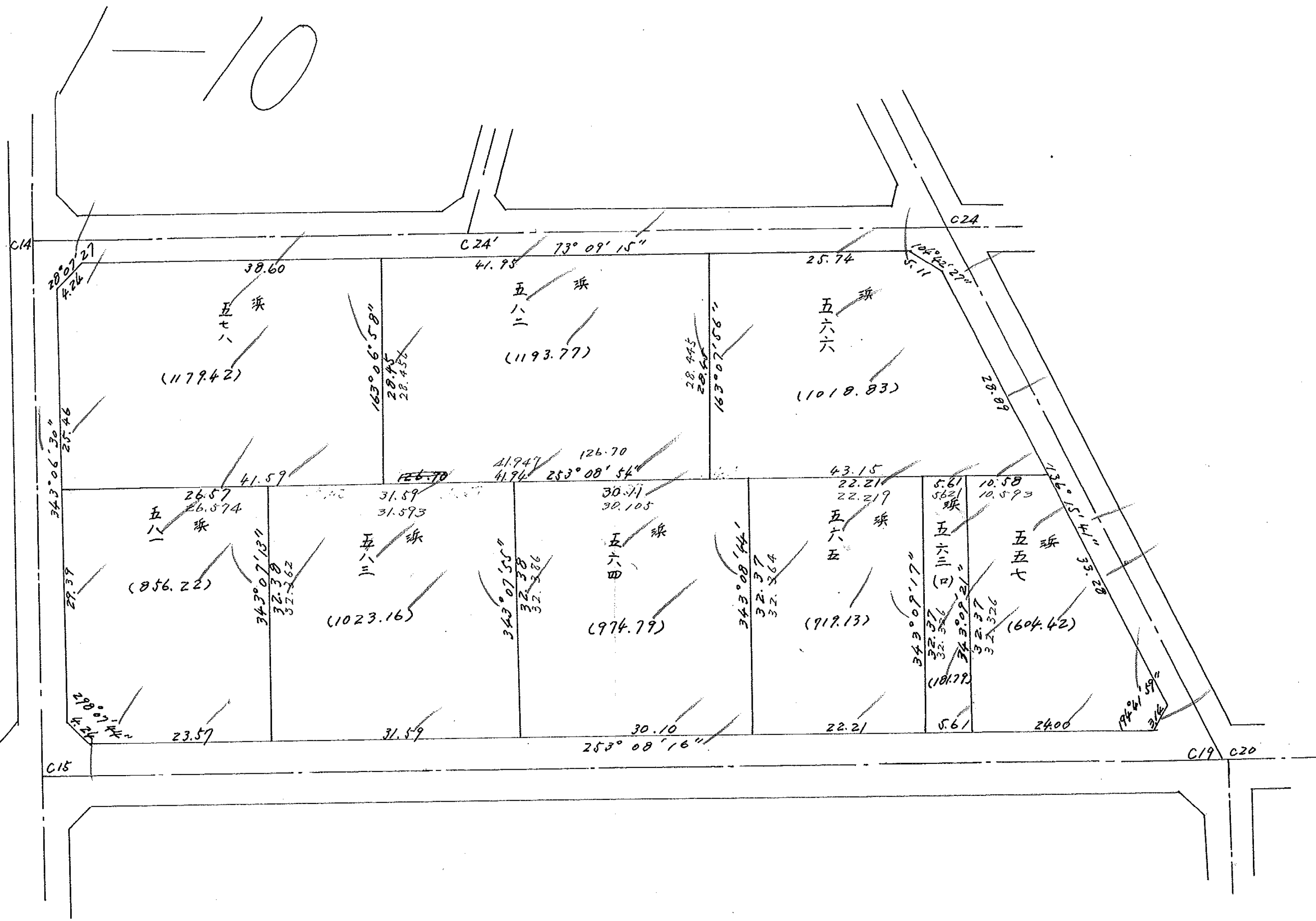


1-10



10



C14

C24

C24'

73° 09' 15"

25.74

104° 42' 27"

5.11

28° 07' 27"

4.26

38.60

五七八

(1179.42)

163° 06' 58"

28.45  
28.456

五八二

(1193.77)

28.445  
28.55

163° 07' 56"

五六六

(1010.83)

28.89

343° 06' 30"

25.46

41.59

五八一

(856.22)

343° 07' 13"

32.38  
32.362

五八三

(1023.16)

343° 07' 55"

32.38  
32.386

五六四

(974.79)

343° 08' 44"

32.37  
32.364

五六五

(919.13)

343° 09' 17"

32.37  
32.386

五六三

(181.79)

343° 09' 21"

32.37  
32.326

五五七

(604.42)

173° 15' 41"

3.28

41.94

253° 08' 54"

五六四

(974.79)

43.15

22.21  
22.219

五六五

(919.13)

5.61  
5.621

五六三

(181.79)

10.58  
10.593

五五七

(604.42)

C15

253° 08' 16"

23.57

31.59

30.10

22.21

5.61

24.00

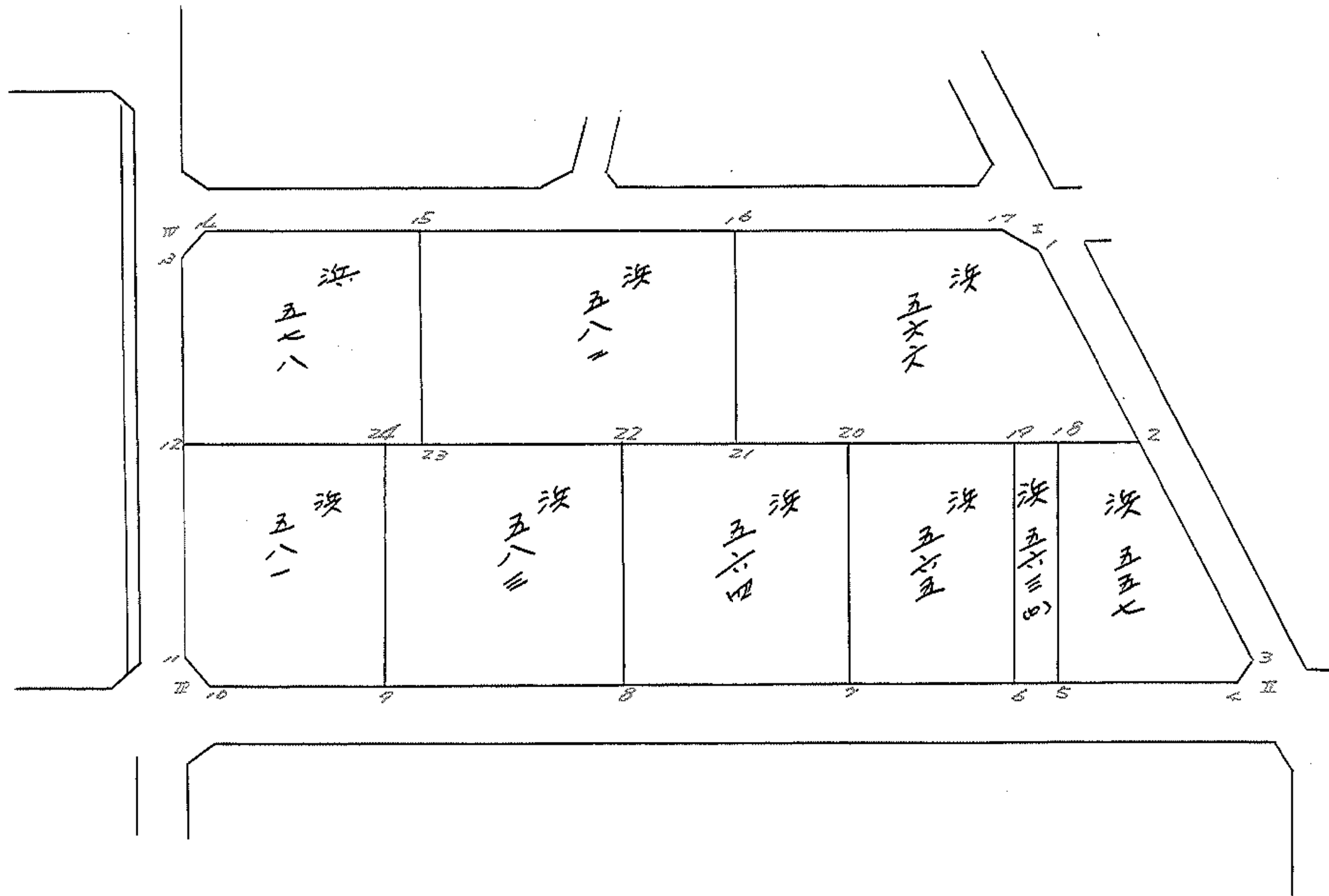
194° 41' 59"

31.42

C19

C20

10Block.



面積計算書

工  
区

/

ブロック

10

計  
者



精  
者



備  
考

点	①	②	③	④	⑤	⑥	③ × ⑤	② × ⑥
	X	X-(定数)	$X_{n-1}-X_{n+1}$	Y	Y-(定数)	$Y_{n-1}-Y_{n+1}$		
I	-152521436	-21436	+16.722	-25527770	-127.770	-154.624	2,136.5699	3314.5201
II	-152570702	-70702	+90.773	-25420627	-80.627	+89.799	7,318.7547	6,248.9689
III	-152612209	-112209	-16.722	-25617569	-217.569	+154.624	3,638.1888	17,250.2044
IV	-152553980	-53980	-90.773	-25625251	-225.251	-89.799	2,254.4390	12,247.2500
							24,992.6278	9,455.3246
							16,537.3032	8,161.8701
								28,699.1733
								16,537.3032
								$\frac{1}{2} = 7,768.6516$

面 算 計 算 書

区

ブック

10

計 算 者



算 算 者



備 考

点	①	②	③	④	⑤	⑥	③ × ⑤	② × ⑥
	X	X-(定数)	X <sub>n-1</sub> -X <sub>n+1</sub>	Y	Y-(定数)	Y <sub>n-1</sub> -Y <sub>n+1</sub>		
<del>1</del>	<del>566.</del>							
	-152.	(152.500)		-35	(35.500)			
1	523.603	-23.603	+22.178	525.696	-25.696	-24.925	569.805888	588.304775
2	544.483	-44.483	+33.391	505.716	-5.716	+21.326	190.862956	948.644458
21	556.994	-56.994	-14.718	547.022	-47.022	+49.562	672.069796	2824.736628
16	529.765	-29.765	-34.689	555.278	-55.278	-16.381	1917.538542	487.580465
17	522.305	-22.305	-6.162	530.641	-30.641	-29.582	188.809842	659.826510
							2792.418180	760.743844
							2037.669336	1735.711750
								3773.381086
								2037.669336
								1/2=1018.834668
<del>16</del>	<del>582</del>							
	-152.	(152.500)		-35	(35.500)			
16	529.765	-29.765	+15.070	555.278	-55.278	-48.412	833.039460	1440.983180
21	556.994	-56.994	+39.390	547.022	-47.022	+31.891	1852.196580	18175.654
23	569.155	-69.155	-15.070	587.169	-87.169	+48.412	1213.636830	3347.931860
15	541.924	-41.924	-39.390	595.434	-95.434	-31.891	3759.145260	1336.998284
							5072.782090	2685.236040
								2777.981464
								5165.527514
								2387.546050
								2387.546050
								1/2=1193.773025

面積計算書

工  
区

1

ブロック

10

計測者



写植者



備考

点	①	②	③	④	⑤	⑥	③ × ⑤	② × ⑥
	X	X-(定数)	X <sub>n-1</sub> -X <sub>n+1</sub>	Y	Y-(定数)	Y <sub>n-1</sub> -Y <sub>n+1</sub>		
改訂 678								
	-152.	(152500)		-35	(35500)			
15	541.924	-41.924	+16.044	595.434	-95.434	-45.211	1531.143096	1895.425764
23	569.155	-67.155	+39.290	587.169	-87.169	+31.547	3424.870010	2181.632785
12	581.214	-81.214	-12.304	626.981	-126.981	+47.210	1562.374224	3834.112940
13	556.851	-56.851	-28.103	634.379	-134.379	+5.399	3776.453037	306.938549
14	553.111	-53.111	-14.927	632.380	-132.380	-38.945	1976.036260	2068.407895
							7814.863521	4956.013106
							3963.833859	6322.684274
							2358.850415	2358.850415
							<u>1/2 = 1179.4252075</u>	
改訂 557								
	-152.	(152500)		-35.	(35400)			
2	544.483	-44.483	+20.981	505.716	-105.716	-33.149	2218.027396	1474.566967
3	568.534	-68.534	+27.089	482.701	-82.701	-22.218	2240.287389	1522.688412
4	571.572	-71.572	+10.001	483.498	-83.498	+23.769	835.063498	1701.194868
5	578.535	-78.535	-24.019	506.470	-106.470	+32.352	2557.302930	2540.964320
18	547.553	-47.553	-34.052	515.850	-115.850	-0.757	8944.924200	35.854962
							6502.227130	5293.378283
							3033.110341	4241.959188
							1208.848847	1208.848847
							<u>1/2 = 604.4244235</u>	

面算計算書

工  
区

/

ノ  
マ  
ク

10

計  
算  
者



監  
査  
者



備  
考

点	①	②	③	④	⑤	⑥	③	X	⑤	②	X	⑥
	X	X-(定数)	X <sub>n-1</sub> -X <sub>n+1</sub>	Y	Y-(定数)	Y <sub>n-1</sub> -Y <sub>n+1</sub>	+		-	+		-
淡路 563(P)												
18	<sup>-152</sup> 547.553	(152500) -47.553	+19.354	<sup>-35</sup> 515.850	(35500) -15.850	-14.755				465.260900		701.644515
5	578.535	-78.535	+32.611	506.470	-6.470	-4.006				210.993170		314.611210
6	580.164	-80.164	-29.354	511.844	-11.844	+14.755	347.668776					1182.819820
19	549.181	-49.181	-32.611	521.225	-21.225	+4.006	692.168475					197.019086
							1039.837251		676.254070	1016.255725		1379.838906
							363.583181					363.583181
												<u>1/2 = 181.7915905</u>
淡路 565												
19	<sup>-152</sup> 549.181	(152500) -49.181	+24.543	<sup>-35</sup> 521.225	(35500) -21.225	-30.643				520.925175		1507.053383
6	580.164	-80.164	+37.425	511.844	-11.844	+11.875				443.261700		951.947500
7	586.606	-86.606	-24.543	533.100	-33.100	+30.643	812.373300					2653.867658
20	555.621	-55.621	-37.425	542.487	-42.487	-11.875	1590.075975					660.499375
							2402.449275		964.186875	2167.552758		3605.815158
							1438.262400					1438.262400
												<u>1/2 = 719.131200</u>

面積計算書

工  
区

1

ブロック

10

計  
者



標  
者



備  
考

点	①	②	③	④	⑤	⑥	③ × ⑤	② × ⑥
	X	X-(定数)	X <sub>n-1</sub> -X <sub>n+1</sub>	Y	Y-(定数)	Y <sub>n-1</sub> -Y <sub>n+1</sub>		
波野 564								
20	<sup>-152</sup> 555.621	(-152.500) -55.621	+22.256	<sup>-35</sup> 542.487	(35.500) -42.487	-38.204	745,390672	2124,944684
7	586.606	-86.606	+39.717	533.100	-33.100	+19.421	1314,632700	1681,915126
8	595.338	-95.338	-22.256	561.908	-61.908	+38.204	1577,824448	3642,292952
22	564.350	-64.350	-39.717	571.304	-71.304	-19.421	2831,980968	1249,741350
							4209,805416	2260,223372
							3374,416034	5324,268078
							1949,582044	1949,852044
							<u>1/2=974,791022</u>	
波野 583								
22	<sup>-152</sup> 564.350	(-152.500) -64.350	+21.828	<sup>-35</sup> 571.304	(35.500) -71.304	-39.637	1556,423712	2550,640950
8	595.338	-95.338	+40.152	561.908	-61.908	+20.837	2485,770016	1986,557906
9	604.502	-104.502	-21.828	592.141	-92.141	+39.637	2011,253748	4142,145774
24	573.510	-73.510	-40.152	601.545	-101,545	-20,837	4077,234840	1531,727870
							6088,488588	4042,153728
							4082,368820	6128,703680
							2046,334860	2046,334860
							<u>1/2=1023,167430</u>	



面積計算書

工  
区

/

ブロック

10

計測者



標置者



備考

点	①	②	③	④	⑤	⑥	③ × ⑤	② × ⑥		
	X	X-(定数)	X <sub>n-r</sub> -X <sub>n+1</sub>	Y	Y-(定数)	Y <sub>n-r</sub> -Y <sub>n+1</sub>			+	-
波野 681										
24	573.510 <sup>-752</sup>	-73.510 <sup>(+52.500)</sup>	+23.288 <sup>-35</sup>	601.545	-101.545 <sup>(-35.500)</sup>	-34.840		2364.779960	2561.088400	
9	604.502	-104.502	+37.829	592.141	-92.141	+13.153		3485.601889	1374.514806	
10	611.339	-111.339	+4.836	614.698	-114.698	+26.300		1554.679528	2928.215700	
11	609.338	-109.338	-30.125	618.441	-118.441	+12.283	3568.035125		1342.998654	
12	581.214	-81.214	-35.828	626.981	-126.981	-16.896	4547.475268		1372.191744	
							8117.510393	6405.061377	5933.280144	5645.729160
							1712.449016		1712.449016	
							<u>1/2 = 856.224508</u>			
筒切 (1)										
I	521.436 <sup>-752</sup>	-21.436 <sup>(+52.500)</sup>	+1.298 <sup>-35</sup>	527.770	-27.770 <sup>(-35.500)</sup>	-4.945		36.045460	106.001020	
1	523.603	-23.603	+0.869	525.696	-25.696	+2.871		22.329824	87.764213	
17	522.305	-22.305	-2.167	530.641	-30.641	+2.074	66.399047		46.260570	
							66.399047	58.375284	106.001020	114.024783
							8.023763		8.023763	
							<u>1/2 = 4.0118815</u>			

# 面積計算書

工区

/

ブロック

10

計算者

藤原

精算者

高橋

備考

点	①	②	③	④	⑤	⑥	③ ×	⑤	② ×	⑥
	X	X - (定数)	X <sub>n-1</sub> - X <sub>n-1</sub>	Y	Y - (定数)	Y <sub>n-1</sub> - Y <sub>n+1</sub>	+	-	+	-
①										
②										
③	568.534	-68.534	-0.870	482.701	-82.701	-2.871	71.949870		196.761114	
④	570.702	-70.702	+3.038	480.627	-80.627	+0.797		244.944826		56.349494
⑤	571.572	-71.572	-2.168	483.498	-83.498	+2.074	181.023664			148.440328
⑥							252.973534	244.944826	196.761114	204.789822
⑦							8.028708			8.028708
⑧										
⑨										
⑩										
⑪	611.339	-11.339	+2.871	614.698	-14.698	-0.872		42.197958	9.887608	
⑫	612.209	-12.209	-2.001	617.569	-17.569	+3.743	35.155569			45.698287
⑬	609.338	-9.338	-0.870	618.441	-18.441	-2.871	16.043670		26.809398	
⑭							51.199239	42.197958	36.697006	45.698287
⑮							9.001281			9.001281
⑯										
⑰	553.111	-53.111	+2.871	632.380	-32.380	-0.872		92.962980	46.312792	
⑱	556.851	-56.851	+0.869	634.379	-34.379	+2.871		29.875351		163.219221
⑲	553.980	-53.980	-3.740	635.251	-35.251	-1.999	131.838740		107.906020	
⑳							131.838740	122.838331	154.218812	163.219221
㉑							9.000409			9.000409
㉒										

1/2 = 4.5002045

