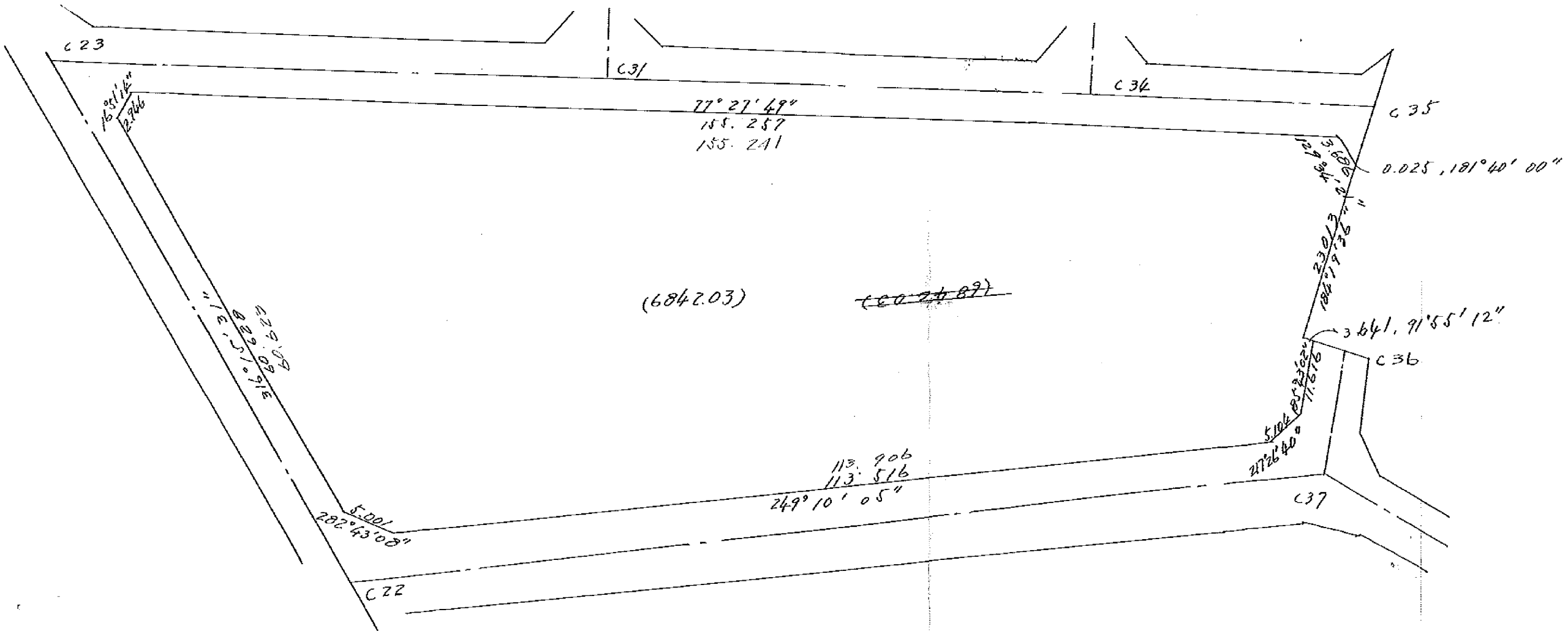
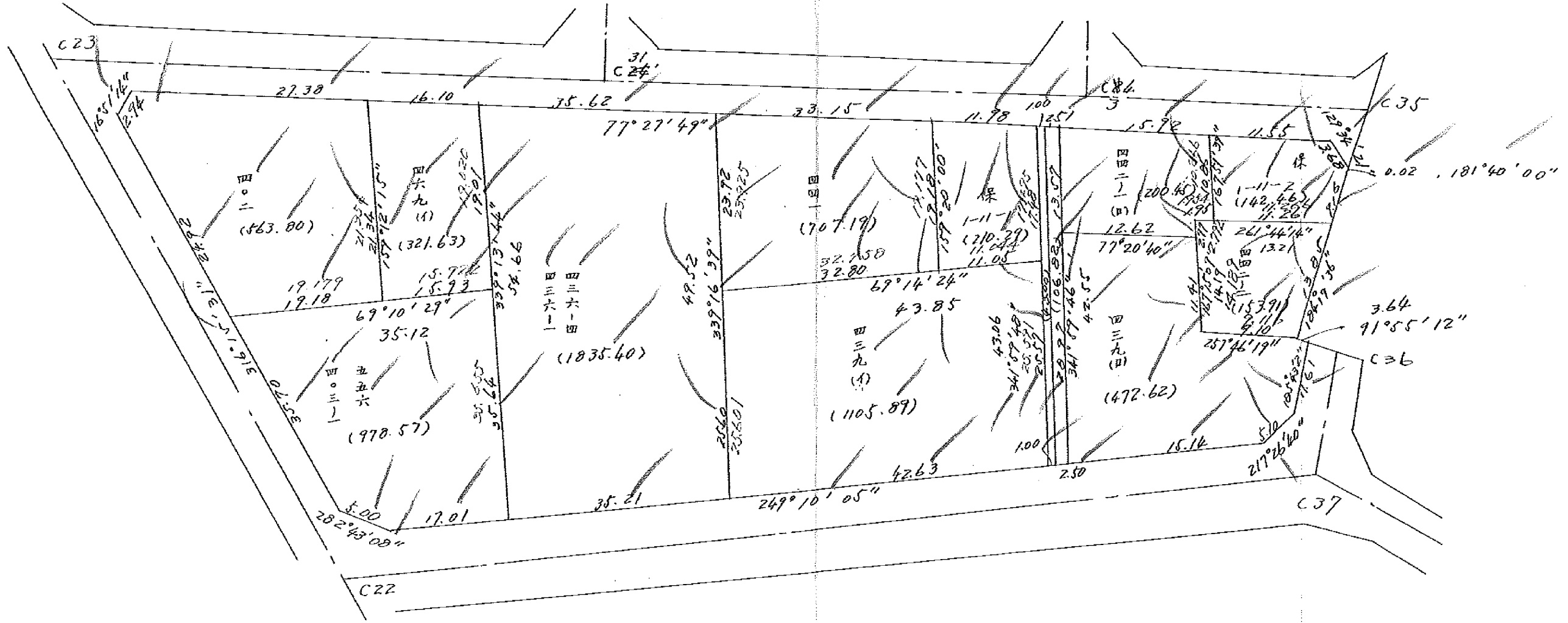
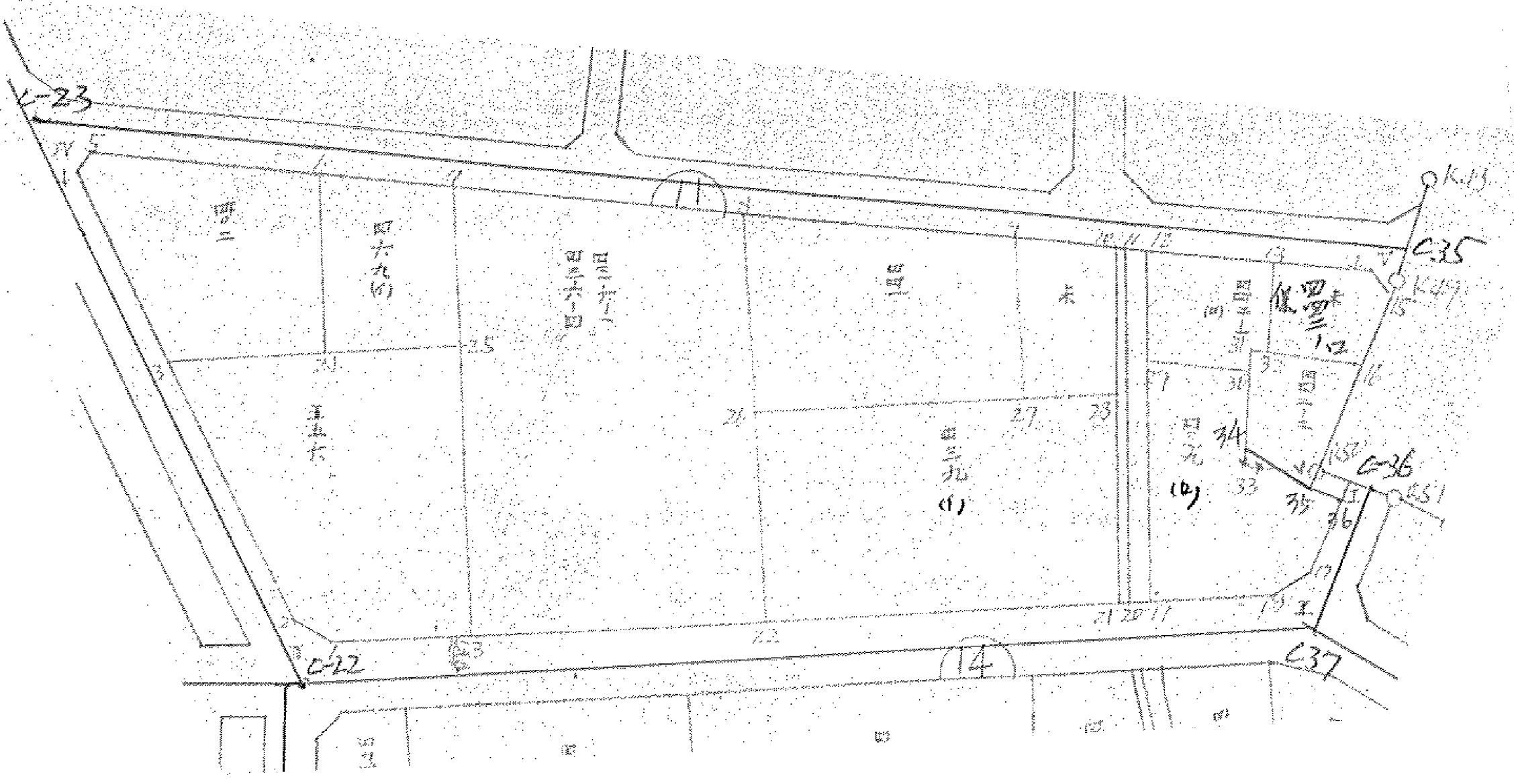


1-11







面積計算書

工区 / ブロック // 計算者 精算者 備考

点	①	②	③	④	⑤	⑥	③ × ⑤	② × ①
	X	X-(定数)	$X_{n-1} - X_{n+1}$	Y	Y-(定数)	$Y_{n-1} - Y_{n+1}$	+	-
I	-152.507.526	-27.526	+14.665	-35349.119	-9.119	-2.193	133.730135	60.087250
II	-522.069	-42.069	+57.046	-350.575	-10.575	+113.159	603.261450	4760.485971
III	-564.572	-84.572	-3.634	-462.278	-122.278	+157.790	688.914252	13342.924440
IV	-516.435	-36.435	-83.139	-500.345	-160.345	-111.345	3796.034955	4056.855075
V	-481.433	-1.433	-31.970	-350.933	-10.933	-157.324	349.615474	225.445292
K 49	-484.457	-4.457	+25.971	-351.021	-11.021	+1.825	286.226391	8.134025
K 50	-507.404	-27.404	+23.069	-352.750	-12.750	-1.902	294.314302	57.122408
							15034.564601	13717.532270
							13717.032403	13717.032403
							$\times \frac{1}{2} = 6858.5162015$	

面積計算書

工
区

ブ
ロ
ック

計
算
者

精
算
者

備
考

点	① X	② X-(定数)	③ $X_{n-1}-X_{n+1}$	④ Y	⑤ Y-(定数)	⑥ $Y_{n-1}-Y_{n+1}$	⑦ +	⑧ -	⑨ +	⑩ ×
糸野 442-1 (D)										
12	-152 488.050	- 8.051	- 16.370	- 35 380.689	- 20.689	- 11.350	338 678 980			91.378 850
13	- 484 593	- 4.593	+ 7.161	- 365.142	- 5.142	- 17.833		36.821 862		81.906 969
32	- 495.212	- 15.212	+ 10.900	- 362.856	- 2.856	- 0.352		31.120 400		5.354 624
31	- 495.493	- 15.493	+ 2.986	- 364.790	- 4.790	+ 1.322		14.302 940		20.481 746
30	- 498.190	- 18.190	+ 5.470	- 364.178	- 4.178	+ 11.702		22.853 660		212.952 996
29	- 500.963	- 20.963	- 10.147	- 376.492	- 16.492	+ 16.511	167.244 324			346.120 093
							506.023 254	105.108 862	178.640 443	579.554 835
							400.914 392			
							$\times 1/2 = 200.457 196$			

糸野 442-2

16	152 488.050	- 8.051	+ 12.908	351.713	- 1.713	- 11.967	22.111 604			42.997 658
16	508.601	18.601	+ 16.091	362.833	2.833	+ 10.091	62.719 801		186.684 491	
32	508.691	18.691	- 12.908	361.806	11.806	+ 11.967		162.266 032	223.688 289	
31	495.493	5.493	- 15.091	364 790	16.790	- 10.091		223.284 630		55.429 863
							66.33 206	376.650 662	609.172 778	98.603 321
							210.769 657	310.769 657		
							$1/2 = 155.38$			

面積計算書

工
区

/

プロ
ット

//

計
算
者



精
算
者



備
考

浜野439(口)

	X	X - (定数)	X _{n-1} - X _n	Y	Y - (定数)	Y _{n-1} - Y _n	+	-	+	-
29	500.963	5.963	- 30.314	376.692	31.692	- 3.368		966.963608		10.073956
30	498.198	3.198	+ 7.128	364.178	19.178	- 16.688	18.207684			16.912226
33	508.691	13.691	+ 10.203	361.806	16.806	- 11.365	171.451212			155.326396
36	508.401	13.401	- 0.169	352.833	7.833	- 12.585		1.303919		168.651635
37	508.622	13.622	+ 10.683	349.219	4.219	- 2.557	45.071571			31.676966
37	519.084	26.084	+ 16.614	360.276	5.276	+ 4.160	77.103666		100.189660	
38	523.136	28.136	+ 9.638	363.379	8.379	+ 17.260	79.081002		185.627360	
39	528.622	33.622	- 22.173	367.536	12.536	+ 23.113		199.690728	776.793986	
							620.914839	1655.99993	620.610986	625.667912
								935.063076	935.063076	
							y ₂ = 467.53			

面積計算書

工区 /

ブロック //

計算者

精算者

備考

442-2

439 (ア)

1100

1000

点	①	②	③	④	⑤	⑥	③ × ⑤		② × ⑥	
	X	X-(定数)	X _{n-1} -X _{n+1}	Y	Y-(定数)	Y _{n-1} -Y _{n+1}	+	-	+	-
16	-152 493.594	-152.490 3.594	+ 12.908	351.713	-35.350 1.713	-11.957		22.11404	42.973458	
35	508.401	18.401	+ 15.097	352.833	2.833	+ 10.091		42.769801	185.684491	
34	508.691	18.691	- 12.908	361.804	11.804	+ 11.957	152.366032		223.488287	
31	495.493	5.493	- 15.097	364.790	14.790	- 10.091	223.284630		554.29863	
							375.650662	64.881205	98.403321	409.172778
							310.769457			310.769457
							1/2 = 155.3847285			
17	-152 519.084	-152.490 29.084	+ 14.614	350.276	-35.340 10.276	+ 4.160		150.173464	120.989440	
18	523.136	33.136	+ 9.438	353.379	13.379	+ 17.260		126.271002	571.927360	
19	528.522	38.522	- 22.173	367.536	27.536	+ 23.113	610.555728		890.358986	
29	500.963	10.963	- 30.324	376.492	36.492	- 3.338	1106.583408		36.813754	
30	498.198	8.198	+ 7.728	364.178	24.178	- 14.688		186.847584	120.412224	
34	508.691	18.691	+ 10.203	361.804	21.804	- 11.345		222.466212	212.049395	
35	508.401	18.401	- 0.169	352.833	12.833	- 12.585	2.168777		231.576585	
36	508.522	18.522	+ 10.683	349.219	9.219	- 2.557		98.486577	47.360754	
							1719.307913	784.244839	648.212712	1583.275786
							935.063074			935.063074

1/2 = 467.531537

面積計算書

工区 /

ブロック //

計算者



概算者



備考

点	①	②	③	④	⑤	⑥	③ × ⑤		② × ⑥	
	X	X-(定数)	$X_{n-1}-X_{n+1}$	Y	Y-(定数)	$Y_{n-1}-Y_{n+1}$	+	-	+	-
保 1-11-2		(-152480.000)			(-35350.000)					
13	-152484.593	-4.593	-13.120	-35365.142	-15.142	-8.995	198.784176		41.214025	
14	-482.084	-2.084	0.161	-353.061	-3.061	-14.122	0.621621		29.430248	
15	-484.432	-4.432	2.373	-351.020	-1.020	-2.840		2.420460	12.586880	
附 49	-484.457	-4.457	9.162	-351.021	-1.021	+0.693		9.254402		3.088701
16	-493.594	-13.594	10.755	-351.713	-1.713	+11.035		10.423215		160.884990
22	-495.212	-15.212	9.001	-362.856	-12.856	+13.429	115.716856			204.281940
							315.122653	30.198177	83.331165	368.255639
							284.924476			
							$\sum 2 = 142.462238$			
保 1-11-1		(-152480.000)			(-35370.000)					
9	-152491.414	-11.414	-20.549	-35395.819	-25.819	-4.928	530.554631		56.248192	
10	-488.813	-8.813	14.031	-384.121	-14.121	-17.103		198.131751	150.728739	
28	-505.445	-25.445	20.549	-378.716	-8.716	+4.928		177.105084		125.392960
27	-509.362	-29.362	14.031	-389.049	-19.049	+17.103	267.276519			502.178286
							797.831150	377.236835	206.976931	627.571246
							420.594315			
							$\sum 2 = 210.2971575$			

分筆後の座標なし

面積計算書

工
区

/

ブ
ロ
ック

11

計
算
者

1980

精
算
者

藤原

備
考

点	①	②	③	④	⑤	⑥	③ × ⑤		② × ④	
	X	X-(定数)	$X_{n-1} - X_{n+1}$	Y	Y-(定数)	$Y_{n-1} - Y_{n+1}$	+	-	+	-
小堤										
		(-152480.000)			(-35360.000)					
10	-152480.813	- 8.813	- 41.174	-35384.121	- 24.121	+ 12.329	993.158054			108.655477
11	- 188.575	- 8.575	+ 40.600	-383.140	- 23.140	- 14.246		937.484000	122.444370	
20	- 529.413	- 49.413	+ 41.174	- 369.875	- 9.875	- 12.329		406.593250	689.212877	
21	- 529.769	- 49.769	- 40.600	- 370.811	- 10.811	+ 14.246	438.926600			707.009174
							1432.084654	1346.077250	731.657277	817.664651
							86.007404			
							$\times \frac{1}{2} = 43.003702$			
水路										
		(-152480.000)			(-35360.000)					
11	-152480.575	- 8.575	- 41.363	-35383.140	- 23.140	+ 10.814	957.139820			92.946330
12	- 480.050	- 8.050	+ 39.927	- 380.689	- 20.689	- 15.604		826.049703	125.612200	
19	- 528.522	- 48.522	+ 41.363	- 367.536	- 7.536	- 10.814		311.711568	524.716908	
20	- 529.413	- 49.413	- 39.927	- 367.875	- 9.875	+ 15.604	394.279125			771.040452
							1351.418945	1137.761271	650.329108	863.986782
							213.657674			
							$\times \frac{1}{2} = 106.828837$			

面積計算書

工
区

ブ
ロ
ック

計
算
者



精
算
者



備
考

点	①	②	③	④	⑤	⑥	③ × ⑤		② × ⑤	
	X	X-(定数)	$X_{n-1}-X_{n+1}$	Y	Y-(定数)	$Y_{n-1}-Y_{n+1}$	+	-	+	-
茨野 441		(-152 490.000)			(-35 380.000)					
8	-152 490.611	- 0.611	- 29.574	-35 420.186	- 48.186	- 23.901	1925.052764		205.811511	
9	- 491.414	- 1.414	+ 10.751	- 395.819	- 15.819	- 39.137		170.079069	55.339718	
27	- 509.362	- 19.362	+ 29.574	- 389.049	- 9.049	+ 23.901		267.615126	462.771162	
26	- 520.980	- 30.980	- 10.751	- 419.720	- 39.720	+ 39.137	427.029720		1212.777356	
							1052.082484	437.685195		
							1414.397289		261.151229	1675.548518
							$\times 1/2 = 707.1986445$			
茨野 429 (A)		(-152 500.000)			(-35 370.000)					
26	-152 520.980	- 20.980	- 39.487	-35 419.720	- 49.720	- 31.946	1963.293640		670.482648	
20	- 505.445	- 5.445	+ 0.781	- 370.716	- 8.716	- 48.909		76.535196	266.309505	
21	- 529.769	- 29.769	+ 39.487	- 370.811	- 0.811	+ 31.946		32.023957	751.000474	
22	- 544.932	- 44.932	- 0.781	- 410.662	- 40.662	+ 48.909	357.053022		2197.579188	
							2320.346662	108.539153	936.792153	3148.579662
							2211.787589			
							$\times 1/2 = 1105.8937945$			

第	I区		ブロック		所	在			
板	辺	長	方	向	角	COS SIN	X	Y	延
							-152520 988	-35419 720	26
63	851	69	1x	2x		0.1542562 0.9870773	-152505 445	-35398 716	28
25	576	161	59	48		-0.9510785 0.3390778	-152529 769	-35370 811	21
42	638	249	10	05		-0.7556281 -0.9346295	-152544 932	-35410 662	22
25	600	339	16	39		0.7352051 -0.7538231	-152520 988	-35419 720	26
							1105	8937545	
							-152520 988	-35419 720	26
25	650	19	1x	2x		0.1542562 0.9870773	-152511 896	-35395 735	A
12	740	151	59	48		-0.9510785 0.3390778	-152524 012	-35391 798	B
15	200	19	1x	2x		0.1542562 0.9870773	-152516 627	-35377 584	C
12	837	161	59	48		-0.9510785 0.3390778	-152530 836	-35373 616	E
39	637	249	10	05		-0.7556281 -0.9346295	-152544 932	-35410 662	22
25	600	339	16	39		0.7352051 -0.7538231	-152520 988	-35419 720	26
							875	786111	
							-152511 896	-35395 735	A
18	200	69	1x	2x		0.1542562 0.9870773	-152505 445	-35378 716	28
25	576	161	59	48		-0.9510785 0.3390778	-152529 769	-35370 811	21
9	001	249	10	05		-0.7556281 -0.9346295	-152530 836	-35373 616	E
12	837	161	59	48		-0.9510785 0.3390778	-152518 627	-35377 584	C
15	200	249	1x	2x		-0.3542542 0.9350733	-152524 012	-35391 798	B
12	740	341	59	48		0.9510785 -0.3090773	-152511 896	-35395 735	A
							270	106801	

面積計算書

工
区

ブ
ロ
ック

計
算
者



精
算
者



備
考

点	①	②	③	④	⑤	⑥	③ × ⑤		② × ⑥	
	X	X-(定数)	$X_{n-1}-X_{n+1}$	Y	Y-(定数)	$Y_{n-1}-Y_{n+1}$	+	-	+	-
数野 402		(-152500.000)			(-35490.000)					
3	-152536.611	-36.611	-11.187	-35489.037	-19.037	+35.166	212.966917			1287.462426
4	-518.603	-18.603	-20.827	-506.270	-36.270	+16.379	755.395290			304.698597
5	-515.784	-15.784	-8.764	-505.416	-35.416	-27.589	310.385824			435.464776
6	-809.839	-9.839	+14.006	-478.681	-8.681	-34.312		121.586086		337.595768
24	-529.790	-29.790	+26.772	-471.104	-1.104	+10.256		29.556288		308.505240
							1278.748033	151.142374	773.060544	1900.666203
							1127.605659			1127.605659
							x 1/2	563.8028295		
数野 469 (1)		(-152500.000)			(-35450.000)					
6	-152509.839	-9.839	-23.448	-35478.681	-28.681	-8.148	672.512088			80.168172
7	-506.342	-6.342	+14.286	-462.756	-12.956	-22.470		185.089416		142.504740
25	-524.125	-24.125	+23.448	-456.211	-6.211	+8.148		145.605528		196.570500
24	-529.790	-29.790	-14.286	-471.104	-21.104	+22.470	301.491744			669.381300
							974.003032	300.724944	222.672912	865.951800
							643.278888		643.278888	
							321.639444			

面積計算書

工
区

ブ
ロ
ック

//

計
算
者



測
算
者



備
考

点	①	②	③	④	⑤	⑥	③ × ⑤	② × ⑥		
	X	X-(定数)	$X_{n-1}-X_{n+1}$	Y	Y-(定数)	$Y_{n-1}-Y_{n+1}$	+	-		
							+	-		
隅切 II										
II	-152522.069	^(-152515.000) -7.069	+ 4.052	-35350.575	^(-35352.000) -0.575	+ 3.103		2.329900	21.935107	
18	-523.136	-8.136	-2.905	-353.379	-5.379	-0.299	10.086315		2.432664	
17	-519.084	-4.084	-1.067	-350.276	-0.276	-2.804	0.294492		11.451536	
							10.380807	2.329900	13.884200	21.935107
							8.050907			
							× 1/2 = 4.0254535			
隅切 III										
III	-152564.572	^(-152560.000) -4.572	-1.101	-35462.278	^(-35450.000) -12.278	+ 4.878	13.518078		22.303216	
2	-562.404	-2.404	-1.067	-464.352	-14.352	-2.804	15.313584		6.740816	
1	-563.505	-3.505	+ 2.168	-459.474	-9.474	-2.074		20.539632	7.269370	
							28.831662	20.539632	14.010186	22.303216
							8.292030			
							× 1/2 = 4.146015			

面積計算書

工
区

ブ
ロ
ック

計
算
者



積
算
者



備
考

点	①	②	③	④	⑤	⑥	③ × ⑤	② × ⑤
	X	X-(定数)	$X_{n-1}-X_{n+1}$	Y	Y-(定数)	$Y_{n-1}-Y_{n+1}$	+	-
隅切 IV		(-152810.000)			(-35500.000)			
IV	-152516.435	- 6.435	- 2.819	-35508.345	- 8.345	- 0.854	23.524555	5.495490
5	- 515.784	- 5.784	+ 2.168	- 505.416	- 5.416	- 2.075	11.741898	12.001800
4	- 518.603	- 8.603	+ 0.651	- 506.270	- 6.270	+ 2.929	4.081770	25.198187
							23.524555	15.823650
								17.497270
								25.198187
								7.700897
								$\times 1/2 = 3.8504485$
隅切 V		(-152480.000)			(-35350.000)			
V	-152481.433	- 1.433	+ 2.348	-35350.933	- 0.933	- 2.841	2.190684	4.071153
15	- 484.432	- 4.432	+ 0.651	- 351.020	- 1.020	+ 2.928	0.664020	12.976896
14	- 482.084	- 2.084	- 2.999	- 353.861	- 3.861	- 0.087	11.579139	0.181308
							11.579139	2.854704
								4.252461
								12.976896
							8.724435	
								$\times 1/2 = 4.3622175$

面積計算書

工
区

ブ
ロ
ック

計
算
者



精
算
者



備
考

点	①	②	③	④	⑤	⑥	③ ×	⑤	② ×	⑥
	X	X-(定数)	$X_{n-1}-X_{n+1}$	Y	Y-(定数)	$Y_{n-1}-Y_{n+1}$	+	-	+	-
改野	403-1 556									
		(-152520.000)			(-35440.000)					
1	-152563.505	-43.505	+4.950	-35459.474	-19.474	+20.702		96.376300		904.126910
2	-562.404	-42.404	-26.894	-464.352	-24.352	+29.563	654.922688			1253.589452
3	-536.611	-16.611	-38.279	-489.037	-49.037	-8.141	1077.087323		135.230151	
25	-524.125	-4.125	+20.843	-456.211	-16.211	-45.467		337.885873	187.551375	
23	-557.454	-37.454	+39.380	-443.570	-3.570	+3.263		140.586600		122.212402
							2532.010011	574.868773	322.701526	2279.922764
							1957.141238			
							978.570619			
									分筆後の座標なし	
改野	436-1 436-4									
		(-152490.000)			(-35410.000)					
7	-152506.342	-16.342	-58.843	-35462.956	-52.956	-15.384	3116.089908		251.405328	
8	-478.611	-8.611	+38.590	-428.186	-18.186	-52.294		701.797740	450.303634	
22	-544.932	-54.932	+58.843	-410.662	-0.662	+15.384		38.954066		845.073888
23	-557.454	-67.454	-38.590	-443.570	-33.570	+52.294	1295.466300			2527.439476
							4411.556208	740.751806	701.708962	4372.512354
							3670.804402			
							$X/2 = 1835.402201$			

計年月日 算日	計 算 者	檢 查 者
------------	-------------	-------------

B. №. 11 各筆面積計算書

地番	算式	隅切	地積	摘要
402			563.80	
467(1)			321.63	
403-1 556			978.57	
436-1 436-4			1035.40	
441			707.17	
437(1)			1105.87	
442-1(P)			200.45	
437(B)			472.62	467.5
442-2 保			153.91	155.38
1-11-1 保			210.27	
1-11-2			142.46	
水路			106.82	
小堤			43.00	
隅切 II		4.02		
" III		4.14		
" IV		3.85		
" V		4.36		
		16.37	6842.03	計 6858.40
				全 6858.51
				差 -0.11