

面積計算書

工
区

/

ブ
ロ
ック

14

計
算
者



精
算
者



備
考

点	①	②	③	④	⑤	⑥	⑦ × ⑧	⑨ × ⑩		
	X	X-(定数)	$X_{n-1}-X_{n+1}$	Y	Y-(定数)	$Y_{n-1}-Y_{n+1}$	+	-	+	-
I	-152 634.220	$1(-152520)$ -114.220	$\frac{696}{-38.289}$ -38.289	-35 440.387	$1(-35260)$ -180.387	+ 80.031	698.0225352			9141.140820
II	571.791	- 51.791	- 104.723	458.754	- 198.754	- 92.784	20814.115142			4805376144
III	529.497	- 9.497	- 26.588	347.603	- 87.603	- 178.776	2327188.564			1697.835672
IV	545.203	- 25.203	+ 36.959	279.978	- 19.978	- 78.727		738.366902	1984.156581	
V	566.456	- 46.456	+ 30.422	268.876	- 8.876	+ 8.223		270.025672		382.007688
118.3'	575.625	- 55.625	+ 17.682	288.201	- 28.201	+ 37.423		498.650082		2081.654375
119.4'	584.138	- 64.138	+ 16.924	306.299	- 46.299	+ 36.243		783.564276		2324.553534
119.5'	592.549	- 72.549	+ 16.674	324.444	- 64.444	+ 36.358		1074.539256		2637.736542
VI	600.812	- 80.812	+ 15.311	342.657	- 82.657	+ 48.061		1265.561327		3883.905332
VII	607.860	- 87.860	+ 9.675	372.505	- 112.505	+ 36.066		1088.485875		3168.758760
VIII	610.487	- 90.487	+ 26.360	378.723	- 118.723	+ 67.882		3127.538280		6142.438534
							30123559058	8848.731670	8487.388377	27762.195785
							21274827388			21274.827388
							$\frac{1}{2} = 10637.413694$	$+ 18.754 = 10656.16$		

面積計算書

工区 / ブロック 14 計算者 精算者 備考

点	① X	② X-(定数)	③ $X_{r-1}-X_{r+1}$	④ Y	⑤ Y-(定数)	⑥ $Y_{r-1}-Y_{r+1}$	③ ×	⑤	② ×	⑥
							+	-	+	-
凍野 462-②										
16	⁻¹⁵² 539.901	⁽⁻¹⁵²⁵³⁰⁾ - 9.901	- 17.065	⁻³⁵ 302.804	⁽⁻³⁵²⁷⁰⁾ - 32.804	- 24.941	559.800260		246.940841	
17	544.524	- 14.524	+ 7.961	282.900	- 12.900	- 24.215		102.694900	351.698660	
18	547.862	- 17.862	+ 14.176	278.589	- 8.589	- 9.973		121.757664	178.137726	
19	558.700	- 28.700	+ 22.343	272.927	- 2.927	- 1.816		65.377961	52.119200	
20	570.205	- 40.205	+ 16.925	276.773	- 6.773	+ 15.274		114.633025		614.091170
49.3	575.625	- 45.625	+ 10.415	288.201	- 18.201	+ 22.047		189.563415		1005.894375
21	580.620	- 50.620	- 14.036	298.820	- 28.820	+ 19.640	404.517520			994.176800
44	561.589	- 31.589	- 40.719	307.841	- 37.841	+ 3.984	1540.847677			125.850576
							2505.165459	594.048965	828.896427	2740.012921
							1911.116494			1911.116494
							$\frac{1}{2} = 955.558247$			

面積計算書

工
区

1

ブロック

14

計算者



精算者



備考

点	①	②	③	④	⑤	⑥	③ × ⑤		② × ⑥		
	X	X-(定数)	X _{n-1} -X _{n+1}	Y	Y-(定数)	Y _{n-1} -Y _{n+1}	+	-	+	-	
	凍野 461-1(2)										
45	-152 530.865	(-152.530) 0.865	-22.957	-35 351.198	(-35.330) 21.198	+7.830	486.642486			6.772950	
13	530.564	0.564	-0.689	350.407	20.407	-6.517	14.0660423			3.675588	
14	530.176	0.176	+1.979	344.681	14.681	-15.913		29.039018		2.800688	
15	532.542	2.542	+24.053	334.494	4.494	-5.150		108.094182		13.091300	
43	554.229	24.229	+20.979	339.531	9.531	+8.083		199.950847		195.843007	
42	553.521	23.521	-23.364	342.577	12.577	+11.667	293.849028			274.419507	
							794.551937	337.084049	19.567576	477.835464	
							457.467888			457.467888	
							$\frac{1}{2} = 228.733944$				
	凍野 477-1										
15	-152 532.542	(-152.530) 2.542	-14.328	-35 334.494	(-35.300) 34.494	-36.727	494.230032			93.360034	
16	539.901	9.901	+29.047	302.804	2.804	-26.653		81.447788		263.891353	
44	561.589	31.589	+14.328	307.841	7.841	+36.727		112.345848		1160.169203	
43	554.229	24.229	-29.047	339.531	39.531	+26.653	1148.256257			645.775537	
							1642.486787	193.793636	357.251387	1805.944740	
							1448.693353			1448.693353	
							$\frac{1}{2} = 724.3466765$				

面積計算書

工
区

1

ブ
ロ
ック

14

計
算
者



精
算
者



備
考

点	①	②	③	④	⑤	⑥	③ ×	⑤	② ×	③
	X	X-(定数)	X _{n-1} -X _{n+1}	Y	Y-(定数)	Y _{n-1} -Y _{n+1}	+	-	+	-
浜野 477-2										
12	-152 535.560	(-152530) - 5.560	- 27.270	-35 363.537	(-35340) - 23.537	+ 0.396	641.853970			2.201760
45	530.865	0.865	+ 17.961	351.198	- 11.198	- 20.960		201.127278	18.130000	
42	553.521	- 23.521	+ 27.270	342.577	- 2.577	- 0.396		70.274790	9.314316	
41	558.135	- 28.135	- 17.961	350.802	- 10.802	+ 20.960	194.014722			589.709600
							835.868712	271.402068	27.404716	591.911360
							564.466604	211.971198		564.466604
							623.902514			
							1/2 = 282.233322			
浜野 476										
41	-152 558.135	(-152550) - 8.135	- 41 - 36.537	-35 350.802	(-35290) - 60.802	+ 12.603	2525.532614			102.525405
42	553.521	- 3.521	+ 3.454	342.577	- 52.577	- 42.961		181.600758	151.265681	
44	561.589	- 11.589	+ 27.099	302.841	- 12.841	- 43.757		483.473259	507.071873	
21	580.620	- 30.620	+ 22.549	298.820	- 8.820	- 1.542		178.882180	47.216040	
119.4'	584.138	- 34.138	+ 11.929	306.299	- 16.299	+ 25.624		194.430771		874.752112
119.5'	592.549	- 42.549	+ 18.920	324.044	- 34.044	+ 23.675		376.128.480		1007.347575
22	598.058	- 48.058	- 34.414	329.974	- 39.974	+ 26.358	1325.665236			1187.638764
							3901.197910	1434.515648	705.581594	3172.263856
							7577.187910	1262.295648		3040.473856
							2334.892262	1/2 = 1167.446131		2334.892262
							2466.682262	1/2 = 1233.341131		2466.682262

面積計算書

工
区

1

ブ
ロ
ック

14

計
算
者



精
算
者



備
考

点	① X	② X-(定数)	③ $X_{n-1}-X_{n+1}$	④ Y	⑤ Y-(定数)	⑥ $Y_{n-1}-Y_{n+1}$	③ × ⑤ +	⑤ -	② × ④ +	④ -
水路										
11	-152 536.459	(-152530) - 6.459	- 60.535	-35 365.900	(-35320) - 45.900	+ 31.277	2778.556500			202.018123
12	535.560	- 5.560	+ 58.599	363.537	- 43.537	- 35.926		2551.224663	199.748560	
22	595.058	- 65.058	+ 60.535	329.974	- 9.974	- 31.277		603.776090	2034.819066	
23	596.075	- 66.075	- 58.599	332.260	- 12.260	+ 35.926	718.423740			2374.528970
							3476.980240	3155.000753	2234.567626	2576.527113
							$\frac{1}{2} = 341.979487$			341.979487
							$\frac{1}{2} = 170.9897435$			
小堤										
10	-152 536.819	(-152530) - 6.819	- 60.051	-35 366.845	(-35330) - 36.845	+ 32.726	2212.579095			223.158594
11	536.459	- 6.459	+ 59.276	365.900	- 35.900	- 34.585		2128.008400	223.384575	
23	596.075	- 66.075	+ 60.051	332.260	- 2.260	- 32.726		135.715260	2163.024770	
24	596.510	- 66.510	- 59.276	333.174	- 3.174	+ 34.585	188.142024			2300.248350
							2400.721117	2263.723660	2386.409485	2523.406744
							136.977459			136.977459
							$\frac{1}{2} = 68.4987295$			

面積計算書

工
区

/

ブ
ロ
ック

14

計
算
者



精
算
者



備
考

点	①	②	③	④	⑤	⑥	③ × ⑤		② × ⑥	
	X	X-(定数)	$X_{n-1}-X_{n+1}$	Y	Y-(定数)	$Y_{n-1}-Y_{n+1}$	+	-	+	-
	浪野	478								
9	⁻¹⁵² 541.015	⁽⁻¹⁵²⁵³⁰⁾ - 11.015	- 29.795	⁻³⁵ 377.874	⁽⁻³⁵³³⁰⁾ - 27.874	- 2.363	830.227070		26.029445	
10	536.819	- 6.819	+ 45.035	366.845	- 16.845	- 38.799		758.614575	264.570381	
40	586.050	- 56.050	+ 56.118	339.075	+ 10.925	- 9.689	613.089150		543.068450	
39	592.937	- 62.937	- 19.446	357.156	- 7.156	+ 30.133	139.155576			1896.480621
38	566.604	- 36.604	- 51.922	369.208	- 19.208	+ 20.718	997.317716			758.361672
							2579.789590	758.614575	833.667276	2654.842793
							1821.175017			1821.175017
							$\frac{1}{2} = 910.5875085$			
	464-5									
39	⁻¹⁵² 592.937	⁽⁻¹⁵²⁵⁴⁰⁾ - 52.937	- 17.084	⁻³⁵ 357.156	⁽⁻³⁵³³⁰⁾ - 27.156	- 13.415	463.933104		710.109855	
40	586.050	- 46.050	+ 3.573	339.075	- 9.075	- 23.982		32.424975	1104.371100	
24	596.510	- 56.510	+ 14.762	333.174	- 3.174	+ 3.582		46.854588		202.418820
VI	600.812	- 60.812	+ 6.624	342.657	- 12.657	+ 19.316		83.839968		1194.644592
25	603.134	- 63.134	- 7.875	352.490	- 22.490	+ 14.479	177.108750			915.379866
							621.041854	163.119531	1814.520753	2292.043278
							477.922323			477.922323
							$\frac{1}{2} = 238.9611615$			

面積計算書

工
区

1

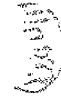
ブ
ロ
ック

14

計
算
者



精
算
者



備
考

点	① X	② X-(定数)	③ $X_{n-1}-X_{n+1}$	④ Y	⑤ Y-(定数)	⑥ $Y_{n-1}-Y_{n+1}$	③ × ⑤ +	⑤ -	② × ⑥ +	⑥ -	
	凍野 437-1										
8	-152 555.682	(-152.540) - 15.682	- 45.515	-35 416.418	(-35.360) - 56.418	- 26.806	2567.865270		420.371692		
9	541.015	- 1.015	+ 10.922	377.874	- 17.874	- 47.210		1195.219828	47.918150		
38	566.604	- 26.604	+ 33.341	369.208	- 9.208	+ 11.707		307.003928		311.453028	
37	574.356	- 34.356	+ 13.367	389.581	- 29.581	+ 18.236		395.409227		616.516016	
36	579.971	- 39.971	+ 12.174	387.444	- 27.444	+ 15.099		334.103256		603.522129	
35	586.530	- 46.530	- 24.289	404.680	- 44.680	+ 28.994	1085.232520			1348.160220	
							3653.097790	-1231.936239	468.289842	2889.651373	
							2421.361551			2421.361551	
							$\times \frac{1}{2} = 1210.680775$				
	凍野 480-1										
7	-152 567.813	(-152.550) - 17.813	- 42.980	-35 448.301	(-35.400) - 48.301	- 20.147	2075.976980		358.878511		
8	555.682	- 5.682	+ 18.717	416.418	- 16.418	- 43.621		307.295706	247.854522		
35	586.530	- 36.530	+ 42.980	404.680	- 4.680	+ 20.147		201.146400		735.969910	
32	598.662	- 48.662	- 18.717	436.565	- 36.565	+ 43.621	1684.387105		2122.686102		
							2760.364085	-508.442106	606.733000	2858.655912	
							2251.921979			2251.921979	
							$\times \frac{1}{2} = 1125.9609895$				

面積計算書

工区

1

ブロック

14

計算者



精算者



備考

点	①	②	③	④	⑤	⑥	③ × ⑤		② × ④	
	X	X-(定数)	X _{n-1} -X _{n+1}	Y	Y-(定数)	Y _{n-1} -Y _{n+1}	+	-	+	-
	凍野 549									
33	-152 598.044	(-152590) - 8.044	- 34.012	-35 434.937	(-35410) - 24.937	+ 0.977	848.225268			7.875.076-
34	594.067	- 4.067	+ 26.093	424.489	- 14.489	- 21.892		378.061477	89.034764-	
27	624.137	- 34.137	+ 34.012	413.047	- 3.047	- 0.977		103.634564	33.420123-	
28	628.079	- 38.079	- 26.093	423.510	- 13.510	+ 21.892	352.516430			833.625468-
							1200.741678	481.696041	122.454887	84.500544-
							719.045657			719.045657
							$\frac{1}{2} = 359.5228285 + 0.16 = 359.68$			
	凍野 481(1)									
34	-152 594.067	(-152570) - 24.067	- 44.166	-35 424.489	(-35370) - 54.489	- 25.603	2406.561174			616.187401-
36	579.971	- 9.971	+ 15.353	387.444	- 17.444	- 48.251		267.817732	481.110721-	
26	609.420	- 39.420	+ 30.516	376.238	- 6.238	- 8.721		190.358808	343.781820-	
VIII	610.487	- 40.487	+ 14.717	378.723	- 8.723	+ 36.809		128.376391		1490.285983-
27	624.137	- 54.137	- 16.420	413.047	- 43.047	+ 45.766	706.831940-			2477.633902-
							3113.392914	586.552931	1441.079742	3967.919925
							2526.839983			2526.839983
							$\frac{1}{2} = 1263.4199915 + 3.216 = 1266.63$			

面積計算書

工区

1

ブロック

14

計算者



積算者



備考

点	①	②	③	④	⑤	⑥	③ ×	⑤	② ×	④
	X	X-(定数)	$X_{n-1}-X_{n+1}$	Y	Y-(定数)	$Y_{n-1}-Y_{n+1}$	+	-	+	-
凍野 494-1										
6	-152 570.724	(-152560) - 10.724	- 6.856	-35 455.950	(-35440) - 15.950	- 9.606	109.353200		103.014744	
7	567.813	- 7.813	+ 9.923	448.301	- 8.301	- 12.532		82.370823	97.912516	
30	580.647	- 20.647	+ 17.193	443.418	- 3.418	+ 6.565		58.765674		135.547555
4	585.006	- 25.006	- 5.978	454.866	- 14.866	+ 14.489	88.868948			362.311934
5	574.669	- 14.669	- 14.282	457.907	- 17.907	+ 1.084	255.747774			15.901196
							453.969922	141.136477	200.927260	513.760687
							312.833425			312.833425
							$\frac{1}{2} = 156.4167125$			
凍野 548-2										
4	-152 585.006	(-152580) - 5.006	- 13.281	-35 454.866	(-35440) - 14.866	- 8.823	177.435346		44.167938	
30	580.647	- 0.647	+ 4.308	443.418	- 3.418	- 14.745		14.724744	9.540015	
31	589.314	- 9.314	+ 13.281	440.121	- 0.121	+ 8.823		1.607001		82.177422
3	593.928	- 13.928	- 4.308	452.241	- 12.241	+ 14.745	52.734228			205.368360
							250.167574	16.331745	53.707953	287.545782
							233.837829			233.837829
							$\frac{1}{2} = 116.9189145$			

面積計算書

工
区

1

ブ
ロ
ック

14

計
算
者



補
算
者



備
考

点	①	②	③	④	⑤	⑥	③ ×	⑤	② ×	④
	X	X - (定数)	$X_{n-1} - X_{n+1}$	Y	Y - (定数)	$Y_{n-1} - Y_{n+1}$	+	-	+	-
	凍野 548-1									
3	⁻¹⁵² 593.928	⁽⁻¹⁵²⁵⁸⁰⁾ -13.928	-14.236	⁻³⁵ 452.241	⁽⁻³⁵⁴³⁰⁾ -22.241	-9.289	316.622876		129.377192	
31	589.314	-9.314	+4.734	440.121	-10.121	-15.676		47.912814	146.006264	
32	598.662	-18.662	+14.236	436.565	-6.565	+9.289		93.459340		173.351318
2	603.550	-23.550	-4.734	449.410	-19.410	+15.676	91.886940			369.169800
							408.507816	141.372154	275.383456	502.521118
							267.137662			267.137662
							$\frac{1}{2} = 133.568831$			
	凍野 543									
2	⁻¹⁵² 603.550	⁽⁻¹⁵²⁵⁹⁰⁾ -13.550	-27.782	⁻³⁵ 449.410	⁽⁻³⁵⁴²⁰⁾ -29.410	-7.918	817.068620		107.288900	
33	598.044	-8.044	+24.529	434.939	-14.939	-25.900		366.438731	208.337600	
28	628.079	-38.079	+33.214	423.510	-3.510	-2.785		116.581140	106.050015	
29	631.258	-41.258	-2.253	432.154	-12.154	+19.347	27.382962			798.218526
1	625.826	-35.826	-27.708	442.857	-22.857	+17.256	633.321756			618.213456
							1477.773338	483.019871	421.678515	1416.431982
							994.753467			994.753467
							$\frac{1}{2} = 497.3767335 + 0.10 = 497.48$			

面積計算書

工区

/

ブロック

14

計算者



精算者



備考

点	① X	② X-(定数)	③ $X_{n-1}-X_{n+1}$	④ Y	⑤ Y-(定数)	⑥ $Y_{n-1}-Y_{n+1}$	③ ×	⑤	② ×	④
							+	-	+	-
	浜野 479-1									
37	-152 574.356	(-152360) - 14.356	- 42.816	-35 389.581	(-35350) - 39.581	- 7.030	1694.700096		100.922680	
38	566.604	- 6.604	+ 28.778	369.208	- 19.208	- 37.091			557.767824	244.948964
25	603.134	- 43.134	+ 41.256	352.490	- 2.490	+ 3.297			102.727440	142.212798
Ⅷ	607.860	- 47.860	+ 6.286	370.505	- 22.505	+ 23.748			141.466430	1136.579280
26	609.420	- 49.420	- 33.504	376.238	- 26.238	+ 17.076	879.077952			843.895920
							2573.778048	796.961694	345.871644	2122.687998
							1776.816354			1776.816354
							$\times \frac{1}{2} = 888.408177$			
	角切									
I	-152 634.220	(-152620) - 14.220	- 5.432	-35 440.387	(-35430) - 10.387	+ 10.703	56.422184			152.196660
1	625.826	- 5.826	- 2.962	442.857	- 12.857	- 8.233	38.082434		47.965458	
29	631.258	- 11.258	+ 8.394	432.154	- 2.154	- 2.470			18.080676	27.807260
							94.504618	18.080676		
							76.423942		75.772718	152.196660
							$\times \frac{1}{2} = 38.211971$			76.423942

面積計算書

工
区

1

ブロック

14

計算者



精算者



備考

点	①	②	③	④	⑤	⑥	③ × ⑤		② × ⑥	
	X	X-(定数)	$X_{n-1} - X_{n+1}$	Y	Y-(定数)	$Y_{n-1} - Y_{n+1}$	+	-	+	-
	角切									
II	⁻¹⁵² 571.791	(-152570) - 1.791	- 3.945	⁻³⁵ 458.754	(-35450) - 8.754	- 1.957	34.534530			3.504987
6	570.724	- 0.724	+ 2.978	455.950	- 5.950	- 0.847		17.124100		0.613228
5	574.669	- 4.669	+ 1.067	457.907	- 7.907	+ 2.804		8.436769		13.091876
							34.534530	- 25.560869	- 4.118215	13.091876
							8.973661			8.973661
							$\frac{1}{2} = 4.4868305$			
	角切									
II	⁻¹⁵² 529.497	(-152520) - 9.497	- 0.388	⁻³⁵ 347.603	(-35340) - 7.603	- 5.726	2.949964			54.379822
14	530.176	- 10.176	+ 1.067	344.681	- 4.681	+ 2.804		4.994627		28.533504
13	530.564	- 10.564	- 0.679	350.407	- 10.407	+ 2.922	7.066353			30.868008
							10.016317	4.994627	54.379822	59.401512
							5.021690			5.021690
							$\frac{1}{2} = 2.510845$			

面積計算書

工
区

1

ブロック

14

計算者



精算者



備考

点	①	②	③	④	⑤	⑥	③ ×	⑤	② ×	⑥
	X	X-(定数)	$X_{n-1} - X_{n+1}$	Y	Y-(定数)	$Y_{n-1} - Y_{n+1}$	+	-	+	-
角切										
15	⁻¹⁵² 545.203	(-152540) - 5.203	+ 3.338	⁻³⁵ 279.978	(-35270) - 9.978	- 4.311			33.306564	22.430133
18	547.862	- 7.862	- 0.679	278.589	- 8.589	+ 2.922	5.831931			22.972764
17	544.524	- 4.524	- 2.659	282.900	- 12.900	+ 1.389	34.301100			6.283836
							40.133031	- 33.306564	22.430133	29.256600
							6.826467			6.826467
							$\frac{1}{2} = 3.4132335$			
角切										
16	⁻¹⁵² 566.456	(-152550) - 16.456	+ 11.505	⁻³⁵ 268.876	(-35260) - 8.876	+ 3.846			102.118380	63.289776
20	^{570.205} 558.700	- 20.205	- 7.756	276.773	- 16.773	+ 4.051	130.091388			81.850455
19	558.700	- 8.700	- 3.749	272.927	- 12.927	- 7.897	48.463323			68.703900
							178.554711	- 102.118380	68.703900	145.140231
							76.436331			76.436331
							$\frac{1}{2} = 38.2181655$			

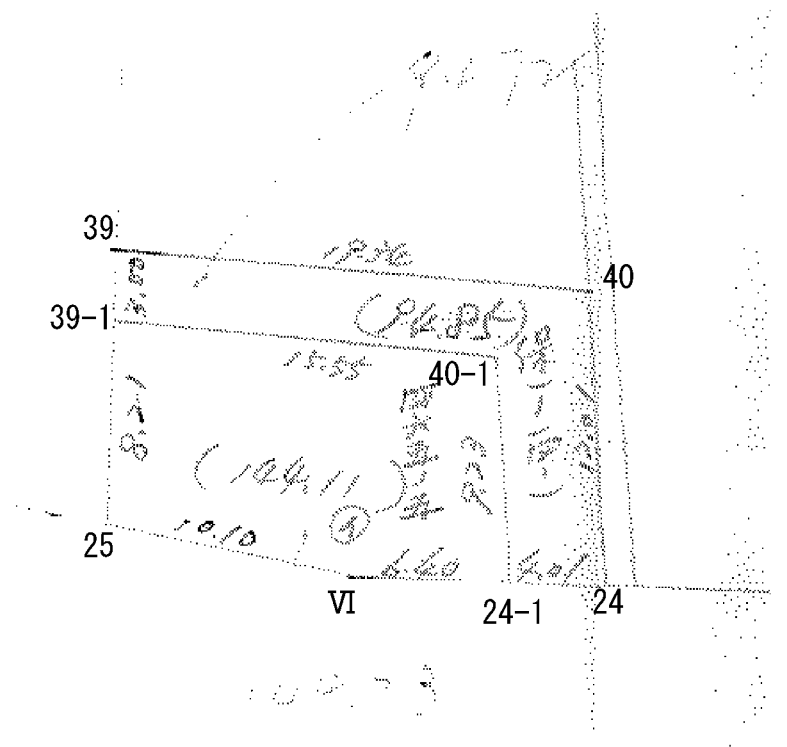
計年 月 日	計算者	檢査者
--------------	-----	-----

B. No. 14

各筆面積計算書

地番	算式	隅切	地積	摘要
494-1			156.41	✓
548-2			116.91	✓
548-1			133.56	✓
543			497.48	✓
480-1			1125.96	✓
437-1			1210.68	✓
549			359.68	✓
481(1)			1266.63	✓
479-1			888.40	✓
478			910.58	✓
464-5			238.96	✓
小堤			68.49	✓
水路			170.98	✓
477-2			282.23	✓
461-1 (12)			228.73	✓
461-3				
477-1			724.34	✓
476			1233.34	✓
			7767.44	
462(12)			955.55	✓
1		38.38		✓
2		4.48		✓
3		2.51		✓
4		3.41		✓
5		38.21		✓
		86.99	10568.91	10655.90
			合	10656.16

差 0.26



面積計算書

工区

1

ブロック

14

計算者

精算者

備考

保 1-14-1

465-5

点	①	②	③	④	⑤	⑥	③ × ⑤		② × ⑥	
	X	X - (定数)	X _{n-1} - X _{n+1}	Y	Y - (定数)	Y _{n-1} - Y _{n+1}	+	-	+	-
39	-152,592.937	-152,580 12.937	-9.615	-35,357.156	-35,330 27.156	-16.833	261,104,940		217,768,521	
40	-152,586.050	6.050	+3.573	-35,339.075	9.075	-23.982		32,424,976	145,091,100	
24	-152,596.510	16.510	+12.119	-35,333.174	3.174	-2.245		38,465,706	57,064,950	
24-1	-152,598.169	18.169	-6.384	-35,326.820	6.820	+8.193	43,602,720			148,858,617
40-1	-152,590.126	10.126	-2.504	-35,341.367	11.367	+19.078	28,462,968			193,183,828
39-1	-152,595.665	15.665	+2.811	-35,355.908	25.908	+15.789		72,827,288		247,334,685
							333,170,628	143,718,069	399,924,571	589,377,130
							189,452,559	1/2 = 94,726,279.5		189,452,559
39-1	-152,595.665	-152,590 5.665	-12.008	-35,355.908	-35,330 25.908	-11.123	337,011,264		63,011,795	
40-1	-152,590.126	0.126	+2.504	-35,341.367	11.367	-19.078		28,462,968	2,422,828	
24-1	-152,598.169	8.169	+10.686	-35,326.820	6.820	+1.290		72,985,380		10,538,010
27	-152,600.812	10.812	+4.965	-35,342.657	12.657	+15.660		62,842,005		169,315,920
25	-152,603.134	13.134	-5.147	-35,352.490	22.490	+13.251	115,756,020			174,032,634
							452,767,294	164,290,353	65,415,623	253,392,564
							288,476,941	1/2 = 144,238,470.5		288,476,941