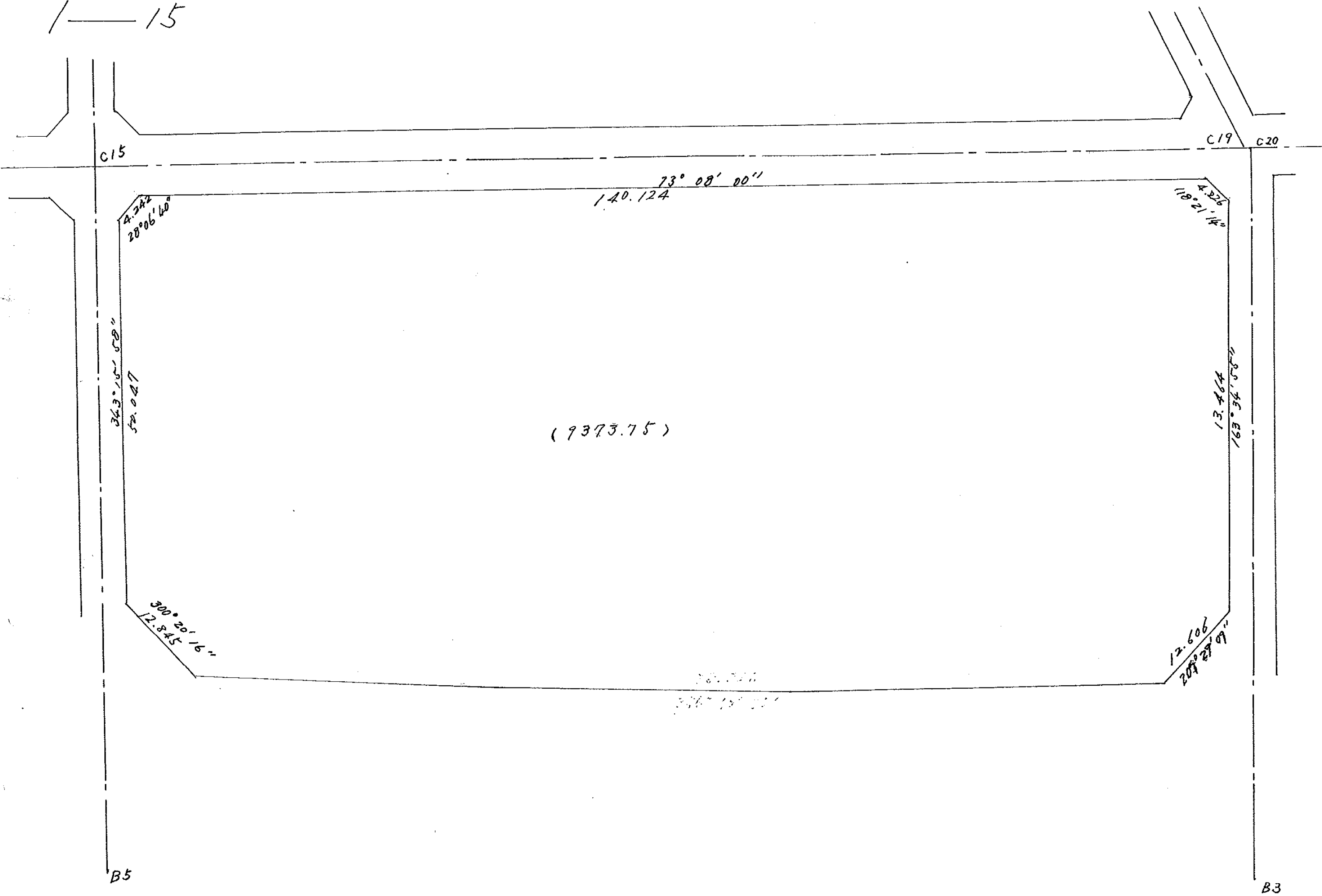
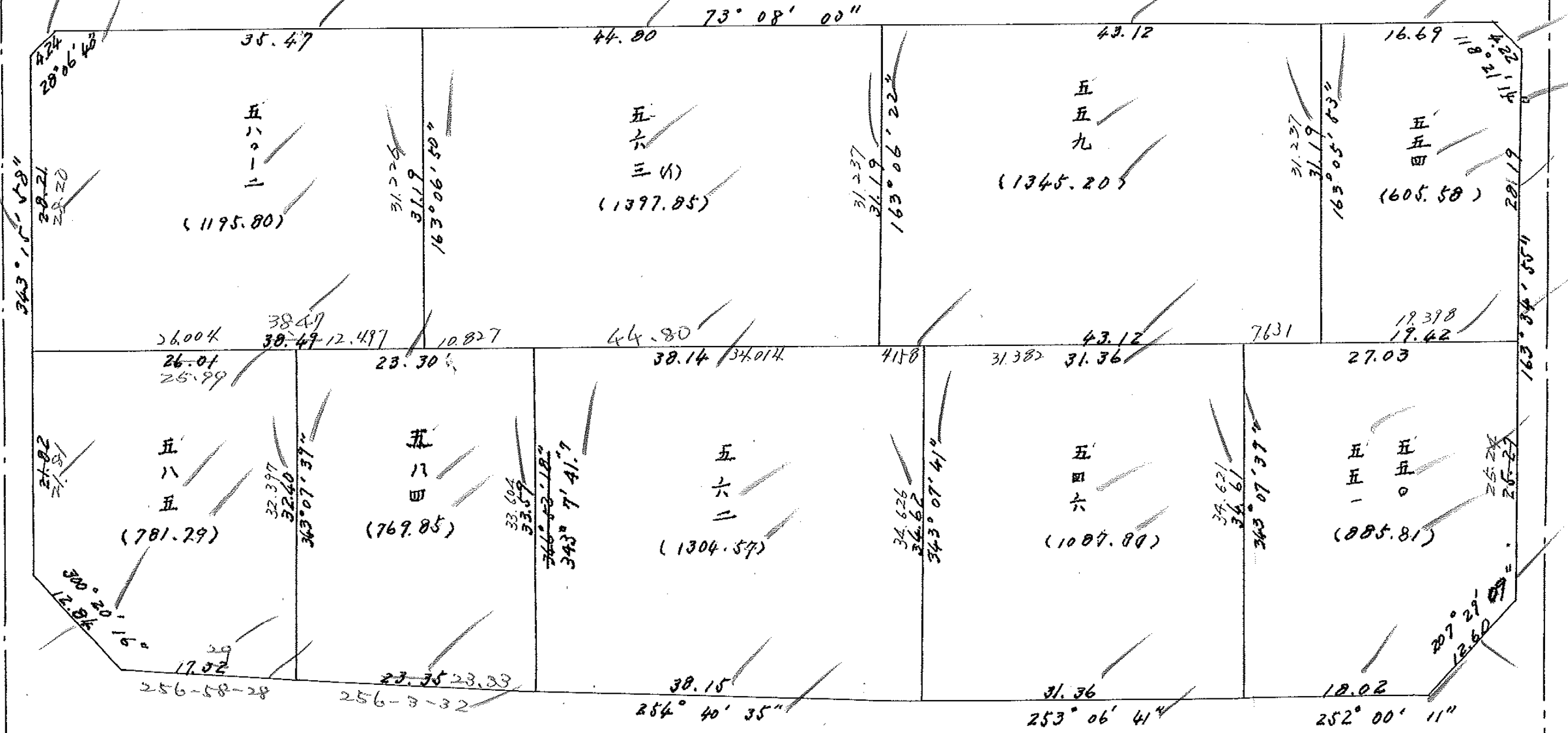


1-15



C18

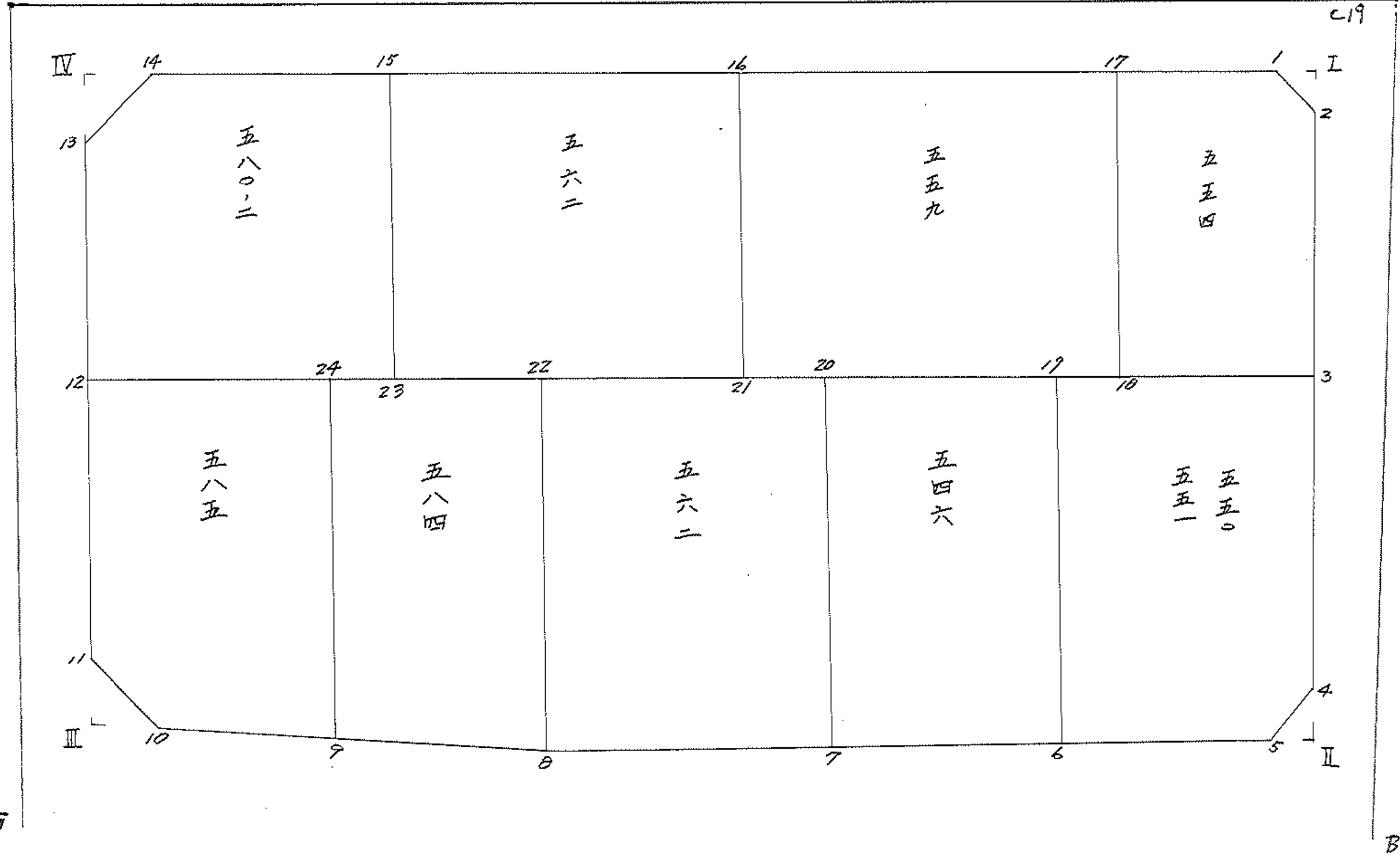
C19 C20



15ブロック

C-15

C20



面積計算書

工
区

ブロック

15

計算者



精算者



備考

点	① X	② X-(定数) X _{n-1} -X _{n+1}	③ X _{n-1}-X_{n+1}}}	④ Y	⑤ Y-(定数) Y _{n-1}-Y_{n+1}}}	⑥ Y _{n-1}-Y_{n+1}}}	③ × ⑤ +	⑤ -	② × ⑥ +	③ × ⑤ -	
I	-152.577476	(-152.570) - 7.476	+20.143	-35.475436	(-35.450) -25.436	-158.234			512.357348	-1182.957384	
II	640007	-70.007	+101.492	457011	- 7.011	+121.870			711.560412	8531.753070	
III	678968	-108.968	-20.143	597306	-147.306	+158.234	2967.184758			17242.442512	
IV	619864	-49.864	-101.492	615245	-165.245	-121.870	16771.045340			6076.925680	
							19138.230298		1223917760	7259.883084	25774.195602
							18514.312538				18514.312538
							X ¹ / ₂ = 9257.156267				
							K _中 = +202.564				
							9459.72026P				

面積計算書

工
区

1

ブ
ロ
ック

2

計
算
者



精
算
者



備
考

点	①	②	③	④	⑤	⑥	③ × ⑤	② × ④
	X	X-(定数)	$X_{n-1} - X_{n+1}$	Y	Y-(定数)	$Y_{n-1} - Y_{n+1}$	+	-
五 五 九 21	-152.595702	(-152.580) -15.702	-42.360	-35.535550	(-35.480) -55.550	-32.204	2353.090000	525.667208
17	583190	-3.190	+17.331	494281	-14.281	-50.337		247.504011
18	613033	-33.033	+42.360	485213	-5.213	+32.204		220.822680
21	625550	-45.550	-17.331	526485	-46.485	+50.337	805.631535	2292.850350
							3158.729535	468.326691
							2690.402844	666.242238
							$\times \frac{1}{2} = 1345.201422$	3356.645082
	0			0				2690.402844
五 五 四 17	-152.583190	(-152.570) -13.190	-34.686	-35474281	(-35.460) -34.281	-6.706	1189.070766	91.090140
1	578347	-8.347	-2.836	478307	-18.307	-19.693	51.818652	164.377471
2	580354	-10.354	+29.047	474588	-14.588	-11.687	423.737636	121.007198
3	607394	-37.394	+32.679	466620	-6.620	+10.625	216.334980	897.311250
18	613033	-43.033	-24.204	485213	-25.213	+27.661	610.255452	1190.835813
							1851.244870	640.072616
							376.474809	1587.647063
							1211.172254	1211.172254
							$\times \frac{1}{2} = 605.586127$	

分筆あり

面積計算書

工
区

ブ
ロ
ック

計
算
者



精
算
者



備
考

点	① X	② X-(定数) X _{n-1} -X _{n+1}	③ X _{n-1} -X _{n+1}	④ Y	⑤ Y-(定数) Y _{n-1} -Y _{n+1}	⑥ Y _{n-1} -Y _{n+1}	③ × ⑤ +	③ × ⑤ -	② × ⑥ +	② × ⑥ -
五 ハ ロ 二 14	-152.48993	(-152.600) -18.993	-14.033	-35.612374	(-35.560) -52.374	-35.944	734.964342		682.684392	
15	608702	-8.702	+19.562	578429	-18.429	-43.007		360.508098	374.246914	
23	638555	-38.555	+41.019	569367	-9.367	+27.754		384.224993		1070.055470
12	649721	-49.721	-15.820	606183	-46.183	+45.006	730.615060			2237.743326
13	672735	-22.735	-30.728	614373	-54.573	+6.191	1670.778544			140.752785
							3136.352946	744.733071	1056.931306	3448.551181
							2391.619875			2391.619875
							× 1/2 = 1195.8099375			
 五 三 一	15	(-152.590) -18.702	-42.853	-35.578429	(-35.520) -58.429	-33.817	2503.857937		632.445534	
	16	595702	+16.848	535550	-15.550	-51.944	261.886400	296.184688		
	21	625550	+42.853	526485	-6.485	+33.817	277.901705		1202.194350	
	23	638555	-16.848	569367	-49.367	+51.944	831.735216		2522.140920	
							3335.593153	539.888105	928.630222	3724.335270
							2795.705048			2795.705048
							× 1/2 = 1397.852524			

面積計算書

工
区

ブロック

15

計算者



結算者



備考

五
八
五

五
八
四

班	① X	② X-(定数) (-152.640)	③ $X_{n-1}-X_{n+1}$	④ Y	⑤ Y-(定数) (-35.570)	⑥ $Y_{n-1}-Y_{n+1}$	⑦ +	⑧ -	⑨ +	⑩ -
12	-152.649721	-9.721	-28.417	-35.606183	-36.183	-18.536	1022.212311		180.188456	
24	642178	-2.178	+23.463	581311	-11.311	-34.276		265.389993	74.653128	
9	673184	-33.184	+34.905	571907	-1.907	+7.450		66.563835		247.220800
10	677083	-37.083	-2.589	588761	-18.761	+27.940	48.572229			1036.099020
11	670595	-30.595	-27.362	599847	-29.847	+17.422	816.673614			533.026090
							1893.458154	331.953828	254.841584	1816.345910
							1561.504326			1561.504326
							$\frac{1}{2} = 780.752163$			
							欠円 + 0.545			
							781.297163			
24	-152.642178	(-152.630) -12.178	-37.770	-35.581311	(-35.540) -41.311	-12.898	1560.316470		157.071844	
22	635414	-5.414	+25.384	559009	-19.009	-32.052		482.524456	173.529528	
8	667562	-37.562	+37.770	549259	-9.259	+12.898		349.712430		484.474676
9	673184	-43.184	-25.384	571907	-31.907	+32.052	809.921288			1384.133568
							2370.243758	832.236886	330.601372	1868.689244
							1538.006872			1538.006872
							$\frac{1}{2} = 769.003436$			
							欠円 + 0.856			
							769.857436			

面積計算書

工区

ブロック

計算者



精算者



備考

五
六
二

五
六
三

点	① X	② X-(定数) (-152.620)	③ $X_{n-1}-X_{n+1}$	④ Y	⑤ Y-(定数) (-35.510)	⑥ $Y_{n-1}-Y_{n+1}$	③ × ⑤ +	⑤ -	② × ⑥ +	⑤ -
22	-152.635414	-15.414	-43.217	-35.559009	-49.009	-26.749	2118.021953		412.309086	
20	624345	-4.345	+22.065	522510	-12.510	-46.548		276.033150	202.251060	
7	657479	-37.479	+43.217	512461	-2.461	+26.749		106.357037		1002.525771
8	667562	-47.562	-22.065	549259	-39.259	+46.548	866.249835			2213.915976
							2984.271788	382.390187	614.560146	3216.441747
							2601.881601			2601.881601
							$\times \frac{1}{2} = 1300.9408005$			
							+ 欠付 3.639			
							1304.5798005			
20	-152.624345	-14.345	-42.239	-35.522510	-42.510	-19.969	1795.577880		286.455305	
19	615240	-5.240	+24.021	492492	-12.492	-40.065		300.070332	209.940600	
6	648366	-38.366	+42.239	482445	-2.445	+19.969		103.274355		766.130654
7	657479	-47.479	-24.021	512461	-32.461	+40.065	779.745681			1902.246135
							2575.325571	403.344687	496.395905	2668.376789
							2171.980884			2171.980884
							$\times \frac{1}{2} = 1085.990442$			
							+ 欠付 1.818			
							1087.808442			

面積計算書

工
区

ブ
ロ
ック

計
算
者



積
算
者



備
考

五
五
〇
五
五
一

点	①	②	③	④	⑤	⑥	③ ×	⑤	② ×	④
	X	X-(定数) (-152.600)	$X_{n-1}-X_{n+1}$	Y	Y-(定数) (-35.450)	$Y_{n-1}-Y_{n+1}$	+	-	+	-
19	-152.615240	-15.240	-40.972	-35.492492	-42.492	-15.825	1740.982224		241.173000	
3	607394	-7.394	+16.374	466620	-16.620	-33.008		272.135880	244.061152	
4	631614	-31.614	+35.403	459484	-9.484	-1.318		335.762052	41.667252	
5	642797	-42.797	+16.752	465302	-15.302	+22.961		256.339104		982.661917
6	648366	-48.366	-27.557	482445	-32.445	+27.190	894.086865			1315.071540
							2635.069089	864.237036	526.901404	2297.733457
							1770.832053			1770.832053
							$\bar{X} = 885.4160265$			
							欠附 = + 0.403 -			
							885.81 ⁹ 0265			

面積計算書

工
区

ブ
ロ
ック

計
算
者

吉
野

精
算
者

田
村

備
考

点	①	②	③	④	⑤	⑥	③ ×	⑤	② ×	④
	X	X-(定数)	$X_{n-1}-X_{n+1}$	Y	Y-(定数)	$Y_{n-1}-Y_{n+1}$	+	-	+	-
TV	-152.619864	(-152.610) - 9.864	-3.742	-35.615245	(-35.610) - 5.245	-1.999	19.626790		19.718136	
14	618993	- 8.993	+2.871	612374	- 2.374	-0.872		6.815754	7.841896	
13	622735	-12.735	+0.871	614373	- 4.373	+2.871		3.808883		36.562185
							19.626790	10.624637	27.560032	36.562185
							9.002153			9.002153
							$\times \frac{1}{2}$	4.5010765		
I	-152.577467	(-152.570) - 7.467	+2.007	-35.475436	(-35.470) - 5.436	-3.719		10.910052	27.769773	
Z	580354	-10.354	+0.880	474588	- 4.588	+2.871		4.037440		29.726334
1	578347	- 8.347	-2.887	478307	- 8.307	+0.848	23.982309			7.078256
							23.982309	14.947492	27.769773	36.804590
							9.034817			9.034817
							$\times \frac{1}{2}$	4.5174085		

面積計算書

工
区

ブ
ロ
ック

計
算
者

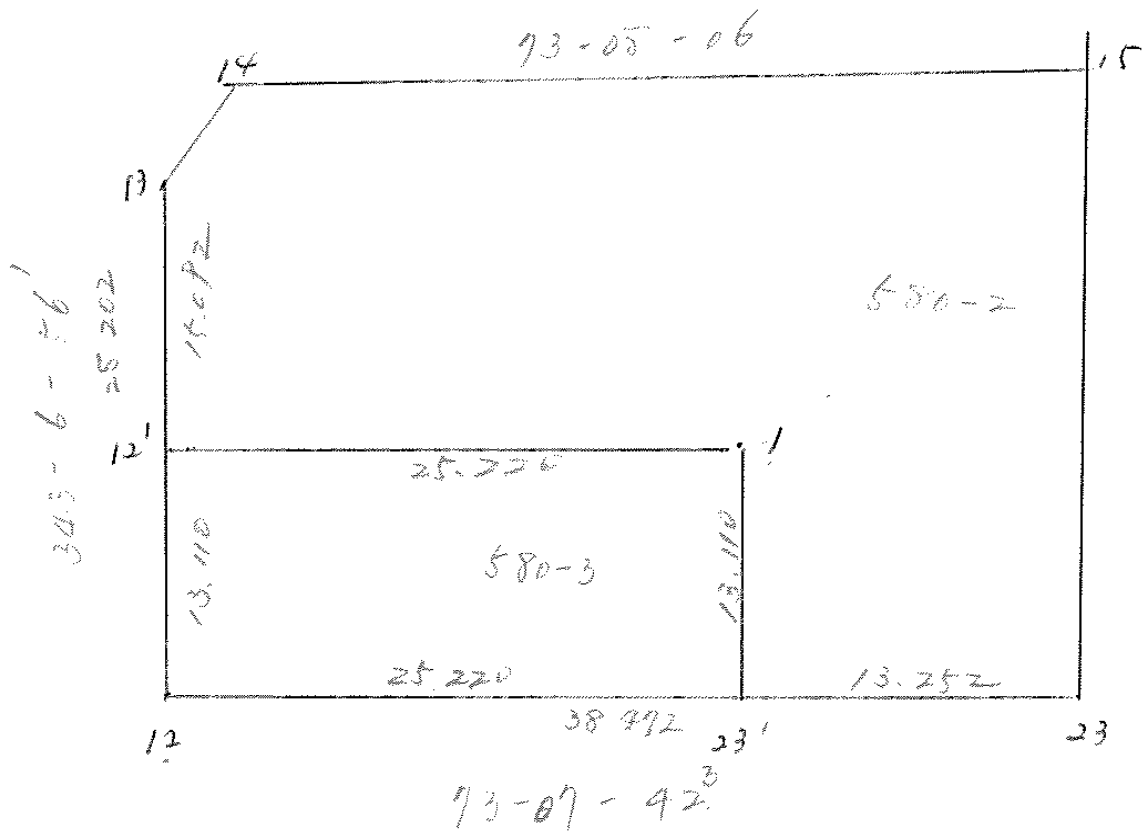


精
算
者



備
考

点	①	②	③	④	⑤	⑥	③ × ⑤	② × ③		
	X	X-(定数)	$X_{n-1}-X_{n+1}$	Y	Y-(定数)	$Y_{n-1}-Y_{n+1}$	+	-		
II	-152.640007	(-152.630) - 10.007	+ 11.183	- 35.457011	(-35.450) - 7.011	+ 5.818		78.404013	58.220726	
5	642797	- 12.797	- 8.393	465302	- 15.302	+ 2.473	- 128.429696		31.646981	
4	631614	- 1.614	- 2.790	459484	- 9.484	- 8.291	- 26.460360		13.381674	
							154.890046	78.404013	13.381674	89.867707
							76.486033			76.486033
							$\frac{1}{2} = 38.2430165$			
							24 + 0.177			
III	-152.678968	(-152.670) - 8.968	- 6.488	- 35.597306	(-35.580) - 17.306	+ 11.086	- 38.4200165		99.419248	
11	670595	- 0.595	- 1.885	599847	- 19.847	- 8.545	- 37.411595		5.024275	
10	677083	- 7.083	+ 8.373	588761	- 8.761	- 2.541	- 73.355853		17.997703	
							149.672923	73.355853	23.002178	99.419248
							76.337070			76.337070
							$\frac{1}{2} = 38.168535$			
							24 + 0.177			
							38.345535			



座標法面積計算 (580-3)

點番	X	ΔX	Y	ΔY	(+) F_1 $\Delta X \cdot \Delta Y$	(-) F_2 $\Delta X \cdot \Delta Y$
	-152		-500			
12'	637.176		609.991			
		* -7.320		-195.848	1433.60736	
1	629.856		585.857			
		+12.545		167.906		2106.78077
23'	642.401		582.049			
		+7.320		+188.232		1377.858 24
12	649.721		606.183			
		* 12.545		+216.174	2711.90283	
12'	637.176		609.991			
$\Sigma =$					4145.51019	2484.23901
$F = (F_1) - (F_2) =$						661.27118
$F / 2 =$						330.63559
計算者					× 0.3025 =	
照査者						

面積計算書

工
区

ブ
ロ
ック

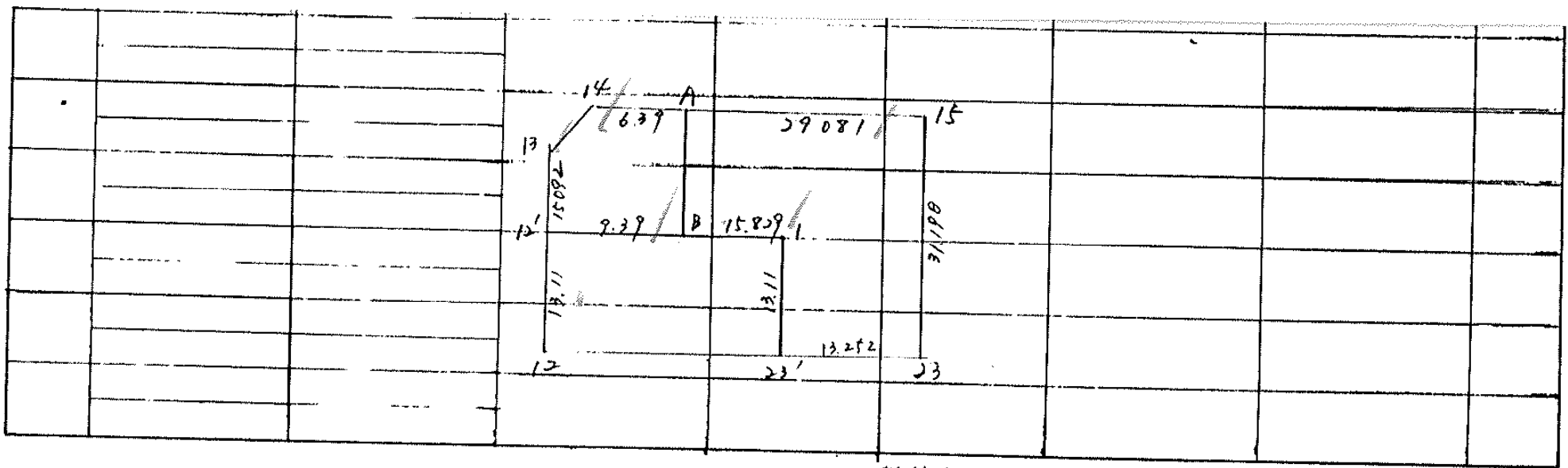
計
算
者

測
算
者

備
考

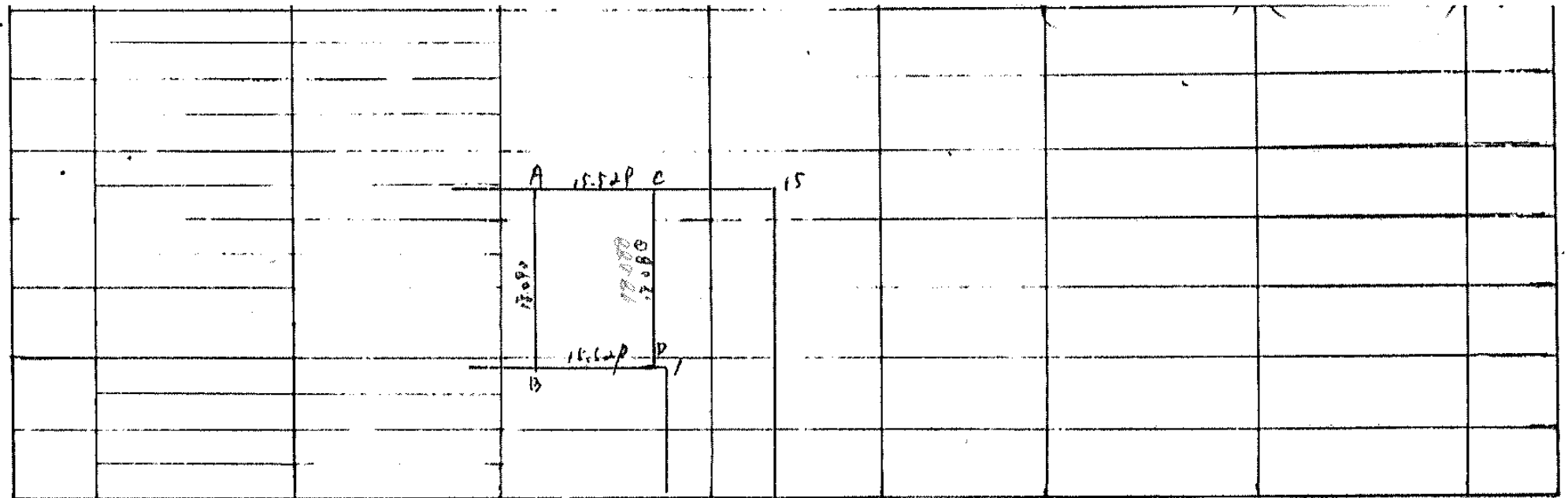
580-3

点	①	②	③	④	⑤	⑥	③ × ⑤		② × ⑥	
	X	X - (定数)	X _{n-1} - X _{n+1}	Y	Y - (定数)	Y _{n-1} - Y _{n+1}	+	-	+	-
12'	⁻¹⁵² 637.176	- 37.196	- 17.865	⁻³⁵ 607.991	- 107.991	- 20.326	2184.971215			755.639376
1	- 627.856	- 27.856	+ 5.225	- 585.857	85.857	- 27.942		448.602825	834.276352	
23'	- 642.401	- 42.401	+ 17.865	- 582.047	82.047	+ 20.326		1627.903385		861.842728
12	- 647.721	- 47.721	- 5.225	- 606.183	106.183	+ 27.942	554.806175			1387.30018
							2737.999390	2078.506210	1587.871728	2251.146908
							661.271180		661.271180	
								661.271180 × 1/2 =		330.635590



計算者

吳検者



21/

23

計算者

実検者

座標法面積計算 (580-2)

測点	X	Δx	Y	Δy	(+) F ₁	(-) F ₂
					$\Delta x \cdot \Delta y$	$\Delta x \cdot \Delta y$
			(- 560)			
A	-617.139		-606.259			
		+8.437		-64.688	545.772656	
15	-608.702		-578.429			
		-29.853		-27.796		729.905172
23	-638.555		-569.367			
		-3.206		-31.416		120.7251
23'	-642.401		-582.049			
		+12.545		-47.906	100.980770	
1	-629.856		-585.857			
		-4.594		-66.862		307.164028
B	-634.450		-601.005			
		+17.311		-27.264	1510.627100	
A	-617.139		-606.259			
	-	-	-	-		
	-	-	-	-		
	-	-	-	-		
	-	-	-	-		
	-	-	-	-		
	-	-	-	-		
				$\bar{Z} =$	2657.380530	1257.895136
				$F = (F_1) \sim (F_2) =$		1399.485394
計算者				$F / 2 =$		699.742697
点検者				$\times 0.3025 =$		699.80

