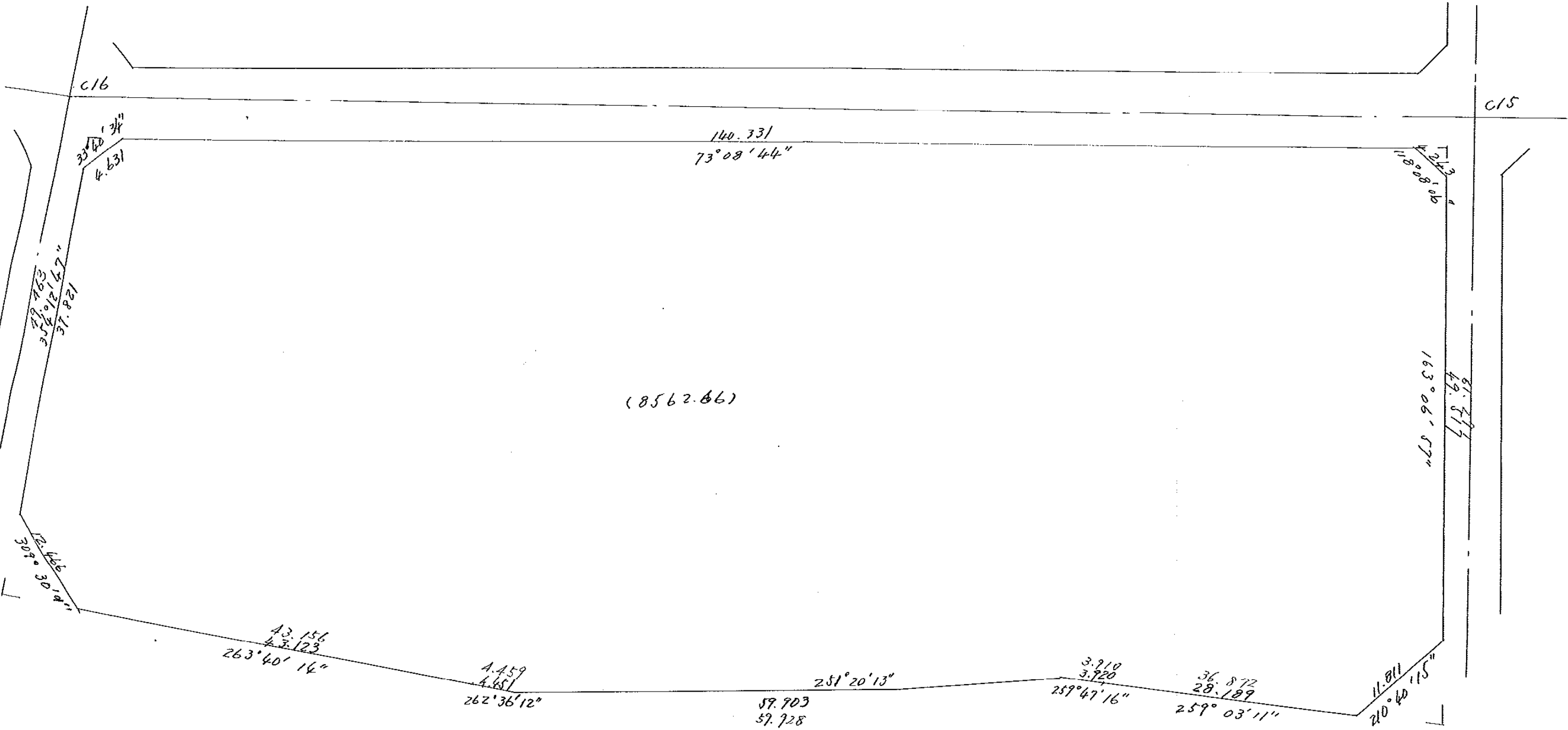


1-16

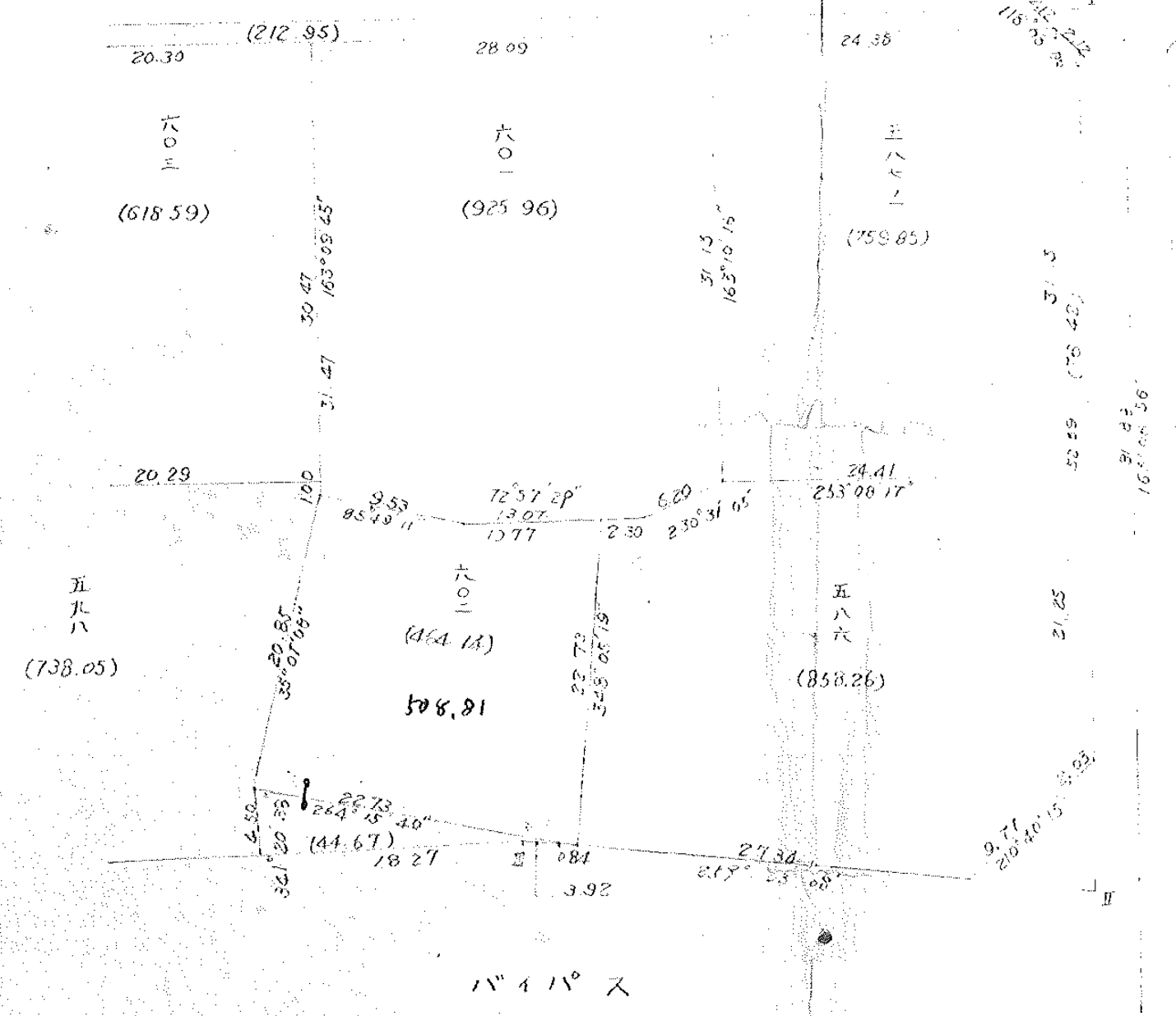


16
1-18



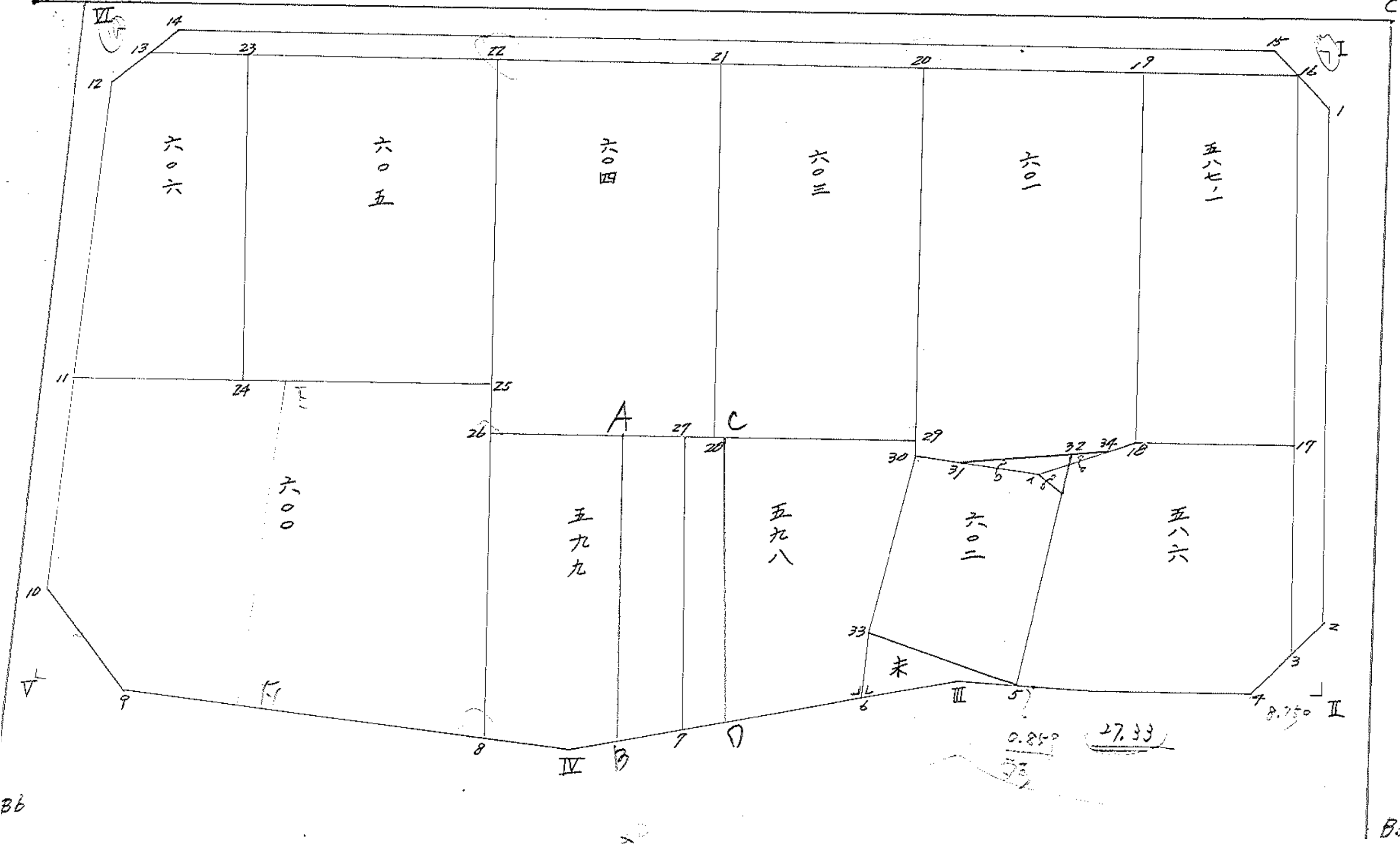


S = 1 : 500



C-16

C-15



六〇六

六〇五

六〇四

六〇三

六〇一

五八七

六〇〇

五九九

五九八

六〇二

五八六

未

0.850

27.33

8.750

B6

B5

面積計算書

工区

1

ブロック

16

計算者



精算者



備考

点	① X	② X-(定数)	③ $X_{n-1}-X_{n+1}$	④ Y	⑤ Y-(定数)	⑥ $Y_{n-1}-Y_{n+1}$	③ ×	⑤	② ×	⑥
							+	-	+	-
I	-162 621.605	(-162620) - 1.605	+ 16.199	-35 620.987	(-35600) - 20.987	- 157.839			339.968413	253.331595
II	680.231	- 60.231	+ 66.460	603.193	- 3.193	+ 22.306		212.206780		1243.512686
III	688.065	- 68.065	+ 27.003	643.293	- 43.293	+ 71.853		1167.040879		6572.299445
IV	707.234	- 87.234	+ 25.285	700.046	- 100.046	+ 112.741		2529.663110		34.048394
V	713.350	- 93.350	- 43.202	756.034	- 166.034	+ 60.986	980860 6740.908860			9844.99084
VI	664.032	- 44.032	- 91.745	761.032	- 161.032	- 135.047	14773.880840		6946.389504	
							21514.861708	4250.879182	6199.721099	23463.703625
							17263.982526			17263.982526
							$X_2 = 8631.991263$			
							5849.9112			
							21514.861708			
							欠円 = 16.0767			
							計 = 8648.06			

面積計算書

I
区

ブ
ロ
ック

計
算
者

精
算
者

備
考

点	①	②	③	④	⑤	⑥	③ × ⑤	② × ⑥
	X	X-(定数)	$X_{n-1} - X_{n+1}$	Y	Y-(定数)	$Y_{n-1} - Y_{n+1}$	+	-
	凍野606 (-152660)				(-35740)			
23	-152.662.377	2.377	+ 21.890	-35.750.397	- 10.397	- 16.536		227.590.330 39.306.072
24	87.016	- 27.016	+ 29.284	742.934	- 2.934	+ 7.835		85.919.256 211.670.360
11	691.661	- 31.661	- 20.000	758.232	- 18.232	+ 17.795	864.64.0000	563.407.495
12	667.016	- 7.016	- 26.535	760.729	- 20.729	+ 1.238	550.044.015	8.625.808
13	665.126	- 5.126	- 4.639	759.470	- 19.470	- 10.332	90.321.330	52.961.832
							1005.005.345 313.509.586	9 52.267.904 783.763.663
							691.495.759	691.495.759
						$\frac{1}{2}$	345.747.875	
	凍野605 (-152650)				(-35710)			
22	-152.653.449	3.449	+ 15.692	-35.720.924	- 10.924	- 36.930		171.419.408 127.334.640
25	678.069	- 28.069	+ 33.568	713.467	- 3.467	+ 22.010		116.380.256 617.798.690
24	687.016	- 37.016	- 15.692	742.934	- 32.934	+ 36.930	516.800.328	1367.000.880
23	662.377	- 12.377	- 33.568	750.397	- 40.397	- 22.010	1356.046.496	272.417.990
							1872.846.824 287.799.664	3 399.752.410 1984.799.570
							1585.047.160	1585.047.160
						$\frac{1}{2}$	792.523.580	

面積計算書

工
区

1

ブ
ロック

16

計
算
者



精
算
者



備
考

点	①	②	③	④	⑤	⑥	③ × ⑤		② × ⑥	
	X	X-(定数)	X _{n-1} -X _{n+1}	Y	Y-(定数)	Y _{n-1} -Y _{n+1}	+	-	+	-
波野 604	-152	(-152640)		-35	(-35680)					
22	652.448	-13.448	-38.024	720.924	-40.924	-20.447	1546.094176			274.771256
21	644.579	-4.579	+20.294	691.647	-11.647	-38.104		236.364218		174.478216
28	673.742	-33.742	+38.024	682.820	-2.820	+20.447		107.227680		689.922674
26	682.603	-42.603	-20.294	712.094	-22.094	+38.104	644.315636			1623.344712
							2207.409812	343.591898	447.449472	2313.267386
							1863.817914			1863.817914
							$\frac{1}{2} = 931.908957$			
波野 603	-152	(-152630)		-35	(-35660)					
21	644.579	-14.579	-35.049	691.647	-21.647	-10.602	1109.195703			154.566558
20	638.693	-8.693	+23.282	672.218	-12.218	-28.256		284.459476		245.629408
29	667.861	-37.861	+35.049	663.391	-3.391	+10.602		118.851159		401.402322
28	673.742	-43.742	-23.282	682.820	-22.820	+28.256	531.295240			1235.973722
							1640.490943	403.310635	400.195966	1637.376274
							1237.180308			1237.180308
							$\frac{1}{2} = 618.590154$			

面積計算書

工
区

1

ブ
ロ
ック

16

計
算
者



精
算
者



備
考

点	①	②	③	④	⑤	⑥	③ × ⑤		② × ⑥
	X	X-(定数)	X _{n-1} -X _{n+1}	Y	Y-(定数)	Y _{n-1} -Y _{n+1}	+	-	+ -
27	598								
	-152	(-152660)		-35	(-35660)				
27	676.699	-16.699	-34.632	672.588	-32.588	-22.617	1128.587616		377.681283
29	667.861	-7.861	-7.880	663.391	-3.391	-27.487	26.74080		231.787307
30	668.819	-8.819	+21.782	663.101	-3.101	-1.338		67.545982	11.799822
33	689.643	-29.643	+25.095	662.053	-2.053	-2.490		51.520035	73.811070
6	693.914	-33.914	+12.850	660.611	-0.611	+23.955		7.851350	812.409870
7	702.493	-42.493	-17.215	686.008	-26.008	+31.977	447.727720		1358.798661
							1603.036416	126.917367	695.089482
									2171.208531
							1476.119049		1476.119049
							Σ = 728.0595245		合筆あり
26	599								
	-152	(-152670)		-35	(-35680)				
26	682.603	-12.603	-31.108	712.094	-32.094	-11.872	998.380152		149.622816
27	676.699	-6.699	+19.890	672.588	-12.588	-26.086		260.375320	174.750114
7	702.493	-32.493	+30.535	686.008	-6.008	+7.459		183.454280	242.332794
IV	707.234	-27.234	+5.314	700.046	-20.046	+18.452		106.524444	687.041768
8	707.807	-27.807	-24.631	704.460	-24.460	+12.048	602.474260		455.498736
							1600.854412	540.354044	324.372930
									1084.873298
							1060.500368		1060.500368
							Σ = 530.250184		合筆あり

面積計算書

工区

1

ブロック

16

計算者



精算者



備考

点	① X	② X-(定数)	③ $X_{n-1} - X_{n+1}$	④ Y	⑤ Y-(定数)	⑥ $Y_{n-1} - Y_{n+1}$	③ ×	⑤	② ×	④
							+	-	+	-
30	668.819	8.819	-20.966	663.101	22.101	-0.898	693.99566		7.99462	
31	668.677	8.677	-5.666	661.155	21.155	-1.956	176.524230		173.158212	
32	663.153	2.153	+18.693	643.145	13.145	-2.720		245.719485	68.483160	
5	687.370	27.370	+26.490	639.435	7.435	+18.908		249.933150		517.511960
33	689.643	29.643	-20.551	662.053	22.053	+23.666	594.615203			701.531238
							1465.104999	475.652635	249.560834	1219.043198
							969.482364			969.482364
							$\frac{1}{2} = 484.741182$			
33	689.643	9.643	-6.544	662.053	22.053	-2.176	209.754832		204.20168	
5	687.370	7.370	-1.578	639.435	7.435	-18.760	14.888430		138.261200	
III	688.065	8.065	+6.544	643.293	13.293	+2.176		86.989392		170.784440
6	693.914	13.914	+1.578	660.611	20.611	+18.760		48.304158		261.026640
							224.6436 ²⁶²	135.293550	242.461368	431.811080
							89.349712			89.349712
							$\frac{1}{2} = 44.674856$			

合筆あり

面積計算書

工
区

ブ
ロ
ック

計
算
者

精
算
者

備
考

点	①	②	③	④	⑤	⑥	③ × ⑤		② × ⑥	
	X	X-(定数)	$X_{n-1} - X_{n+1}$	Y	Y-(定数)	$Y_{n-1} - Y_{n+1}$	+	-	+	-
	野 浜 600									
11	-152.691.661	- 21.661	- 26.575	-35.758.232	- 58.232	- 43.047	1547.515.000			941.148.789
25	678.069	- 8.069	+ 16.146	713.467	- 13.467	- 53.772		217.438.182	42.886.268	
8	707.807	- 37.807	+ 34.472	704.460	- 4.460	+ 33.853		153.834.320		1279.880.371
9	712.561	- 42.561	- 3.163	747.320	- 47.320	+ 52.456	149.673.160			2232.579.816
10	704.644	- 34.644	- 20.900	756.916	- 56.916	+ 10.912	1189.544.400			378.035.328
							2886.732.960	371.272.502	1375.035.057	3890.495.515
							2515.460.458			2515.460.458
							$\frac{1}{2}$ 1257.730.229			
										分筆後の座標なし
	野 浜 602									
30	-152.668.819	- 8.819	- 21.579	-35.663.101	- 33.101	- 8.457	712.300.419			74.582.283
31	668.124	- 8.124	- 3.720	653.596	- 23.596	- 17.374	87.777.120			157.394.376
32	665.099	- 5.099	+ 19.246	643.727	- 13.727	- 14.161		264.189.842	72.206.939	
5	687.370	- 27.370	+ 24.544	639.435	- 9.435	+ 18.326		231.578.640		501.582.620
33	689.643	- 29.643	- 18.551	662.053	- 32.053	+ 23.666	594.615.203			701.531.238
							1394.692.742	495.762.482	304.183.598	1203.113.858
							898.930.260			898.930.260
							$\frac{1}{2}$ 449.465.130			

面積計算書

工区

1

ブロック

16

計算者



精算者



備考

点	①	②	③	④	⑤	⑥	③	×	⑤	③	×	⑤
	X	X-(定数)	X _{n-1} -X _{n+1}	Y	Y-(定数)	Y _{n-1} -Y _{n+1}	+	-	+	-	+	-
20	601	(-152680)	-38.273	-35.672-218	(-35650)	-17.773	1115.809514		154.400689			
19	630.546	-0.546	+31.658	645.328	-15.328	-25.905		331.973824	19.604130			
18	660.351	-20.351	+30.791	636.313	-6.313	-7.648		191.267403	222.124480			
24	661.477	-21.477	+8.326	637.680	-7.680	+24.842		63.943680				781.751634
31	668.677	-38.677	+7.342	661.155	31.155	+25.421		228.740010				983.208017
30	668.819	-38.819	-29.984	663.101	33.101	+11.063	972.500384		429.454597			
							2608.309898	879.924917	406.229267	2194.614246		1788.384981
							1788.384981					1788.384981
							<u>Σ = 894.1924905</u>					
19	587-1	(-152620)	-26.876	-35	(-35610)	-14.326	1302.765328		151.081996			
16	623.475	-2.475	+22.722	621.987	11.987	-22.384		272.368614	112.534400			
17	623.268	-33.268	+26.876	612.944	-2.944	+14.326		108.562944				476.597368
18	660.351	-40.351	-22.722	626.313	-26.313	+22.384	597.883986		1306.726784			
							1700.639314	380.931558	263.616396	1783.24152		
							1519.707716					1519.707716
							<u>Σ = 759.853878</u>					

面積計算書

I
区

ブ
ロ
ック

計
算
者

精
算
者

備
考

点	①	②	③	④	⑤	⑥	③ × ⑤	② × ⑥		
	X	X-(定数)	$X_{n-1} - X_{n+1}$	Y	Y-(定数)	$Y_{n-1} - Y_{n+1}$	+	-		
	60.1									
19	-152.630.546	(-152.630) - 0.546	+ 21.658	-35.645.328	(-35.630) - 15.328	- 35.705	331.973.824	19.604.130		
18	660.351	- 30.351	+ 33.747	606.313	- 6.313	- 4.230	213.044.811	128.384.780		
34	664.293	- 34.293	+ 7.773	641.099	- 11.099	+ 17.283	86.264.754	572.685.919		
31	668.124	- 38.124	+ 4.526	653.596	- 23.596	+ 22.003	106.795.496	838.842.372		
30	668.819	- 38.819	- 29.431	663.101	- 33.101	+ 18.622	974.195.531	722.887.418		
20	638.693	- 8.693	- 38.273	672.218	- 42.218	- 17.773	145.809.514	154.500.689		
							2570.005.045	728.078.885	302.489.549	2154.415.709
							1851.926.160		1851.926.160	
							<u>1/2 925.963.080</u>			

面積計算書

工
区

/

ブ
ロ
ック

16

計
算
者

稽
算
者

備
考

点	①	②	③	④	⑤	⑥	③ × ⑤	② × ⑥
	X	X-(定数)	$X_{n-1} - X_{n+1}$	Y	Y-(定数)	$Y_{n-1} - Y_{n+1}$	+	-
	浪野 586							
17	-152.657.269	(-152.650) - 3.268	+ 13.256	-35.612.904	(-35.600) - 12.944	- 27.542	585.664 171.520.944	96.543.256
J	673.607	- 23.607	+ 28.749	606.771	- 6.771	- 1.185	194.659.479	27.974.275
4	682.017	- 32.017	+ 13.763	611.759	- 11.759	+ 32.664	161.839.117	1045.903.280
5	687.370	- 37.370	- 16.918	639.435	- 39.435	+ 31.968	667.161.330	1194.644.160
32	665.099	- 15.099	- 23.099	643.727	- 43.727	+ 1.663	1009.087.979	25.109.637
34	664.293	- 14.293	- 4.788	641.098	- 41.098	- 7.414	195.133.304	105.768.302
18	660.351	- 10.351	- 11.025	636.313	- 36.313	- 28.154	400.350.825	291.422.054
							2271.733.438	528.019.560
							649.178	521.907.907
							1743.913.998	2265.557.085
							871.824.589	1743.649.170

面積計算書

工区

1

ブロック

16

計算者



精算者



備考

点	① X	② X-(定数)	③ $X_{n-1}-X_{n+1}$	④ Y	⑤ Y-(定数)	⑥ $Y_{n-1}-Y_{n+1}$	③ × ⑤ +	⑤ -	② × ⑥ +	④ × ⑥ -
水跡										
13	-152 665.126	(-152620) -45.126	+39.687	-35 759.470	(-35620) -129.470	+136.174			5521.145890	6144.98794
14	663.162	-43.162	-42.651	758.161	-138.161	-135.612	5892.704811		5852.281444	
15	622.475	2.475	-39.687	623.858	3.858	-136.174	751.112446		337.030650	
16	623.475	2.475	+42.651	621.987	-1.987	+135.612		84.747537	-694825	471.251700
							6045.817257	5619.893427	6190.315794	6616.237624
							425.923830		6144.98794	425.923830
							$\bar{Y}_2 = 212.961915$			
水跡										
1	-152 671.858	(-152620) -4.476	+48.383	-35 620.116	(-35600) -20.116	-16.253			973.272428	72.748428
2	671.858	-51.858	+49.131	605.734	5.734	-13.345			281.717154	692.054010
3	673.607	-53.607	-48.383	606.771	6.771	+16.253	327.601293			871.274571
16	623.475	3.475	-49.131	621.987	-2.987	+13.345	1080.243297			46.373875
							1407.844690	1254.989522	764.793438	917.648446
							152.855008			152.855008
							$\bar{Y}_2 = 76.427504$			

面積計算書

工区 1 ブロック 16 計算者 精算者 備考

点	①	②	③	④	⑤	⑥	③ × ⑤	② × ⑥
	X	X-(定数)	$X_{n-1} - X_{n+1}$	Y	Y-(定数)	$Y_{n-1} - Y_{n+1}$	+ -	+ -
角切り								
E	-152 621.605	(-152620) -1.605	+2.001	-35 620.987	(-35620) -0.987	-3742	1.974987	6.006910
1	624.476	-4.476	+0.870	620.116	-0.116	+2.871	0.100920	12.850596
15	622.475	-2.475	-2.871	623.858	-2.858	+0.871	11.076318	2.155725
							11.076318	2.075707
							9.000411	6.006910
								15.006321
								9.000411
							<u>Σ = 4.502055</u>	
角切り								
II	-152 680.231	(-152670) -10.231	+10.159	-35 603.193	(-35600) -3.193	+6.025	32.437687	61.641775
4	682.017	-12.017	-8.373	611.759	-11.759	+2.541	78.458107	30.535997
2	671.858	-1.858	-1.786	605.734	-5.734	-8.566	10.240924	15.915628
							108.699031	32.437687
							76.261344	15.915628
								92.176972
								76.261344
							<u>Σ = 38.130672</u>	

面積計算書

工
区

1

ブ
ロ
ック

16

計
算
者



精
算
者



備
考

点	① X	② X-(定数)	③ $X_{n-1}-X_{n+1}$	④ Y	⑤ Y-(定数)	⑥ $Y_{n-1}-Y_{n+1}$	③ ×	⑤	② ×	⑥
							+	-	+	-
前切1)										
V	-152 712.250	(-152700) -13.250	-7.917	-35 756.034	(-35740) -16.034	576 +7.586	126.941178 -718.774178			128.106600
10	704.644	-4.644	-0.789	756.916	-16.916	-8.714	12.246724		40.467816	
9	712.561	-12.561	+8.706	747.320	-7.320	-0.882		67.727920	11.078802	
							140.287902 921.987902 76.549782 988.257782 38.278771 <u>1/2 = 434.12991</u>	63.727920	57.546618	128.106600
										76.549982
前切4)										
VI	-152664.032 712.250	(-152660) -4.032	-3.854 -2.874	-35761.032 756.034	(-35750) -11.032	-2.568	42.547328		10.254176	
14	663.162	-3.162	+2.984	758.161	-8.161	-0.203		24.352424	0.943086	
12	667.016	-7.016	+0.870	760.729	-10.729	+2.871		9.204230		20.142936
							42.547328	33.686654	11.312262	20.142936
							8.920674			8.920674
							<u>1/2 = 44.15337</u>			

計 年 月 算 日	計 算 者	檢 查 者
-----------------------	-------------	-------------

B. No. 16 各筆面積計算書

地番	算式	隅切	地積	摘要
606			345.74 ✓	
605			792.52 ✓	
600	1257.73 + 欠地 5.34		1257.73 1263.07 ✓	
604			931.90 ✓	
599			530.25 ✓	
603			618.59 ✓	
598			738.05 ✓	
601			925.96 ✓	
602			660.14 447.46	108.81 ✓
587-1			759.85 ✓	
586	871.82 + 欠地 1.40		873.22 871.82	858.26
未			44.67	
水路	水六号線		212.96	
水路	水五号線		76.42	
角 E7I		4.50		
II		38.13		
V		38.27		
VI		4.41		
		85.31	8562.66	計 8647.97
				8648.06
				- 0.09

才一工区

BNO16

586
602 番変更計算書

S47. 5. 24

面積計算書

工区 / ブロック 16 計算者 [署名] 精算者 [署名] 備考

点	①	②	③	④	⑤	⑥	③ × ⑤		② × ⑥		
	X	X-(定数)	X _{n-1} -X _{n+1}	Y	Y-(定数)	Y _{n-1} -Y _{n+1}	+	-	+	-	
17	-152,663.268	-152,660	-13.256	-35,612.924	-35,600	12.944	+ 27,542			96,543256	
18	-152,660.351	10.351	+ 11.025	-35,636.313	36.313	+ 28.154		400,350825		291,422054	
34	-152,664.293	14.293	+ 4.616	-35,641.098	41.098	+ 6.984		129,708368		99,822312	
32'	-152,664.967	14,967	+ 22.917	-35,643.297	43.297	- 2.493		992,237349	37,312731		
4'	-152,687.210	37.210	+ 17.050	-35,628.605	38.605	- 31.538		668,215250	1173,528980		
4	-152,682.017	32.017	- 13.603	-35,611.749	11.749	- 31.834	159,987677		1019,29178		
3	-152,673.607	23.607	- 28.749	-35,606.771	6.771	+ 1.185	194,659479			27,974295	
							526,202820	2240,511792	2230,070889	515,761917	
							1714,308972	1714,308972			
カ-7"面積計算							$\frac{27.344}{2} = 13.672$				
							$\sin \frac{13.672}{1273.75} = 0.010733660451 = 0^\circ - 36' - 54''$			$\frac{1}{2} = 857.154486$	
							$I = (0^\circ - 36' - 54'') + (0^\circ - 36' - 54'') = 1^\circ - 13' - 48'' = 1.23000^\circ$			858.26	m^2
							$C.L = 1273.75 \times 0.0174533 \times 1.2300 = 27.344303276$				
							$\square = 1273.750 \times 27.344303276 \times \frac{1}{2} = 17414.903$				
							$\nabla = 1273.676759 \times 13.672 = 17413.708$				
							$\square - \nabla = 17414.903 - 17413.708 = 1.195 m^2$				

面積計算書

工
区

ブ
ロ
ック

16

計
算
者



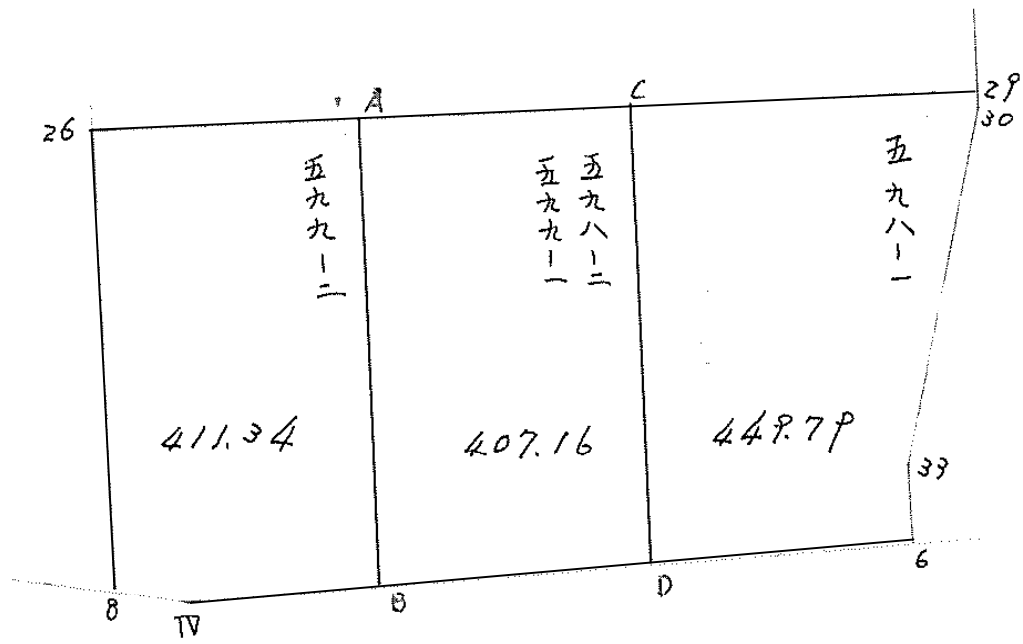
精
算
者

備
考

浜野602

合筆あり

点	①	②	③	④	⑤	⑥	③ × ⑤		② × ⑥	
	X	X-(定数)	X _{n-1} -X _{n+1}	Y	Y-(定数)	Y _{n-1} -Y _{n+1}	+	-	+	-
32'	-152,664.967	-152,660 4.967	- 22.111	-35,643.297	-35,630 13.297	+ 5.122	294,029,967			25,440,974
32	-152,665.099	5.099	+ 3.157	-35,643.727	13.727	+ 10.299		43,336,139		52,414,601
31	-152,669.124	8.124	+ 3.720	-35,653.496	23.496	+ 19.374		87,777,120		157,374,376
30	-152,668.219	8.219	+ 21.519	-35,663.101	33.101	+ 8.457		712,300,419		74,582,283
33	-152,689,643	29.643	+ 18.551	-35,662.053	32.053	- 23.666		494,615,203	701,531,238	
5	-152,687.370	27.370	- 2.433	-35,139.434	9.434	- 23.448	22,955,355		641,771,760	
5'	-152,687.210	27.210	- 22.403	-35,638.605	8.605	+ 3.862	192,777,815			105,085,020
							509,743,137	1438,028,881	1243,302,998	415,017,254
								928,285,744	928,285,744	
									1/2 = 460,142,872	



面積計算書

工区

1

ブロック

16

計算者

精算者

備考

5PP-2

点	①	②	③	④	⑤	⑥	③ × ⑤		② × ⑥	
	X	X - (定数)	X _n - X _{n-1}	Y	Y - (定数)	Y _n - Y _{n-1}	+	-	+	-
26	752 682.605	(152670) 12.603	+ 29.652	35 712.094	(-75680) 72.094	+ 7.077	951.811758		89.191431	
A	678.150	8.150	- 21.431	697.383	17.383	+ 22.375		767.528769	182.256250	
B	703.746	33.746	- 29.084	689.719	9.719	- 2.663		282.667396		89.865598
IV	707.234	37.234	- 4.061	700.046	20.046	- 14.741		81.406806		548.866394
8	707.807	37.807	+ 24.631	704.660	24.460	- 12.048	602.474260			455.498736
							1554.286018	731.602971	271.547681	1074.230728
							822.683047			822.683047
							× 1/2 = 411.7415235			

面積計算書

区 1
 フロツク 16
 計算者
 精算者
 備考 5PP-1
 5PP-2

点	①	②	③	④	⑤	⑥	③ × ⑤		② × ⑥	
	X	X - (定数)	X _{n-1} - X _n	Y	Y - (定数)	Y _{n-1} - Y _n	+	-	+	-
A	752 678.150	(-152670) 8.150	+ 30.060	697.923	(-35670) 27.323	+ 7.085	823.132980			57742750
C	673.686	3.686	- 20.681	682.634	12.634	+ 22.216		261.283254	81.888196	
D	698.831	28.831	- 30.060	675.167	5.167	- 7.085		155.320020		204.267635
E	703.746	33.746	+ 20.681	689.719	19.719	- 22.216	407.808679			749.701136
							1230.941619	416.603774	139.670926	952.968771
							814.337845			814.337845
							× 1/2 = 407.1689225			

面積計算書

Ⅰ 区 1 ブログ 16 計算者 精算者 備考 5P8-1

点	①	②	③	④	⑤	③ × ⑤		② × ⑥
	X	X - (定数)	X _n - 1 - X _n - 1	Y	Y - (定数)	+	-	+ -
C	752 673.680	(-152.667) 6.686	-90.970	-35 682.634	(-35.660) 22.634	-11.776	900.974980	78.734376
2P	667.861	0.861	-4.867	663.391	3.391	-19.533	16.503997	16.817913
70	668.819	1.819	+21.782	663.101	3.101	-1.338	67.545982	2.433822
37	659.642	22.643	+25.095	662.053	2.053	-29.490 -29.34	51.520035	56.381070 66.434568
b	693.914	26.914	+9.188	660.719	0.611	+13.114	5.613868 1.574396	352.950196
7	698.831	31.831	-20.228	675.167	15.167	22.023 +22.467	306.998096	201.014113 915.147077
							1024.277053	164.020637
							859.597168	1068.097277
							903.676640	903.676640
							449.798584	
							451.878320	

$$\frac{1}{2} = \frac{1024.277053 + 859.597168 + 903.676640 + 449.798584 + 451.878320}{2}$$