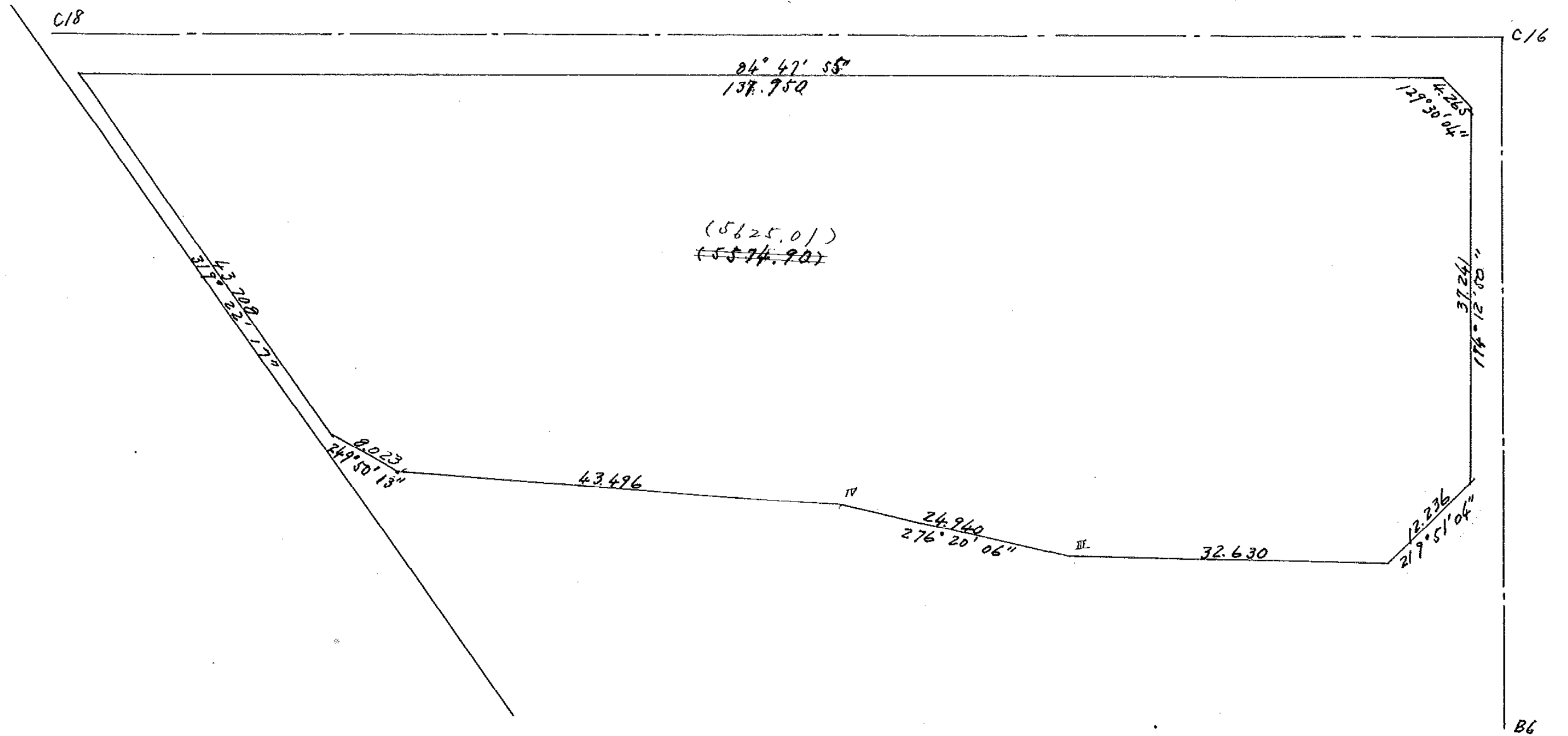
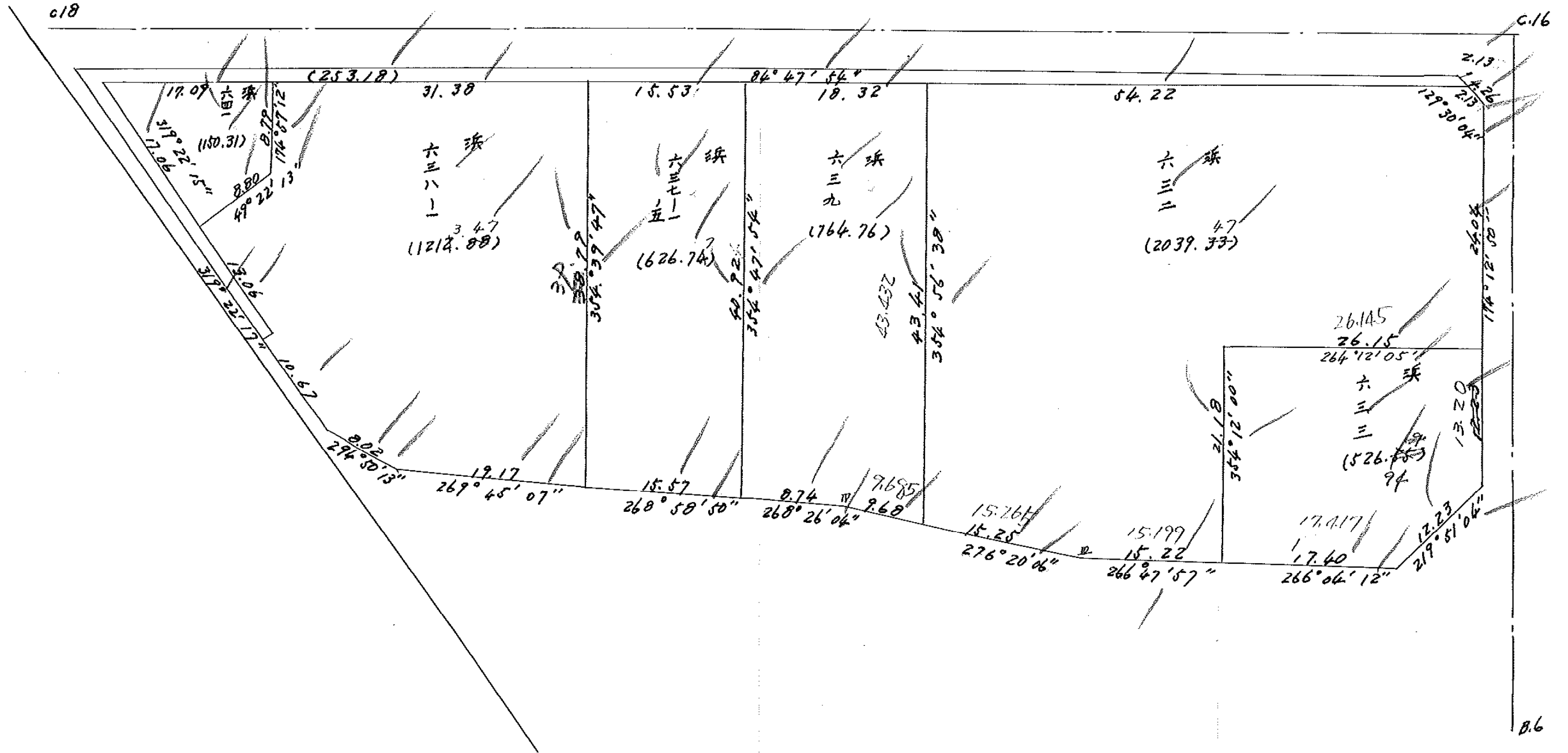


1-17



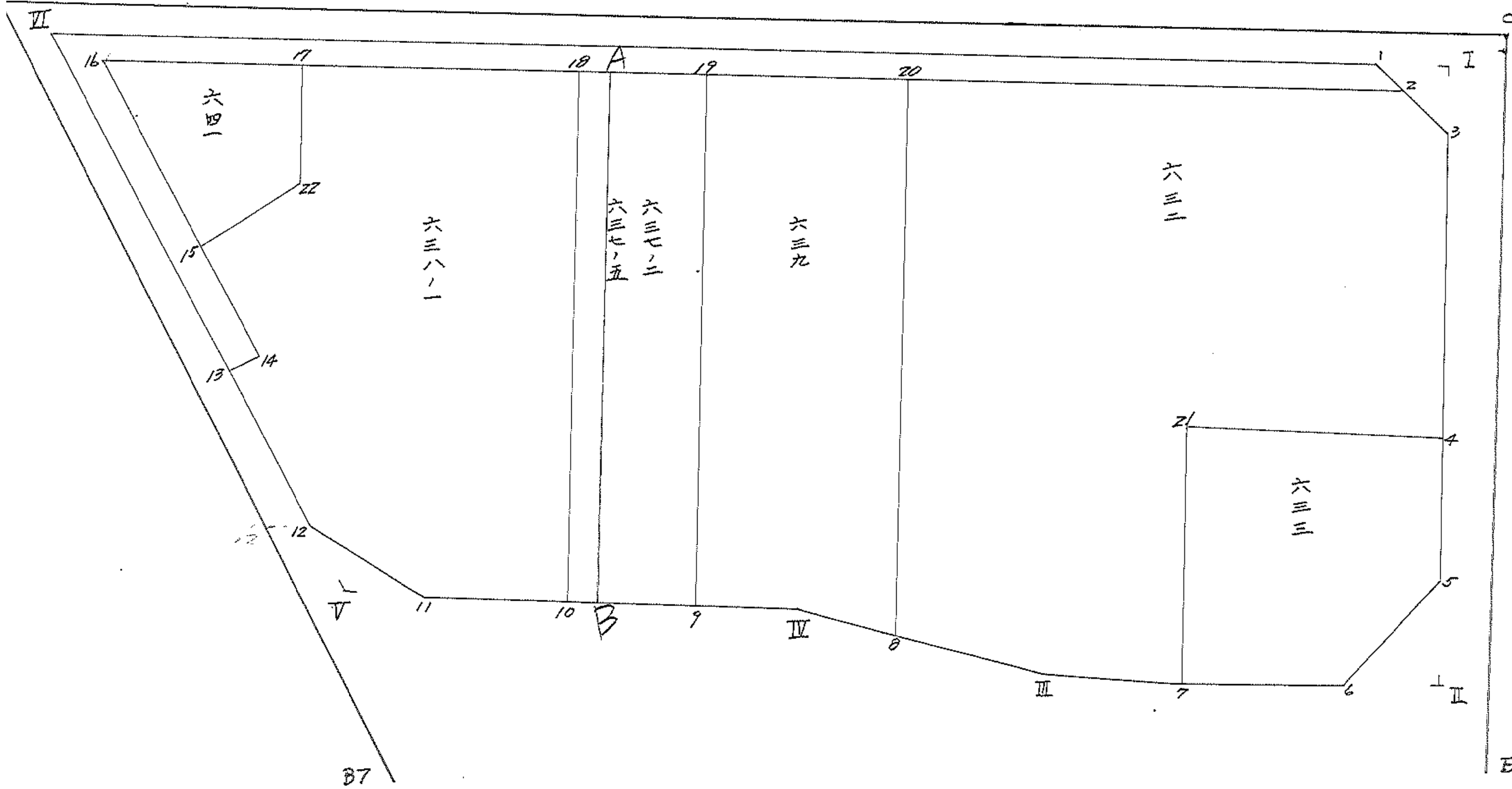
1-17



-18

17 7" ロット

C-16



面積計算書

工
区

1

ブ
ロ
ック

17

計
算
者



精
算
者



備
考

点	① X	② X-(定数)	③ $X_{n-1}-X_{n+1}$	④ Y	⑤ Y-(定数)	⑥ $Y_{n-1}-Y_{n+1}$	③ × ⑤	② × ⑥
	茨野 632							
2	666 744	-16.744	-3.559	768 296	-19.296	-55.644	65,115,464	931,703,136
3	668 101	-18.101	+25.274	766 650	-16.650	-4.069	420,812,100	73,652,969
4	672 018	-42.018	+26.559	764 227	-14.227	+23.594	377,854,873	991,372,692
21	694 660	-44.660	+23.721	770 244	-40.244	+23.876	954,627,924	1066,302,160
7	715 739	-65.739	+21.929	788 103	-38.103	+13.058	835,560,687	858,419,862
III	716 589	-66.589	-0.834	803 302	-53.302	+30.365	44,453,868	2021,974,985
8	714 905	-64.905	-44.929	818 468	-68.468	+18.992	3076,198,772	1,232,675,760
20	671 660	-21.660	-48.161	822 294	-72.294	-50.172	3481,751,334	1086,725,520
							6667,519,438	2588,855,604
							4078,663,834	2092,081,625
								6170,745,459
								4078,663,834
								$\times \frac{1}{2} = 2039,331,917$

面積計算書

工
区

1

ブ
ロ
ック

17

計
算
者



精
算
者



備
考

点	①	②	③	④	⑤	⑥	③	×	⑤	②	×	③	
	X	X-(定数)	$X_{n-1}-X_{n+1}$	Y	Y-(定数)	$Y_{n-1}-Y_{n+1}$	+		-	+		-	
	波野 633												
4	-152 692.018	(-152690.000) -2.018	+10.492	-35 764.227	(-35760.000) -4.227	-27.348				44.349684		55.188264	
5	705.152	-15.152	+22.528	762.896	-2.896	+6.510				65.241088		98.639520	
6	714.546	-24.546	+10.587	770.737	-10.737	+25.207				113.672619		618.731022	
7	715.739	-25.739	-19.886	788.103	-28.103	+19.507	558.856258					502.090673	
21	694.660	-4.660	-23.721	790.244	-30.244	-23.876	717.417724			111.262160			
							1276.274182			223.263391		166.450424	1219.461215
							1053.010791						+103.010791
							$\times \frac{1}{2} =$			526.5053955			1053.010791

面積計算書

工
区

1

ブ
ロック

17

計
算
者



精
算
者



備
考

点	①	②	③	④	⑤	⑥	③ ×	⑤	② ×	④
	X	X-(定数)	X _{n-1} -X _{n+1}	Y	Y-(定数)	Y _{n-1} -Y _{n+1}	+	-	+	-
	兵野 637-2 637-5									
19	-152 673.321	(-152650.000) -23.321	+39.347	-35 840.546	(-35930.000) -10.546	19.177			414.953462	447.226817
9	714.076	-64.076	+41.032	836.836	-6.836	+11.859			280.494752	757.877284
10	714.353	-64.353	-39.347	852.405	-22.405	+19.177	881.569535			1234.097481
18	674.729	-24.729	-41.032	856.013	-26.013	-11.859	1067.365416		293.261211	
	637-6 兵野						1948.934951	675.448214	740.488028	1993.974765
							1253.486737			1253.486737
							$\times \frac{1}{2} = 626.7433685$			
	兵野 641									
17	-152 677.575	(-152650.000) -27.575	+17.216	-35 887.272	(-35880.000) -7.272	-17.794			52.474752	490.669550
22	686.340	-36.340	+14.499	896.499	-6.499	+5.909			94.24502	214.733060
15	692.074	-42.074	-7.216	893.121	-13.121	+17.794	95.114096			748.664756
16	679.124	-29.124	-14.499	904.292	-24.292	-5.909	352.209708		172.693716	
							447.323804	146.689254	662.763266	963.397816
							300.684550			300.684550
							$\times \frac{1}{2} = 150.342275$			

面積計算書

工区

ブロック

計算者

精算者

備考

点	① X	② X-(定数)	③ $X_{n-1}-X_{n+1}$	④ Y	⑤ Y-(定数)	⑥ $Y_{n-1}-Y_{n+1}$	③ ×	⑤	② ×	⑥
							+	-	+	-
	浪野638-1									
18	-152 674.729	(-152650.000) -24.729	+36.778	-35 856.013	(-35850.000) -6.013	-34.867			221,146,119	862,226,043
10	714.353	-64.353	+39.707	852.405	-2.405	+15.568			95,495,335	1001,847,504
11	714.436	-64.436	-3.387	871.581	-21.581	+26.457	70,936,747			1704,783,252
12	711.066	-61.066	-11.472	878.862	-28.862	+14.233	331,104,864			869,152,378
13	702.964	-52.964	-9.079	885.814	-35.814	+5.814	325,155,306			307,932,686
14	701.987	-51.987	-10.890	884.676	-34.676	+7.367	377,621,640			382,988,229
15	692.074	-42.074	-15.647	893.181	-43.181	+1.822	675,653,107			76,658,828
22	686.340	-36.340	-14.499	886.498	-36.498	+5.909	529,184,502		214,733,60	
17	677.575	-27.575	-11.611	887.272	-37.272	-30.485	432,765,192		820,623,875	
							2742,421,358	316,641,449	1,917,582,978	43,433,362,887
							2425,779,909			2425,779,909
							1/2 1212,889,855			
							欠田面積 0.59 m ²			
							1213.47			

合筆あり

面積計算書

工区

1

ブロック

17

計算者



精算者



備考

点	① X	② X-(定数)	③ $X_{n-1}-X_{n+1}$	④ Y	⑤ Y-(定数)	⑥ $Y_{n-1}-Y_{n+1}$	③ ×	⑤	② ×	⑥
							+	-	+	-
	次野639									
20	-152 671.660	(-152670.000) -1.660	+41.584	-35 822.294	(-35800.000) -22.294	-22.078			927.073696	-36.649480
8	714.905	-44.905	+42.177	818.468	-18.468	+5.796			278.924836	260.269390
IV	713.837	-43.837	-0.829	828.090	-28.090	+18.368	23.286610			805.198016
9	714.076	-44.076	-40.516	836.836	-36.836	+12.456 78	1492.447376			549.010656
19	673.321	-3.321	-42.416	840.546	-40.546	-14.542	1719.799136		18.293992	
							3235.538122	1705.998532	84.943462	1614.478052
							1529.534590			1529.534590
							$\times \frac{1}{2} = 764.767295$			

面積計算書

工区

1

ブロック

17

計算者

精算者

備考

点	①	②	③	④	⑤	⑥	③ ×	⑤	② ×	⑥
	X	X-(定数)	$X_{n-1}-X_{n+1}$	Y	Y-(定数)	$Y_{n-1}-Y_{n+1}$	+	-	+	-
	水路									
1	-152 665.388	(-15650.000) -15.388	-11.150	-35 769.941	(-35700.000) -69.941	-139.027	77984.2150		2139.347476	
2	666.744	-16.744	+13.736	768.296	-68.296	+134.351		938.113856	2249.573144	
16	679.124	-29.124	+35.243	904.292	-204.292	+116.380		7199.862856	3389.45120	
14	701.987	-51.987	+23.830	884.676	-184.676	-18.478		4402.675840	960.615786	
13	702.964	-52.964	-24.093	885.814	-185.814	+22.647		4476.816702	1199.475708	
V1	677.894	-27.894	-37.576	907.323	-207.323	-115.873		7790.369048	3232.161462	
								13047.027700	2540.652652	6382.124724
								506.375248	506.375248	
								1/2 253.187624		

面積計算書

工
区

/

ブ
ロ
ク

17

計
算
者

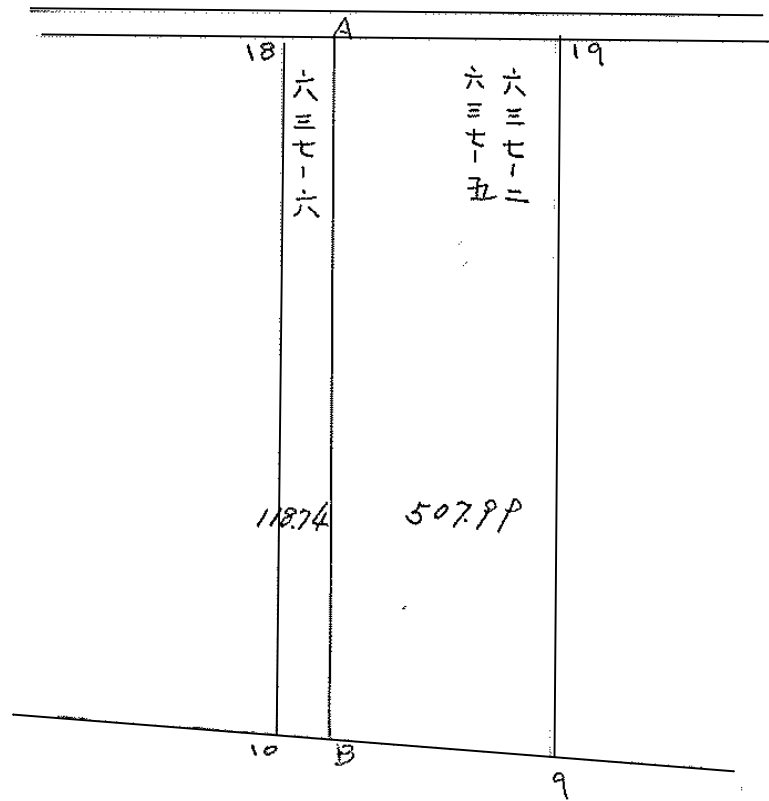


精
算
者



備
考

点	①	②	③	④	⑤	⑥	③ × ⑤	② × ⑤
	X	X-(定数)	$X_{n-1}-X_{n+1}$	Y	Y-(定数)	$Y_{n-1}-Y_{n+1}$	+	-
	角切							
I	⁻¹⁵² 665.116	⁻¹⁵²⁶⁶⁰ -5.116	+2.713	⁻³⁵ 766.953	⁻³⁵⁷⁶⁰ -6.953	-3.291		18,863,489 - 16,836,756
3	668.101	-8.101	+0.272	766.650	-6.650	+2.988		1,808,800
1	665.388	-5.388	-2.985	769.941	-9.941	+0.303	29,673,885	1,632,564
							29,673,885	20,672,289 - 16,836,756 - 25,838,352
							9,001,596	9,001,596
							$\times \frac{1}{2} = 4,500,798$	
II	⁻¹⁵² 713.957	⁻¹⁵²⁷⁰⁰ -13.957	+9.394	⁻³⁵ 762.014	⁻³⁵⁷⁵⁰ -12.014	+7.241		108,652,737
6	714.546	-14.546	-8.705	770.737	-20.737	+0.882	180,515,585	12,829,572
5	705.152	-5.152	-0.689	762.896	-12.896	-8.723	8,885,344	44,940,896
							189,400,929	112,859,516 - 44,940,896 - 121,482,309
							76,541,413	76,541,413
							$\times \frac{1}{2} = 38,270,706.5$	



面積計算書

工区

1

ブロック

17

計算者

精算者

備考

637-2
637-5

点	①	②	③	④	⑤	⑥	③ × ⑤		② × ⑥	
	X	X - (定数)	X _{n-1} - X _{n+1}	Y	Y - (定数)	Y _{n-1} - Y _{n+1}	+	-	+	-
A	712 674.45	(-152.673) 1.859	-40.979	753.045	(-35.836) 17.045	-9.899	698.487055		12.954461	
19	673.22	0.321	+39.617	860.566	4.546	-16.209		180.098882	5.203089	
7	714.076	41.076	+40.979	836.836	0.836	+8.879		34.258444		364.713804
B	714.200	41.300	-39.617	847.625	13.425	+16.209	531.858225			669.431700
							1230.345280	214.357326	18.157550	1034.145504
							1015.987954			1015.987954
							Y ₂ = 507.993977			