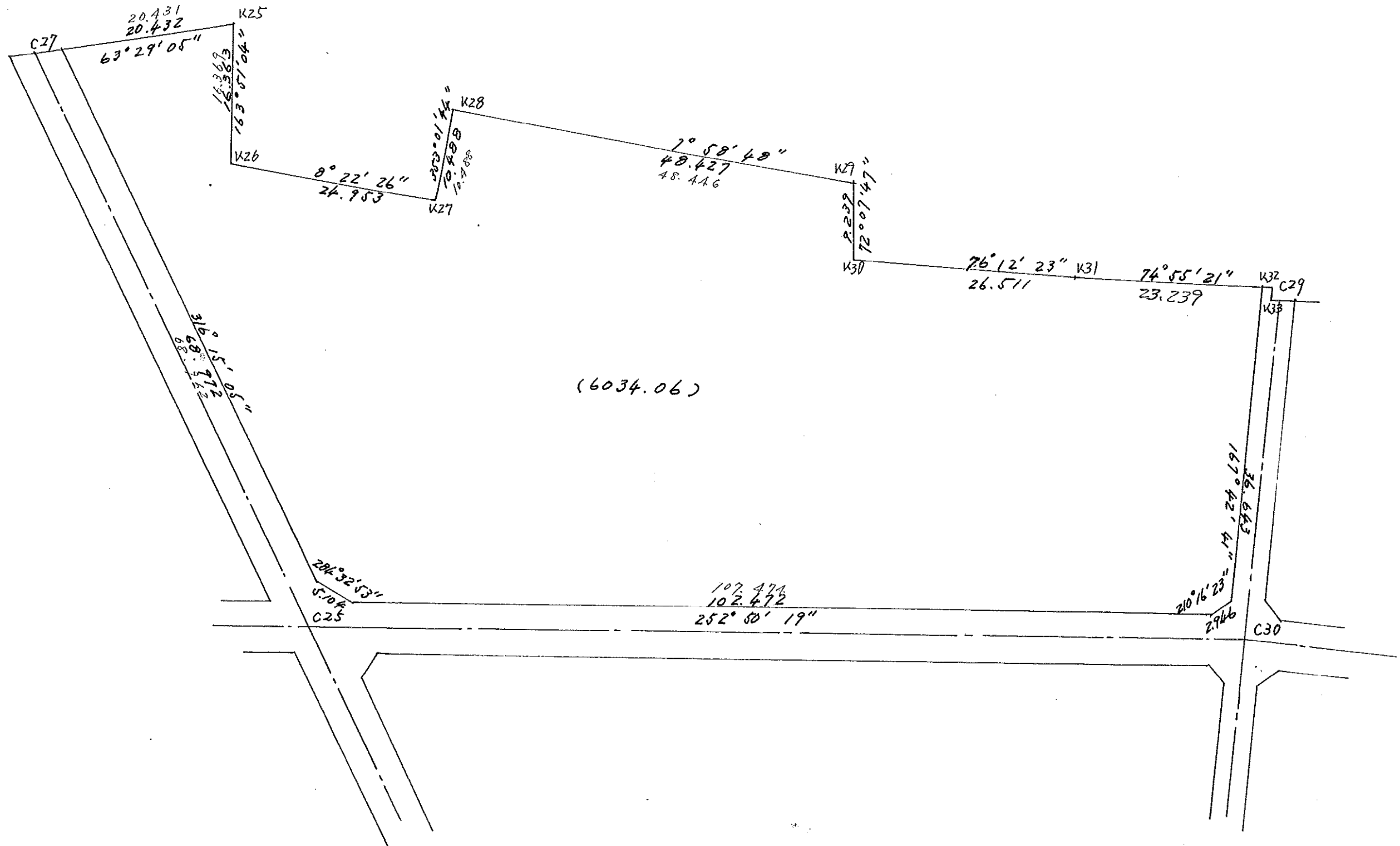
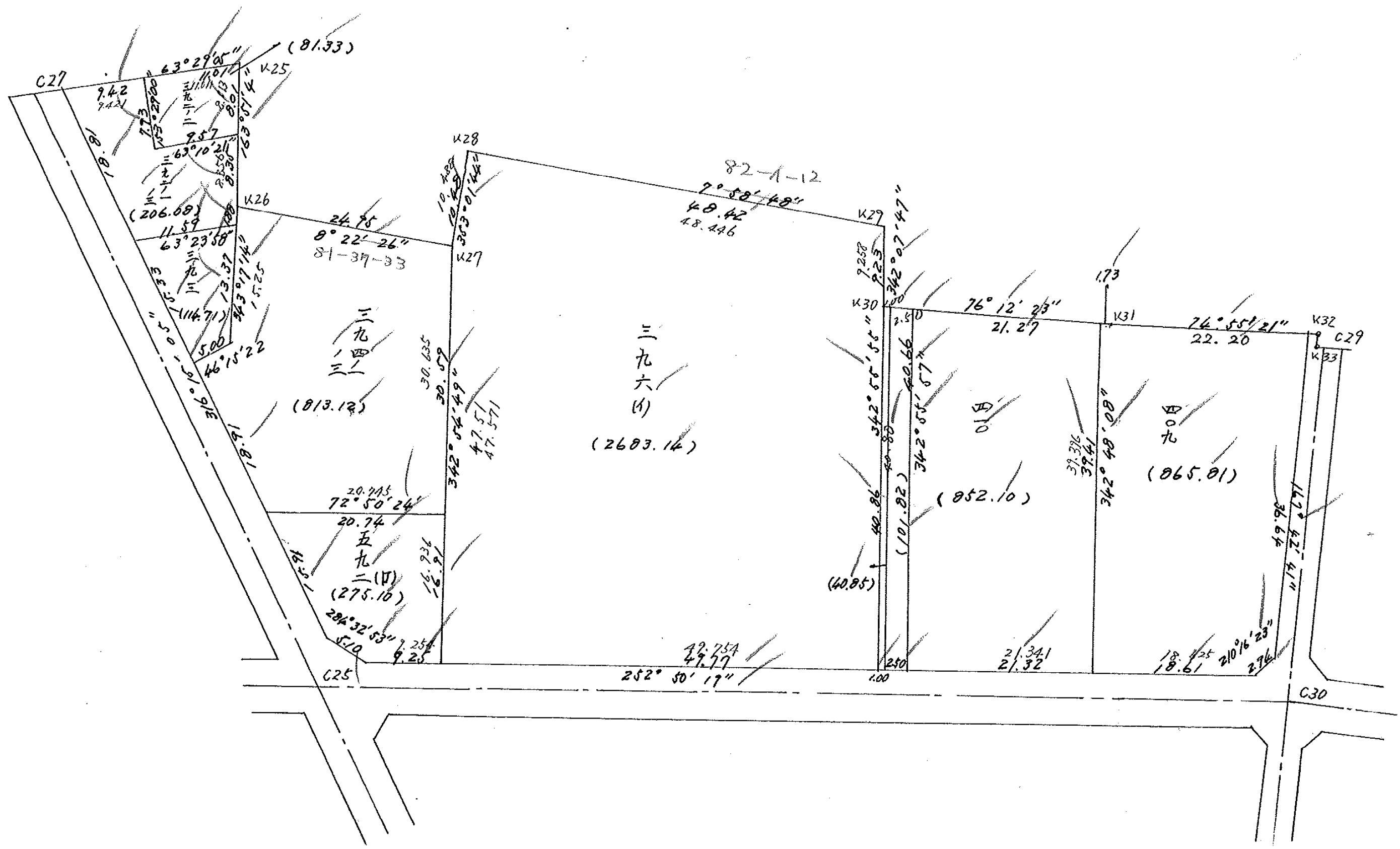
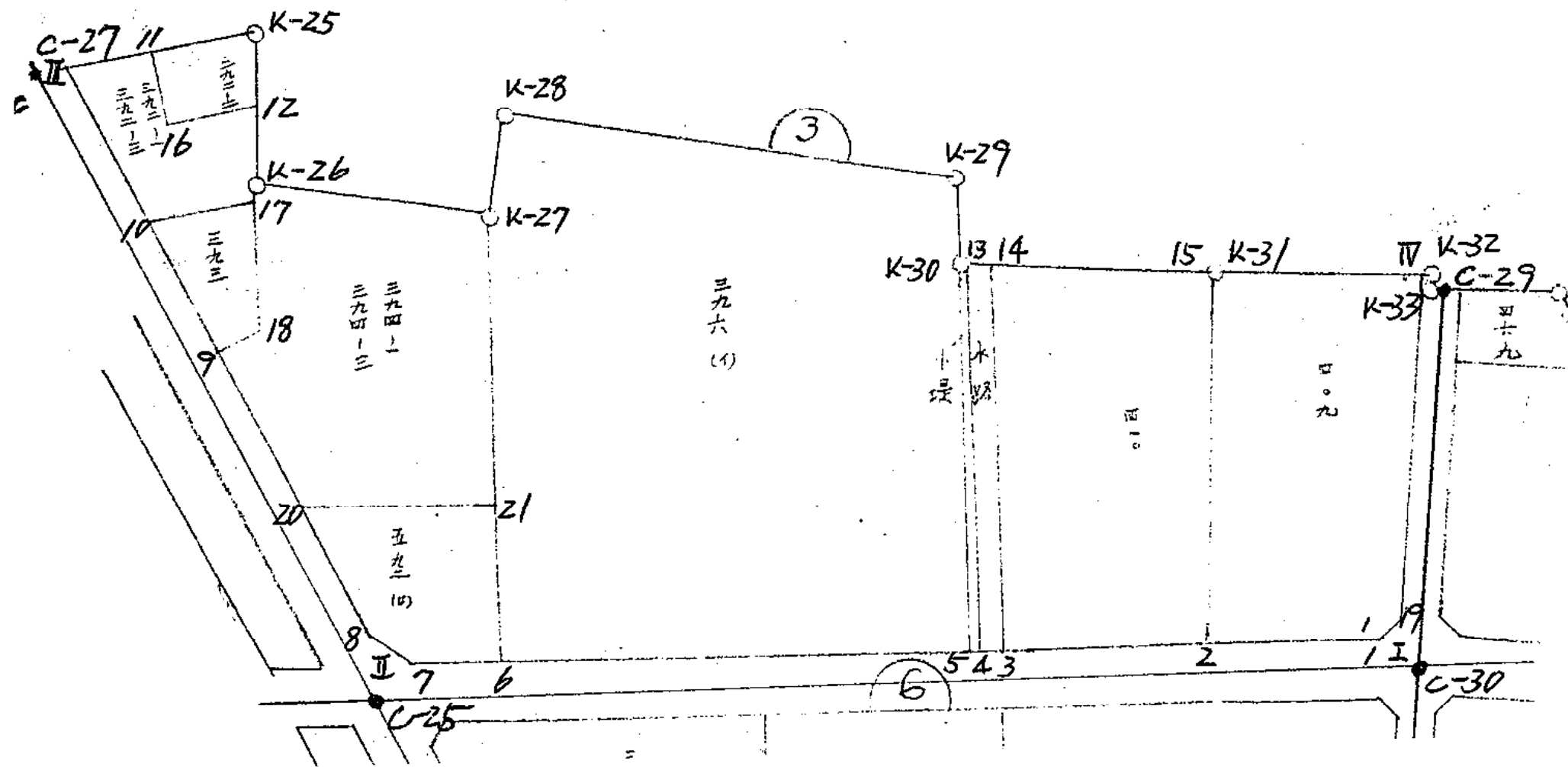


1-3



1-3





面積計算書

工
区

1

ブロック

3

計測者



観測者



備考

点	①	②	③	④	⑤	⑥	③ × ⑤	② × ⑥		
	X	X-(定数)	X _{n-1} -X _{n+1}	Y	Y-(定数)	Y _{n-1} -Y _{n+1}			+	-
I	-152422.518'	⁽¹⁵²³⁰⁰⁾ -122.518'	+69.469'	-35465.210'	⁽³⁵⁴⁰⁰⁾ -65.210'	+94.463'		4530.073490'	11573.417874'	
II	-454.229'	-154.229'	-20.280'	-567.897'	-167.897'	+152.455'	2004.951160'		73512.982195'	
III	-402.238'	-102.238'	-61.113'	-617.665'	-217.665'	+31.485'	13302.161145'		3218.913430'	
K-25	-393.116'	-93.116'	+65.95'	-599.382'	-199.382'	-22.934'	1314.924290'	2126.210744'		
26	-408.833'	-108.833'	+12.083'	-594.831'	-194.831'	-29.238'	2354.142973'	3182.059254'		
27	-405.199'	-105.199'	-14.045'	-570.144'	-170.144'	-23.414'	2389.672480'	2463.129396'		
28	-394.788'	-94.788'	-17.134'	-571.417'	-171.417'	-46.635'	2937.058878'	4425.177788'		
29	-388.065'	-88.065'	+2.070'	-523.459'	-123.459'	-50.793'	255.560130'	4473.085545'		
30	-396.858'	-96.858'	+2.472'	-520.624'	-120.624'	-28.582'	298.182528'	2768.385356'		
31	-390.537'	-90.537'	-12.098'	-494.877'	-94.877'	-47.190'	1147.821946'	4272.441030'		
IV	-384.760'	-84.760'	+31.981'	-473.434'	-73.434'	-29.667'	2348.492754'	2514.574920'		
							23181.665109'	11101.376165'	26225.074015'	38305.363457'
							17080.289444' × 1/2 = 1040.144722'		12080.289444'	

面積計算書

工区

1

ブロック

3

計算者



精算者



備考

点	①	②	③	④	⑤	⑥	③ ×	⑤	② ×	⑥
	X	X-(定数)	$X_{n-1}-X_{n+1}$	Y	Y-(定数)	$Y_{n-1}-Y_{n+1}$	+	-	+	-
	410									
2	-152 428.600	(-152390) - 38.600	+ 43.943	-35 484.906	(-35480) - 4.906	+ 8.726				
3	434.893	- 44.893	- 32.578	505.285	- 25.285	+ 32.313	823.734730			336.823600
14	396.022	- 6.022	- 43.943	517.219	- 37.219	- 8.726	1635.514517			1450.627509
15	390.950	- 0.950	+ 32.578	496.559	- 16.559	- 32.313				
							2459.249247	755.043460	83.245322	1787.451109
							1704.205787			1704.205787
							$\frac{1}{2} = 852.1028935$			
	409									
1	-152 423.108	(-152380) - 43.108	+ 8.036	-35 467.121	(-35460) - 7.121	+ 19.270				
2	428.600	- 48.600	- 32.158	484.906	- 24.906	+ 29.438	800.927148			830.691160
15	390.950	- 10.950	- 38.063	496.559	- 36.559	+ 9.971	1391.545217			1430.686800
累計	390.537	- 10.537	- 6.190	494.877	- 34.877	- 23.125	215.888630			109.182450
IV	384.760	- 4.760	+ 30.027	473.034	- 13.434	- 29.241				
19	420.564	- 40.564	+ 38.348	465.636	- 5.636	- 6.313				
							2408.360975	676.766402	638.935817	2370.560410
							1731.624593			1731.624593
							$\frac{1}{2} = 865.8122965$			

面積計算書

工区

1

ブロック

3

計算者



精算者



備考

点	① X	② X-(定数)	③ $X_{n-1}-X_{n+1}$	④ Y	⑤ Y-(定数)	⑥ $Y_{n-1}-Y_{n+1}$	③ ×	⑤	② ×	⑥
							+	-	+	-
	小堤									
4	⁻¹⁵² 435.631	⁽⁻¹⁵²³⁹⁰⁾ - 45.631	+ 39.307	⁻³⁵ 507.673	⁽⁻³⁵⁵⁰⁰⁾ - 7.673	- 11.022			301.602611	- 502.944882
5	435.926	- 45.926	- 38.773	508.629	- 8.629	+ 12.951	334.572217			594.787626
界30	396.858	- 6.858	- 39.307	520.624	- 20.624	+ 11.022	810.667568			75.588876
13	396.619	- 6.619	+ 38.773	519.651	- 19.651	- 12.951			761.928223	85.722669
									1145.239785	1063.530834
									588.667551	670.376502
									81.708951	81.708951
									<u>1/2 = 40.8544755</u>	
	水路									
3	⁻¹⁵² 434.893	⁽⁻¹⁵²³⁹⁰⁾ - 44.893	+ 39.609	⁻³⁵ 505.285	⁽⁻³⁵⁵⁰⁰⁾ - 5.285	- 9.546			209.333565	- 428.548578
4	435.631	- 45.631	- 38.274	507.673	- 7.673	+ 14.366	293.676402			655.534946
13	396.619	- 6.619	- 39.609	519.651	- 19.651	+ 9.546	778.356459			63.184974
14	396.022	- 6.022	+ 38.274	517.219	- 17.219	- 14.366			659.040.006	86.512052
									1072.032861	868.373571
									515.060630	718.719920
									203.659290	203.659290
									<u>1/2 = 101.829645</u>	

面積計算書

工
区

1

ブ
ロ
ック

3

計
算
者



精
算
者



備
考

点	①	②	③	④	⑤	⑥	③ ×	⑤	② ×	⑥
	X	X-(定数)	$X_{n-1}-X_{n+1}$	Y	Y-(定数)	$Y_{n-1}-Y_{n+1}$	+	-	+	-
	592 B									
6	-152 450.612	(-152430) - 20.612	+ 18.900	-35 556.185	(-35550) - 6.185	+ 3.877				
7	453.344	- 23.344	+ 1.450 + 7.772	565.031	- 15.031	+ 13.786				
8	452.062	- 22.062	- 8.779	569.971	- 19.971	+ 15.946	255.209407			
20	440.565	- 10.565	- 17.618	580.977	- 30.977	- 8.817	545.752786		93.151605	
21	434.044	- 4.044	+ 10.047	561.154	- 11.154	- 24.792				
							800.962175	250.755688	203.327253	753.533760
							550.206507			550.206507
							$\frac{1}{2} = 275.1032535$			
	396 A									
5	-152 435.926	(-152380) - 55.926	+ 53.754	-35 508.629	(-35500) - 8.629	+ 35.561				
6	450.612	- 70.612	- 30.727	556.185	- 56.185	+ 61.515	1726.396495			
界27	405.199	- 25.199	- 55.824	570.144	- 70.144	+ 15.232	3915.718656			
界28	394.788	- 14.788	- 17.134	571.417	- 71.417	- 46.685	1223.658878		690.377780	
界29	388.065	- 8.065	+ 2.070	523.459	- 23.459	- 50.793		48.560130	409.645545	
界30	396.858	- 16.858	+ 47.861	520.624	- 20.624	- 14.830		987.085264	250.004140	
							6865.774029	1499.488660	1350.027465	6716.312834
							5366.285369			5366.285369
							$\frac{1}{2} = 2683.1426845$			

面積計算書

工
区

1

ブ
ロック

3

計
算
者



精
算
者



備
考

点	①	②	③	④	⑤	⑥	③ × ⑤	② × ⑥
	X	X-(定数)	$X_{n-1} - X_{n+1}$	Y	Y-(定数)	$Y_{n-1} - Y_{n+1}$	+	-
		394 - 1, 3						
21	-152 434.000	(-152400) 34.000	+ 35.366	-35 561.154	(-35560) - 1.154	+ 10.833		40.812364
20	440.565	- 40.565	- 7.543	580.977	- 20.977	+ 32.902	158.229511	
9	426.901	- 26.901	- 17.121	594.056	- 34.056	+ 7.467	583.072776	
18	423.000	- 23.000	- 16.267	590.000	- 30.000	+ 0.234	495.232548	
17	410.634	- 10.634	- 14.611	594.290	- 34.290	+ 4.387	501.011190	
界 26	408.833	- 8.833	- 5.435	594.831	- 34.831	- 24.106	189.306085	213.281618
界 27	405.199	- 5.199	+ 25.611	570.100	- 10.100	- 33.677		259.797984
							1926.852510	388.368341
							1626.242162	2014.610503
								1626.242162
							<u>1/2 = 813.121081</u>	

面積計算書

工
区

1

ブ
ロ
ック

3

計
算
者



精
算
者



備
考

点	①	②	③	④	⑤	⑥	③ ×	⑤	② ×	⑥
	X	X-(定数)	$X_{n-1} - X_{n+1}$	Y	Y-(定数)	$Y_{n-1} - Y_{n+1}$	+	-	+	-
9	³⁹³ -152 426.901	(-152410) -16.901	-7.618	⁻³⁵ 594.056	(-35590) -4.056	+14.214	30.898608			240.230814
10	415.826	-5.826	-16.267	604.658	-14.658	+0.234	238.441686			1.363284
17	410.634	-0.634	+7.618	594.290	-4.290	-14.214		32.681220	9.011676	
18	423.444	-13.444	+16.267	590.444	-0.444	-0.234		7.222548	3.145896	
							269.340294	39.903768	12.157572	241.594098
							229.436526			229.436526
							<u>1/2 = 114.718263</u>			

面積計算書

工
区

1

ノ
マ
ク

3

計
算
者



類
算
者



備
考

392-1
392-3

392-2

点	①	②	③	④	⑤	⑥	③ × ⑤		② × ⑥		
	X	X-(定数)	X _{n-1} -X _{n+1}	Y	Y-(定数)	Y _{n-1} -Y _{n+1}	+	-	+	-	
10	-152415.826	⁽¹⁵²³⁰⁰⁾ -115.826	-8.396	-35604.658	⁽³⁵⁵⁰⁰⁾ -104.658	+23.375	878.708568			2707.432750	
II	402.238	-102.238	-17.794	617.665	-117.665	+4.577	2093.731010			467.943326	
11	398.032	-98.032	+2.891	609.235	-109.235	-11.971		315.798385	1173.541072		
16	405.129	-105.129	+2.778	605.694	-105.694	-12.081		293.617932	1270.063449		
12	400.810	-100.810	+3.704	597.154	-97.154	-10.863		359.858416	1095.099030		
K26	408.833	-108.833	+9.824	594.831	-94.831	-2.864		931.619744	311.897712		
17	410.634	-110.634	+6.993	594.290	-94.290	+9.827		659.369970		1087.200318	
								2972.435578	2560.264447	3850.001263	4262.576394
								412.175131			412.175131
								<u>1/2 = 206.0875655</u>			
16	-152405.129	⁽¹⁵²³⁰⁰⁾ -105.129	-2.778	-35605.694	⁽³⁵⁵⁰⁰⁾ -105.694	+12.081	293.617932			1270.063449	
11	398.032	-98.032	-12.013	609.235	-109.235	-6.312	1312.240055		618.777984		
K25	393.116	-93.116	+2.778	599.382	-99.382	-12.081		276.083196	1124.934396		
12	400.810	-100.810	+12.013	597.154	-97.154	+6.312		1187.111002		636.312720	
								1605.857987	1443.194198	1743.712380	1906.376169
								162.663789			162.663789
								<u>1/2 = 81.3318945</u>			

面積計算書

工
区

1

ブ
ロ
ック

3

計
算
者



精
算
者



備
考

点	①	②	③	④	⑤	⑥	③ ×	⑤	② ×	④
	X	X-(定数)	$X_{n-1} - X_{n+1}$	Y	Y-(定数)	$Y_{n-1} - Y_{n+1}$	+	-	+	-
	角切									
19	⁻¹⁵² 420.564	(-152420) - 0.564	- 0.570	⁻³⁵ 465.636	(-35460) - 5.636	- 1.911	3.325240		1.077804	
I	422.518	- 2.518	+ 2.444	465.210	- 5.210	+ 1.485		13.254240		3.739230
1	423.108	- 3.108	- 1.954	467.121	- 7.121	+ 0.426	13.914434			1.324008
							17.237674	13.254240	1.077804	5.063238
							3.985434			3.985434
							<u>1/2 = 1.992717</u>			
	角切									
7	⁻¹⁵² 453.304	(-152450) - 3.344	+ 2.167	⁻³⁵ 565.031	(-35560) - 5.031	- 2.074		10.902177	6.935456	
II	454.229	- 4.229	- 1.282	567.897	- 7.897	+ 4.940	10.123954			20.891260
8	452.062	- 2.062	- 0.885	569.971	- 9.971	- 2.866	8.824335		5.909692	
							18.948289	10.902177	12.845148	20.891260
							8.046112			8.046112
							<u>1/2 = 4.023056</u>			

