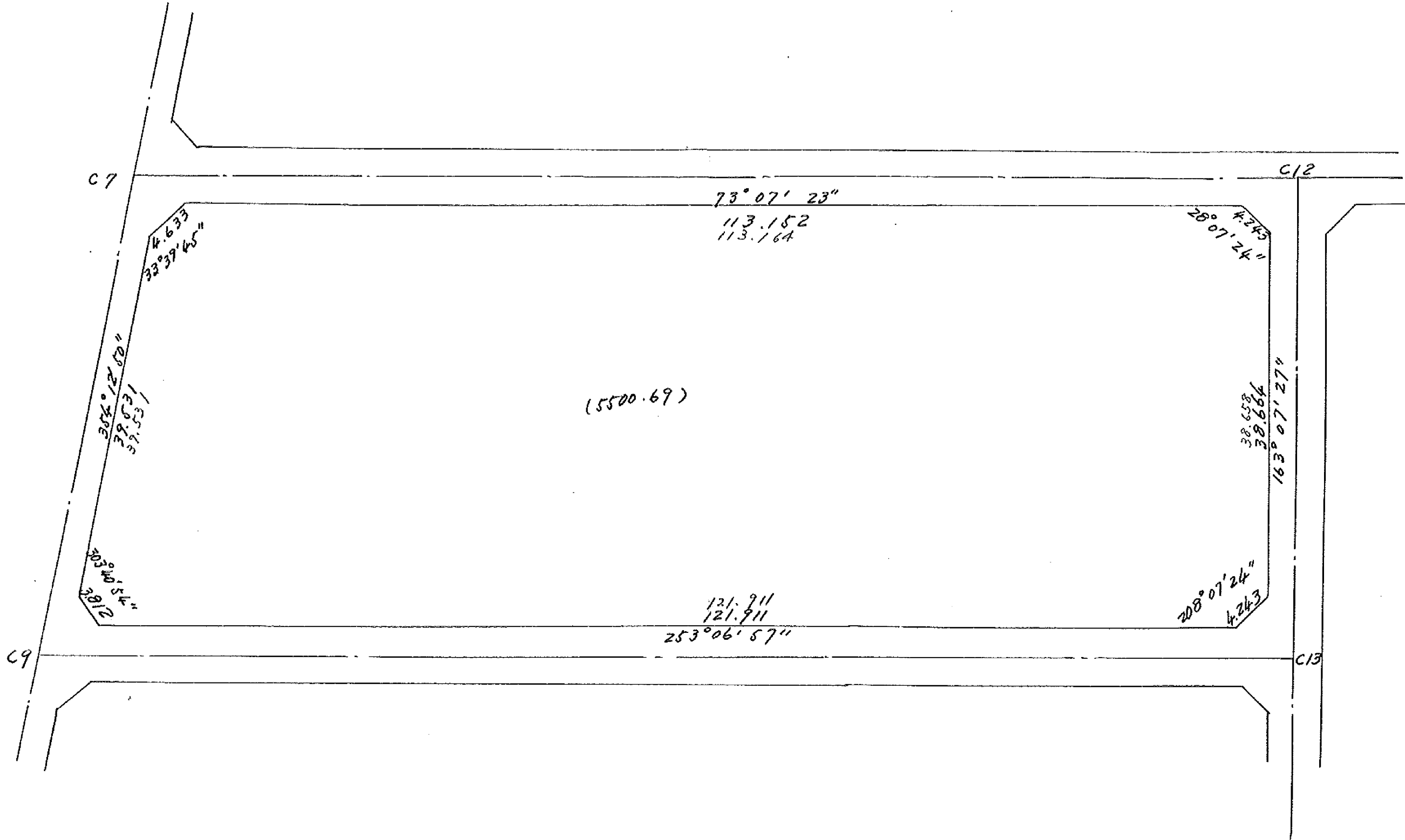
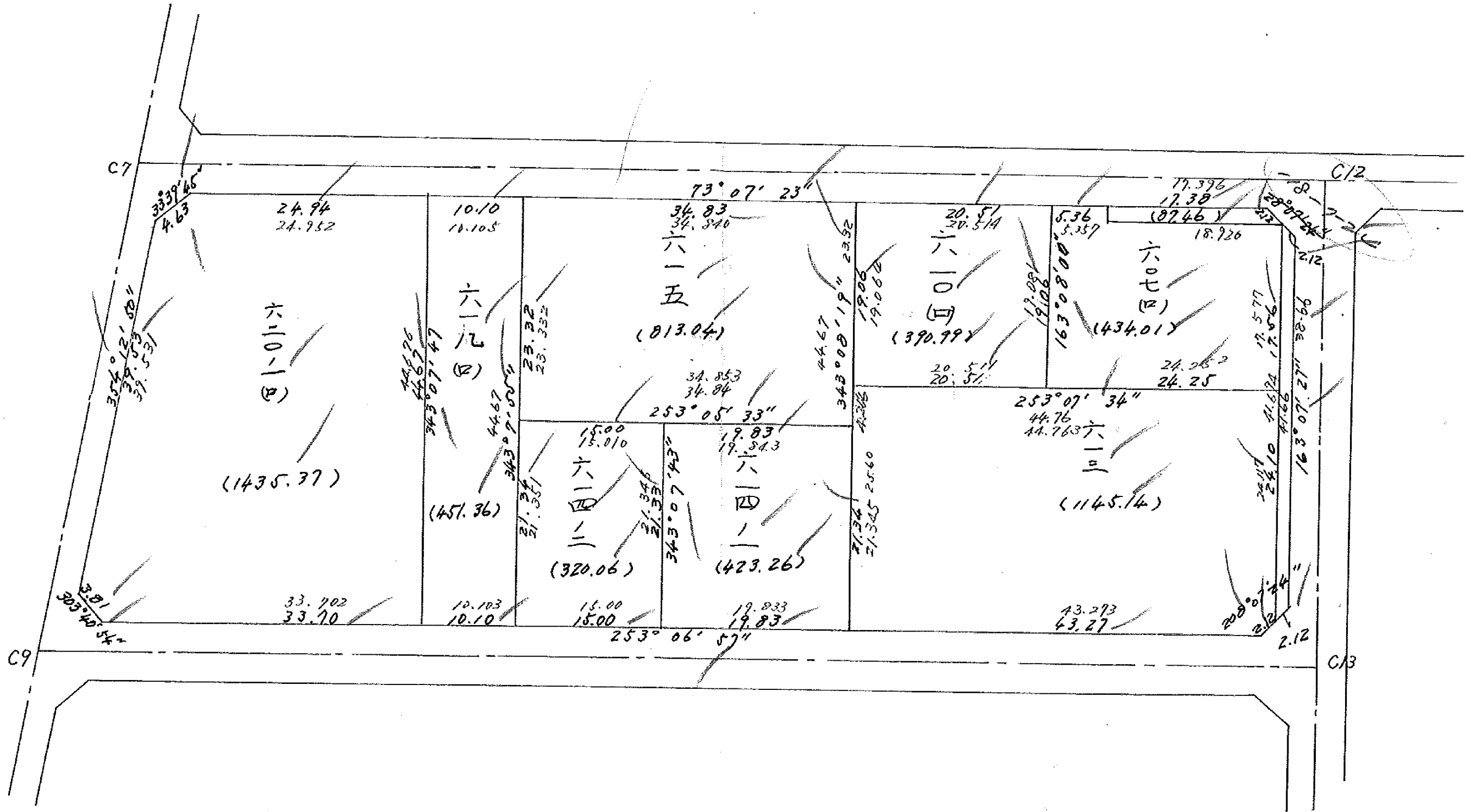
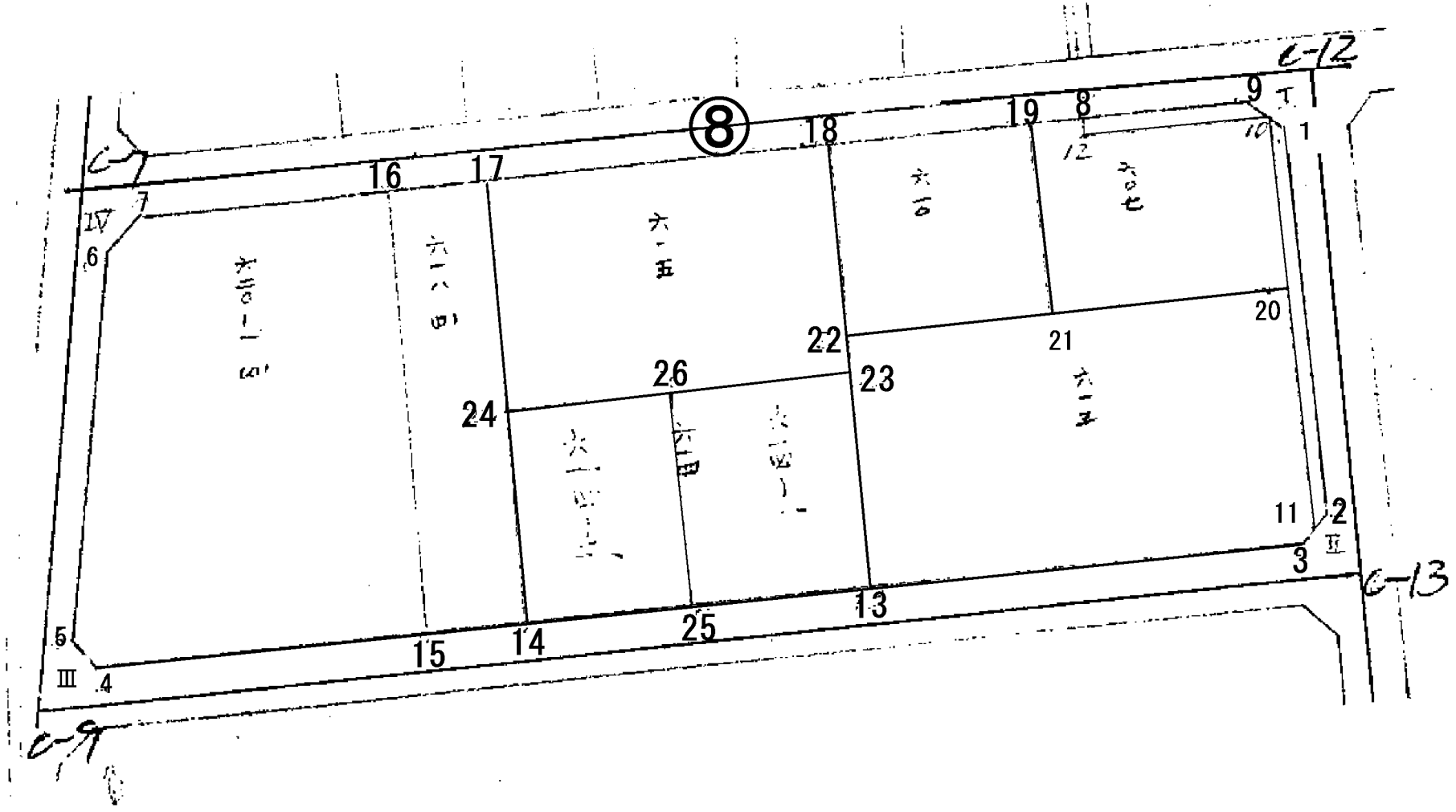


1-8







面積計算書

工区

/

ブロック

8

計量者



監理者



備考

点	①	②	③	④	⑤	⑥	③ × ⑤	② × ⑥		
	X	X-(定数)	X _{n-1} -X _{n+1}	Y	Y-(定数)	Y _{n-1} -Y _{n+1}			+	-
I	-152488.893	⁽¹⁵²⁴⁰⁰⁾ -88.893	+8.149	-35661.270	⁽³⁵⁶⁰⁰⁾ -61.270	-126.988		499.289230	11288344284	
II	-531.634	-131.634	+79.891	-648.304	-48.304	+109.432		3859.854864	14404.971888	
III	-568.784	-168.784	-8.149	-770.702	-170.702	+126.988	1391.050598		21433.542592	
IV	-523.485	-123.485	-79.891	-775.292	-175.292	-109.432	14204.253172		13513.210520	
							15395.303770	4358344094	24801554804	35838.514480
							11036.959676		11036.959676	
							<u>1/2 = 5518.479838</u>			

面積計算書

工区 1 8 計算者 精算者 備考

点	① X	② X-(定数)	③ $X_{n-1}-X_{n+1}$	④ Y	⑤ Y-(定数)	⑥ $Y_{n-1}-Y_{n+1}$	③ × ⑤ +	⑤ -	② × ⑥ +	⑥ -
	水路 -152	(-152480)								
1	491.764	- 11.764	+ 38.999	660.397	- 20.397	- 14.966			795.540601	176.060024
2	528.763	- 48.763	+ 38.870	649.175	- 9.175	- 10.224			356.632250	498.552912
11	530.634	- 50.634	- 37.999	650.175	- 10.175	+ 13.095	386.639825			663.052230
10	490.764	- 10.764	- 34.386	662.270	- 22.270	+ 30.171	765.776220			324.760644
12	496.248	- 16.248	+ 4.048	680.346	- 40.346	+ 18.511		163.320608		300.766728
8	494.812	- 14.812	- 6.484	680.781	- 40.781	- 16.205	264.424004		240.028460	
9	489.764	- 9.764	- 3.048	664.141	- 24.141	- 20.382	73.581768		199.009848	
							1490.421817	1315.493459	1113.651244	1288.579602
							174.928358			174.928358
							<u>$\frac{1}{2} = 87.464179$</u>			

面積計算書

工
区

1

ブ
ロ
ック

8

計
算
者



精
算
者



備
考

点	①	②	③	④	⑤	⑥	③ ×	⑤	② ×	④
	X	X-(定数)	$X_{n-1} - X_{n+1}$	Y	Y-(定数)	$Y_{n-1} - Y_{n+1}$	+	-	+	-
	152	(-152490)			(-35650)					
19	496.369	- 6.369	- 19.800	685.912	- 35.912	+ 0.400	711.057600			25427600
8	494.812	- 4.812	- 0.121	680.781	- 30.781	- 5.566	3.724501		26.783592	
12	496.248	- 6.248	- 4.048	680.346	- 30.346	- 18.511	122.840608		115.656728	
10	490.764	- 0.764	+ 11.324	662.270	- 12.270	- 23.175		138.945480	17.705700	
20	507.572	- 17.572	+ 23.848	657.171	- 7.171	+ 18.111		171.014008		318.246492
21	514.612	- 24.612	- 11.203	680.381	- 30.381	+ 28.741	340.358343			707.373492
							1177.981052	309.959488	160.146020	1028.167584
							868.021564			868.021564
							$\frac{1}{2} = 434.010782$			

面積計算書

工区 1
 ブロック 8
 計測者
 図検者

測野
 備考 610-B, 618

点	①	②	③	④	⑤	⑥	③ × ⑤	② × ⑥
	X	X-(定数)	X _{n-1} -X _{n+1}	Y	Y-(定数)	Y _{n-1} -Y _{n+1}	+	-
18	-152502.323	(-152470.000) - 12.323	- 24.197	25705.509	(-25680.000) - 25.509	- 14.098	617.967183	173.729654
19	476.369	6.369	+ 12.289	685.912	5.912	- 25.158	72.652568	160.231302
21	514.612	24.612	+ 24.197	680.881	0.881	+ 14.098	9.219057	246.977776
22	520.566	20.566	- 12.289	700.010	20.010	+ 25.158	245.902890	768.979428
							263.870073	81.871625
							781.978448	333.960956
							1/2 = 290.999224	1115.959404
								781.978448
22	-152520.566	(-152500.000) - 20.566	- 27.501	25700.010	(-25680.000) - 20.010	- 25.411	1875.425010	728.262626
20	507.572	7.572	+ 10.068	657.171	7.171	- 49.825	72.177628	277.350620
11	530.634	30.634	+ 24.933	650.175	0.175	- 5.996	4.363275	183.681464
3	532.505	22.505	+ 14.439	651.175	1.175	+ 42.407	16.966825	1378.439535
10	545.073	45.073	- 11.939	692.582	42.582	+ 48.825	508.386498	2201.139955
							2283.811508	92.526728
							2290.284780	1289.294710
							1/2 = 1145.142390	2579.579470
								2290.284780

1010101

11111

面積計算書

工区

/

ブロック

8

記号者



調査者



備考

浜野 614-1, 614-2

点	①	②	③	④	⑤	⑥	③ × ⑤	② × ⑥
	X	X-(定数)	X _{n-1} -X _{n+1}	Y	Y-(定数)	Y _{n-1} -Y _{n+1}	+	-
26	-152530.416	(-152520.000) - 10.416	- 26.186	- 85717.752	(-85610.000) - 27.752	- 12.787	726.713872	108.187392
23	524.647	- 4.647	+ 14.657	678.773	- 8.773	- 25.170		128.525861
13	545.073	- 25.073	+ 26.186	672.582	- 2.582	+ 12.787		67.612252
28	550.833	- 30.833	- 14.657	711.560	- 21.560	+ 25.170	316.004920	776.06661
							1042.78792	176.178113
							846.520679	250.543382
							1/2 = 423.2603395	1076.675061
								846.520679
								分筆後の座標なし
24	-152534.780	(-152530.000) - 4.780	- 24.774	- 85732.109	(-85710.000) - 22.109	- 8.163	547.728366	39.019140
26	530.416	- 0.416	+ 16.053	717.752	- 7.752	- 20.549		124.442856
25	550.833	- 20.833	+ 24.774	711.560	- 1.560	+ 8.163		38.647440
14	545.190	- 25.190	- 16.053	725.915	- 15.915	+ 20.549	255.483495	170.059971
							803.211861	475.67524
							640.121565	627.68708
							1/2 = 320.0607825	640.121565

六二四一

六二四二

面積計算書

工
区

1

ブロック

8

計測者



図号



備考

茨野

615, 618 B

測	①	②	③	④	⑤	⑥	③ × ⑤	② × ⑥
	X	X-(定数)	X _{n-1} -X _{n+1}	Y	Y-(定数)	Y _{n-1} -Y _{n+1}	+	-
17	-152512.438	^(-152500.00) - 12.438	- 32.457	-25738.878	^(-25690.00) - 48.878	- 26.570	1586.433246	330.477660
18	522.823	- 2.823 + 12.209		705.539	- 15.539	- 40.105		189.715651
23	524.647	- 24.647 + 32.457		698.793	- 8.793 + 26.570			284.745261
24	534.780	- 34.780 - 12.209		732.109	- 42.109 + 40.105		514,108781	
							2100.542027	474.460912
							1626.081115	423.641575
								2049.722697
								1626.081116
							1/2 = 813.0405575	
16	-152515.371	^(-152500.00) - 15.371	- 45.686	-25748.547	^(-25720.00) - 28.547	+ 3.296	1304.198242	50.662816
17	512.438	- 12.438 + 39.819		728.878	- 18.878	- 22.632		751.703082
14	555.190	- 55.190 + 45.686		725.915	- 5.915	- 3.296		270.232690
15	558.124	- 58.124 - 39.819		725.582	- 15.582 + 22.632		620.449658	
							1724.657900	1021.935772
								463.403056
								1366.125184
								902.722128
							1/2 = 451.361064	

六一五

六一四

西 積 計 算 書

二
区

ノ
ロ
ク

A

計
算
者

精
算
者

備
考

沢野

620-1 B

項	①	②	③	④	⑤	⑥	③ × ⑤	② × ⑥
	X	X-(定数)	X _{n-1} -X _{n+1}	Y	Y-(定数)	Y _{n-1} -Y _{n+1}	+	-
6	-152526.476	-16470	-43.185	-25774.989	-44.989	+ 1.417	1742.847965	23.337990
7	522.614	12.614	11.099	772.421	42.421	- 26.442	470.830679	333.537388
16	555.371	5.371	35.510	742.547	18.547	- 26.839	658.603970	197.862269
15	558.124	48.124	52.542	735.582	5.582	+ 19.285	293.289444	928.071346
4	567.913	57.913	7.675	767.832	37.832	+ 25.422	290.360600	2051.274280
5	565.799	55.799	41.443	771.004	41.004	+ 7.157	1579.328772	377.313443
							4113.009416	1242.246044
							2870.755402	531.401657
							1/2 = 1435.377701	2402.157051
								2870.755402
角印 1.								
9	-152489.764	-9.764	2.871	-35664.141	-4.141	+ 0.871	11.888811	8.504443
I	488.893	8.893	2.000	661.270	1.270	- 3.742	2.540.000	33.277606
1	491.764	11.764	0.871	660.399	0.399	+ 2.871	0.347529	33.774444
							11.888811	42.278888
							9.001282	9.001282
							1/2 = 4.500641	

1/15 - 1 0)

面積計算書

区

/

ノ

ル

計



者



備

考

点	①	②	③	④	⑤	⑥	③	×	⑤	②	×	⑥
	X	X-(定数)	X _{n-1} -X _{n+1}	Y	Y-(定数)	Y _{n-1} -Y _{n+1}	+		-	+		-
角切 2		(-112520.000)			(-25640.000)							
2	-152528.763	- 8.763	- 0.871	-25647.175	- 7.175	- 2.871	7.991425			25.158573		
II	531.634	- 11.634	+ 2.742	648.304	- 8.304	+ 2.000			31.073568			22.268000
3	532.505	- 12.505	- 2.871	647.175	- 11.175	+ 0.871	22.083425					10.891855
							40.074850		31.073568	25.158573		24.159855
							7.001282					7.001282
							1/2 = 4.500641					
角切 3		(-152560.000)			(-25760.000)							
4	-152567.913	- 7.913	+ 2.985	-25767.822	- 7.822	- 0.302			22.278520	2.289726		
III	568.784	- 8.784	- 2.114	770.702	- 10.702	+ 2.172	22.624028					27.862848
5	565.799	- 5.799	- 0.871	771.004	- 11.004	- 2.870	7.684484			16.643130		
							22.208512		22.278520	19.032856		27.862848
							8.829992					8.829992
							1/2 = 4.414996					

商 續 計 算 書

工 区 / ブロック 8 行 簿 簿 備考

点	①	②	③	④	⑤	⑥	③ ×	⑤	② ×	⑥
	X	X-(定数)	$X_{n-1}-X_{n+1}$	Y	Y-(定数)	$Y_{n-1}-Y_{n+1}$	+	-	+	-
角切 4		(-152520.000)			(-35770.000)					
IV	-152523.485-	3.485-	3.856	-35775.292-	5.292-	2.568	20.405952		8.949480	
7	522.614-	2.614+	2.985	772.421-	2.421-	0.303		7.226685	0.792042	
6	526.470-	6.470+	0.871	774.989-	4.989+	2.871		4.345417		18.575370
							20.405952	11.572104	9.741522	18.575370
							8.833848			8.833848
							$\frac{1}{2} =$	4.416724		

計年 月 算日	計 算 者	檢 查 者
---------------	-------------	-------------

B. No. 8

各筆面積計算書

地番	算式	隅切	地積	摘要
水路			87.46	
607(2)			434.01	
610(2)			390.99	
613			1145.14	
614-1			423.26	743.32
614-2			320.06	
615			813.04	
618(2)			451.36	
620-1 610-1(2)			1435.37	
I		450		
II		450		
III		441		
IV		441		
		1782	5500.69	計 5518.51
				全棟 5518.47
				0.04