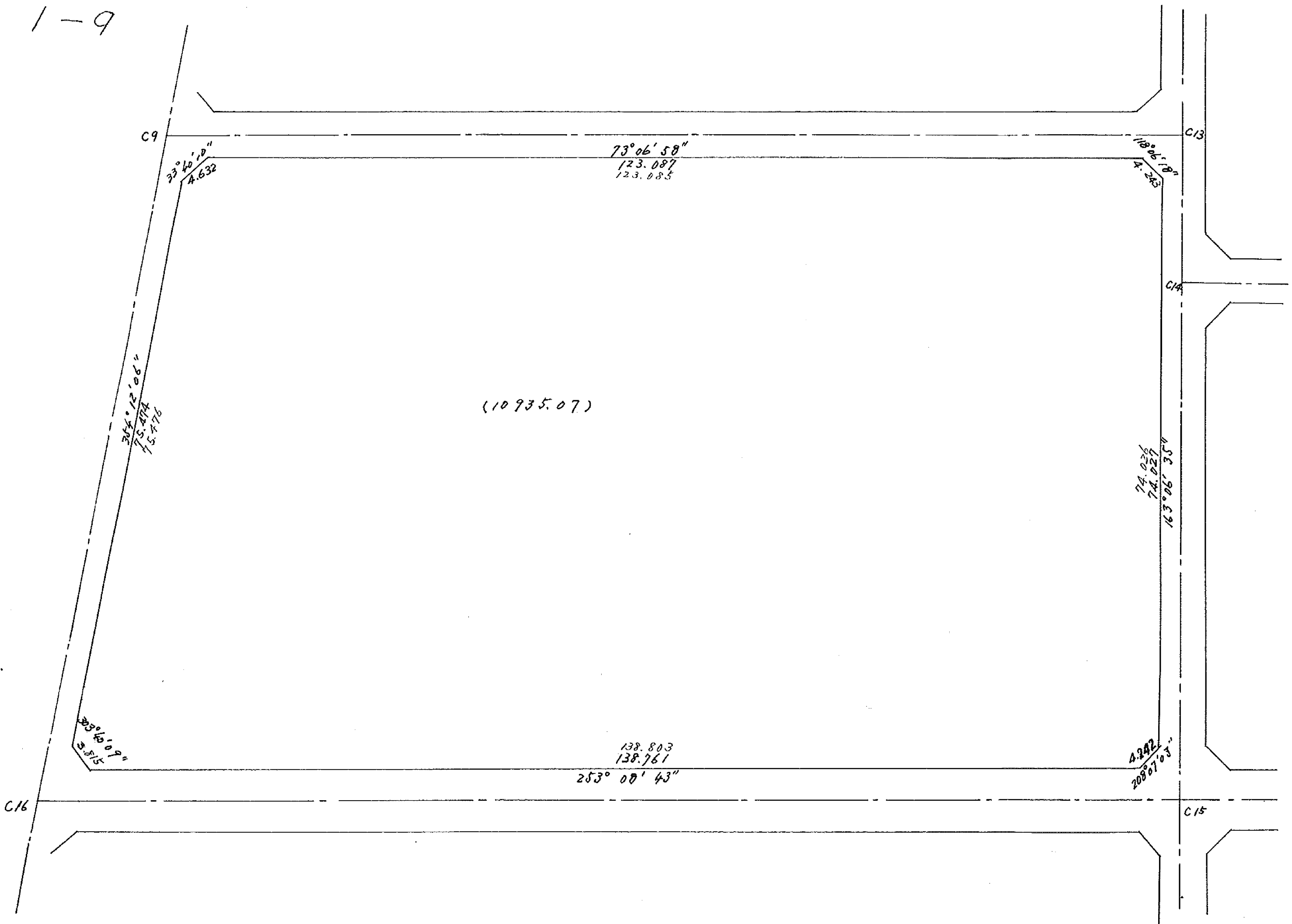


1-9



C9

33°40'18"  
4.632

73°06'58"  
123.087  
123.085

118°06'18"  
4.243

C13

C14

(10935.07)

307°12'06"  
15.474  
15.476

74.026  
74.029  
163°06'35"

303°40'09"  
3.315

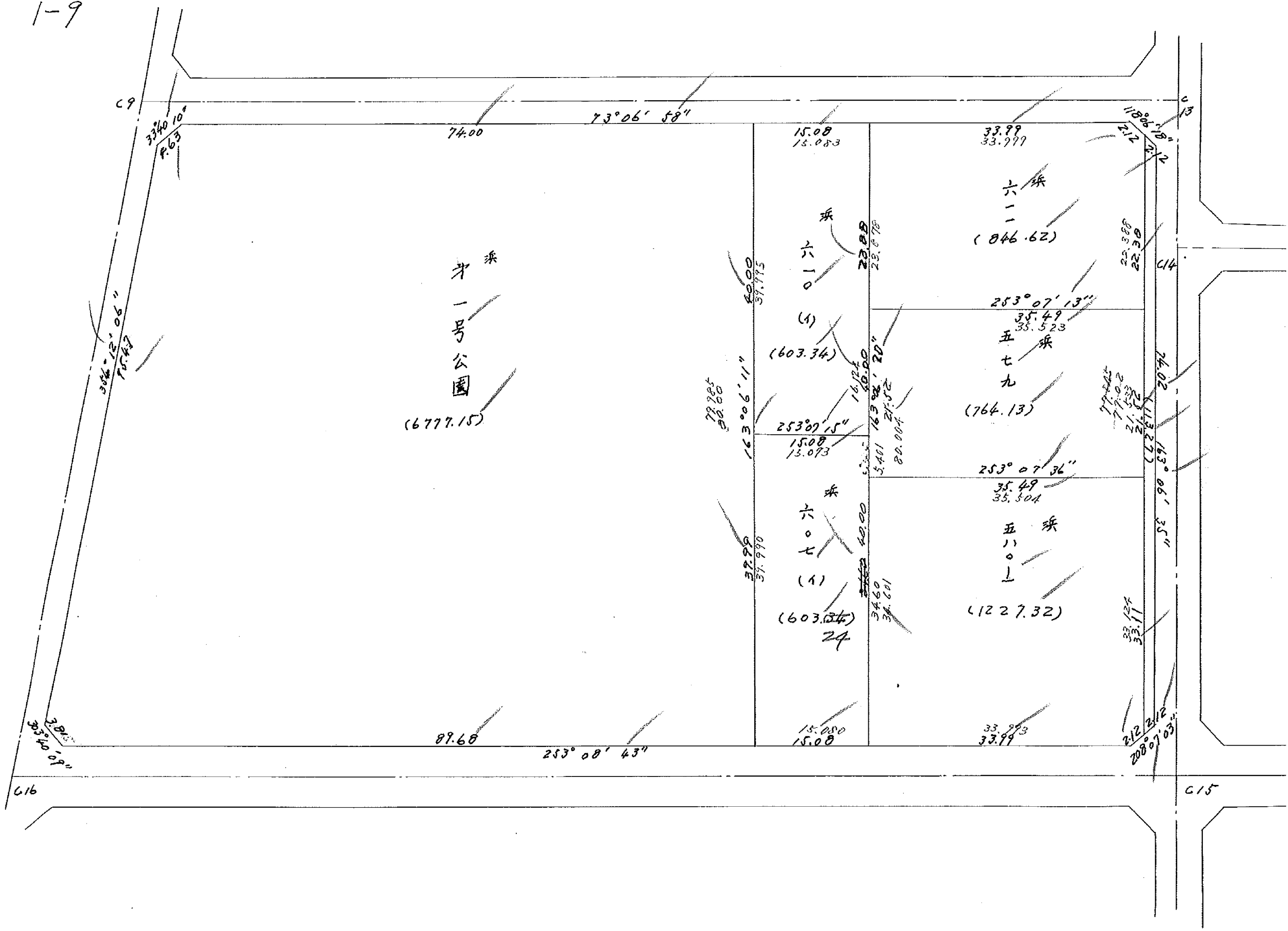
138.803  
138.761  
253°00'43"

4.242  
208°07'03"

C16

C15

1-9



C9

33.40  
P.63  
10.0

74.00

73°06'58"

15.08  
15.083

33.99  
33.999

118.06  
21.2

C13

才一公园

(6777.15)

六一〇

(603.34)

五七九

(764.13)

五八〇

(1227.32)

253°07'13"

35.49  
35.523

五七九

253°07'36"

35.49  
35.504

五八〇

21.12  
21.12  
21.12  
21.12

24.02  
113.37

163°06'35"

11.24  
11.24

212.12  
208°07'03"

C15

33.40  
10.0

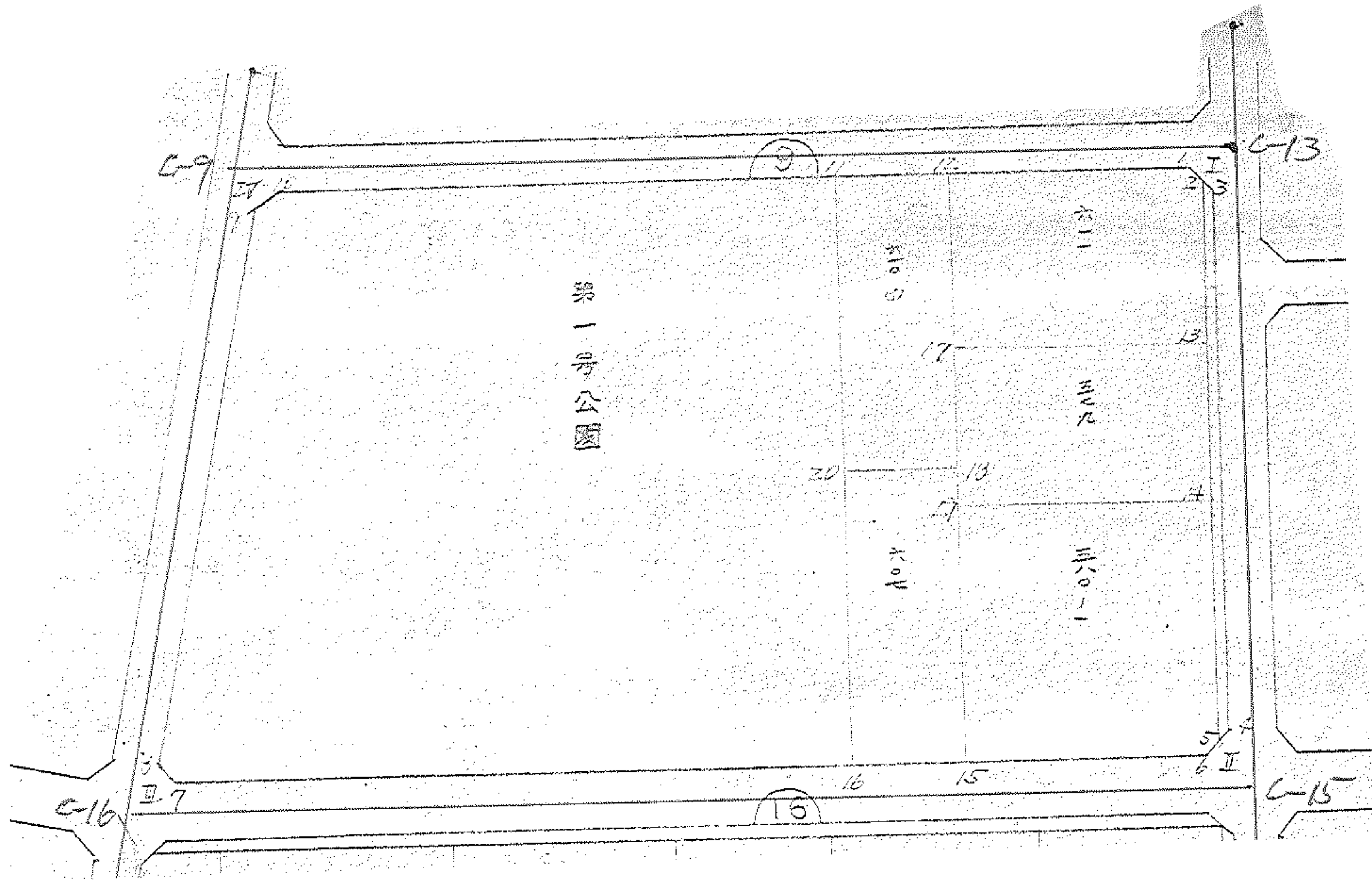
89.68

253°08'43"

15.08  
15.08

33.99  
33.99

C16



第一号公園

面積計算書

工  
区

1

ブロック

9

計  
算  
者



観  
測  
者



備  
考

点	①	②	③	④	⑤	⑥	③ × ⑤		② × ⑥	
	X	X-(定数)	X <sub>n-r</sub> -X <sub>n+1</sub>	Y	Y-(定数)	Y <sub>n-r</sub> -Y <sub>n+1</sub>	+	-	+	-
I	-152.537375	<sup>(152500)</sup> -37.375	+39.084	-35646.562	<sup>(35600)</sup> -46.562	-146.774		<sup>17</sup> 1828.829708		5485.678250
II	-613.950	-113.950	+118.548	-623.311	-23.311	+115.292				13137.523400
III	-655.923	-155.923	-39.084	-761.854	-161.854	+146.774	6325.901736			22885.442402
IV	-574.866	-74.866	-118.548	-770.085	-170.085	-115.292	20163.236580			8631.450872
							26489.138316	<sup>3</sup> 4584.301636	14117.129122	36022.765802
							21904.836680			21925.836680
							<sup>5</sup> $\frac{1}{2} = 10952.918340$			



面積計算書

工区

/

ノック

9

計測者

(18/8)

監査者

(18/8)

備考

項	①	②	③	④	⑤	⑥	③	×	⑤	②	×	⑥
	X	X-(定数)	$X_{n-1}-X_{n+1}$	Y	Y-(定数)	$Y_{n-1}-Y_{n+1}$	+		-	+		-
浪野 580-1												
19	-152 591.566	(-152500) -91.566	-43.413	-35 668.771	(-35600) -68.771	-23.912	2985.555423			2189.526192		
14	581.263	-81.263	+21.384	634.803	-34.803	-43.589			744.227352	3542.172907		
5	612.950	-112.950	+33.557	625.182	-25.182	-8.621			845.032374	973.741950		
6	614.820	-114.820	+11.726	626.182	-26.182	+33.533			307.010132		3850.259060	
15	624.676	-124.676	-23.254	658.715	-58.715	+42.589	1365.538610					5309.826164
							4350.914033	1896.269858	6705.441049	9160.085224		
							2454.644175					2454.644175
							$\frac{1}{2} = 1227.3220875$					
浪野 水路												
2	-152 539.246	(-152500) -39.246	-72.705	-35 647.561	(-35600) -47.561	+20.508	3457.922505					804.856968
3	540.245	-40.245	+71.833	645.690	-45.690	-23.378			3282.049770	936.823110		
4	611.079	-111.079	+72.705	624.183	-24.183	-20.508			1758.225015	5105.822132		
5	612.950	-112.950	-71.833	625.182	-25.182	+23.378	1808.898606					2640.545100
							5266.821111	5040.274785	3218.855742	3045.402068		
							226.546326					226.546326
							$\frac{1}{2} = 113.273163$					

面積計算書

工区

1

ブロック

9

計測者

(Stamp)

図算者

(Stamp)

備考

点	①	②	③	④	⑤	⑥	③	×	⑤	②	×	⑥
	X	X-(定数)	$X_{n-r}-X_{n+1}$	Y	Y-(定数)	$Y_{n-r}-Y_{n+1}$	+		-	+		-
没野 610-1												
11	-152 552.501	(-152500) -52.501	-42.656	-35 696.399	(-35600) -96.399	-2.806	4111.995744			147.317806		
12	548.121	-48.121	+33.897	681.966	-81.966	-26.059			2778.401502	1253.985139		
18	586.398	-86.398	+42.656	670.340	-70.340	+2.806			3000.423040			242.432788
20	596.777	-90.777	-33.897	684.772	-84.772	+26.059	2873.516484					2365.557843
							6985.512228					2607.990631
							1206.687686					1206.687686
							$\frac{1}{2} = 603.343843$					
										分筆後の座標なし		
没野 607-1												
20	-152 590.777	(-152500) -90.777	-42.650	-35 684.772	(-35600) -84.772	-2.807	3615.525800			254.811039		
18	586.398	-86.398	+33.899	670.340	-70.340	-26.057			2384.455660	2251.272686		
15	624.676	-124.676	+42.650	658.715	-58.715	+2.807			2504.194750			349.965532
16	629.048	-129.048	-33.899	673.147	-73.147	+26.057	2479.610153					2362.603736
							6075.135953		4888.650410	2506.083725	3712.567268	
							1206.485543					1206.485543
							$\frac{1}{2} = 603.2427715$					

面積計算書

工区

/

ブロック

7

計測者

(10/10)

結算者

(11/12)

備考

項	①	②	③	④	⑤	⑥	③	×	⑤	②	×	⑥
	X	X-(定数)	$X_{n-1}-X_{n+1}$	Y	Y-(定数)	$Y_{n-1}-Y_{n+1}$	+	-	+	-		
	第1号公園											
9	-152 577.850	(-152.500) - 77.850	- 78.943	- 35 769.782	(-35.600) - 169.782	+ 5.057	13403.100426					373.687450
10	573.795	- 73.995	- 25.249	767.214	- 167.214	- 73.383	4238.707686			5429.995285		
11	552.501	- 52.501	+ 55.053	676.399	- 96.399	- 94.067		5207.054147	4728.611567			
16	629.048	- 129.048	+ 102.552	673.147	- 73.147	+ 62.583		7501.371144				8076.210784
7	655.053	- 155.053	+ 23.890	758.982	- 158.982	+ 29.010		3798.079980				13801.267530
8	652.938	- 152.938	- 77.203	762.157	- 162.157	+ 10.800	12519.006871					1651.730400
							30160.814983	1606.505271	10368.586652	23922.876364		
							12554.309712					12554.309712
							$\frac{1}{2} =$	6777.154856				



面積計算書

工区

/

ブロック

9

区画



区画



備考

点	①	②	③	④	⑤	⑥	③	×	⑤	②	×	⑥
	X	X-(定数)	$X_{n-r}-X_{n+1}$	Y	Y-(定数)	$Y_{n-r}-Y_{n+1}$	+		-	+		-
角切												
4	-152 611.079	(-152610) - 1.079	- 0.870	-35 624.183	(-35620) - 4.183	- 2.871	3.639210			3.097809		
II	613.950	- 3.950	+ 3.741	623.311	- 3.311	+ 1.999			12.386451			7.896050
6	614.820	- 4.820	- 2.871	626.182	- 6.182	+ 0.872	17.748522					4.203040
							21.387732		12.386451	3.097809		12.099090
							7.001281					9.001281
							$\frac{1}{2} = 4.5006405$					
角切												
7	-152 655.053	(-152650) - 5.053	+ 2.985	-35 758.982	(-35700) - 58.982	- 0.303			176.061270	1.531059		
II	655.923	- 5.923	- 2.115	761.854	- 61.854	+ 3.175	130.821210					18.805525
8	652.938	- 2.938	- 0.870	762.157	- 62.157	- 2.872	54.076590			8.407936		
							184.897800		176.061270	9.768995		18.805525
							8.836530					8.836530
							$\frac{1}{2} = 4.418265$					

面積計算書

工区

1

ブロック

9

測量者



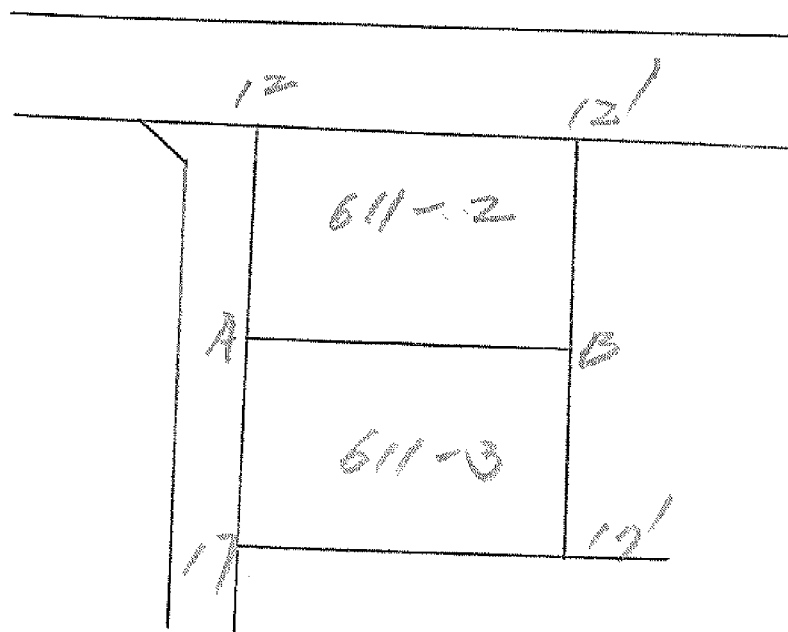
監査者

460

備考

点	①	②	③	④	⑤	⑥	③	×	⑤	②	×	⑥
	X	X-(定数)	X <sub>n-1</sub> -X <sub>n+1</sub>	Y	Y-(定数)	Y <sub>n-1</sub> -Y <sub>n+1</sub>	+		-	+		-
角切												
IV	-152 574.866	(-152570) - 4.866	- 3.855	-35 770.085	(-35700) - 70.085	- 2.568	270.177675			12.495888		
10	573.795	- 3.795	+ 2.784	767.214	- 67.214	- 0.303			200.566576	1.210485		
9	577.850	- 7.850	+ 0.871	769.782	- 69.782	+ 2.871			60.780122			22.537350
							270.177675		261.346698	13.706373		22.537350
							8.830977					8.830977
							$\frac{1}{2} = 4.4154885$					
角切												
1	-152 578.246	(-152500) - 38.246	- 2.870	-35 649.433	(-35640) - 9.433	+ 0.872	27.072710					33.350512
I	537.375	- 37.375	+ 1.999	646.562	- 6.562	- 3.743			13.117428	139.894625		
3	540.245	- 40.245	+ 0.871	645.690	- 5.690	+ 2.871			4.955990			115.543395
							27.072710		18.073428	139.894625		148.893907
							8.999282					8.999282
							$\frac{1}{2} = 4.499641$					





# 面積計算書

工  
区

ブ  
ロ  
ック

計  
算  
者

精  
算  
者

備  
考

611-3

点	①	②	③	④	⑤	⑥	③ × ⑤		② × ⑥	
	X	X - (定数)	X <sub>n-1</sub> - X <sub>n+1</sub>	Y	Y - (定数)	Y <sub>n-1</sub> - Y <sub>n+1</sub>	+	-	+	-
A	- 559.545		- 10.744	- 678.496		- 14.058	479.137024		134.183610	
B	- 554.226		+ 6.106	- 660.968		- 20.998		66.970608	88.737548	
17'	- 565.651		+ 16.744	- 657.498		+ 14.058		125.546512		220.021758
17	- 570.990		- 6.106	- 675.026		+ 20.998	152.808756			440.328060
							629.945780	192.517120	222.921158	660.349818
							437.428660		437.428660	
								218.714330		