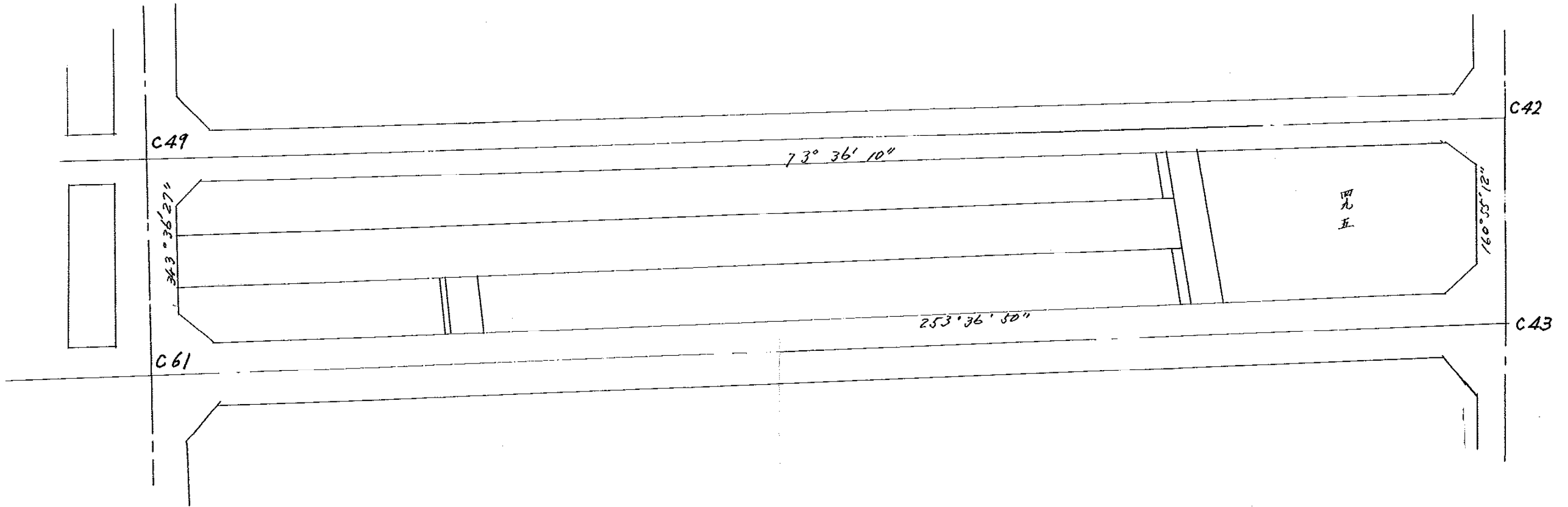
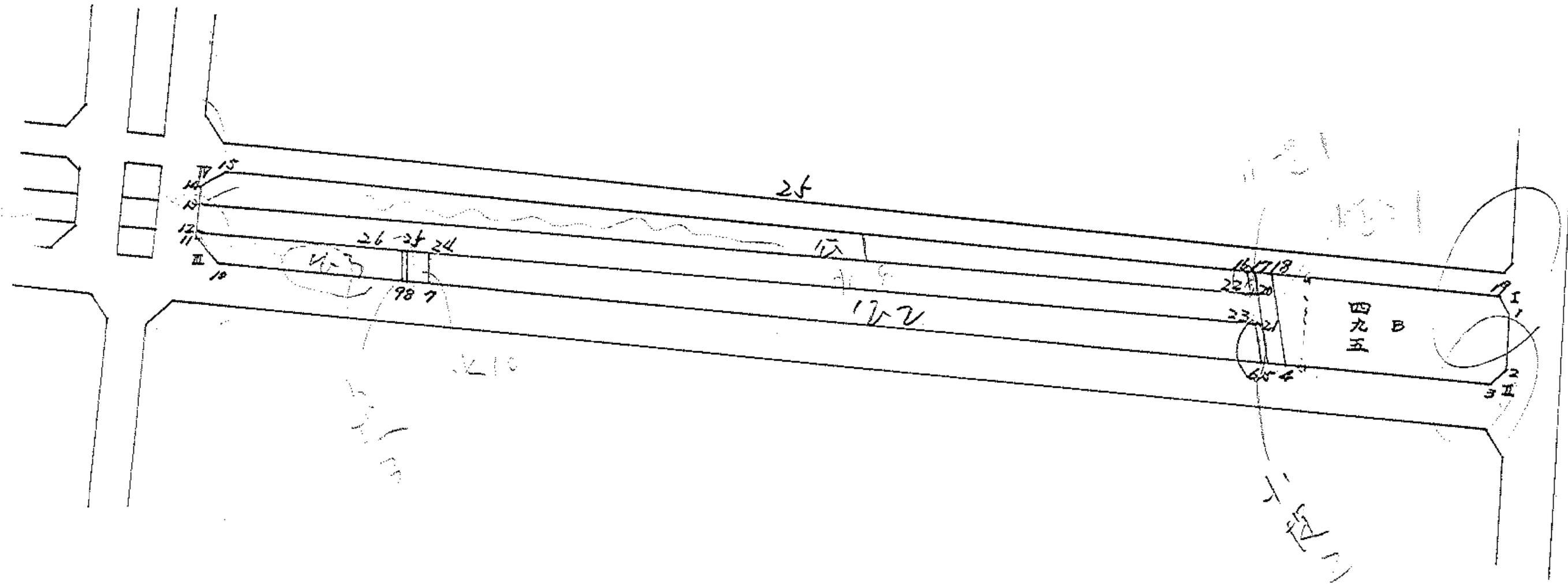


1-25





27 2

1-1
1-2
1-3
1-4
1-5
1-6
1-7
1-8
1-9
1-10
1-11
1-12
1-13
1-14
1-15
1-16
1-17
1-18
1-19
1-20
1-21
1-22
1-23
1-24
1-25
1-26
1-27
1-28
1-29
1-30
1-31
1-32
1-33
1-34
1-35
1-36
1-37
1-38
1-39
1-40
1-41
1-42
1-43
1-44
1-45
1-46
1-47
1-48
1-49
1-50

面積計算書

工区

/

ブロック

25

計算者



精算者



備考

点	①	②	③	④	⑤	⑥	③ ×	⑤	② ×	④
	X	X - (定数)	$X_{n-1} - X_{n+1}$	Y	Y - (定数)	$Y_{n-1} - Y_{n+1}$	+	-	+	-
I	-152. 714.058	(-152.710) - 4.058	- 39.791	224.362	(-35.220) - 4.362	- 181.467	173.568340 172.135864		736.393086	
II	726.409	16.409	+ 64.628	220.091	0.091	+ 173.523		5.881148		2847338907
III	778.686	68.686	+ 39.791	397.885	177.885	+ 181.467		7078.222035		12464242362
IV	760.200	56.200	- 64.628	401.558	181.558	- 173.523	11733.730424 11907.298766 11905.866290		9751.992600	
							4823.195583 4821.763197 2411.597715	7084.103183	10488385686	15311.581269
							1/2 = 2410.881535			4823.195583

面積計算書

I
区

ブロック

25

計算者

精算者

備考

点	①	②	③	④	⑤	⑥	③ × ⑤		② × ⑥		
	X	X-(定数)	$X_{n-1}-X_{n+1}$	Y	Y-(定数)	$Y_{n-1}-Y_{n+1}$	+	-	+	-	
	495 B										
1	-152 715.949	- 5.948	+ 8.948	-35 223.708	- 3.708	- 5.210			33.179184	30.989080	
2	723.571	- 13.571	+ 11.504	221.071	- 1.071	- 0.739			12.106584	10.028989	
3	727.252	- 17.252	+ 11.863	222.969	- 2.969	+ 29.721			35.221247	512.746672	
4	725.434	- 25.434	- 3.481	250.792	- 20.792	+ 34.403	107.186952			875.025902	
18	723.771	- 13.771	- 20.811	257.372	- 37.372	- 24.511	777.748692			337.540981	
19	714.623	- 4.623	- 7.823	226.281	- 6.281	- 33.664	49.136263			155.628672	
							924.071907	80.507015	534.187702	1387.752594	
							853.564872			853.564872	
							$\frac{1}{2}$ 426.782446	分筆後の座標なし			
	水路が1号線										
18	-152 723.771	- 0.771	+ 10.938	-35 257.372	- 7.372	- 9.041			80.634936	6.970611	
4	725.434	- 12.434	+ 12.387	250.792	- 0.792	- 4.118			9.810504	51.203212	
5	726.158	- 12.158	- 10.938	253.254	- 3.254	+ 9.041	35.592252			118.961478	
17	724.496	- 1.496	- 12.387	259.833	- 9.833	+ 4.118	121.801371			6.160528	
							157.393623	90.445440	58.173823	125.122006	
							66.948183		66.	66.948183	
							$\frac{1}{2}$ = 33.4740915				

面積計算書

工
区

ブ
ロ
ック

25

計
算
者

概
算
者

備
考

点	①	②	③	④	⑤	⑥	③ × ⑤		② × ⑥		
	X	X-(定数)	$X_{n-1} - X_{n+1}$	Y	Y-(定数)	$Y_{n-1} - Y_{n+1}$	+	-	+	-	
	水路カノ号線										
13	-152 770.526	- 50.526	- 45.824	-35 400.285	- 145.285	- 141.605	6657.539840		7154.734230		
20	728.539	8.539	- 38.411	257.552	2.552	- 144.750	98.024872		1236.020250		
21	732.115	12.115	+ 45.824	255.535	0.535	+ 141.605		24.515840		1715.504575	
12	774.363	54.363	+ 38.411	399.157	104.157	+ 144.750		5597.214527		7869.044250	
							6755.564712	5561.750367	8390.724470	9584.588825	
							1193.834345			1192.834345	
							$\frac{1}{2} = 576.7171725$				
	水路カノ号線										
24	-152 765.283	- 0.283	+ 3.621	-35 368.290	- 1.290	- 3.671		0.671070	1.018.893		
7	769.609	4.609	+ 5.031	367.017	0.017	+ 1.125		0.085527		5.185125	
8	770.314	5.314	- 3.621	369.415	2.415	+ 3.671	744 715 8.739199			19.507674	
25	765.988	0.988	- 5.031	370.688	3.688	- 1.125	18.554328		1.111500		
							299043 27.313327	4.756617	2.150393	24.692819	
							542 026 22.556716			22.542 026	
							$\frac{1}{2} = 11.271213$				

面積計算書

工
区

ブ
ロ
ック

25

計
算
者

精
算
者

備
考

公共用地 1, 2

点	①	②	③	④	⑤	⑥	③ × ⑤		② × ⑥	
	X	X-(定数)	X _{n-1} -X _{n+1}	Y	Y-(定数)	Y _{n-1} -Y _{n+1}	+	-	+	-
13	⁻¹⁵² 770.526	^{-152.724} 46.526	+ 39.290	⁻³⁵ 400.285	^{-35.258} 142.285	+ 142.456			5590.377650	6627.907856
14	768.119	44.119	- 4.891	400.993	142.993	- 0.646	699.378763		28.500874	28.500874
15	765.635	41.635	- 43.334	399.639	141.639	- 140.175	6137.784426		5836.186125	
16	724.785	0.785	- 36.806	260.818	2.818	- 141.102	103.719308		110.765070	
22	728.829	4.829	+ 45.741	258.537	0.537	+ 139.467		24.562917		673.486143
							6940.882497	5614.940567	5975.462069	7301.393999
							1375.941930	0		1375.941930
							$\frac{1}{2} = 662.970965$			
公共用地 2										
6	⁻¹⁵² 736.447	^{-152.732} 4.447	+ 37.205	⁻³⁵ 254.238	^{-35.254} 0.238	+ 110.498			8.854790	491.384606
7	769.609	37.609	+ 28.836	367.017	113.017	+ 114.052			3258.958212	4289.381668
24	765.283	33.283	- 37.205	368.290	114.290	- 110.498	4252.159450		3677.704934	
23	732.404	0.404	- 28.836	256.519	2.519	- 114.052	72.637884		46.077008	
							4324.997334	3267.813002	3723.781942	4780.766274
							1056.984332			1056.984332
							$\frac{1}{2} = 528.492166$			

面積計算書

工
区

/

ブ
ロ
ック

25

計
算
者

精
算
者

備
考

公共用地
小堤

点	①	②	③	④	⑤	⑥	③ × ⑤		② × ⑥	
	X	X-(定数)	X _{n-1} -X _{n+1}	Y	Y-(定数)	Y _{n-1} -Y _{n+1}	+	-	+	-
		公共用地 3								
9	-152 770.597	-152.766 4.597	+ 11.570	-35 370.374	-35.370 0.374	+ 23.360				
10	777.840	11.840	+ 5.211	395.007	25.007	+ 28.358				
11	775.808	9.808	- 3.477	398.732	28.732	+ 4.150	99.901164			40.703200
12	774.363	8.363	- 9.538	388.157	29.157	- 27.085	278.099466			226.511855
26	766.270	0.270	- 3.766	371.647	1.647	- 28.783	6.202602			7.771410
							384.203232	134.638657	234.283265	483.847840
							249.564575			249.564575
							$\frac{1}{2} = 124.7822875$			
		小堤 1								
16	-152 724.785	-152.724 0.785	- 4.333	-35 260.818	-35.257 3.818	+ 1.296	16.543394			1.017360
17	724.496	0.496	+ 3.754	259.833	2.833	- 3.266		10.635082	1.619936	
20	728.539	4.539	+ 4.333	257.552	0.552	- 1.296		2.391816	5.882540	5.882544
22	728.829	4.829	- 3.754	258.537	1.537	+ 3.266	5.769898		15.991574	15.771514
							22.213092	13.026898	7.502480	16.788874
							9.286394			9.286394
							$\frac{1}{2} = 4.643$			

面積計算書

工区 /

ブロック 25

計算者

精算者

備考

小堤

点	①	②	③	④	⑤	⑥	③ × ⑤		② × ⑥	
	X	X-(定数)	X _{n-1} -X _{n+1}	Y	Y-(定数)	Y _{n-1} -Y _{n+1}	+	-	+	-
		小堤 2								
5	-152 736.158	-152.732 4.158	+ 4.332	-35 253.254	-35.253 0.254	- 1.297		1.100328	5.392926	
6	736.447	4.447	- 3.754	254.238	1.238	+ 3.265	4.647452		14.519455	
23	732.404	0.404	- 4.332	256.519	3.519	+ 1.297	15.244308		0.523988	
21	732.115	0.115	+ 3.754	255.535	2.535	- 3.265		9.516390	0.375475	
							19.891760	10.616718	5.768401	15.043443
							9.275042			9.275042
							√2 = 4.637521			
		小堤 3								
8	-152 770.314	-152.765 5.314	+ 4.609	-35 369.415	-35.369 0.415	- 0.314		1.912735	1.668596	
9	770.597	5.597	- 4.044	370.374	1.374	+ 2.232	5.556456		12.492504	
26	766.270	1.270	- 4.609	371.647	2.647	+ 0.314	12.200023		0.398780	
25	765.988	0.988	+ 4.044	370.688	1.688	- 2.232		6.826272	2.205216	
							17.756479	8.739007	3.873812	12.891284
							9.017472			9.017472
							√2 = 4.508736			

面積計算書

工区 /

ブロック

Z5

計算者

精算者

備考

角切

点	①	②	③	④	⑤	⑥	③ × ⑤		② × ⑥	
	X	X-(定数)	X _{n-1} -X _{n+1}	Y	Y-(定数)	Y _{n-1} -Y _{n+1}	+	-	+	-
		角切	Ⅳ							
10	-152 777.840	-152.775 2.840	+ 2.878	-35 395.007	-35.395 0.007	- 0.847		0.020146	2.405480	
Ⅳ	778.686	3.686	- 2.032	397.885	2.885	+ 3.725	5.862320			13.730350
11	775.808	0.808	- 0.846	398.732	3.732	- 2.878	3.157272		2.325424	
							9.019592	0.020146	4.730904	13.730350
							8.999446			8.999446
							1/2 = 4.499723			
		角切	Ⅳ							
14	-152 768.119	-152.765 3.119	+ 0.565	-35 400.993	-35.399 1.993	+ 1.919		1.126045		5.985361
Ⅳ	766.200	1.200	- 2.484	401.558	2.558	- 1.354	6.354072		1.624800	
15	765.635	0.635	+ 1.919	399.639	0.639	- 0.565		1.726241	0.358775	
							6.354072	2.352286	1.983575	5.985361
							4.001786			4.001786
							1/2 = 2.000893			

面積計算書

工区 /

ブロック

25

計算者

精算者

備考

角切

点	①	②	③	④	⑤	⑥	③ × ⑤		② × ⑥	
	X	X-(定数)	X _{n-1} -X _{n+1}	Y	Y-(定数)	Y _{n-1} -Y _{n+1}	+	-	+	-
		角切 I								
I	-152 714.058	-152.714 0.058	+ 1.325	-35 224.362	-35.223 1.362	- 2.573		1.804650	0.149234	
1	715.948	1.948	+ 0.565	223.708	0.708	+ 1.919		0.400020		3.738212
19	714.623	0.623	- 1.890	226.281	3.281	+ 0.654	6.201090			0.407442
							6.201090	2.204670	0.149234	4.145654
							3.996420			3.996420
							1/2 = 1.998210			
		角切 II								
2	-152 723.571	-152.723 0.571	- 0.846	-35 221.071	-35.220 1.071	- 2.878	0.906066		1.643338	
II	726.406	3.406	+ 3.681	220.091	0.091	+ 1.898		0.334971		6.464588
3	727.252	4.252	- 2.835	222.969	2.969	+ 0.980	8.417115			4.166960
							9.323181	0.334971	1.643338	10.631548
							8.988210			8.988210
							1/2 = 4.494105			