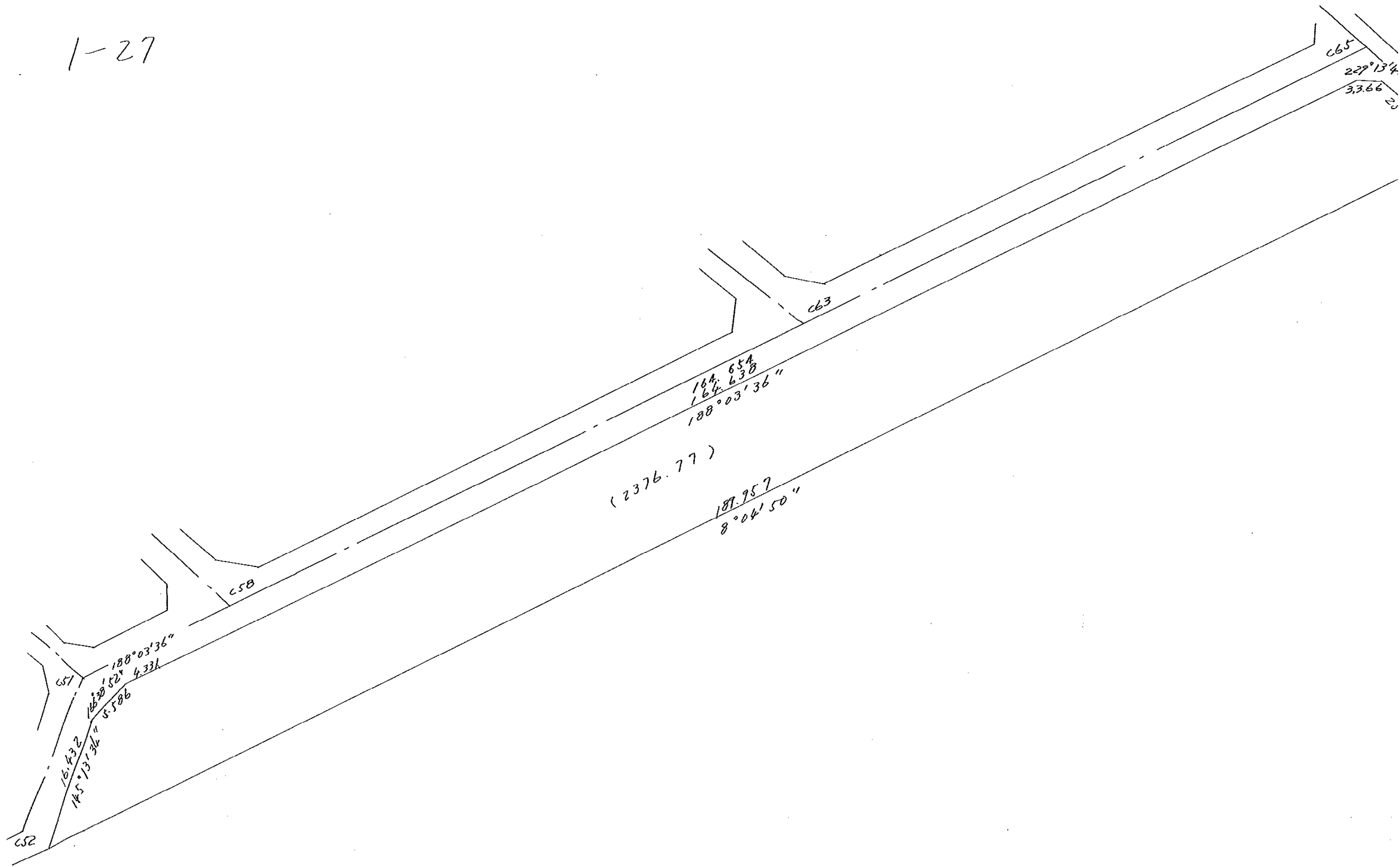
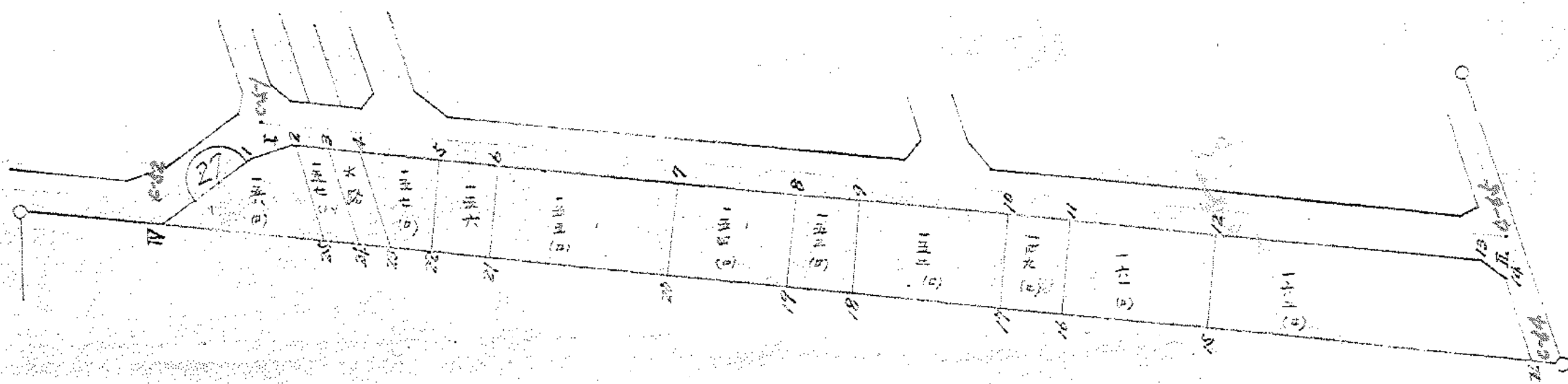


1-27



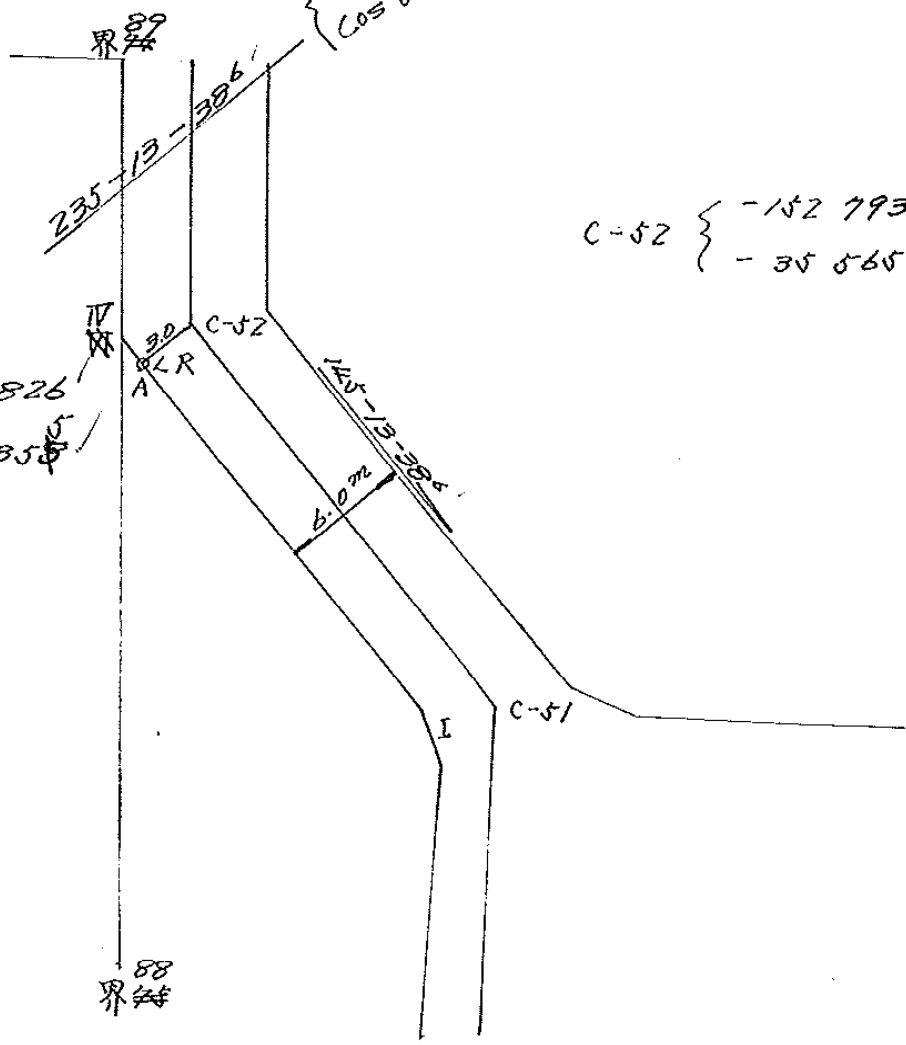






277"ロック

$$\left. \begin{array}{l} \sin 0.821422^\circ \\ \cos 0.570321^\circ \end{array} \right\}$$



$$C-52 \left\{ \begin{array}{l} -152\ 793\ 115 \\ -35\ 565\ 891 \end{array} \right.$$

求点A {

$$\left. \begin{array}{l} -152\ 749\ 826 \\ -35\ 568\ 358 \end{array} \right\}$$

88  
界綫

94  
A  
R  
C-52

145-13-384  
6.072

I  
C-51

面積計算書

工  
区

/

ブロック

27

計測者

監  
査

短冊者

587  
D

備考

項	①	②	③	④	⑤	⑥	③ × ⑤		② × ⑥	
	X	X-(定数)	$X_{n-1}-X_{n+1}$	Y	Y-(定数)	$Y_{n-1}-Y_{n+1}$	+	-	+	-
I	-152 809 885	-109.885	+183.924	-35 557 899	-57.899	+12.702		10649.05676		1395.759270
Ⅱ	-152 977 847	-277.847	+172.109	-35 581 684	-81.684	+37.785		14058.551556		10498.448895
Ⅲ	-152 981 994	-281.994	-183.924	-35 595 684	-95.684	-12.702	17598.584016		3581.887788	
Ⅳ	-152 793 923	-93.923	-172.109	-35 568 982	-68.982	-37.785	11872.423038		3548.880555	
							29471.007054	24707.567232	7130.768343	11874.208165
							4763.439822			4763.439822
									$\frac{1}{2} = 2,381.719911$	

面積計算書

工区

1

ブロック

27

計算者

藤原

精算者

野田

備考

158 (P)

157 (V)

一五八(四)

一五九(三)

点	①	②	③	④	⑤	⑥	③ × ⑤		② × ④	
	X	X-(定数)	$X_{n-1}-X_{n+1}$	Y	Y-(定数)	$Y_{n-1}-Y_{n+1}$	+	-	+	-
IV	-152793.923	-93.923	-9.005	-35568.982	-68.982	-12.567	621.182910			1180.330341
1	-152807.420	-107.420	+18.932	-35559.610	-59.610	-10.662		1128.536520	1145.312040	
2	-152812.855	-112.855	+9.005	-35558.320	-58.320	+12.567		525.171600		1418.248785
25	-152816.425	-116.425	-18.932	-35572.177	-72.177	+10.662	1366.454964			1241.323350
							1987.637874	1653.708120	2325.642581	2659.572135
							333.929754			333.929754
								$\frac{1}{2} = 166.964877$		
2	-152812.855	-12.855	+0.718	-35558.320	-58.320	-13.250		41.873760	170.328750	
3	-152817.143	-17.143	+8.453	-35558.927	-58.927	+14.550		498.109931		249.430650
24	-152821.308	-21.308	-0.718	-35572.870	-72.870	+13.250	52.320660			282.331000
25	-152816.425	-16.425	-8.453	-35572.177	-72.177	-14.550	610.112181			238.985759
							662.452841			154.527225
							1222.416532	539.983691	1345.835975	531.761650
							122.449150			122.449150
							662.452841			
								$\frac{1}{2} = 61.224575$		

面積計算書

工区

/

ブロック

27

計算者



精算者



備考

水路

157 (D)

点	①	②	③	④	⑤	⑥	③ × ⑤		② × ③	
	X	X-(定数)	$X_{n-1}-X_{n+1}$	Y	Y-(定数)	$Y_{n-1}-Y_{n+1}$	+	-	+	-
	水路									
3	-152 817.143	- 17.143	+ 0.190	-35 558.927	-58.927	- 13.326		11.196130	228.447618	
4	-152 821.498	- 21.498	+ 8.465	-35 559.544	-59.544	+ 14.554		504.039960		312.881892
23	-152 825.608	- 25.608	- 0.190	-35 573.481	-73.481	+ 13.326	13.961390			341.252208
24	-152 821.308	- 21.308	- 8.465	-35 572.870	-72.870	- 14.554	616.844550			310.116632
							630.805940	515.236090	538.564250	654.134100
							115.569850			115.569850
								$\frac{1}{2} = 57.784925$		
	157 (D)									
4	-152 821.498	- 21.498	+ 7.244	-35 559.544	-59.544	- 12.330		431.336736	265.070340	
5	-152 832.852	- 32.852	+ 9.502	-35 561.151	- 61.151	+ 14.702		581.056802		482.990104
22	-152 831.000	- 31.000	- 7.244	-35 574.246	-74.246	+ 12.330	537.838024			382.230000
23	-152 825.608	- 25.608	- 9.502	-35 573.481	-73.481	- 14.702	698.216462			376.488816
							1236.054486	1012.399538	641.559156	865.220104
							223.660948			223.660948
								$\frac{1}{2} = 111.830474$		

面積計算書

工  
区

/

ブ  
ロ  
ック

27

計  
算  
者

藤原

精  
算  
者

野中

備  
考

156

155 (D)

点	①	②	③	④	⑤	⑥	③ × ⑤		② × ④	
	X	X-(定数)	$X_{n-1}-X_{n+1}$	Y	Y-(定数)	$Y_{n-1}-Y_{n+1}$	+	-	+	-
	156									
5	-152 832.852	-32.852	+9.967	-35 561.151	-61.151	-11.945	609.492017	609.492017	392.417140	
6	-152 840.967	-40.967	+6.273	-35 562.301	-62.301	+14.249	392.814173	390.814173		583.738783
21	-152 839.125	-39.125	-9.967	-35 575.400	-75.400	+11.945	751.511800			467.348125
22	-152 831.000	-31.000	-6.273	-35 574.246	-74.246	-14.249	465.745158		441.719000	
							1217.256958	1000.306190	832.136140	1051.086908
							216.950768			216.950768
								$\frac{1}{2} = 108.475384$		
	155 (D)									
6	-152 840.967	-40.967	+26.111	-35 562.301	-62.301	-9.663		1626.741411	395.864121	395.864121
7	-152 865.236	-65.236	+22.458	-35 565.737	-65.737	+16.549		1476.321546		1079.590564
20	-152 836.425	-63.425	-26.111	-35 578.850	-78.850	+9.663	2258.852350			612.815775
21	-152 839.125	-39.125	-22.458	-35 575.400	-75.400	-16.549	1693.333200		647.479625	647.479625
							3752.185550	3103.062957	1043.343746	1443.343746
							649.122593			649.122593
								$\frac{1}{2} = 324.5612965$		



面積計算書

工区

/

ブロック

27

計算者



精算者



備考

154 (P)

153 (P)

点	①	②	③	④	⑤	⑥	③ × ⑤	② × ⑥
	X	X-(定数)	$X_{n-1} - X_{n+1}$	Y	Y-(定数)	$Y_{n-1} - Y_{n+1}$	+ -	+ -
	154 (P)							
7	-152 865.236	-65.236	+18.215	-35 565.737	-65.737	-10.790	1197.399455	703.896440
8	-152 881.640	-81.640	+14.615	-35 568.060	-68.060	+15.445	994.696900	1260.929800
19	-152 879.851	-79.851	-18.215	-35 581.182	-81.182	+10.790	1478.730130	861.592290
20	-152 863.425	-63.425	-14.615	-35 578.850	-78.850	-15.445	1152.392750	979.599125
							2631.122880	2192.096355
							1683.495565	2122.522090
							439.026525	439.026525
							$\frac{1}{2} = 219.5132625$	
	153 (P)							
8	-152 881.640	-81.640	+10.745	-35 568.060	-68.060	-11.853	731.304700	967.678920
9	-152 890.596	-90.596	+7.177	-35 569.329	-69.329	+14.395	497.574235	1304.129420
18	-152 888.817	-88.817	-10.745	-35 582.455	-82.455	+11.853	885.978975	1052.747901
19	-152 879.851	-79.851	-7.177	-35 581.182	-81.182	-14.395	582.643214	1149.455145
							1468.622189	1228.878933
							2117.134065	2356.877321
							239.743256	239.743256
							$\frac{1}{2} = 119.871628$	

面積計算書

工区

1

ブロック

27

計算者

藤原

精算者

野中

備考

152 (D)

149 (D)

点	①	②	③	④	⑤	⑥	③ × ⑤		② × ③	
	X	X-(定数)	$X_{n-1}-X_{n+1}$	Y	Y-(定数)	$Y_{n-1}-Y_{n+1}$	+	-	+	-
	152 (D)									
9	-152 890.596	-90.596	+22.309	-35 569.329	-69.329	-10.219		1526.660661	925.80524	
10	-152 911.126	-111.126	+18.742	-35 572.236	-72.236	+16.039		1353.847112		1782.349914
17	-152 909.338	-109.338	-22.309	-35 585.368	-85.368	+10.219	1904.474712			1117.325022
18	-152 888.817	-88.817	-18.742	-35 582.455	-82.455	-16.039	1545.371610		1424.535863	
								3449.846322	2900.507773	2350.336387
									2899.874936	
								549.338549		549.338549
									$Y_2 = 274.6692745$	
	149 (D)									
10	-152 911.126	-11.126	+10.396	-35 572.236	-72.236	-11.913		750.965456	132.544038	
11	-152 919.734	-19.734	+6.817	-35 573.455	-73.455	+14.354		500.742735		283.261836
16	-152 917.943	-17.943	-10.396	-35 586.590	-86.590	+11.913	900.189640			213.754959
17	-152 909.338	-9.338	-6.817	-35 585.368	-85.368	-14.354	581.953656		134.037652	
								1482.143296	1251.708191	266.581690
									497.016795	
								230.435105		230.435105
									$Y_2 = 115.2175525$	

面積計算書

工  
区

/

ブ  
ロ  
ック

27

計  
算  
者



精  
算  
者



備  
考

161 (D)

162 (D)

点	①	②	③	④	⑤	⑥	③ × ⑤	② × ⑥		
	X	X-(定数)	$X_{n-1} - X_{n+1}$	Y	Y-(定数)	$Y_{n-1} - Y_{n+1}$	+	-	+	-
	161 (D)									
11	-152 919.734'	-19.734'	+ 21.129'	-35 573.455'	-73.455'	-10.397'		155 2030695'	205 174 398'	
12	-152 939.072'	-39.072'	+ 17.542'	-35 576.193'	-76.193'	+ 15.880'		1336.577606'		620.463360'
15	-152 937.276'	-37.276'	- 21.129'	-35 589.335'	-89.335'	+ 10.397'	1887.559215'			387.558572'
16	-152 917.943'	-17.943'	-17.542'	-35 586.590'	-86.590'	-15.880'	1518.961780'		284.934840'	
							3406.520995'	2888.608301'	490.109238'	1008.021932'
							517.912694'			517.912694'
									$\frac{1}{2} = 258.956347'$	
	162 (D)									
12	-152 939.072'	-39.072'	+ 38.590 <sup>B</sup>	-35 576.193'	-76.193'	- 7.931'		2940.287870'	309.880032'	
13	-152 975.866'	-75.866'	+ 39.343'	-35 581.404'	-81.404'	+ 7.409'		3202.677572'		562.091194'
14	-152 978.415'	-78.415'	+ 6.128'	-35 583.602'	-83.602'	+ 14.280'		512.313056'		1119.766200'
III	-152 981.994'	-81.994'	-41.139'	-35 595.684'	-95.684'	+ 5.733'	3936.344076'			490.071602'
15	-152 937.276'	-37.276'	-42.922'	-35 589.335'	-89.335'	- 19.491'	3834.436870'		726.546516'	
							7770.780946'	6655.278498'	1036.426548'	2151.928996'
							1115.502448'			1115.502448'
									$\frac{1}{2} = 557.751224'$	

面積計算書

I  
区

/

ブロック

27

計算者

藤原

精算者

藤原

備考

角切

I  
II

点	①	②	③	④	⑤	⑥	③ × ⑤		② × ⑥	
	X	X-(定数)	$X_{n-1}-X_{n+1}$	Y	Y-(定数)	$Y_{n-1}-Y_{n+1}$	+	-	+	-
角切 I										
1	-152 807 420	- 7.420	- 2.970	-35 559 610	- 59.610	- 0.421	177.641 700			3.123 820
I	-152 809 885	- 9.885	+ 5.435	-35 557 899	- 57.899	- 1.290		314.681 065		12.751 650
2	-152 812 855	- 12.855	- 2.465	-35 558 320	- 58.320	+ 1.711	143.758 800			21.994 905
							520.800 500	314.681 065	15.875 470	21.994 905
							6.119 435			6.119 435
								$\frac{1}{2} = 3.059 7175$		
II										
13	-152 975 866	- 75.866	- 0.568	-35 581 404	- 81.404	- 1.918	46.237 472			145.510 988
II	-152 977 847	- 77.847	+ 2.549	-35 581 684	- 81.684	+ 2.198		208.212 516		171.107 706
14	-152 978 415	- 78.415	- 1.981	-35 583 602	- 83.602	- 0.280	165.615 562			21.956 200
							211.853 034	208.212 516	167.467 188	171.107 706
							5.640 518			3.640 518
								$\frac{1}{2} = 1.820 259$		

