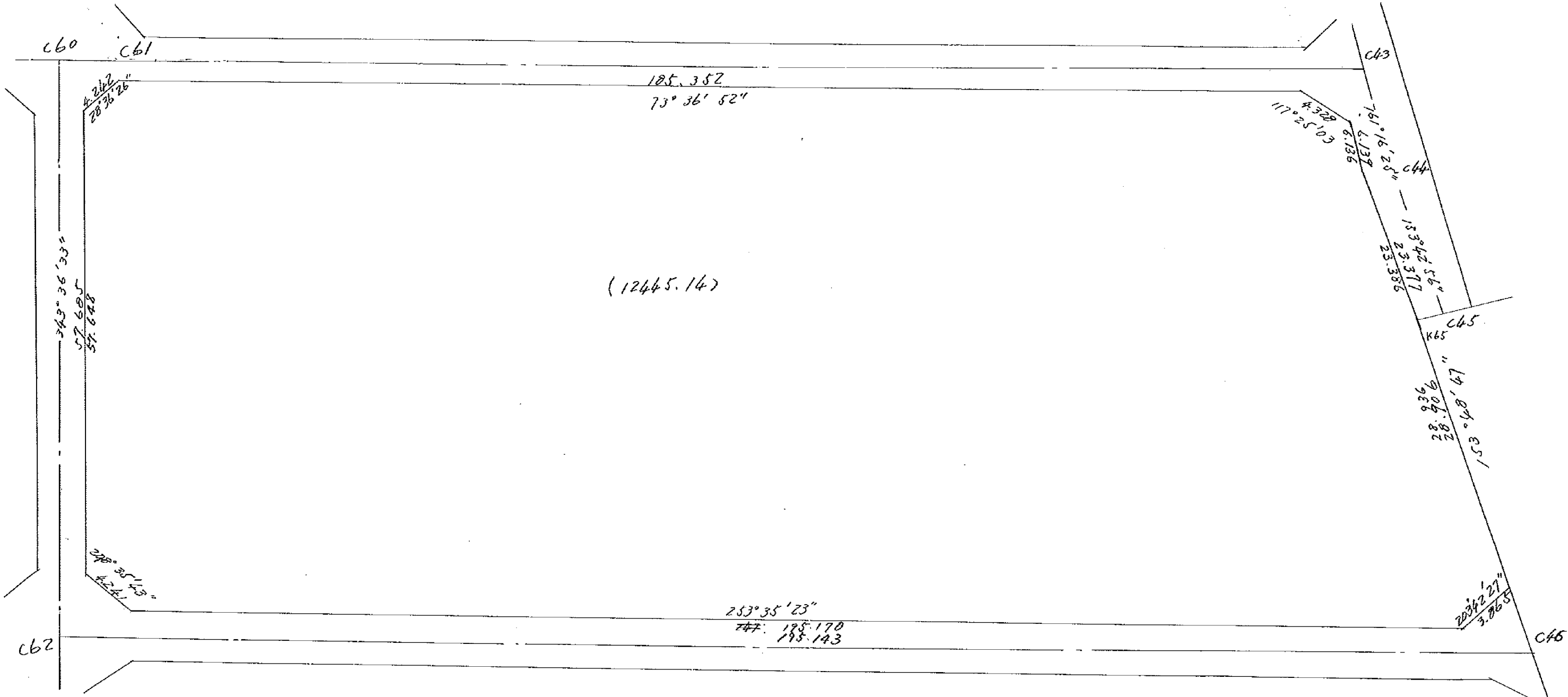
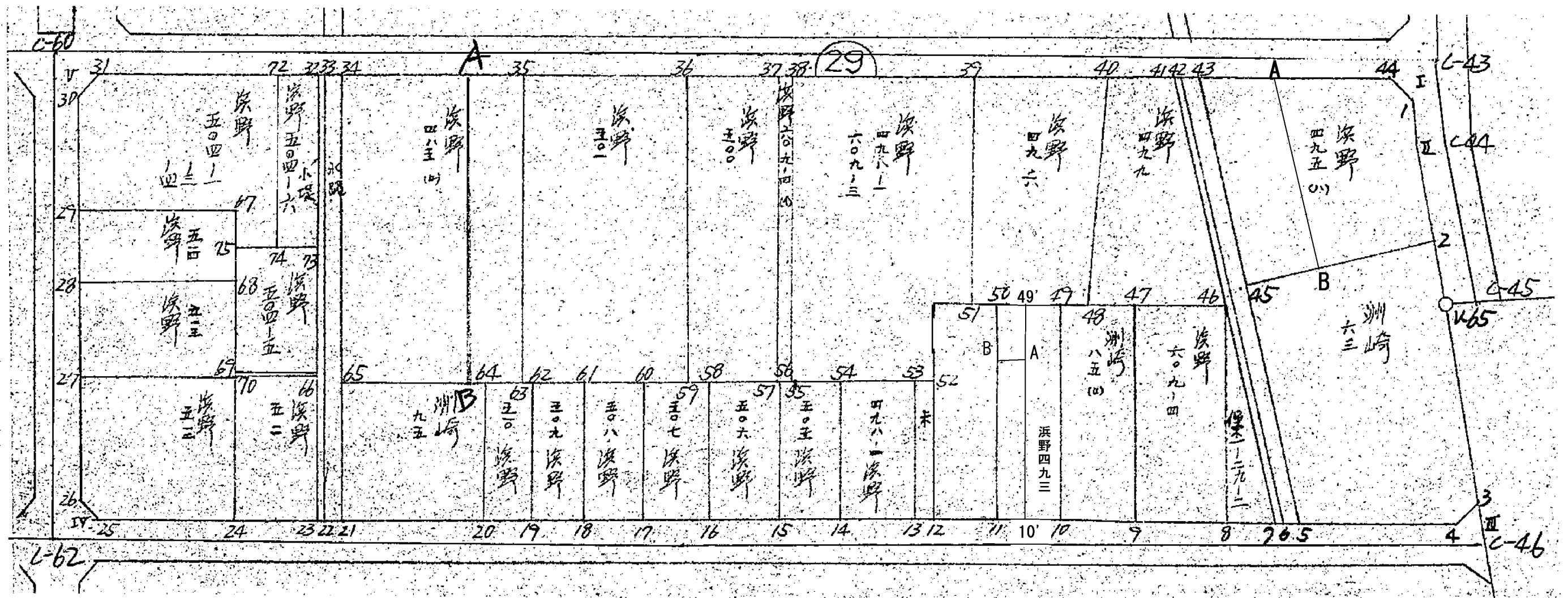


1-29





面 積 計 算 書

区

1

ブロック

29

計測者



採集者



備考

点	①	②	③	④	⑤	⑥	③ × ⑤	② × ⑥
	X	X-(定数)	$X_{n-r}-X_{n+1}$	Y	Y-(定数)	$Y_{n-r}-Y_{n+1}$	+	-
I	-152 732.087	-152 700.000 32.087	- 45.327	-35 218.145	-35 100.000 118.145	186.514 183.580	5255.158415	5984.674718
II	- 740.742	- 40.742	+ 29.615	215.211	115.211	13.286	5411.973745	541.298212
K65	- 761.702	- 61.702	+ 49.591	204.859	104.859	24 705.432	5200.062669	1507.502264
III	- 790.333	- 90.333	+ 85 82.464	190.779	90.779	+ 178.895	7758.336456	16160.122035
IV	- 847.166	- 147.166	- 4.264	383.754	283.754	+ 210.946	1209.927056	31044.079026
V	- 786.069	- 86.069	- 115.079	401.725	301.725	* 165.609	34722.211275	14253.801021
							41287.296746	163703.22819
							24916.923856	22287.217215
								47204.201071
								24916.923856
								24916.923856
								$\times \frac{1}{2} = 12458.461928$

面積計算書

工
区

1.

ブ
ロ
ック

29

計
算
者



精
算
者



備
考

点	①	②	③	④	⑤	⑥	③ ×	⑤	② ×	⑥
	X	X-(定数)	$X_{n-1}-X_{n+1}$	Y	Y-(定数)	$Y_{n-1}-Y_{n+1}$	+	-	+	-
茨野 475 (1)		-152730.000			-35200.000					
43	-152740799	-10.799	-34.383	-35247766	-47.766	-11.784	1642.338378		127.255416	
44	732935	2.935	-5.871	221023	21.023	-30.585	123.426033		89.766925	
I	734928	4.928	+7.007	217181	17.181	-5.812		134.132067	28.641526	
II	740742	10.742	+18.846	215211	15.211	-8.407		286.666506	90.307774	
Z	753774	23.774	+26.576	208774	8.774	+17.576		233.177824		418.327304
45	767318	37.318	-12.975	232907	32.807	+38.992	425.670825			1455.103456
							2191.435236	653.976397	335.9771821	1873.430760
							1537.458837			1537.458837
							<u>1/2 = 768.7294185</u>			

	(1)	(2)	(3)	(4)	(1) x (4)	(2) x (3)
	X	$X_{n-1} - X_{n+1}$	Y	$Y_{n-1} - Y_{n+1}$		
43	-152 _x 740.799		-35 _x 247.766	3-110		
A	737.301	-21.217	235.870	+24.368	+17966.550768	-5004.45379
B	762.016	-30.017	223.398	+3.063	+2334.055008	-6705.737766
45	740.799 767.318	+21.217	232.807	-24.368	-18693.025024	+4939.466119
43	740.799	+30.017	247.766	-3.063	-2269.067337	+7437.192022
A	737.301		235.870			

$$-666.466585 + 666.466585$$

$$666.466585 \times \frac{1}{2} = 333.2332925$$

A	-152 _x 737.301	-35 _x 235.870				
44	732.935 + 2.373		221.023 + 13.689		+13697.322215	+524.487579
I	734.928 - 7.807		217.131 + 5.812		+4271.401536	-1695.532067
II	740.742 - 13.846		215.211 + 3.407		+6227.417994	-4055.366506
2	753.774 - 21.274		208.774 - 3.187		-6171.147738	-4441.458076
B	762.016 + 16.473		223.398 - 27.096		-20647.585536	+2680.032254
A	737.301 + 29.081		235.870 + 2.375		+1751.089375	+6859.335470
44	732.935		221.023			

$$-871.001654 + 871.001654$$

$$871.001654 \times \frac{1}{2} = 435.500827 \quad 3-137$$

面積計算書

工
区

1

ブ
ロ
ック

29

計
算
者



精
算
者



備
考

点	①	②	③	④	⑤	⑥	③ × ⑤		② × ⑥	
	X	X-(定数)	$X_{n-1}-X_{n+1}$	Y	Y-(定数)	$Y_{n-1}-Y_{n+1}$	+	-	+	-
洲崎	63									
		-152750.000			-35190.000					
45	-152767318	-17.318	-43.875	-35232807	-42.807	-6.713	1079.013265	-		119.719334
2	753774	3.774	-5.616	208774	18.774	-27.948	105.434784			105.475752
K65	761702	11.702	+33.867	204859	14.857	-16.671		503.227753		175.084042
3	787641	37.641	+27.478	192103	2.103	-11.202		61.992234		421.654482
4	791180	41.180	+10.028	193657	3.657	+23.584		36.672376		971.189120
5	797669	47.669	-23.862	215687	25.687	+39.150	612.943194			1866.241350
							2597.391243	601.894383	841.933610	2837.430470
							1995.496860			1995.496860
							$\frac{1}{2} = 997.748430$			
水路		-152740.000			-35210.000					
42	-152741523	-1.523	-57.595	-35250228	40.228	+27.618	2316.931660			45.108214
43	740799	0.799	+56.146	247766	37.766	-34.541		2120.409836		27.598259
5	797669	57.669	+57.595	215687	5.687	-29.618		327.542765		1708.040442
6	798394	58.394	-56.146	218148	8.148	+34.541	457.477608			2016.987154
							2774.409268	2447.952601	1735.638701	2062.095368
							326.456667			326.456667
							$\frac{1}{2} = 163.2283335$			

面積計算書

工
区

1

ブ
ロ
ック

29

計
算
者



精
算
者



備
考

点	①	②	③	④	⑤	⑥	③ × ⑤	② × ⑥
	X	X-(定数)	$X_{n-1}-X_{n+1}$	Y	Y-(定数)	$Y_{n-1}-Y_{n+1}$	+ -	+ -
沃野 607-4 ⁽⁴⁾								
37	-152 757 985	(-152 755) -2.785	-42.444	-35 306 213	(-35 290) -16.213	+10.345	688.144572	30.879 825
38	757 429	2.429	+41.332	304 322	14.322	-14.126	591.956904	34.312054
55	799 317	44.317	+42.444	292 087	2.087	-10.345	88.380628	458.459365
57	799 873	44.873	-41.332	293 977	3.977	+14.126	164.399364	633.875998
							852.521936	680.539532
							171.984404	492.771419
								664.755823
								171.984404
							$\frac{1}{2} = 85.992202$	
沃野 496								
39	-152 950 140	(-152 740) -10.140	-36.256	-352 79 535	(-35 250) -29.535	-8.946	1090.820760	90.712440
40	744 834	4.834	+26.120	261 489	11.489	-25.423	300.092680	122.894782
48	776 260	36.260	+36.256	254 112	4.112	+8.946	149.084672	324.381960
51	781 090	41.090	-26.120	270 435	20.435	+25.423	533.762200	1044.631070
							1604.383160	449.199352
								213.607222
							1155.405808	1369.013030
								1155.405808
							$\frac{1}{2} = 577.702904$	

面積計算書

工
区

ブ
ロ
ック

29

計
算
者



精
算
者



備
考

点	① X	② X-(定数)	③ $X_{n-1}-X_{n+1}$	④ Y	⑤ Y-(定数)	⑥ $Y_{n-1}-Y_{n+1}$	③ ×	⑤	② ×	⑥
							+	-	+	-
茨野	479	(-152740)			(-35230)					
40	-152744.834	-4.834	-34.448	-35261.429	-31.489	-2.902	1084.733072		14.028268	-
41	741.812	1.812	+25.763	251.212	21.212	-26.514		546.484756	48.043368	-
46	770.597	30.597	+34.448	234.975	4.975	+2.902		171.378800		88.792494
48	776.260	36.260	-25.763	254.112	24.114	+26.514	621.248982			961.397640
							1705.982054	717.863556	62.071636	1050.590134
							988.118498			988.118498
							$\frac{1}{2} = 494.059249$			
水路		(-152770)			(-35340)					
33	-152776.071	-6.071	-61.789	-35367.723	-27.723	+15.562	1712.976447			94.476702
34	775.366	5.366	+60.378	365.325	25.325	-20.358		1527.072850	109.241028	-
21	836.449	66.449	+61.789	347.365	7.365	-15.562		455.075985	1034.079338	-
22	837.155	67.155	-60.378	347.763	9.763	+20.358	589.470414			1367.141490
							2302.446861	1784.148835	1143.320366	1461.618392
							318.298026			318.298026
							$\frac{1}{2} = 159.149013$			

面積計算書

工区

ブロック

29

計算者



精算者



備考

点	①	②	③	④	⑤	⑥	③ ×	⑤	② ×	④
	X	X-(定数)	$X_{n-1} - X_{n+1}$	Y	Y-(定数)	$Y_{n-1} - Y_{n+1}$	+	-	+	-
浜野 609-4 ^(II)		-152770.000			-35220.000					
47	-152774287	4.287	-33.829	-35247444	27.444	-3.657	928.403076		15.677559	
46	770597	0.597	+26.470	234975	14.975	-21.271		396.388250	12.698787	
8	800757	30.757	+33.829	226193	6.193	+3.657		208.826417		112.478349
9	804426	34.426	-26.470	238632	18.632	+21.271	493.189040			732.275446
							1421.592116	605214.667	28.376346	844.753795
							816.377449			816.377449
							$\frac{1}{2}=408.1887245$			
									合筆あり	
洲崎 85 ^(II)		-152770.000			-35230.000					
49	-152777244	7.244	-33.087	-35257438	27.438	-1.199	907.841106		2.685556	
47	774287	4.287	+27.182	247444	17.444	-18.806		474.162808	80.621322	
9	804426	34.426	+33.087	238632	8.632	+1.199		285.606984		41.276774
10	807374	37.374	-27.182	248643	18.643	+18.806	506.754026			702.855444
							1414.595132	759.769792	89.306878	744.132218
							654.825340			654.825340
							$\frac{1}{2}=327.412670$			

面積計算書

工
区

ブ
ロ
ック

計
算
者



精
算
者



備
考

1

27

点	①	②	③	④	⑤	⑥	③ ×	⑤	② ×	④
	X	X-(定数)	$X_{n-1}-X_{n+1}$	Y	Y-(定数)	$Y_{n-1}-Y_{n+1}$	+	-	+	-
浜野 473		-152770.000			-35240.000					
50	-152779745	9.745	-32.624	-35265891	25.891	+0.327	844.667984			3.186615
49	779244	7.244	+27.629	257438	17.438	-17.248		481.794502	124.944512	
10	807374	37.374	+32.624	248643	8.643	-0.327		281.969232	12.221298	
11	809868	39.868	-27.629	257111	17.111	+17.248	472.759819			687.643264
							1317.427803	763763734	137.165810	690.829879
							553.664069			553.664069
							<u>1/2=276.8320345</u>			
							分筆あり			

座標法面積計算 (4P7-3)

測点	X	Δx	Y	Δy	(+) F_1	(-) F_2
					$\Delta x \cdot \Delta y$	$\Delta x \cdot \Delta y$
			(-250)			
B	-788.66P		-263.290			
		+ -1.246		-22.34P	27846854	
A	-787.423		-259.05P			
		- -21.196		-11.931		252.88P476
10	-808.61P		-252.872			
		- -1.24P		-9.983		12.46876
11	-80P.868		-257.111			
		+ -21.199		-20.401	432.4807PP	
D	-788.66P		-263.290			
	-	-	-	-		
	-	-	-	-		
	-	-	-	-		
	-	-	-	-		
	-	-	-	-		
	-	-	-	-		
	-	-	-	-		
	-	-	-	-		
	-	-	-	-		
			$\bar{z} =$		460.327653	265.358243
			$F = (F_1) \sim (F_2) =$			184.86P410
計算者			$F / 2 =$			97.48P705
点検者			$\times 0.3025 =$			

面積計算書

Ⅱ
区

1

ブロック

29

計算者



積算者



備考

点	①	②	③	④	⑤	⑥	③ ×	⑤	② ×	④
	X	X-(定数)	$X_{n-1} - X_{n+1}$	Y	Y-(定数)	$Y_{n-1} - Y_{n+1}$	+	-	+	-
478-1 609-3		-152750.000			-35250.000					
38	152757429	7.429	-47.177	35304322	54.322	-12.552	2671.372994		73.248800	
39	750140	0.140	+23.661	279535	29.535	-33.887		678.827635	4.744180	
51	781090	31.090	+29.605	270435	20.435	-13.644		604.778175	424.171760	
51	777745	29.745	+28.778	265891	15.891	-13.324		457.311198	376.322380	
11	809868	59.868	+32.876	257111	7.111	+0.568		233.781236		34.005024
12	812621	62.621	-16.437	266459	16.459	+15.000	270.536583			737315000
52	793431	43.431	-13.304	272111	22.111	+25.628	274.164744			1113.047668
55	799317	49.317	-36.002	272087	42.087	+32.211	1515.216174			1588.547887
							4751.310495	1774.878244	918.507328	3624.919577
							2756.412251			2756.412251
							$\frac{1}{2} = 1378.2061255$			

面積計算書

工
区

/

ブロック

29

計算者



精算者



備考

点	① X	② X-(定数)	③ $X_{n-1}-X_{n+1}$	④ Y	⑤ Y-(定数)	⑥ $Y_{n-1}-Y_{n+1}$	③ × ⑤ +	⑤ -	② × ⑥ +	③ × ⑥ -
保 1-29-1		-152790.000			-35260.000					
53	-152794.235	4.235	-19.994	-35274.840	14.840	+2.923	296.710760			12.378905
52	793431	3.431	+18.386	272.111	12.111	-8.381	222.672846			28.755211
12	812621	22.621	+19.994	266459	6.459	-2.923	129.141246			66.121183
13	813425	23.425	-18.386	267188	9.188	+8.381	168.830568			196.324925
							465.641528			351.814092
							94.876394			208.703830
							113.827436			113.827436
							$\frac{1}{2}=56.913718$			
茨野 498-2		-152790.000			-35260.000					
54	-152797171	-7.171	-22.125	-35284806	24.806	-4.314	548.832750			30.933694
53	794235	4.235	+16.254	274840	14.840	-15.618	241.207360			66.142230
13	813425	23.425	+22.125	267188	9.188	+4.314	203.284300			101.055450
14	816360	26.360	-16.254	279154	17.154	+15.618	311.329116			411.690480
							860.161866			444.493860
							97.077924			512.745930
							415.668006			415.668006
							$\frac{1}{2}=207.834003$			

面積計算書

工
区

1

ブ
ロ
ック

29

計
算
者



精
算
者



点	①	②	③	④	⑤	⑥	③ × ⑤		② × ④	
	X	X-(定数)	$X_{n-1} - X_{n+1}$	Y	Y-(定数)	$Y_{n-1} - Y_{n+1}$	+	-	+	-
茨野 505		-152790.000			-35270.000					
56	-152799.666	-9.666	-21.683	-35293.274	-23.274	-2.817	504.650142		27.229122	
54	797.171	7.171	+16.694	284.806	14.806	-14.120		247.171364	101.254520	
14	816.360	26.360	+21.683	279.154	9.154	+2.817		198.486182		74.256120
15	818.854	28.854	-16.694	287.623	17.623	+14.120	294.198362			407.418480
							778.848504	445.657546	128.483642	481.674600
							253.190958			353.190958
							$\frac{1}{2} = 176.595479$			
茨野 506		-152790.000			-35280.000					
58	-152802.445	-12.445	-21.966	-35302.705	-22.705	-3.781	498.738030		47.054545	
56	799.666	9.666	+16.409	293.274	13.274	-15.082		217.813066	145.782612	
15	818.854	28.854	+21.966	287.623	9.623	+3.781		167.446818		109.096974
16	821.632	31.632	-16.409	297.055	17.055	+15.082	277.855475			477.073824
							778.593525	385.259884	192.837157	586.170798
							393.333641			393.333641
							$\frac{1}{2} = 196.6668205$			

分筆後の座標なし

面積計算書

工
区

ブロック

29

計算者



計算者

備考

点	①	②	③	④	⑤	⑥	③ ×	⑤	② ×	⑥
	X	X-(定数)	$X_{n-1} - X_{n+1}$	Y	Y-(定数)	$Y_{n-1} - Y_{n+1}$	+	-	+	-
茨野 507		(-152800)			(-35290)					
60	-152805071	-5.071	-21.812	-35311616	-21.616	-3.262	471.489192		16.541602	
58	802445	2.445	+16.561	302705	-12.705	-14.561		210.407505	35.601645	
16	821632	21.632	+21.812	299055	-7.055	+3.262	153.883660		70.563584	
17	824257	24.257	-16.561	305967	-15.967	+14.561	264.429487		353.206177	
							735.912679	364.291165	52.143247	423.769761
							371.626514			371.626514
							$\frac{1}{2} = 175.913257$			
茨野 508		(-152800)			(-35300)					
61	-152807456	-7.456	-21.570	-35319710	-19.710	-2.445	425.144700		18.229920	
60	805071	5.071	+16.801	311616	-11.616	-13.743	195.160416		69.690753	
17	824257	24.257	+21.570	305967	5.967	+2.445	128.708190		57.308365	
18	826641	26.641	-16.801	314061	14.061	+13.743	236.238861		366.127263	
							661.383561	323.868606	87.920673	425.435628
							337.514755			337.514755
							$\frac{1}{2} = 168.757475$			

面積計算書

工
区

ブ
ロ
ック

29

計
算
者



精
算
者



備
考

点	① X	② X-(定数)	③ $X_{n-1}-X_{n+1}$	④ Y	⑤ Y-(定数)	⑥ $Y_{n-1}-Y_{n+1}$	③ ×	⑤	② ×	⑥
							+	-	+	-
沃野 509		(-152800)			(-35310)					
62	-152809496	-9.496	-21.224	-35326635	-16.635	-1.275	353.061240		12.107400	
61	807456	7.456	+17.145	319710	9.710	-12.574		166.477950	93.751744	
18	826641	26.641	+21.224	314061	4.061	+1.275		86.190664		33.967275
19	828680	28.680	-17.145	320985	10.985	+12.574	188.337825			360.622320
							541.399065	-252.668614	105.859144	394.589595
							288.730451			288.730451
							$\frac{1}{2}=144.3652255$			
沃野 510		(-152800)			(-35320)					
64	-152811441	-11.441	-21.127	-35333234	-13.234	-0.949	279.594718		10.857509	
62	809496	9.496	+17.239	326635	6.635	-12.249		114.380765	116.316504	
19	828680	28.680	+21.127	320985	0.985	+0.949		20.810095		27.217320
20	830623	30.623	-17.239	327584	7.584	+12.249	130.740576			375.101127
							410.335294	-135.190860	127.174013	402.318447
							275.144434			275.144434
							$\frac{1}{2}=137.572217$			

面積計算書

工
区

1

ブ
ロ
ック

29

計
算
者



精
算
者



点	① X	② X-(定数)	③ $X_{n-1}-X_{n+1}$	④ Y	⑤ Y-(定数)	⑥ $Y_{n-1}-Y_{n+1}$	③ × ⑤ +	⑤ -	② × ⑥ +	⑥ -
洲崎 75		(-152.810)			(-35.320)					
65	-152.817266	-7.266	-25.008	-35.353205	-33.005	-14.131	825.389040		102.675846	
64	211.441	1.441	+13.357	333.234	-13.234	-25.421		176.766538	36.631661	
20	830.623	20.623	+25.008	327.584	-7.584	+14.131		189.660672		291.423613
21	836.449	26.449	-13.357	347.365	-27.365	+25.421	365.514305			672.360029
							1190.907345	366.427210	139.307507	963.783642
							824.476135			824.476135
							$\sqrt{2}=412.2380675$			
浜野 485 (II)		(-152.760)			(-35.320)					
34	-152.775366	-15.366	-49.095	-35.365325	-45.325	-12.148	2225.230895		186.666168	
35	769.171	8.171	+34.710	340.857	20.857	-36.723		723.946470	300.063633	
63	810.076	50.076	+49.095	328.602	8.602	+12.148		422.315190		608.323248
65	817.266	57.266	-34.710	353.005	33.005	+36.723	1145.603550			2102.979318
							3370.834425	1146.261660	486.729801	2711.302566
							2224.572765			2224.572765
							$\sqrt{2}=1112.2863825$			

面積計算書

工区

1

ブロック

29

計算者



精算者



備考

点	①	②	③	④	⑤	⑥	③ ×	⑤	② ×	④
	X	X-(定数)	$X_{n-1}-X_{n+1}$	Y	Y-(定数)	$Y_{n-1}-Y_{n+1}$	+	-	+	-
赤野 501		(-152760)			(-35300)					
35	-152768171	-8.171	-48.546	-35340857	-40.857	-10.332	1993.443922		84.422772	
36	761530	1.530	+35.253	318270	18.270	-34.830		644.072310	53.289900	
59	803424	43.424	+48.546	306027	6.027	+10.332		292.586742		448.656768
63	810076	50.076	-35.253	328602	28.602	+34.830	8.306306			1744.147080
							2991.750228	936.659052	137.712672	2192.803848
							2055.091176			2055.091176
							$\frac{1}{2} = 1027.545588$			
赤野 500		(-152750)			(-35290)					
36	-152761530	-11.530	-45.439	-35318270	-28.270	+0.186	1284.560530			2.144580
37	757995	-7.995	+38.343	306213	16.213	-24.293		621.655059	193.979605	
57	799873	-49.873	+45.439	293977	3.977	-0.186		180.710903	7.276378	
59	803424	53.424	-38.343	306027	16.027	+24.293	614.523261			1297.827232
							1899.083771	802.365962	203.255983	1299.973812
							1096.717829			1096.717829
							$\frac{1}{2} = 548.3589145$			

面積計算書

工区

1

ブロック

29

計算者



精算者



備考

点	① X	② X-(定数)	③ $X_{n-1}-X_{n+1}$	④ Y	⑤ Y-(定数)	⑥ $Y_{n-1}-Y_{n+1}$	③ × ⑤ +	⑤ -	② × ⑥ +	③ × ⑥ -
小堤										
32	-152776.353	⁽⁻¹⁵²⁷⁷⁰⁾ -6.353	-61.366	-35368.682	⁽⁻³⁵³⁴⁰⁾ -28.682	+17.001	1760.09612			108.007353
33	776.071	6.071	+60.802	367.723	27.723	-18.919		1685.613846	114.857249	-
22	837.155	67.155	+61.366	349.763	9.763	-17.001		599.116258	1141.702155	-
23	837.437	67.437	-60.802	350.722	10.722	+18.919	651.919044			1275.840603
							2412.018656	2284.730104	1256.559404	1383.84786
							127.288352			127.288352
							$\frac{1}{2} = 63.644276$			
次野 504-5										
75	-152804.353	⁽⁻¹⁵²⁸⁰⁰⁾ -4.353	-19.585	-35372.683	⁽⁻³⁵³⁵⁰⁾ -22.683	-6.466	444.246555		28.146498	-
73	801.030	1.030	+12.943	361.426	11.426	-16.039		147.886718	16.520170	-
66	817.296	17.296	+19.585	356.644	6.644	+6.466		130.122740		111.835936
69	820.615	20.615	-12.943	367.892	17.892	+16.039	231.596156			330.643985
							675.822711	-278.009458	44.666668	442.479721
							397.813253			397.813253
							$\frac{1}{2} = 198.7066265$			

面積計算書

工区

1

ブロック

29

計算者



精算者



備考

点	①	②	③	④	⑤	⑥	③ × ⑤	② × ④
	X	X-(定数)	$X_{n-1}-X_{n+1}$	Y	Y-(定数)	$Y_{n-1}-Y_{n+1}$	+	-
浜野 504-6								
72	-152777200	(-152770) -7200	-25.527	-35371564	(-35360) -11564	+4.375	295.194228	31.500000
32	776353	6.353	+23.830	362682	8682	-10.138	206.892060	64.406714
73	801030	31030	+25.527	361426	1426	-4.375	36.401502	135.756250
74	801880	31880	-23.830	364307	4307	+10.138	102.635810	323.199440
							377.830038	243.293562
							154.536476	200.162964
								354.679440
								154.536476
							$\frac{1}{2} = 77.268238$	
浜野 504- $\frac{1}{2}$								
31	-152785223	(-152770) -15223	-11.747	-35398847	(-35360) -38847	-29.314	456.335709	446.247022
72	777200	7200	+16.657	371564	11564	-34.540	192.621548	248.688000
74	801880	31880	+27.153	364307	4307	+1.119	116.949771	33.673720
75	804353	34353	-3.702	372683	12683	+10.195	46.952466	350.228835
67	798178	28178	+0.230	374502	14502	+23.596	3.335460	64.888088
29	804583	34583	-9.231	376279	36279	+26.376	334.891449	912.161208
30	788947	18947	-19.360	400878	40878	+2.568	791.398080	48.655896
							1629.577704	312.704779
							1316.672725	674.935022
								2011.607747
								1316.672725
							$\frac{1}{2} = 658.3363625$	

面積計算書

工
区

ノ
ロ
ク

27

計
算
者



精
算
者



備
考

点	①	②	③	④	⑤	⑥	③ × ⑤		② × ④	
	X	X-(定数)	$X_{n-1}-X_{n+1}$	Y	Y-(定数)	$Y_{n-1}-Y_{n+1}$	+	-	+	-
浜野 512										
27	-152827.313	-152820.000 -7.313	-23.387	-35389.573	-35360.000 -29.573	-16.792	672.091491			122.779896
70	820.901	0.901	+13.435	367.808	7.808	-27.632		104.900480		24.896432
24	840.748	20.748	+25.417	361.961	1.961	+13.068		49.842737		271.134864
25	846.318	26.318	+3.540	380.876	20.876	+22.639		73.901040		595.813202
26	844.288	24.288	-19.005	384.600	24.600	+8.717	467.523000			211.718476
							1159.614491	228.644257	147.676328	1078.666562
							930.970234			930.970234
							$\frac{1}{2} = 465.485117$			
浜野 511										
69	-152820.615	-152810.000 -10.615	-23.452	-35367.892	-35350.000 -17.892	-5.317	419.603184			56.439955
66	817.296	7.296	+16.822	356.644	6.644	-17.170		111.765368		125.272320
23	837.437	27.437	+23.452	350.722	0.722	+5.317		16.932344		145.882529
24	840.748	30.748	-16.822	361.961	11.961	+17.170	201.207942			527.943160
							620.311126	128.677712	181.712275	673.825689
							492.113414			492.113414
							$\frac{1}{2} = 246.056707$			

面積計算書

工
区

1.

ブ
ロ
ック

29

計
算
者



精
算
者



備
考

点	①	②	③	④	⑤	⑥	③ × ⑤	② × ⑥
	X	X-(定数)	$X_{n-1}-X_{n+1}$	Y	Y-(定数)	$Y_{n-1}-Y_{n+1}$	+ -	+ -
浜野 514								
29	-152804.583	⁽⁻¹⁵²⁷⁷⁰⁾ -14.583	-16.254	-35396.279	⁽⁻³⁵³⁷⁰⁾ -26.279	-18.880	427.138866	275.327040
67	798.178	8.178	+3.440	374.502	4.502	-24.678	15.486880	201.816684
68	808.023	18.023	+16.254	371.601	1.601	+18.880	26.022654	340.274240
28	814.432	24.432	-3.440	393.382	23.382	+24.678	80.434080	602.932896
							507.572946	41.509534
							466.063412	477.143724
								943.207136
								466.063412
							$\frac{1}{2}=233.031706$	
浜野 513								
28	-152814.432	⁽⁻¹⁵²⁸⁰⁰⁾ -14.432	-19.290	-35393.382	⁽⁻³⁵³⁶⁰⁾ -33.382	-17.992	643.938780	259.660544
68	808.023	8.023	+6.469	371.601	11.601	-25.574	75.046869	205.180202
70	820.901	20.901	+19.290	367.808	7.808	+17.992	150.616320	376.050992
27	827.313	27.313	-6.469	389.593	29.593	+25.574	191.437117	698.502662
							835.375897	225.663189
							609.712708	464.840746
								1074.553454
								609.712708
							$\frac{1}{2}=304.856354$	

面積計算書

工
区

ブ
ロ
ック

29

計
算
者



精
算
者



備
考

点	①	②	③	④	⑤	⑥	③ × ⑤		② × ④	
	X	X-(定数)	$X_{n-1}-X_{n+1}$	Y	Y-(定数)	$Y_{n-1}-Y_{n+1}$	+	-	+	-
角切										
I	-152732087	(-152750.000) -2.087	+1.993	-35218145	(-35210.000) -8.145	-3.842		16.232985		8.018254
1	734928	4.928	+0.848	217181	7.181	+2.878		6.089488		14.182784
44	732935	2.935	-2.841	221023	11.023	+0.964	31.316343			2.829340
							31.316343	22.322473	8.018254	17.012124
							8.993870			8.993870
							$\frac{1}{2}=4.496935$			
角切										
III	-152790333	(-152780.000) -10.333	+3.539	-35190779	(-35190.000) -0.779	+1.554		2.756881		16.057482
4	791180	11.180	-2.692	193657	3.657	+1.824	9.844644			14.802320
3	787641	7.641	-0.847	192103	2.103	-2.878	1.781241		21.990798	
							11.625885	2.756881	21.990798	30.859802
							8.869004			8.869004
							$\frac{1}{2}=4.434502$			

面積計算書

工
区

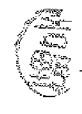
ブ
ロ
ック

29

計
算
者



精
算
者



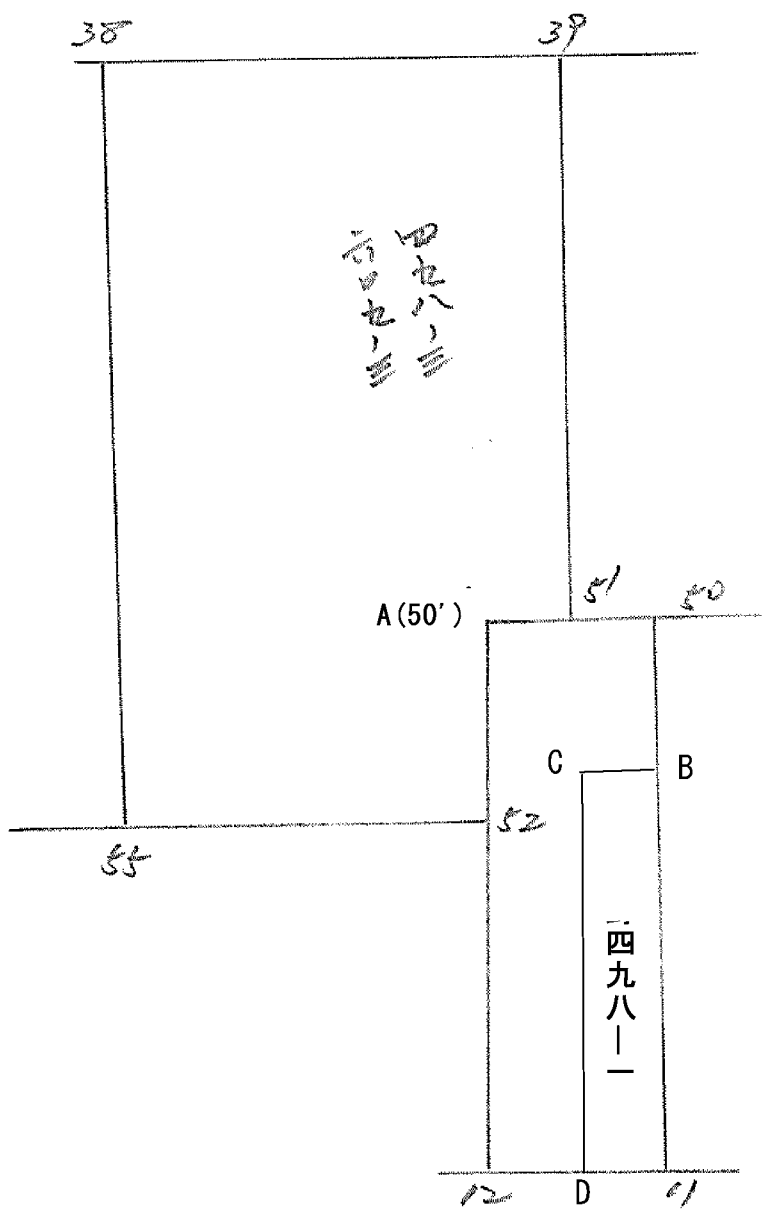
備
考

点	①	②	③	④	⑤	⑥	③ ×	⑤	② ×	④
	X	X-(定数)	$X_{n-1}-X_{n+1}$	Y	Y-(定数)	$Y_{n-1}-Y_{n+1}$	+	-	+	-
角切		(-152840.000)			(-35380.000)					
IV	-152847166	- 7.166	- 2.030	-35383734	3.754	+ 3.724	7.620620			26.686184
26	844288	4.288	- 0.848	384600	4.500	- 2.878	3.900800		12.340264	
25	846318	6.318	+ 2.878	380876	0.876	- 0.846		2.521128	5.345028	
							11.521420	2.521128	17.625292	26.686184
							9.000292			9.000292
							$\frac{1}{2}=4.500146$			
角切		(-152700.000)			(-35390.000)					
V	-152786069	- 6.069	- 3.724	-35401725	11.725	- 2.031	43.663900		12.326139	
31	785223	5.223	+ 2.878	398847	8.847	- 0.847		25.461666	4.423881	
30	788947	8.947	+ 0.846	400878	10.878	+ 2.878		9.202788		25.749466
							43.663900	34.664454	16.750020	25.749466
							8.999446			8.999446
							$\frac{1}{2}=4.499723$			

計年 月 算日	計 算 者	檢 查 者
---------------	-------------	-------------

B. No. 29 各筆面積計算書

地 番	算 式	隅 切	地 積	摘 要
495(口)			768.72 ✓	
63			997.74 ✓	
水路			168.22 ✓	
小堤			65.24 ✓	
499			494.05 ✓	
496			577.70 ✓	
1-29-2 系			115.30 ✓	
609-4(口)			408.18 ✓	
85(口)			327.41 ✓	
493			276.83 ✓	
498-1			1378.20 ✓	
609-3				
609-4(口)			85.99 ✓	
500			548.35 ✓	
501			1027.54 ✓	
485(口)			1112.28 ✓	
保1-29-1 系			56.91 ✓	
498-2			207.83 ✓	
505			176.59 ✓	
506			196.66 ✓	
507			185.81 ✓	
508			168.75 ✓	
509			144.36 ✓	
510			137.57 ✓	
95			412.23 ✓	
水路			159.14 ✓	



面積計算書

工区

ブロック

計算者

精算者

備考

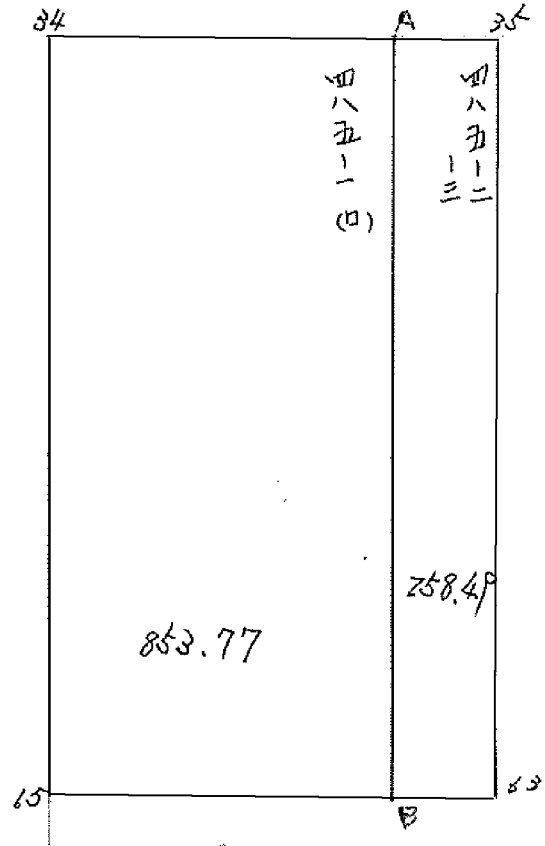
498-3
609-3

498-1

点	①	②	③	④	⑤	⑥	③ × ⑤		② × ⑥	
	X	X - (定数)	X _{n-1} - X _n	Y	Y - (定数)	Y _{n-1} - Y _n	+	-	+	-
38	⁻¹⁵² 757.42P	⁻¹⁵² 750.000	-4P.177	⁻³⁵ 304.322	⁻³⁵ 250.000	-12.552	2671.3P2PP6		93.248808	
3P	750.140		+23.661	279.535		-33.887		6P8.827635	4.744180	
51	781.0P0		+32.3P5	270.435		-4.215		661.9P1825	131.044350	
A	782.535		+12.341	275.320		+1.676		312.474120		54.528660
52	793.431		+16.782	272.111		+16.767		371.066802		728.207577
55	799.317		-36.002	292.087		+32.211	1515.216174			1588.54P887
							4186.60P168	2064.360382	22P.037338	2371.286124
							2142	248786	2142	248786
							分筆後の座標なし		Σ = 1071.1243P3	
50	⁻¹⁵² 779.745	⁻¹⁵² 750.000	+27.333	⁻³⁵ 265.8P1	⁻³⁵ 250.000	-18.20P				
11	80P.868		+32.876	257.111		+0.568				34.005024
12	812.621		-27.333	266.45P		+18.20P	64P.873867			1140.26578P
A	782.535		-32.876	275.320		-0.568	832.420320			18.47P880
							1282.2P4167	668.12P93P	560.106585	1174.270813
							614	164228	614	164228
									Σ = 207082114	

座標法面積計算 (4P8-1)

測点	X	Δx	Y	Δy	(+) F ₁	(-) F ₂
					$\Delta x \cdot \Delta y$	$\Delta x \cdot \Delta y$
			(-250)			
C	-790.310		-268.860			
		⁻ 1.641		- 32.15	52.758150	
B	-788.669		-263.290			
		⁻ 21.199		- 20.701		432.480999
II	-809.868		-257.111			
		⁻ 1.623		- 19.732		32.025036
D	-811.491		-262.621			
		⁺ 21.181		- 31.481	666.799061	
C	-790.310		-268.860			
	-					
	-					
	-					
	-					
	-					
	-					
	-					
	-					
	-					
	-					
	-					
	-					
	-					
	-					
	-					
	-					
	-					
			$\bar{z} =$	719.557211	464.505835	
			F = (F ₁) ~ (F ₂) =		255.051376	
計算者			F / 2 =		127.525688	
点検者			× 0.3025 =			



面積計算書

工区

1

ブロック

29

計算者

精算者

備考

落 485-100

点	①	②	③	④	⑤	⑥	③ × ⑤		② × ⑥	
	X	X - (定数)	X _{n-1} - X _n	Y	Y - (定数)	Y _{n-1} - Y _n	+	-	+	-
34	1775.366	15.366	+ 47.424	365.325	36.325	+ 6.468	1675.252900		99.387288	
A	769.842	9.842	- 36.383	346.537	16.537	+ 31.044		601.66671	305.535048	
B	811.749	51.749	- 47.424	334.281	4.281	- 6.468		203.022144		374.712532
65	817.266	57.266	+ 36.383	353.005	23.005	- 31.044	836.990915			1777.765704
							2512.243715	804.687815	404.922336	2112.478236
							1707.555900			1707.555900
							× 1/2 = 853.777950			
							分筆後の座標なし			

面積計算書

工
区

1

ブ
ロ
ック

29

計
算
者

精
算
者

備
考

沢 485-2
-3

点	①	②	③	④	⑤	⑥	③ × ⑤		② × ⑥	
	X	X - (定数)	X _{n-1} - X _n	Y	Y - (定数)	Y _{n-1} - Y _n	+	-	+	-
A	-152 769.842	(-152760) 9.842	+ 43.578	-35 346.537	(-35720) 26.537	- 6.576	1156.429786			64.720992
35	768.171	8.171	- 40.234	340.857	20.857	+ 17.975		839.160538	146.546885	
63	810.076	50.076	- 43.578	328.602	8.602	+ 6.576		374.857956	329.299776	
B	811.749	51.749	+ 40.234	334.281	14.281	- 17.975	574.531754			928.118315
							1731.011140	1214.018494	425.846661	992.839309
							516.992646			516.992646
							× 1/2 = 258.496323			